



TEREX

RT700 TIER 3 EXPORT & RT700-1 TIER 4i



RT700 & RT700-1 PARTS MANUAL

Revised: April 2012

12261-264

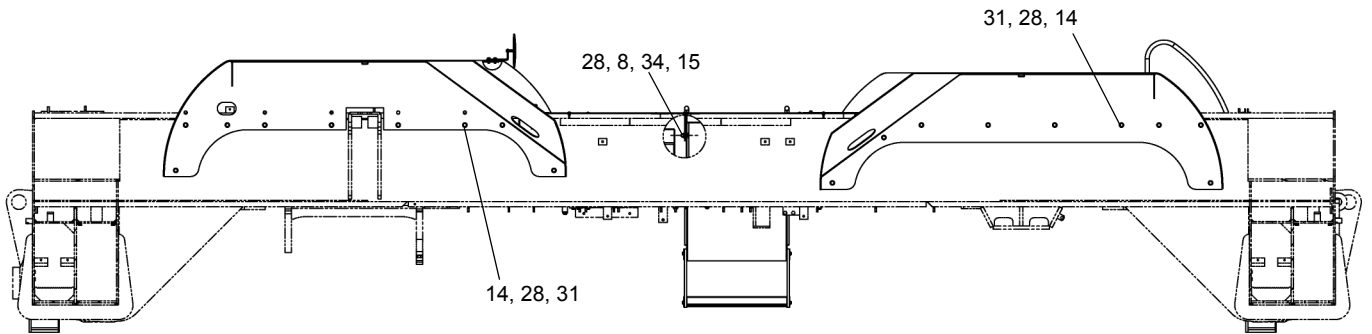
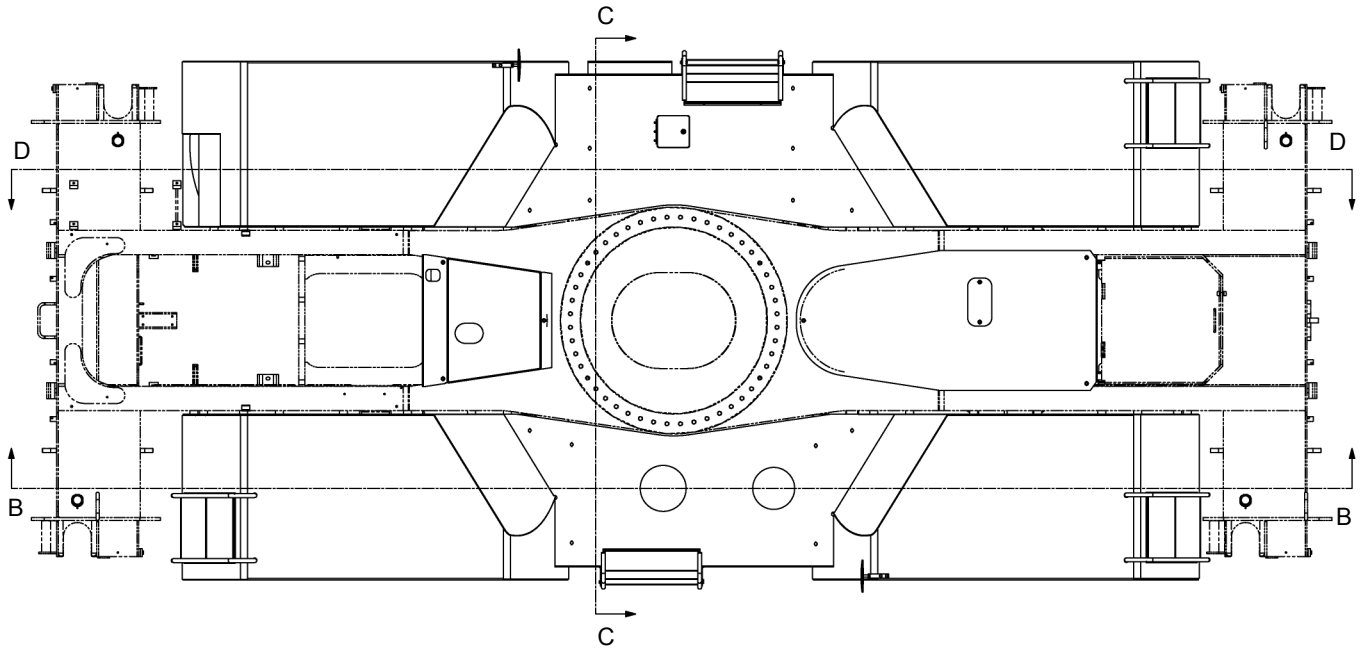
CLICK HERE TO **DOWNLOAD** THE COMPLETE MANUAL

- Thank you very much for reading the preview of the manual.
- You can download the complete manual from: www.heydownloads.com by clicking the link below

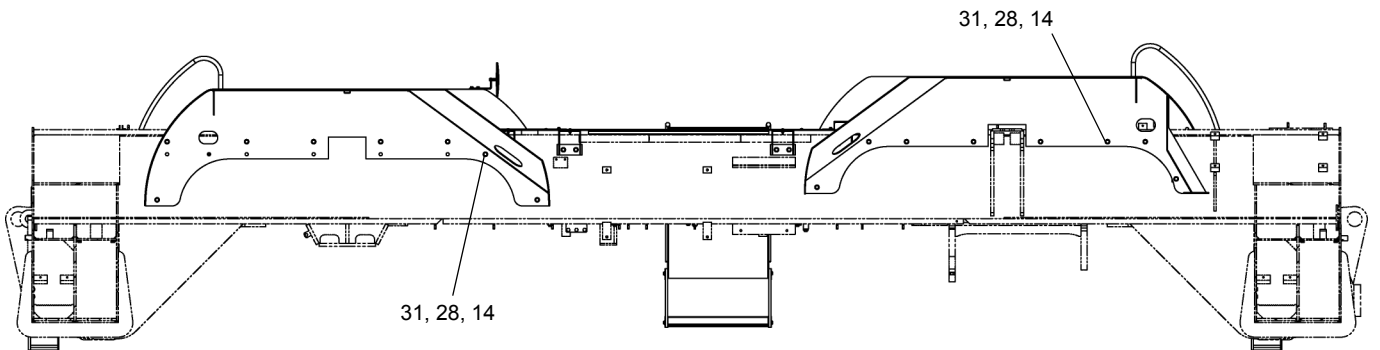


- Please note: If there is no response to CLICKING the link, please download this PDF first and then click on it.

CLICK HERE TO **DOWNLOAD** THE COMPLETE MANUAL



SECTION B - B



SECTION D - D

SEE PAGE 2.4

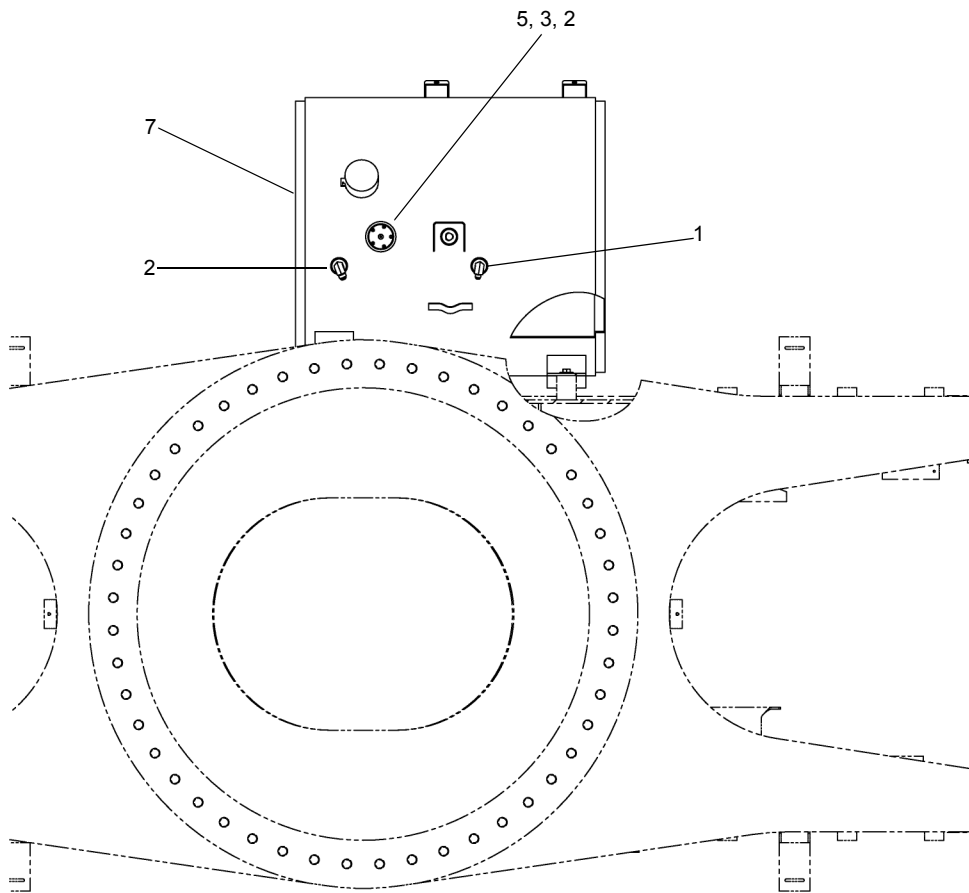
WHEN ORDERING PARTS, SPECIFY MODEL NUMBER, SERIAL NUMBER AND DESCRIPTION OF PARTS REQUIRED



FENDER & DECK ASSEMBLY

DATE: Revised 08-2011
 MODEL: RT700-1
 PAGE 2.3

GROUP
2



<u>REF</u>	<u>PART NO.</u>	<u>DESCRIPTION</u>	<u>QTY</u>
	T107807 (Rev A)	<i>Fuel Tank Assembly</i>	
1	1219-775	Adapter, 90DEG Male 3/8JIC-1/2NPT	1
2	1219-815	Adapter, Male Pipe Elbow- JIC 1/2	1
3	1239-44	Gasket	1
4*	1245-42	Sender	1
5	S-14-190F500-H2	SCR, SHCS 10-32 X 0.50, ST Z	5
6*	SHF-500CA00-25	SCR, HHCS FT 0.50-13 X 1.00, ST Z G5	4
7	T107806	Tank, Fuel.....	1
8*	WAW-50WX000-20	WSH, FL TYPA-WID 0.50, ST Z	4

*ITEMS 4, 6 & 8 ARE NOT SHOWN IN THE ILLUSTRATION

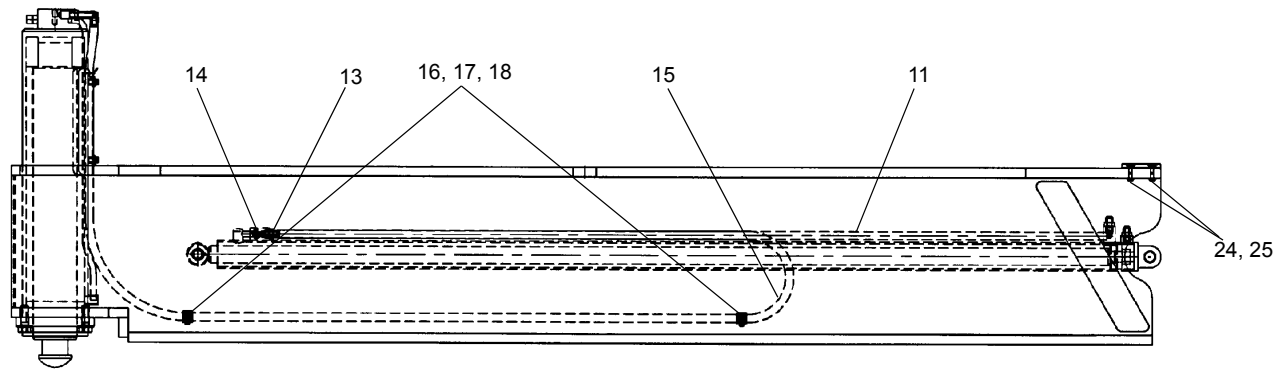
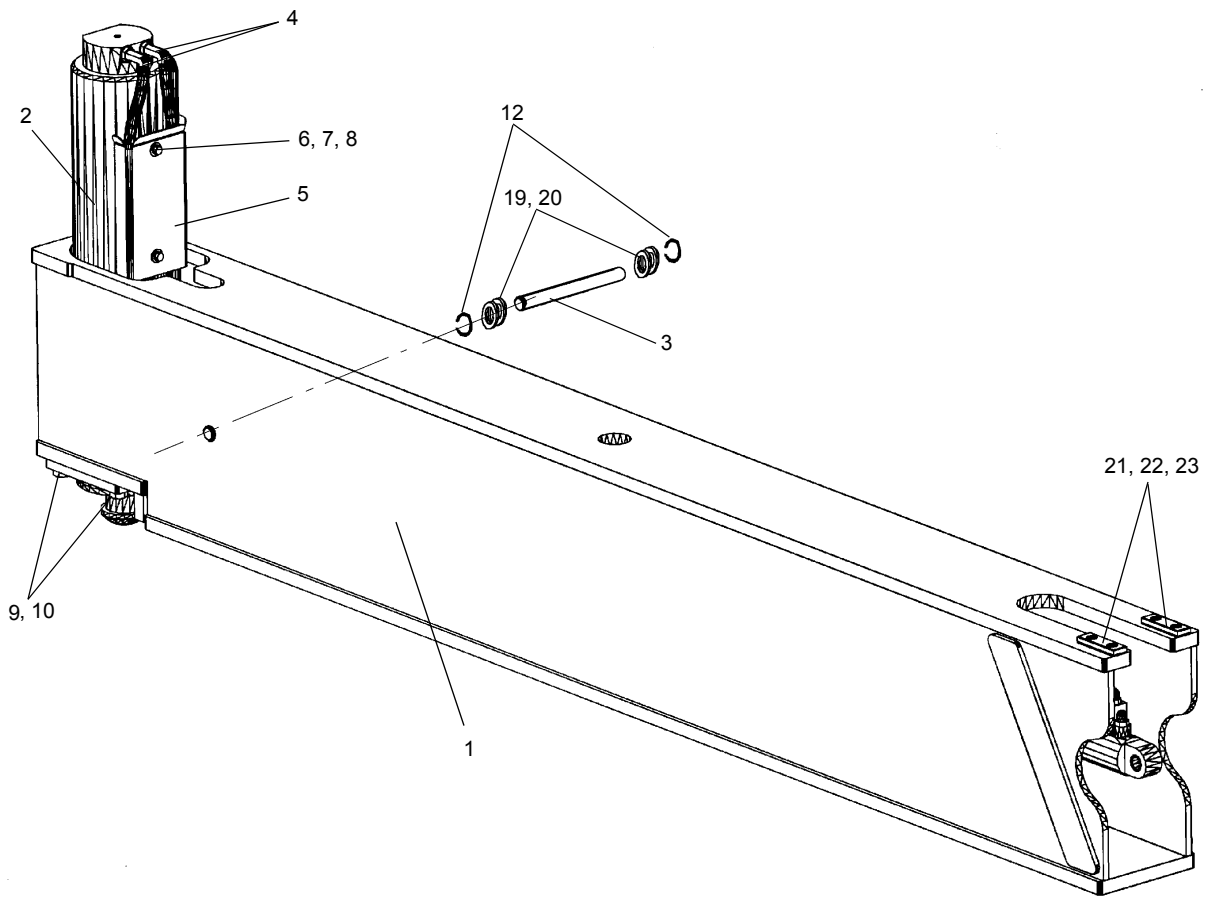
WHEN ORDERING PARTS, SPECIFY MODEL NUMBER, SERIAL NUMBER AND DESCRIPTION OF PARTS REQUIRED



FUEL TANK

DATE: Released 09-2011
 MODEL: RT700-1
 PAGE 2.13

GROUP
2



REF	PART NO.	DESCRIPTION	QTY	REF	PART NO.	DESCRIPTION	QTY
720A0032 (Rev B) <i>Outrigger Beam Assembly</i>							
1	720F0024	Outrigger Beam	1	14	12019-696	Plug	2
2	717 0001	CYL, Jack	1	15	716 0222-150	Hose	2
3	720 0035	Pin	1	16	706 4211	Clamp, Hose	4
4	12019-690	Adapter, 90°	2	17	1200-59	HHCS, 3/8-16 X 1.00	4
5	720 0340	Cover, Hose	1	18	1205-45	Nut, Lock, 3/8-16	4
6	1209-4	Washer, .38	2	19	1208-19	Bushing, MACH, 1 x 2 x .075	2
7	1210-20	Washer, Lock .38	2	20	1208-20	Bushing, MACH, 1 x 2 x .048	2
8	1200-57	HHCS, 3/8-16 X .75	2	21	MK211649A	Shim, 16 GA X 1.25 X 4.00	2
9	1242-108	HHCS, GRD 8, 3/4-10 X 2.25	4	22	MK211650A	Shim, 20 GA X 1.25 X 4.00	2
10	1209-40	Washer, Hard, 0.75	4	23	MK211651A	Wear Pad, 0.38 X 1.25 X 4.00	2
11	720 0043	CYL, Beam Extend	1	24	1209-3	Washer, 0.31 X .083	4
12	1220-82	Snap Ring	2	25	1200-35	HHCS, 5/16-18 X 1.50	4
13	1219-441	Adaptor	5				

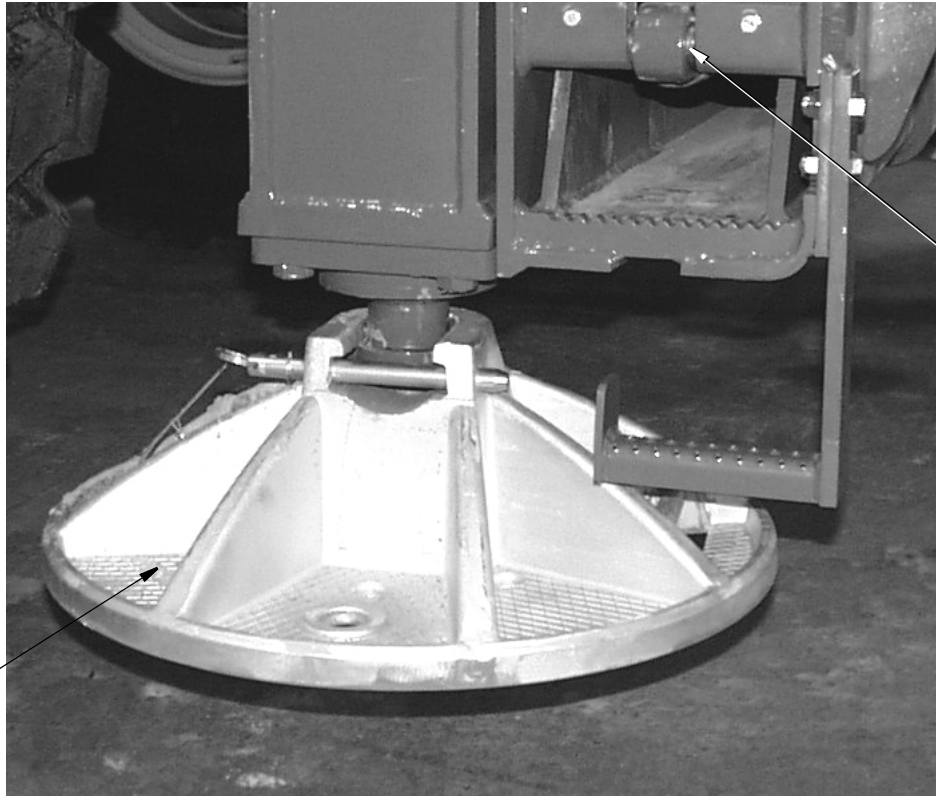
WHEN ORDERING PARTS, SPECIFY MODEL NUMBER, SERIAL NUMBER AND DESCRIPTION OF PARTS REQUIRED



OUTRIGGER ASSEMBLY

DATE: Revised 10-2010
 MODEL: RT700 & RT700-1
 PAGE 3.1

GROUP
3



Page 3.1

<u>REF</u>	<u>PART NO.</u>	<u>DESCRIPTION</u>	<u>QTY</u>
	720A0371	<i>Pad Assembly, Aluminum</i>	
1	718 0751	Pad, Outtrigger.....	4
	18Z2279D3	Washer, RBBR (1.15ID X 3OD X .38T)	8
	19Z286D2	Pin Snapper .250"DIA X 2.000"	8

WHEN ORDERING PARTS, SPECIFY MODEL NUMBER, SERIAL NUMBER AND DESCRIPTION OF PARTS REQUIRED

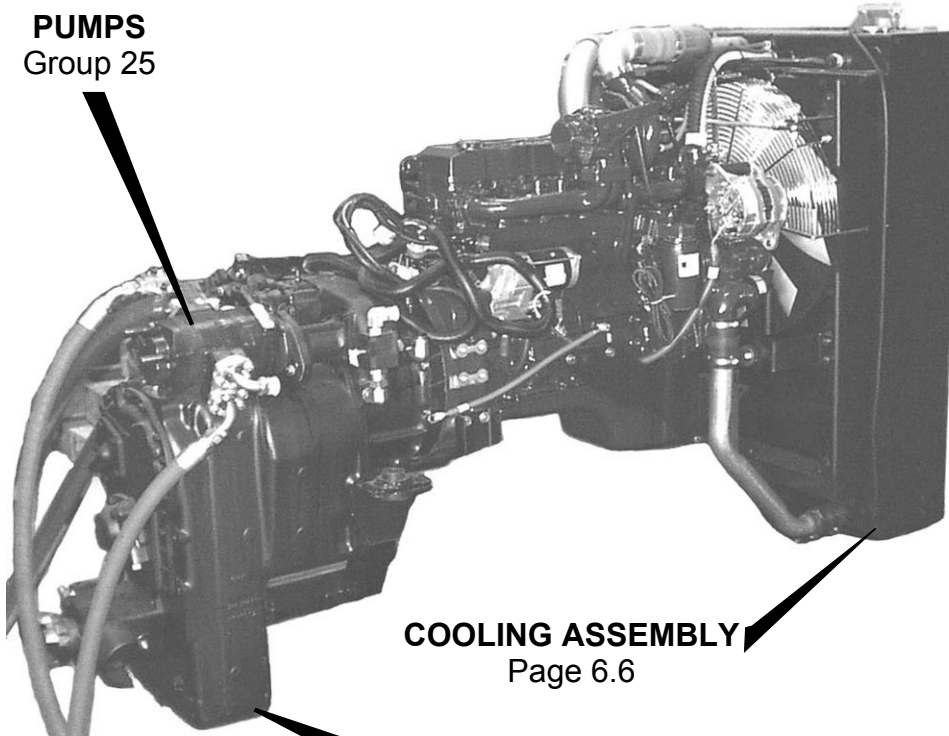


OUTRIGGER PADS

DATE: Revised 10-2010
 MODEL:RT700 & RT700-1
 PAGE 3.11

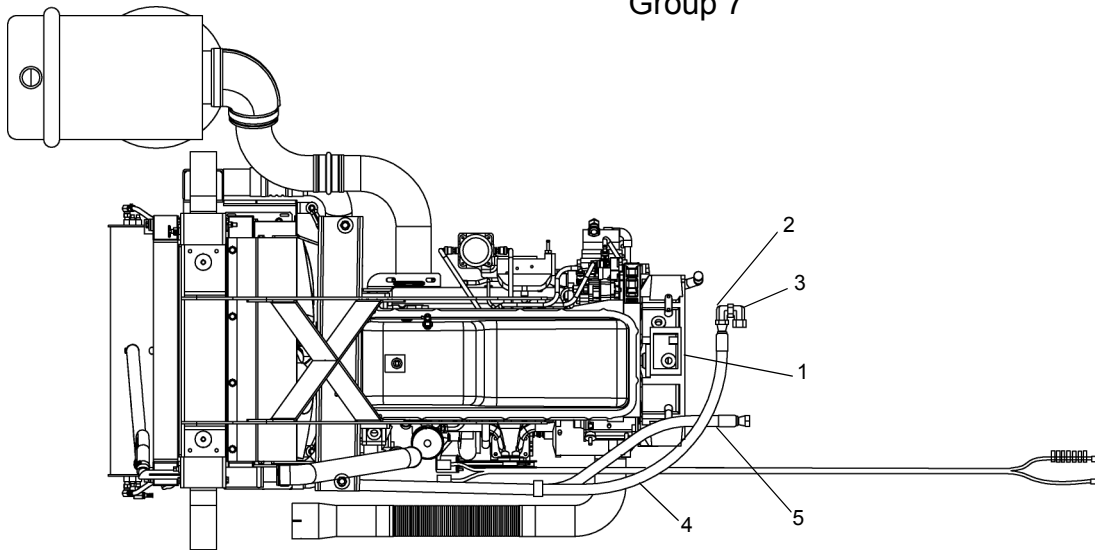
GROUP
3

PUMPS
Group 25



COOLING ASSEMBLY
Page 6.6

TRANSMISSION
Group 7



REF	PART NO	DESCRIPTION	QTY
	721A0369 (Rev K)	Engine ASSY.	
1	T118710	Engine Package, 275HP Export...	1
2	1219-583	Elbow 90° 12-12.....	1
3	12019-218	Elbow 90° 16-12.....	1
4	S01-312CA25-25	Capscrew 0.31 X 1.25.....	1
5	NTP-312C000-2C	Nut, Lock 0.31.....	1

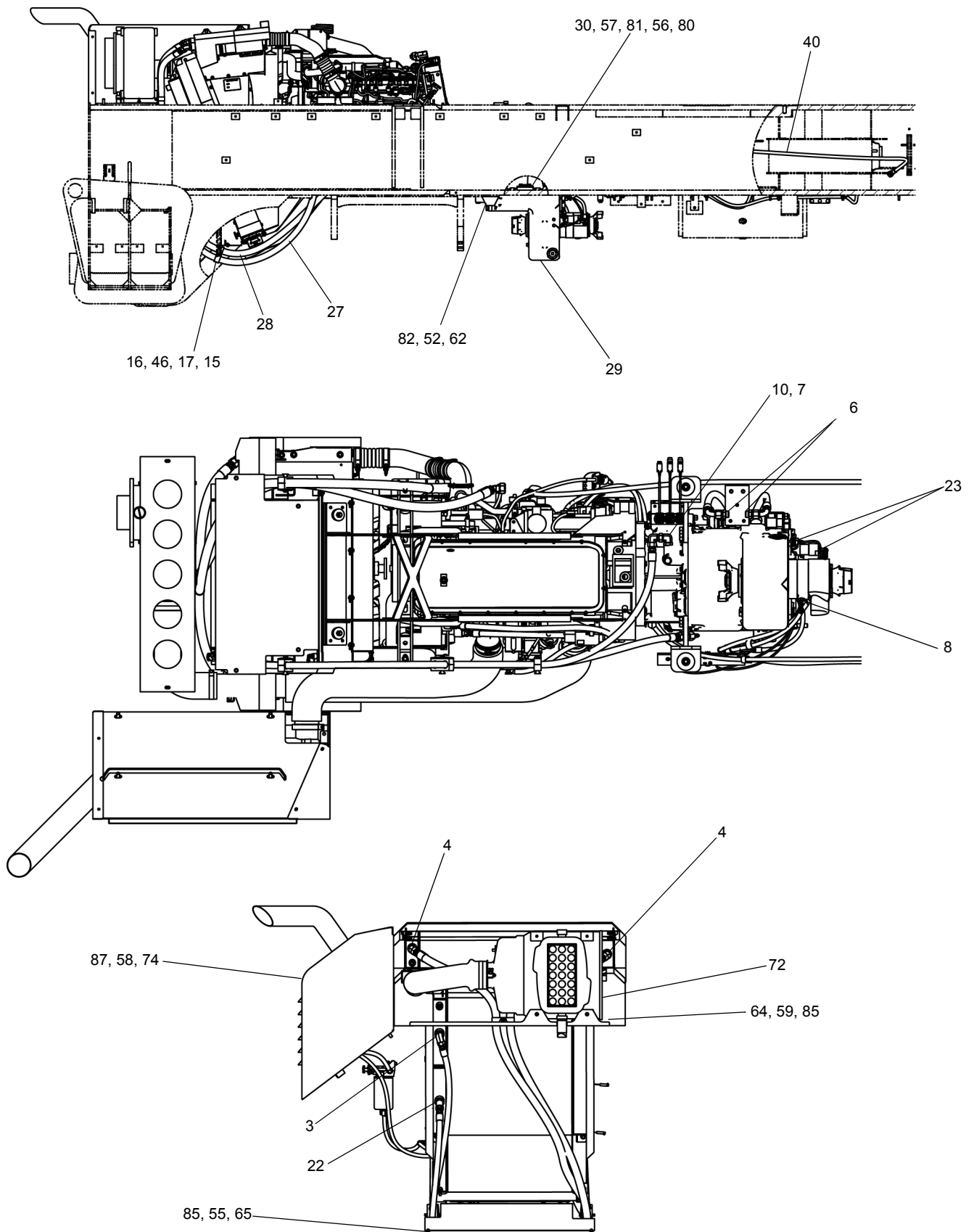
WHEN ORDERING PARTS, SPECIFY MODEL NUMBER, SERIAL NUMBER AND DESCRIPTION OF PARTS REQUIRED



ENGINE INSTALLATION
CUMMINS

DATE: Revised 08-2011
MODEL:RT700
PAGE 6.1

GROUP
6



VIEW B-B

SEE PAGE 6A.4 & 6A.5

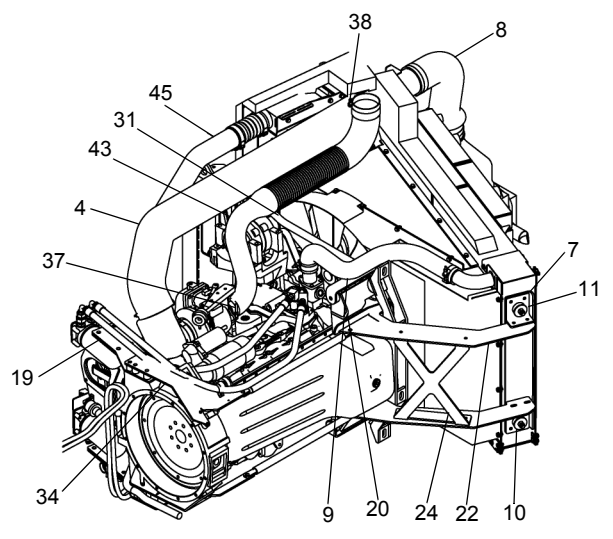
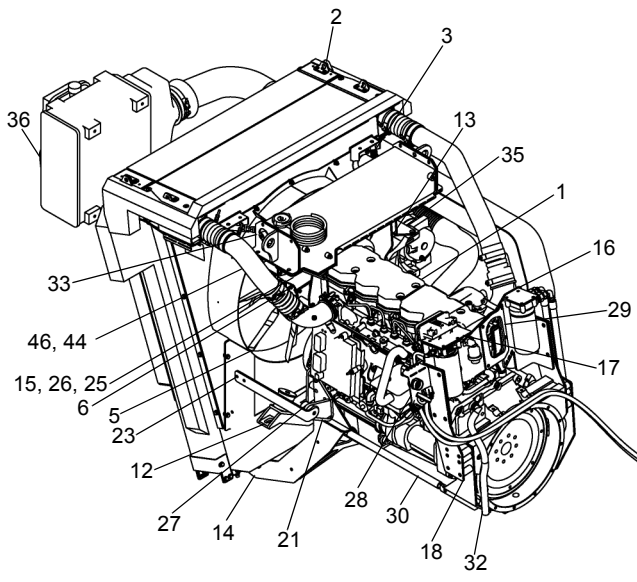
WHEN ORDERING PARTS, SPECIFY MODEL NUMBER, SERIAL NUMBER AND DESCRIPTION OF PARTS REQUIRED



**ENGINE INSTALLATION
(TIER 4i)**

DATE: Revised 09-2011
 MODEL: RT700-1
 PAGE 6A.3

**GROUP
6A**



REF	PART.NO	DESCRIPTION	QTY	REF	PART.NO	DESCRIPTION	QTY
T103327 (Rev A) Engine Sub ASSY Non-North America							
1	T103340	Engine, Non-North America.....	1	24	T105225	Cross Brace	1
2	T105163	Cooling Package.....	1	25	T105226	Bracket, Tank	1
3	T105164	Hose, Molded.....	1	26	T105227	Bracket, Tank	1
4	T105166	Air Intake Pipe ASSY.....	1	27	T105228	Plate, Front Mount.....	1
5	T105170	Fan	1	28	T105229	Bracket, Interface.....	1
6	T105171	Fan Clutch	1	29	T105230	Plate, Reinforcement.....	1
7	T105191	Angle.....	1	30	T105231	Support Rod	2
8	T105194	Pipe, Molded.....	1	31	T105232	Hose Guide	1
9	T105198	Hose, Molded.....	1	32	T105234	Bracket, Support	1
10	T105205	Bracket, Left Cross	1	33	T105235	Bracket, Lift	2
11	T105206	Bracket.....	1	34	T105236	Bracket, Support	1
12	T105213	Crossmember, Front.....	1	35	T105237	Bracket, Tank	1
13	T105214	Bracket, Lift.....	1	36	T105251	Air Cleaner	1
14	T105215	Bracket, Main Radiator	1	37	T116158	Clamp	1
15	T105216	Bracket, Anti-Rotation.....	1	38	T116159	Clamp	1
16	T105217	Bracket, Filter.....	1	39	T117579	Fuel Filter Mount	1
17	T105218	Bracket, Controller	1	40	T117580	Fuel Line	1
18	T105219	Bracket, Riser	1	41	T117581	Fuel Line	1
19	T105220	Bracket, Riser	1	42	T117582	Fuel Line	1
20	T105221	Wing Bracket, Right	1	43	T117680	Pipe, Flexible Exhaust.....	1
21	T105222	Wing Bracket, Left	1	44	T117681	Pipe, Cold Charged Air.....	1
22	T105223	Bracket, Main Radiator	1	45	T117682	Pipe, Hot Charged Air	1
23	T105224	Support, Mid Radiator.....	2	46	T117683	Elbow, Air Intake	1

WHEN ORDERING PARTS, SPECIFY MODEL NUMBER, SERIAL NUMBER AND DESCRIPTION OF PARTS REQUIRED



ENGINE SUBASSY (NON-NORTH AMERICA)

DATE: Released 09-2011
 MODEL: Non-North America
 PAGE 6B.5

GROUP
6B

SEE PAGE 7.8

REF	PART NO	DESCRIPTION	QTY	REF	PART NO.	DESCRIPTION	QTY
				Low (1st) Clutch & Output GroupRef			
1	217640	Low Speed Clutch Shaft Pilot Bearing	1	51	217691	Cap-Front Bearing.....	1
3	217639	2nd Gear Bearing	1	52	217655	Shim, .004	AR
4	217638	Bearing Retaining Ring Retainer	1	52A	217656	Shim, .007	AR
5	217633	Low Speed Gear Bearing Retainer Ring....	1	52B	217657	Shim, .010	AR
6	217636	Low Speed Gear Bearing Assembly.....	1	52C	217658	Shim, .020	AR
7	217637	Low Speed Gear	1	53	217659	Front Bearing Cap O-Ring	1
8	217577	Clutch Hub Oil Baffle Ring	1	54	217660	Front Bearing Cup.....	1
9	217634	Spring Retaining Ring Retainer	1	55	217661	Front Bearing Cone.....	1
9A	217635	Washer - Not Shown.....	1	56	217662	Output Gear Thrustwasher.....	1
10	217484	Spring Retaining Ring	1	57	217663	Output Gear Bearing	1
11	217632	Piston Return Disc Springs.....	5	58	217663	Output Gear Bearing	1
12	217631	Piston to Piston Return Disc Spacers.....	1	59	217664	Output Gear Bearing Inner Race	1
13	217608	End Plate Retainer Ring	1	60	217665	Output Shaft & Bushing Assy	1
14	217589	End Plate	1	(Includes Item 61)			
15	217630	Clutch Inner Disc	9	61	217666	Output Shaft Bushing	1
16	217580	Clutch Outer Disc	9	62	217693	Capscrew	1
17	217610	Clutch Piston	1	63	217612	Idler Shaft Front Bearing	1
18	217584	Clutch Piston Outer Seal	1	63A	217613	Front Bearing Spacer	1
19	217585	Clutch Piston Inner Seal	1	63B	217594	Bearing Spacer Ret Ring.....	1
20	217641	Low Speed Clutch Drum	1	64	217614	Idler Shaft Front Bearing	1
21	217642	Low Shaft Rear Bearing Cone.....	1	65	217615	Idler Shaft.....	1
22	217643	Low Shaft Rear Bearing Cup	1	66	217616	Idler Shaft Gear Key.....	1
23	217644	Low Shaft Pressure Piston Ring	1	67	217617	Idler Shaft Gear.....	1
24	214645	Rear Bearing O-Ring	1	70	217667	Low Range Gear	1
25	217649	Bearing Cap Shim, .004	1	71	217668	High Low Shift Hub.....	1
25A	217650	Bearing Cap Shim, .007	1	72	217678	Disconnect Bearing Cap	1
25B	217651	Bearing Cap Shim, .010	1	73	217680	Piston Ring.....	1
25C	217652	Bearing Cap Shim, .020	10	74	217681	Disconnect Piston	1
26	217646	Rear Bearing Cap.....	1	75	217629	Speedo Drive Gear.....	1
27	217437	Lockwasher	5	76	217628	Rear Bearing Cap	1
28	217647	Screw.....	5	77	217623	Lockwasher	3
29	217475	Rear Bearing Cap Plug.....	1	78	217624	Capscrew	3
30	217648	O-Ring-Pressure Tube.....	1	80	217625	Speedo Tube Nut	1
31	217669	Shift Hub Sleeve	1	81	217626	Capscrew	1
32	217670	High Range Gear.....	1	82	217627	Lockwasher	1
33	217671	Output Gear Inner Race	1	83	217623	Lockwasher	4
34	217663	Output Gear Bearing	1	84	217694	Speed Sensor O-Ring	1
35	217663	Output Gear Bearing	1	85	217695	Speed Sensor Hole Plug	1
36	217662	Thrustwasher	1	86	217692	Disconnect Housing Oil Seal.....	1
37	217672	Output Shaft Rear Bearing Cone.....	1	87	217689	Bearing Retainer Ring.....	1
38	217622	Idler Shaft Shaft Bearing Cap Gasket.....	1	88	217690	Bearing	1
39	217621	Idler Shaft Nut.....	1	89	217689	Bearing Retainer Ring	1
40	217620	Rear Bearing Locating Ring	1	90	217688	Disconnect Housing	1
41	217619	Idler Shaft Rear Bearing Lockball	1	91	217687	O-Ring.....	1
42	217618	Idler Shaft Rear Bearing	1	92	217686	Disconnect Shaft Assy	1
43	217673	Output Shaft Rear Bearing Cone.....	1	93	217594	Snap Ring	1
44	217674	Bearing Retainer O-Ring	1	94	217593	Snap Ring Retainer	1
45	217675	Bearing Retainer O-Ring	1	95	217685	Thrustwasher	1
46	217676	Adapter-Output Shaft.....	1	96	217684	Piston Return Spring	1
47	217677	Bearing Retainer O-Ring	1	97	217683	Disconnect Piston	1
48	217653	Front Bearing Cap Oil Seal.....	1	98	217682	Piston Ring Expander Spring	1
49	217654	Capscrew.....	4				
50	247623	Lockwasher	4				

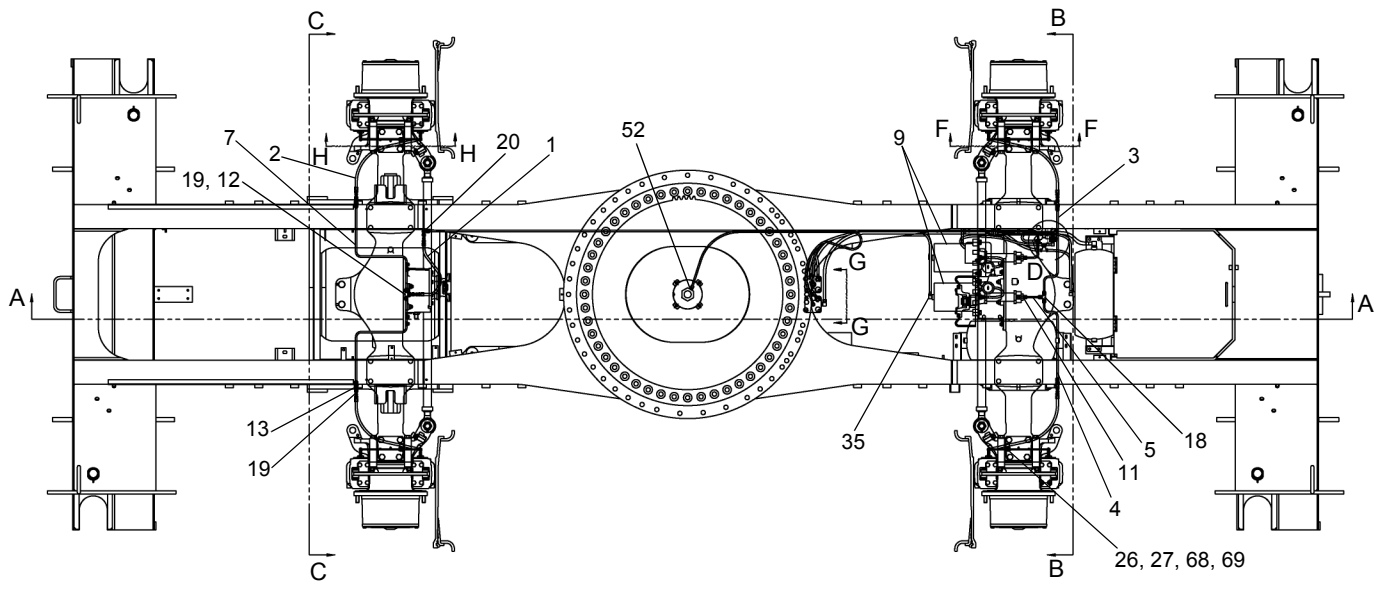
WHEN ORDERING PARTS, SPECIFY MODEL NUMBER, SERIAL NUMBER AND DESCRIPTION OF PARTS REQUIRED



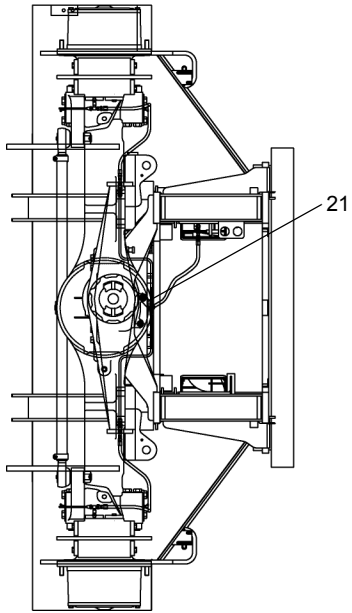
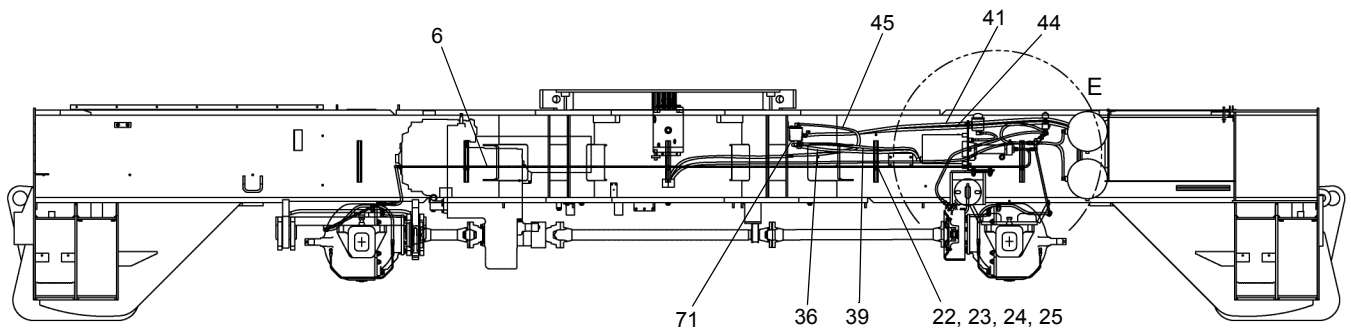
TRANSMISSION LOW 1ST CLUTCH GROUP

DATE: Revised 09-2011
 MODEL: RT700 & RT700-1 & Non-North America
 PAGE 7.9

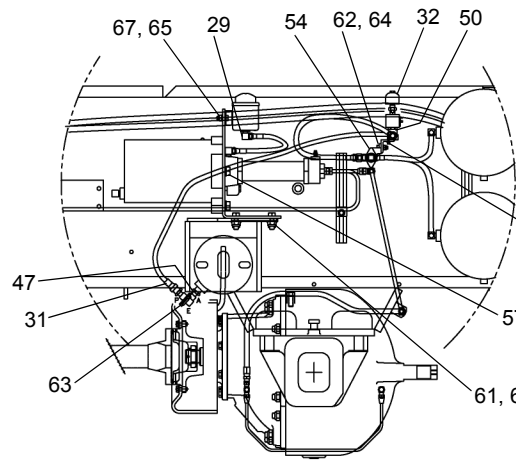
GROUP
7



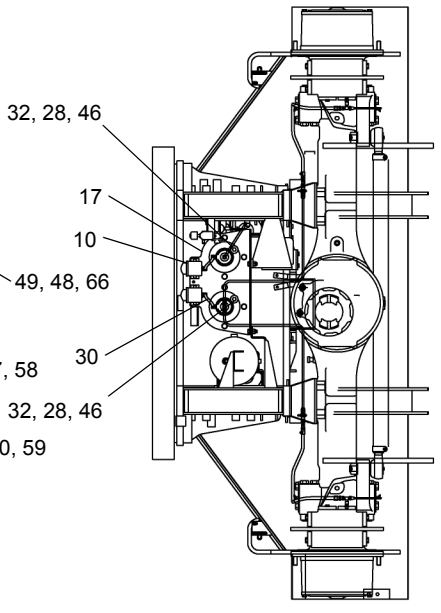
SECTION A-A



SECTION C-C



DETAIL E



SECTION B-B

SEE PAGE 10.2

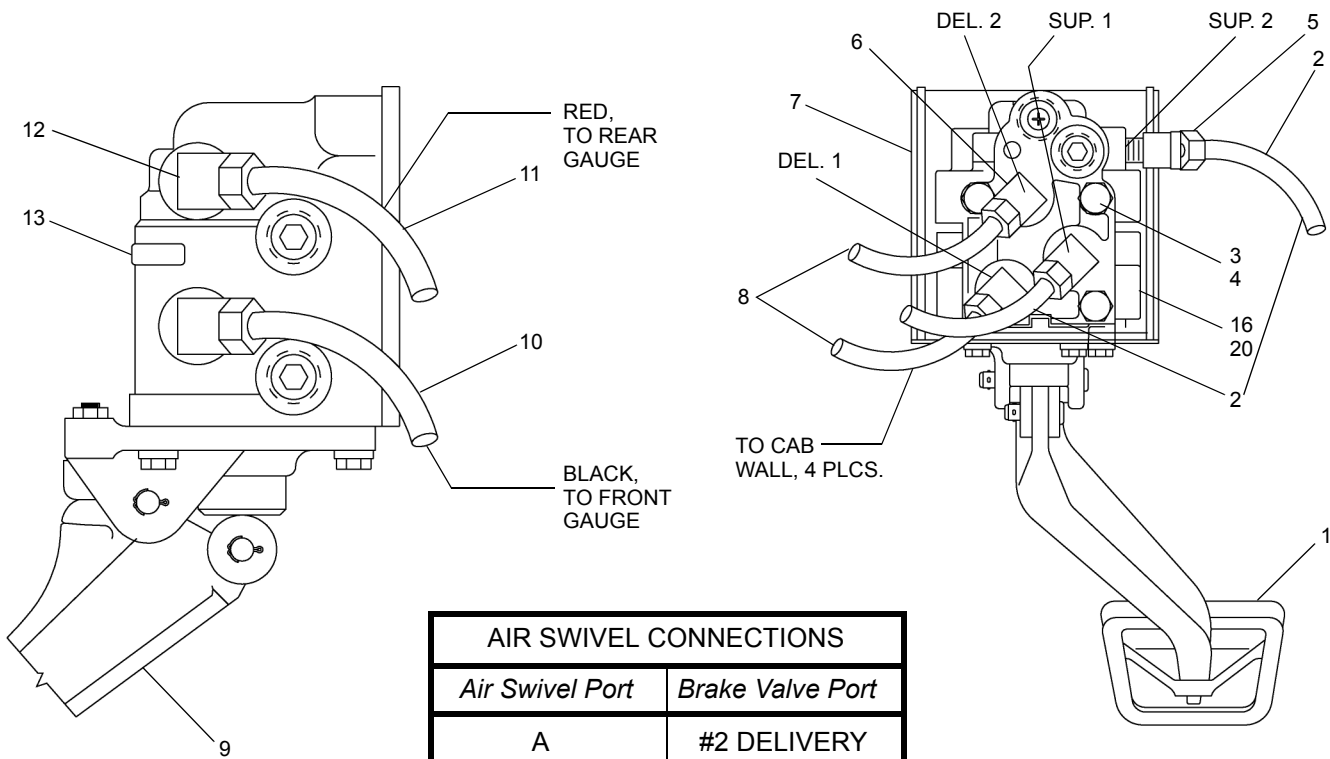
WHEN ORDERING PARTS, SPECIFY MODEL NUMBER, SERIAL NUMBER AND DESCRIPTION OF PARTS REQUIRED



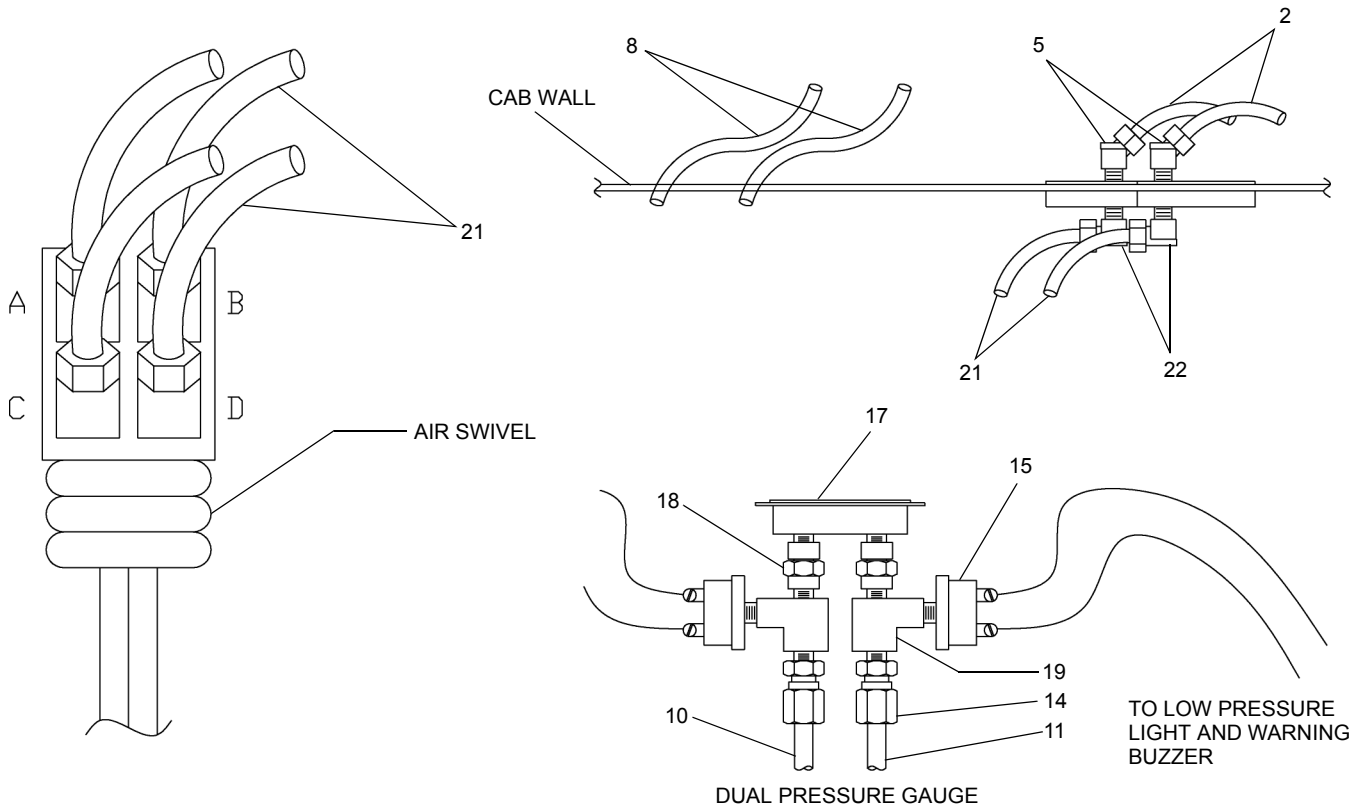
BRAKE LINE SYSTEM

DATE: Released 09-2011
 MODEL: RT700
 PAGE 10.1

GROUP
10



AIR SWIVEL CONNECTIONS	
<i>Air Swivel Port</i>	<i>Brake Valve Port</i>
A	#2 DELIVERY
B	#2 SUPPLY
C	#1 DELIVERY
D	#1 SUPPLY



SEE PAGE 10.11

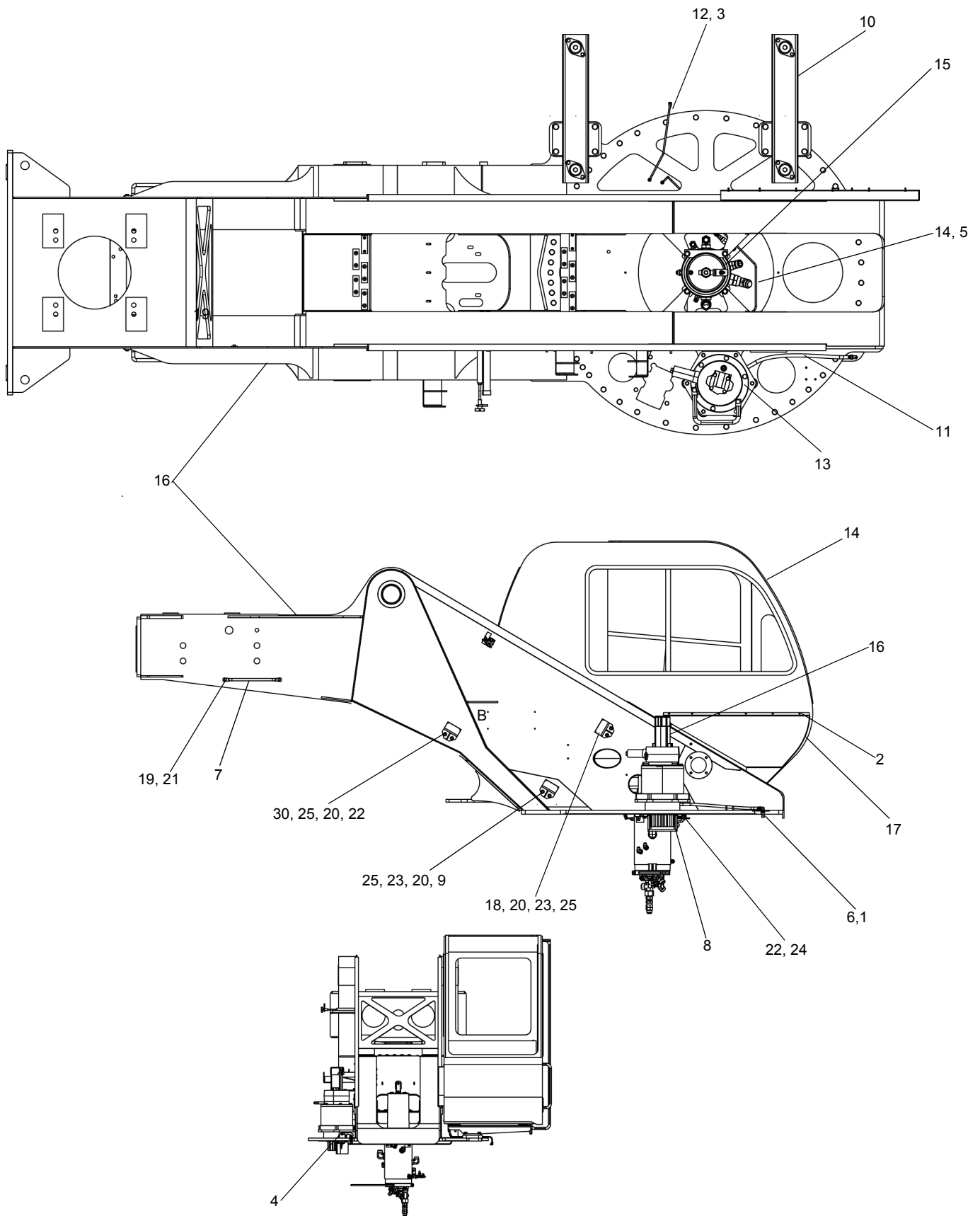
WHEN ORDERING PARTS, SPECIFY MODEL NUMBER, SERIAL NUMBER AND DESCRIPTION OF PARTS REQUIRED



AIR BRAKE KIT

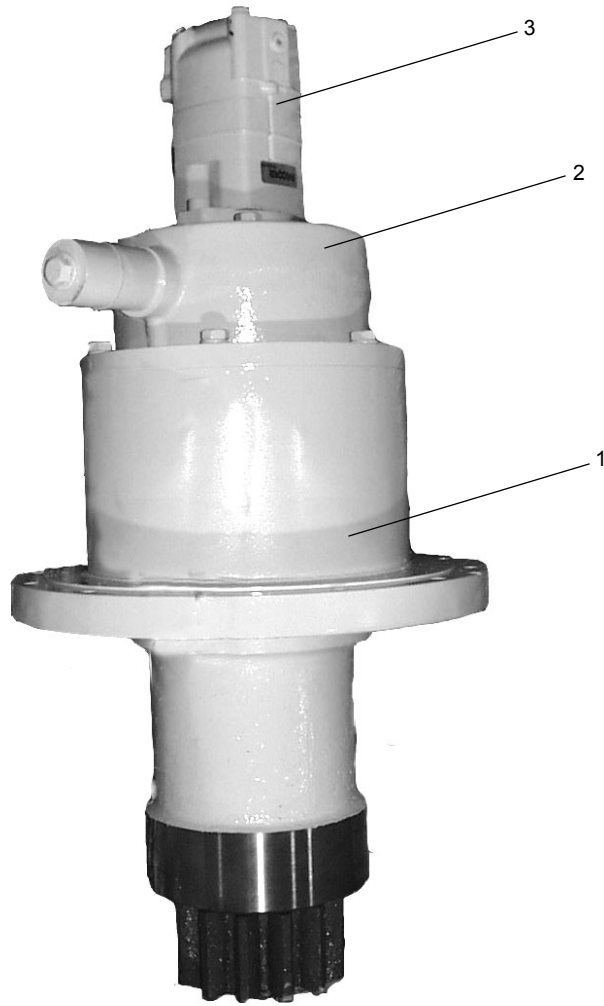
DATE: Revised 10-2010
 MODEL: RT700 & RT700-1
 PAGE 10.11

GROUP
10



SEE PAGE 12.2

WHEN ORDERING PARTS, SPECIFY MODEL NUMBER, SERIAL NUMBER AND DESCRIPTION OF PARTS REQUIRED



<u>REF</u>	<u>PART.NO</u>	<u>DESCRIPTION</u>	<u>QTY</u>
	721 0024 (Rev C)	Swing Drive (Braden)	
1	Page 22.2	Swing Reduction Unit.....	1
2	Page 22.2	Swing Brake	1
3	Page 22.3	Swing Motor	1

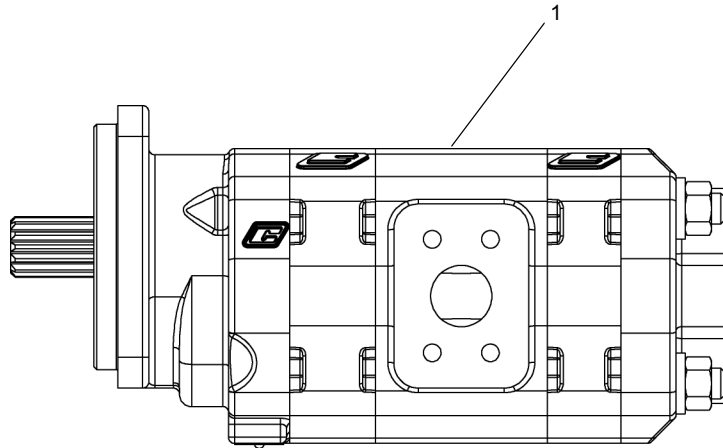
WHEN ORDERING PARTS, SPECIFY MODEL NUMBER, SERIAL NUMBER AND DESCRIPTION OF PARTS REQUIRED



**SWING DRIVE
BRADEN**

DATE: Revised 09-2003
 MODEL:RT700
 PAGE 22.1

**GROUP
22**



<u>REF</u>	<u>PART NO.</u>	<u>DESCRIPTION</u>	<u>QTY</u>
1	T119631 (Rev A)	<i>Pump, Winch</i>	

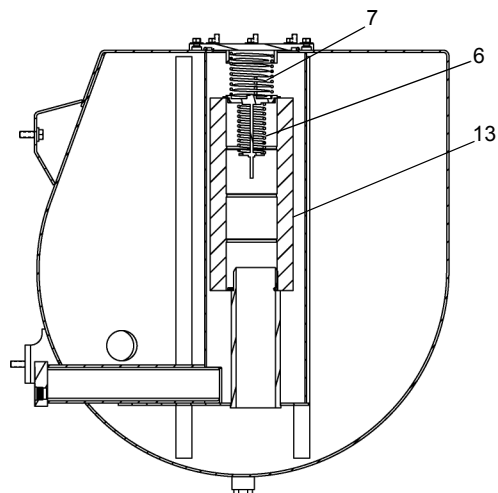
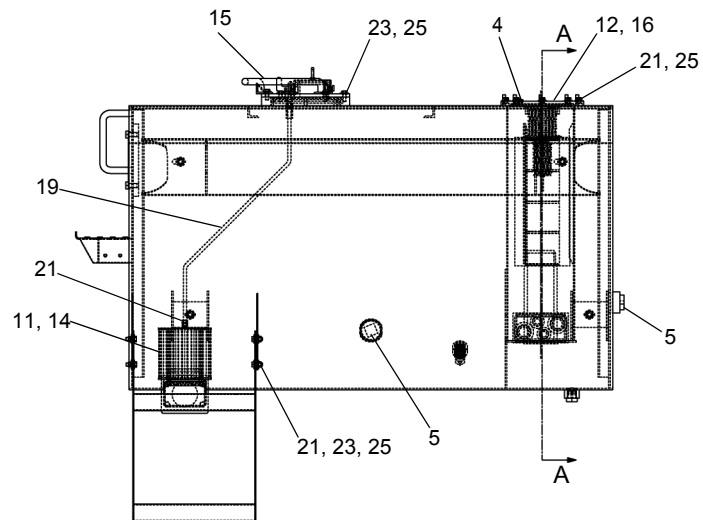
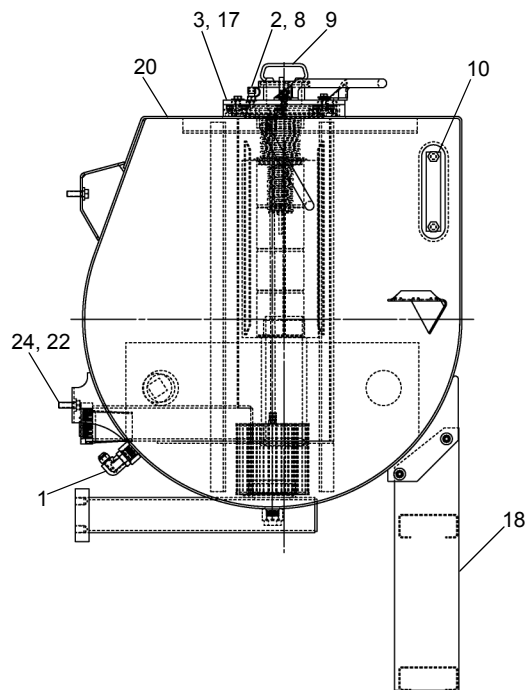
WHEN ORDERING PARTS, SPECIFY MODEL NUMBER, SERIAL NUMBER AND DESCRIPTION OF PARTS REQUIRED



**HYDRAULIC PUMP
WINCH**

DATE: Released 09-2011
 MODEL: RT700-1
 PAGE 24.5

**GROUP
24**



SECTION A - A

REF	PART NO.	DESCRIPTION	QTY	REF	PART NO.	DESCRIPTION	QTY
721A0209 (Rev D) Reservoir Hydraulic Assembly							
1	12019-517	Adapter, 90, -10 -12.....	1	15	709F6170	Handle	1
2	12019-558	Dust Cap.....	1	16	709F7778	Cover	1
3	1218-89	O-Ring, 7.975ID X 8.935OD X .210.....	1	17	713F0118	Cover	1
4	1219-763	4 O-Ring Plug	1	18	713F0144	Step	1
5	1219-869	2 NPTF Plug	2	19	721-0214	Rod	1
6	22919	By-Pass Valve	1	20	721F0189	Hydraulic Reservoir	1
7	22920	Spring	1	21	NTP-375C000-2C	Nut ,HEX TPLCK	
8	375-6203	#4 Oring Test Port Coupling	1			0.375-16,ST Z GRC.....	14
9	37542	Fill Cap.....	1	22	S01-500CA00-25	SCR, HHCS 0.50-13X1.50, ST Z GR5	4
10	434-4020	Gauge Level	1	23	SHF-375CA00-25	SCR ,HHCS FT 0.375-16X1.00, STZ G5	10
11	460-0319	O-Ring ARP 346 70B.....	1	24	WAJ-500X000-Y2	WSH, FL HRD A-REG 0.50, ST YZ	4
12	460-0436	O-Ring ARP 441 70B.....	1			WSH, FL TYP A-WID 0.375, ST Z.....	22
13	708-6449	Filter, Return	1				
14	709-7783	Filter, Suction.....	1	25	WAW-37WX000-20		

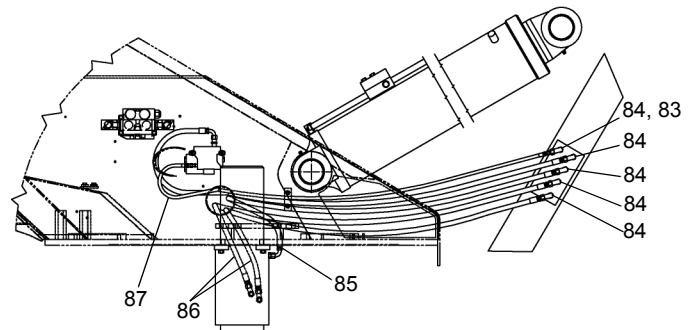
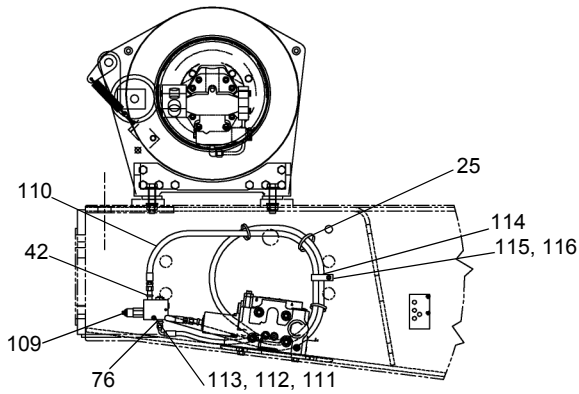
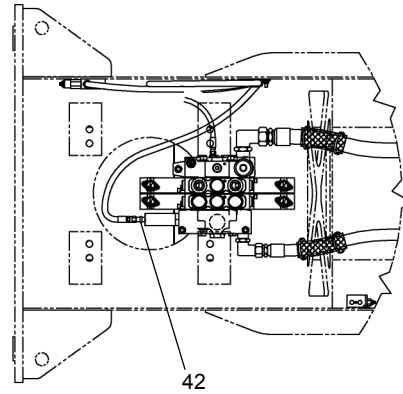
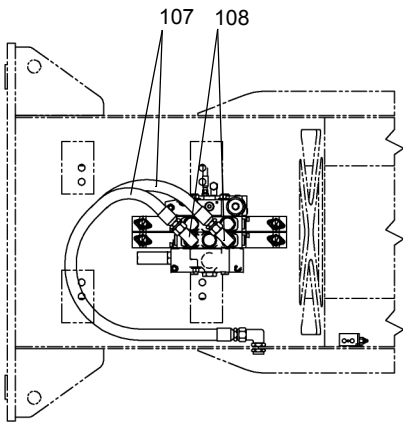
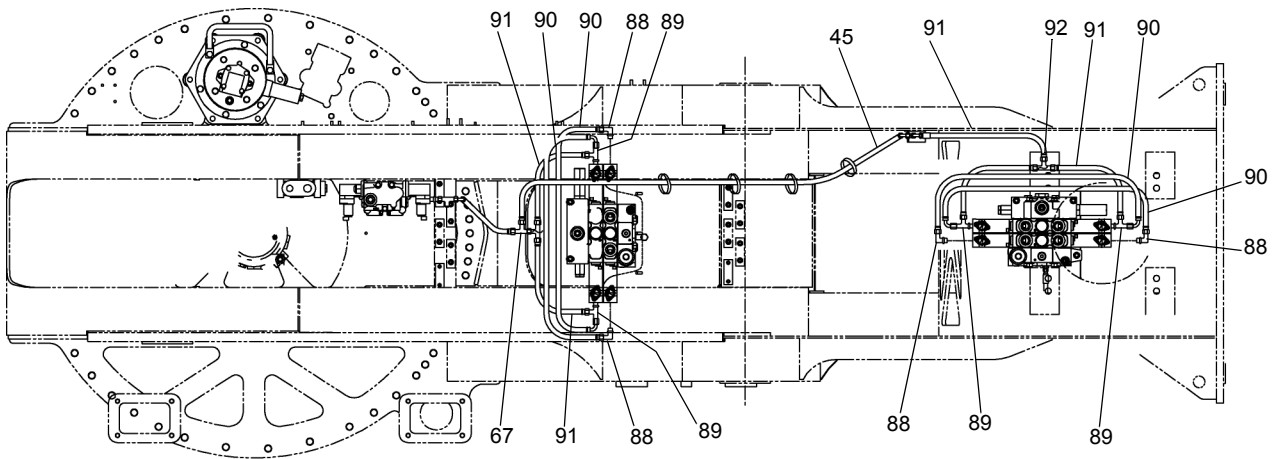
WHEN ORDERING PARTS, SPECIFY MODEL NUMBER, SERIAL NUMBER AND DESCRIPTION OF PARTS REQUIRED



HYDRAULI TANK ASSY

DATE: Released 09-2011
 MODEL:RT700
 PAGE 25.7

GROUP
25



SEE PAGE 25.20 & 25.21

WHEN ORDERING PARTS, SPECIFY MODEL NUMBER, SERIAL NUMBER AND DESCRIPTION OF PARTS REQUIRED



UPPER HYDRAULICS

DATE: Revised 09-2011
MODEL: RT700 & RT700-1
PAGE 25.17

GROUP
25

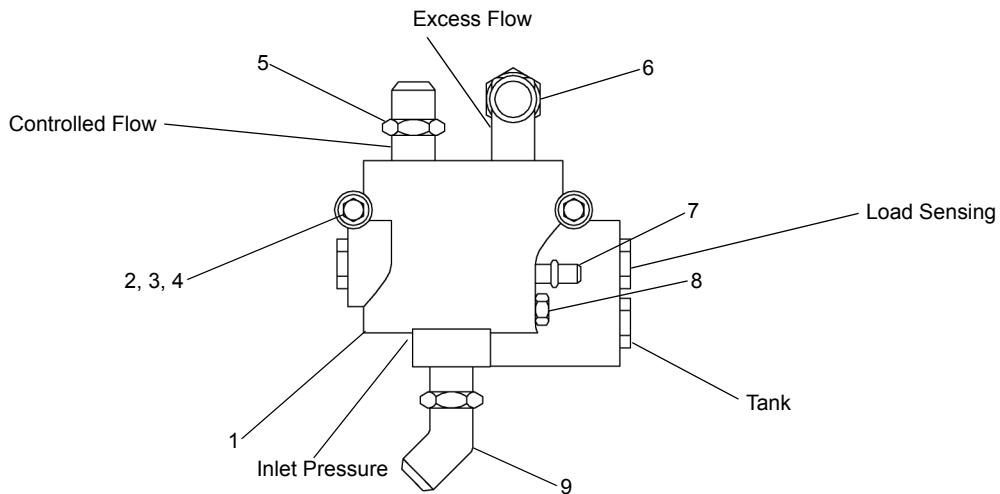
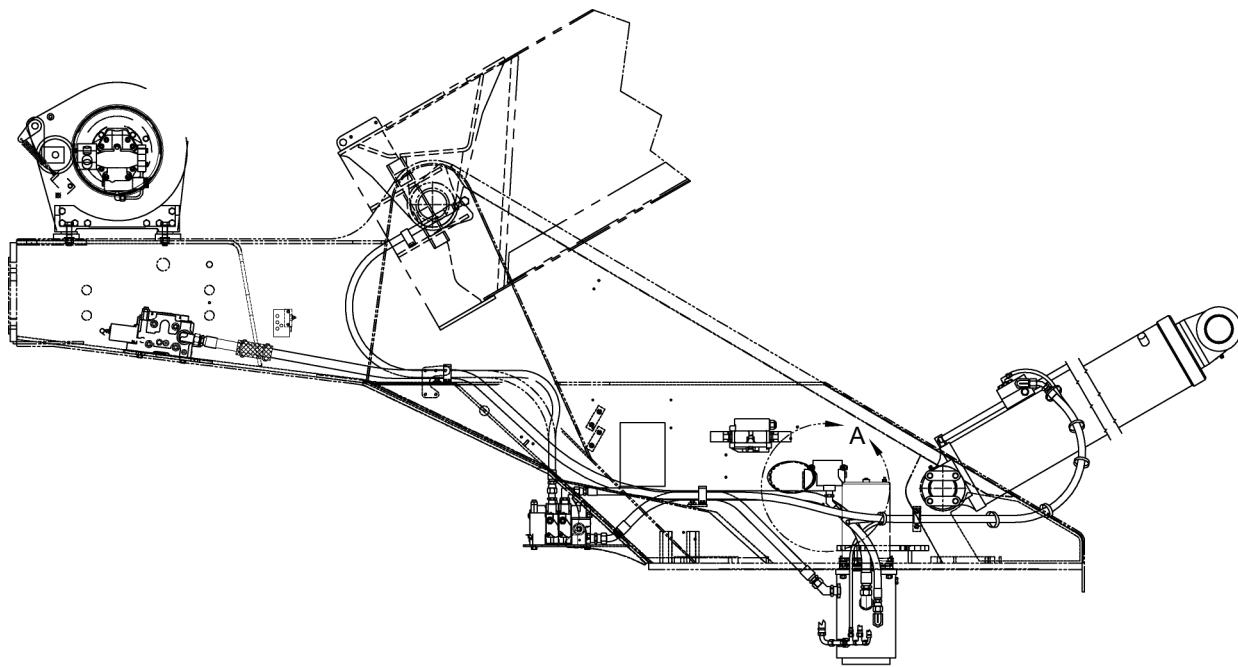
CLICK HERE TO **DOWNLOAD** THE COMPLETE MANUAL

- Thank you very much for reading the preview of the manual.
- You can download the complete manual from: www.heydownloads.com by clicking the link below



- Please note: If there is no response to CLICKING the link, please download this PDF first and then click on it.

CLICK HERE TO **DOWNLOAD** THE COMPLETE MANUAL



DETAIL A

REF	PART NO.	DESCRIPTION	QTY
	721A0140 (Rev N)	Upper Hydraulic Assembly (Contd..)	
1	708 2350	Valve, Steering Priority	1
2	1200-47	Capscrew, 0.31C x 3	2
3	1210-17	Washer, Lock, .31	2
4	1209-3	Washer, Flat, .31	2
5	1219-441	Adapter, STR, -8	1
6	1219-802	Adapter, 90°, -12	1
7	1219-959	Adapter, STR, -4	1
8	1219-763	Plug, -4	1
9	1219-663	Adapter, 45°, -12	1

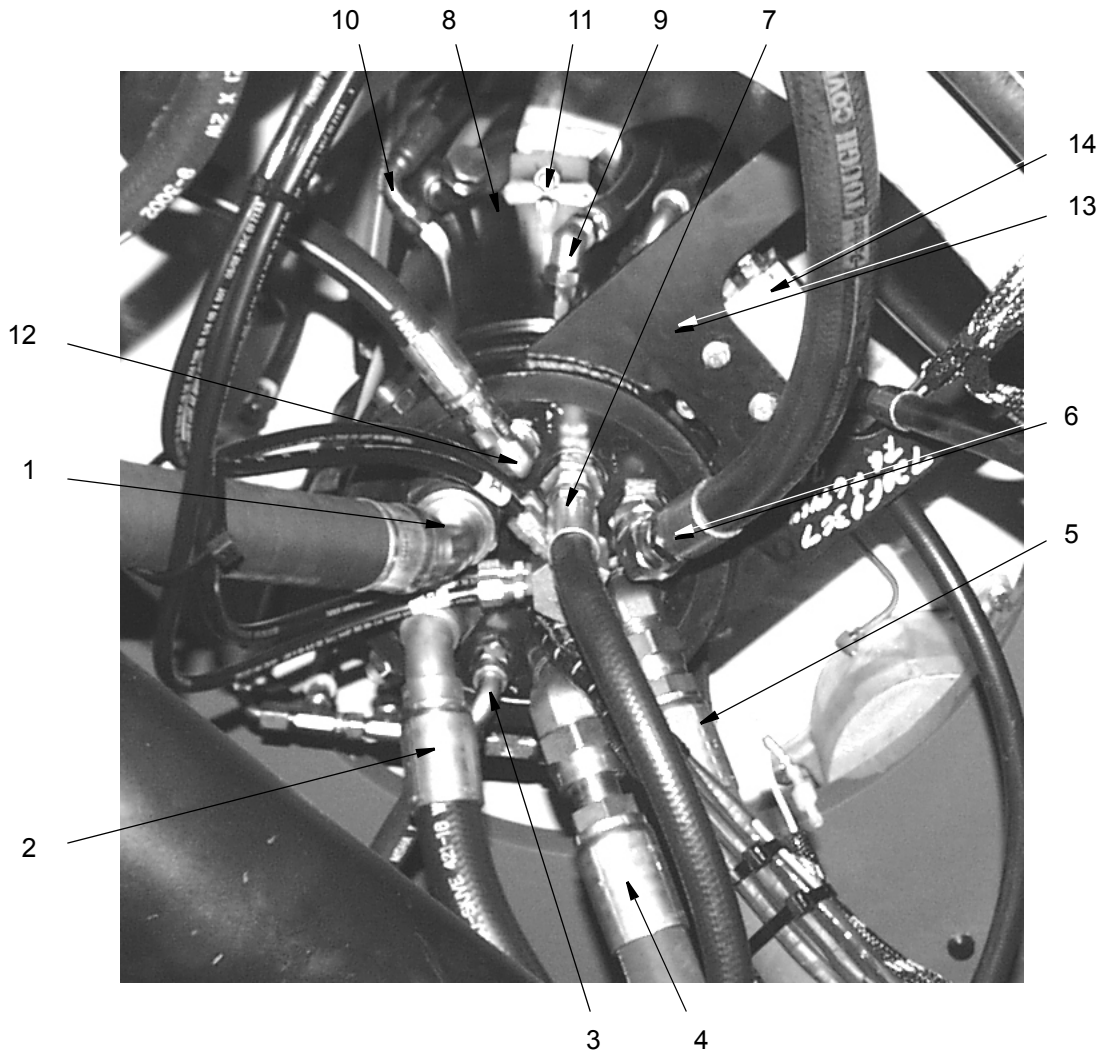
WHEN ORDERING PARTS, SPECIFY MODEL NUMBER, SERIAL NUMBER AND DESCRIPTION OF PARTS REQUIRED



**UPPER HYDRAULICS
PRIORITY VALVE**

DATE: Revised 03-2011
 MODEL: RT700 & RT700-1
 PAGE 25.27

**GROUP
25**



REF	PART NO	DESCRIPTION	QTY	REF	PART NO.	DESCRIPTION	QTY.
1	720 0313-44	Hose.....	1	7	709 5700-50	Hose	1
	1219-661	Fitting (Port 3).....	1		1219-810	Fitting (Port 8).....	1
2	721 0275-35	Hose.....	1	8	Page 25.27	Rotary Manifold.....	1
	1219-890	Adapter (Port 1)	1	9	709 5664-111	Hose	1
	12019-146	Tee.....	1		1219-470	Fitting (Port 6).....	1
	1219-687	Reducer	1	10	721 0253-23.5	Hose	1
	12019-785	Valve, Check.....	1		1219-802	Fitting (Port 7)	1
	12019-784	Union.....	1	11	709 5008-104	Hose	1
3	707 4078-70	Hose.....	1		1219-441	Fitting (Port 9).....	1
	1219-441	Fitting (Port 6)	1	12	1219-470	Fitting (Port 5).....	1
4	720 0236-57	Hose.....	1	13	720F0307	Torque Arm.....	1
	376 1001	Fitting (Port 4).....	1	14	430 8844	Valve, Axle Lockout	1
5	721 0412-54	Hose.....	1				
	376 1001	Fitting (Port 2).....	1				
6	720 0298-63	Hose	1				
	1219-290	Fitting, 45 deg. (Port 7)	1				

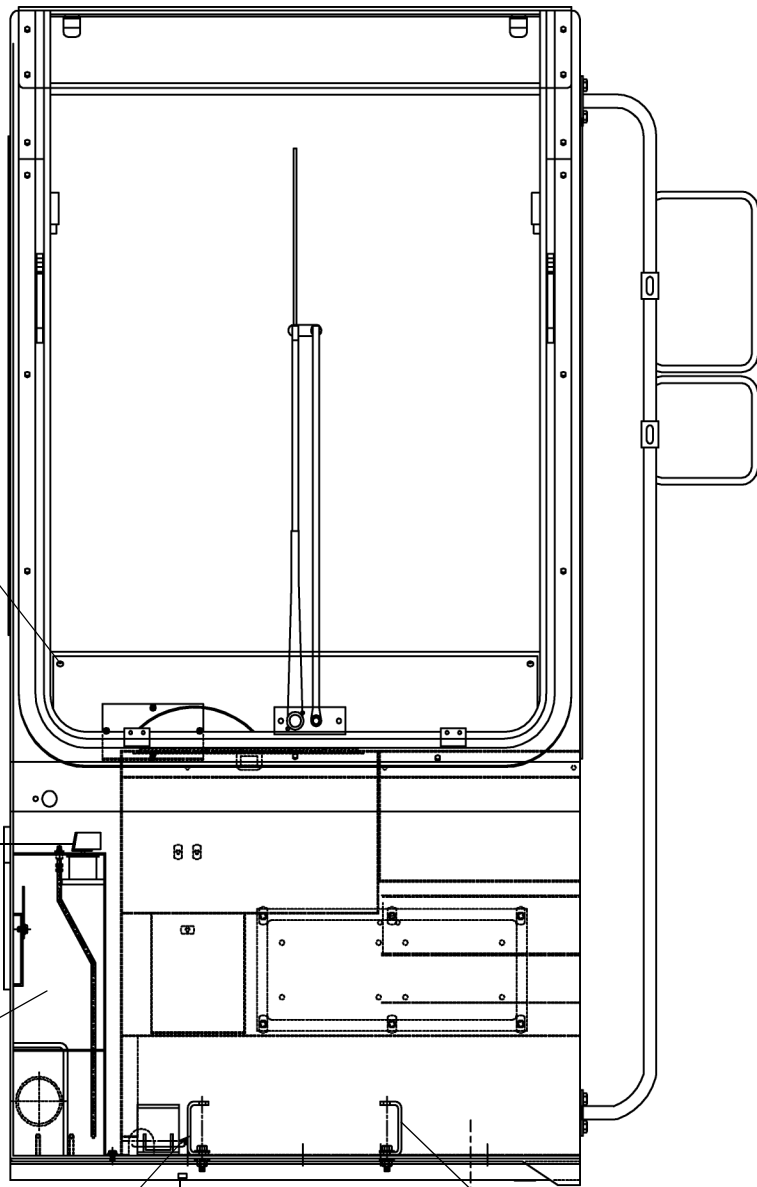
WHEN ORDERING PARTS, SPECIFY MODEL NUMBER, SERIAL NUMBER AND DESCRIPTION OF PARTS REQUIRED



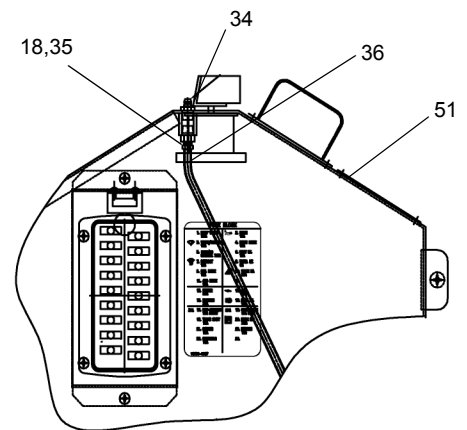
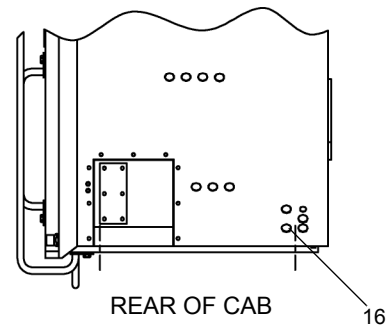
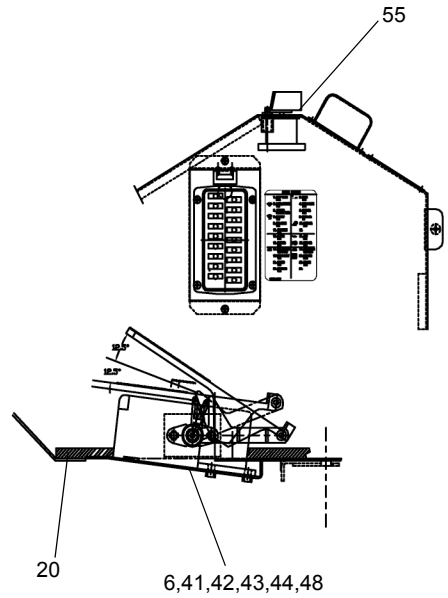
**CENTER SWIVEL ASSEMBLY
LOWER**

DATE: Revised 10-2010
MODEL:RT700 & RT700-1
PAGE 25.37

**GROUP
25**



FRONT OF CAB



CABLE WAY GREASE LINE PIPING-FORM AT ASSY

SEE PAGE 27.6

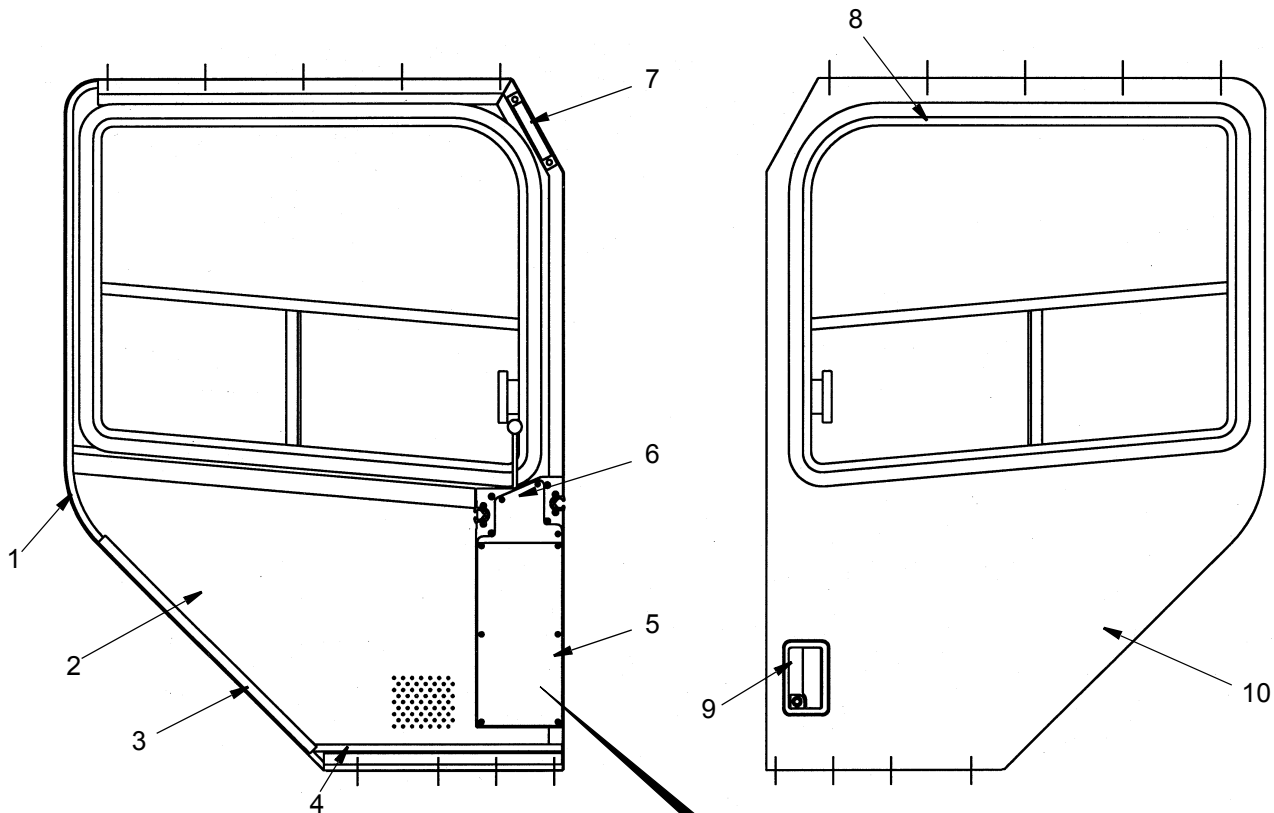
WHEN ORDERING PARTS, SPECIFY MODEL NUMBER, SERIAL NUMBER AND DESCRIPTION OF PARTS REQUIRED



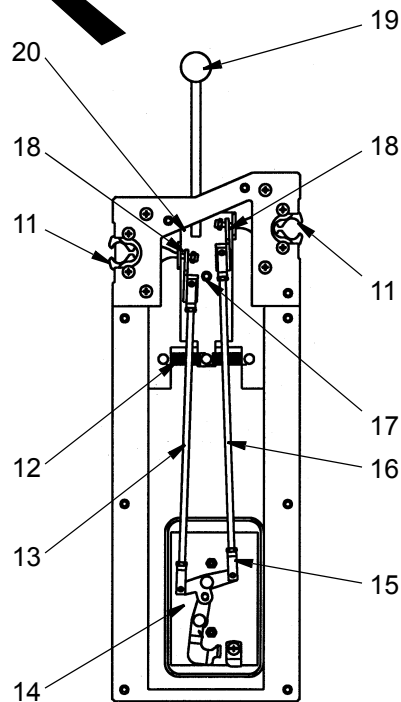
OPERATOR'S CAB ASSY

DATE: Released 09-2011
MODEL:RT700-1
PAGE 27.5

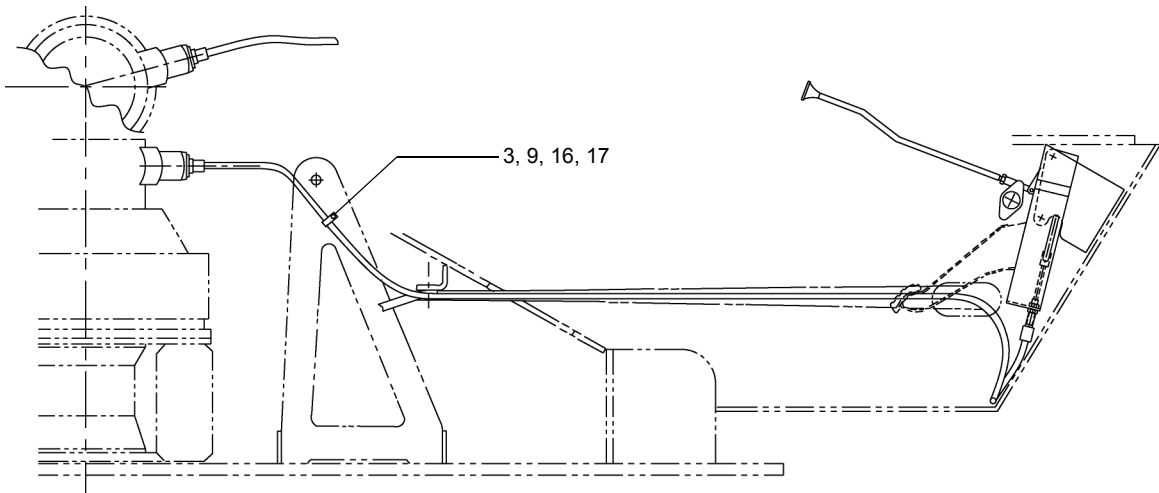
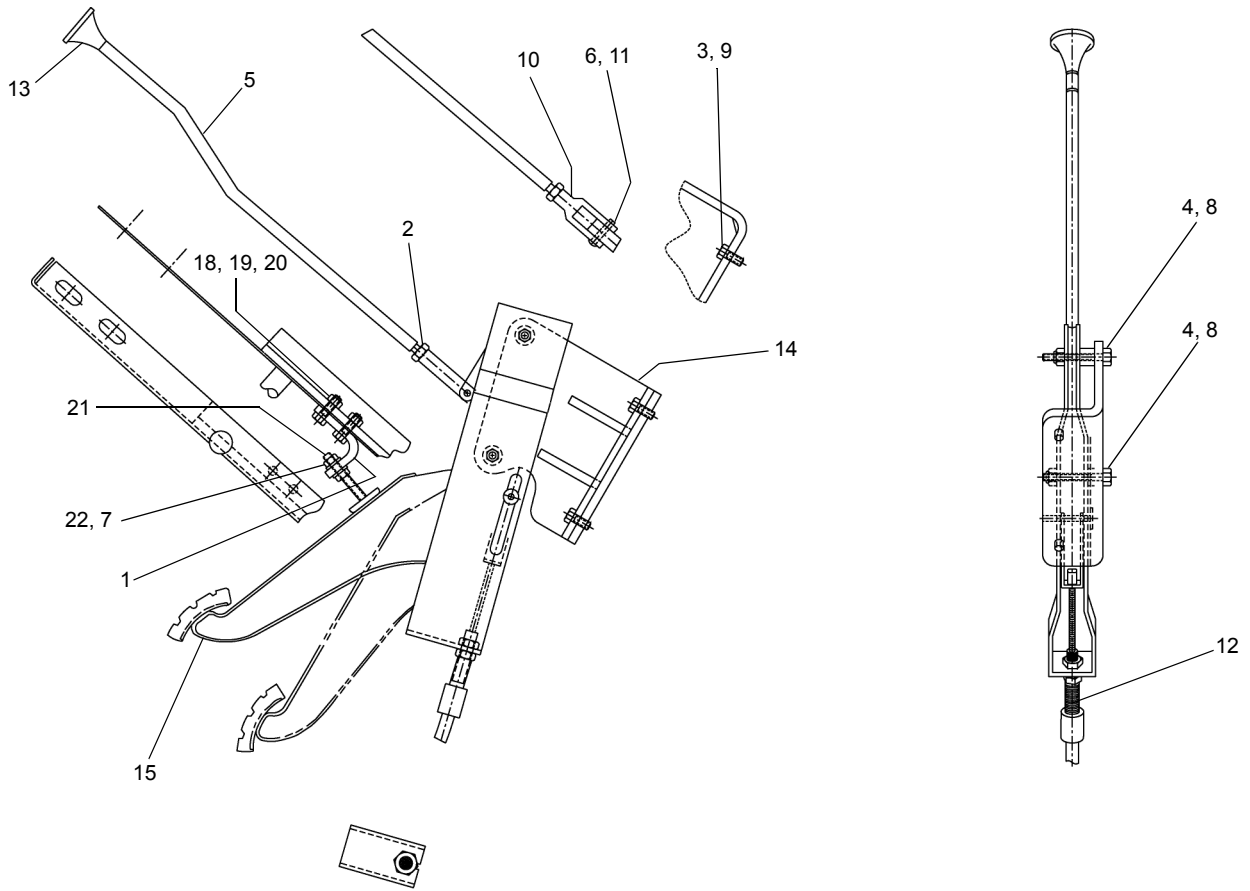
GROUP
27



REF	PART NO	DESCRIPTION	QTY
	216357	Door Assembly, Upper	
1	216445	Trim Seal	4 ft
2	216430	Foam, Door	1
3	216390	Trim Seal	3 ft
4	216388	Seal	2 ft
5	216432	Cover, Lower Latch Box	1
	216433	Insert, 10-32	6
	216434	Screw, 10-32 x 1/2"	6
6	216431	Cover, Upper Latch Box	1
	216433	Insert, 10-32	4
	216434	Screw, 10-32 x 1/2"	4
7	215603	Grab Handle	1
	215215	Screw, 1/4-20 x 3/4"	2
8	216429	Window, Sliding - Door	1
	215609	Windshield Seal, Large	12 ft
9	216435	Latch, Rotary Paddle	Ref
10	216428	Door Weldment	1
11	215088	DBLRTR Hold Open	1
	215215	Screw, 1/4-20 x 3/4"	4
12	216442	Spring, Extension	2
13	216443	Rod, LH	1
14	216435	Latch, Rotary Paddle	1
15	216436	Link, Pin & Clip	4
	216437	Shackle	4
	215086	Hexnut, 1/4-20	4
16	216444	Rod, RH	1
17	216438	Screw, Shoulder 3/8 Dia x 3/8"	1
	216439	Washer, 3/8" Brass	2
18	216441	Shackle Mount, LH/RH	2
	216447	Locknut, 1/4-20, Nyl	2
19	216446	Knob, Handle	1
20	216440	Plate, Pivot w/ Handle	1



WHEN ORDERING PARTS, SPECIFY MODEL NUMBER, SERIAL NUMBER AND DESCRIPTION OF PARTS REQUIRED



SEE PAGE 28.4

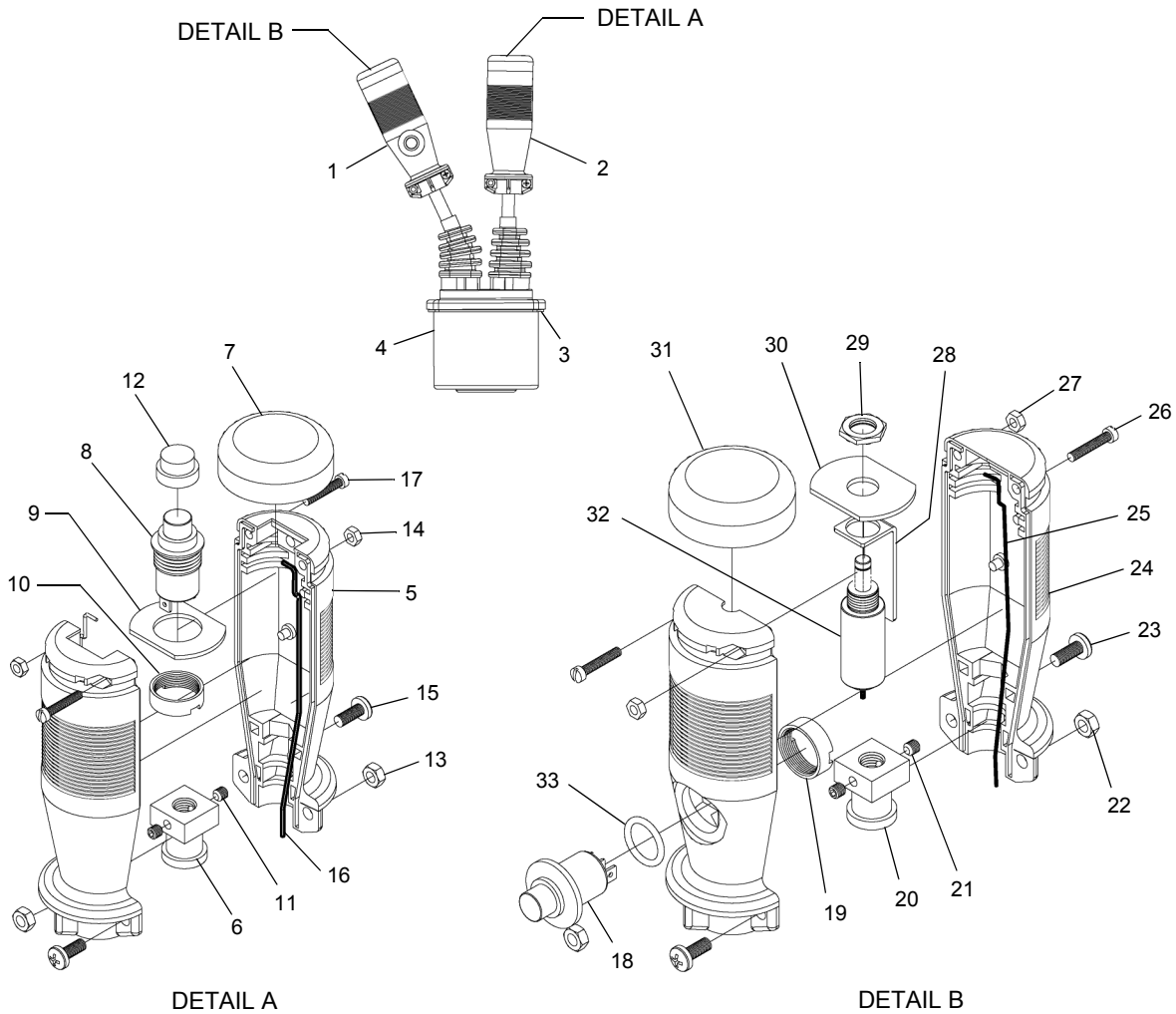
WHEN ORDERING PARTS, SPECIFY MODEL NUMBER, SERIAL NUMBER AND DESCRIPTION OF PARTS REQUIRED



SWING BRAKE CONTROL

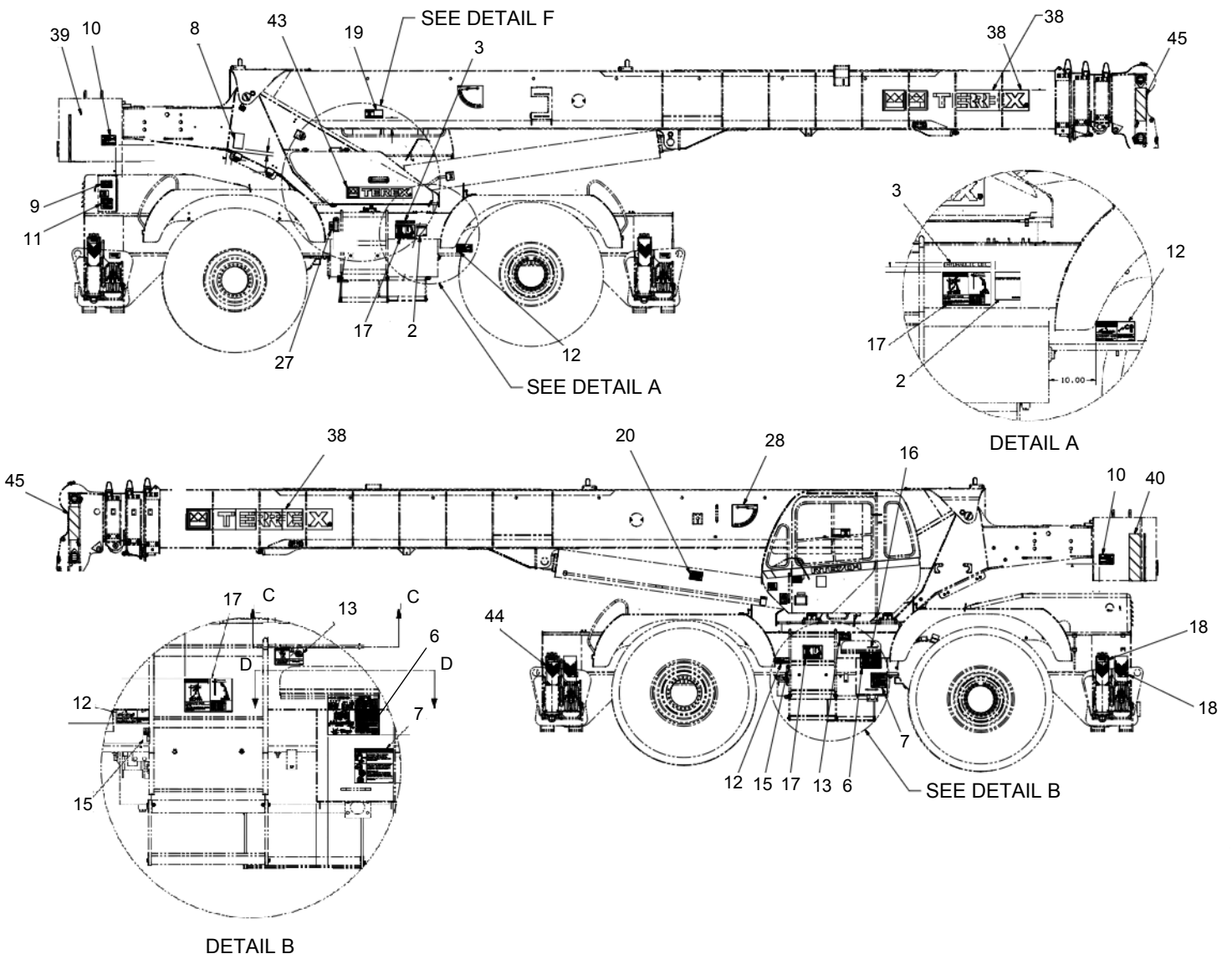
DATE: Revised 10-2010
 MODEL: RT700 & RT700-1
 PAGE 28.3

GROUP
28



REF	PART NO.	DESCRIPTION	QTY	REF	PART NO.	DESCRIPTION	QTY
719 0923 (Rev 00) <i>Left Arm Assembly - Single Axis</i>							
1	220652	Handle ASSY	1	220653	<i>Handle ASSY</i>		
2	220653	Handle ASSY	1				
3	220635	Can Gasket	1	18	220665	Push Button	1
4	220654	Can	1	19	220667	Push Button Nut	1
	220652	<i>Handle ASSY</i>		20	220655	Coupling	1
5	220660	Handle	2	21	220656	Set Screw	2
6	220655	Coupling	1	22	220658	Nut	2
7	220663	Boot	1	23	220659	Screw	2
8	220665	Push Button	1	24	220668	Handle Set	2
9	220666	Disc Top Push Button	1	25	220657	Gasket	2
10	220667	Push Button Nut	1	26	220662	Screw	2
11	220656	Set Screws	2	27	220661	Nut	2
12	220664	P.B. Knob	1	28	220669	Thumper Bracket	1
13	220658	Nut	2	29	220670	Nut	1
14	220661	Nut	2	30	220671	Plate	1
15	220659	Screw	2	31	220663	Boot	1
16	220657	Gasket	2	32	219978	Soleniod Assembly	1
17	220662	Screw	2	33	220672	"O" Ring	2

WHEN ORDERING PARTS, SPECIFY MODEL NUMBER, SERIAL NUMBER AND DESCRIPTION OF PARTS REQUIRED



SEE PAGE 30.7

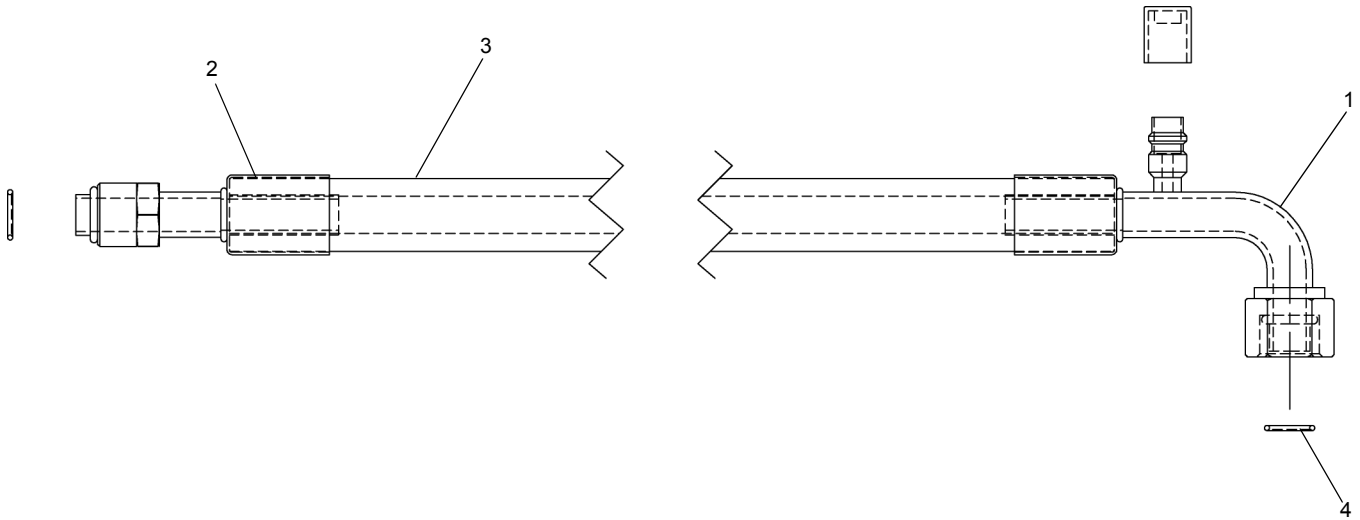
WHEN ORDERING PARTS, SPECIFY MODEL NUMBER, SERIAL NUMBER AND DESCRIPTION OF PARTS REQUIRED



MARKING DECALS

DATE: Released 09-2011
 MODEL: RT700-1
 PAGE 30.5

GROUP
30



REF	PART NO	DESCRIPTION	QTY
	219830 (Rev 00)	Hose ASSY. EVAP. COMP.	
1	222332	FTG, AC FOR #10 90-3 (SB1323-3).....	1
2	222333	FTG, AC MOR #10 STR (SB1403).....	1
3	222334	Hose, REFRIG #10	1
4	220107	O-Ring #10 R-12/R134A	2

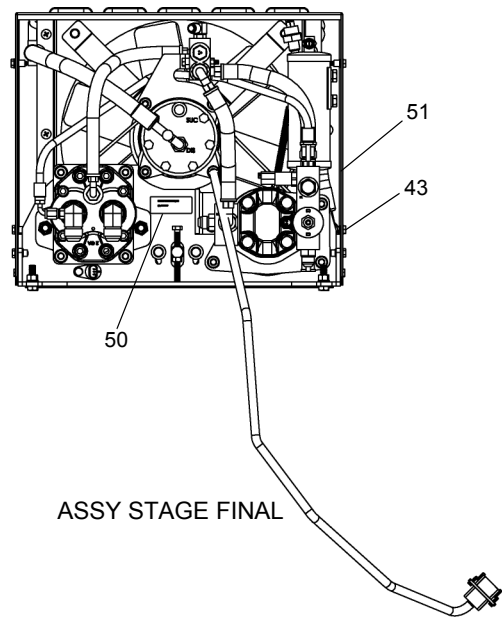
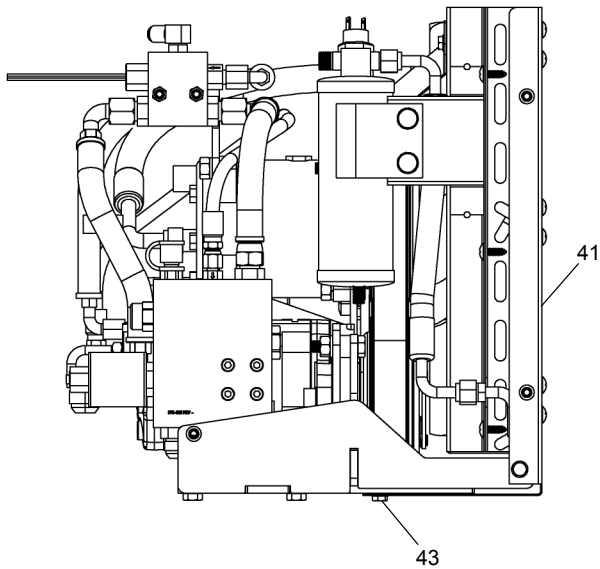
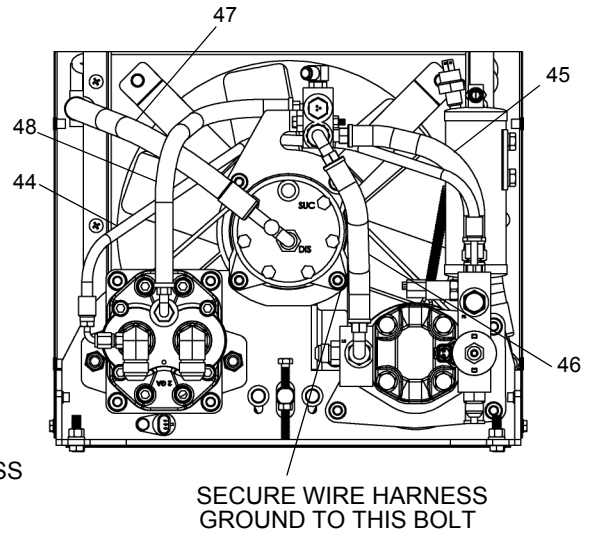
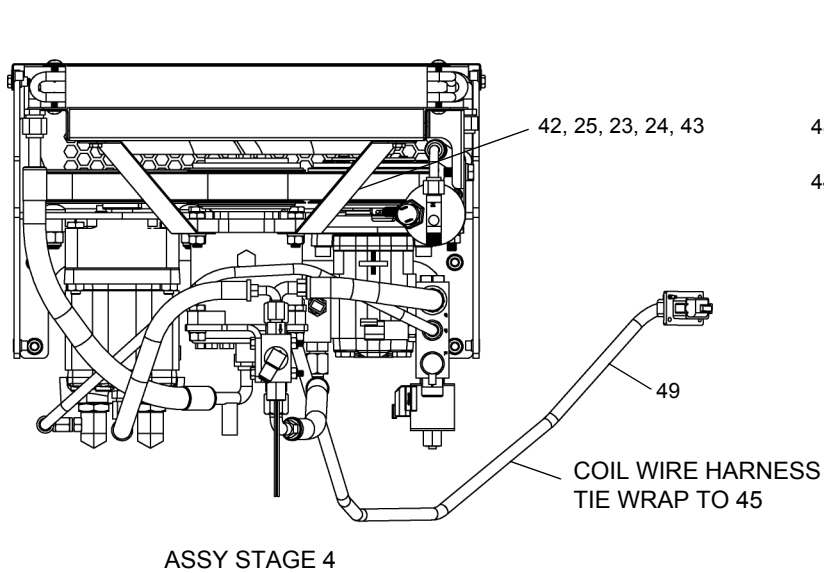
WHEN ORDERING PARTS, SPECIFY MODEL NUMBER, SERIAL NUMBER AND DESCRIPTION OF PARTS REQUIRED



HOSE ASSY. EVAP. COMP.
(OPTION 1)

DATE: Released 03-2011
 MODEL: RT700 & RT700-1
 PAGE 31.7

GROUP
31



SEE PAGE 31.18

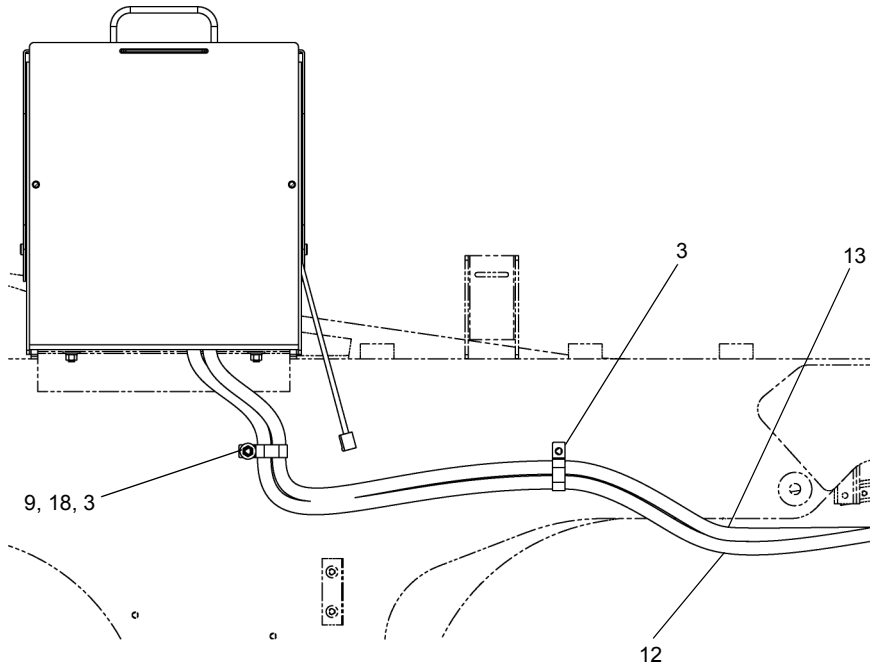
WHEN ORDERING PARTS, SPECIFY MODEL NUMBER, SERIAL NUMBER AND DESCRIPTION OF PARTS REQUIRED

 **TEREX**
P/N 12261-264

HYDRAULIC DRIVE UNIT
(OPTION 4)

DATE: Released 03-2011
MODEL: RT700 & RT700-1
PAGE 31.17

GROUP
31



SECTION B - B

SEE PAGE 33.6

<u>REF</u>	<u>PART NO.</u>	<u>DESCRIPTION</u>	<u>QTY</u>
	T112487 (Rev B)	Battery Assy	
1*	12182-12	Trim Lock.....	1
2	1223-824	Battery	2
3	200B2007-67	Clamp, Double, MED, 0.88 ID	2
4	707-4375	Rod	2
5	MK212541	Angle	1
6	N04-312C000-25	Nut, HEX 0.3125-18, ST Z GR5	4
7	N04-375C000-25	Nut, HEX 0.375-16, ST Z GR5	2
8	NYL-312C000-25	Nut, HEX NYL -INS 0.312-18, ST Z G5.....	2
9	NYL-375C000-25	Nut, HEX NYL -INS 0.375-16, ST Z G5.....	1
10	SHF-375CA00-25	SCR, HHCS FT 0.375-16X1.00, ST Z G5	2
11	T109957	Battery Box ASSY	1
12	T112280	Battery Cable	1
13	T112281	Battery Cable	1
14	W07-312X000-20	WSH, LCK, MED SPLT 0.3125, ST Z	2
15	W07-375X000-20	WSH, LCK, MED SPLT 0.375, ST Z	2
16	WAW-37WX000-20	WSH, FL TYPA-W1D 0.375, ST Z.....	4
17	WFD-312X875-E8	WSH,FNDR 0.312X0.875, SSS18-8	2
18	WMF-012X000-20	WSH, FLAT M12 DIN125, ST Z	1

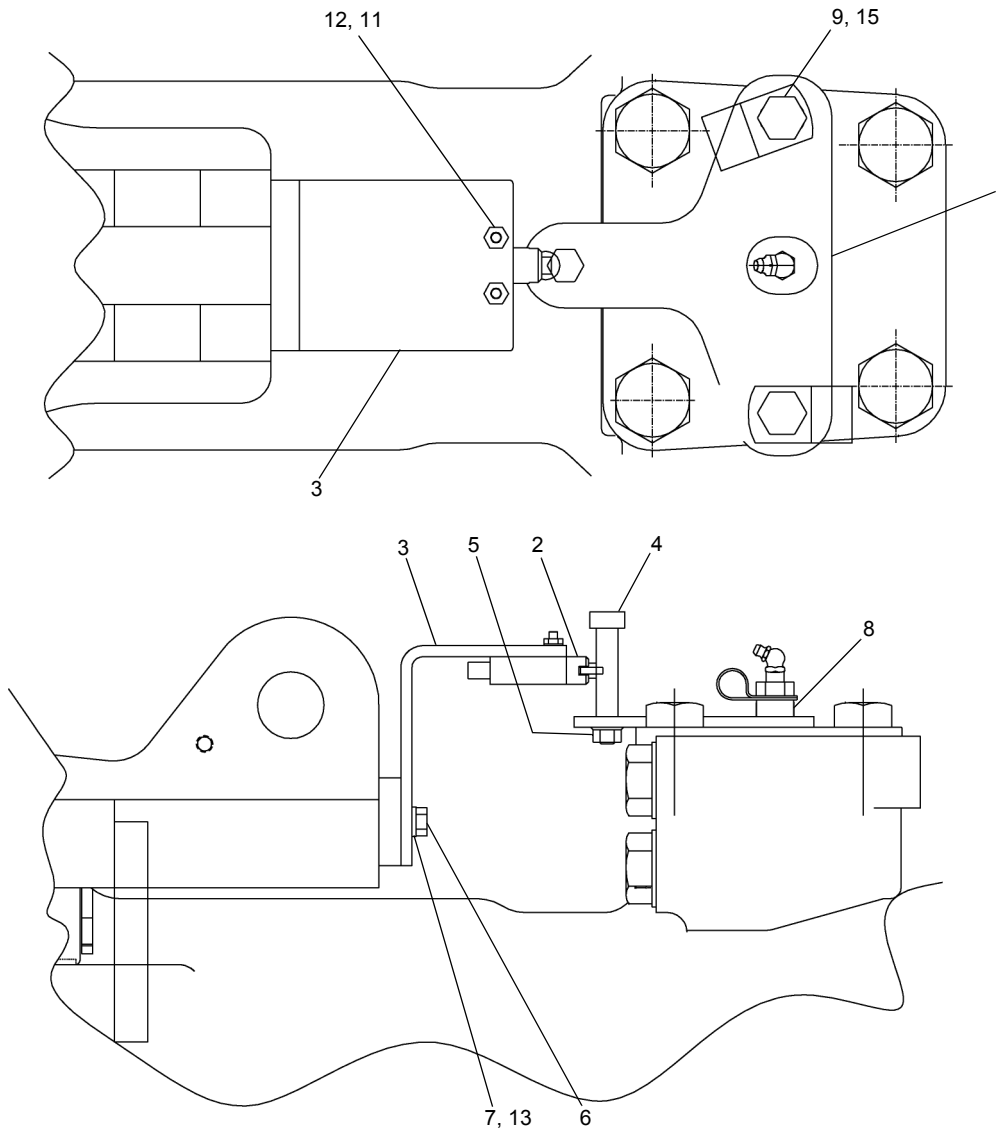
WHEN ORDERING PARTS, SPECIFY MODEL NUMBER, SERIAL NUMBER AND DESCRIPTION OF PARTS REQUIRED



BATTERY ASSEMBLY

DATE: Revised 09-2011
 MODEL: RT700-1 & Non-North America
 PAGE 33.7

GROUP
33



REF	PART NO.	DESCRIPTION	QTY
720A0370 (Rev C) Axle Centering Switch			
1	720 0284	Plate.....	1
2	442 2201	Switch MICO ACSU.....	1
3	720 0285	Plate.....	1
4	20Q1D41	Screw.....	1
5	20Z1776D1	Nut, Flange.....	1
6	1200-57	HHCS 3/8 X 3/4.....	2
7	1210-20	Washer, Lock.....	2
8	200B2007-104	Spacer.....	2
9	1200-100	HHCS 1/2 X 1-1/2.....	2
10*	200B2007-22	Clamp.....	2
11	1202-7	RHMS.....	2
12	1230-6	Nut.....	2
13	1209-4	Washer.....	2
14*	200B2007-4	Clamp.....	1
15	1210-26	Washer.....	2

* ITEMS 10 & 14 ARE NOT SHOWN IN ILLUSTRATION

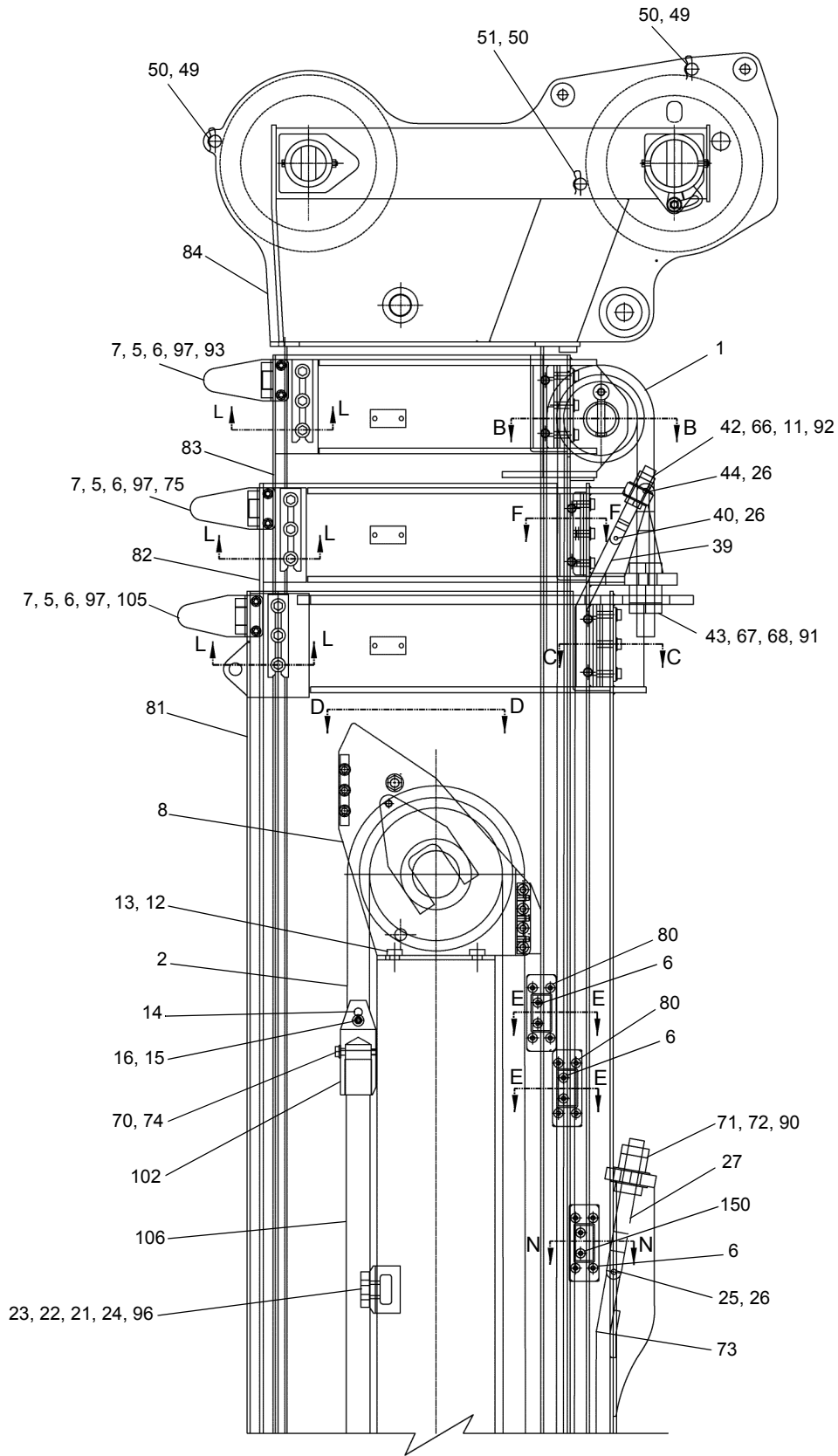
WHEN ORDERING PARTS, SPECIFY MODEL NUMBER, SERIAL NUMBER AND DESCRIPTION OF PARTS REQUIRED



AXLE CENTERING LIGHT ASSY

DATE: Revised 10-2010
 MODEL: RT700
 PAGE 33.17

GROUP
33



SEE PAGE 39.6 & 39.7

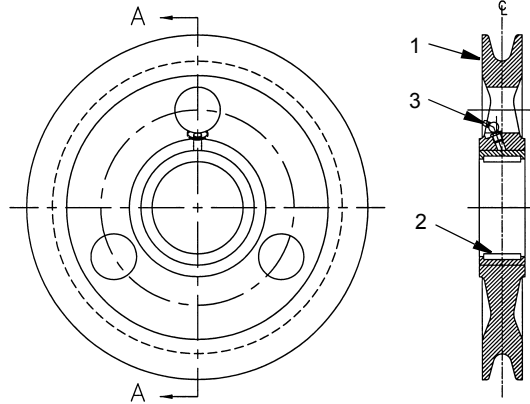
WHEN ORDERING PARTS, SPECIFY MODEL NUMBER, SERIAL NUMBER AND DESCRIPTION OF PARTS REQUIRED



126' BOOM

DATE: Revised 10-2010
MODEL: RT700 & RT700-1
PAGE 39.1

GROUP
39



SECTION A-A

REF	PART NO.	DESCRIPTION	QTY
	718A0226 (Rev 00)	Sheave Assembly, Nylon - 3/4"	
1	718 0225	Nylon Sheave Assembly	1
2	1217-360	Bearing.....	1
3	1213-3	Fitting, Grease, 45 Deg.....	1

WHEN ORDERING PARTS, SPECIFY MODEL NUMBER, SERIAL NUMBER AND DESCRIPTION OF PARTS REQUIRED



**126' BOOM
SHEAVE**

DATE: Revised 10-2010
 MODEL:RT700 & RT700-1
 PAGE 39.11


**GROUP
39**

SEE PAGE 40.2

<u>REF.</u>	<u>PART NO.</u>	<u>DESCRIPTION</u>	<u>QTY</u>	<u>REF.</u>	<u>PART NO.</u>	<u>DESCRIPTION</u>	<u>QTY</u>
	720 0408	<i>Hydraulic Winch Assembly (Braden)</i>					
1	215418	Brake Cylinder.....	1	29	215443	Seal-Oil	1
2	215419	Seal	1	30	215444	Retaining Ring, External	1
3	215420	Pressure Plate Stamping.....	1	31	215445	Thrust Washer.....	1
4	215421	Piston Backup Ring	1	32*	215446	Motor Support	1
5	215422	Die Spring.....	12	33*	215447	Snap Ring	1
6	215423	850170 Disc-Friction	7	34	215448	Output Sun Gear.....	1
7	215424	Brake Disk	8	35	215449	Primary Sun Gear	1
8	215459	O-Ring.....	1	36	215450	Spacer.....	1
9	217070	Sprag.....	1	37	215451	Primary Spacer	1
10	215425	Primary Planet Carrier.....	1	38	215474	Spacer, Output	1
11	215426	Primary Planet Gear.....	3	39	215452	Capscrew	8
12	215427	Primary Planet Gear Shaft	3	40	215453	Capscrew	8
13	215428	Roller Bearing	3	41	215446	Motor Support	1
14	215429	Bearing Race	6	42	216770	Tie Bar.....	1
15	215430	Spirol Pin	3	43	215455	Thrust Washer.....	1
16	215431	Output Planet Carrier	1	44	215456	Sight Gauge	1
17	215432	Output Planet Gear	3	45	215457	16496-8 Plug, O-Ring Flush	1
18	215433	Output Planet Gear Shaft.....	3	46	215458	Vent Plug.....	1
19	215434	Roller Bearing	6	47	215459	O-Ring.....	1
20	215435	Bearing Spacer.....	3	48	215460	Back-Up Ring.....	1
21	215436	Thrust Washer.....	6	49	215470	Lockwasher.....	16
22	215454	Capscrew	8	50	216767	Sideplate, Motor End	1
23	215437	Bearing Support	1	51	216768	Sideplate, Support End	1
24	217144	Cable Drum	1	52	218589	Lockwasher.....	16
25	215439	Cable Drum Closure.....	1		218590	Capscrew	16
26	215440	Ball Bearing.....	2	53	216529	Cable Wedge	1
27	215441	Oil Seal.....	1	54	216772	Base.....	1
28	215442	O-Ring.....	1				

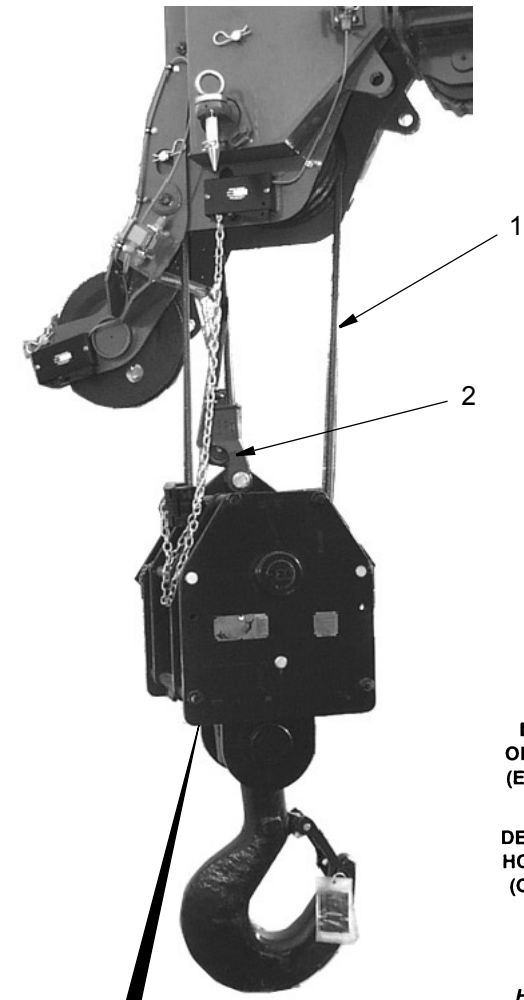
* ITEMS 32 & 33 ARE NOT SHOWN IN ILLUSTRATION

WHEN ORDERING PARTS, SPECIFY MODEL NUMBER, SERIAL NUMBER AND DESCRIPTION OF PARTS REQUIRED

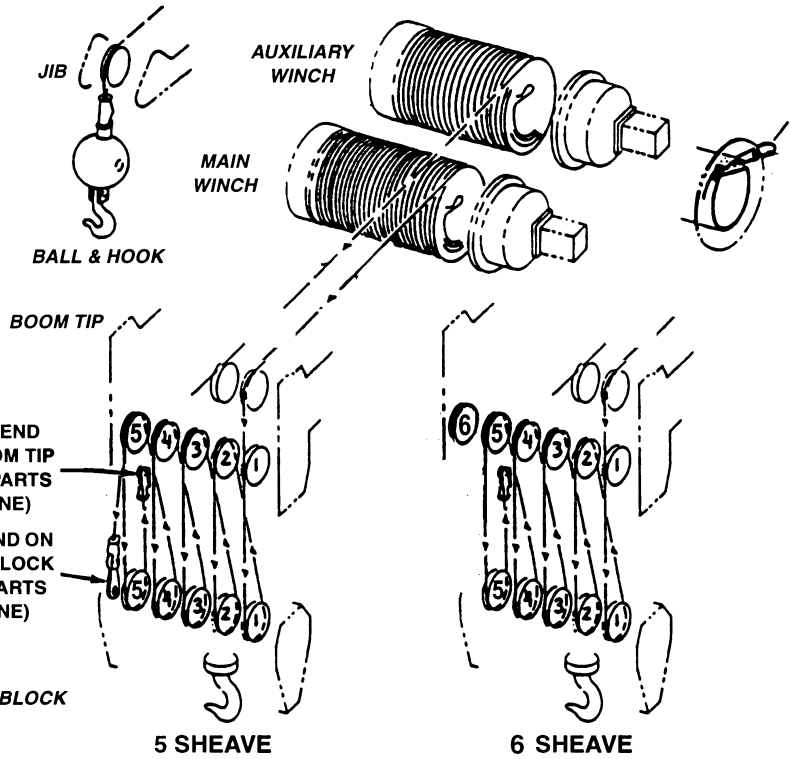
 TEREX P/N 12261-264	WINCH ASSEMBLY	DATE: Revised 10-2010	GROUP 40
		MODEL:RT700 & RT700-1	
		PAGE 40.3	



UNDER NO CONDITION CAN ANY OTHER SIZE, TYPE, OR LENGTH OF WIRE ROPE BE USED ON THIS EQUIPMENT SINCE IT CONSTITUTES A SAFETY HAZARD.



**HOOK BLOCKS
Group 44**



- WIRE ROPE -
 6X19CLASS, I.P.S., I.W.R.C. REGULAR LAY PREFORMED
 3/4" - 25.6 Tons Minimum Breaking Strength

- WIRE ROPE -
OPTIONAL
 BRIDON - DYFORM 34LR 1960 ROTATION RESISTANT COMPACTED STRAND
 3/4" - 34.51 Tons Minimum Breaking Strength

REF	PART NO	DESCRIPTION	QTY
	718A0519	Cable, 3/4 x 600' Rotation Resistant (Item 1-2)	
	718A0518	Cable, 3/4 x 600' Regular Lay (Item 1-3)	
1	12517-600	Rope, Wire	1
2	1234-44	Wedge & Socket Assembly, 3/4"	1
3	12518-600	Rope, Wire	1

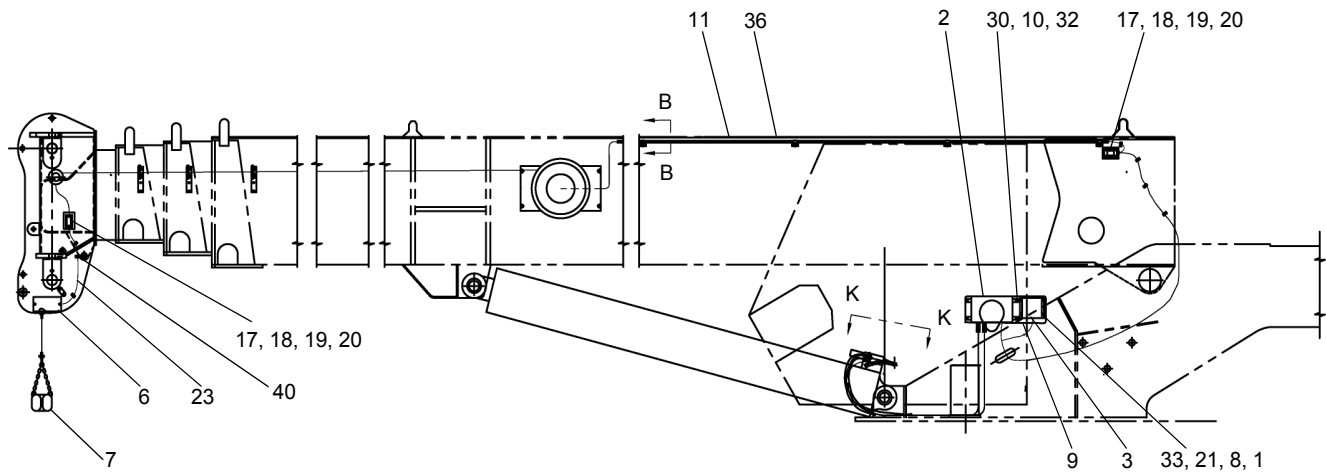
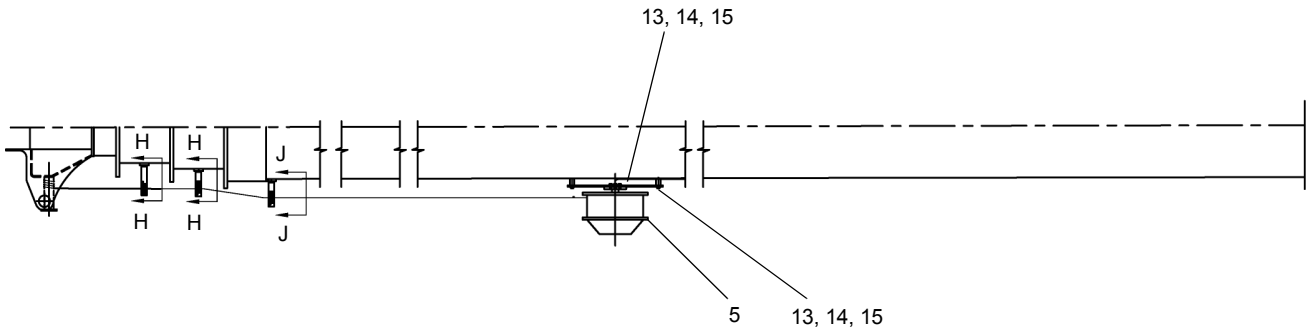
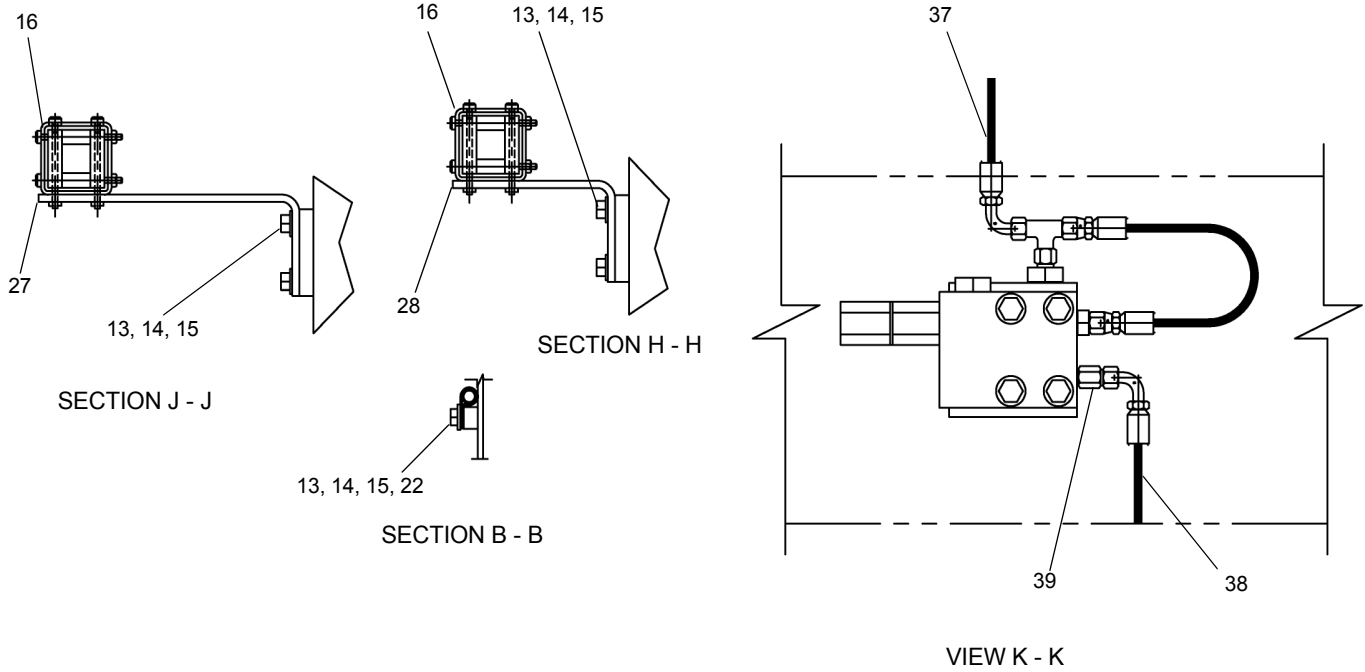
WHEN ORDERING PARTS, SPECIFY MODEL NUMBER, SERIAL NUMBER AND DESCRIPTION OF PARTS REQUIRED



WIRE ROPE & REEVING

DATE: Revised 10-2010
 MODEL:RT700 & RT700-1
 PAGE 45.1

**GROUP
45**



SEE PAGE 52.6

WHEN ORDERING PARTS, SPECIFY MODEL NUMBER, SERIAL NUMBER AND DESCRIPTION OF PARTS REQUIRED



GREER RCI 510
RCI ASSEMBLY (Option 1)

DATE: Released 10-2011
MODEL: RT700 & RT700-1
PAGE 52.5

GROUP
52

CLICK HERE TO **DOWNLOAD** THE COMPLETE MANUAL

- Thank you very much for reading the preview of the manual.
- You can download the complete manual from: www.heydownloads.com by clicking the link below



- Please note: If there is no response to CLICKING the link, please download this PDF first and then click on it.

CLICK HERE TO **DOWNLOAD** THE COMPLETE MANUAL