

**STD10
STD15**

TCM TRACTOR SHOVEL

OPERATOR'S MANUAL

Book No. S-611CE

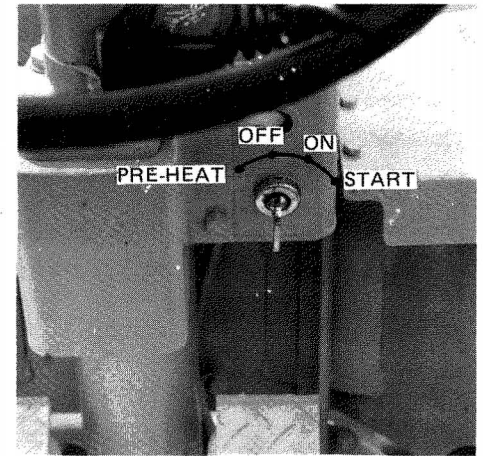
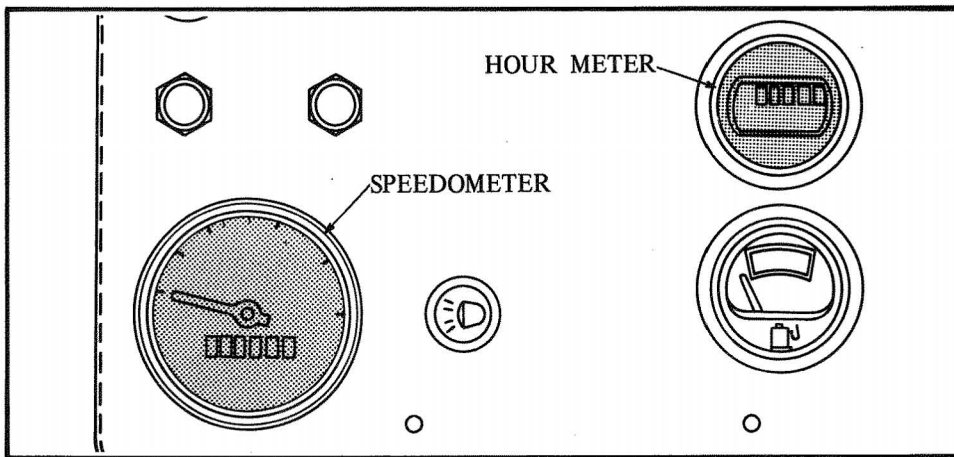
CLICK HERE TO **DOWNLOAD** THE COMPLETE MANUAL

- Thank you very much for reading the preview of the manual.
- You can download the complete manual from: www.heydownloads.com by clicking the link below



- Please note: If there is no response to CLICKING the link, please download this PDF first and then click on it.

CLICK HERE TO **DOWNLOAD** THE COMPLETE MANUAL



SPEEDOMETER

This meter indicates traveling speed (km/h) and distance traveled. The right-end column of the distance indicator shows a figure in 100 m unit and the next column shows in kilometer unit.

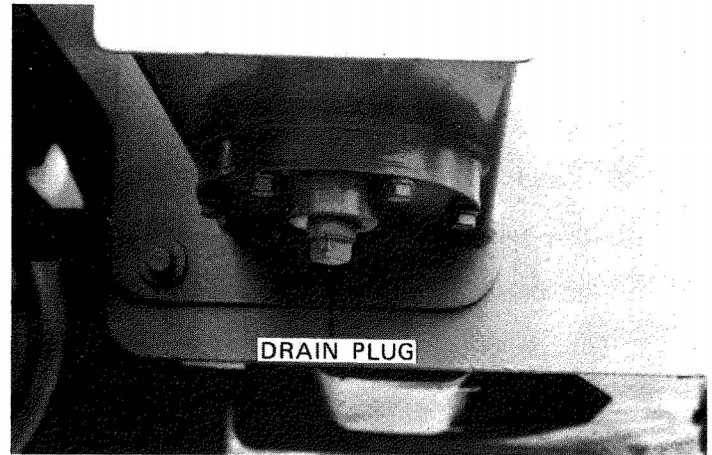
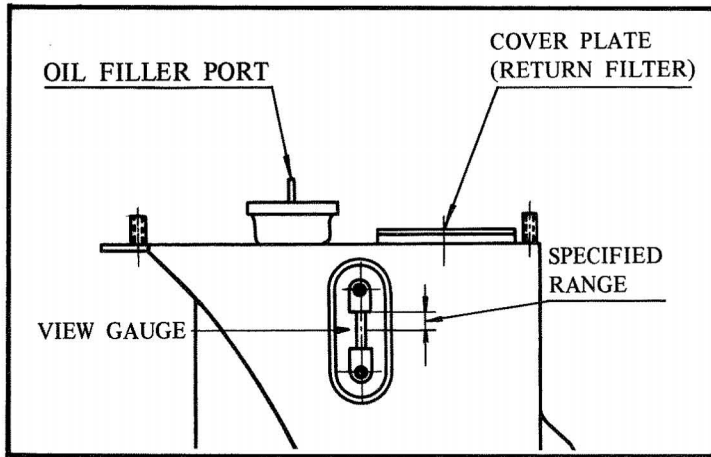
HOUR METER

The hour meter registers total time the machine are operated. The hours recorded are used for planned maintenance. The hour meter is the electric type and is put in operation with the starter switch in "ON" position. The right-end column indicates figures in 1/10 hour unit and the rests show the hours the machine is operated.

STARTER SWITCH

OFF	Key Insertion, Draw-out positon: Engine is "OFF"
ON	Electric circuit is closed.
START	Engine starts up. Switch is automatically returned into "ON" position when removing hand from key.
PRE-HEAR	Engine is pre-heated. Switch is automatically returned into "ON" position when removing hand from key.

Do not run the starter for more than 10 seconds if the engine does not start.



HYDRAULIC OIL TANK

Check and service the hydraulic oil tank as follows:

Checking Oil Level

Check the view gauge at the side of the tank. The level in the gauge should be between the middle point and the upper mark. If unsatisfactory, add oil to bring level to the specified range. **Since the hydraulic oil tank is of the pressure type, the cap should be slowly and carefully opened. The oil level check should be made with the bucket on the ground and engine shut off.**

Changing Oil

Drain oil through the drain plug, and remove the return filter and replace with new one. Add new oil through the oil filler port to the specified level. After oil change is completed, make sure no oil leak presents.

Changing Filter

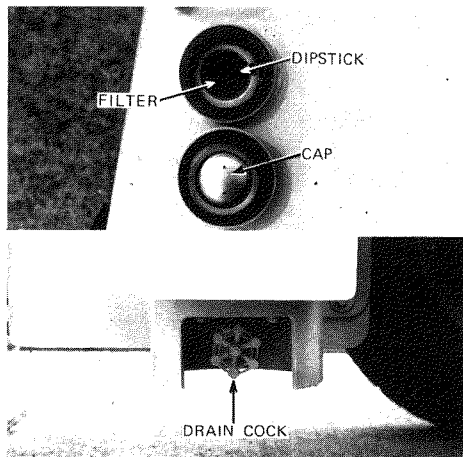
Remove the cover plate and replace the return filter with new one.

Draining Foreign Matter

Drain water and foreign matter accumulated in the tank through the drain plug.

Air Bleeding

Whenever oil change, tank cleaning or filter replacement is made, be sure to vent air out of the system by running the engine at low rpm for a while. By doing so, the take side piping is filled with oil. As oil level lowers, check level and add oil if necessary.



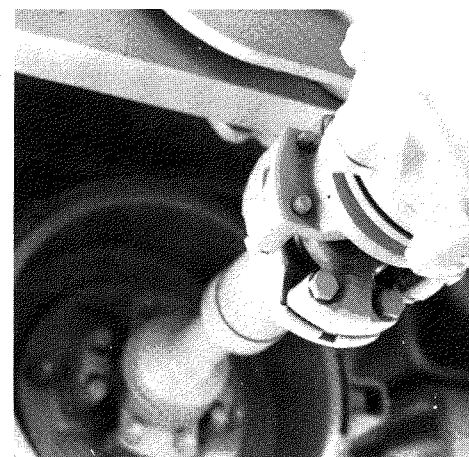
FUEL RESERVOIR

Check fuel level and discharge water or foreign matter accumulated in the reservoir. To check level, open the cap and use the dipstick. In addition, remove the filter located at the filler port and clean.



BAR FIELD ISOCRONOUS BALL JOINT

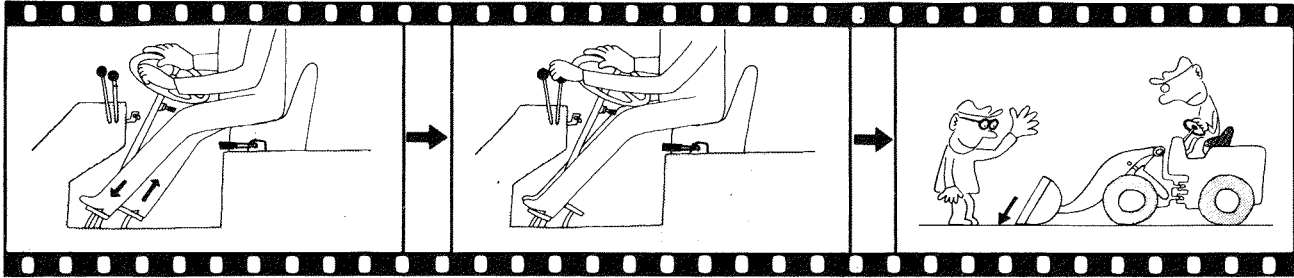
Check for damage of the boots and grease leaks. Replace grease at periodic intervals.



PROPELLER SHAFT

Check the propeller shaft for loose connections, deflection and loose splined parts. Check also propeller shaft lock bolts for looseness.

STOPPING THE MACHINE

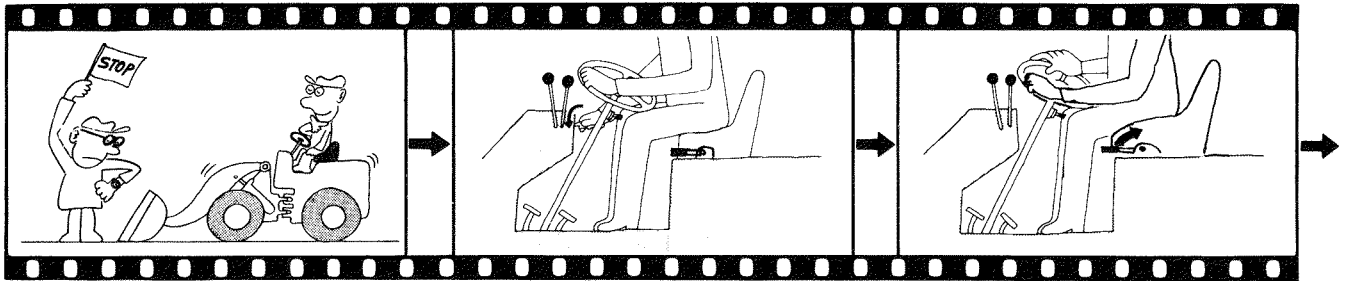


Release the accelerator pedal and press the brake pedal.

When the machine comes to a complete stop, place directional and speed control levers in neutral.

Place bucket on the ground.

PARKING



Run the engine at low rpm for about 5 minutes.

Pull the engine stop lever. Place starter switch in "OFF" position to stop the engine.

Pull up parking brake lever.

TRANSPORTING PROCEDURE

If your Tractor Shovel is to be hauled by truck, follow proper loading procedures. The work should be performed on a level surface. Make sure the ramp has proper length, width, and capacities and is secured at a proper grade. When making use of the fill-up ground, check that its width, capacity and grade is proper.

When the Tractor Shovel is towed by another machine, the two propeller shafts transmitting power from the transmission should be removed from the Tractor Shovel.

Only trained and authorized operators shall be permitted to operate the Tractor Shovel.

For safety sake, do not perform the following practices.

- Avoid traveling at a high-speed for a long time.
- Avoid sudden stops, starts or turns.
- Avoid high-speed turns and zigzag travels.

Don't keep starter engaged for longer than 10 seconds at a time and allow a minute or so interval between trials.

If any warning light comes on, move the machine to a safe place and troubleshoot immediately.

CLICK HERE TO **DOWNLOAD** THE COMPLETE MANUAL

- Thank you very much for reading the preview of the manual.
- You can download the complete manual from: www.heydownloads.com by clicking the link below



- Please note: If there is no response to CLICKING the link, please download this PDF first and then click on it.

CLICK HERE TO **DOWNLOAD** THE COMPLETE MANUAL