

ORIGINAL INSTRUCTIONS - according to Directive 2006/42/EC, Annex I 1.7.4.1

OPERATOR'S MANUAL

BB9050

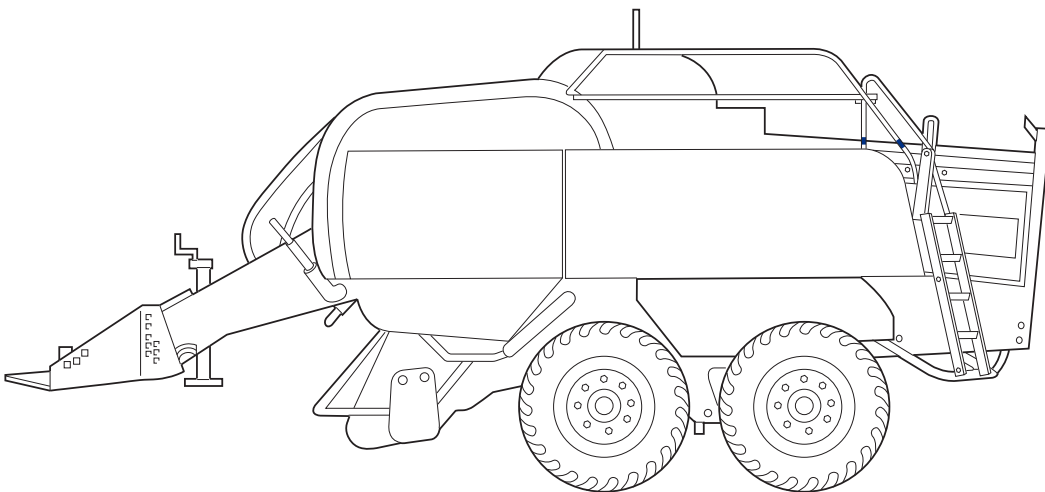
BB9060

BB9070

BB9080

Big Baler

PIN 1234 and above



Part number 12345678

1st edition English

July 2012

Replaces part number 12345678



CLICK HERE TO **DOWNLOAD** THE COMPLETE MANUAL

- Thank you very much for reading the preview of the manual.
- You can download the complete manual from: www.heydownloads.com by clicking the link below



- Please note: If there is no response to CLICKING the link, please download this PDF first and then click on it.

CLICK HERE TO **DOWNLOAD** THE COMPLETE MANUAL

Intended use

This machine has been built with the most advanced technology and in accordance with recognized safety rules. The machine must be used according to its intended use only, respecting the safety, precautions and operating instructions. Any functional disorders, especially those affecting the safety of the machine, should therefore be rectified immediately.

▲ WARNING

Avoid injury!

Using the machine for purposes other than or beyond the intended use is not allowed; for example:

- for the transportation of persons,
- as a working platform,
- for pulling attached loads,
- for pulling or transporting loads without the intended working equipment.

Failure to comply could result in death or serious injury.

W1142B

The manufacturer/supplier cannot be held responsible for any damage resulting from unintended use. The risk involved in such misuse lies entirely with the user.

NOTE: For clarity, some figures in this manual show the machine with protection panels or covers removed. Never operate the machine with any protection panels or covers removed.

NOTICE: It is absolutely forbidden to tamper with and/or change the setting of any of the hydraulic system valves to avoid damaging machine components, with a consequent risk of personal safety.

The current operator's manual is the user's guide for correct run-in, use and maintenance of the machine. Carefully read this operator's manual and store it in the cab for quick reference. Instructions concerning safety, operation and maintenance have been developed to permit safe service and operation of this machine.

In the event of queries or suggestions relevant to your machine do not hesitate to address to your NEW HOLLAND CONSTRUCTION Dealer. NEW HOLLAND CONSTRUCTION Dealers have qualified and trained personnel at disposal along with original spares, means and equipment suitable to carry out all necessary maintenance.

Any modifications or adaptations which are not approved by the manufacturer may invalidate the machine's original conformity with safety requirements.

NOTICE: The engine and fuel system on your machine are designed and built to government emissions standards. Tampering by NEW HOLLAND CONSTRUCTION Dealers/customers/operators/users are strictly prohibited by law. Failure to comply with this prohibition could result in government fines, rework charges, invalid warranty, legal action and possible confiscation of the machine until rework to original condition is completed. Engine service and/or repairs must be carried out by a certified technician only.

Before entrusting this machine to an operator, make sure that:

- The operator is qualified to operate the machine correctly and safely.
- The operator has read and completely understood the instructions given in this manual.

Consult your NEW HOLLAND CONSTRUCTION Dealer to obtain any other technical manuals or manuals in other languages.

Your NEW HOLLAND CONSTRUCTION Dealer is at your disposal for any further information you may need.

Spare parts

The "non-genuine" spare parts have not been checked and authorized by the manufacturer. The assembly and/or use of such products may have negative effects on the machine design features and could impair its operation safety. The manufacturer is not liable for any damage caused by "non-genuine" spare parts or accessories.

Warranty

The warranty applicable for each model Backhoe Loader manufactured by Case New Holland Construction Equipment (India) Pvt. Ltd. (the company) will be as given under:

Install guards and shields after you service the machine.

Close all access doors and install all panels after servicing the machine.

Do not attempt to clean, lubricate, clear obstructions, or make adjustments to the machine while it is in motion or while the engine is running.

Always make sure that working area is clear of tools, parts, other persons and pets before you start operating the machine.

Unsupported hydraulic cylinders can lose pressure and drop the equipment, causing a crushing hazard. Do not leave equipment in a raised position while parked or during service, unless the equipment is securely supported.

Jack or lift the machine only at jack or lift points indicated in this manual.

Incorrect towing procedures can cause accidents. When you tow a disabled machine follow the procedure in this manual. Use only rigid tow bars.

Stop the engine, remove the key, and relieve pressure before you connect or disconnect fluid lines.

Stop the engine and remove the key before you connect or disconnect electrical connections.

Scalding can result from incorrect removal of coolant caps. Cooling systems operate under pressure. Hot coolant can spray out if you remove a cap while the system is hot. Allow the system to cool before you remove the cap. When you remove the cap, turn it slowly to allow pressure to escape before you completely remove the cap.

Replace damaged or worn tubes, hoses, electrical wiring, etc.

The engine, transmission, exhaust components, and hydraulic lines may become hot during operation. Take care when you service such components. Allow surfaces to cool before you handle or disconnect hot components. Wear protective equipment when appropriate.

When welding, follow the instructions in the manual. Always disconnect the battery before you weld on the machine. Always wash your hands after you handle battery components.

Cleaning the machine

Do not use cold water on a hot engine. Allow engine to cool to ambient temperature before cleaning, as damage to components such as fuel pump and other equipment may occur.

When the soft trim material inside the cab becomes dirty, it should be wiped clean. Dip a cloth in a warm water/detergent solution and wring out as much of the water as possible.

The floor matting should be cleaned with a vacuum cleaner and/or a stiff brush. If necessary a damp cloth may be used to remove obstinate stains. Allow the matting to dry naturally and avoid getting water under the mat.

External plastic parts such as fenders and the roof should be cleaned using warm and a little detergent and rinsed with water.

Protect FM radio and speaker from water and dust.

NOTE: *If using a high pressure washer to clean the machine, avoid aiming the jet directly at oil fill points, breathers, seats, instruments, decals, electrical connectors and other electrical connections.*

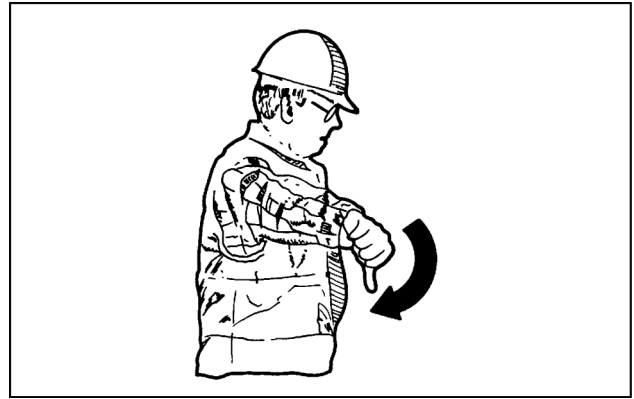
Wheels and tires

Make sure that tires are correctly inflated. Do not exceed any recommended load or pressure. Follow the instructions in the manual for proper tire inflation.

Tires are heavy. Handling tires without proper equipment could cause death or serious injury.

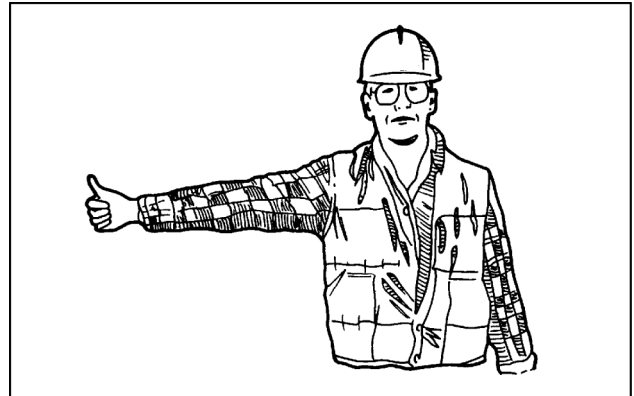
Never weld on a wheel with a tire installed. Always remove the tire completely from the wheel prior to welding.

16. Dump loader bucket.



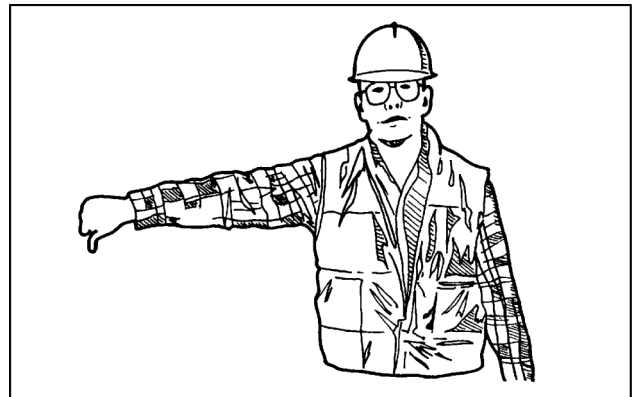
PTIL12TLB0330AA 16

17. Raise backhoe boom.



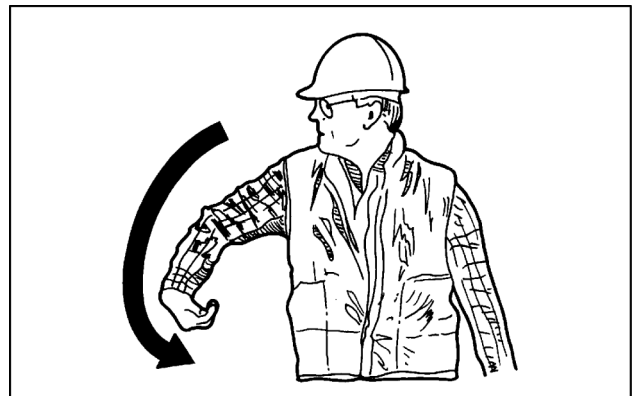
PTIL12TLB0338AA 17

18. Lower backhoe boom.



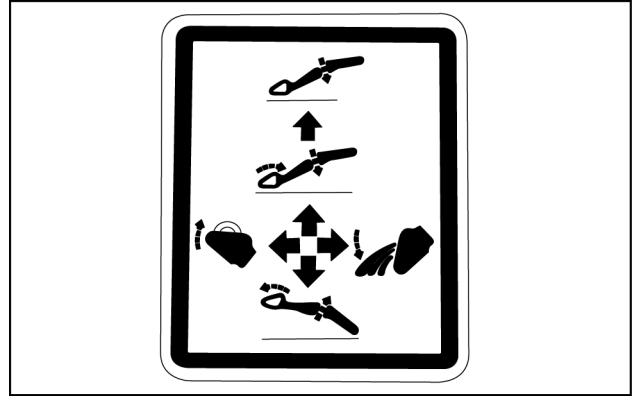
PTIL12TLB0333AA 18

19. Backhoe dipper in.

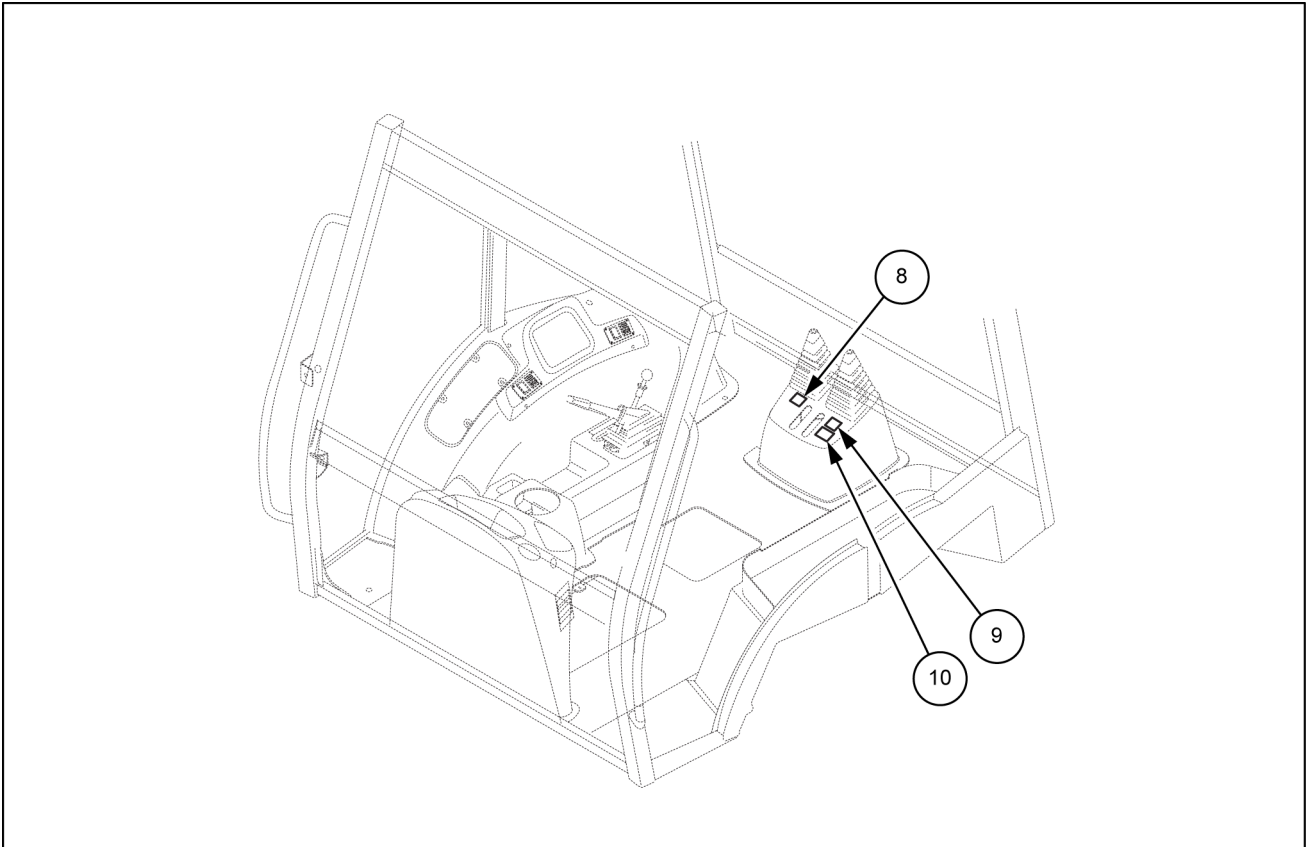


PTIL12TLB0324AA 19

7. Loader operation

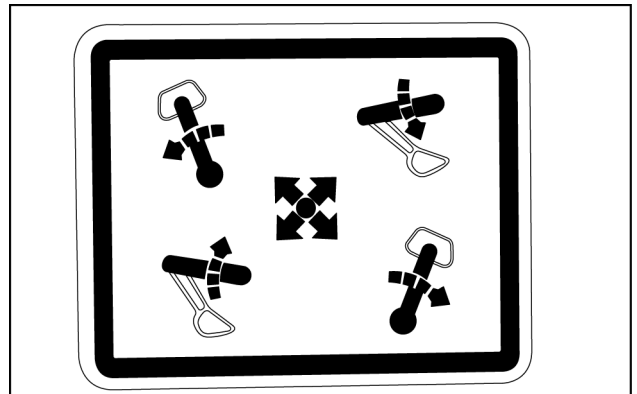


PTIL13TLB1444AA 26



PTIL12TLB0472FB 27

8. Boom control



PTIL13TLB1443AA 28

Transmission controls

Power-Shuttle

1. Gearshift lever: It is possible to select four forward and four reverse travel gears.

NOTE: For reverse, the machine should be operated in first and second gears only.

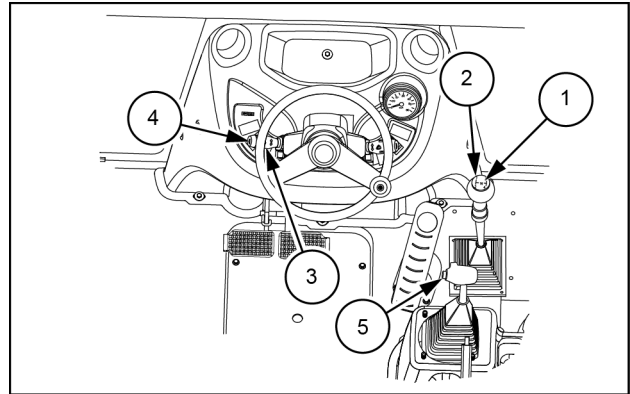
2. Transmission disconnect button (on gearshift lever): Prior to changing gear press and hold down this switch which disengages transmission drive, select the required gear with the gearshift lever and release the switch to reengage drive.
3. Direction lever: The movement of this lever from the neutral position will engage the forward or reverse travel.

NOTE: In reverse gear a reverse buzzer sounds. Also the warning lights are "ON" in the tail lamp.

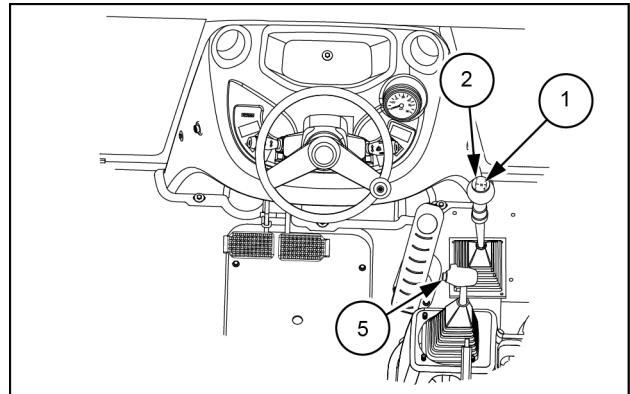
4. Horn button.
5. Transmission disconnect button (on loader attachment control lever).

A device for "transmission disconnection" is activated by pushing button (2), placed on the gearshift lever (1) or by pushing button (5), placed on the loader attachment control lever.

NOTICE: Always apply the parking brake whenever the machine is parked as the machine is free to roll even though the transmission gearshift lever may be "In Gear" and the engine is turned "OFF".



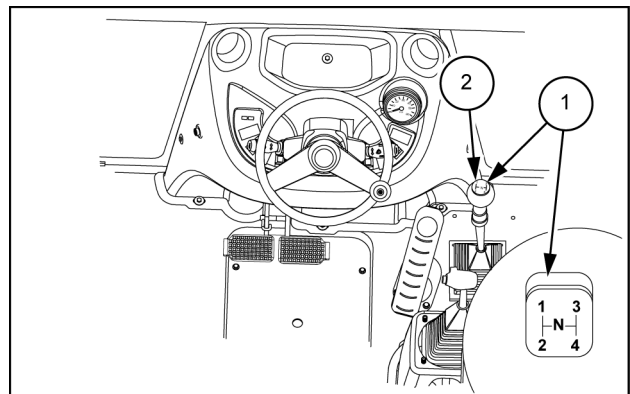
PTIL17TLB0004AB 1



PTIL17TLB0005AB 2

Gearshift lever

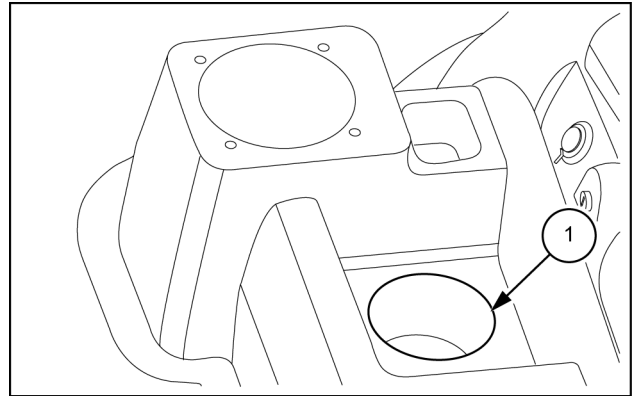
Engage the 4WD switch when the machine is neutral position (gear lever and FNR lever). The single gearshift lever (1) is used to select any of the four gear ratios. The transmission disconnect button (2) is depressed and held as the lever is shifted from one gear to another and then released to re-connect transmission drive.



PTIL17TLB0007AB 3

Storage areas

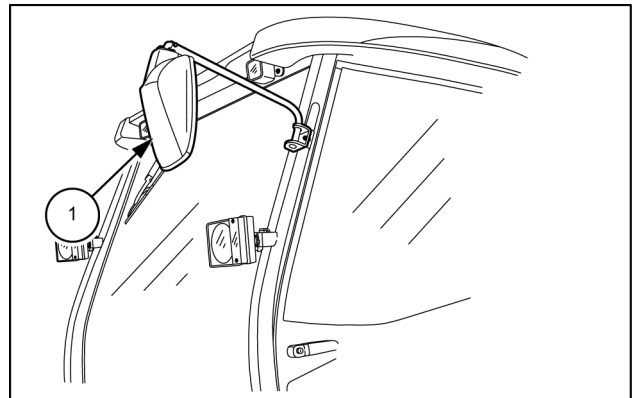
Located at the side instrument panels, these areas **(1)** can be used for cups, bottles etc.



PTIL12TLB0081AB 4

Rear view mirrors

Make sure the right-hand and left-hand rear view mirrors **(1)** are correctly adjusted before undertaking any travel.



PTIL12TLB0083AB 5

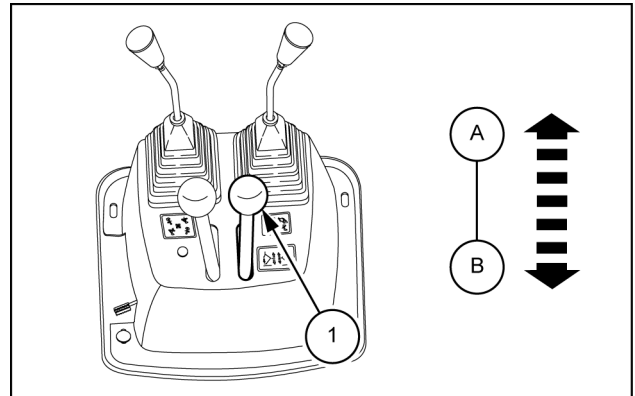
Stabilizer control

Left-hand stabilizer left-hand control lever

The lever (1) has two positions:

Position "A": The left-hand stabilizer lowers.

Position "B": The left-hand stabilizer rises.



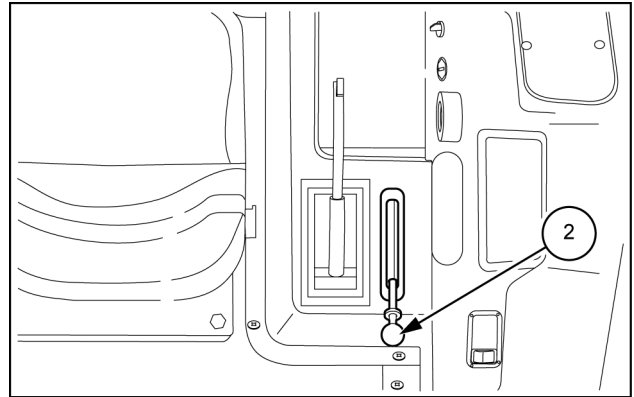
PTIL12TLB0492AB 1

Moving the unit

Moving the unit

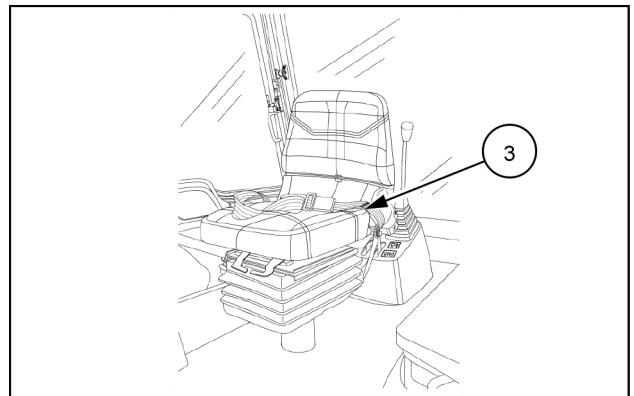
NOTE: After road travel, remove all road safety devices before carrying out any job site travel.

1. Make sure that the engine accelerator lever (2) is in low idle position.
2. Make sure the stabilizers are completely raised.
3. Make sure the doors are properly closed and the engine tilt hood is closed and locked.



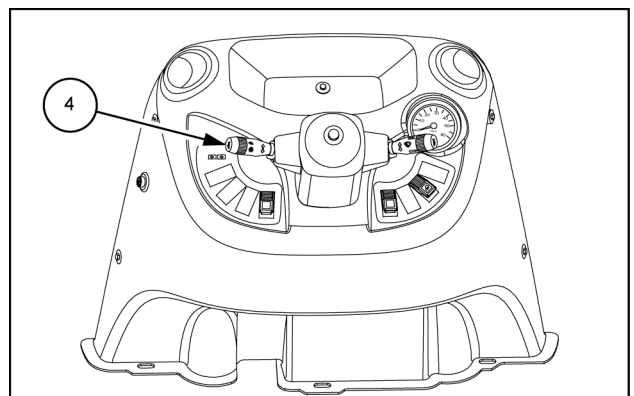
PTIL12TLB0430AB 1

4. Adjust the operator's seat correctly.
5. Fasten the seat belt (3) correctly and then adjust it.



PTIL17TLB0018AB 2

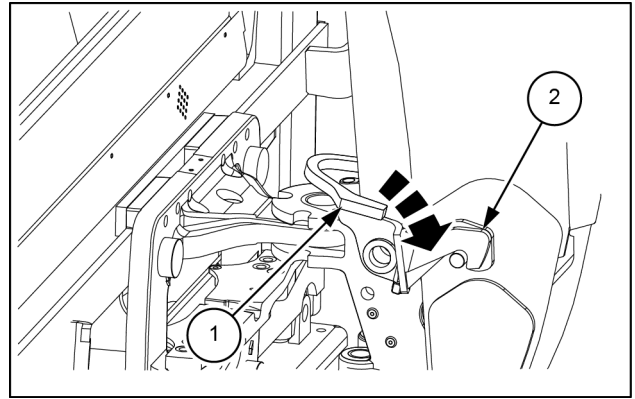
6. Check that the direction of travel lever (4) is in neutral position.
7. Start the engine. Raise the loader attachment about 20 cm (7.9 in) off the ground.



PTIL17TLB0019AB 3

5 - TRANSPORT OPERATIONS

10. Lock the backhoe attachment.
11. Raise the stabilizers completely.
12. Run the engine at low idle speed.
13. Turn the seat round to the loader attachment position.
14. Raise the loader bucket.
15. Stop the engine and remove the starter switch key.



PTIL12TLB0125AB 4

Lifting the machine

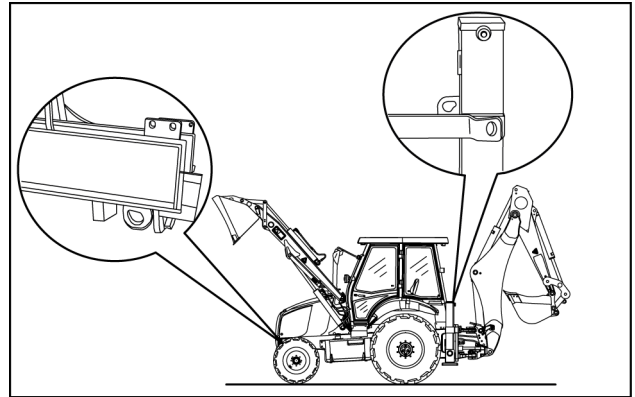
NOTICE: Before lifting the machine, it is essential to place the backhoe attachment in the road travel position.

The hooking points for the machine are shown by decals.

NOTICE: Never use any other hooking points than those shown by the decals.

Use suitable slings to lift the machine. Make sure that the slings are in perfect condition and that they can support the weight of the machine.

NOTE: Do not allow anybody within the machine's working range. Never suspend the machine over people who are in proximity.



PTIL12TLB0132AA 1

Setting the backhoe attachment in working position

⚠ WARNING

Overturning hazard!

Be careful when you operate the machine on a hillside. You must be in the operator's seat (loader operation position) when you move the machine forward. Always engage the parking brake and shift the direction control lever and the transmission to neutral before you operate the backhoe.

Failure to comply could result in death or serious injury.

W0220A

⚠ WARNING

Equipment failure could cause accident or injury!

Always fasten the seat belt securely before you operate the machine. Inspect seat belt parts for wear and damage. Replace any and all worn or damaged parts of the seat belt prior to operation.

Failure to comply could result in death or serious injury.

W0046C

1. Ensure that the direction-of-travel control lever is in neutral position.
2. Ensure the gearshift lever is in neutral position.
3. Make sure that the parking brake is engaged.
4. Start the engine.
5. Lower the loader bucket to the ground and ensure that front tires are raised approximately **20.0 cm (7.9 in)** from the ground.
6. Turn the seat round to the backhoe attachment position and adjust it correctly.
7. Accelerate and run the engine at the required speed.
8. Lower the stabilizers till the rear wheels are raised.

NOTE: *Whenever the backhoe attachment is used, the machine must always be resting on the stabilizers.*

⚠ WARNING

Hazard to bystanders!

The operator must be the only person on the machine when towing. Make sure that nobody else is on the machine or within its working range.

Failure to comply could result in death or serious injury.

W0259A

9. Release the safety lock and operate the boom.

⚠ WARNING

Hazard to bystanders!

Always sound the horn before starting the machine. Make sure the work area is clear of other persons, domestic animals, tools, etc. before you operate the machine. Never allow anyone in the work area during machine operation.

Failure to comply could result in death or serious injury.

W0304A

⚠ WARNING

Avoid injury!

Operate controls only when seated in the operator's seat.

Failure to comply could result in death or serious injury.

W0956A

CLICK HERE TO **DOWNLOAD** THE COMPLETE MANUAL

- Thank you very much for reading the preview of the manual.
- You can download the complete manual from: www.heydownloads.com by clicking the link below



- Please note: If there is no response to CLICKING the link, please download this PDF first and then click on it.

CLICK HERE TO **DOWNLOAD** THE COMPLETE MANUAL

Fuel storage

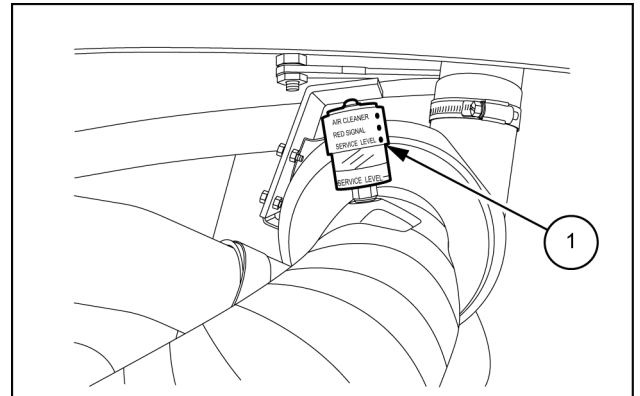
Prolonged storage of fuel can lead to the accumulation of impurities and condensation in the fuel. Engine trouble can often be traced to the presence of water in the fuel. The storage tank must be placed outside and the temperature of the fuel should be kept as low as possible. Drain off water and impurities regularly.

Parking brake

The parking brake is not serviceable. If a reduction of the braking action is detected, contact your NEW HOLLAND CONSTRUCTION Dealer.

Restriction Indicator– Check

1. Move the machine to a level and firm ground.
2. Raise the loader attachment and install the safety support strut.
3. Place the backhoe attachment in the road travel position.
4. Ensure the direction-of-travel lever and gearshift lever are in neutral position.
5. Engage the parking brake.
6. Stop the engine and remove the key.
7. Visually inspect the restriction indicator **(1)** mounted on the intake hose.
8. Check if any red coloured band is surrounding the spring within the indicator.
9. If red coloured band is visible then clean the air filter as described in “As Required”.



PTIL12TLB0448AB 1

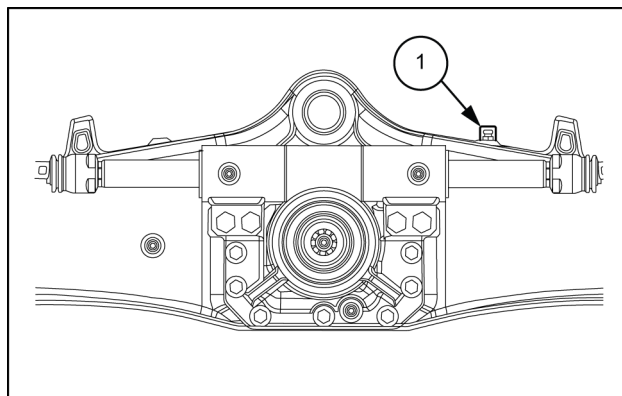
NOTE: Wait until the machine components attain normal temperature before proceeding to clean the air filter.

Front axle breather (4WD Only) - Clean

1. Follow Machine safety position. (Refer **Engine - Safety rules**)
2. Clean the area around the breather valve **(1)**.
3. Loosen and remove the valve.
4. Clean the breather valve **(1)** with a detergent solution.

NOTE: Follow the instructions for the detergent solution.

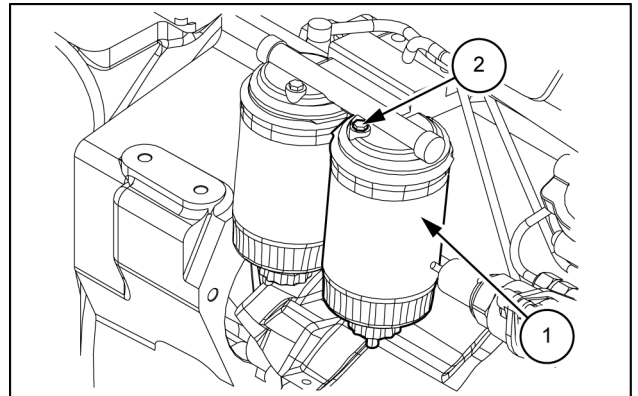
5. Carefully dry the breather valve **(1)** with compressed air and reinstall it.
6. Screw in the breather valve again.



PTIL12TLB0478AB 1

Fuel filter - Change

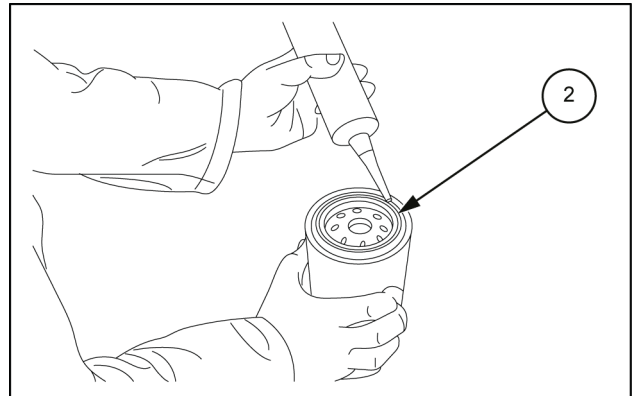
1. Follow machine safety position. (Refer **Engine - Safety rules**)
2. Open and raise the engine tilt hood.
3. Clean the filter assembly externally.
4. Loosen the bleed screw **(2)**.
5. Unscrew the fuel filters **(1)** and discard.
6. Clean the filter mounting surface.



PTIL12TLB0445AB 1

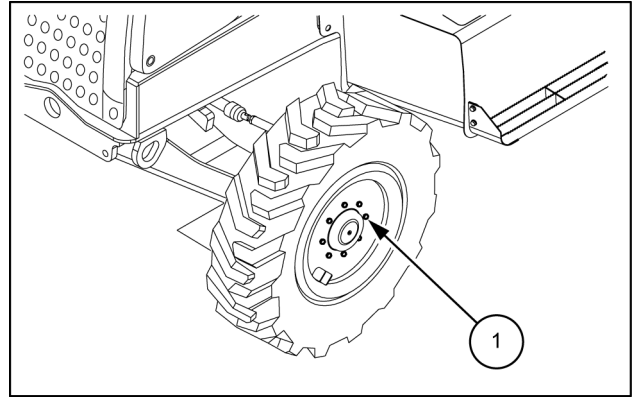
7. Apply a thin film of clean oil on the new oil filter sealing ring **(2)** and install the filter.
8. Turn until the sealing ring contacts the mounting surface, then tighten an additional 3/4 to 1 full turn.
9. Do not over tighten.
10. With the bleed screw loose, prime the fuel system with the help of priming pump.
11. Start the engine and ensure no fuel is leaking.

NOTE: Do not use non genuine spare parts. Injection pump may get damaged by using a non genuine filter.



PTIL12TLB0231AB 2

6. Install front wheel.
7. Tighten the wheel nuts **(1)** to a torque of **196.13 N·m**
(144.66 lb ft).



PTIL12TLB0190AB 5

Inflating pressure details

2WD		
Type of rear tyre	Front tyres	Rear tyres
Standard	5.52 bar (80 psi)	1.79 bar (26 psi)
Heavy duty		2.76 bar (40 psi)

4WD		
Type of rear tyre	Front tyres	Rear tyres
Standard	2.41 bar (35 psi)	1.79 bar (26 psi)

8 - TROUBLESHOOTING

Symptom(s)

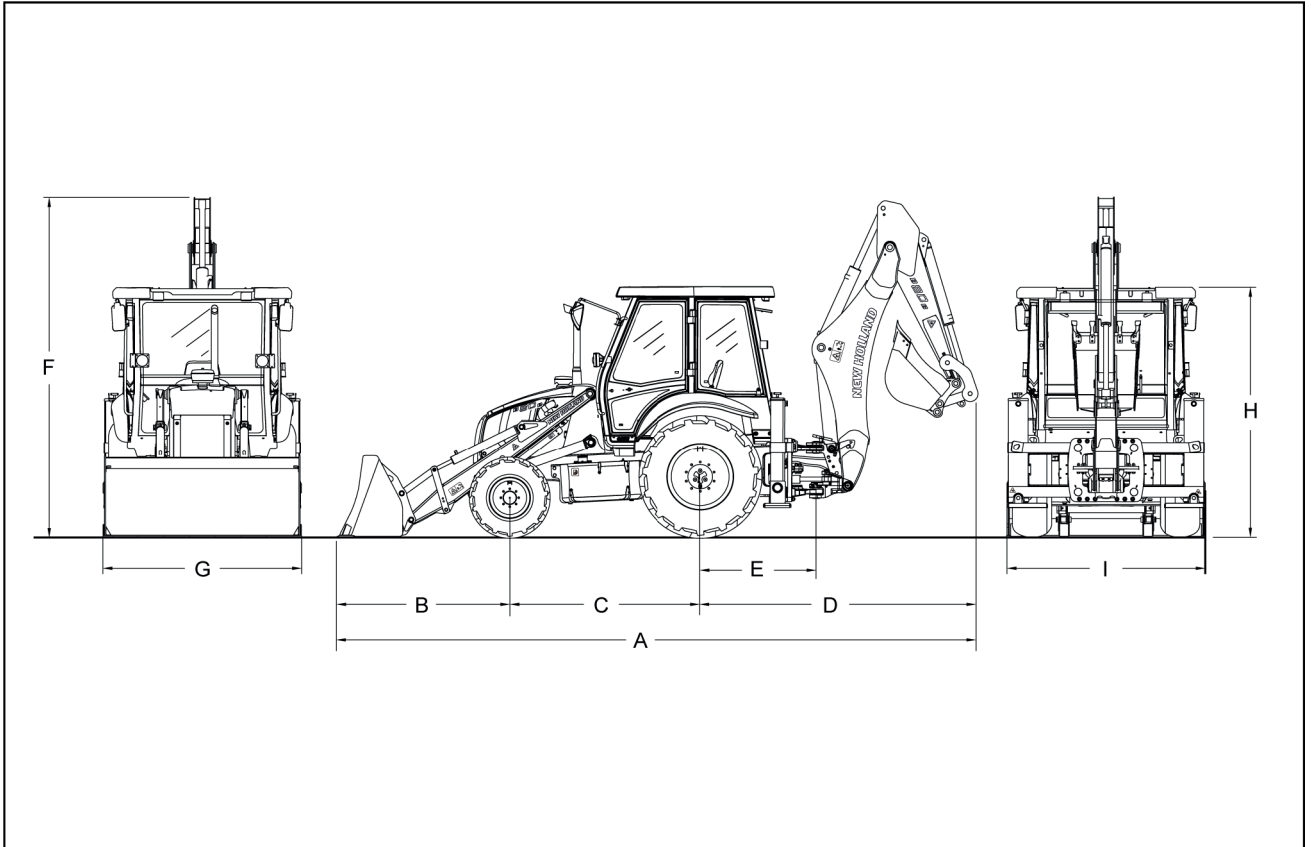
Engine - Troubleshooting

Problem	Possible Cause	Correction
The engine does not start	Partially discharged batteries	Check, charge the batteries and, if necessary, replace them
	Corroded or loose connections to the battery terminals	Clean, inspect, tighten the nuts and, if necessary, replace the excessively corroded terminals and nuts
	Dirt or water accumulations in fuel lines	Disconnect the lines and the injection pump and carefully clean them; if necessary, clean and dry the fuel tank
	No fuel in the tank	Fill the tank
	No supply to the injection pump	Check and, if necessary, replace the supply pump
	Air in the fuel system	Check the lines, the fittings, the supply pump, the filters and the injection pump for the presence of air, then bleed the system
	Damaged starter motor	Repair or replace the starter motor
The engine stops	Irregular delivery of the supply pump	Check delivery on the workbench
	Dirt or water accumulations in fuel lines	Disconnect the lines and the injection pump and carefully clean them; if necessary, clean and dry the fuel tank
	Restricted fuel filters	Replace the filter cartridges
	Burned or cracked valves	Replace the valves
	Air in the fuel system	Check the lines, the fittings, the supply pump, the filters and the injection pump for the presence of air, then bleed the system
	Damaged injection pump controls	Replace the damaged parts
The engine overheats	The centrifugal pump of the cooling system is faulty	Overhaul the pump and, if necessary, replace it
	Faulty temperature switch	Replace the temperature switch
	Radiator partially faulty	Eliminate possible scales by washing, check and repair possible tube leaks
	Scales in coolant passage compartments in cylinder heads and crankcase	Carefully wash
	Centrifugal pump drive belt and fan drive belt too slack	Check and adjust belt tension
	Coolant (insufficient quantity)	Restore the level in the expansion tank by adding the prescribed fluid
	Incorrect timing of the engine	Check and correctly time the engine
	Restricted air filter	Clean the assembly and, if necessary, replace the filter element
The engine has anomalous knocks	Partially obstructed or damaged injectors	Clean, overhaul and correctly calibrate the injectors
	Dirt accumulations in fuel lines	Clean the lines and replace the visibly dented pipes; if necessary, clean the injection pump
	Drive shaft knocks caused by an excessive clearance of one or more crankshaft bearings or big end bearings or excessive shoulder clearance	Rectify the drive shaft pins, assemble bigger shoulder bearings and rings
	Unbalanced drive shaft	Check the alignment and the balance of the drive shaft and, if necessary, replace it
	Loose flywheel retaining screws	Replace the loose screws and tighten all screws to the prescribed torque + angle

Hydraulic systems - Troubleshooting

Problem	Possible Cause	Correction
All circuits fail to operate	Pump drive inoperative	Check and repair as necessary
	Low oil level	Check the level and top up
	Restricted pump suction line	Inspect the suction line and the tank and repair as necessary
Slow operation or loss of power in all circuits	Worn pump	Make a pump performance test, replace and reseal as necessary
	Restricted pump suction line	Inspect the suction line and the tank and repair as necessary
	Load sensing pressure relief valve incorrectly adjusted	Make a system pressure test
	Hydraulic speed solenoid valve inoperative	Make a system pressure test

Machine dimension (optional)



PTIL177LB0030FB 2

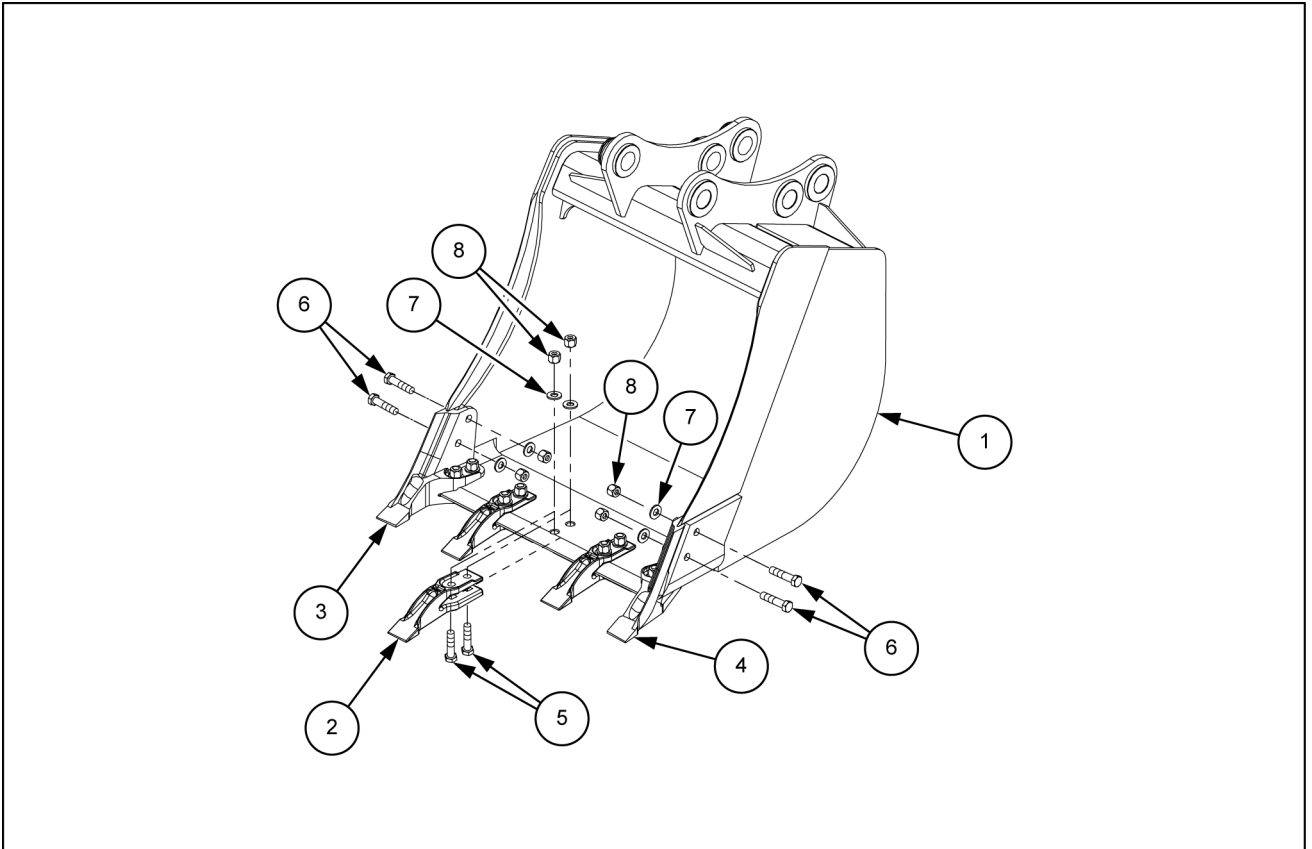
S. No.	Description	Dimension
A	Overall machine length	5880 mm (231.50 in)
B	Loader bucket reach	1980 mm (77.95 in)
C	Wheelbase	2175 mm (85.63 in)
D	Backhoe bucket dimensions	1725 mm (67.91 in)
E	Rear wheel base - backhoe attachment swing support	1325 mm (52.17 in)
F	Maximum machine height	3820 mm (150.39 in)
G	Loader bucket width	2277 mm (89.65 in)
H	Cab height	2850 mm (112.20 in)
I	Stabilizer width	2270 mm (89.37 in)

Torque chart – Inch flanged hardware

Nominal size	SAE grade 5 bolt and nut		SAE grade 8 bolt and nut		Locknut GrB W/Gr5 bolt	Locknut GrC W/Gr8 bolt
	Unplated or plated silver	Plated W/ZnCr gold	Unplated or plated silver	Plated W/ZnCr gold		
1/4	9 N·m (80 lb in)	12 N·m (106 lb in)	13 N·m (115 lb in)	17 N·m (150 lb in)	8 N·m (71 lb in)	12 N·m (106 lb in)
5/16	19 N·m (168 lb in)	25 N·m (221 lb in)	26 N·m (230 lb in)	35 N·m (310 lb in)	17 N·m (150 lb in)	24 N·m (212 lb in)
3/8	33 N·m (24 lb ft)	44 N·m (32 lb ft)	47 N·m (35 lb ft)	63 N·m (46 lb ft)	30 N·m (22 lb ft)	43 N·m (32 lb ft)
7/16	53 N·m (39 lb ft)	71 N·m (52 lb ft)	75 N·m (55 lb ft)	100 N·m (74 lb ft)	48 N·m (35 lb ft)	68 N·m (50 lb ft)
1/2	81 N·m (60 lb ft)	108 N·m (80 lb ft)	115 N·m (85 lb ft)	153 N·m (113 lb ft)	74 N·m (55 lb ft)	104 N·m (77 lb ft)
9/16	117 N·m (86 lb ft)	156 N·m (115 lb ft)	165 N·m (122 lb ft)	221 N·m (163 lb ft)	106 N·m (78 lb ft)	157 N·m (116 lb ft)
5/8	162 N·m (119 lb ft)	216 N·m (159 lb ft)	228 N·m (168 lb ft)	304 N·m (224 lb ft)	147 N·m (108 lb ft)	207 N·m (153 lb ft)
3/4	287 N·m (212 lb ft)	383 N·m (282 lb ft)	405 N·m (299 lb ft)	541 N·m (399 lb ft)	261 N·m (193 lb ft)	369 N·m (272 lb ft)
7/8	462 N·m (341 lb ft)	617 N·m (455 lb ft)	653 N·m (482 lb ft)	871 N·m (642 lb ft)	421 N·m (311 lb ft)	594 N·m (438 lb ft)
1	693 N·m (511 lb ft)	925 N·m (682 lb ft)	979 N·m (722 lb ft)	1305 N·m (963 lb ft)	631 N·m (465 lb ft)	890 N·m (656 lb ft)

Backhoe buckets

Backhoe bucket assy (0.26 m³ (9.2 ft³))



PTIL12TLB0460FB 1

S.No	Description
1	Backhoe bucket
2	Centre tooth - bucket
3	Side cutting tooth left-hand side
4	Side cutting tooth right-hand side
5	Bolt
6	Bolt
7	Washer
8	Nylock nut

CLICK HERE TO **DOWNLOAD** THE COMPLETE MANUAL

- Thank you very much for reading the preview of the manual.
- You can download the complete manual from: www.heydownloads.com by clicking the link below



- Please note: If there is no response to CLICKING the link, please download this PDF first and then click on it.

CLICK HERE TO **DOWNLOAD** THE COMPLETE MANUAL