



2066

2076

2086

Including
2076 (EU)
2086 (EU)
Skid-Steer
Loaders

Operator's
Manual

#917326/DPO112



Manitou Americas, Inc.

P.O. Box 179

West Bend, WI 53095-0179 USA

CLICK HERE TO **DOWNLOAD** THE COMPLETE MANUAL

- Thank you very much for reading the preview of the manual.
- You can download the complete manual from: www.heydownloads.com by clicking the link below



- Please note: If there is no response to CLICKING the link, please download this PDF first and then click on it.

CLICK HERE TO **DOWNLOAD** THE COMPLETE MANUAL

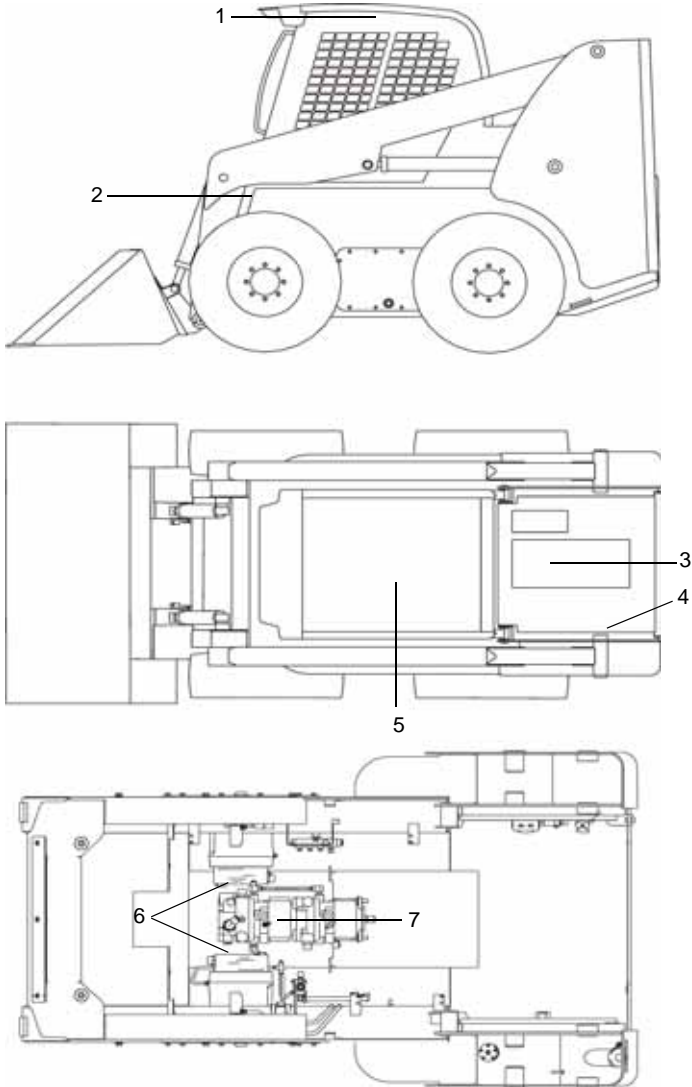
During Operation

- Machine stability is affected by: load being carried, height of the load, machine speed, abrupt control movements and driving over uneven terrain. **DISREGARDING ANY OF THESE FACTORS CAN CAUSE THE LOADER TO TIP, THROWING THE OPERATOR OUT OF THE SEAT OR LOADER, RESULTING IN DEATH OR SERIOUS INJURY.** Therefore: ALWAYS operate with the seatbelt fastened and the restraint bar lowered. Do not exceed the machine's Rated Operating Load. Carry the load low. Move the controls smoothly and gradually, and operate at speeds appropriate for the conditions.
- When operating on inclines or ramps, always travel with the heavier end of the loader toward the top of the incline for additional stability.
- Do not raise or drop a loaded bucket or fork suddenly. Abrupt movements under load can cause serious instability.
- Never activate the float function with the bucket or attachment loaded or raised, because this will cause the lift arm to lower rapidly.
- Do not drive too close to an excavation or ditch; be sure that the surrounding ground has adequate strength to support the weight of the loader and the load.
- Never carry riders. Do not allow others to ride on the machine or attachments, because they could fall or cause an accident.
- Always look to the rear before backing up the skid-steer loader.
- Operate the controls only from the operator's seat.
- Always keep hands and feet inside the operator's compartment while operating the machine.
- New operators must operate the loader in an open area away from bystanders. Practice with the controls until the loader can be operated safely and efficiently.
- Wear safety goggles and head protection while operating the machine. Operator must wear protective clothing when appropriate.
- Exhaust fumes can kill. Do not operate this machine in an enclosed area unless there is adequate ventilation.
- When parking the machine and before leaving the seat, check the restraint bar for proper operation. The restraint bar, when raised, deactivates the lift/tilt controls and auxiliary hydraulics, and applies the parking brake.

Maintenance

- Never attempt to by-pass the keyswitch to start the engine. Use only the jump-starting procedure detailed in the *Operation* chapter of this manual.
- Never use your hands to search for hydraulic fluid leaks. Instead, use a piece of paper or cardboard. Escaping fluid under pressure can be invisible and can penetrate the skin and cause serious injury. If any fluid is injected into your skin, see a doctor at once. Injected fluid must be surgically removed by a doctor or gangrene may result.

Product and Component Plate Locations



Product and Component Plates

1. Operator protection system plate: with model, certification and operator protection system serial number (located inside left ROPS/FOPS)
2. Skid-steer serial number imprint
3. Engine plate: with type designation, product and serial number
4. Product plate: with Product Identification Number and model/type designation
5. Seat plate according to ISO 7096 (located on seat)
6. Component, right and left drive motor: with product and serial number
7. Component, hydrostatic transmission: with product and serial number

Instrument Panels

The instrument panels contain the switches and indicator lights. Symbols on the indicator lights are visible only when the indicator light are on.

Left Panel

1. **Two-Speed Transmission (optional)** – Lights when high speed is engaged.
2. **Parking Brake** – Lights when the parking brake is applied.
3. **Power-A-Tach®** – Used to actuate the Power-A-Tach.
4. **Fan (optional)** – Used to control the fan speed for the air conditioner and heater.
5. **Heater/Air Conditioner Selector (optional)** – Used to control the heater and air conditioner.
6. **Accessory Plug** – 12-volt DC power outlet.
7. **Engine Malfunction** – Lights when the engine electronic control unit (ECU) has detected a failure warranting an automatic shutdown. The indicator lamp also displays error codes when the key switch is turned to the “on” position. See Engine Diagnostics chart on page 63.
8. **Hydraglide™ Ride Control System** – Lights when the ride control system is activated.
9. **Float Indicator Switch** – Lights when float function is activated.
10. **Parking Brake Switch** – Used to manually apply the parking brake.

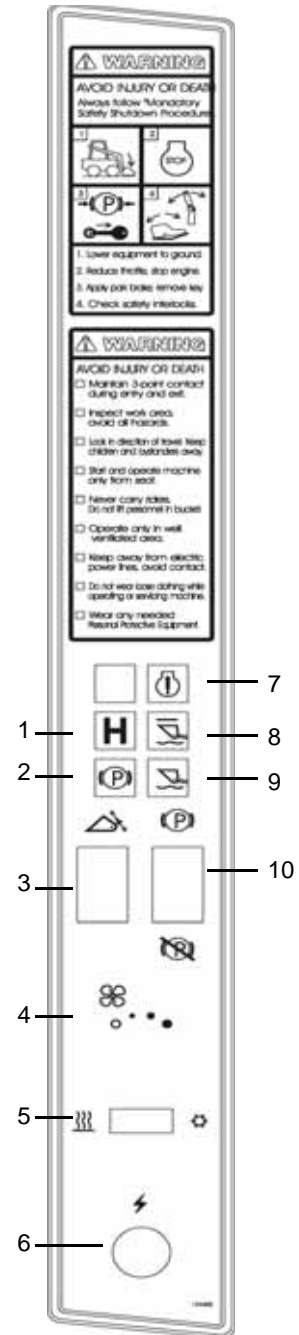



Figure 10 Left Panel

OPERATION

 **WARNING** Before starting the engine and operating the loader, review and comply with all safety recommendations in the *Safety* chapter of this manual. Know how to stop the loader before starting it. Also, be sure to fasten and properly adjust the seatbelt(s) and lower the operator restraint bar.

Before Starting the Engine

Before starting the engine and running the loader, refer to the *Controls and Safety Equipment* chapter and familiarize yourself with the various operating controls, indicators and safety devices on the loader.

Fuel

The engine requires low sulfur or ultra-low sulfur diesel fuel to maintain proper engine performance. Yanmar will allow up to a 5% (B5) mixture of BioDiesel.

Starting the Engine

The following procedure is recommended for starting the engine:

1. Carefully step up onto the back of the bucket or attachment and grasp the handholds to enter the operator's compartment.
2. Fasten the seatbelt(s) and lower the restraint bar.
3. Verify the following:
 - the lift/tilt, drive and auxiliary hydraulic controls are in their neutral positions,
 - the parking brake switch is ON.

Note: When the key is turned to the RUN position, an indicator will light on the instrument panel and a buzzer will sound momentarily to remind users to fasten the seatbelt.

4. Turn the key to the START position.

Note: If temperature is below 32°F (0°C), see *Cold-Starting Procedure*, on page 38.

Important: Do not engage the starter for longer than 15 seconds at a time. Longer use can overheat and damage the starter. If the engine fails to start within 15 seconds, return the key to the OFF position. Allow the starter to cool for 20 seconds and repeat step 4.

After the engine starts, allow a five minute low idle period before operating the controls.

Highway Travel

If it becomes necessary to move the loader a long distance, use a properly rated trailer. (See *Transporting the Loader* on page 48.) For short distance highway travel, attach an SMV (Slow-Moving Vehicle) emblem (purchased locally) to the back of the loader. For highway operation, install the optional amber strobe light. Check state and local laws and regulations.

Storing the Loader

If the skid-steer loader is to be stored for a period in excess of two month, the following procedures are suggested:

1. Fully inflate the tires.
2. Lubricate all grease zerks.
3. Check all fluid levels and replenish as necessary.
4. Add stabilizer to the fuel per the fuel supplier's recommendations.
5. Remove the battery, charge fully and store in a cool, dry location.
6. Protect against extreme weather conditions such as moisture, sunlight and temperature.

Removing Loader from Storage

1. Check the tire air pressure and inflate the tires if they are low.
2. Connect the battery.
3. Check the fan belt tension.
4. Check all fluid levels (engine oil, transmission/hydraulic oil, engine coolant and any attached implements).
5. Start the engine. Observe all gauges. If all gauges are functioning properly and reading normal, move the machine outside.
6. Once outside, park the machine and let the engine idle for at least five minutes.
7. Shut the engine off and walk around machine. Make a visual inspection looking for evidence of leaks.

Chaincases

There is a chaincase on each side of the loader. Refer to the *Maintenance Interval Chart* (page 83) for change intervals. Refer to the *Lubrication* chart (page 56).

Checking and Adding Oil

1. Park the loader on a level surface. Stop the engine.
2. Remove the fill check plug (Figure 33) from each chaincase cover. The oil level should be at the plug level or no more than 1/4 in. (6 mm) below.
3. If the level is low, add fluid through the fill plug (Figure 33) until the oil level reaches the check plug hole. Reinstall the plugs.

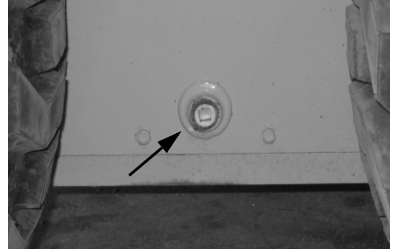


Figure 33 Fill Plug Location

Draining Oil

1. Park the loader on a level surface, or on a sloping surface with the loader facing downhill and the tires blocked.
2. Remove the drain plug on each chaincase (Figure 34) and drain the oil into a suitable container.
3. Reinstall and tighten the drain plugs.
4. Refill the chaincases at the fill plugs.

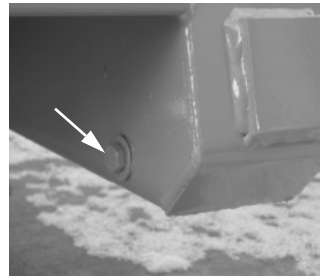


Figure 34 Drain Plug

Hydraulic System

Refer to the *Maintenance Interval Chart* (page 83) for service intervals. Refer to the *Replacement Parts* chart (page 52) for filter part numbers.

⚠ WARNING Before servicing the hydraulic system, be sure the lift arm is lowered.

Checking Hydraulic Oil Level

The loader has a sight gauge located at the right rear of the skid-steer loader inside the engine compartment (Figure 39). Check the fluid level with the lift arm lowered and the attachment on the ground.

Add hydraulic oil as required. Refer to the *Lubrication* chart (page 55). Replace the fill cap.

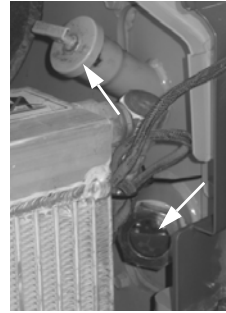


Figure 39 Sight Gauge and Fill Tube

Changing Hydraulic Oil Filter

To check the hydraulic filter element, run the engine at full throttle and normal operating temperature. Lift the engine access cover. Observe the hydraulic filter indicator located on the filter head (Figure 40). If the indicator is green, the filter does not need replacing. If the indicator is red, replace the filter following the instructions below.

1. Turn off the engine.
2. Open the reservoir drain plug located on the inside bottom of the right riser.
3. Drain the oil to a level below the point where the filter attaches to the reservoir.
4. Replace the reservoir drain plug.
5. Spin off the old hydraulic filter element and spin on the new filter element.
6. Tilt back the ROPS/FOPS.
7. Refill the hydraulic oil reservoir with oil. Refer to the *Lubrication* chart (page 55).



Figure 40 Hydraulic Oil Filter and Indicator

Hydrostatic Drive System

Problem	Possible Cause	Remedy
<p>Sluggish acceleration.</p>	<p>Air in hydraulic system.</p> <p>Hydraulic oil level too low.</p> <p>Hydrostatic system charge pressure low.</p> <p>Drive motor(s) or hydrostatic pump(s) have internal damage or leakage.</p>	<p>Cycle lift and tilt cylinders to maximum stroke and maintain pressure for short time to clear air from system. Also check for low oil level in reservoir, fill as needed.</p> <p>Check for low oil level in reservoir, add oil.</p> <p>Contact your dealer.</p> <p>Contact your dealer.</p>
<p>Hydrostatic drive overheating.</p>	<p>Drive system overloaded continuously.</p> <p>Lift/tilt or auxiliary system overloaded continuously.</p> <p>Drive motor(s) or hydrostatic pump(s) have internal damage or leakage.</p> <p>Oil cooler fins plugged with debris.</p> <p>Hydrostatic oil filter plugged or restricted.</p> <p>Loader being operated in high temperatures with no air circulation.</p>	<p>Improve efficiency of operation.</p> <p>Improve efficiency of operation.</p> <p>Contact your dealer.</p> <p>Clean oil cooler fins.</p> <p>Replace filter.</p> <p>Reduce duty cycle; improve air circulation.</p>

CHAPTER 8

SPECIFICATIONS

Loader Specifications

Specification	2066
Operating Weight	7460 lbs. (3384 kg)
Shipping Weight	6716 lbs. (3046 kg)
Rated Operating Load ¹	2000 lbs. (907 kg)
Engine	
Make	Yanmar
Model	4TNV98
Displacement	202 cu. in. (3,31 L)
Power (net)	68 hp (51 kW) @ 2500 rpm
Peak Torque	180 ft.-lb. (244 N·m) @ 1600 rpm
Hydraulic System (theoretical)	
Main Hydraulic System Pressure	3000 psi (207 bar)
Standard-Flow Rating	21.5 gpm (81 L/min)
High-Flow (Option) - Flow Rating	NA
Electrical	
Battery	12-Volt DC, 950 CCA
Starter	12-Volt DC (3.0 kW)
Alternator	95 amperes
Capacities	
Chaincase (each)	8.0 U.S. qts. (7,6 L)
Engine Oil	11.0 U.S. qts. (10,4 L)
Engine Coolant	9.0 U.S. qts. (8,5 L)
Fuel Tank	19 U.S. gal. (72 L)
Hydraulic Reservoir	16 U.S. gal. (61 L)
Sound Levels (with EU Sound Attenuation Package)	
Sound Pressure Level (Operator Ear)	85 dB(A)
Sound Power Level (Environmental)	102 dB(A)

1. Operating load rated with an 67.5 in. (1715 mm) 16.8 cu. ft. (0.48 m³) Earth and Foundry with High Back bucket and 12 x 16.5 NHS tires in accordance with SAE J818 and ISO 14397-1.

CLICK HERE TO **DOWNLOAD** THE COMPLETE MANUAL

- Thank you very much for reading the preview of the manual.
- You can download the complete manual from: www.heydownloads.com by clicking the link below



- Please note: If there is no response to CLICKING the link, please download this PDF first and then click on it.

CLICK HERE TO **DOWNLOAD** THE COMPLETE MANUAL