



647105 EN (12/06/2018)

MT 835 H ST3B
MT 1135 H ST3B
MT 1335 H ST3B

OPERATOR'S MANUAL
(ORIGINAL INSTRUCTIONS)

CLICK HERE TO **DOWNLOAD** THE COMPLETE MANUAL

- Thank you very much for reading the preview of the manual.
- You can download the complete manual from: www.heydownloads.com by clicking the link below



- Please note: If there is no response to CLICKING the link, please download this PDF first and then click on it.

CLICK HERE TO **DOWNLOAD** THE COMPLETE MANUAL

- Adapt the seat adjustment to the operator's weight (according to lift truck model) and maintain it in good condition, as well as the cab suspension. Inflate the tires in accordance with recommendations.
- Ensure that the operators adapt their operating speed to suit the conditions on site.
- As far as possible, arrange the site in such a way as to provide a flat running surface and remove obstacles and harmful potholes.

C - MODIFICATION OF THE LIFT TRUCK

- For your safety and that of others, you must not change the structure and settings of the various components used in your lift truck (hydraulic pressure, calibrating limiters, engine speed, addition of extra equipment, addition of counterweight, unapproved attachments, alarm systems, etc.) yourself. In this event, the manufacturer cannot be held responsible.

D - FRENCH ROAD TRAFFIC RULES

(or see current legislation in other countries)

- Only one certificate of conformity is issued. It must be kept in a safe place.
- The driving of non EC type-approved tractors on the public highway is subject to the provisions of the highway code relating to special machines, defined in article R311-1 of the highway code, in category B of the Equipment Order of 20 November 1969 that determines the procedures applicable to special machines. The lift truck must be fitted with a licence plate.
- The driving of EC type-approved tractors on the public highway is subject to the provisions of the highway code regarding agricultural tractors, defined in article R311-1 of the highway code. The lift truck must be registered.

SPECIAL INSTRUCTION APPLYING TO "EC TRACTOR" TYPE-APPROVED LIFT TRUCKS

- All EC tractor type-approved lift trucks are supplied with an "EC tractor" certificate complying with directive 2003/37/EC, to be retained by the owner, and a page of administrative details together with a CNIT number (national type approval code) for registration at the prefecture.
- The lift truck owner is responsible for carrying out the necessary procedures for obtaining the vehicle registration document within the time limit defined by the regulations.
- The operator must hold an HGV licence, unless granted an exemption.
- The lift truck must be driven on the public highway in accordance with the instructions given in the manual supplied with the lift truck (Gross weight, Gross combination weight, towing load, axle loads, maximum speeds, etc. according to type/version). The operator must be in possession of the lift truck's registration document.

⚠ IMPORTANT ⚠

*When towing a trailer or agricultural equipment, the travelling speed of the lift truck is limited to 25 km/h.
In this case, a "25" disc must be affixed to the rear of the convoy.*

E - LIFT TRUCK CAB PROTECTION

- All lift trucks comply with the requirements of ISO 3471 (wheel loader code) regarding cab rollover protection (ROPS) and ISO 3449 (Level II) regarding the protection of the cab against falling objects (FOPS).
- "EC TRACTOR" type-approved lift trucks comply, in addition, with Directive 79/622/EC (OECD Code 4) regarding cab rollover protection (ROPS).

⚠ IMPORTANT ⚠

*Structural damage or overturning, a modification, changes or a poorly executed repair can reduce the protective efficiency of the cab, cancelling its compliance.
Do not perform welding or drilling on the cab structure.
Consult your dealer to determine the limits of this structure without cancelling its compliance.*

THE INSTRUCTIONS

- The operator's manual must always be in good condition and kept in the place provided on the lift truck and in the language used by the operator.
- The operator's manual and any plates or stickers which are no longer legible or are damaged, must be replaced immediately.

THE MAINTENANCE

- Maintenance or repairs other than those detailed in part: 3 - MAINTENANCE must be carried out by qualified personnel (consult your dealer) and under the necessary safety conditions to maintain the health of the operator and any third party.

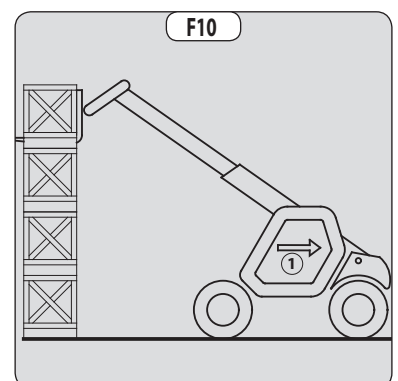
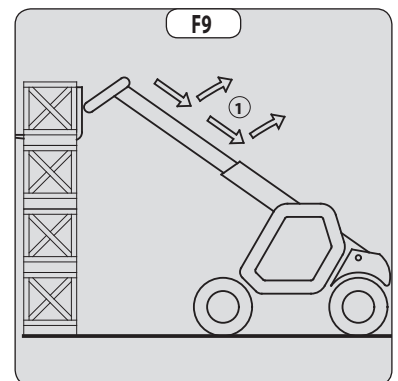
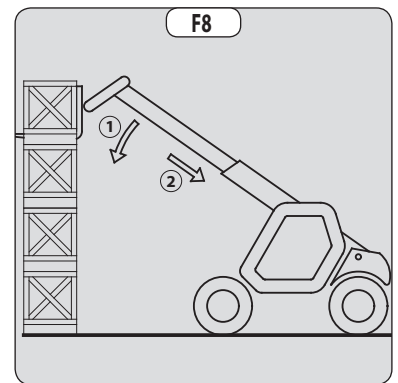
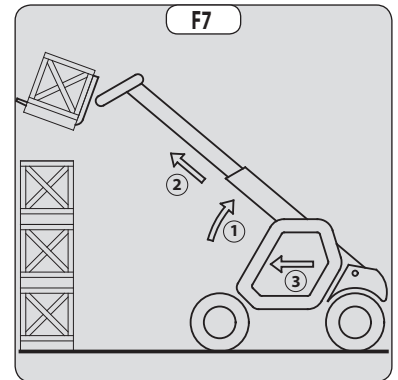
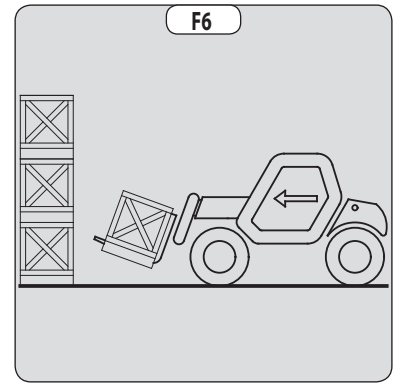
⚠ IMPORTANT ⚠

*Your lift truck must be inspected periodically to ensure that it remains in compliance.
The frequency of this inspection is defined by current legislation in the country in which the lift truck is used.*

- Example for France "The manager in charge of the establishment using a lift truck must open and maintain a maintenance log for each machine (order of 2 March 2004) and undergo a general periodic inspection every 6 months (order of 1 March 2004)".

LAYING A HIGH LOAD ON TYRES

- Approach the load in the transport position in front of the stack (fig. F6).
- Apply the parking brake and place the forward/reverse selector in neutral.
- Raise and extend the jib (1) (2) until the load is above the stack, while monitoring the longitudinal stability limiter and warning device (see: INSTRUCTIONS FOR HANDLING A LOAD: C - LONGITUDINAL STABILITY LIMITER AND WARNING DEVICE). If necessary, move the lift truck (3) forward (fig. F7), driving very slowly and carefully.
- Place the load in a horizontal position and lay it down on the pile by lowering and retracting the jib (1) (2) in order to position the load correctly (fig. F8).
- If possible, release the fork by alternately retracting and raising the jib (1) (fig. F9). Then set the forks into transport position.
- If this is not possible, reverse the lift truck (1) very slowly and carefully to release the forks (fig. F10). Then set them into transport position.



LIFT TRUCK DISPOSAL

MANITOU complies with the regulations deriving from Directive 2000/53/EC relating to lift truck end-of-life. This lift truck contains no substances or materials forbidden by Directive 2000/53/EC.

NOTE: Consult your dealer before disposing of your lift truck.

RECYCLING OF MATERIALS

METALS

- Metals are 100 % recoverable and recyclable.

PLASTICS

- Plastic parts are identified with a marking in accordance with current regulations.
- A limited range of materials is used to simplify the recycling process.
- The majority of plastic components are made of "thermoplastic" plastics, that are easily recycled by melting, granulating or grinding.

RUBBER

- Tyres and seals can be ground for use in cement manufacture or to obtain reusable granules.

GLASS

- Glass items can be removed and collected for processing by glaziers.

ENVIRONMENTAL PROTECTION

By entrusting the maintenance of your lift truck to the MANITOU network, the risk of pollution is limited and the contribution to environmental protection contribution is made.

WORN OR DAMAGED PARTS

- Do not dump them in the countryside.
- MANITOU and its network have signed-up to a scheme of environmental protection through recycling.

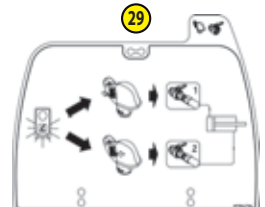
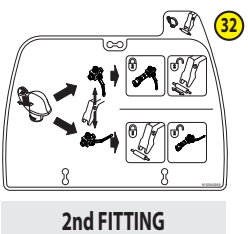
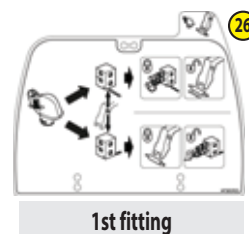
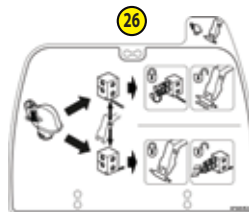
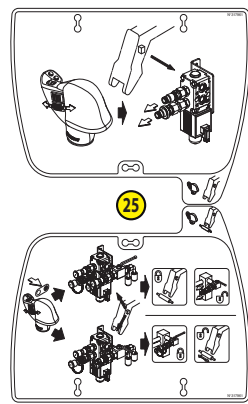
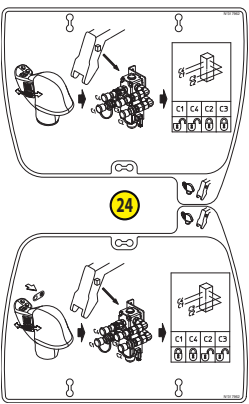
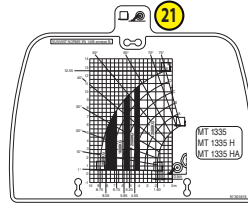
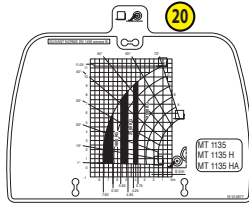
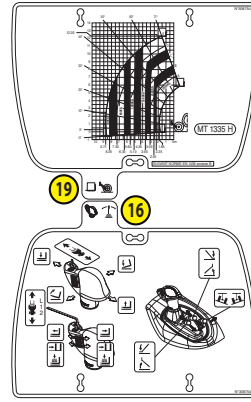
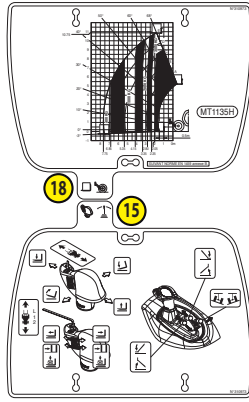
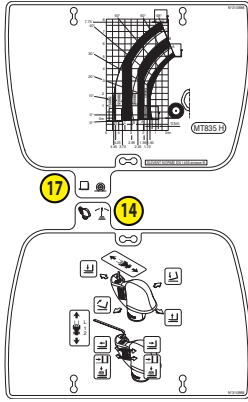
USED OIL

- The MANITOU network organises the collection and processing of used oil products.
- By handing over your waste oil to MANITOU, the risk of pollution is limited.

USED BATTERIES

- Do not throw away batteries, as they contain metals that are harmful for the environment.
- Return them to the MANITOU network or any other approved collection point.

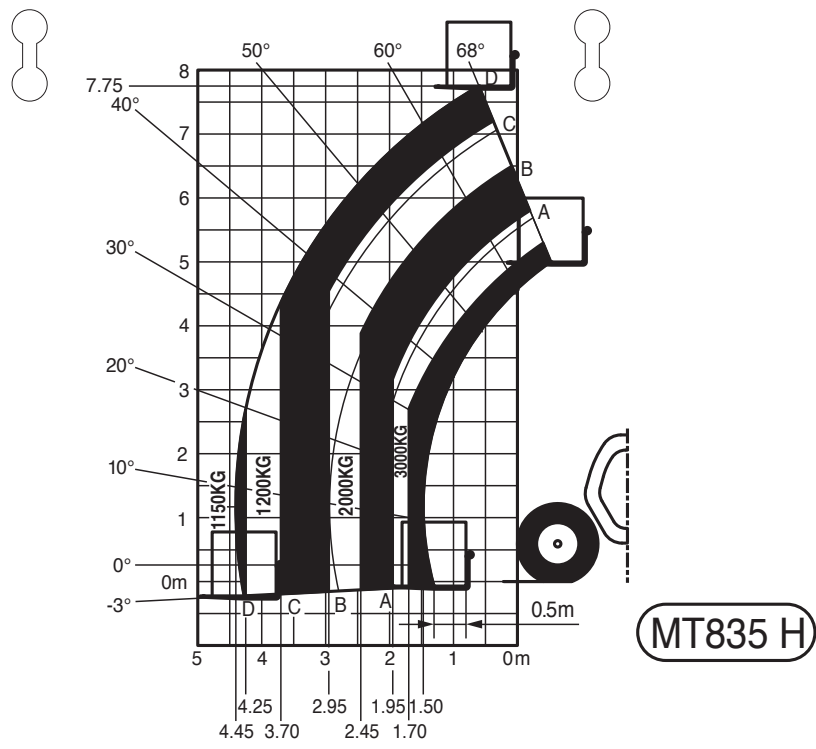
NOTE: MANITOU aims to manufacture lift trucks that provide the best performance and limit polluting emissions.



SOUND AND VIBRATION		
Sound pressure level in the driver's cab LpA (according to standard NF EN 12053)	dB(A)	82 (cab closed) ; xx (cab open)
Sound pressure (according to directive 2009/76)	dB(A)	xx (cab closed) ; xx (cab open)
Sound pressure level ensured in the LwA environment (according to directive 2000/14/EC modified by directive 2005/88/EC)	dB(A)	105 (measured) ; 106 (ensured)
Sound level in motion (according to directive 2009/63)	dB(A)	xx
Average weighted acceleration on driver's body (according to standard NF EN 13059)	m/s ²	2
The average weighted acceleration transmitted to the driver's hand/ arm system (according to standard ISO 5349-2)	m/s ²	< 2,5
Standard seat vibration	m/s ²	xx (lightweight operator) ; xx (heavyweight operator)

HYDRAULIC CIRCUIT			
Hydraulic pump			
- Type		Gear pump with flow divider on 2nd casing	
		1st casing	2nd casing
- Capacity	cm ³	31	22
- Max. rating capacity unladen	l/mn	73	52
- Flow rate at 1600 rpm	l/mn	50	35
Filtration			
- Return	µm	10	10
- Suction	µm	135	135
Maximum service pressure	bar	270	
- Telescoping circuit	bar	180 / 270	
- Lifting circuit	bar	280 / 280	
- Tilt circuit	bar	280 / 200	
- Stabilizers Circuit	bar	270	
- Tilting corrector circuit	bar	270	
- Attachment circuit	bar	270	
- Steering circuit	bar	140	

HYDRAULIC MOVEMENTS		
Longitudinal stability limiter and warning device		Electronic
Lifting motions (boom retracted)		
- Unladen lifting	s - m/mn	8,5 - 37,1
- Laden lifting	s - m/mn	9,3 - 33,9
- Unladen lowering	s - m/mn	7 - 45
- Laden lowering	s - m/mn	6,8 - 46,3
Telescoping motions (boom raised)		
- Unladen extending	s - m/mn	13 - 5,2
- Laden extending	s - m/mn	35 - 14
- Unladen retracting	s - m/mn	9 - 20,2
- Laden retracting	s - m/mn	8,5 - 21,4
Tilting movements		
- Unladen digging	s - °/s	3 - 42,1
- Forward tilting unladen	s - °/s	3 - 42,1



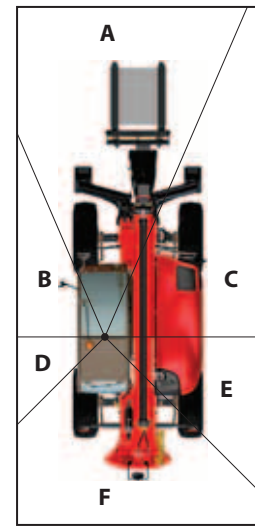
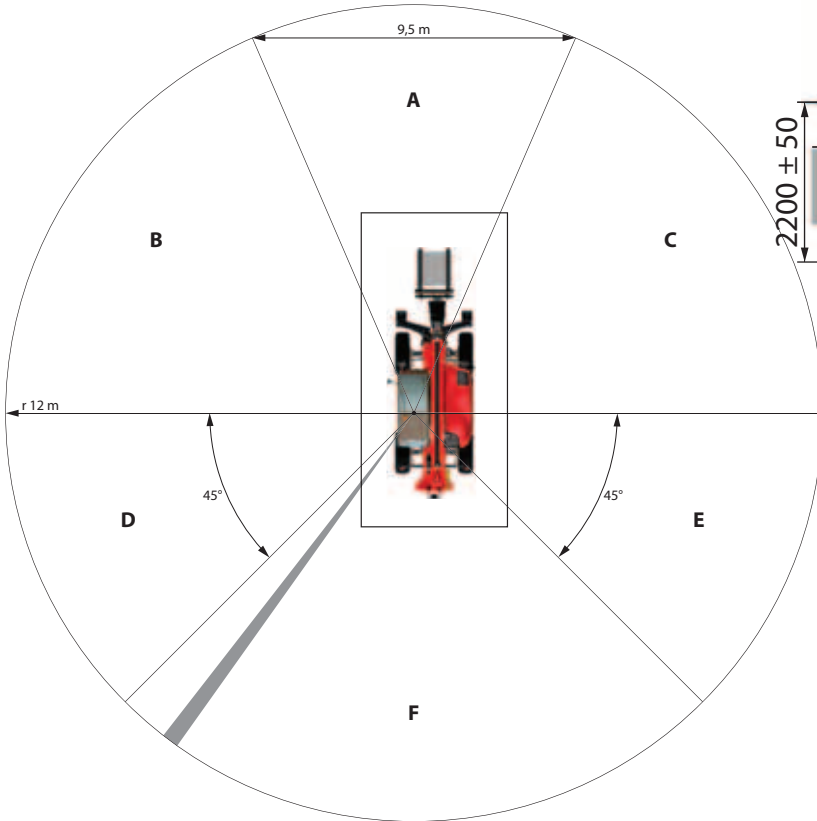
SUIVANT NORME EN 1459 annexe B.



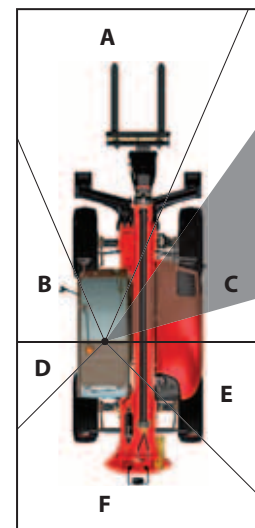
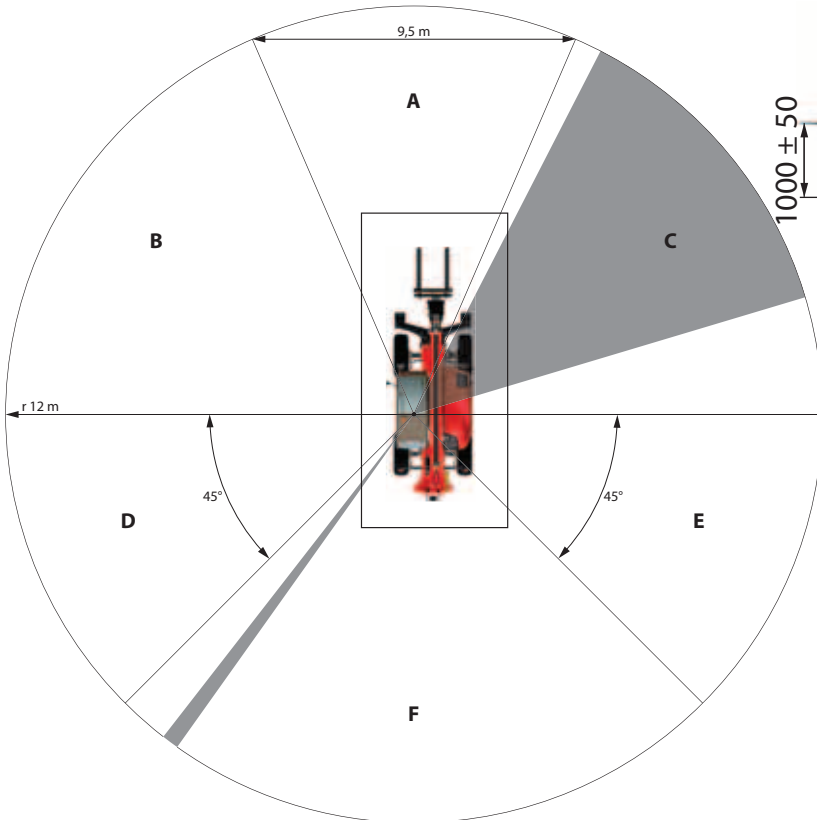
DIRECT AND/OR INDIRECT VISIBILITY BLIND SPOT ZONES

In accordance with EN15830, the two diagrams indicate blind spot zones on the visibility test circle (r 12m) and the 1m rectangular zone around the lift truck.

HANDLING SUSPENDED LOADS



LOADING THE TRAILER



CLICK HERE TO **DOWNLOAD** THE COMPLETE MANUAL

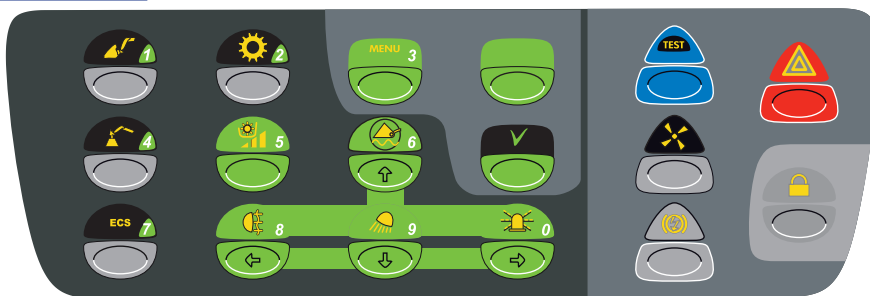
- Thank you very much for reading the preview of the manual.
- You can download the complete manual from: www.heydownloads.com by clicking the link below



- Please note: If there is no response to CLICKING the link, please download this PDF first and then click on it.

CLICK HERE TO **DOWNLOAD** THE COMPLETE MANUAL

6C - PANEL FOR BUTTONS AND KEYBOARD



A beep is sounded each time one of the buttons is pressed.



"BUCKET" MODE

Only for MT 835 H ST3B / MT 1135 H ST3B

See: 2 - DESCRIPTION: 7 - LONGITUDINAL STABILITY LIMITER AND WARNING DEVICE.



NOT USED



"SUSPENDED LOAD" MODE

See: 2 - DESCRIPTION: 7 - LONGITUDINAL STABILITY LIMITER AND WARNING DEVICE.

8 - LONGITUDINAL STABILITY LIMITER AND WARNING DEVICE

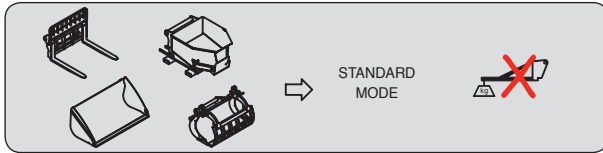
MT 1335 H ST3B

⚠ IMPORTANT ⚠

The operator must respect the lift truck's load chart, and the operating mode according to the attachment.

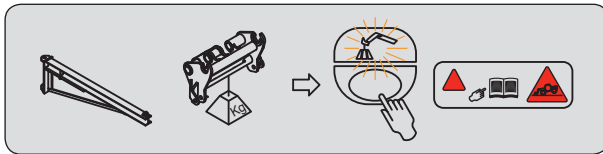
This device warns the operator of the lift truck's longitudinal stability limits. However, lateral stability can reduce the load chart in the upper part, and this reduction is not detected by the device.

Depending on the type of work required, the longitudinal stability limiter and warning device allows the operator to operate the lift truck in complete safety.



"HANDLING" MODE (use with forks)


By default, the device is in "HANDLING" MODE each time the lift truck is started.



"SUSPENDED LOAD" MODE (use with hoist) (offering a higher margin of error)

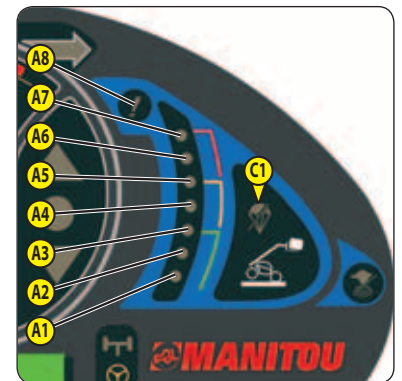
Place the lift truck in the transport position.



- Hold down the  button, the "SUSPENDED LOAD" MODE is confirmed by a beep and the lighting of the indicator lamp. Hydraulic inclination movements are neutralised, as well as the lifting movement when the longitudinal limit is reached (indicator lamp A8 lit).
- Press this button again or switch off the ignition with the ignition key to return to "HANDLING" MODE.

A - VISUAL ALARMS

- A1 - A2 - A3: There is a significant reserve of longitudinal stability.
- A4 - A5: The lift truck is approaching the limit of longitudinal stability, move with care.
- A6: The lift truck is close to the limit for longitudinal stability. Drive carefully.
- A7: The lift truck is very close to the limit of longitudinal stability. Maneuver with extreme caution.
- A8: The lift truck is at the authorised limit of longitudinal stability.



B - HYDRAULIC MOVEMENT CUT-OFF

NOTE: Cut-off may be preceded by an automatic slowing of hydraulic movement.

"HANDLING" MODE

- A8: All "AGGRAVATING" hydraulic movements are cut-off. Only perform de-aggravating hydraulic movements in the following order: retract and raise the boom.

"SUSPENDED LOAD" MODE

- A8: All "AGGRAVATING" and boom raising hydraulic movements are cut-off. Only the boom retraction hydraulic movement is available.

27 - LEVEL INDICATORS

A - TILT INDICATOR

MT 1135 H ST3B / MT 1335 H ST3B

When the two marks are aligned, the chassis is parallel with the front axle.

B - SPIRIT LEVEL

Enables the operator to check that the lift truck is in the horizontal position.



28 - DOOR OPEN LEVER

29 - DOOR CLOSE HANDLE

30 - WINDOW REGULATOR SWITCH

31 - SIDE STORAGE SPACE

32 - CEILING LIGHT

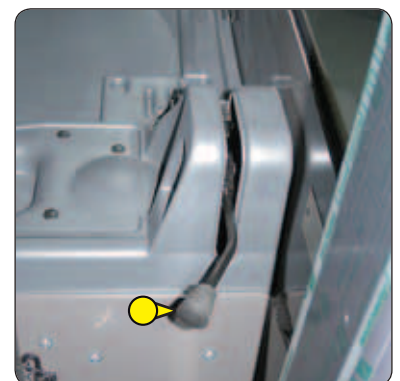
33 - HANDLE FOR REAR WINDOW OPENING

EMERGENCY EXIT

- Use the rear window as an emergency exit, if it is impossible to leave the cab by the door.



34 - HANDLE FOR REAR WINDOW CLOSING

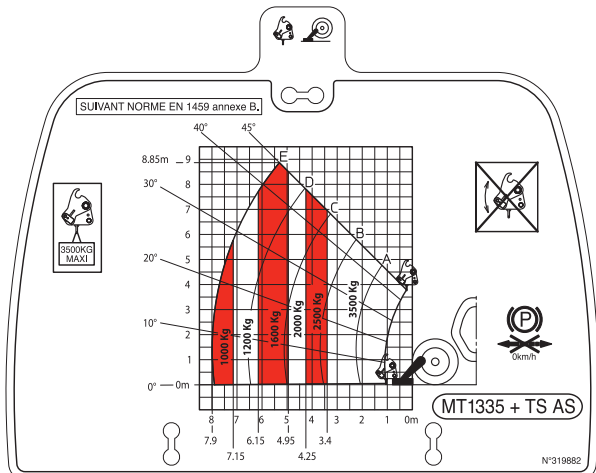
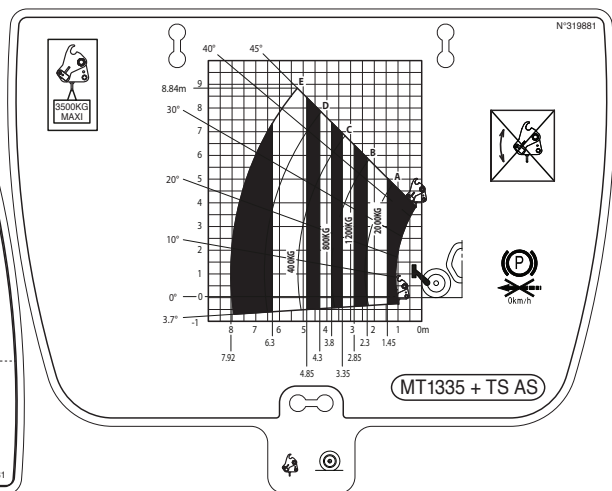
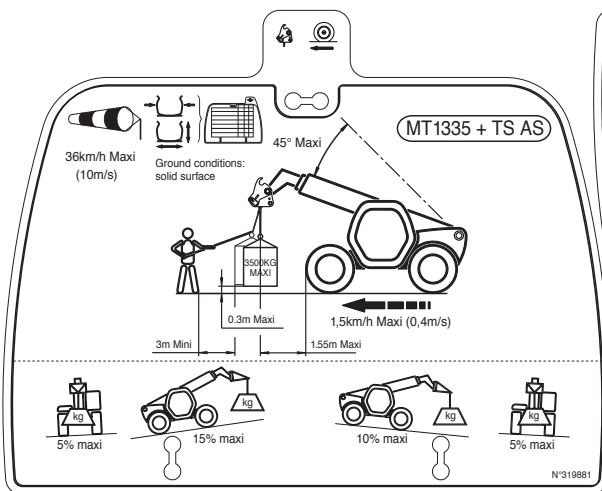
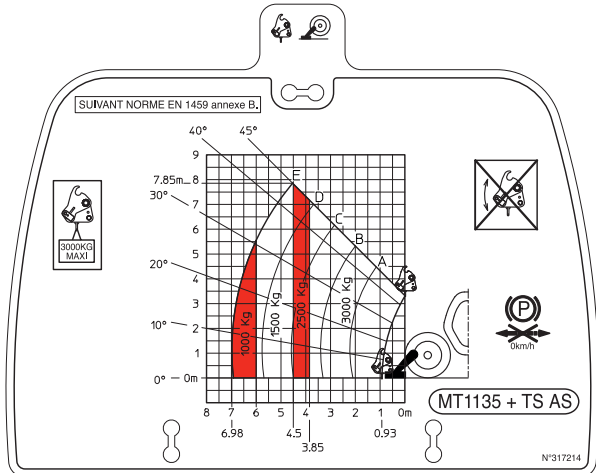
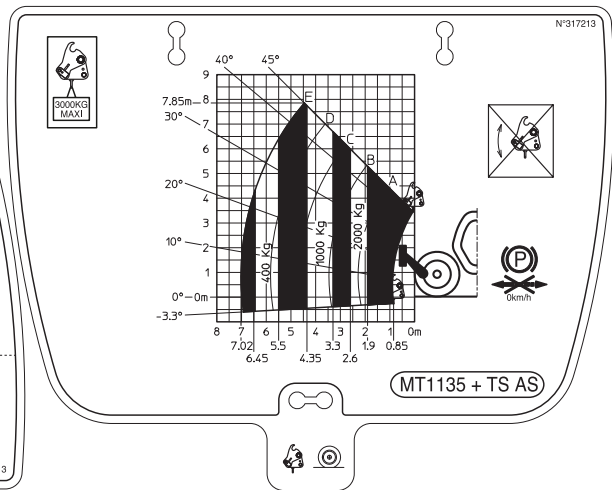
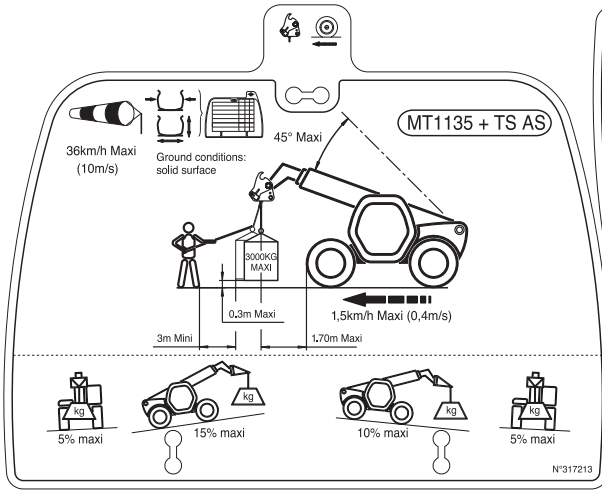


35 - STEERING WHEEL ADJUSTMENT LEVER

This handle enables the angle and height of the steering wheel to be adjusted.

- Pull the knob backwards.
- Adjust the steering wheel to the desired position.
- Push the knob back to lock the steering wheel in position.





A = ADJUST, C = CHECK, G = GREASE, N = CLEAN, P = BLEED, R = REPLACE, V = DRAIN		PAGE	(1)	DAILY OR EVERY 10 HOURS OF SERVICE	EVERY 50 HOURS OF SERVICE	EVERY 250 HOURS OF SERVICE	EVERY 500 HOURS OF SERVICE OR EVERY YEAR	EVERY 1000 HOURS OF SERVICE OR EVERY TWO YEARS	EVERY 2000 HOURS OF SERVICE OR EVERY TWO YEARS	EVERY 3000 HOURS OF SERVICE	EVERY 4000 HOURS OF SERVICE	OCCASIONALLY
- Hydraulic oil tank									N (3)			
BRAKE												
- Brake oil level		3-26	C		C							
- Brake oil								V (3)				
- Brake system								P (3)				
- Brake system pressure								C (3)				
- Brake								A (3)				
STEERING												
- Steering									C (3)			
- Steering swivel joints											C (3)	
CAB												
- Windscreen washer liquid level		3-17	C		C							
- Cab ventilation filters		3-17/19	R		N	R						
- Condenser core (Air conditioning OPTION)		3-17	C/N		C/N							
- Seat belt		3-28						C				
- Condition of the rear view mirrors								C (3)				
- Structure								C (3)				
- Air conditioning (OPTION)		3-31							N/C			
ELECTRICITY												
- Longitudinal stability limiter and warning device		3-12/36	C	C								XXX
- Condition of wiring harness and cables								C (3)				
- Lights and signals								C (3)				
- Warning indicators								C (3)				
- Front headlights		3-37										A
- Battery failure		3-37										R
FRONT AXLE												
- Front wheel reduction gear pivots		3-14	G		G							G/C (3)
- Front axle oscillation MT 1135 ST3B / MT 1335 ST3B		3-14	G		G				G/C (3)			
- Front axle differential oil level		3-19				C						
- Front wheels reduction gear oil level		3-19				C						
- Front axle differential oil		3-22	V				V					
- Front wheel reduction gear oil		3-28	V					V				
- Wear of front axle brake discs												C (3)
- Front wheel reduction gear universal joint												C (3)
- Front wheel reduction gear clearance												C (3)
REAR AXLE												
- Rear wheel reduction gear pivots		3-14	G		G							G/C (3)
- Rear axle oscillation		3-14	G		G				G/C (3)			
- Rear axle differential oil level		3-19				C						
- Rear wheel reduction gear oil level		3-19				C						
- Rear axle differential oil		3-28	V					V				
- Rear wheel reduction gear oil		3-28	V					V				
- Wearing of rear axle brake discs												C (3)
- Rear wheel reduction gear universal joint												C (3)
- Rear wheels reduction gear clearance												C (3)
CHASSIS												
- Tilting corrector MT 1135 ST3B / MT 1335 ST3B		3-14	G		G							
- Stabilisers MT 1135 ST3B / MT 1335 ST3B		3-14	G		G							
- Structure								C (3)				
- Bearings and articulation rings									C (3)			
ATTACHMENTS												
- Single side-shift carriage (TSDL) (OPTION)		3-14	G		G							
- Forks wear			C				C (3)					
- Attachment carriage								C (3)				
- Condition of attachments								C (3)				
LIFT TRUCK												
- Tow the lift truck		3-38										XXX
- Sling the lift truck		3-39										XXX
- Transport the lift truck on a platform		3-40										XXX

C3 - CAB VENTILATION FILTERS

CHANGE

EXTERNAL CAB VENTILATION FILTER

- Remove protective casing 1 using the ignition key.
- Lift out cab ventilation filter 2 and replace it with a new one (see: 3 - MAINTENANCE: FILTERS, CARTRIDGES AND BELTS).
- Refit the protective casing.



INTERNAL CAB VENTILATION FILTER

- Remove the protective grid 3.
- Lift out cab ventilation filter 4 and replace it with a new one (see: 3 - MAINTENANCE: FILTERS, CARTRIDGES AND BELTS).
- Refit the protective grid.

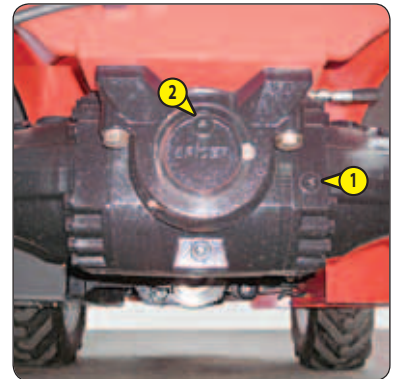


C4 - FRONT AND REAR AXLE DIFFERENTIAL OIL LEVEL

CHECK

Place the lift truck on level ground with the engine stopped.

- Remove the level plug 1; the oil should be flush with the edge of the hole.
- If necessary, add oil (see: 3 - MAINTENANCE: LUBRICANTS AND FUEL) through the filler port 2.
- Refit and tighten the level plug 1 (tightening torque 34 to 49 N.m).



C5 - FRONT AND REAR WHEEL REDUCTION GEAR OIL LEVEL

CHECK

Place the lift truck on level ground with the engine stopped.

- Check the level on each wheel reduction gear.
- Place level plug 1 in a horizontal position.
- Remove the level plug; the oil should be flush with the edge of the opening.
- If necessary, add oil (see: 3 - MAINTENANCE: LUBRICANTS AND FUEL) through the same opening.
- Refit and tighten the level plug (tightening torque 34 to 49 N.m).



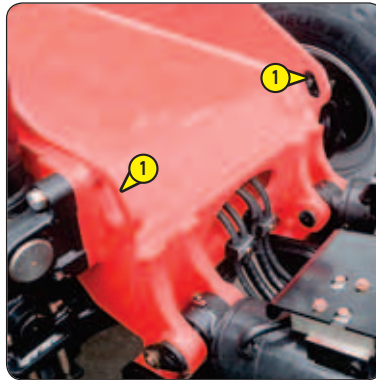
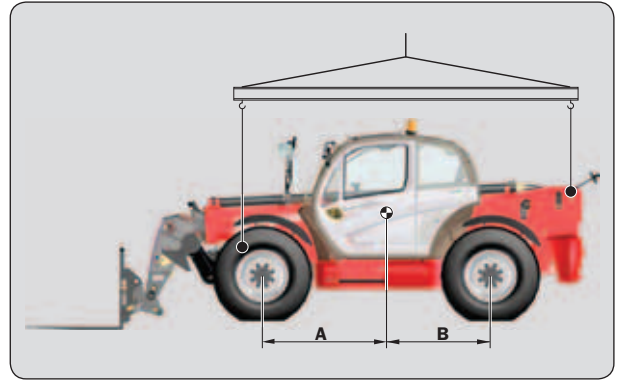
H8 – LIFT TRUCK

SLINGING

- Take into account the position of the lift truck centre of gravity for lifting.

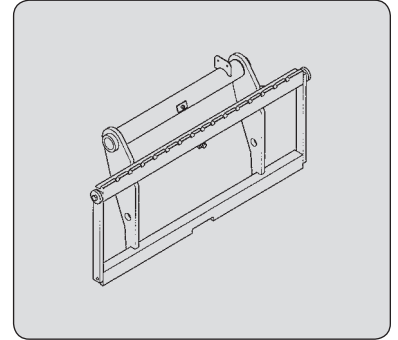
A = 1520 mm	B = 1360 mm	MT 835 H ST3B
A = 1380	B = 1500 mm	MT 1135 H ST3B
A = 1455 mm	B = 1425 mm	MT 1335 H ST3B

- Place the hooks in the fastening points 1 provided.



STANDARDISED TILTING FORK CARRIAGE

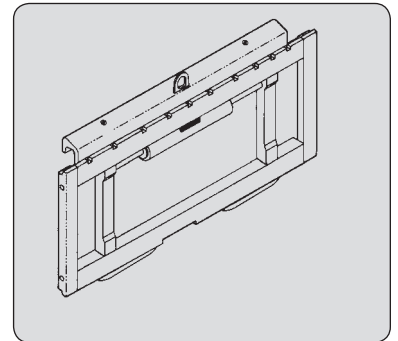
	PFB 35 N MT-1260 S2	PFB 35 N MT-1470 S2	PFB 35 N MT-1580 S2
PART NUMBER	653744	653745	653746
Rated capacity	3500 kg	3500 kg	3500 kg
Width	1260 mm	1470 mm	1580 mm
Weight	95 kg	120 kg	125 kg



STANDARDISED SIDE-SHIFT CARRIAGE

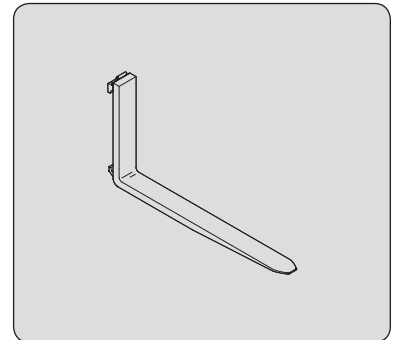
Use is prohibited with the optional single side-shift carriage (TSDL).

	TDL 3T5 L1260 FEM3	TDL 5T L1470 FEM3	TDL 5T L1580 FEM3
PART NUMBER	751375	751376	751377
Rated capacity	3500 kg	5000 kg	5000 kg
Side-shift	2x100 mm	2x100 mm	2x100 mm
Width	1260 mm	1470 mm	1580 mm
Weight	79 kg	167 kg	177 kg



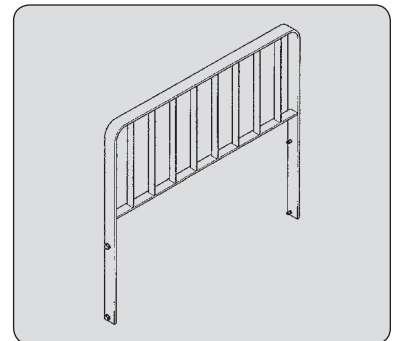
STANDARDISED FORK

PART NUMBER	415618
Section	125x45x1200 mm
Weight	72 kg



LOAD BACK REST

	556008	555325	556010
Width	1260 mm	1470 mm	1580 mm
Weight	39 kg	41 kg	42 kg



CLICK HERE TO **DOWNLOAD** THE COMPLETE MANUAL

- Thank you very much for reading the preview of the manual.
- You can download the complete manual from: www.heydownloads.com by clicking the link below



- Please note: If there is no response to CLICKING the link, please download this PDF first and then click on it.

CLICK HERE TO **DOWNLOAD** THE COMPLETE MANUAL