



Operator's Manual

Serial number range

Z-33/18
DC Power

From Z331815M-101
to Z331816M- 1299

From Z3318M-1300

ANSI/CSA
North America
South America
Asia

with
Maintenance
Information

Original Instructions
First Edition
Second Printing
Part No. 1257144GT

CLICK HERE TO **DOWNLOAD** THE COMPLETE MANUAL

- Thank you very much for reading the preview of the manual.
- You can download the complete manual from: www.heydownloads.com by clicking the link below



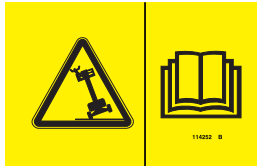
- Please note: If there is no response to CLICKING the link, please download this PDF first and then click on it.

CLICK HERE TO **DOWNLOAD** THE COMPLETE MANUAL

General Safety

Safety Signs and Locations

114252



133067



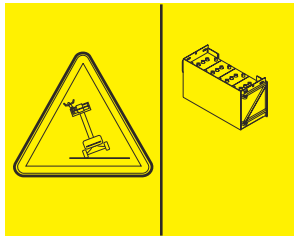
114334



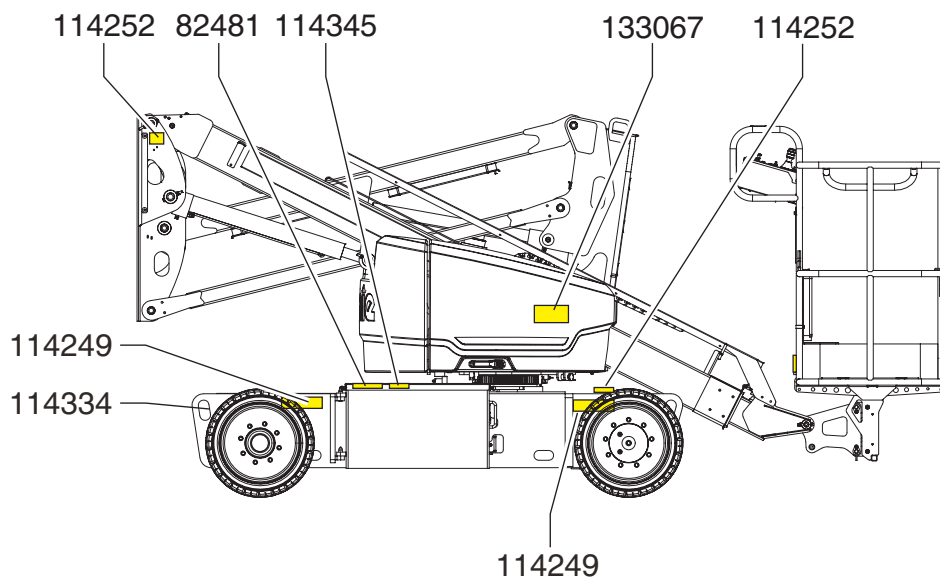
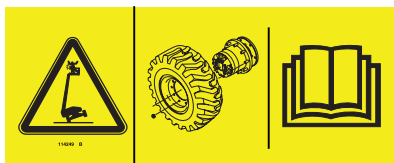
82481



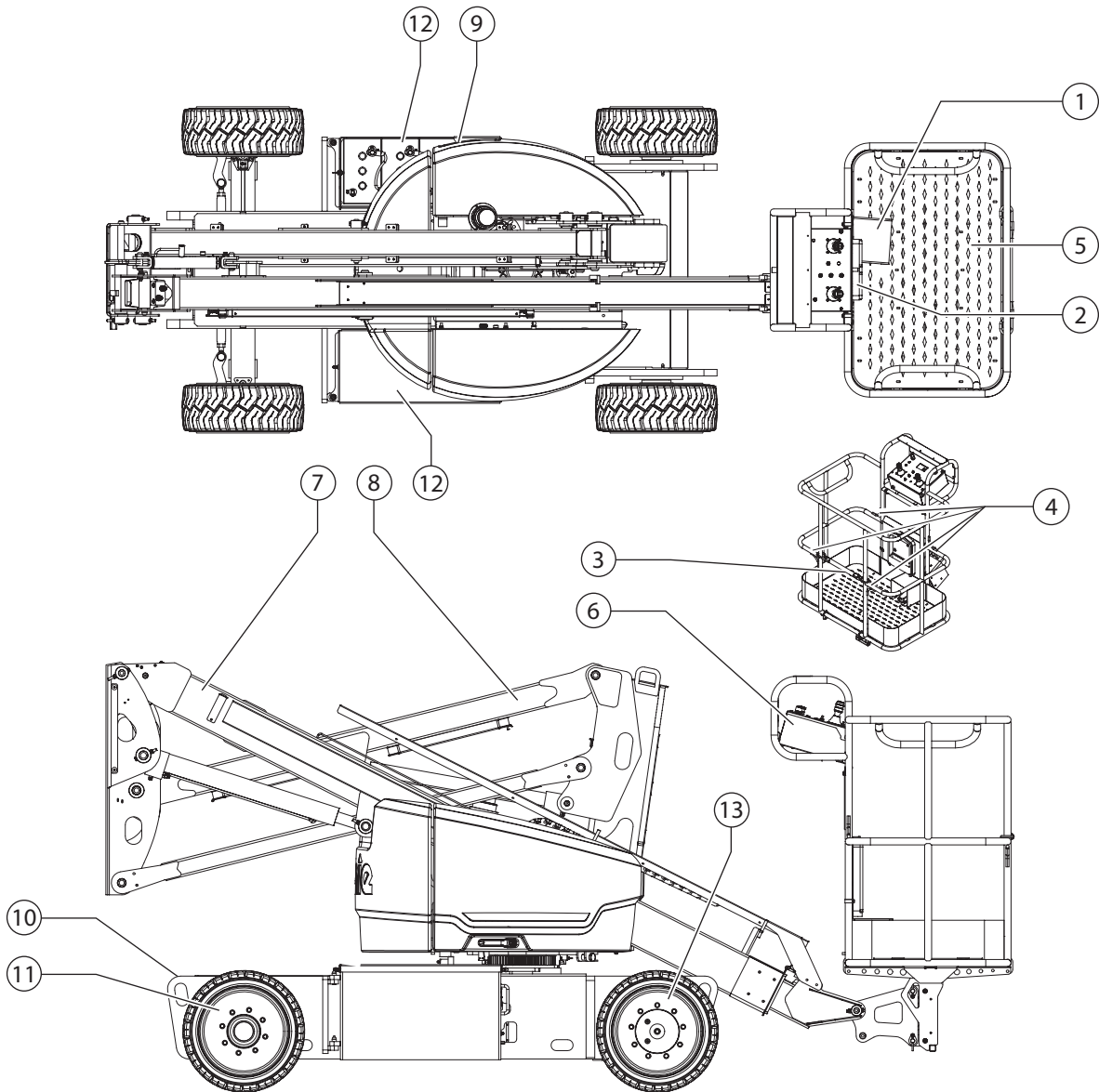
114345



114249



Legend



- | | |
|----------------------------|-------------------------------------|
| 1 Foot switch | 8 Secondary boom |
| 2 Manual storage container | 9 Ground controls |
| 3 Sliding mid-rail | 10 Power to charger (between tires) |
| 4 Lanyard anchorage point | 11 Steer tire |
| 5 Platform | 12 Battery box |
| 6 Platform controls | 13 Non-steer tire |
| 7 Primary boom | |

Inspections

At the Platform Controls

- 14 Turn the key switch to platform control.
 - 15 Pull out in the platform red Emergency Stop button to the on position.
- ⦿ Result: SYSTEM READY will appear on the LCD display screen.

Test Emergency Stop

- 16 Push in the platform red Emergency Stop button to the off position.
- ⦿ Result: The LCD display screen will be blank.
- 17 Test each machine function.
- ⦿ Result: All functions should not operate.
- 18 Pull out the red Emergency Stop button.

Test the Horn

- 19 Press the horn button.
- ⦿ Result: The horn should sound.

Test the Foot Switch

- 20 Do not press down the foot switch and test each machine function.
- ⦿ Result: No functions should operate.

Test Machine Functions

- 21 Press down the foot switch.
 - 22 Activate each machine function control handle or toggle switch.
- ⦿ Result: All boom and platform functions should operate through a full cycle. The descent alarm should sound while the boom is lowering.

Test the Steering

- 23 Press down the foot switch.
 - 24 Press the thumb rocker switch on top of the drive control handle in the direction indicated by the blue triangle on the control panel.
- ⦿ Result: The steer wheels should turn in the direction that the blue triangles point on the drive chassis.
- 25 Press the thumb rocker switch in the direction indicated by the yellow triangle on the control panel.
- ⦿ Result: The steer wheels should turn in the direction that the yellow triangles point on the drive chassis.

Operating Instructions

Operation from Platform

- 1 Turn the key switch to platform control.
- 2 Pull out both ground and platform red Emergency Stop buttons to the on position.

To Position Platform

- 1 Set the boom function speed controller to the desired speed.

Note: Drive and steer functions are not affected by the boom function speed controller.

- 2 Press down the foot switch.
- 3 Slowly move the appropriate function control handle or toggle switch according to the markings on the control panel.

To Steer

- 1 Press down the foot switch.
- 2 Turn the steer wheels with the thumb rocker switch located on top of the drive control handle.

Use the color-coded direction arrows on the platform controls and the drive chassis to identify the direction the wheels will turn.

To Drive

- 1 Press down the foot switch.
- 2 Increase speed: Slowly move the drive control handle off center.

Decrease speed: Slowly move the drive control handle toward center.

Stop: Return the drive control handle to center or release the foot switch.

Use the color-coded direction arrows on the platform controls and the drive chassis to identify the direction the machine will travel.

Machine travel speed is restricted when the booms are raised or extended.

Driving on a slope

Determine the uphill, downhill and side slope ratings for the machine and determine the slope grade.



Maximum slope rating, platform downhill (gradeability):

30% (17°)



Maximum slope rating, platform uphill:

20% (11°)



Maximum side slope rating:

25% (14°)

Note: Slope rating is subject to ground conditions and adequate traction.

Be sure the boom is below horizontal and the platform is between the circle-end wheels.

CLICK HERE TO **DOWNLOAD** THE COMPLETE MANUAL

- Thank you very much for reading the preview of the manual.
- You can download the complete manual from: www.heydownloads.com by clicking the link below



- Please note: If there is no response to CLICKING the link, please download this PDF first and then click on it.

CLICK HERE TO **DOWNLOAD** THE COMPLETE MANUAL