



# ***Operator's Manual***

Serial number range

***GTH-5519***

From GTH5516M-4511  
To GTH5516M-5337

**Tier 4 Interim**  
**Tier 4 Final**

**Original Instructions**  
**Second Edition**  
**First Printing**  
**November 2015**  
**Part No. 57.0009.0619**

CLICK HERE TO **DOWNLOAD** THE COMPLETE MANUAL

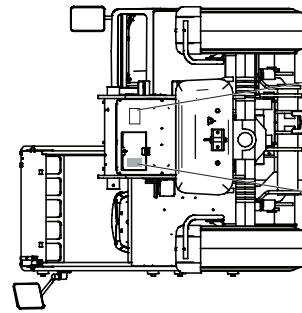
- Thank you very much for reading the preview of the manual.
- You can download the complete manual from: [www.heydownloads.com](http://www.heydownloads.com) by clicking the link below



- Please note: If there is no response to CLICKING the link, please download this PDF first and then click on it.

CLICK HERE TO **DOWNLOAD** THE COMPLETE MANUAL

# General Safety for Tier 4 Final



237598

**WARNING**

**Crush Hazard**  
Contact between wheel and chassis can result in death or serious injury.

Stay clear of machine during operation.

**DANGER**

**Crush Hazard**  
Contact with falling load can result in death or serious injury.

Stay clear of raised boom or load.

**DANGER**

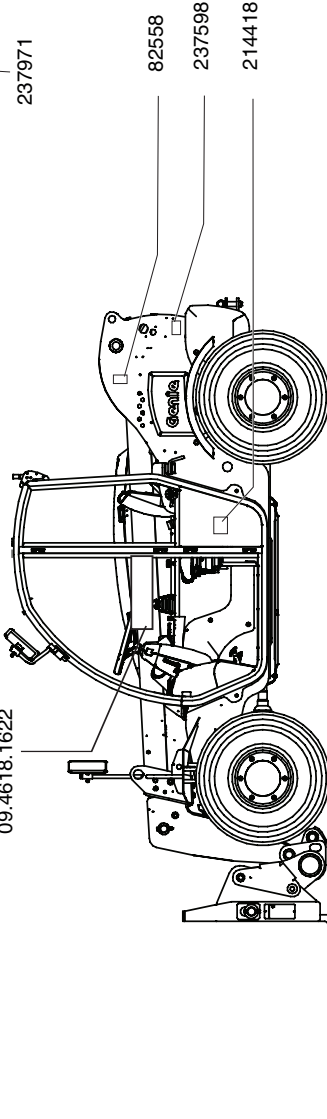
**Explosion/Burn Hazard**  
Fuel and fumes can explode and burn, resulting in death or serious injury.

No smoking.  
Keep all open flames and sparks away.  
Stop engine before adding fuel.

237971 237598

09.4618.1622

82558



82558

237598

214418

**WARNING**

**Injection Hazard**  
High pressure can penetrate skin, causing serious injury.

Relieve pressure before disconnecting hoses. Do not use compressed air to clean your face or clothes. Use a piece of cardboard or paper to search for leaks. Do not use compressed air to clean your face. Flair attached to skin must be surgically removed within a few hours by a doctor familiar with the type of injury or amputation involved.

<p><b>DANGER</b></p> <p><b>Electrocution Hazard</b> Contact with electric power lines will result in death or serious injury.</p> <p>Maximum clearance listed: 0 ft 0 in / 0 m 15 ft 4 in / 4.6 m 25 ft 7 in / 7.8 m 30 ft 0 in / 9.1 m</p> <p>Before operating electric power line tower to disconnect, move or install power lines.</p>	<p><b>WARNING</b></p> <p><b>Crush Hazard</b> Contact with boom or falling load can result in death or serious injury.</p> <p>Do not operate machine when people are under or near extended boom.</p>
<p><b>WARNING</b></p> <p><b>Tip-over Hazard</b> Overturning this machine can result in death or serious injury.</p> <p>Never exceed rated lift capacity. Follow the machine load chart. Do not operate this machine on uneven or soft ground. Limit travel speed according to the ground surface conditions, slopes and any other factors that may affect machine stability. Read and understand operator's manual.</p>	<p><b>WARNING</b></p> <p><b>Crush Hazard</b> Contact with boom or falling load can result in death or serious injury.</p> <p>Always keep both the boom at or below horizontal.</p>
<p><b>WARNING</b></p> <p><b>Tip-over Hazard</b> Overturning this machine can result in death or serious injury.</p> <p>Read and understand operator's manual.</p>	<p><b>WARNING</b></p> <p><b>Crush Hazard</b> Contact with boom or falling load can result in death or serious injury.</p>
<p><b>WARNING</b></p> <p><b>Crush Hazard</b> Machine rollover can result in death or serious injury.</p> <p>Always fasten seat belt. Keep all body parts inside operator's cab at all times.</p>	<p><b>WARNING</b></p> <p><b>Crush Hazard</b> Contact with boom or falling load can result in death or serious injury.</p>
<p><b>WARNING</b></p> <p><b>Crush Hazard</b> Contact between wheel and chassis can result in death or serious injury.</p> <p>Stay clear of machine during operation.</p>	<p><b>WARNING</b></p> <p><b>Crush Hazard</b> Contact with falling load can result in death or serious injury.</p> <p>Stay clear of raised boom or load.</p>
<p><b>WARNING</b></p> <p><b>Crush Hazard</b> Contact with falling load can result in death or serious injury.</p> <p>Stay clear of raised boom or load.</p>	<p><b>WARNING</b></p> <p><b>Crush Hazard</b> Contact with falling load can result in death or serious injury.</p> <p>Stay clear of raised boom or load.</p>

## Controls

- 1 **Steering wheel**


Turn the steering wheel to the right to turn the front wheels to the right. Turn the steering wheel to the left to turn the front wheels to the left.
- 2 **Horn button**

Press this button and the horn will sound. Release the button and the horn will stop.
- 3 **Heater and air conditioning controls (if equipped)**
- 4 **Turn signal lever (if equipped)**

Move the lever down to activate the right turn signal. Move the lever up to activate the left turn signal.
- 5 **Steer select switch**

Rotate the steer selector to the right side to select four-wheel steer. Rotate the steer selector to the middle position to select two-wheel steer. Rotate the steer selector to the left to select crab steer.
- 6 **Parking brake switch**

Push the top of the rocker switch to turn the parking brake off. Push the bottom of the switch to turn the parking brake on.
- 7 **Ignition switch**

Turn the key to the  position and hold until the glow plugs preheating indicator light turns off; when released, key springs back to pos. I automatically.
- 8 **Instrument panel**
- 9 **Control handle**

Pull the control handle back and the boom will raise. Push the control handle forward and the boom will lower. Push the control handle to the right and the boom will extend. Pull the control handle to the left and the boom will retract. Hold down the yellow thumb switch and pull the control handle back and the forks will tilt up. Hold down the yellow thumb switch and push the control handle forward and the forks will tilt down. Hold the red thumb switch and push the control handle forward to lock the attachment. Hold the red thumb switch and push the control handle backward to unlock the attachment.
- 10 **Road lights switch (if equipped)**
- 11 **Continuous oil flow switch**

Push the switch to delivery or to return the oil flow from the used attachment.
- 12 **Accelerator pedal**
- 13 **Brake pedal**
- 14 **Service brake oil reservoir**
- 15 **Windshield washer switch (if equipped)**

Push and hold the switch to turn the washer on. Release the switch to turn the washer off.
- 16 **Work lights switch (if equipped)**

Push the center of the rocker switch to turn the cab & boom working lights on. Push the bottom of the switch to turn the cab, boom and rear working lights on. Push the top of the rocker switch to turn them off.




---

## Do Not Operate Unless:

- You learn and practice the principles of safe machine operation contained in this operator's manual.
  1. Avoid hazardous situations.
  - 2. Always perform a pre-operation inspection.**

**Know and understand the pre-operation inspection before going on to the next section.**
  3. Always perform function tests prior to use.
  4. Inspect the workplace.
  5. Only use the machine as it was intended.

## Workplace Inspection Fundamentals

The workplace inspection helps the operator determine if the workplace is suitable for safe machine operation. It should be performed by the operator prior to moving the machine to the workplace.

It is the operator's responsibility to read and remember the workplace hazards, then watch for and avoid them while moving, setting up and operating the machine.

# Inspections

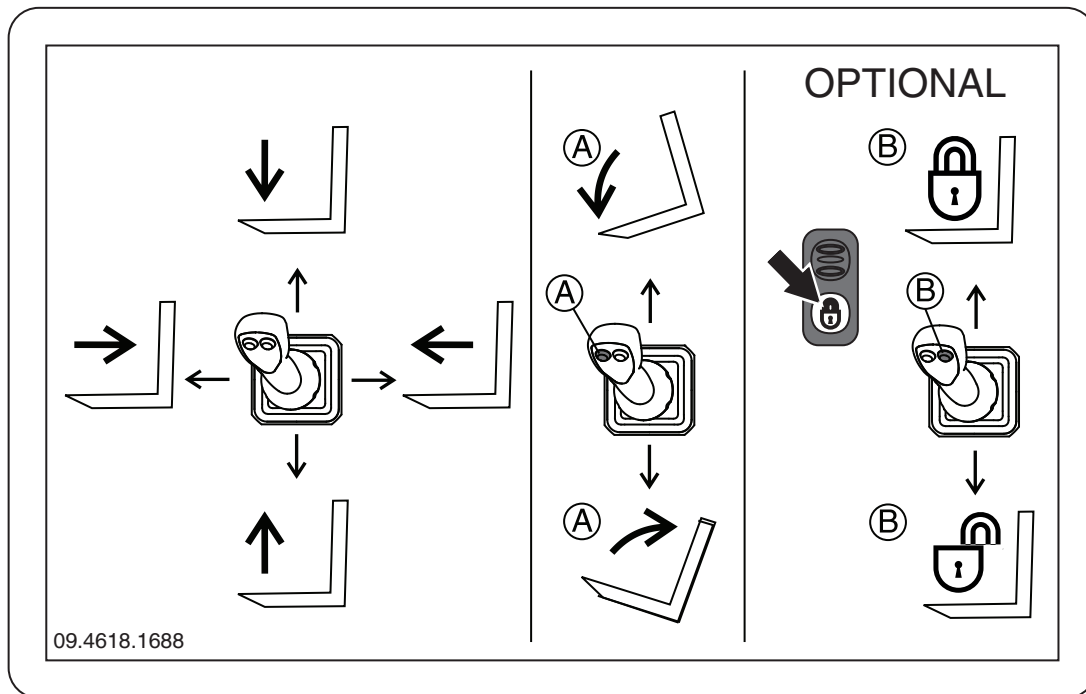
## Workplace Inspection Checklist

Be aware of and avoid the following hazardous situations:

- drop-offs or holes
- bumps, floor obstructions or debris
- sloped surfaces
- unstable or slippery surfaces
- overhead obstructions and high voltage conductors
- hazardous locations
- inadequate surface support to withstand all load forces imposed by the machine
- wind and weather conditions
- the presence of unauthorized personnel
- other possible unsafe conditions

# Operating Instructions

## Controller movements



Control handle only

Control handle only with yellow thumb switch (A)

OPTIONAL Control handle only with red thumb switch (B)

# Maintenance

## Check the Battery



Proper battery condition is essential to good machine performance and operational safety. Improper fluid levels or damaged cables and connections can result in component damage and hazardous conditions.

- ⚠ **Electrocution hazard.** Contact with hot or live circuits may result in death or serious injury. Remove all rings, watches and other jewelry.
  - ⚠ **Bodily injury hazard.** Batteries contain acid. Avoid spilling or contacting battery acid. Neutralize battery acid spills with baking soda and water.
- 1 Put on protective clothing and eye wear.
  - 2 Be sure that the battery cable connections are tight and free of corrosion.
  - 3 Be sure that the battery hold-down brackets are in place and secure.

Note: Adding terminal protectors and a corrosion preventative sealant will help eliminate the corrosion on the battery terminals and cables.

## Scheduled Maintenance

Maintenance performed quarterly, annually and every two years must be completed by a person trained and qualified to perform maintenance on this machine according to the procedures found in the service manual for this machine.

Machines that have been out of service for more than three months must receive the quarterly inspection before they are put back into service.

CLICK HERE TO **DOWNLOAD** THE COMPLETE MANUAL

- Thank you very much for reading the preview of the manual.
- You can download the complete manual from: [www.heydownloads.com](http://www.heydownloads.com) by clicking the link below



- Please note: If there is no response to CLICKING the link, please download this PDF first and then click on it.

CLICK HERE TO **DOWNLOAD** THE COMPLETE MANUAL