



A TEREX BRAND

Operator's Manual

Serial number range

GTH-4518 ER

From serial n.: 20112
To serial n.: 20300

GTH-4020 ER

From serial n.: 20118
To serial n.: 21643

GTH-6025 ER

From serial n.: 19309
To serial n.: 24410

With Maintenance
Information

Second Edition
First Printing
Part No. 57.0009.0404

CLICK HERE TO **DOWNLOAD** THE COMPLETE MANUAL

- Thank you very much for reading the preview of the manual.
- You can download the complete manual from: www.heydownloads.com by clicking the link below



- Please note: If there is no response to CLICKING the link, please download this PDF first and then click on it.

CLICK HERE TO **DOWNLOAD** THE COMPLETE MANUAL

Labels And Plates Applied On The Machine

Ref.	Decal	Code	Description	Qt.
9		09.4618.1048	Label - Stabilizer Max Pres. GTH-6025ER	4
		09.4618.1049	Label - Stabilizer Max Pres. GTH-4518ER GTH-4020ER	4
10		09.4618.0776	Label - Upper Door Internal Unlock System	1
11		09.4618.1371	Control lever decal	1
12		09.4618.0921	Label - Use limits close to electric power lines	1
13		09.4618.0933	Crush Hazard	4
14		09.4618.0922	Crush Hazard	7
15 16		09.4618.0243 09.4618.0241	Cosmetic - GENIE Logo in WHITE	2 1
17		09.4618.1335	Label - Engine Fuses & Relays Board for GTH-6025 ER	1

Safety precautions

- Do not lubricate, clean or adjust moving parts.
- Do not carry out operations manually when specific tools are provided for this purpose.
- Avoid the use of tools in bad condition or use in an improper way i.e. pliers instead of adjustable wrenches, etc.
- Applying loads in different points of the attachment holding plate is forbidden.
- When working, do not give instructions or signs to several people at the same time. Instructions and signs must be given by one person only.
- Always pay due attention to the instructions given by the foreman.
- Never distract the operator during working phases or crucial manoeuvres.
- Do not call an operator suddenly, if unnecessary.
- Do not frighten an operator or throw objects by any means.
- After work, never leave the machine under potentially dangerous conditions.
- Before any maintenance or repair work, remove the attachment.



Any intervention on the hydraulic circuit must be carried out by authorised personnel.

The hydraulic circuit of this machine is fitted with pressure accumulators. You and others could be seriously injured if accumulators are not completely depressurised.

For this purpose, shut the engine down and step on the brake pedal 8/10 times.



- Before carrying out operations on hydraulic lines under pressure or disconnecting hydraulic components, ensure the relevant line has been previously depressurised and does not contain any hot fluid.
- Do not empty catalytic mufflers or other vessels containing burning materials without taking the necessary precautions.
- After any maintenance or repair work, make sure that no tool, cloth or other object has been left within machine compartments, fitted with moving parts, or where suction and cooling air circulates.

■ MACHINE OPERATION hazards


Absolutely avoid the following work situations:


- Do not handle loads beyond the maximum capacity of the machine.
- Do not raise or extend the boom if the machine is not on a firm, level surface.
- Do not operate the machine in strong wind. Do not increase the surface area of the machine or forked load exposed to the wind. Increasing the area exposed to the wind will decrease machine stability.
- Use extreme caution and slow speeds when the machine is driven across uneven or unstable grounds, slippery surfaces or near trenches or drop-offs.
- Limit travel speed according to ground conditions, slopes, presence of personnel or other factors which may cause collision.
- Do not place or attach overhanging loads to any part of the machine.


Controls And Instruments

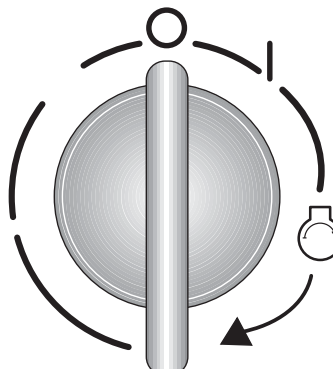
■ 20 _ Ignition Switch

Three-position switch:

 No circuit under voltage, key can be removed and engine is stopped.

 Circuits under voltage for engine start-up. Board controls and instruments are on. Wait until the warning light **6.2** signalling the glow plugs preheating goes off before proceeding with the engine starting.

 Engine start-up; when released, key springs back to pos. I automatically.

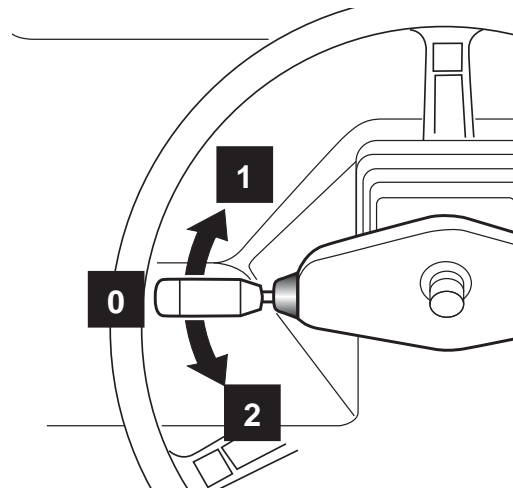


■ 2 _ Forward/Reverse Gear Selector Switch

The lever lets you select the forward or reverse speed. The lever must be pulled upwards before engaging the selected speed.

Three-position switch with lock in neutral position:

- 0 Neutral position; no gear engaged
- 1 Shift lever to pos. 1 to select the forward gear
- 2 Shift lever to pos. 2 to select the reverse gear

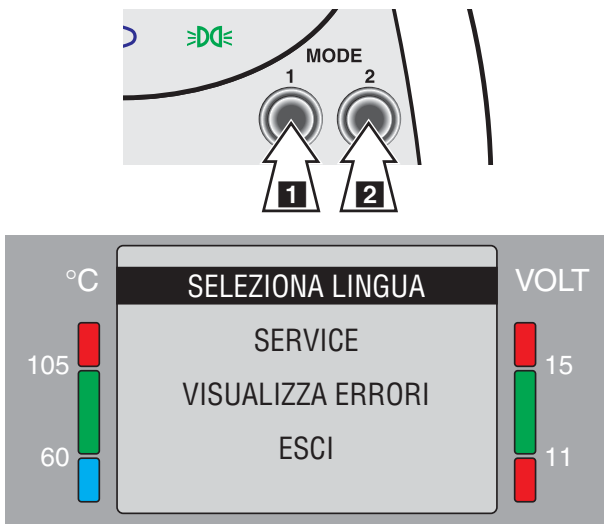


Controls And Instruments

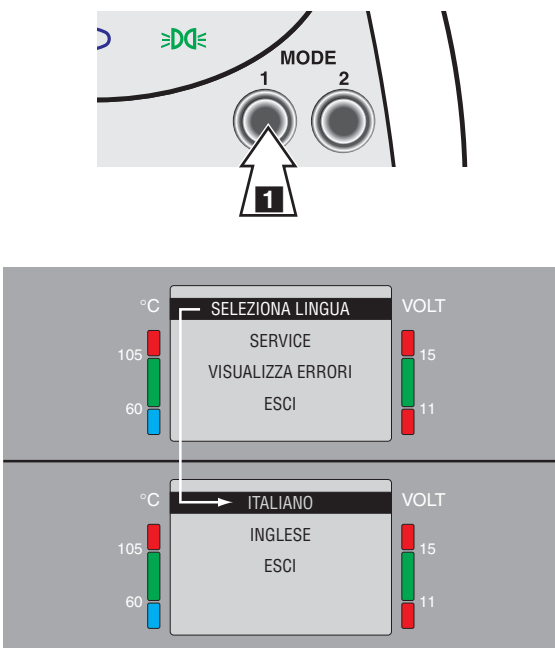
Use of menus and sub-menus

Use the two buttons **MODE 1** and **MODE 2** to gain access and scroll through menus and sub-menus.

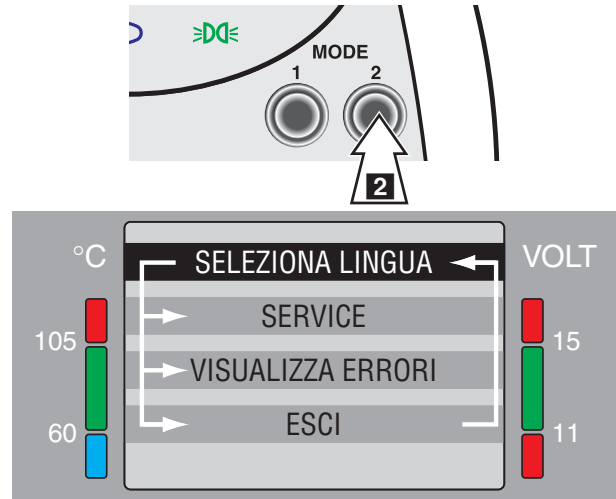
Press the two buttons **MODE 1** and **MODE 2** simultaneously to access to the menu.



Press button **MODE 1** to confirm any selection made.



Press button **MODE 2** to scroll through the menu lists (when the last item of the list is reached, the first item is displayed).

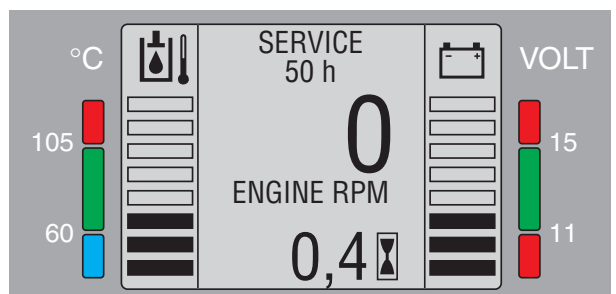


Quitting the menu

- Select **EXIT** using button **MODE 2**.



- Press button **MODE 1** to quit and display the home page.



Controls And Instruments

■ Pitching The Attachment Holding Frame Forward/Back

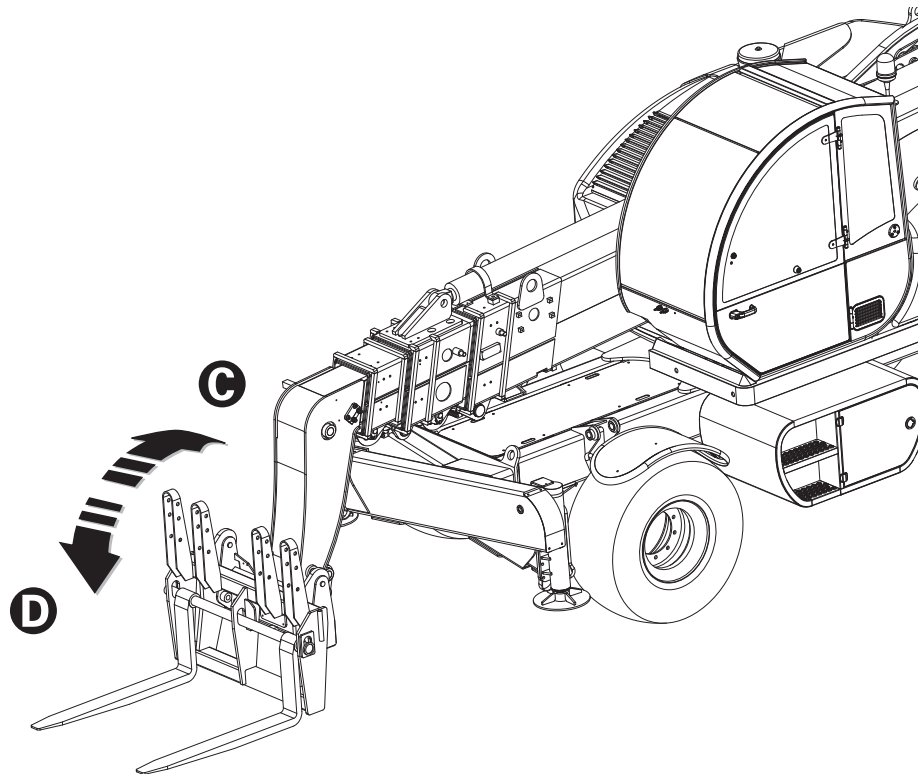
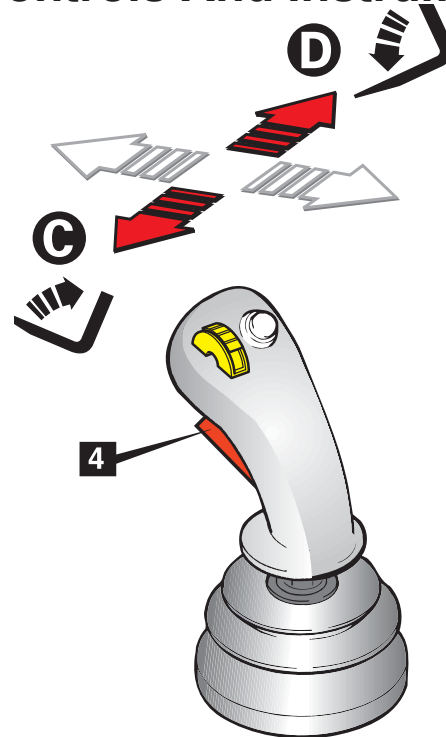
RIGHT JOYSTICK



Before operating the boom, make sure that nobody is within the working range of the machine.

To pitch forward/back the attachment holding frame:

- Set the control lever to central position and press button 4.
- Smoothly shift the lever to position **D** to pitch the holding plate forward; shift the lever to position **C** to pitch the plate back.



Inspection



Make sure:

- ☑ You learn and practice the principles of safe machine operation contained in this operator's manual.
 - 1 Avoid hazardous situations.
 - 2 **Always perform a pre-operation inspection.**

Know and understand the pre-operation inspection before going on to the next section.

- 3 Always perform function tests prior to use.
- 4 Inspect the workplace.
- 5 Only use the machine as it was intended.

Pre-operation Inspection Fundamentals

It is the responsibility of the operator to perform a pre-operation inspection and routine maintenance.

The pre-operation inspection is a visual inspection performed by the operator prior to each work shift. The inspection is designed to discover if anything is apparently wrong with a machine before the operator performs the function tests.

The pre-operation inspection also serves to determine if routine maintenance procedures are required. Only routine maintenance items specified in this manual may be performed by the operator.

Refer to the list on the next page and check each of the items.


If damage or any unauthorized variation from factory delivered condition is discovered, the machine must be tagged and removed from service.

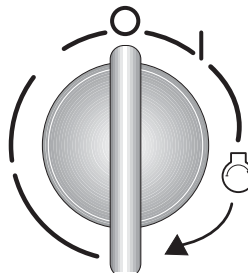
Repairs to the machine may only be made by a qualified service technician, according to the manufacturer's specifications. After repairs are completed, the operator must perform a pre-operation inspection again before going on to the function tests.

Scheduled maintenance inspections shall be performed by qualified service technicians, according to the manufacturer's specifications.

Operating Instructions

■ STARTING THE ENGINE

- Set the forward/back speed lever to neutral position.
- To start the engine, rotate the ignition switch to position , and release when the engine starts. If the engine does not start within 20 seconds, release the key and wait at least 2 minutes before attempting again.
- After the engine starting, slow down the rpm and wait some seconds before engaging a gear; this allows for a gradual warm up of the engine oil and a better lubrication.
- In case of engine jump-starting, remove the connecting cables (see following chapter).



■ JUMP-STARTING THE ENGINE

NOTICE

Do not start the engine using a quick charge booster to avoid any damage to the electronic boards.

DANGER

When jump-starting the engine through the battery of another machine, make sure that the two vehicles cannot collide to prevent formation of sparks. Batteries give off a flammable gas and sparks may burn it and cause an explosion

Do not smoke when checking the electrolyte level.

Keep any metal object like buckles, watch straps, etc. clear of the battery positive (+) terminal. These elements can short between the terminal and nearby metal work and the operator can get burned.

The booster supply must have the same rated voltage and output of the battery installed on the handler.

NOTICE

If the light indicators do not switch off/on when engine is running, immediately stop the machine and find and rectify the fault.

WARNING

Once it has been started, the engine continues to run even if you leave the driving place. DO NOT LEAVE THE DRIVING PLACE BEFORE HAVING SHUT THE ENGINE DOWN, LOWERED THE BOOM TO THE GROUND, TURNED THE SPEED SWITCH TO THE NEUTRAL POSITION AND ENGAGED THE PARKING BRAKE.



Engine can not be started if the speed switch is not in the neutral position.

To jump-start the engine:

- Turn any users off by the special control levers.
- Put the gear lever to neutral and engage the parking brake.
- Ensure the machine battery **A** is connected to the frame earth, the terminals are well tightened and the electrolyte level is regular.
- Connect the two batteries as shown in the figure. Connect first the positive terminals of the two batteries, then the negative terminal of the booster supply **B** to the machine frame earth.
- If the booster supply is installed on a second vehicle, make sure that the latter does not touch the handler. **To avoid damage to the electronic instruments of the machine, the engine of the machine where the booster supply is installed, must be stopped.**

Operating Instructions

■ USE OF THE MAN-PLATFORM

For the use of the man-platform, proceed as follows:

1. Couple the man-platform to the attachment holding frame.
2. Fully extend the stabilizers.
3. Completely lower the stabilizers and sway the machine; check the operation on the inclinometer **24** in the cab.
4. Unlock the rotation of the counter-frame/turntable.
5. Level the platform floor.



The platform floor cannot be levelled once the controls have been switched from the driving cabin to the platform. Before starting using the platform, make sure the floor is level.

6. Turn the ignition switch to **I** position.
7. Turn the cab/road/platform switch to the **"Platform"** position (the green LED comes on).
8. Remove the key from the cab/road/platform switch to use it for the platform controls.
9. Open the protection cover of the power socket on the boom and plug in the platform plug.
10. Enter the man-platform and insert the key, previously removed, in the controls switch.



If the platform controls remain disabled after the key insertion, check the correct position of the sensors controlling the attachments and stabilizers connecting pin.



For the use and maintenance of the man-platform, read the specific manual .

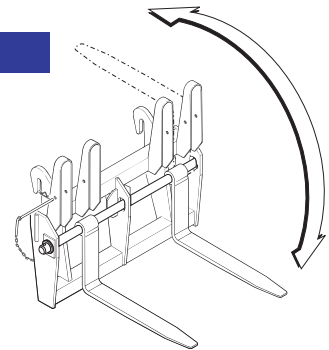
■ ROAD OR SITE TRANSFER

When travelling on public roads, strictly obey the local or national road traffic regulations. Besides, take into account the following general precautions:

- Align the rear wheels.
- Sway the machine.
- Cover the teeth of the conventional forks with the special guard; or withdraw the floating forks.

NOTICE

With the floating forks pitched back, do not move the fork pitching cylinder as the machine could suffer from damage.



- Retract boom and attachment to transfer position.
- Set the **Road/Jobsite/Platform** to **"ROAD"**.
- Make sure that lights, horn and turn signals are in working order.
- Engage the gear.
- The transfer speed of the vehicle will depend on the engine rpm and the position of the control lever.

NOTICE

Public road circulation is allowed only for transferring an unloaded machine. Do not use the machine to tow trailers.

Maintenance

Every 2000 working hours or yearly

Jobs to be done in addition to those above.

- 1 Change the engine coolant

Every 6000 hours or 5 years and, subsequently, every 2 years

Jobs to be done in addition to those above.

- 1 Check that the structure is intact paying a special attention to the welded supporting joints and the boom pins.

■ OIL CHANGE SCHEDULE

	Job	Operating hours *	Service interval *	Oil type
Engine	Oil level check	10	daily	SHELL RIMULA 15W-40 (API CH-4/CG-4/CF-4/CF; ACEA E3; MB228.3)
	First change	500	-	
	Subsequent changes	500	yearly	
Axes and power divider	Oil level check	250	monthly	TRACTORENAULT THFI 208 LF SAE 80W; API GL4 / FORD M2C 86B; MASSEY FERGU- SON M 1135
	First change	-	-	
	Subsequent changes	1000	yearly	
Hydraulic oil	Oil level check	10	daily	GAZPROMNEFT HYDRAULIC HDZ 46 (DIN 51524 part 3 HVLP, ASTM D6158 HV, SAE MS1004 MS)
	First change	-	-	
	Subsequent changes	1000	6 month	
Turntable rotation reduction gear	Oil level check	250	monthly	SHELL OMALA 150 DN 51 517-3 CLP, ISO 12295- 1 TYPE CKC, US STEEL 224, DAVID BROWN 51.53.101
	First change	-	-	
	Subsequent changes	1000	6 month	

* whichever occurs first.

Maintenance

■ OIL LEVEL IN THE POWER DIVIDER GEARBOX



To check the oil level in the power divider gearbox:

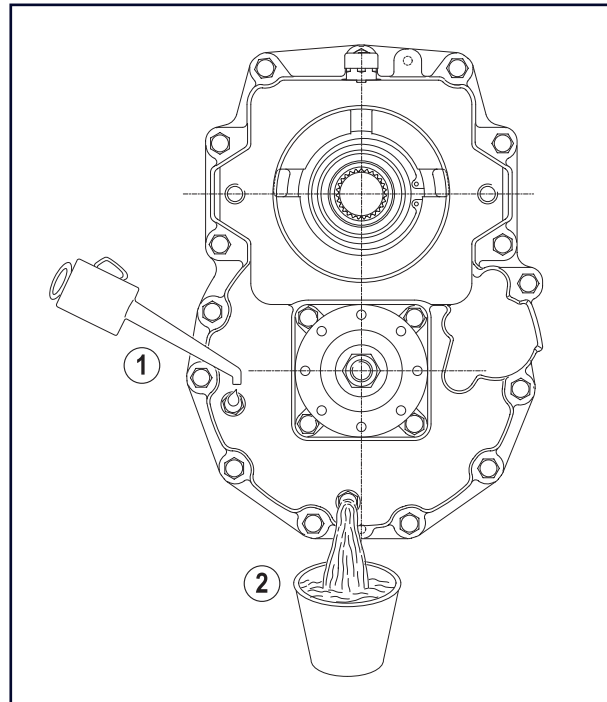
- Stop the machine on a level ground and make sure the parking brake is engaged.
- Clean level plug ① all around.
- Remove the plug and check if oil is level with the hole.
- When necessary, add new oil through plug ① until it is level with the hole.
- Refit and tighten the plug.

To change the oil:

- Place a container of suitable size under the drain plug.
- Remove the plug ①.
- Remove the drain plug ② and empty the power divider gearbox.
- Refit and tighten the drain plug ②.
- Pour in new oil through the filler ① placed at the top of the reduction gear of the power divider. Stop when oil is level with hole ①.
- Refit and tighten plug ①.

① **Filling plug**

② **Drain plug**



SERVICE INTERVAL

Running-in _____ **Within the first 10 hours**

Ordinary _____ **Every 250 hours**

CLICK HERE TO **DOWNLOAD** THE COMPLETE MANUAL

- Thank you very much for reading the preview of the manual.
- You can download the complete manual from: www.heydownloads.com by clicking the link below



- Please note: If there is no response to CLICKING the link, please download this PDF first and then click on it.

CLICK HERE TO **DOWNLOAD** THE COMPLETE MANUAL

Maintenance

■ Sensors on OUTRIGGERS

Each outrigger is equipped with two micro-switches and one position potentiometer.

- A** Outrigger extension potentiometer: It indicates the moment limiting system when a stabiliser is extended and adapts the stabilising area of the machine in a continuous way.
- B** This micro-switch senses when the outrigger is lowered. It indicates the condition of lowered outrigger and blocks the transmission when a outrigger is lowered to the ground.
- C** This micro-switch senses when the outrigger is extended. It indicates the conditions of extended stabiliser.

These three sensors, in conjunction with the moment limiter, determine the exact stabilising area instant after instant by adapting the max load that can be supported in each configuration.

■ Checking the limit switches of the outriggers (at every use)

To check the efficiency of the limit switches installed in the outriggers:

- Lower or raise all the outriggers.
- The display of the **MIDAC** moment limiter will change the scale of the admissible payloads accordingly.

Should that not be the case, contact the TEREXLIFT Technical Service.



If a limit switch is faulty or a lever is deformed, immediately replace the part.

■ Outrigger strain gauge (every 40 hours or whenever an anomalous capacity is noticed)

To verify the efficiency of the extensometer on the outriggers, follow the instructions below:

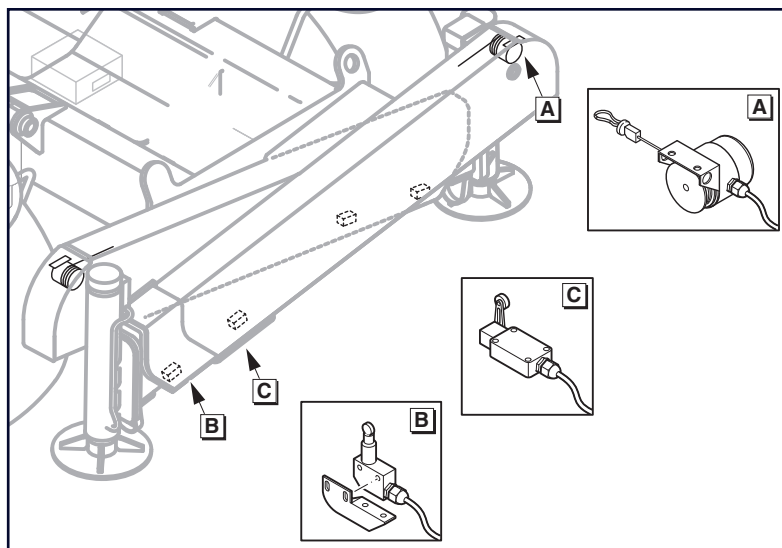
- Using an Allen wrench, unscrew the 4 fixing screws of the protection cover
- Remove the protection cover and visually check the wire for damage.

If the wire is damaged, address to GENIE Technical Service.



If the strain gauge gets damaged, the display will show an error message.

If the wire of the strain gauge is broken, the machine does not detect the extension of the arm of the outrigger (even when extended) and therefore the scale of the permissible payloads is not adapted accordingly.



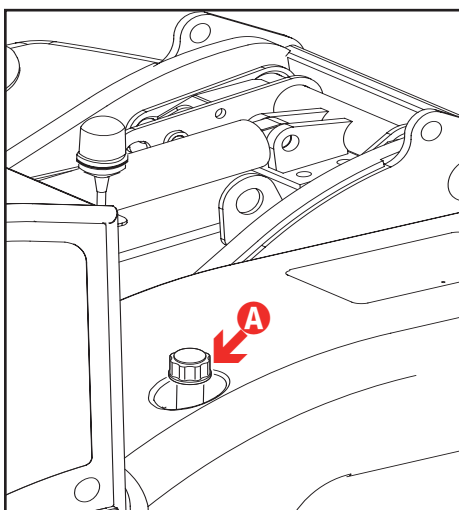
Maintenance

■ Fuel

Refuel through cap **A**. Use only Diesel fuel with less than 0.5% sulphur content, according to the specifications of the diesel engine operation handbook.

NOTICE

In cold climates (temperature under -20°C) use only Arctic type Diesel fuel, or oil-diesel fuel, or oil-diesel fuel mixtures. The composition of the latter can vary in relation to the ambient temperature up to max. 80% oil.



■ Grease

For the machine greasing, use:

Lithium-based Vanguard LIKO grease, type EP2	When greasing by pump.
Graphitized AGIP grease, type GR NG 3	When greasing by brush.
INTERFLON FIN GREASE LS 2	On the telescopic boom

NOTICE

Avoid mixing greases of different type or features and do not use greases of lower quality.

■ Engine coolant

It is advisable to use an antifreeze mixture (50% water-50% antifreeze). At the delivery, the machine is refilled with:

TEREX PRO COOL by VALVOLINE

The use of this product guarantees protection to the circuit for 3 years or 7000 hours without having to add any dry coolant additive.

TEREX PRO COOL Protection against boiling / freezing		
Product %	Freezing point	Boiling point
33	-17°C	123°C
40	-24°C	126°C
50	-36°C	128°C
70	-67°C	135°C

NOTICE

Use an antifreeze mixture in the proportions recommended by the manufacturer in relation to the ambient temperature of the jobsite.

Faults and Troubleshooting

■ “CUMMINS” ERROR MESSAGES DESCRIPTIONS

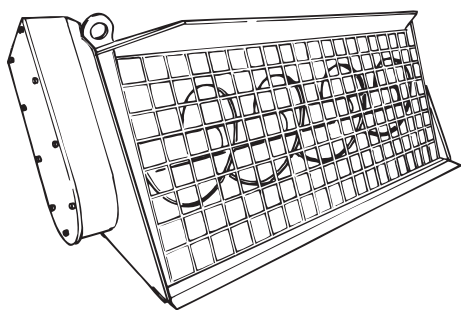
Fault Code	J1939 SPN	J1939 FMI	Lamp Color	J1939 SPN Description	Cummins Description
111	629	12	Red	Controller #1	Engine Control Module Critical internal failure - Bad intelligent Device or Component
115	612	2	Red	System Diagnostic Code # 2	Engine Speed/Position Sensor Circuit lost both of two signals from the magnetic pickup sensor - Data Erratic, Intermittent, or incorrect
122	102	3	Amber	Boost Pressure	Intake Manifold Pressure Sensor Circuit – Voltage Above Normal, or Shorted to High Source
123	102	4	Amber	Boost Pressure	Intake Manifold Pressure Sensor Circuit – Voltage Below Normal, or Shorted to Low Source
131	91	3	Red	Accelerator Pedal Position	Accelerator Pedal or Lever Position Sensor Circuit - Voltage Above Normal, or Shorted to High Source
132	91	4	Red	Accelerator Pedal Position	Accelerator Pedal or Lever Position Sensor Circuit - Voltage Below Normal, or Shorted to Low Source
133	974	3	Red	Remote Accelerator	Remote Accelerator Pedal or Lever Position Sensor Circuit – Voltage Above Normal, or Shorted to High Source
134	974	4	Red	Remote Accelerator	Remote Accelerator Pedal or Lever Position Sensor Circuit – Voltage Below Normal, or Shorted to Low Source
135	100	3	Amber	Engine Oil Pressure	Oil Pressure Sensor Circuit - Voltage Above Normal, or Shorted to High Source
141	100	4	Amber	Engine Oil Pressure	Oil Pressure Sensor Circuit - Voltage Below Normal, or Shorted to Low Source
143	100	18	Amber	Engine Oil Pressure	Oil Pressure Low – Data Valid but Below Normal Operational Range - Moderately Severe Level
144	110	3	Amber	Engine Coolant Temperature	Coolant Temperature Sensor Circuit – Voltage Above Normal, or Shorted to High Source
145	110	4	Amber	Engine Coolant Temperature	Coolant Temperature Sensor Circuit – Voltage Below Normal, or Shorted to Low Source
146	110	16	Amber	Engine Coolant Temperature	Coolant Temperature High - Data Valid but Above Normal Operational Range - Moderately Severe Level
147	91	1	Red	Accelerator Pedal Position	Accelerator Pedal or Lever Position Sensor Circuit – Abnormal Frequency, Pulse Width, or Period
148	91	0	Red	Accelerator Pedal Position	Accelerator Pedal or Lever Position Sensor Circuit – Abnormal Frequency, Pulse Width, or Period
151	110	0	Red	Engine Coolant Temperature	Coolant Temperature Low - Data Valid but Above Normal Operational Range - Most Severe Level
153	105	3	Amber	Intake Manifold #1 Temp	Intake Manifold Air Temperature Sensor Circuit - Voltage Above Normal, or Shorted to High Source
154	105	4	Amber	Intake Manifold #1 Temp	Intake Manifold Air Temperature Sensor Circuit - Voltage Below Normal, or Shorted to Low Source
155	105	0	Red	Intake Manifold #1 Temp	Intake Manifold Air Temperature High – Data Valid but Above Normal Operational Range - Most Severe Level
187	1080	4	Amber	5 Volts DC Supply	Sensor Supply Voltage #2 Circuit – Voltage Below Normal, or Shorted to Low Source
195	111	3	Amber	Coolant Level	Coolant Level Sensor Circuit - Voltage Above Normal, or Shorted to High Source
196	111	4	Amber	Coolant Level	Coolant Level Sensor Circuit - Voltage Below Normal, or Shorted to Low Source
197	111	18	Amber	Coolant Level	Coolant Level - Data Valid but Below Normal Operational Range - Moderately Severe Level
211	1484	31	None	J1939 Error	Additional Auxiliary Diagnostic Codes logged - Condition Exists
212	175	3	Amber	Oil Temperature	Engine Oil Temperature Sensor 1 Circuit - Voltage Above Normal, or Shorted to High Source
213	175	4	Amber	Oil Temperature	Engine Oil Temperature Sensor 1 Circuit - Voltage Below Normal, or Shorted to Low Source
214	175	0	Red	Oil Temperature	Engine Oil Temperature - Data Valid but Above Normal Operational Range - Most Severe Level



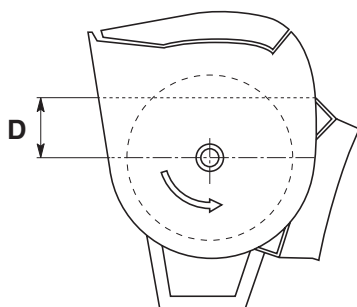
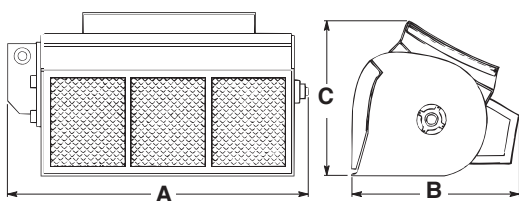
Optional Attachments

■ 500 LT MIXING BUCKET

(code 59.0400.8000)



TECHNICAL DATA	
Width (A)	1850 mm
Length (B)	1080 mm
Height (C)	1120 mm
Empty Weight	780 kg
All Up Weight	2000 kg
Output Capacity	500 lt
Total capacity	785 lt
Output level from shaft centre (D)	140 mm



Application

Quick coupling attachment for mixing and distributing concrete.

Safety

Strictly obey the general safety precautions given in section "Safety".

Operation

To load/unload the material, operate the rotation lever of the attachment holding plate.

Maintenance

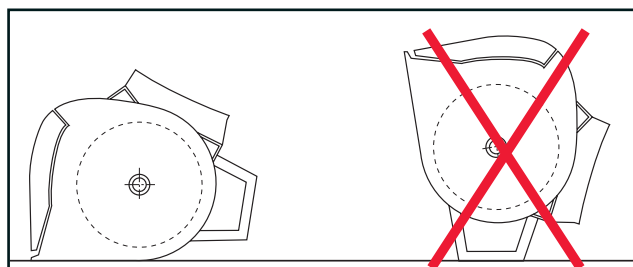
Visually check the bucket for damage before using it. Wash thoroughly with water after use or in case of prolonged inactivity to prevent the mix or residues from hardening.

Check for oil leaks from hoses and connectors. Carefully protect the quick connectors once disconnected to prevent impurities from entering the circuit.

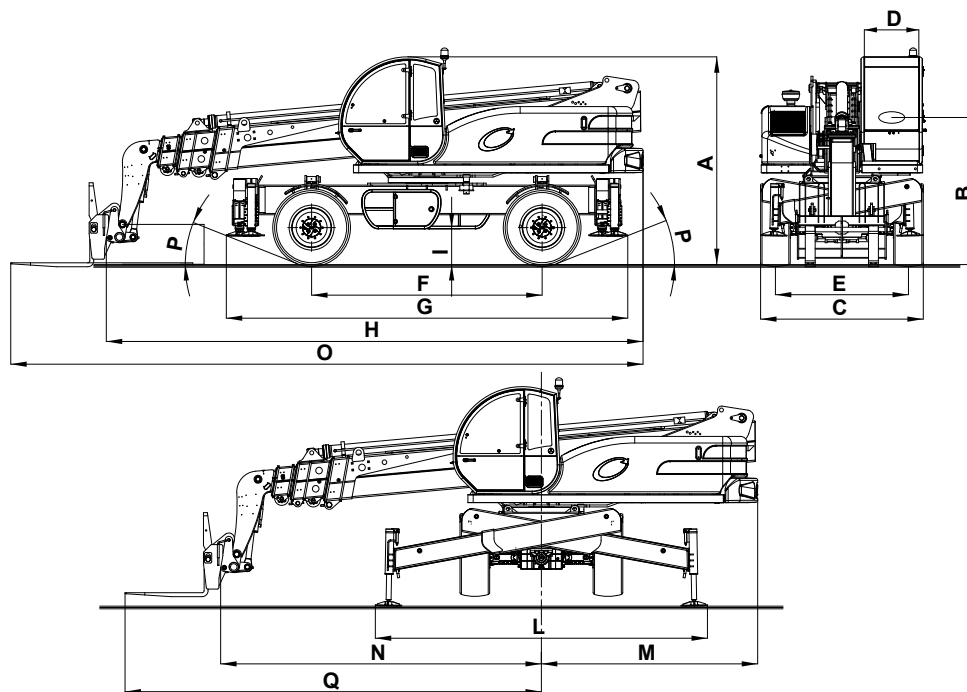


Before any maintenance, rest the bucket on the ground, stop the machine, remove the starter key and lock the cab door to prevent anybody from gaining access to the control panel.

REST POSITION



Specifications

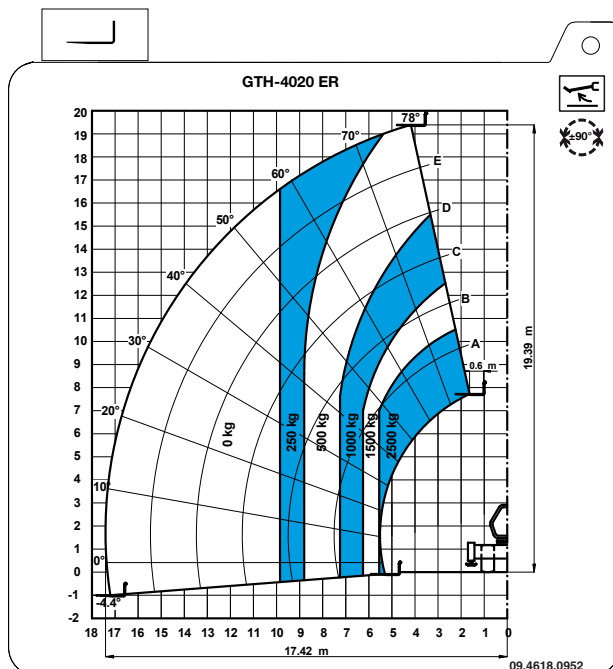
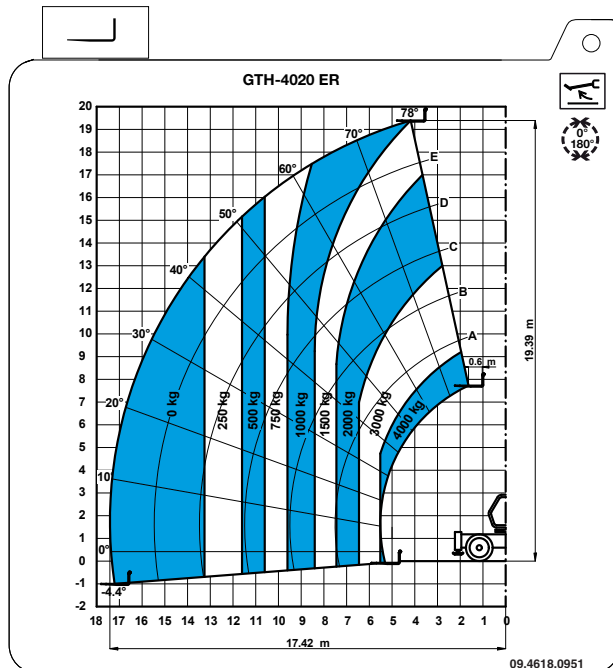
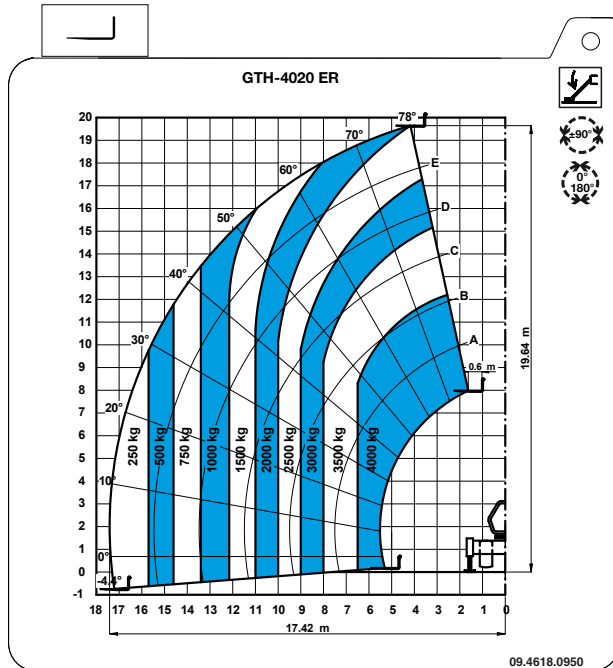


	GTH-4518 ER	GTH 4020 ER	GTH 6025 ER
■ MAIN DIMENSIONS			
A Overall height	3025	3025	3150
B Height to the steering wheel	2135	2135	2230
C Overall width	2430	2430	2470
D Inside cab width	780	780	780
E Track	1950	1950	2020
F Wheel-base	3030	3030	3500
G Length to the front tyres	5280	5280	6090
H Length to the fork holding plate	6485	7250	8400
I Ground clearance, center	440	440	540
L Max width with extended outriggers	5015	5015	5040
M Side rear overhang	2425	2425	3280
N Front overhang	3845	4825	5120
O Overall length	7900	8660	9600
Q Overall front overhang	5260	6020	6310
• Internal steering radius			2750
• External steering radius			4850



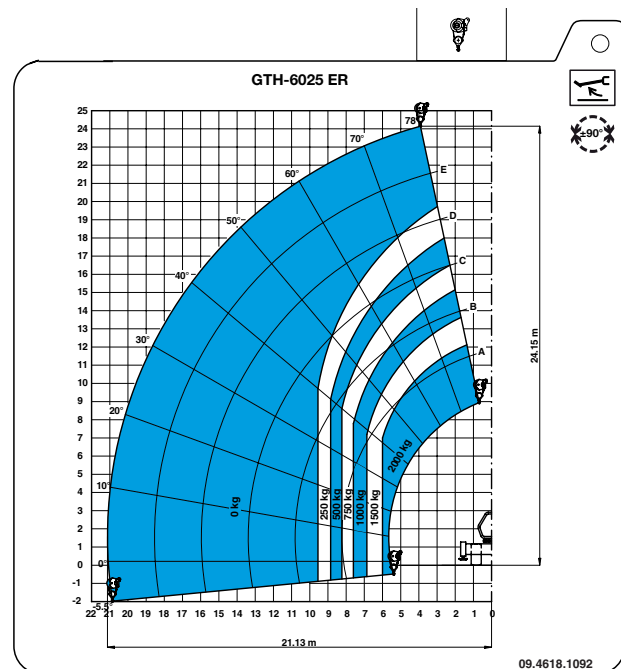
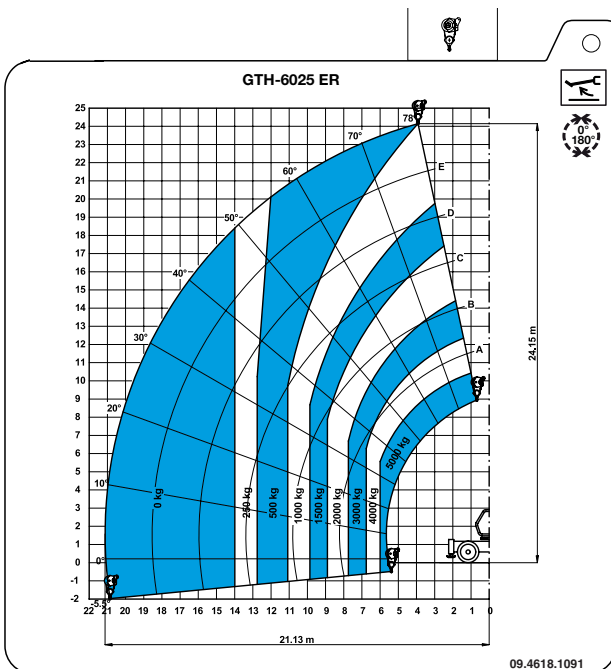
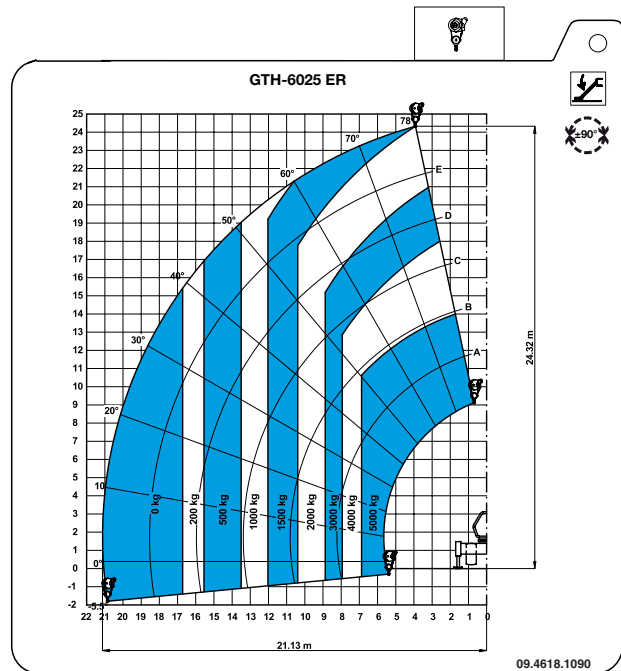
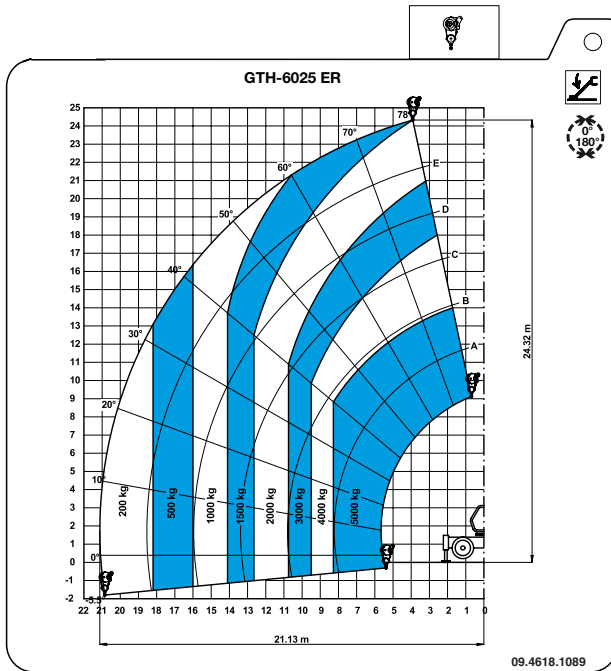
Load Charts

LOAD CHART WITH FORK GTH-4020 ER



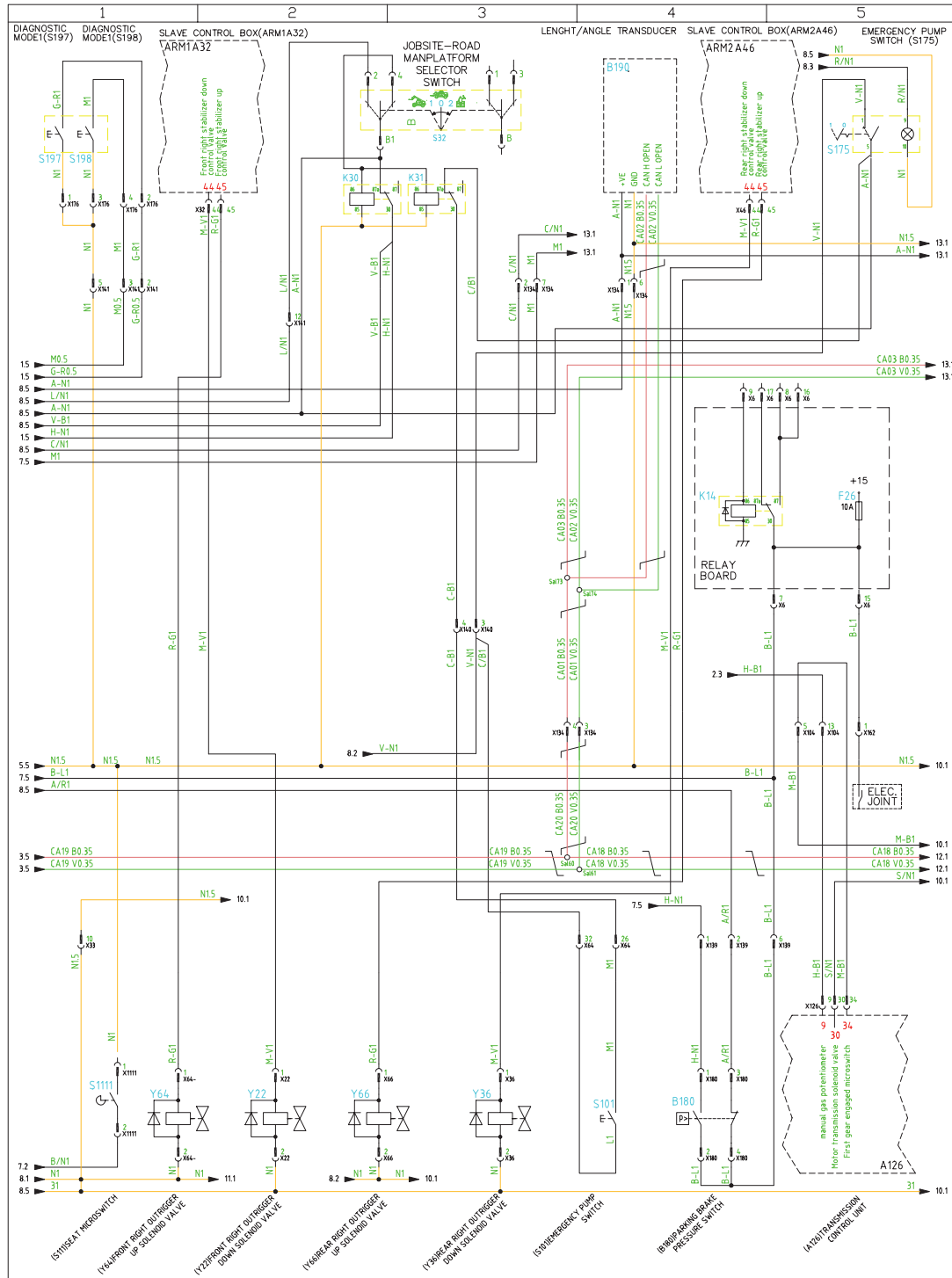
Load Charts

LOAD CHART WITH WINCH GTH-6025 ER



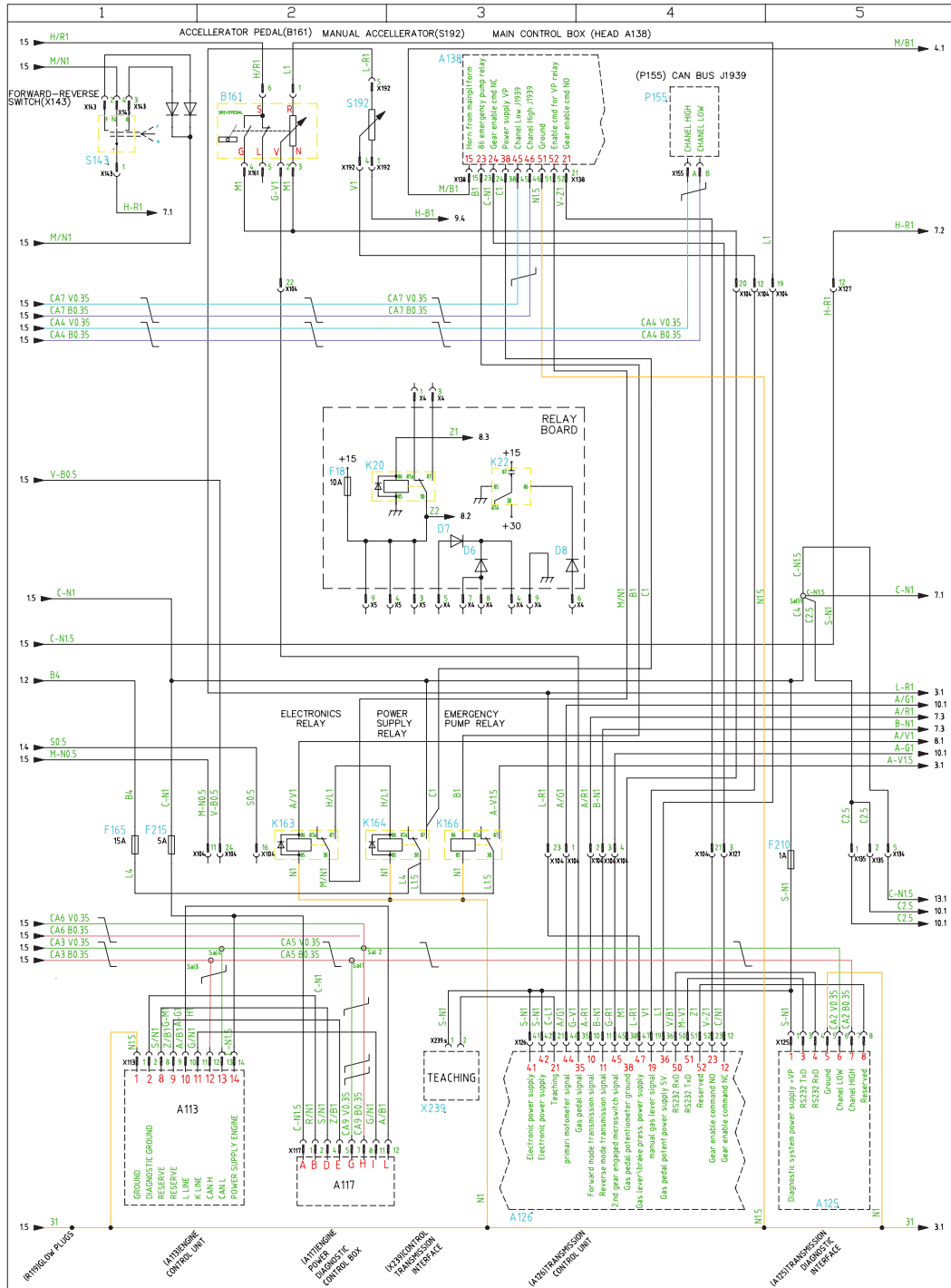
Diagrams and Schemes

■ GTH-6025 ER WIRING DIAGRAM 9/17



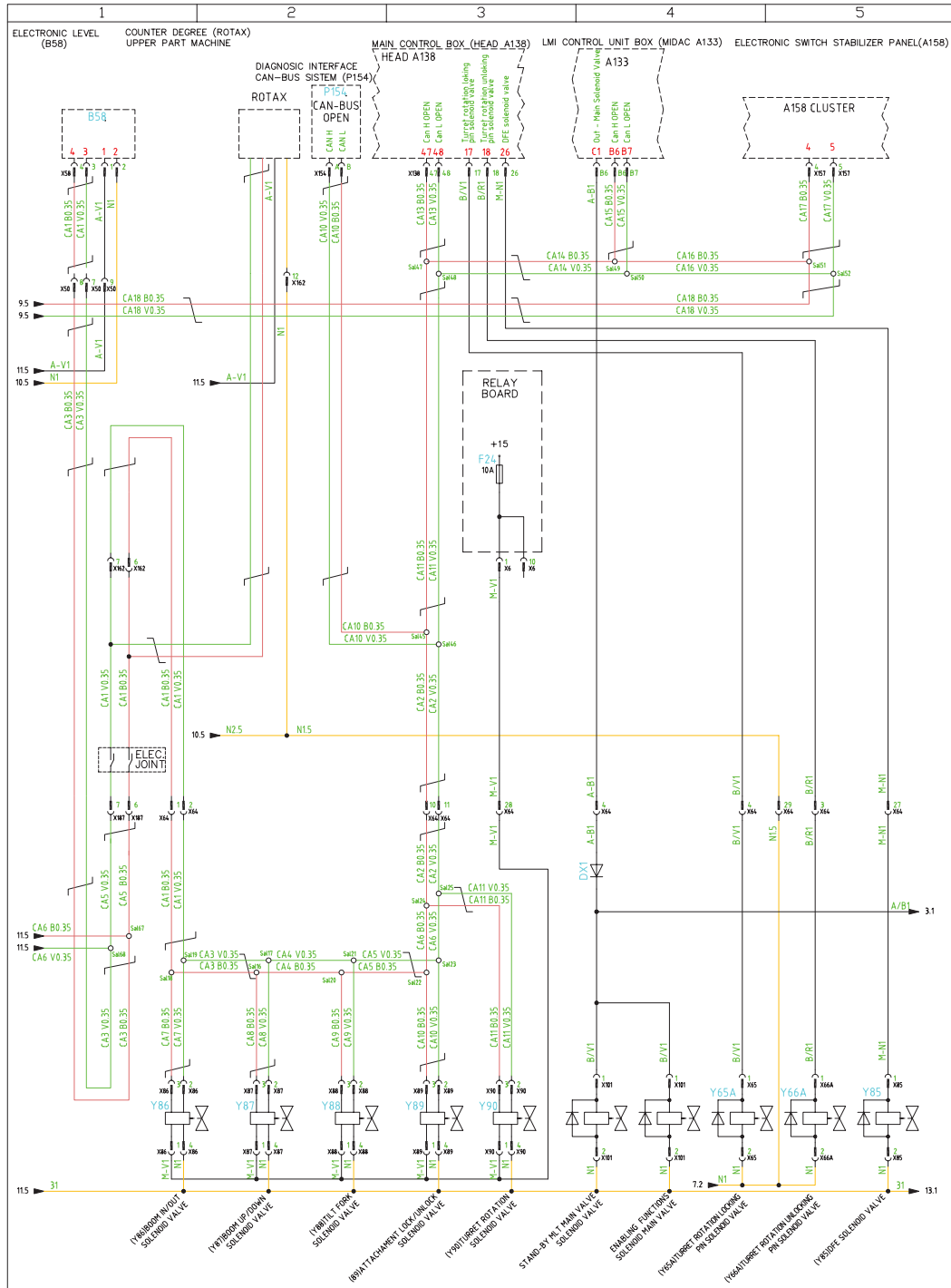
Diagrams and Schemes

■ GTH-4018 ER & GTH-4020 ER WIRING DIAGRAM 2/16



Diagrams and Schemes

■ GTH-4018 ER & GTH-4020 ER WIRING DIAGRAM 12/16



EC Declaration of Conformity

■ EC DECLARATION OF CONFORMITY FULL TEXT

Manufacturer and person authorized to compile the technical file **TEREXLIFT s.r.l. Zona Industriale Buzzacchero 06019 Umbertide (PG) Italia**

Hereby declares that the machinery described below

Designation: Rough Terrain Variable Reach Truck

Function: handling loads

Model **GTH XXXX YY**

Serial Number **XXXXX**

complies with the relevant provisions of the machinery directive **2006/42/EC**

complies with the relevant provisions of the directive **2004/108/EC**

also complies with the provisions of the Directive **2000/14/EC** as amended

Model: n°37 annex I directive 2000/14/EC

Conformity assessment procedure followed: n° 2 annex VI

Notified body: xxxxx

Net installed power (kW):

Measured sound power level: dB(A)

Guaranteed sound power level: dB(A)

Also complies with the following European Standards, National Standards and technical provisions:

EN 1459:1998/A2:2009

■ EXAMPLE OF LAYOUT

Documento cod. F.F.F.F.F.F.

Original	Original	Original	Original
EC DECLARATION OF CONFORMITY	DECLARATION CE DE CONFORMITE'	DECLARACION CE DE CONFORMIDAD	EG-KONFORMITÄTSERKLÄRUNG
Manufacturer and person authorized to compile the technical file	Fabricant et personne autorisée à constituer le dossier technique	El fabricante y la persona autorizada para elaborar el expediente técnico	Hersteller und Person berechtigt, die technischen Unterlagen zusammenzustellen
TEREXLIFT s.r.l. Zona Industriale Buzzacchero 06019 Umbertide (PG) Italia			
Hereby declares that the machinery described below	Déclare que la machine désignée ci-dessous	Declaramos que el equipo	Erläutert, dass die nachfolgende Maschine
Designation: Rough Terrain Variable Reach Truck	Désignation:	Désignación:	Bezeichnung:
Function: handling loads	Fonction: manipuler des charges	Función: manejar las cargas	Funktion: Handhabung von Lasten
Model	Modèle	Modelo	Modell
Serial number	N° de série	Serie	Seriennummer
complies with the provisions of the machinery directive 2006/42/EC	est conforme aux dispositions de la directive machines 2006/42/EC	Corresponde a las exigencias básicas de la Directiva Máquinas 2006/42/EC	Mit den Bestimmungen der Maschinenrichtlinie 2006/42/EC
also complies with the provisions of the Directive 2000/14/EC as amended	est également conforme aux dispositions de la Directive 2000/14/EC modifiée avec:	está, además, en conformidad con las exigencias de la Directiva 2000/14/CE incluidas las modificaciones de la misma	ebenefalls mit den Bestimmungen der Richtlinie 2000/14/EG geänderte richtlinie 2005/88/EG
Model: n°37 annex I directive 2000/14/EC	Désignation: n° 37 annexe I Directive 2000/14/CE	Tipo: n°37 anexo I Directiva 2000/14/CE	Bezeichnung: n° 37 anhang I Richtlinie 2000/14/EG
Conformity assessment procedure followed: n° 2 annex VI	Procédure appliquée pour l'évaluation de la conformité: n°2 annexe VI	Procedimiento de evaluación de la conformidad: n° 2 anexo VI	Konformitätsbewertungsverfahren: n° 2 anhang VI
Notified body:	Organisme notifié	Organismo notificado	Name und Anschrift der benannten Stelle
Net installed power (kW):	Puissance nette installée (kW):	Potencia neta instalada (kW):	Installierte Nutzleistung in kW:
Measured sound power level: dB(A)	Niveau de puissance acoustique mesuré: dB(A)	Nivel de potencia acústica medido: dB(A)	Maschinen gemessener Schallleistungspiegel: dB(A)
Guaranteed sound power level: dB(A)	Niveau de puissance acoustique garanti: dB(A)	Nivel de potencia acústica garantizado: dB(A)	Maschinen garantierter Schallleistungspiegel: dB(A)
Also complies with the following European Standards, National Standards and technical provisions	Est également conforme aux normes européennes, aux normes nationales et aux dispositions techniques suivantes	Las siguientes normas nacionales e internacionales y especificaciones técnicas fueron aplicadas	Ebenfalls mit folgenden europäischen normen, nationalen normen und technischen Vorschriften übereinstimmt
EN 1459:1998/A2:2009			
Umbertide, 11/12/2009		Ing. Maurizio Balducci (Technical Director)	

CLICK HERE TO **DOWNLOAD** THE COMPLETE MANUAL

- Thank you very much for reading the preview of the manual.
- You can download the complete manual from: www.heydownloads.com by clicking the link below



- Please note: If there is no response to CLICKING the link, please download this PDF first and then click on it.

CLICK HERE TO **DOWNLOAD** THE COMPLETE MANUAL