



A TEREX BRAND

Operator's Manual

Serial number range

GTH-2506

Stage 3A

Stage 3B

From serial n.: GTH250614-101

GTH-3007

Stage 3A

Stage 3B

From serial n.: GTH300716M-101

Original Instructions
Second Edition
First Printing
Part No. 57.0009.0631

CLICK HERE TO **DOWNLOAD** THE COMPLETE MANUAL

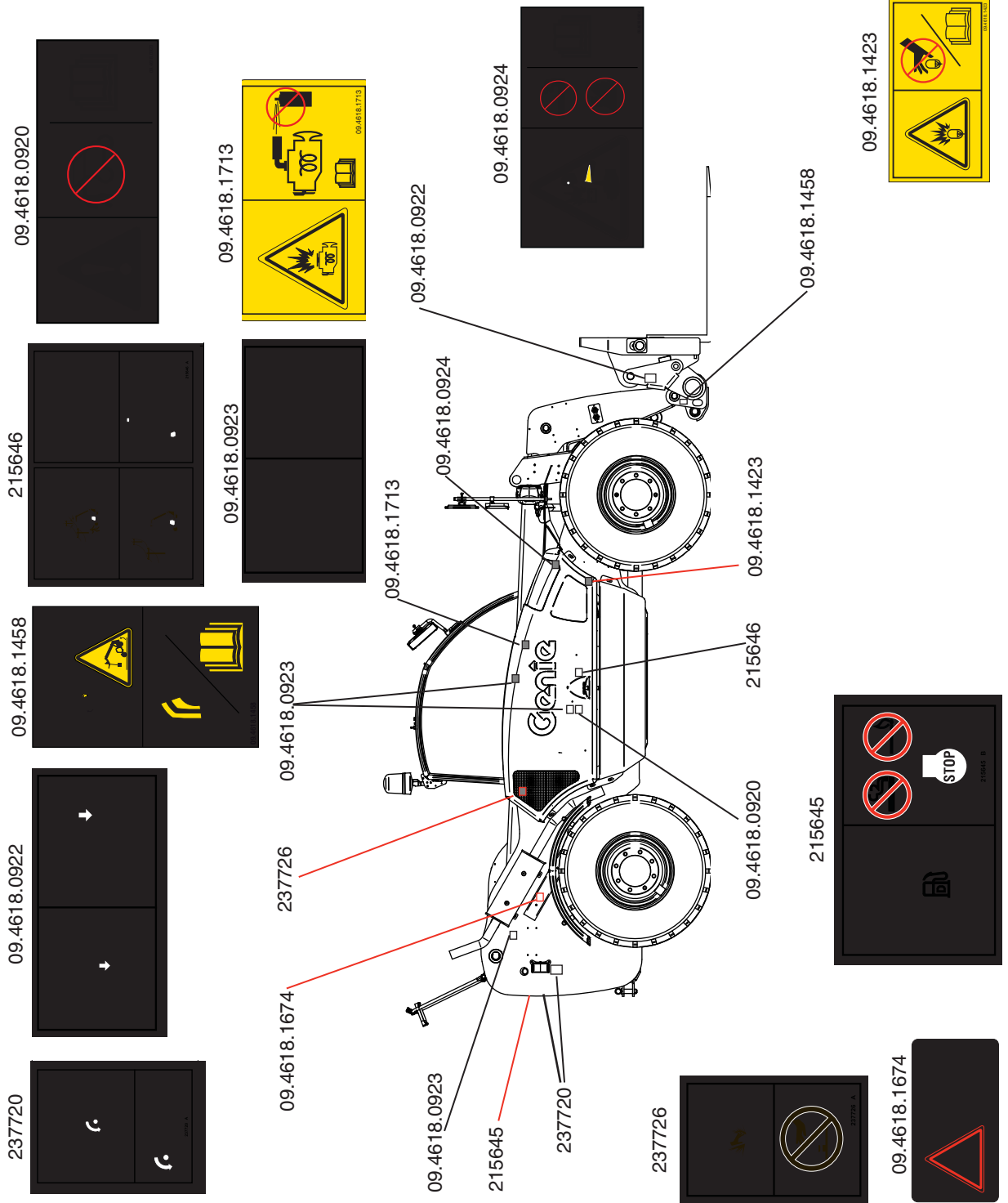
- Thank you very much for reading the preview of the manual.
- You can download the complete manual from: www.heydownloads.com by clicking the link below



- Please note: If there is no response to CLICKING the link, please download this PDF first and then click on it.

CLICK HERE TO **DOWNLOAD** THE COMPLETE MANUAL

General Safety for GTH 3007 Stage 3A



Safety Precautions

▲ Requirements for Machine Operators

Operators who use the machine regularly or occasionally (i.e. for transport reasons) shall have the following prerequisites:

health:

before and during any operation, operators shall never take alcoholic beverages, medicines or other substances that may alter their psycho-physical conditions and, consequently, their working abilities.

physical:

good eyesight, acute hearing, good co-ordination and ability to carry out all required operations in a safe way, according to the instructions of this manual.

mental:

ability to understand and apply the enforced rules, regulations and safety precautions. They shall be careful and sensible for their own as well as for the others' safety and shall desire to carry out the work correctly and in a responsible way.

emotional:

they shall keep calm and always be able to evaluate their own physical and mental conditions.

training:

they shall read and be familiar with this handbook, its enclosed graphs and diagrams, the identification and hazard warning plates. They shall be skilled and trained about the machine use.

The operator shall have a licence (or a driving licence) when provided for by the laws enforced in the country where the machine is operated. Please, ask the competent bodies. In Italy the operator must be at least 18 year old.

▲ Requirements for service personnel

Personnel in charge of the machine maintenance shall be qualified, specialised in the maintenance of telehandlers, and shall have the following prerequisites:

physical:

good eyesight, acute hearing, good co-ordination and ability to carry out all required maintenance operations in a safe way, according to this manual.

mental:

ability to understand and apply the enforced rules, regulations and safety precautions. They shall be careful and sensible for their own as well as for the others' safety and shall desire to carry out the work correctly and in a responsible way.

training:

they shall read and be familiar with this handbook, its enclosed graphs and diagrams, the identification and warning plates. They shall be skilled and trained about the machine functioning.

From a technical point of view, routine maintenance of the machine is not a complex procedure and can be carried out by the machine operator too, provided he has a basic knowledge of mechanics.

Inspections

Pre-operation Inspection

- Be sure that the operator's and safety manuals are complete, legible and in the storage container located in the cab.
- Be sure that all decals are legible and in place. See Inspections section.
- Check for hydraulic oil leaks and proper oil level. Add oil if needed. See Maintenance section.
- Check for battery fluid leaks and proper fluid level. Add distilled water if needed. See Maintenance section.
- Check for engine oil leaks and proper oil level. Add oil if needed. See Maintenance section.
- Air-filled tires models: Check for proper tire pressure. Add air if needed. See Maintenance section.

Check the following components or areas for damage, improperly installed or missing parts and unauthorized modifications:

- Electrical components, wiring and electrical cables
- Hydraulic hoses, fittings, cylinders and manifolds
- Fuel and hydraulic tanks
- Drive motors and drive hubs
- Boom wear pads
- Tires and wheels
- Mirrors
- Engine and related components

- Limit switches
- Lights, alarms and beacons
- Pins, nuts, bolts and other fasteners

Check entire machine for:

- Cracks in welds or structural components
- Dents or damage to machine
- Excessive rust, corrosion or oxidation
- Be sure that all structural and other critical components are present and all associated fasteners and pins are in place and properly tightened.
- Be sure the windshield and windows (if equipped) are clean and free of obstructions that might limit visibility.
- After you complete your inspection, be sure that all guards, screens and compartment covers are in place and secured.

Inspections

Inspection for GTH 3007 Stage 3A Decals

Use the pictures on the next page to verify that all decals are legible and in place.

Below is a numerical list with quantities and descriptions.

Part No.	Decal Description	Qty
215645	Danger – Explosion/Burn Hazard, Fueling	1
215646	Warning – Electrocutation Hazard	2
09.4618.1818	Danger - No Riders on Forks	1
82560	Warning – Injection Hazard	1
237720	Warning – Crush Hazard, Moving Machine	3
237721	Warning – Dress seat Belt	1
237726	Warning – Burn Hazard	1
09.4616.0002	Label – 3000 kg	1
09.4618.0776	Label - Upper Door Internal Unlock	1
09.4618.0920	Warning – Engine Compartment	1
09.4618.0922	Warning – Crush Hazard	2
09.4618.0924	Danger – Explosion/Burn Hazard	1
09.4618.0923	Warning – Burn Hazard, Hot Parts	3
09.4618.1691	Label - Test Ports	1
09.4618.1375	Warning - Tip Over, Respect Capacity	1
09.4618.1398	Label - Attachment Locking Pin	1
09.4618.1025	Label - External Door Unlock	1
09.4618.1742	Label - Emergency Exit	1
09.4618.1419	Label - Naturelle Hydraulic Oil	1
09.4618.1423	Danger – Explosion/Burn Hazard	1
09.4618.1687	Label - Control Lever	1
09.4618.1689	Label - Control Lever with Lock/Unlock (if equipped)	1
09.4618.1458	Warning - Tip Over, Respect Capacity	2
09.4618.1992	Cosmetic - Genie GTH-3007	1
09.4618.1993	Cosmetic - GTH -3007	1
09.4618.1994	Cosmetic - Genie GTH-3007	1
1258639	Cosmetic - Genie	1
09.4618.1645	Label - Load Limiting System Disabling	1

Part No.	Decal Description	Qty
09.4618.1670	Label - Hydraulic Oil	2
28159	Label – Diesel	1
09.4618.1674	Warning - Crush Hazard, Safety Collar	1
09.4618.1682	Label - Tyre Pressure 5.5 bar	4
09.4618.1995	Label - Anchoring & Lifting	1
09.4618.1678	Label - Cut-off Switch	1
09.4618.1679	Warning - 7 decals	1
09.4618.1713	Warning - Burn Hazard	1
09.4618.1781	Warning – Falling Object Hazard	1
09.4618.1782	Danger – Electrocutation Hazard	1
09.4618.1999	Label - Do not use DOT FLUID	1

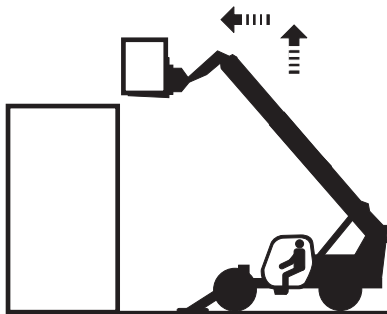
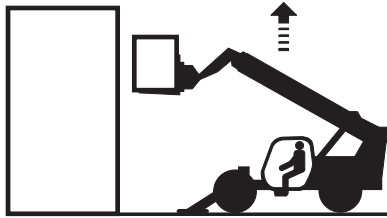
GTH-3007 Load Chart Set

Part No.	Description	Qty
09.4618.2016	Label - Fork on Tires	1
09.4618.2022	Label - Hook	1
09.4618.2023	Label - 2000 kg Jib	1
09.4618.2024	Label - 900 kg Jib	1
09.4618.2025	Label - Bucket	1

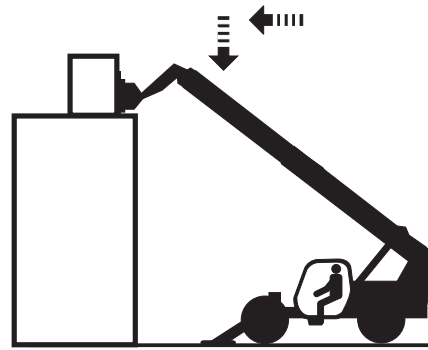
Operating Instructions

Placing the load

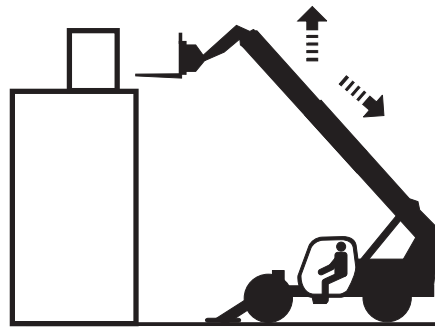
- 1 Travel to the desired work site and carefully stop the machine.
- 2 Put the transmission in neutral.
- 3 Apply the parking brake.
- 4 Gradually move the controller to raise and extend the boom to the required height.



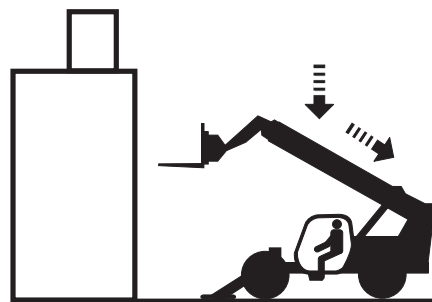
- 5 Gradually move the controller to lower and extend the boom into final position. Lower the load until the weight is completely off the forks. Do not apply a downward force with the forks.



- 6 Gradually move the controller to raise and retract the boom. This will bring the forks out of the load.



- 7 When the forks are clear of the load and the structure, the boom can be lowered and retracted.



Transport and Lifting Instructions



Observe and Obey:

- Genie customers needing to containerize any lift or Genie product should source a qualified freight forwarder with expertise in preparing, loading and securing construction and lifting equipment for international shipment.
- Only qualified operators should move the machine on or off the truck.
- The transport vehicle must be parked on a level surface.
- The transport vehicle must be secured to prevent rolling while the machine is being loaded.
- Before loading for transport, make sure the deck, ramps and machine tires are free of mud, snow and ice. Failure to do so could cause the machine to slide.
- Be sure the vehicle capacity, loading surfaces and chains or straps are sufficient to withstand the machine weight. Genie telehandlers are very heavy relative to their size. See the serial label for the machine weight. See the Inspections section for the serial label location.

Maintenance

A-4 Lubricate the Boom



Genie specifications require that this procedure be performed every 8 hours or daily, whichever comes first.

Greasing the specified locations is essential for good machine performance and service life. Operating the machine with little or no grease may cause the machine to perform poorly and continued use may cause component damage.

Grease Specification	
PTFE INTERFLON FIN GREASE LS 2	
Genie part number	09.4693.0000

1. Fully extend and raise the boom, then retract the boom, checking to insure it operates smoothly. There should be a light film of lubricant on wear pad contact surfaces.
 - ⊙ Result: Boom operates smoothly and a thin film of lubricant is visible. Proceed to step 4.
 - ☒ Result: Boom does not extend or retract smoothly and no lubricant is visible on wear pad contact surfaces. Proceed to step 2.
2. Apply a thin layer of grease to the underside of the number 2 boom tube where it makes contact with the number 1 boom tube lower wear pads.
3. Lubricate the top and side boom tube wear pads.
4. Return the boom to the stowed position.
5. Reach the pivot end of the boom and lubricate the chain return pulley using a grease gun.

A-5 Perform Engine Maintenance - Perkins Models



Engine specifications require that this procedure be performed every 8 hours or daily, whichever comes first.

- Deutz TD 2.9 L4**
- Lubricating oil level - check/add**
- Coolant level - check/add**
- Visual inspection**
- Suction air filter/dry air filter - check**
- Fuel pre-filter - check/empty water**

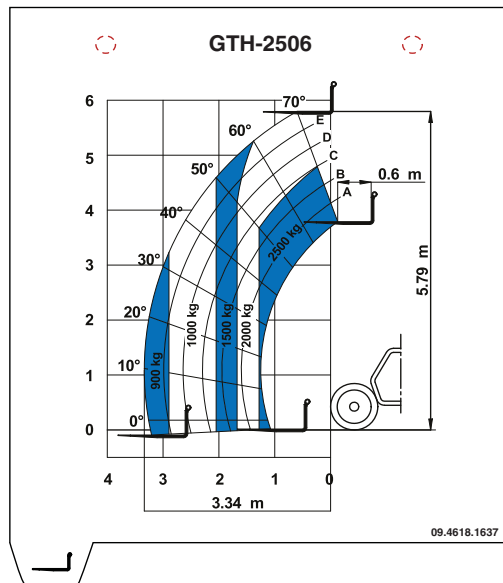
**Only for Deutz TD 2.9 L4 - Stage IIIB
Exhaust system including exhaust
aftertreatment components - check for leaks**

Required maintenance procedures and additional engine information is available in the Deutz TD 2.9 L4 Operation and Maintenance Manual (Deutz part number 0312 3893).

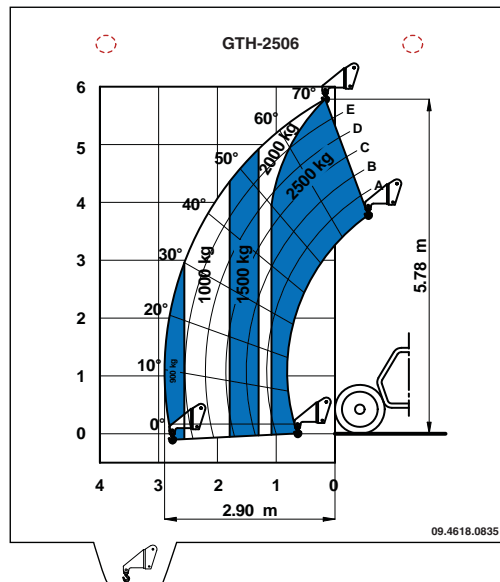
Deutz TD 2.9 L4 Operation and Maintenance Manual	
Genie part number	57.4700.0006

Load Charts

GTH-2506, Standard Carriage



GTH-2506, Hook



CLICK HERE TO **DOWNLOAD** THE COMPLETE MANUAL

- Thank you very much for reading the preview of the manual.
- You can download the complete manual from: www.heydownloads.com by clicking the link below



- Please note: If there is no response to CLICKING the link, please download this PDF first and then click on it.

CLICK HERE TO **DOWNLOAD** THE COMPLETE MANUAL