

SL4635 & SL4835 Skid Loaders



OPERATOR'S MANUAL

GEHL®

CLICK HERE TO **DOWNLOAD** THE COMPLETE MANUAL

- Thank you very much for reading the preview of the manual.
- You can download the complete manual from: www.heydownloads.com by clicking the link below



- Please note: If there is no response to CLICKING the link, please download this PDF first and then click on it.

CLICK HERE TO **DOWNLOAD** THE COMPLETE MANUAL



SAFETY



! DANGER REMOVING HOSES OR COMPONENT FAILURE CAN CAUSE LIFT ARMS TO DROP
 USE MECHANICAL LOCK WHEN LEAVING LIFT ARM IN RAISED POSITION FOR SERVICE
 FAILURE TO HEED WILL RESULT IN DEATH OR SERIOUS INJURY

129132

129132



! WARNING

GAS-CHARGED SPRING CYLINDERS ARE USED ON THIS MACHINE. SEE OPERATOR'S MANUAL FOR LOCATIONS.

CYLINDERS HAVE HIGH INTERNAL PRESSURE. DO NOT DISASSEMBLE. DISASSEMBLY COULD RELEASE PARTS WITH GREAT FORCE.

FAILURE TO HEED COULD RESULT IN DEATH OR SERIOUS INJURY.

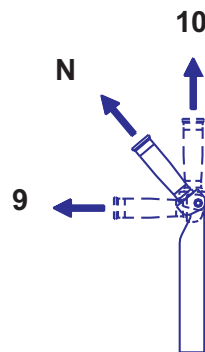
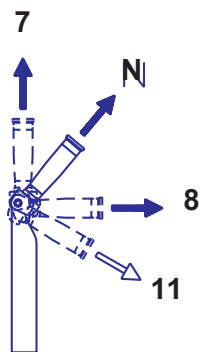
122745



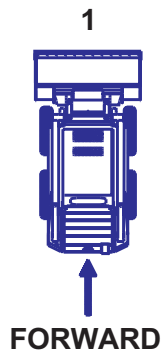
DUAL HAND CONTROLS



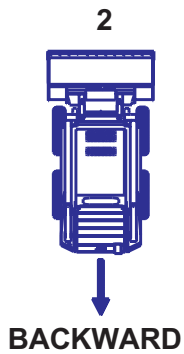
LEFT HANDLE CONTROL



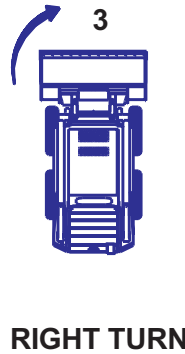
RIGHT HANDLE CONTROL



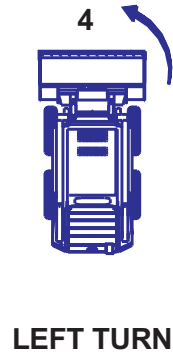
FORWARD



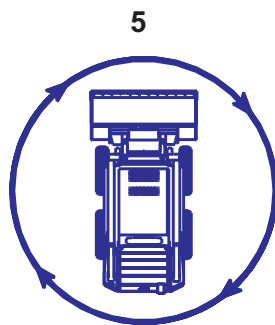
BACKWARD



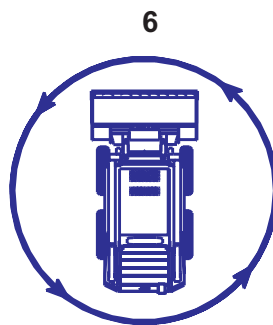
RIGHT TURN



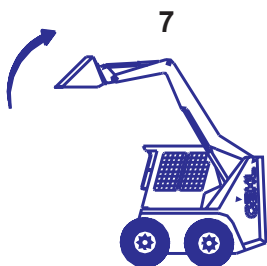
LEFT TURN



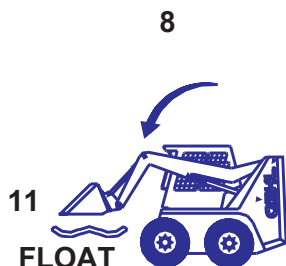
RIGHT PIVOT



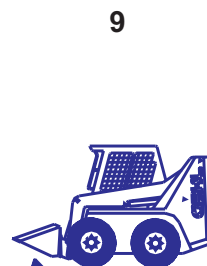
LEFT PIVOT



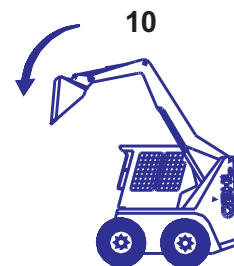
RAISE LIFT ARM



LOWER LIFT ARM



BUCKET ROLLBACK



BUCKET DUMP

Perform all drive control functions before operating **both** lift/tilt and drive controls. Return the drive controls to the “neutral” position to stop all movement.

NOTE: *If the engine stalls, all controls must be returned to their “neutral” positions before restarting the engine.*

Operating skills are obtained through proper coordination of the loader’s forward and reverse movements, with raising and lowering the lift arm and rolling the bucket forward and back. To gain proficiency, practice all control handle operations until you are capable of performing the movements without mistake or hesitation.

WARNING

BEFORE leaving the operator’s compartment, **BE SURE** to lower the lift arm or engage the lift arm support device, as appropriate.

NOTE: *If the loader will not start, the lift arm can be lowered by sitting in the operator’s seat with the restraint bar down, turning the key to the “ON” position and then lowering the lift arm.*

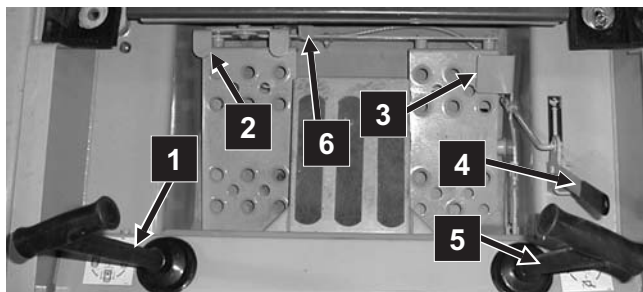


Fig. 6-2: T-Bar Controls

1. Drive Control T-Bar
2. Auxiliary Hydraulics Foot Pedal
3. Foot Throttle
4. Hand Throttle
5. Lift/Tilt Control T-Bar
6. Auxiliary Hydraulics Foot Pedal Stop

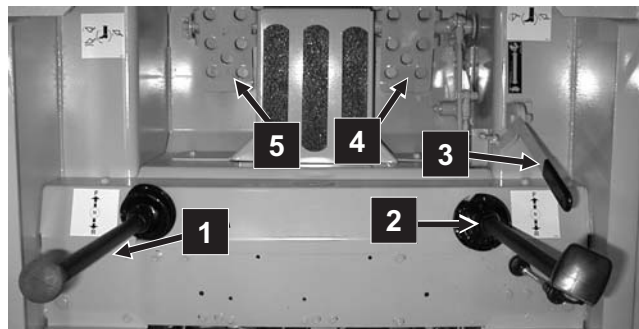


Fig. 6-3: Hand & Foot Controls w/Electric Auxiliary Hydraulics

1. Left Drive Control Handle
2. Right Drive Control Handle & Electric Auxiliary Hydraulic Switch
3. Hand Throttle
4. Tilt Control Foot Pedal
5. Lift Control Foot Pedal

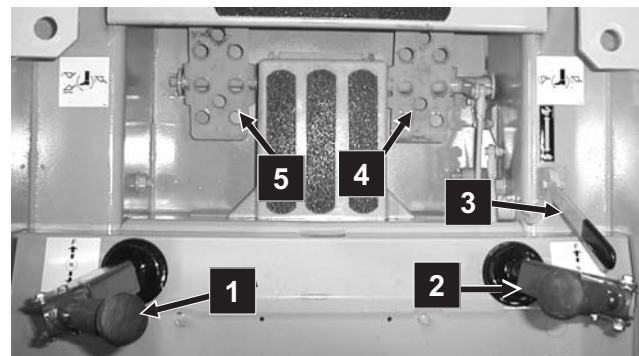


Fig 6-4: Hand & Foot Controls w/Mechanical Auxiliary Hydraulics

1. Left Drive Control Handle
2. Right Drive Control Handle & Mechanical Auxiliary Hydraulic Control
3. Hand Throttle
4. Tilt Control Foot Pedal
5. Lift Control Foot Pedal

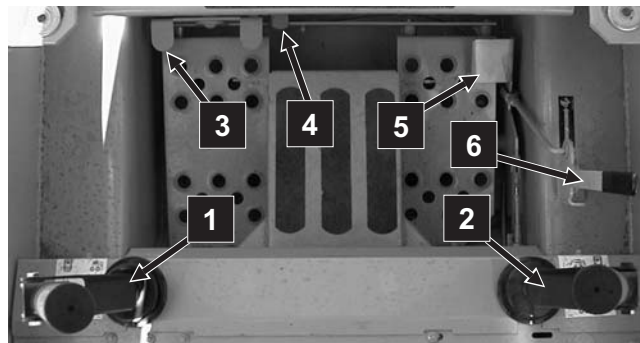


Fig. 6-5: Dual Hand Controls

1. Left Drive/Lift Control Handle
2. Right Drive/Tilt Control Handle
3. Auxiliary Hydraulics Foot Pedal
4. Auxiliary Hydraulics Foot Pedal Stop
5. Foot Throttle
6. Hand Throttle

To Adjust Chain Tension

1. Raise the loader off the ground following the "Loader Raising Procedure" topic at the beginning of this chapter.
2. Remove the access cover located between the wheels to gain access to the drive chain front and rear take-up assemblies.
3. Rotate the front and rear tires (by hand) towards each other so the slack sides of the chains are at the top.
4. Working through the access hole, loosen the lock nut then the flanged lock nut on either of the two chains.
5. Begin tightening the adjustment nut. This will cause the idler assembly to lower, thereby increasing tension on the chain.
6. The correct chain deflection is 1/2" (12 mm) minimum on the side opposite from the adjuster - halfway between the sprockets (fig. 7-2).

7. After the proper chain tension is obtained, retighten the flanged lock nut and lock nut.

IMPORTANT: *Over-tightening the drive chain will cause premature drive chain and axle sprocket wear.*

8. Repeat steps 4 through 7 for the other chain.
9. Reinstall the chaincase access covers using oil resistant RTV or equivalent between the cover and the chaincase. If necessary, replenish the chaincase oil level until oil runs out of the oil level check plug (fig. 7-2).
10. Repeat steps 2 through 9 for the other side of loader.
11. Follow the "Loader Lowering Procedure" topic at the beginning of this chapter to return the loader to the ground.

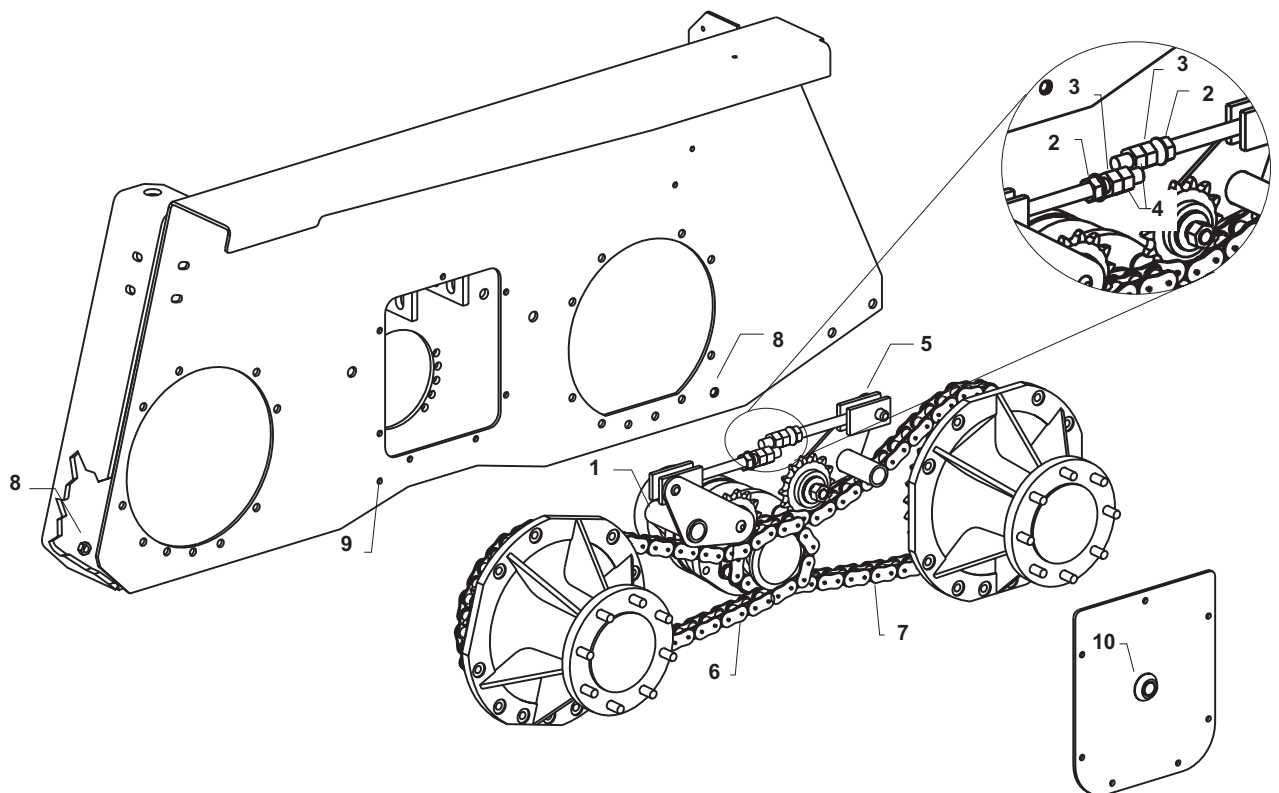


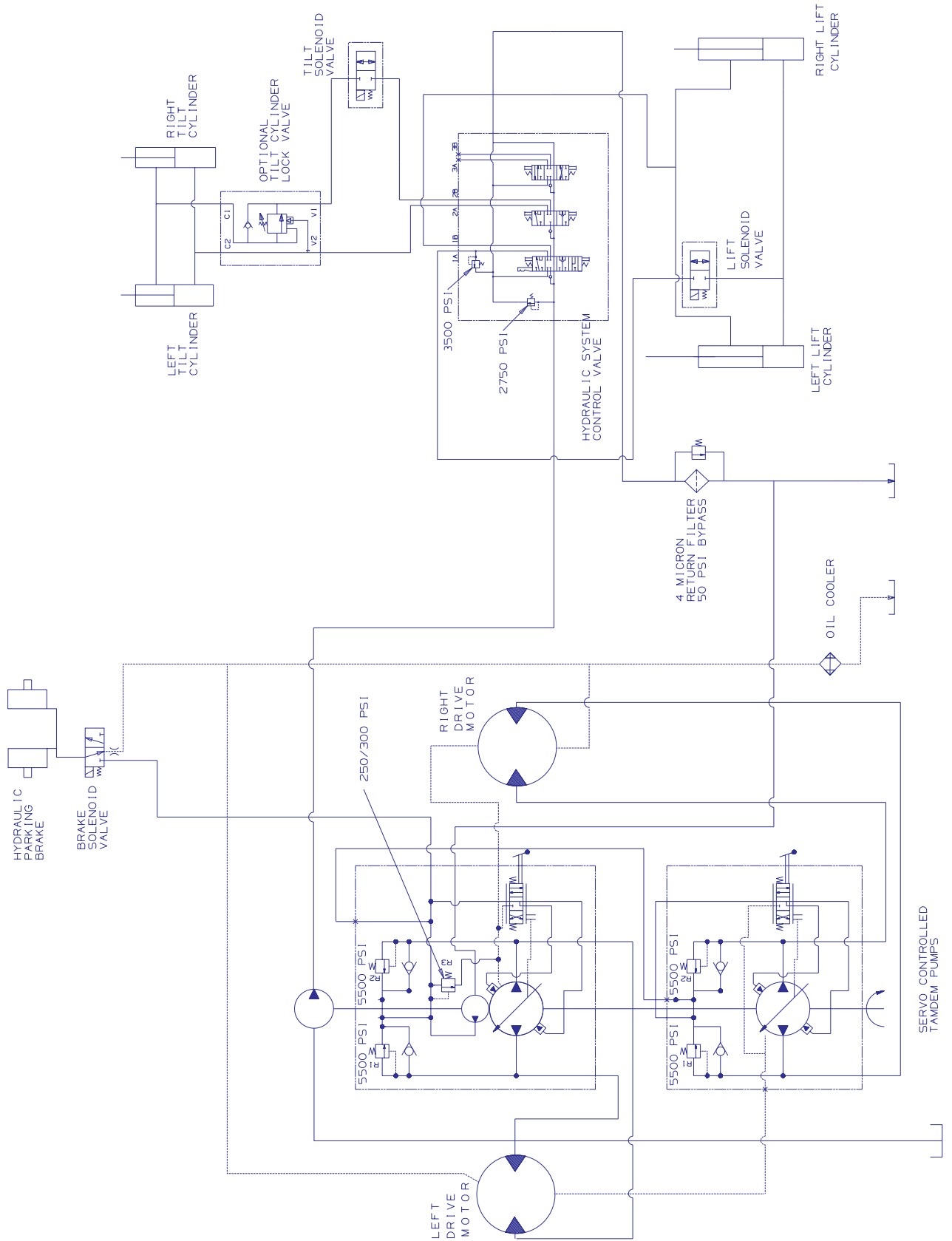
Fig. 7-2: Adjusting Drive Chain Tension - Left side shown, right side typical

- | | |
|--------------------------|-------------------------|
| 1. Front Adjuster | 6. Front Chain Drive |
| 2. 3/4" Flanged Lock Nut | 7. Rear Drive Chain |
| 3. 3/4" Adjustment Nut | 8. Drain Plugs |
| 4. Lock Nut | 9. Oil Level Check Plug |
| 5. Rear Adjuster | 10. Oil Fill Plug |

Hydraulic System

Problem	Possible Cause	Remedy
Lift/Tilt controls fail to respond.	Hydraulic oil viscosity is too heavy.	Allow longer warm-up or replace with proper viscosity oil.
	Hydraulic oil level is low.	Check oil level in reservoir. If oil is low, check for an external leak. Repair and add oil.
	Solenoid valve(s) malfunctioning.	Check electrical connections to lift solenoid and repair.
	Restraint bar or seat switch malfunction.	Check switches.
Hydraulic cylinder action is slow for lift and/or tilt functions.	Low engine speed.	Operate engine at higher speed.
	Hydraulic oil viscosity is too heavy.	Allow longer warm-up or replace existing oil with proper viscosity oil.
	Control linkage is restricted.	Check for control linkage restriction and adjust.
	Hydraulic oil leaking past cylinder piston seals.	Contact your Gehl dealer for assistance.
	Worn gear pump.	Contact your Gehl dealer for assistance.
	Solenoid valve(s) could be malfunctioning.	Check electrical connections to lift solenoid and repair connections as needed. If lift solenoid valve is still not functioning properly, contact your Gehl dealer for assistance.
Jerky lift arm and bucket action.	Relief valve in control valve not functioning correctly. Squealing noise should be evident while operating.	Contact your Gehl dealer for assistance.
	Seat or restraint bar switch malfunction.	Check electrical connections to the switches. Replace as needed.
	Air in the hydraulic system.	Cycle lift and tilt cylinders to maximum stroke and maintain pressure for short time to clear air from system.
Bucket does not level on the lift cycle.	Oil in hydraulic reservoir is low.	Check and add oil to reservoir as needed.
	Self-leveling valve misadjusted or malfunctioning.	Contact your Gehl dealer for assistance.
Bucket drifts downward with tilt control in neutral.	Oil leaking past tilt cylinder seals (internal or external).	Contact your Gehl dealer for assistance.
	Self-leveling valve is malfunctioning.	Contact your Gehl dealer for assistance.
	Leaking hydraulic hoses, tubes, or fittings between control valve and cylinders.	Inspect hoses and tubes, tighten fittings. Replace hoses or tubes as needed.
No down pressure on the bucket.	Control valve in "Float" position.	Take control out of "Float" position.
	Tilt cylinders are malfunctioning.	Contact your Gehl dealer for assistance.
	Relief valve in control valve not functioning properly. Squealing noise should be evident while operating.	Contact your Gehl dealer for assistance.

SL4635 Hydrostatic/Hydraulic Schematic



CLICK HERE TO **DOWNLOAD** THE COMPLETE MANUAL

- Thank you very much for reading the preview of the manual.
- You can download the complete manual from: www.heydownloads.com by clicking the link below



- Please note: If there is no response to CLICKING the link, please download this PDF first and then click on it.

CLICK HERE TO **DOWNLOAD** THE COMPLETE MANUAL