

GEHL

Form No.
913323
Revision D
May
2014

RS6-34

Telescopic Handler

Serial Number 21541 thru 21700 (with Tier 3 engine)

Beginning with Serial Number 21701 (with Interim Tier 4 engine)



Operator's Manual

CLICK HERE TO **DOWNLOAD** THE COMPLETE MANUAL

- Thank you very much for reading the preview of the manual.
- You can download the complete manual from: www.heydownloads.com by clicking the link below



- Please note: If there is no response to CLICKING the link, please download this PDF first and then click on it.

CLICK HERE TO **DOWNLOAD** THE COMPLETE MANUAL



SAFETY



are examples of types of equipment that may be required. DO NOT wear loose fitting clothing, long hair, jewelry or loose personal items while operating or servicing the machine.

- ALWAYS check the job site for terrain hazards, obstructions and people. Remove all objects that do not belong in or on the machine and its equipment.
- Gehl telescopic handlers are designed and intended to be used only with Gehl attachments and approved attachments. To avoid possible personal injury, equipment damage and performance problems, use attachments that are approved for use on and within the operating capacity of the machine. Contact your dealer or Gehl Company for information on attachment approval and compatibility with specific machine models. Gehl cannot be responsible if the machine is used with a non-approved attachment.

Operation Safety Reminders

- Any or all of the following elements may affect the stability of the machine: terrain, engine speed, type of load being carried and placed, improper tire inflation, weight of the attachment tool, and abrupt movement of any control lever. **IF YOU ARE NOT CAREFUL WHILE OPERATING THIS MACHINE, ANY OF THE ABOVE FACTORS COULD CAUSE THE MACHINE TO TIP, AND YOU COULD BE THROWN OUT OF THE OPERATOR'S STATION, WHICH COULD RESULT IN SERIOUS INJURY OR DEATH!**
- ALWAYS wear the seat belt provided to prevent being thrown from the machine. If you are in an overturn:
 - DO NOT jump!
 - Hold on tight and stay with the machine!
 - Lean away from the fall!
- ALWAYS keep hands, feet and arms inside of the operator's station when operating the machine!
- DO NOT depend on the backup alarm to clear bystanders out of the path of the machine. ALWAYS look in the direction of travel. Look to the rear before backing.
- ALWAYS use the recommended handholds and steps with at least three points of support when getting on and off the machine. Keep steps and platform clean. Face the machine when climbing up and down.
- DO NOT raise or drop a loaded fork or bucket suddenly. Abrupt movements under load can cause serious instability.
- Study the load chart carefully. It shows maximum capacity to be lifted and placed at specific outward and upward distances. ALWAYS be aware of load weights prior to attempting lift and placement with this machine.
- DO NOT exceed the machine's rated operating capacity for the type of attachment tool being used.
- DO NOT allow minors or any unqualified personnel to operate or be near the machine unless properly supervised.
- DO NOT start the engine or operate any controls unless properly seated in the operator's seat!
- DO NOT run the engine in an enclosed area without providing proper ventilation for the exhaust. Exhaust gases contain carbon monoxide, an odorless and deadly gas. Internal combustion engines deplete the oxygen supply within enclosed spaces and may create a serious hazard unless the oxygen is replaced. This includes the atmosphere within the cab when equipped.
- DO NOT leave the operator's station with the boom and attachment tool raised. ALWAYS lower the boom and attachment tool to the ground, shut off the engine and engage the park brake before leaving the operator's station.
- NEVER travel with the boom above the carry position (attachment tool should be at minimum ground clearance.) Boom should be fully retracted.
- DO NOT drive too close to an excavation or ditch. BE SURE that the surrounding ground has adequate strength to support the weight of the machine and the load it is carrying.

Chapter 5

INDICATORS AND CONTROLS

CAUTION

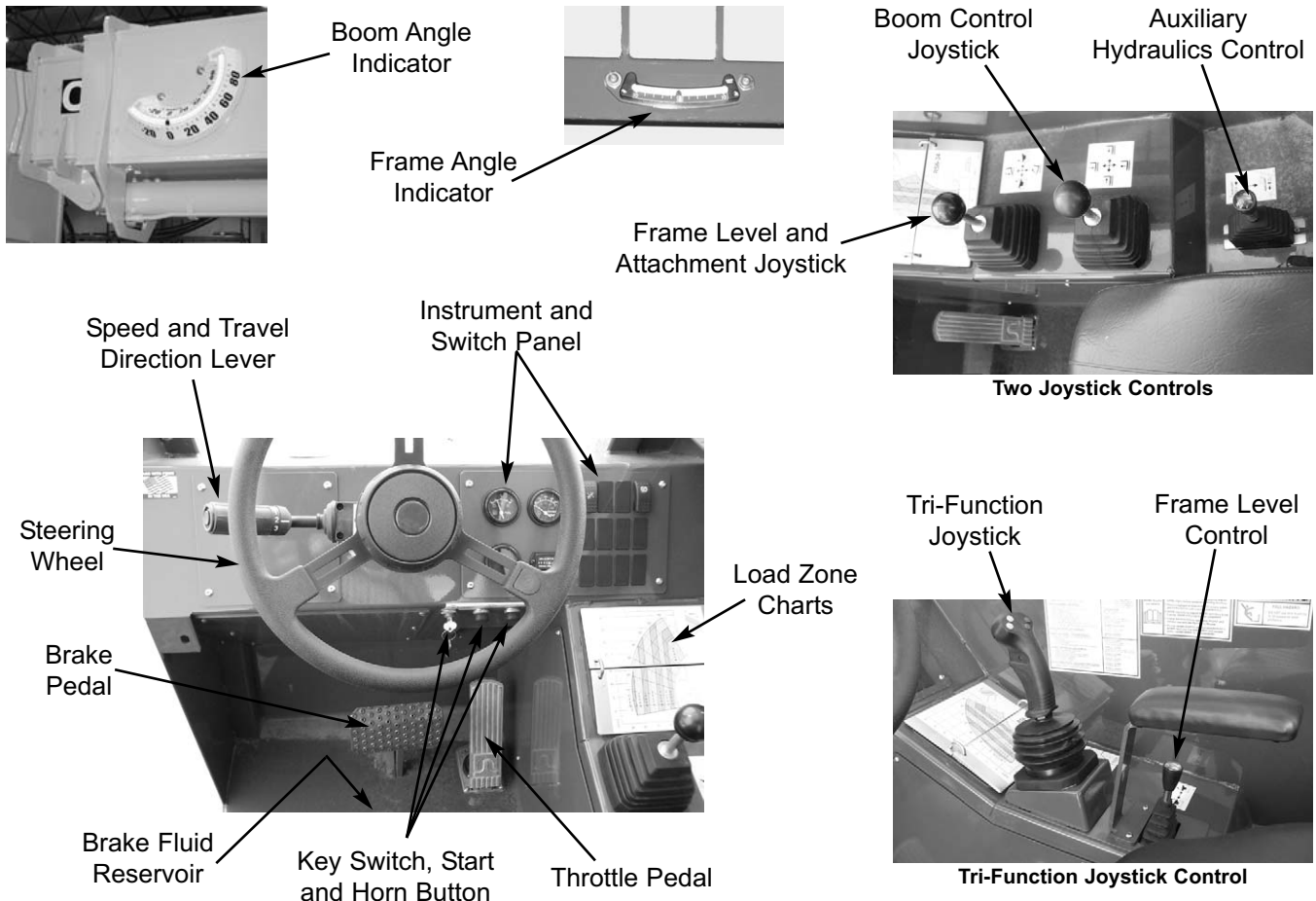
Become familiar with and know how to use **ALL** safety devices and controls on the Telescopic Handler **BEFORE** operating it. Know how to stop the machine operation **BEFORE** operating it. This Gehl machine is designed and intended to be used **ONLY** with a Gehl Company attachment tool, or a Gehl Company approved accessory or referral attachment tool. Gehl Company cannot be responsible for product safety if the machine is used with a non-approved accessory or attachment tool.

GUARDS AND SHIELDS

Whenever possible and without affecting machine operation, guards and shields are used to protect potentially hazardous areas. In many places, decals are also provided to warn of potential hazards and to display special operating procedures.

WARNING

Read and thoroughly understand all safety decals on the Telescopic Handler **BEFORE** operating it. **DO NOT** operate the machine unless all factory-installed guards and shields are properly secured in place.



Operator's Compartment and Indicators/Controls Locations

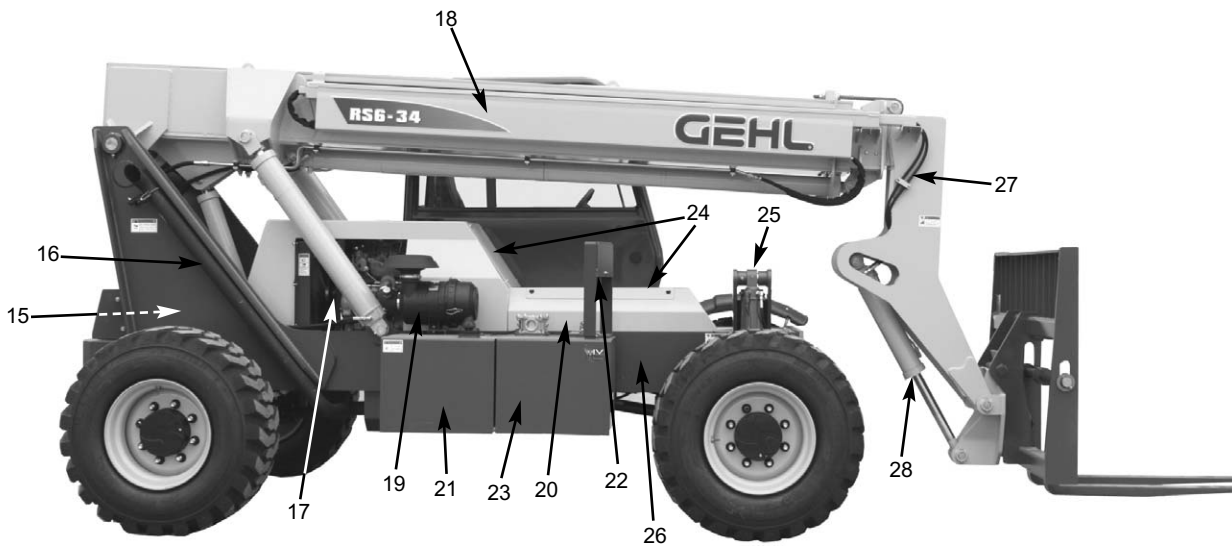
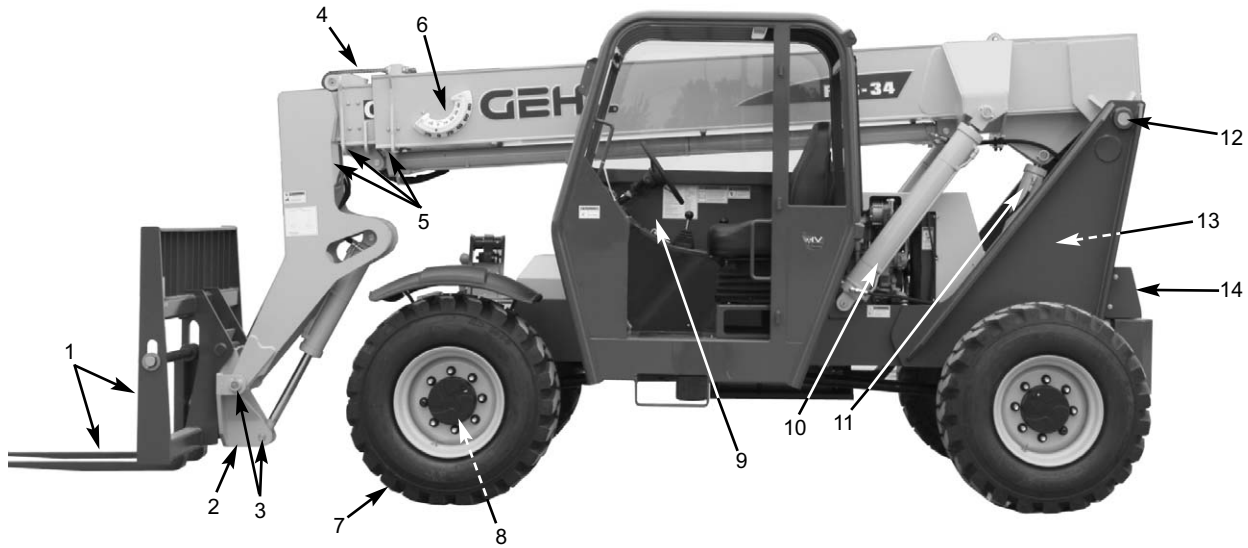
Pre-Start Walk-Around Inspection Illustration

PRE-START WALK-AROUND INSPECTION PROCEDURE

Refer to the following illustration and checklist to perform the inspection. Begin with item 1 at the left front of the machine and walk toward the rear of the machine on the left side and around the back and toward the front on the right side of the machine.

Any needed repairs or service noted during the inspection must be performed by a qualified service technician before operating the machine.

The illustration and checklist page can be copied for future pre-start walk-around inspections.



NOTE: If the light is flashing, apply the service brakes until the light stops flashing.

WARNING

ALWAYS check the PWP System for proper operation prior to use. (See page 53 for PWP System checking procedure.)

When the PWP System is active:

- transmission is de-clutched into Neutral,
- parking brake is applied,
- auxiliary hydraulic and carriage tilt and swing functions are disabled,
- machine inclination sensor is activated, with the result that the Telescopic Handler must be level laterally (side-to-side) and longitudinally (front-to-back) to within the factory pre-set limits before the boom control joystick will function, and
- remote shutdown switch is activated, meaning that the switch must be connected and in the “on” position for the boom control joystick to function. Pressing the shutdown switch will disengage the boom control joystick, and stop all platform movement. The remote shutdown switch box is supplied with a coiled electrical cable that must be connected to the outlet on the front of the innermost boom section near the carriage. The switch must be accessible by the platform personnel at all times when the platform is to be moved.

To de-activate the PWP System, apply and hold the service brakes on for three or more seconds, and press the bottom of the PWP System rocker switch. The system is de-activated when the lamp in the PWP System rocker switch is off.

NOTE: If the lamp in the PWP system rocker switch is flashing, apply the service brakes until the lamp goes off.

WARNING

In an emergency, if the platform worker has activated the remote shut-off switch and then is not able to re-activate the switch, such as if the worker fainted, then the Telescopic Handler operator is permitted to turn off the PWP System to regain control of the boom functions, in order to lower the work platform and come to the aid of the worker. But, understand this is only permitted in case of an emergency. Otherwise, the PWP System must be used at all times when there are workers on the platform. This is the only exception!

ROAD TRAVEL

For short distance highway travel, attach a Slow-Moving Vehicle (SMV) emblem (purchased locally) to the rear of the Telescopic Handler. For highway operation, obtain and install an amber flashing beacon.

NOTE: ALWAYS follow ALL state and local regulations regarding the operation of equipment on or across public highways. Whenever there is an appreciable distance between jobsites, or if driving on public highway is prohibited, transport the machine using a vehicle of appropriate size and capacity.

TRANSPORTING BETWEEN JOBSITES

ALWAYS abide by the following recommended procedures and guidelines when using ramps to load the machine onto (and unload it from) a truck or trailer. Failure to heed can result in damage to equipment and serious personal injury or death!

Tie-down eyes are provided for inserting chains through to secure the machine during transporting.



Front Tie-Down



Rear Tie-Down

- Repeat the procedure with the frame tilted to the left.
- Return the frame to a level position after the checks.

De-activation Tests

To test the PWP System de-activation logic:

1. Turn the key switch to “OFF” and wait for the engine to stop. Then turn the key switch back to “ON.”
 - The PWP switch lamp and the parking brake switch lamp should both be illuminated.
2. Turn the key switch to “OFF” and then turn the PWP rocker switch to “OFF.” Turn the key switch back to “ON.”
 - The PWP switch lamp should be flashing and the parking brake switch lamp should be on continuously.
3. Start the engine and apply the service brakes.
 - The PWP switch lamp and the parking brake switch lamp should go off after approximately three seconds of brake pedal application.

If PWP System fails to perform properly, troubleshoot using the chart on page 63. Contact your dealer for service information and parts.

Service Every 50 Hours or Weekly

LUBRICATE GREASE POINTS

Refer to the *Lubrication* chapter of this manual for grease fitting locations and other related details.

100 Hours (New Machine Only)

The following initial oil and filter changes should be performed at 100 hours on a new machine. Thereafter these changes should be performed at the regular maintenance intervals. Refer to the maintenance schedules for the necessary procedures.

Engine Oil and Filter	(250 Hours)
Transmission Oil and Filter	(1000 Hours)
Hydraulic Return Filter Element	(1000 Hours)

Torque the boom chains after the first 100 hours of operation on new machines or anytime a chain has been replaced. Thereafter the boom chains should be

inspected for wear and proper tension at the regular service interval of 250 hours. Refer to the boom chain torquing procedure in the 250 hour service interval.

Service Every 250 Hours or Quarterly

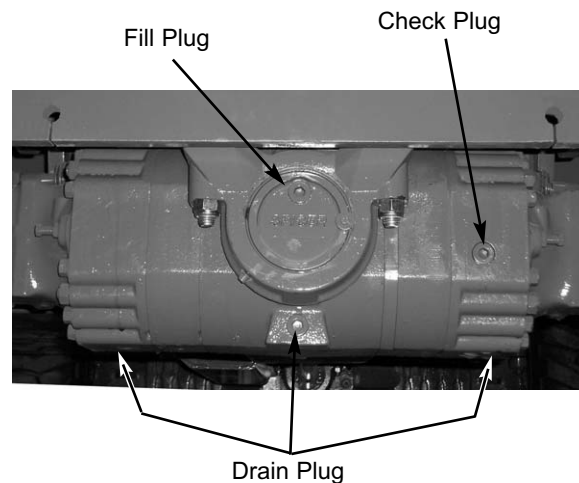
NOTE: Perform all other service requirements up to this point, as well as the following:

CHECKING AXLE OIL LEVELS

Differentials

NOTE: The Telescopic Handler should be on a level surface for this procedure.

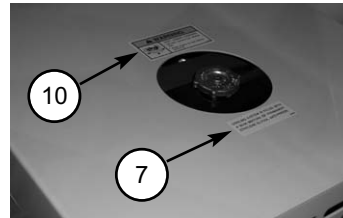
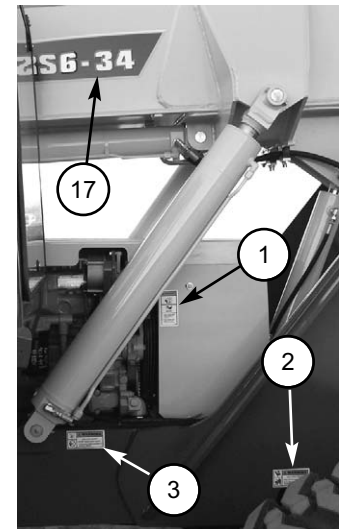
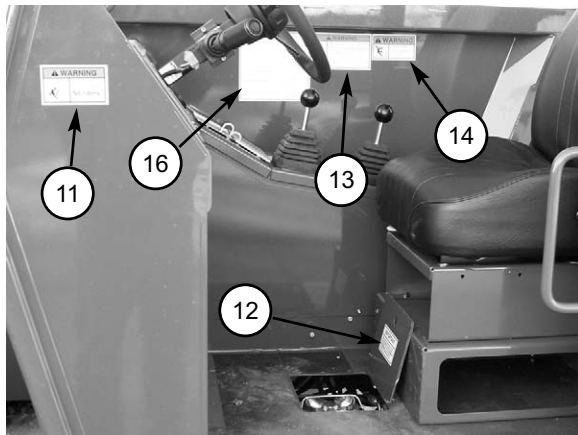
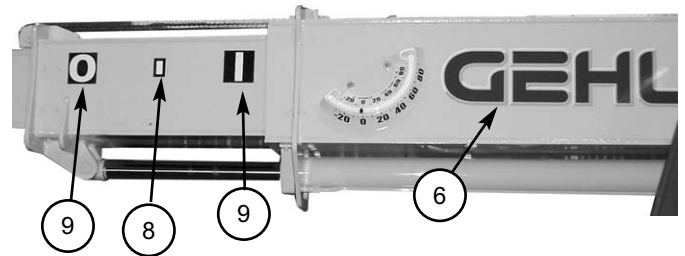
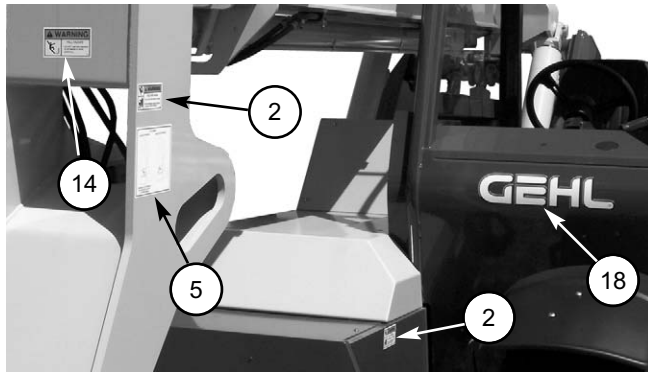
Remove the oil check plug. See illustration below. Oil should flow from the hole. If low, remove the oil fill plug and add oil until it flows from the check hole. Replace the plug, wait 10 to 15 minutes and repeat the fill procedure. Continue this process until the differential is full. See the *Lubrication* chapter for the proper oil specification. Replace the check and fill plugs.



Planetary Hubs

NOTE: The planetary hubs can be checked without jacking up the machine.

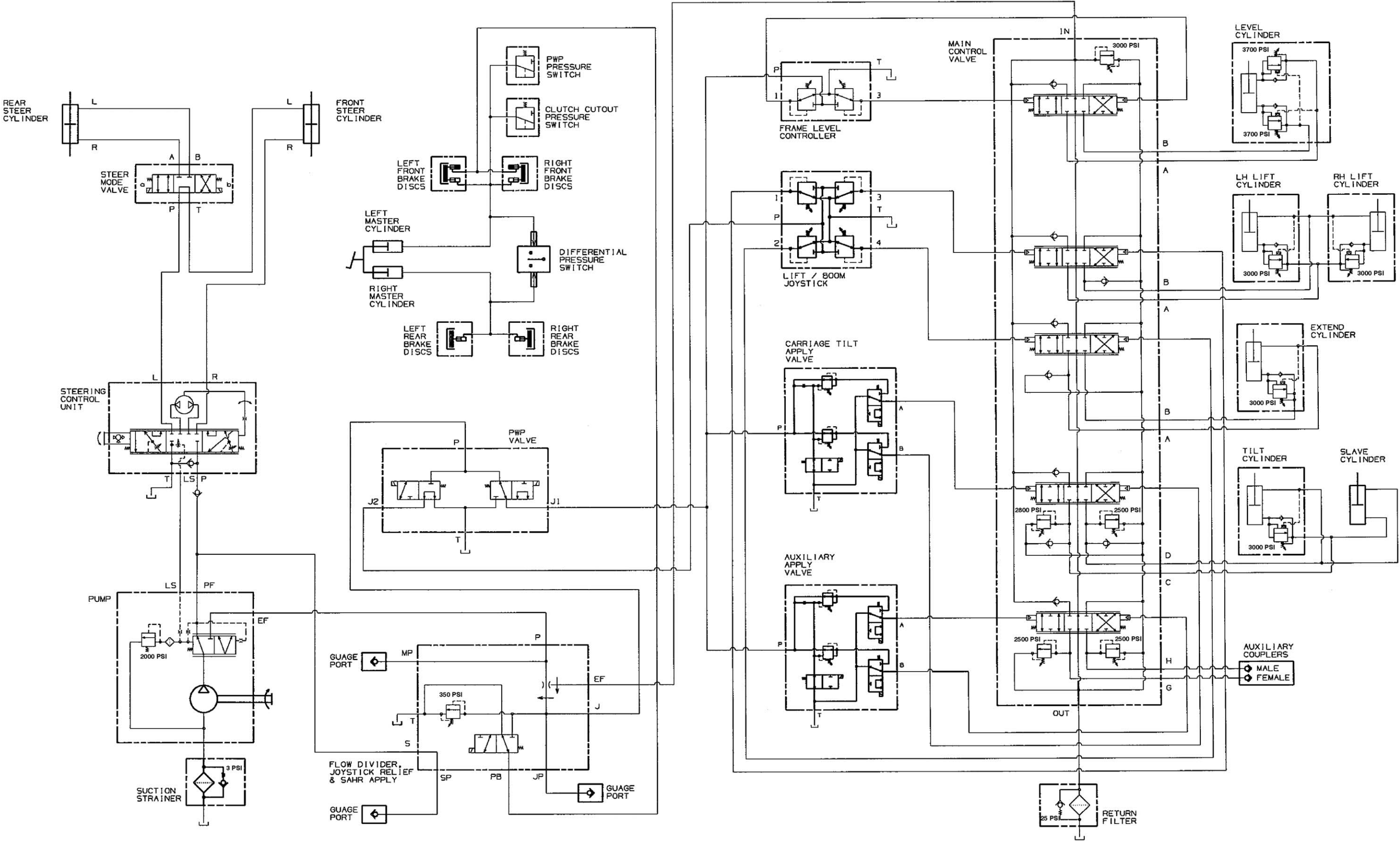
The planetary hubs have one plug each used for filling and draining. See illustration below. For checking the level and filling, position the wheel until the oil level arrow is horizontal. Remove the plug. If oil does not run out, add oil until it overflows. Check the remaining hubs the same way. Refer to the oil specifications found in the *Lubrication* chapter of this manual.



DECAL LOCATIONS - FRAME AND BOOM

REF. NO.	DESCRIPTION	PART NO.
01	DANGER - HANDS OUT	L70305
02	WARNING - PINCH POINT	L65927
03	WARNING - JUMP START	L65933
04	GEHL, 5.00"	102027
05	QUICK-ATTACH DIAGRAM	L65937
06	GEHL, 6.75"	184069
07	ANTI-FREEZE	056859
08	HALF ZONE MARKER (5 ea.)	L62583
09	NO. "0" EXTENSION MARKER (1 ea.)	L67718
	NO. "1" EXTENSION MARKER (1 ea.)	L67719
10	NO. "2" EXTENSION MARKER (1 ea.)	L67720
	NO. "3" EXTENSION MARKER (1 ea.)	L67721
	NO. "4" EXTENSION MARKER (1 ea.)	L67722
	NO. "5" EXTENSION MARKER (1 ea.)	L67723
	COOLANT UNDER PRESSURE	072798
11	WARNING - NO RIDERS	L65932
12	BRAKE FLUID	L63474
13	OPERATOR MANUAL WARNING	100359
14	DANGER - PERSONNEL INJURY (units without PWP)	L65928
15	CARRY LOAD LOW	L65926
16	LUBE CHART	103229
17	RS6-34 LH	104871
18	GEHL, 3.75"	184043

Hydraulic Schematic for Tri-Function Joystick with PWP



CLICK HERE TO **DOWNLOAD** THE COMPLETE MANUAL

- Thank you very much for reading the preview of the manual.
- You can download the complete manual from: www.heydownloads.com by clicking the link below



- Please note: If there is no response to CLICKING the link, please download this PDF first and then click on it.

CLICK HERE TO **DOWNLOAD** THE COMPLETE MANUAL