

OPERATOR'S MANUAL

MOUNTED LIQUID SPRAYER

LS1125

LS1130BL

LS1130

LS1140



FRONTIER

CLICK HERE TO **DOWNLOAD** THE COMPLETE MANUAL

- Thank you very much for reading the preview of the manual.
- You can download the complete manual from: www.heydownloads.com by clicking the link below



- Please note: If there is no response to CLICKING the link, please download this PDF first and then click on it.

CLICK HERE TO **DOWNLOAD** THE COMPLETE MANUAL

Hydraulic Safety



The hydraulic system operates under extremely high pressure. Escaping fluid under pressure can penetrate the skin causing serious injury.

If an accident occurs, seek medical assistance immediately. **DO NOT DELAY.** Any fluid injected into the skin must be surgically removed. Serious infection or toxic reaction can develop from hydraulic fluid piercing skin surface.

Doctors unfamiliar with the is type of injury should reference a knowledgeable medical source. Such information is available from Deere & Company Medical Department in Moline, Illinois, USA.

Avoid the hazard by relieving pressure before disconnecting hydraulic or other lines.

Tighten all connections before applying pressure.

Replace worn, cut, abraded, flattened or crimped hoses.

Do not attempt makeshift repairs to hydraulic lines, fittings or hoses by using tape, clamps or cements.

Check for leaks with a piece of cardboard, Do Not use your hands to check for leaks. Protect hands and body from high-pressure fluids.

Avoid Heating Near Pressurized Fluid Lines



Flammable spray can be generated by heating near pressurized fluid lines, resulting in severe burns to yourself or bystanders.

Do not heat by welding, soldering, or using a torch near pressurized fluid lines or other flammable materials. Pressurized lines can be accidentally cut when heat goes beyond the immediate flame area.

Waste Disposal Safety

Improper disposal of waste can threaten the environment and ecology. Potentially harmful waste used with John Deere equipment includes oil, coolant, brake fluid, filters, and batteries.

Use leak-proof containers when draining fluids. Do not use food or beverage containers that may mislead someone into drinking from them.

Do not pour waste onto the ground, down a drain, or into any water source.

Follow instructions on chemical containers or SDS sheets for disposal of chemicals, containers, and water used for cleaning the equipment.

Safety Signs (Decals)

Keep safety signs in good condition.

Replace missing or damaged safety signs.

Be sure new equipment components and repair parts include the current safety signs.

Replacement signs are available from your John Deere dealer.

Connect PTO Pump

When the sprayer is operated with a PTO Pump the hoses will need to be connected.

1. The hoses are zip tied to the center boom for shipping. Clip the zip ties to release hoses.



2. Attach the 1.25" yellow hose to the inlet side of the PTO pump.
 - Loosen clamp and slide hose onto the left PTO fitting.
 - Tighten clamp.



3. Attach hose to sprayer.
 - Loosen clamp.
 - Slide hose onto pump fitting.
 - Tighten clamp.



4. Attach the 1" black hose to the outlet side of the PTO pump.
 - Loosen clamp.
 - Slide hose onto right side fitting on PTO.
 - Tighten clamp



5. Route hose under tank and through support on main frame.

ATTACH SPRAYER TO TRACTOR

Keep hands and body out of hitch area when attaching to the tractor.

Clear area of bystanders.

Use caution when connecting controls to avoid pinch points.

NOTE: The 3 point hitch on your tractor may be different than the 3 point hitch shown. Consult the owner manual for the 3 point hitch equipped on the tractor.

1. Lower the lift arms on the tractor to the lowest point.
2. Align the lift arms with the sprayer hitch.



3. Back up slowly until the lift arms make contact with the hitch and are in position under the hitch pins.



NOTE: If using external hitch controls stop tractor engine, place all controls in neutral, set parking brake, and wait for all moving parts to stop before leaving the tractor seat.

4. Slowly raise the lift arms to hook onto the sprayer hitch pins.



Caution: Avoid crushing! Keep away from sprayer and hitch area when raising.



5. Check that all three lift arms have locked on to the sprayer hitch.

Fill the Tank

Read and follow the chemical manufacturer's warnings and follow instructions exactly.

Put on the PPE required on the chemical SDS sheet.

Clear bystanders from the area.

Know your working location and how to seek medical attention in an emergency.

Do not put your head or body into the tank.

Keep face away from tank when opening to avoid pressurized chemical spray or vapor.

Keep hands on top of tank lid when turning to avoid pinching injury.

1. Transport the sprayer to the fill area, or fill truck in the field.
2. Lower the sprayer to the ground.
3. Stop tractor engine, place all controls in neutral, set parking brake, remove ignition key and wait for all moving parts to stop before filling tank.
4. Inspect tank straps. Check for damage or worn straps. Replace straps if damaged or worn.



•Tighten strap and strap hardware if straps are loose.

5. Calculate the exact amount of chemical and water needed for the job.

IMPORTANT: Follow chemical manufacturer instructions exactly.

6. Close the tank valve.



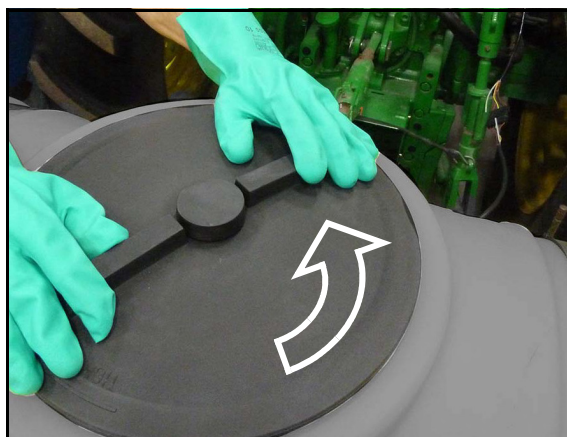
•Turn valve handle 90° from hose line.

NOTE: Clean dirt and dust from the tank cover and surrounding tank to prevent getting dirt in the tank.



CAUTION: Keep face away and open the tank cover slowly, pressurized chemical vapors or mist may escape.

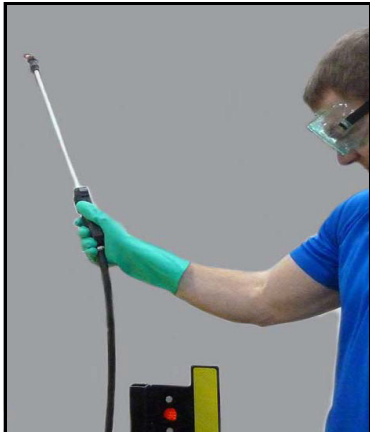
7. Remove tank cover.



•Turn the cover counter clockwise to open.

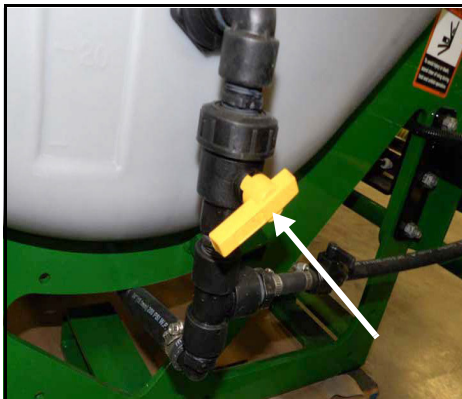
CAUTION: Use caution removing wand from holder. Keep nozzle pointed away from you at all times.

7. Remove wand from the holder.



- Pull up on the wand handle until the wand clears the holder.
- Be careful to keep the nozzle pointed away from you.

8. Set the tank agitation valve half way between open and closed.



- Close the valve more to increase pressure to wand.
- Open the valve more to decrease pressure to wand.

IMPORTANT: Do not fully close the agitation valve while operating the wand. Excess pressure may damage chemical pump and spray wand.

9. Open the wand valve.



- Turn handle in line with hose

10. Point the wand at the spray target and squeeze the trigger on the wand to spray.



- Pull hose from the reel as needed to reach area to be sprayed.

11. Release wand trigger to stop spray.

Cleaning to Remove Salt and Amines Formations

Perform this cleaning cycle with changing chemicals and/or annually:

1. Follow the procedure for daily cleaning.
2. Remove screens and nozzles and wash separately.
3. Add 50 gallons (200 liters) of clean water to the tank.
4. Add 1/2 gallon (2 liters) of household ammonia to the tank. (1-part ammonia to 100 parts water).
5. Run the agitation pump for 5 minutes.
6. Spray half the solution out of the booms.
7. Let the balance sit for a minimum of 8 hours, overnight is best.
8. Run agitation pump for 10 minutes.
9. Spray solutions out of booms on the appropriate crop.
10. Rinse the system thoroughly with clean water and flush out the booms.
11. Drain the entire system and let dry.

Cleaning to Remove Esters of 2, 4-D and MCPA Formations

Perform this cleaning cycle when changing chemicals or annually:

1. Complete the daily cleaning.
2. Remove nozzles and screens and wash separately.
3. Add 50 gallons (200 liters) clean water to the tank.
4. Add dishwasher detergent to the tank (2 lbs/ 50 gal or 1kg/300 l of water).
5. Run agitation pump for 10 minutes.
6. Spray the solution out of the booms on appropriate crop and drain thoroughly.
7. Add 50 gal (200 L) of clean water to tank.
8. Add 1/2 gal (2 L) of household ammonia to the tank (1-part ammonia to 100 parts water).
9. Run agitation pump for 10 minutes.
10. Spray 1/2 the solution out of the booms.
11. Let the balance sit for a minimum of 8 hours, overnight is best.
12. Run the agitation pump for 10 minutes.
13. Spray out of the booms on the appropriate crop.
14. Rinse the system thoroughly with clean water and flush out the booms.
15. Drain entire system and let dry.

STORAGE AND WINTERIZING

Store sprayer away from human activity.

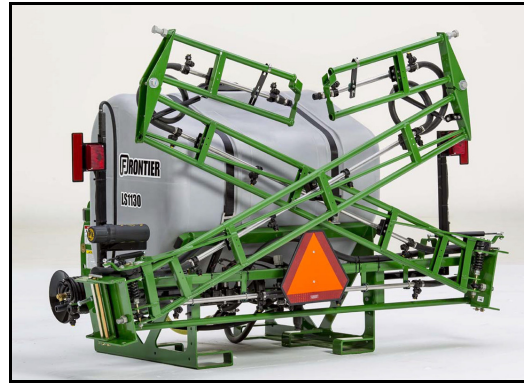
Do Not allow children to play on or around sprayer.

At the end of the spray season, the sprayer must be thoroughly inspected and prepared for storage. Repair or replace any worn or damaged components to prevent unnecessary down time at the beginning of the next season.

Prepare for Storage:

1. Thoroughly wash the machine using a hose or pressure washer to remove all dirt, mud, debris and residue.
2. Thoroughly wash the inside of the tank and spray system to remove all chemical residue. See *"TANK MAINTENANCE AND SERVICE"* on page 54.
3. Completely drain the tank. See *"Tank Drain Procedure"* on page 54.
4. Lubricate all grease points. See *"Grease Points"* on page 49.
5. Inspect all hoses, couplers and fittings. Tighten any loose fittings. Replace any hose that is damaged or worn.
6. Touch up all paint nicks and scratches to prevent rusting.
7. The tank is made out of polyethylene. Do not use to store petroleum products. They will soften the plastic and adsorb the product.
8. It is best to store the sprayer away from direct sunlight to minimize the long term effects of ultraviolet radiation on the plastic. If indoor storage or shade is not available cover the tank with a tarpaulin and secure in place.

Store sprayer in transport position



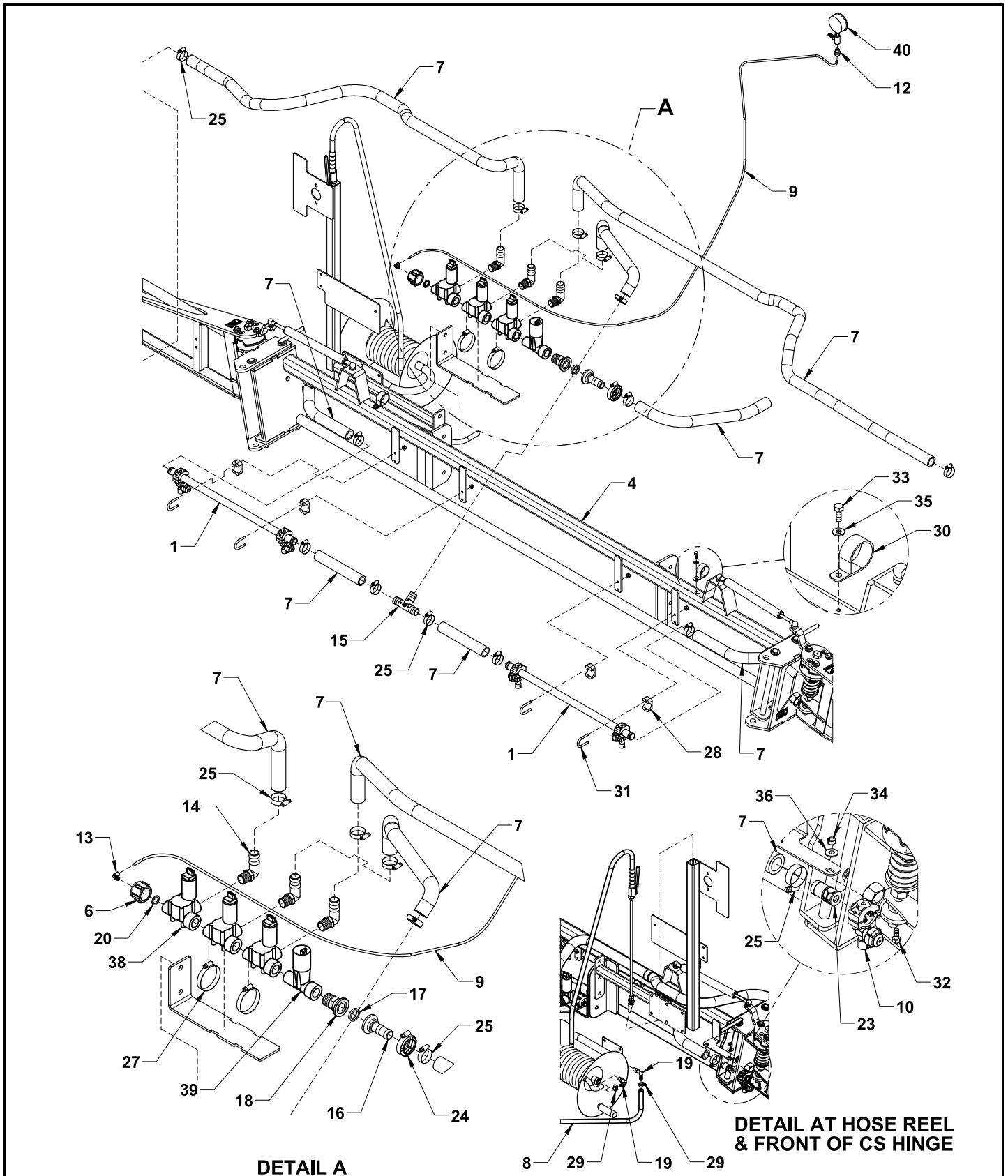
In cold climates that encounter freezing temperatures over the storage period, the following preparation must be done:

1. Remove the line caps at the end of the stainless steel wet booms.



2. Connect an air compressor and blow the lines out until no water remains.
3. Replace end caps.
4. Add 10 gallons (40 liters) of a 50:50 mixture of portable RV antifreeze to the tank.
5. Circulate the antifreeze through the systems

BOOM CENTER SECTION AND VALVE PLUMBING- 20 IN. SPACING



BOOMLESS CENTER SECTION AND VALVE PLUMBING PARTS LIST

ITEM	PART NO.	QTY	DESCRIPTION
1	5FT18128	1	CAP, 1" WITH TAPPED HOLE
2	5FT500061	2	VALVE, BOOM SHUT OFF
3	5FT510016S	AR	HOSE, 1" EPDM
4	5FT510019S	AR	HOSE, 3/4" EPDM
5	5FT510020S	AR	HOSE, 3/8" EPDM
6	5FT510023S	AR	HOSE, 1/4" POLY BLACK
7	5FT520005	2	NOZZLE, SINGLE
8	5FT520055	2	NOZZLE, BOOMLESS
9	5FT530001	1	MALE CONNECTOR, 1/4" X 1/4"
10	5FT530004	1	CONNECTOR, 90° 1/4" TUBE X 1/4" NPT
11	5FT530040	2	FITTING, 3/4" MPT X 3/4" HB
12	5FT530066	1	HOSE BARB, 1" MANIFOLD X 1"
13	5FT530068	1	GASKET, 1" EPDM
14	5FT530069	1	FLANGE, 1" MANIFOLD X 1" MPT
15	5FT530209	2	HOSE BARB, 3/8 NPT X 3/8 90°
16	5FT530227	1	GASKET, VINYL BLACK 3/4IDX1
17	5FT540000	1	CLAMP, WORM SCREW 1"
18	5FT540013	4	CLAMP, HOSE SS 3/4" #12
19	5FT540014	1	CLAMP, HOSE SS 1" #16
20	5FT540019	2	CLAMP, HOSE 3" SS #48
21	5FT540032	2	CLAMP, HOSE SS 5/16" #5
22	5FT540034	2	CLAMP, VARI-QUICK 1-1/2"
23	5FT632009	1	REGULATOR, ELECT. PRESSURE
24	5FT790044	1	GAUGE, 200PSI

CLICK HERE TO **DOWNLOAD** THE COMPLETE MANUAL

- Thank you very much for reading the preview of the manual.
- You can download the complete manual from: www.heydownloads.com by clicking the link below



- Please note: If there is no response to CLICKING the link, please download this PDF first and then click on it.

CLICK HERE TO **DOWNLOAD** THE COMPLETE MANUAL