

OPERATOR'S MANUAL

CARTED WHEEL RAKE

WR6008

WR6010

WR6012



FRONTIER

OMUS00W6F (07/04/13)

CLICK HERE TO **DOWNLOAD** THE COMPLETE MANUAL

- Thank you very much for reading the preview of the manual.
- You can download the complete manual from: www.heydownloads.com by clicking the link below



- Please note: If there is no response to CLICKING the link, please download this PDF first and then click on it.

CLICK HERE TO **DOWNLOAD** THE COMPLETE MANUAL

SAFETY

REMOVE PAINT BEFORE WELDING OR HEATING

Avoid potentially toxic fumes and dust.

Hazardous fumes can be generated when paint is heated by welding, soldering, or using a torch.

Do all work outside or in a well ventilated area. Dispose of paint and solvent properly.

Remove paint before welding or heating:

- If you sand or grind paint, avoid breathing the dust. Wear an approved respirator.
- If you use solvent or paint stripper, remove stripper with soap and water before welding. Remove solvent or paint stripper containers and other flammable material from area. Allow fumes to disperse at least 15 minutes before welding or heating.



AVOID HEATING NEAR PRESSURIZED FLUID LINES

Flammable spray can be generated by heating near pressurized fluid lines, resulting in severe burns to yourself and bystanders. Do not heat by welding, soldering, or using a torch near pressurized fluid lines or other flammable materials. Pressurized lines can be accidentally cut when heat goes beyond the immediate flame area.



ATTACHING AND DETACHING

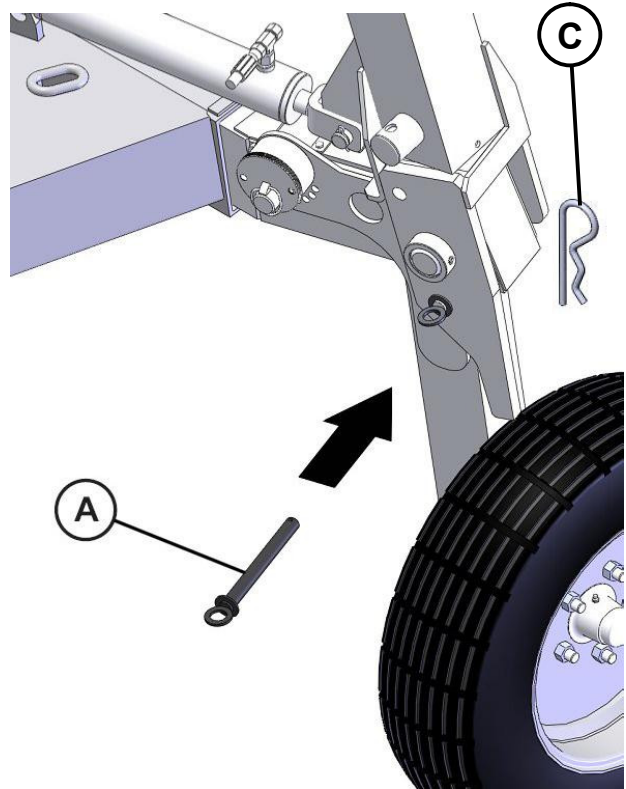
DETACHING RAKE FROM TRACTOR



CAUTION: To prevent personal injury caused by unexpected movement:

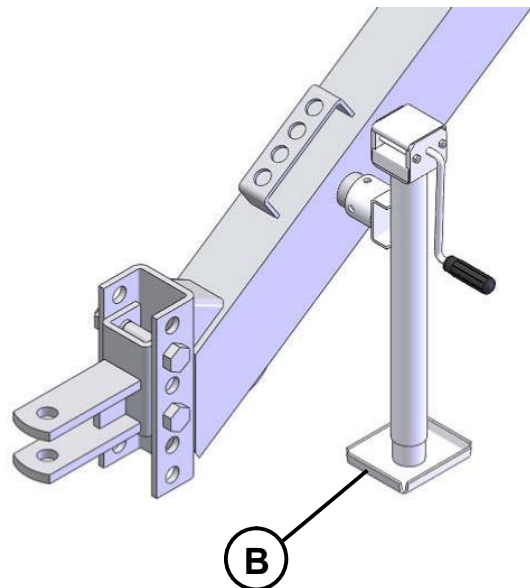
- Park machines on a level surface.
- Engage tractor parking brake and/or place transmission in "Park."
- Shut off tractor engine and remove key.

1. Park rake on level surface, or block ground wheels so machine cannot roll after detaching from tractor.
2. Lower rake wheels, or raise rake wheels .
 - If rake wheels are raised, install transport pins (A) through arm support brackets and fasten with spring-locking pins.
3. Engage tractor parking brake and/or place transmission in "Park."
4. Shut off tractor engine and remove key.
5. Push tractor SCV lever to the float position.



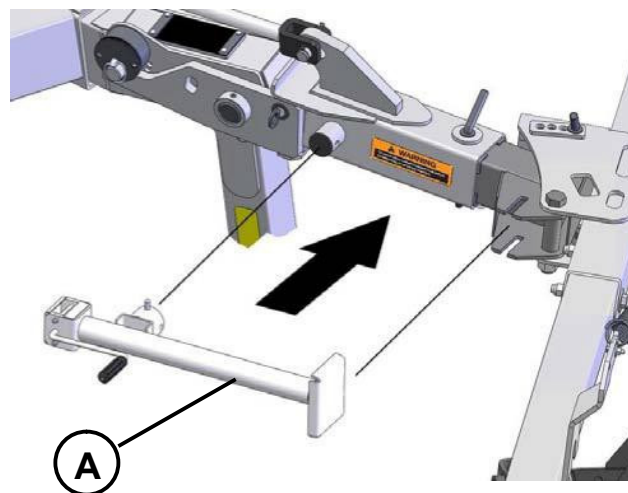
A—Transport Pins
B—Jackstand
C—Spring Lock Pin

6. Lower jackstand (B) and fasten with pin.
7. Adjust rake hitch to support weight of rake on jackstand.

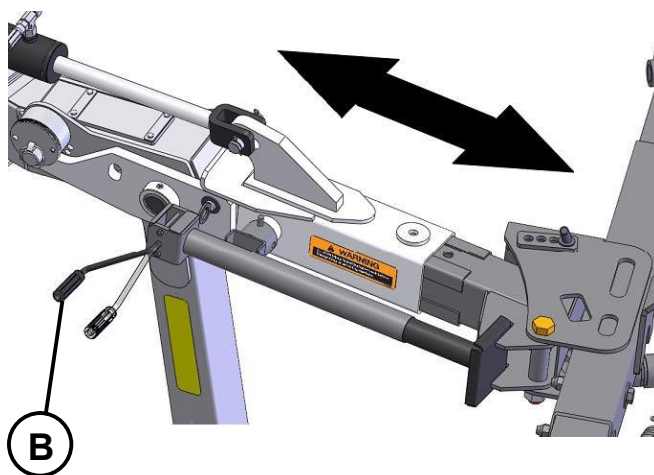


OPERATING THE RAKE

To easily operate the adjustment, you can use the jack stand that comes standard with the machine.
Position the jack stand (A) as shown in the picture.



Move the handle (B) of the jack stand to slide the frame inside or outside to desired position.



LUBRICATION AND MAINTENANCE

LUBRICANT STORAGE

Your equipment can operate at top efficiency only when clean lubricants are used.

Use clean containers to handle all lubricants.

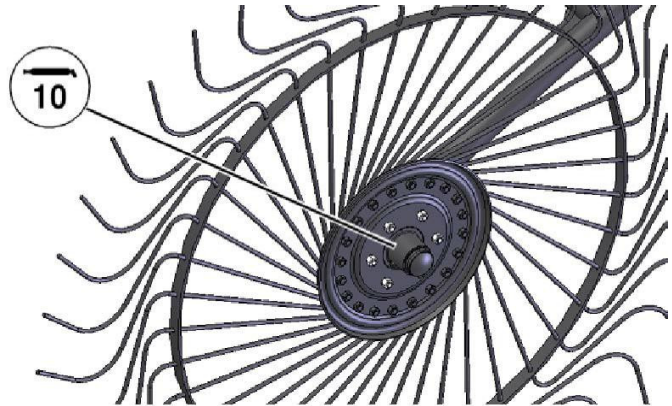
Whenever possible, store lubricants and containers in an area protected from dust, moisture, and other contamination. Store containers on their side to avoid water and dirt accumulation.

Make certain that all containers are properly marked to identify their contents.

Properly dispose of all old containers and any residual lubricant they may contain.

EVERY 10 HOURS

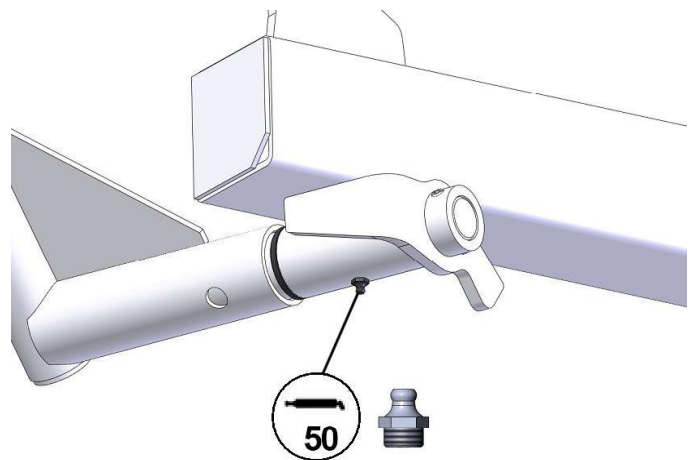
- Rake Wheels



EVERY 50 HOURS

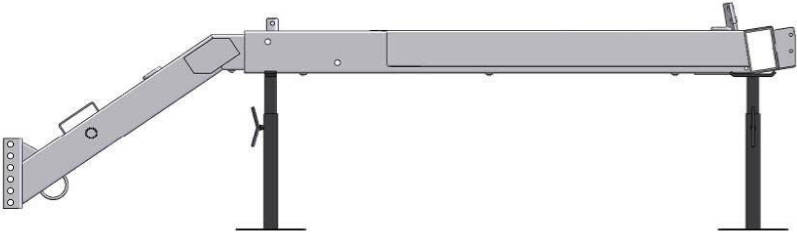
- Left-Hand and Right-Hand Finger wheel arms

Grease lightly.

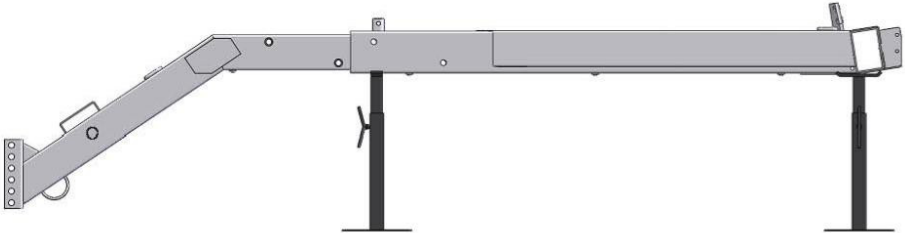


ASSEMBLY

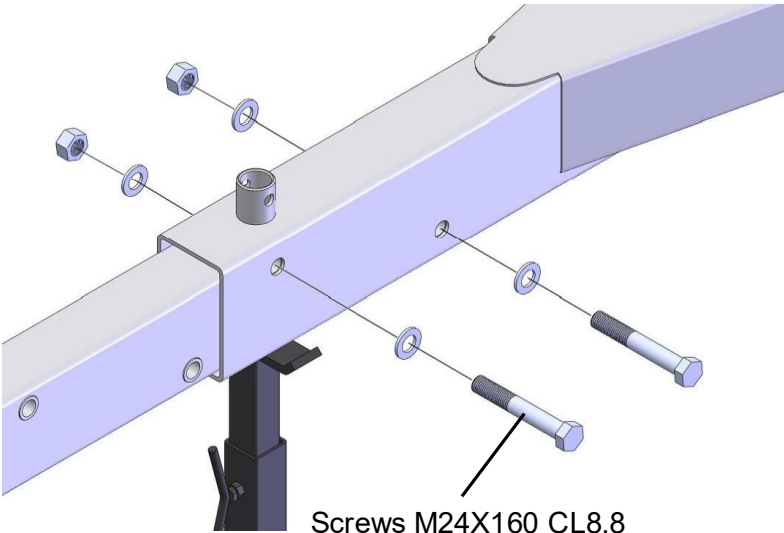
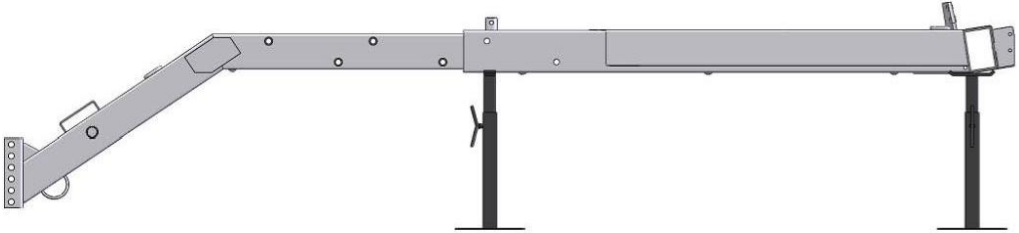
Drawbar position for WR6008



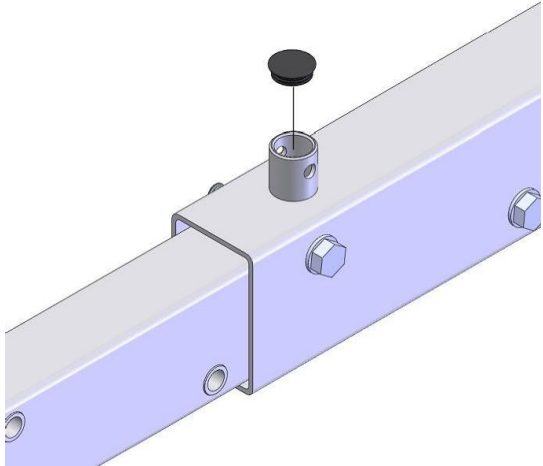
Drawbar position for WR6010



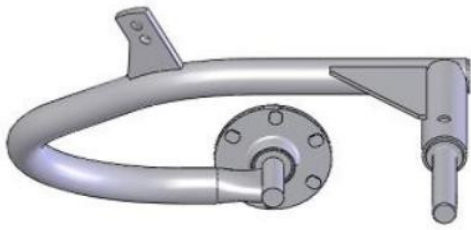
Drawbar position for WR6012



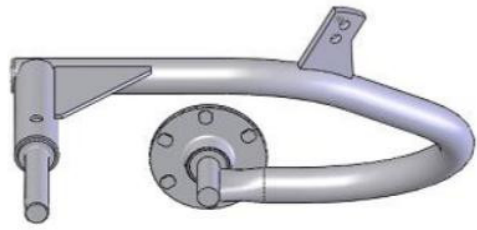
Screws M24X160 CL8.8
Tighten bolts to 200 N·m (150 lb-ft)



ASSEMBLY

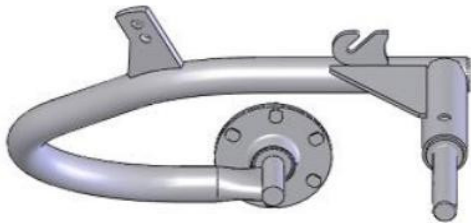


LH Rake arm

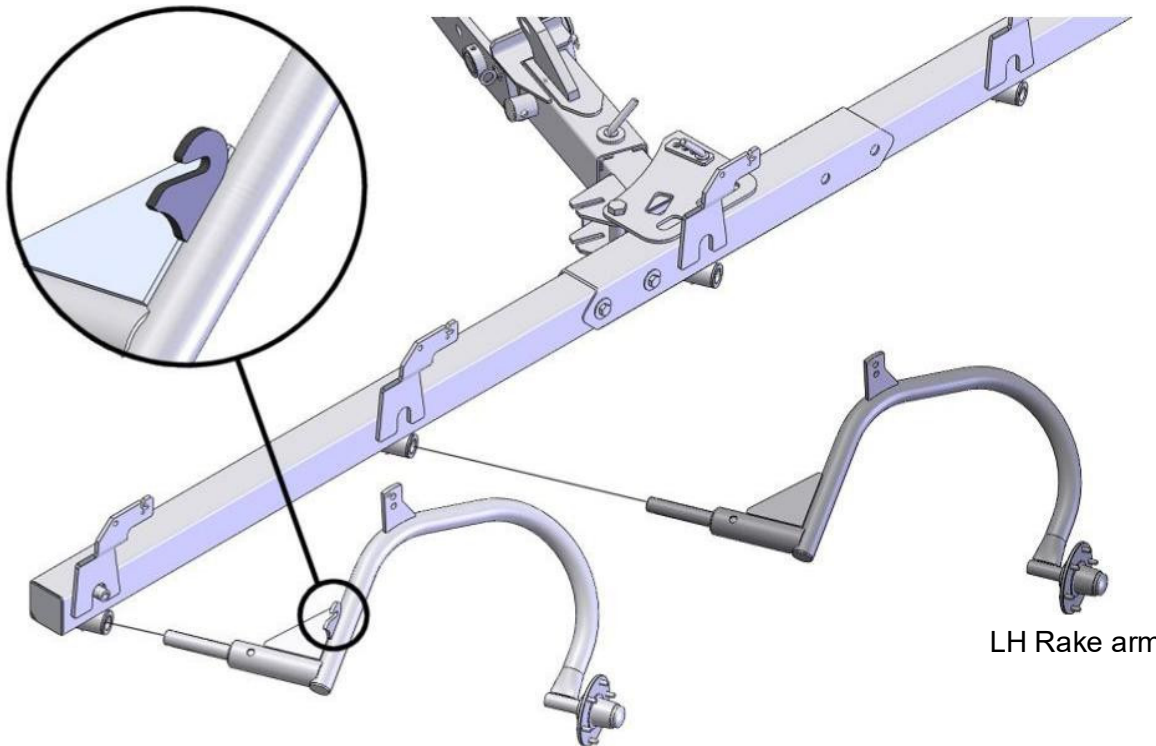
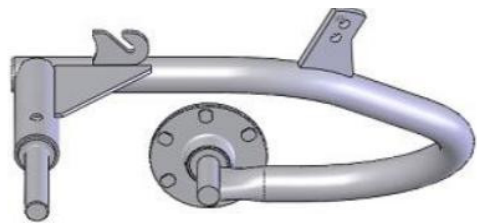


RH Rake arm

LH Front rake arm with hook



RH Front rake arm with hook



LH Rake arm

SPECIFICATIONS

WR60 CARTED WHEEL RAKE

Tractor Requirement:

Horsepower (Minimum)	22,4 kW (30 hp)
Hydraulic Pressure Required	8273 kPa (1200 psi) (83 bar)
Hydraulic Flow Required	23 L/min (6 gal/min)
Hydraulic Outlets	One remote outlet

Raking Width:

8 Wheel Rake	5.27 m (17 ft 3 in.) maximum
10 Wheel Rake	6.36 m (20 ft 10 in.) maximum
12 Wheel Rake	7.60 m (24 ft 11 in.) maximum

Windrow Width:

8 Wheel Rake	0.40 —2.27 m (1 ft 4 in. to 7 ft 6 in)
10 Wheel Rake	0.40 —2.27 m (1 ft 4 in. to 7 ft 6 in)
12 Wheel Rake	0.66 —2.53 m (2 ft 2 in. to 8 ft 4 in)

Overall Transport Width:

8 Wheel Rake	2.70 m (8 ft 10 in)
10 Wheel Rake	2.70 m (8 ft 10 in)
12 Wheel Rake	2.95 m (9 ft 8 in)

Transport Height

8 Wheel Rake	2.60 m (8 ft 6 in)
10 Wheel Rake	2.67 m (8 ft 9 in)
12 Wheel Rake	2.67 m (8 ft 9 in)

Overall Length:

8 Wheel Rake	6.64 m (21 ft 9 in)
10 Wheel Rake	7.09 m (23 ft 3 in)
12 Wheel Rake	7.58 m (25 ft 9 in)

Shipping Weight (Approximate):

8 Wheel Rake	919 kg (2026 lb)
10 Wheel Rake	1016 kg (2240 lb)
12 Wheel Rake	1141 kg (2515 lb)

Fold/Unfold Hydraulic cylinders

Adjustments:

Raking Width	Manual
Wheel Height	Manual
Wheel Ground Pressure	Manual
Windrow Width	Manual

Raking Wheels:

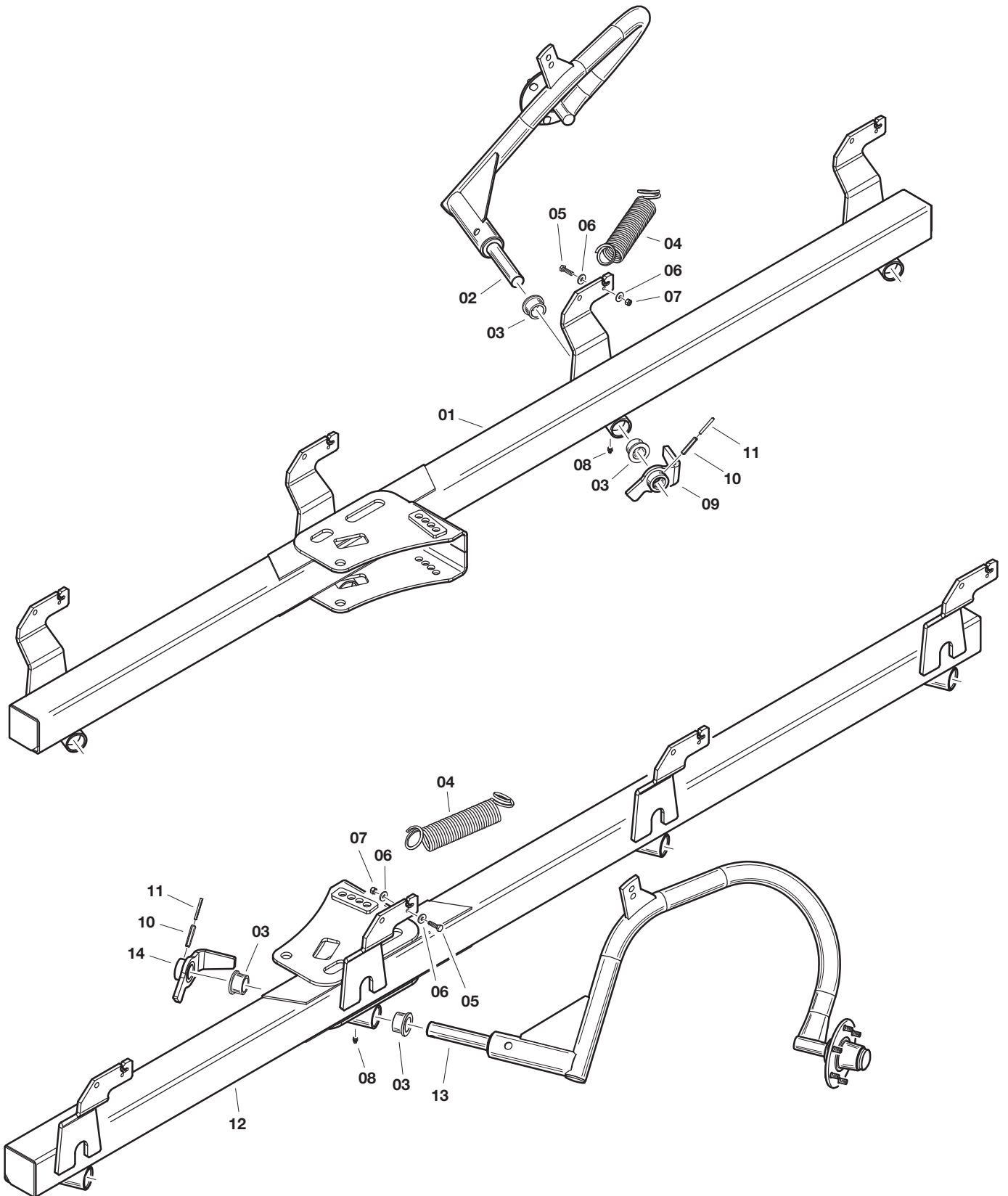
Drive System Ground Driven

Number of Ground Wheels:

8 Wheel Rake	2
10 Wheel Rake	2
12 Wheel Rake	2

Tires 205/75—15

FRAMES ASSEMBLY WR6008



CLICK HERE TO **DOWNLOAD** THE COMPLETE MANUAL

- Thank you very much for reading the preview of the manual.
- You can download the complete manual from: www.heydownloads.com by clicking the link below



- Please note: If there is no response to CLICKING the link, please download this PDF first and then click on it.

CLICK HERE TO **DOWNLOAD** THE COMPLETE MANUAL