

SLICER

Original Fendt Logo

911 TL

FAU 00101

911 TLKC

FAV 00101

911 TLRC

FAW 00101



CLICK HERE TO **DOWNLOAD** THE COMPLETE MANUAL

- Thank you very much for reading the preview of the manual.
- You can download the complete manual from: www.heydownloads.com by clicking the link below



- Please note: If there is no response to CLICKING the link, please download this PDF first and then click on it.

CLICK HERE TO **DOWNLOAD** THE COMPLETE MANUAL

Machine description

1 Machine description

1.1 Identification

Manufacturer: AGCO Feucht GmbH

Fellastraße 1-3

90537 Feucht

Germany

Telephone: +49 (0) 9128 73-0

Fax: +49 (0) 9128 73-210

1.2 Type plate and serial number

The serial number of your machine can be found on the type plate following the description Mach.-no. / Serial-No.:

The type plate (Abb 2) is riveted to the frame.



Abb 2. Type plate SLICER 911 TL

In addition, the machine/serial number is also stamped onto both cutter bars (Abb 3).

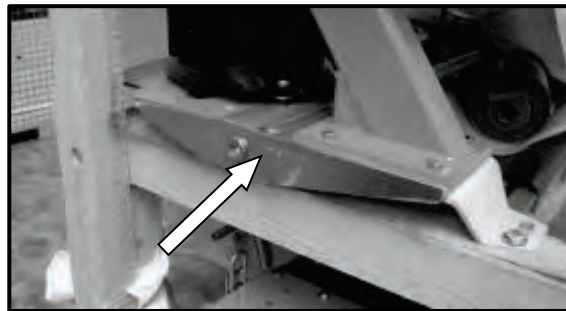


Abb 3. Stamped machine/serial number

1.3 Intended use

The disc mower is used to cut stalks that grow at ground level. To do so, it must be in the working position (machine lowered). This machine has been constructed exclusively for normal use with agricultural or similar tasks.

Any other use beyond this is considered improper. The manufacturer accepts no liability for any damage caused as a result of improper use. The user alone is responsible for this.

“Proper use” includes:

- Paying attention to all of the information on how to operate the machine in the operating instructions.
- Observing all safety instructions.
- Carrying out all inspections and maintenance work as instructed and when they are due.

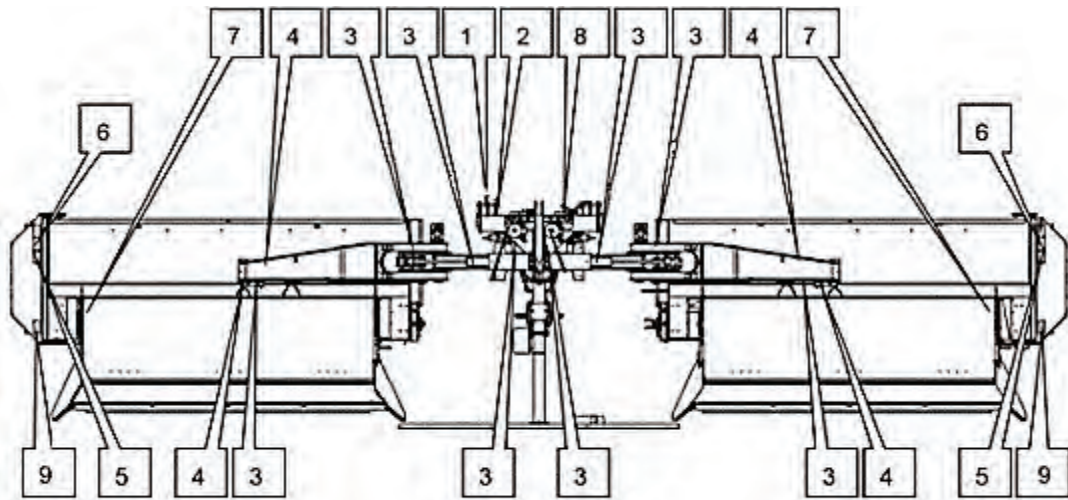
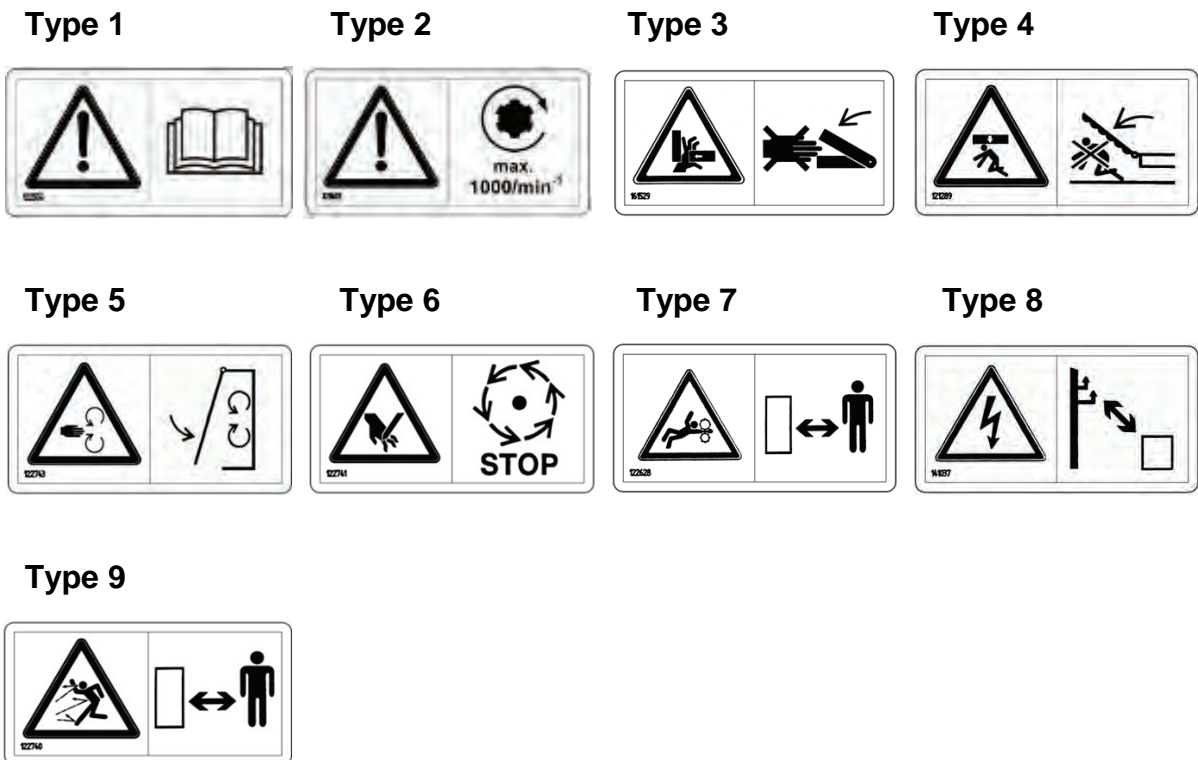


Abb 32. Warnings and hazard symbols on the machine



Initial operation

4.2.3 Connecting the hydraulic system to the tractor

You can find the hydraulic diagram of the machine's hydraulic system in the separate instructions that are stored in the document storage box.

- Inspect the hydraulic hose lines regularly and replace if showing signs of damage and ageing.
- Check the connections for leak-tightness (screws and nuts).
- Use a piece of board or wood for leak detection (Abb 57) and do not use your hands to carry out this search.

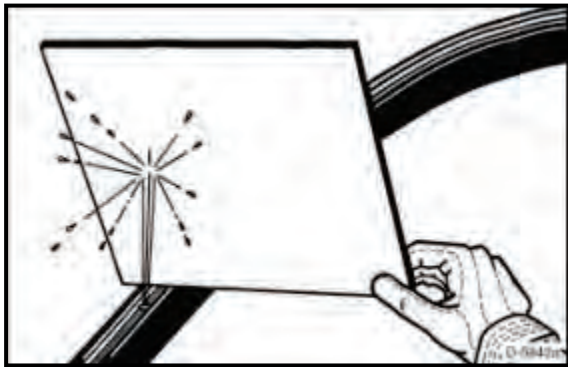


Abb 57. Leak detection with a piece of board

- Wear protective gloves and goggles to protect yourself from injury (Abb 58).
- Check the hydraulic hose connections are correct when attaching hydraulic cylinders and motors.



Abb 58. Use protective gloves and goggles

- Check that the hydraulic system works before driving on public roads.

WARNING

Risk of personal injury and material damage caused by fluid escaping under high pressure

Fluids (hydraulic oil) escaping under high pressure can penetrate the skin and cause serious injury (Abb 59).

- Seek immediate medical help in the event of injury – Risk of infection.
- Wear protective gloves and goggles when working on the machine's hydraulic system (Abb 58).



Abb 59. Risk of fluid injection

SAFETY INSTRUCTION

Before working on the hydraulic system:

- Set down the machine.
- Switch off the hydraulics and depressurize the hydraulic system.
- Switch off the engine.
- Remove the ignition key.

5.4 Setting the machine to the transport position

- Switch off the machine before raising the mower units into transport position (Abb 86).

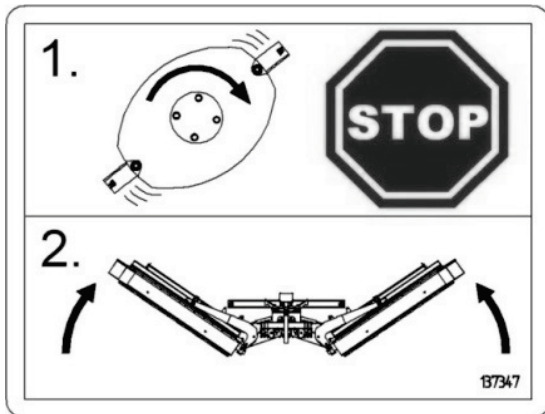


Abb 86. Label: Before lifting the mower units, wait for the mower discs to stop moving

- Wait for the mower discs to come to a complete stop.
- Unlock the side guard on the machine's mower units using the special tool (Abb 87).



Abb 87. Releasing the skirt

- Fold up the side guard and lock this into transport position.
- Secure the guard and protective sheets using the safety rope (Abb 88).

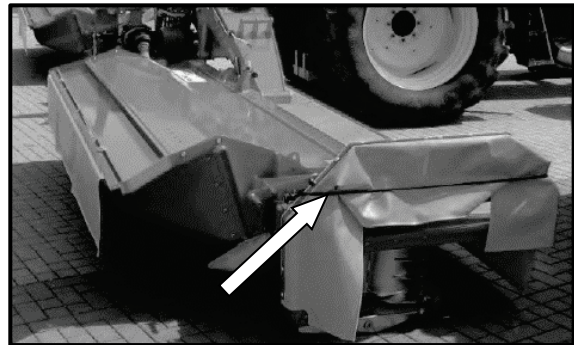


Abb 88. Raise the guard and secure it with the safety rope

- Lower the lower links into transport position.
- Obtain the lower link's transport height setting from the label attached to the machine.

IMPORTANT

Risk of material damage

- Before folding up the machine, set the PTO shaft on the tractor to the neutral position, to enable the drive shafts to turn to the folding position without force.

⚠ WARNING

Risk of injury from moving machine parts when raising

When raising the mower units into the transport position, there is risk of crushing or of limbs being cut off in the area of moving machine parts.

- Ensure that no one reaches into the hazard area when raising the mower units (Abb 89).



Abb 89. Risk of crushing – do not reach into the area of moving parts

IMPORTANT

Regular maintenance will ensure the full reliability and performance of your machine and a long service life.

Only original replacement parts should be used for repairs.

- ➔ Information on original replacement parts can be obtained from your dealer.

SAFETY INSTRUCTION

Important when carrying out work:

- ➔ When performing maintenance, always carry out the steps described fully and in the order indicated.

IMPORTANT Section 6.1.1 contains a service schedule with a summary of all maintenance tasks and service intervals.

- Check that the mower discs are aligned (Abb 145).

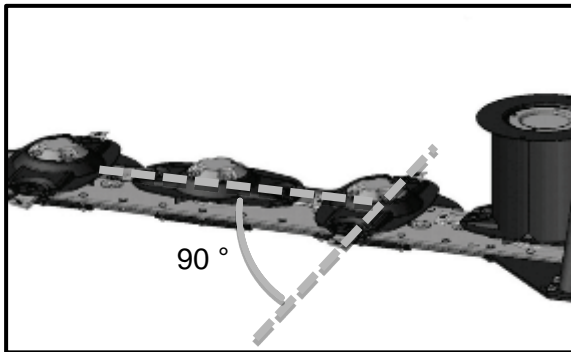


Abb 145. Correct alignment of the mower discs

The driveGUARD element has turned out of position if one of the mower discs is not positioned at a right angle (Abb 145).

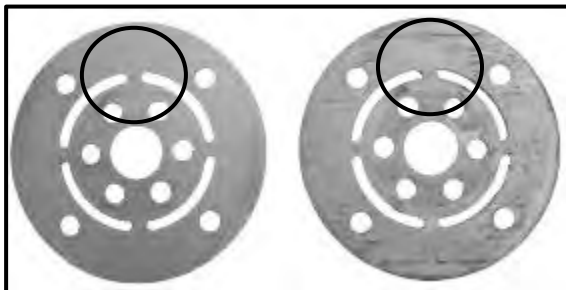


Abb 146. Left - normal appearance of a driveGUARD element, right with twisted shearing areas

- Replace this driveGUARD element (see Section 6.2.2.5).

IMPORTANT This is a precautionary measure. driveGUARD elements with shearing areas that have been significantly twisted (Abb 146) may be triggered for no apparent reason..

- Use the spanner to loosen the cutter-blade bolt.
- Remove any dirt from around the cutter-blade attachment.

WARNING

Risk of injury from sharp cutter blades, edges and burrs

There is a risk of sustaining cuts from sharp-edged machine parts and knives when working without protective gloves.

- Wear gloves to protect your hands from injury (Abb 147).

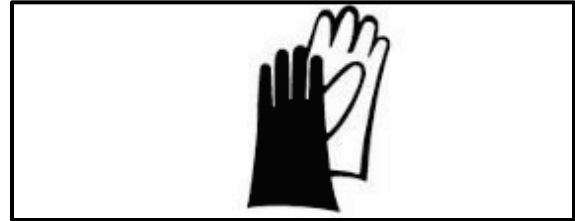


Abb 147. Use protective gloves

IMPORTANT

Risk of material damage through imbalance

Irregular running may result in damage to the machine.

- If necessary, replace the cutter blades in pairs.
- Always ensure the cutter blades are fitted according to the direction of rotation.

- Replace the cutter blade and/or the cutter-blade bolt and the Verbus-Ripp nut. (Abb 148)



Abb 148. : Individual parts during blade replacement

1. Cutter blade
2. Cutter blade bolt
3. Verbus-Ripp nut

- Fasten the cutter blade using the cutter-blade bolt and the Verbus-Ripp nut.

- Note the direction of rotation of the mower discs (Abb 149).

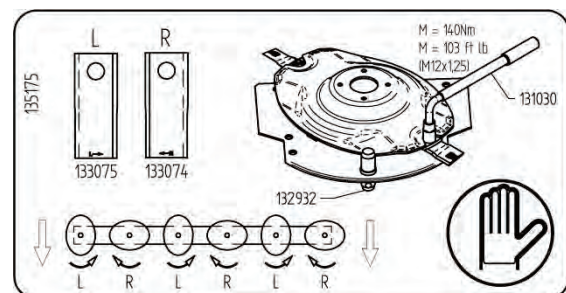


Abb 149. Direction of rotation of the mower discs on the mower units (without quick-change blade system)

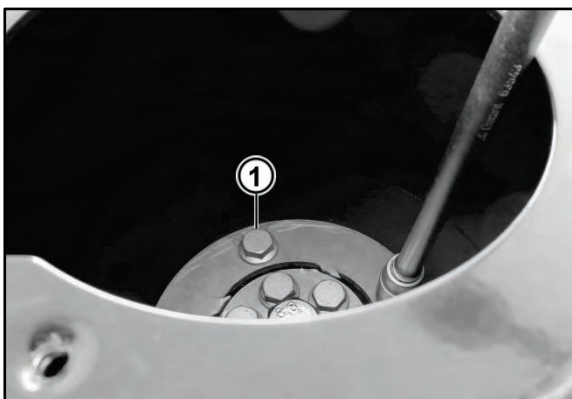


Abb 179. driveGUARD - Outer bolts

- ➔ Release the 4 outer bolts (1) on the driveGUARD element using the socket spanner extension.

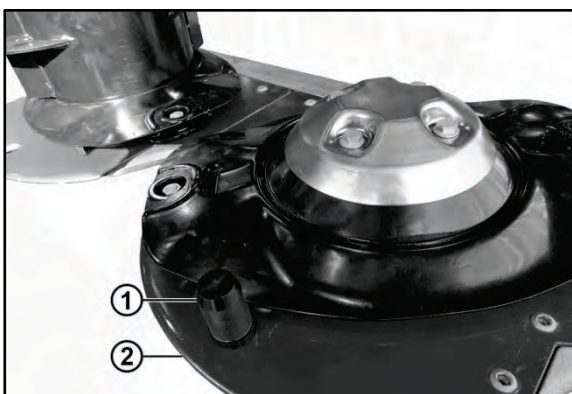


Abb 180. Stop pin inserted in new position

- ➔ Insert the stop pin (1) into the adjacent mower disc (2).



Abb 181. driveGUARD - Inner bolts

- ➔ Release the 6 inner bolts.
- ➔ Carefully remove all parts of the released driveGUARD element.

Installation

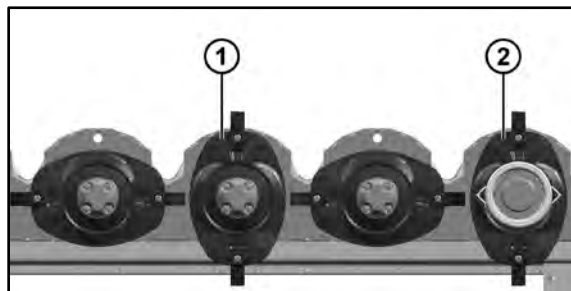


Abb 182. Mower discs aligned

- ➔ Align mower disc (1) parallel to mower disc (2).

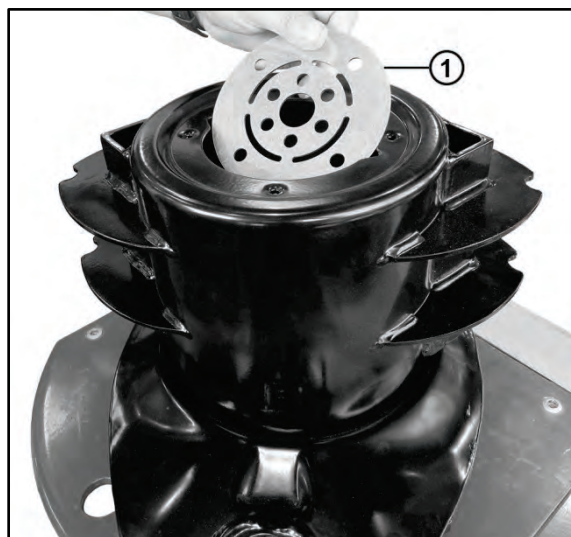


Abb 183. Insert new driveGUARD element

- ➔ Insert a new driveGUARD element (1).



Abb 184. Position of the new driveGUARD element

- ➔ Position the new driveGUARD element as shown.
- ➔ Make sure that all fastening holes of the driveGUARD element line up with the bolt holes of the mower disc.
- ➔ Insert the stop pin back into the respective mower disc.

CLICK HERE TO **DOWNLOAD** THE COMPLETE MANUAL

- Thank you very much for reading the preview of the manual.
- You can download the complete manual from: www.heydownloads.com by clicking the link below



- Please note: If there is no response to CLICKING the link, please download this PDF first and then click on it.

CLICK HERE TO **DOWNLOAD** THE COMPLETE MANUAL