



Technical Manual

CLICK HERE TO **DOWNLOAD** THE COMPLETE MANUAL

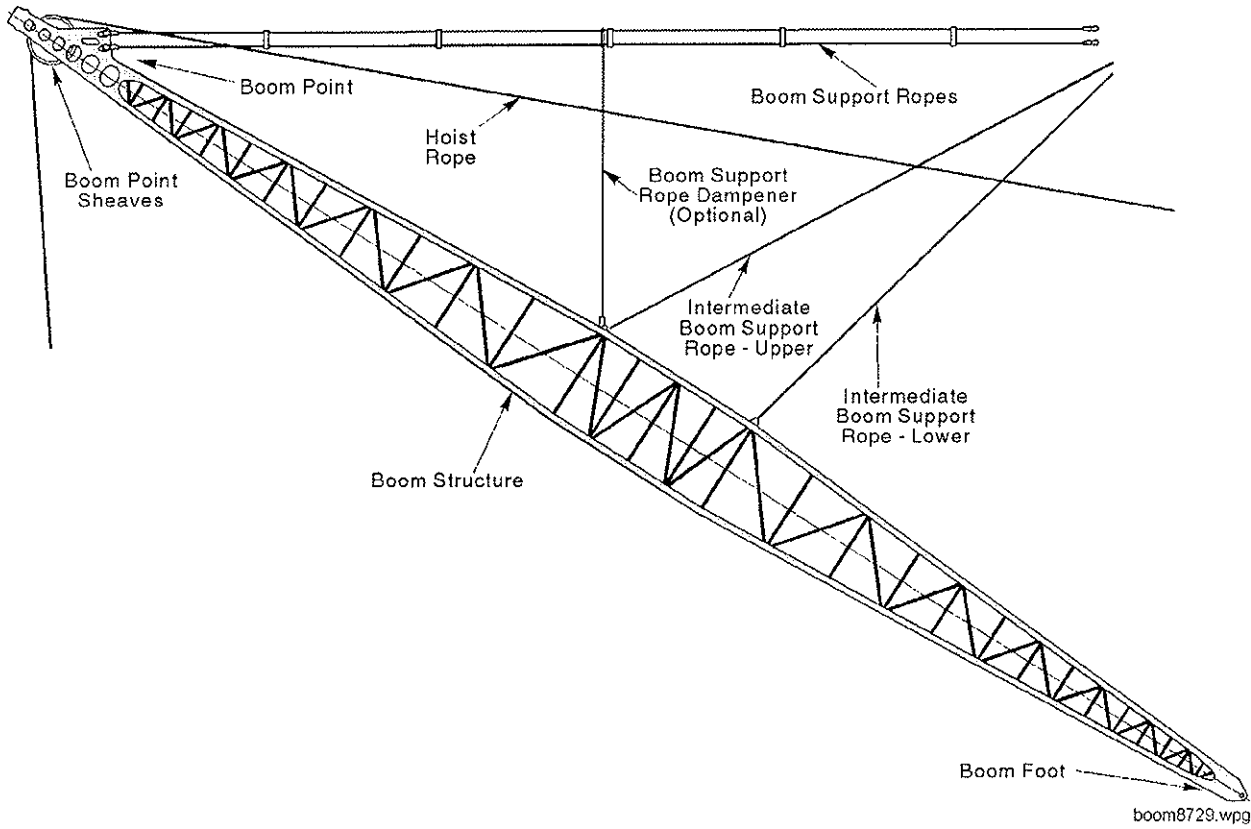
- Thank you very much for reading the preview of the manual.
- You can download the complete manual from: www.heydownloads.com by clicking the link below



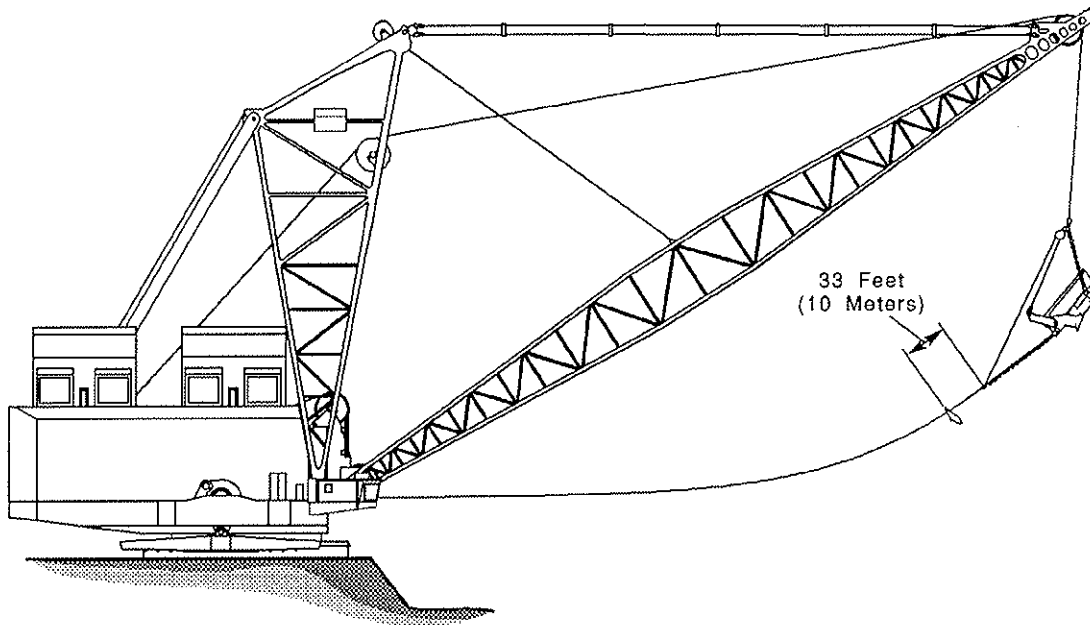
- Please note: If there is no response to CLICKING the link, please download this PDF first and then click on it.

CLICK HERE TO **DOWNLOAD** THE COMPLETE MANUAL

- If a heavy item begins to fall, let it fall, don't try to catch it.
- When disassembling machine, be sure to use safety stands and adequate cribbing to prevent tipping or rollover of components.
- Keep work area organized and clean. Wipe up oil or spills of any kind. Keep tools and parts off of the ground. Eliminate the possibility of a fall which could result in serious injury.
- Floors, walkways and stairways must be clean and dry. After draining operations be sure all spillage is cleaned up. Electrical cords and wet metal floors make a dangerous combination.
- Check all wire ropes for telltale signs of early wear or failure. Look for and secure any loose bolts or locking devices.
- Use extreme caution while working near any electrical lines or equipment whether it be high or low voltage. Never attempt electrical repairs unless qualified. Check limit switches for proper operation.
- When using an acetylene torch, always wear welding goggles and gloves. Keep a "charged" fire extinguisher within reach. Be sure the acetylene and oxygen tanks are separated by a metal shield and are chained to the cart. Do not weld or heat areas near transformers or electrical cabinets and utilize proper shielding around lubrication lines.
- Use pullers to remove bearings, bushings, gears, cylinder sleeves, etc. when applicable. Use hammers, punches and chisels only when absolutely necessary. Then, be sure to wear safety glasses.
- Be careful when using compressed air to dry parts. Use approved air blow guns, do not exceed 30 PSI (207 kPa), wear safety glasses or goggles and use proper shielding to protect everyone in the work area.
- Be sure to promptly reinstall safety devices, guards or shields after adjusting and/or servicing the machine.
- After servicing, be sure all tools, parts or servicing equipment are removed from the machine, or secured in an appropriate storage area.
- Protective eye goggles should be worn at all times when working on the air conditioning system. Work on the air conditioning system only in a well ventilated area.
- Wipe away excess lubricants around bearings and gears. Never lubricate parts in motion.
- Operate machine on level ground and be constantly aware of swing clearance. Never hold a load longer than needed in the dump cycle. Use swing brakes only when machine is stopped.



8750 BOOM ASSEMBLY



lmtdg828.wpg

DRAG LIMIT

To set the drag-in limit:

1. Tie a flag on the drag rope 10 meters from the crows-foot socket and drag in the rope until the flag touches the lower fairlead sheave.
2. Set the hoist and drag brakes.
3. Place the drag controller to drag in and turn the rope zero switch to DRAG. Hold for 5 seconds. The OIT will indicate "10".
4. To set the drag-out limit, payout the drag rope until 2 turns of rope remain on the drum and repeat step 2.
5. Place the drag controller in the drag-out position and turn the rope zero switch to DRAG. Hold for 5 seconds. The OIT will indicate the length of rope payed out in meters.

After completing the above steps, the drag in and out limits are set and the machine can be returned to service.

IMPORTANT NOTE: If the vacuum breaker for the synchronous motor on the M-G set does not stay closed when the start button is released, repeated attempts to start the set should not be made. On a motor of this type, Nema standards permit two successive starts if the motor is at ambient temperature. Before attempting another start, the vacuum breaker starting circuitry or mechanism should be inspected by qualified personnel and its proper operation verified.

5. Start the Machinery House Filter Fans. Move the selector switches to the *START* position momentarily and release. This will start the bleed duct fans. In approximately 5 seconds the main fans will automatically start and then the selector switch will light up. These fans introduce clean air into the machinery house to cool the dragline operating equipment. They also maintain a positive pressure within the house to prevent dust entry if all the access doors are kept closed.
6. When the above systems have been started and are operating correctly, go to the Operator's cab.
7. Sit into and adjust the operators seat.
8. Check the Hoist, Swing, Drag, and Propel Brake selector switches. If they are not at their *SET* positions, put all of them there now, even if the red light in the switch is on.
9. Check to be sure that the hoist and drag controllers are in their *NEUTRAL* position.

IMPORTANT NOTE: This machine is equipped with an electronic rope limit control system. This system is designed to aid the operator in avoiding serious mechanical damage to the machine due to hoist or drag bucket overtravel or bucket tightlining. However, the system is not a substitute for careful operating procedures. The rope limit control system should be verified for proper operation on a daily basis. It is **EXTREMELY** important that the system be recalibrated after any rope or bucket rigging changes have been made. Refer to the **MARION Protection System** operation manual for proper procedures.

10. Note the air pressure on the main screen of the operator's OIT. The air pressure must be a minimum of 90 PSI or a fault will be announced on the OIT and an alarm will sound when LE is energized. The air system pressure should be from 100 to 120 PSI during machine operation.

CLICK HERE TO **DOWNLOAD** THE COMPLETE MANUAL

- Thank you very much for reading the preview of the manual.
- You can download the complete manual from: www.heydownloads.com by clicking the link below



- Please note: If there is no response to CLICKING the link, please download this PDF first and then click on it.

CLICK HERE TO **DOWNLOAD** THE COMPLETE MANUAL