

**International  
T-4 and T-5  
Crawler Tractors**

**Operator's Manual**

1003883R1

Reprinted

**CASE III**

CLICK HERE TO **DOWNLOAD** THE COMPLETE MANUAL

- Thank you very much for reading the preview of the manual.
- You can download the complete manual from: [www.heydownloads.com](http://www.heydownloads.com) by clicking the link below



- Please note: If there is no response to CLICKING the link, please download this PDF first and then click on it.

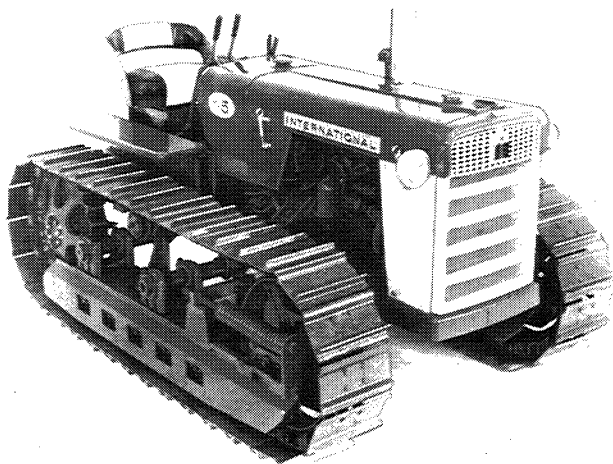
CLICK HERE TO **DOWNLOAD** THE COMPLETE MANUAL

## INTRODUCTION

Assembled in this book are operating and lubricating instructions for the International T-4 and T-5 Crawler Tractors. This material has been prepared in detail in the hope that it will help you to better understand the correct care and efficient operation of your tractor.

If you should need information not given in this manual or if you should require the services of a trained mechanic, get in touch with the International Harvester dealer in your locality. Dealers are kept informed on the latest methods of servicing tractors. They carry stocks of I. H. parts, and they are backed in every case by the full facilities of a nearby International Harvester District Office.

Throughout this manual the use of the terms LEFT, RIGHT, FRONT, and REAR must be understood to avoid confusion when following instructions. LEFT and RIGHT indicate the left and right sides of the tractor when facing forward in the driver's seat. Reference to FRONT indicates the radiator end of the tractor; to REAR, the drawbar end.



HA-3964

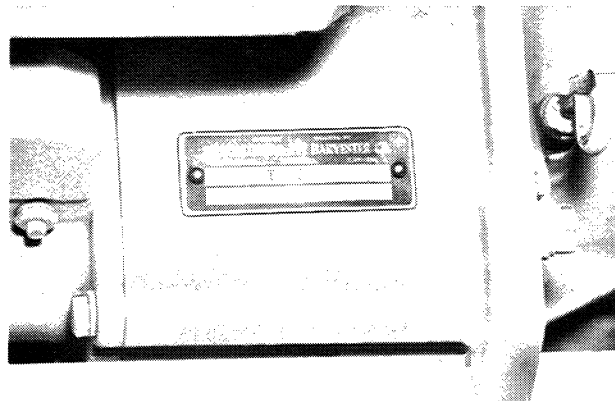
Illust. 1A

The illustrations in this manual are numbered to correspond with the pages on which they appear; for example, Illusts. 1A, 1B and 1C are on page 1.

In order to provide a tractor equipped as nearly as possible to suit each customer's needs, a variety of extra equipment and accessories are available. Refer to page 56.

Where operating and maintaining instruction on these items is required, it is included in the instructions for operating or maintaining the tractor. Disregard the instructions for equipment not on your tractor.

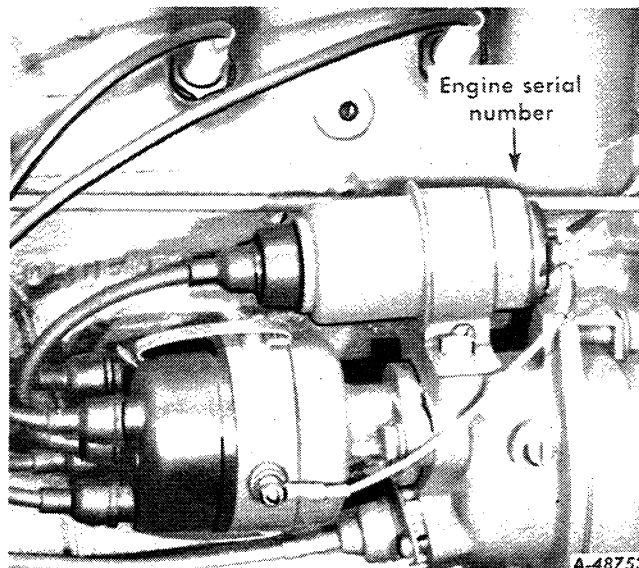
When in need of parts, always specify the tractor and engine serial numbers including prefix and suffix letters. The tractor serial number is stamped on a name plate attached to the right side of the clutch housing. See Illust. 1B.



Illust. 1B

Location of tractor serial number

The engine serial number is stamped on the right side of the engine crankcase above the battery ignition unit. See Illust. 1C. This serial number is preceded by the prefix C-123 or C-135 which indicates that it is a carbureted engine with either a 123 or 135-cubic-inch piston displacement.



Illust. 1C

Location of engine serial number

For ready reference, we suggest that you write these serial numbers in the spaces provided on the Delivery Report.

## OPERATION

### DRIVING THE TRACTOR - Continued

#### Stopping the Tractor

Depress the engine clutch pedal all the way down to disengage the engine clutch, then place the transmission gearshift lever in the neutral position. If it is necessary, depress the brake pedal to halt the tractor. Depressing the clutch pedal on tractors with standard power take-off also disengages the power take-off.

The tractor can be stopped also by pulling back on both steering levers enough to disengage the steering clutches or all the way back, engaging the steering brakes. The latter instance would possibly only be used on a grade. In both the above instances this operation allows the tractor to stop but does not stop the power take-off if it is desirable to do so.

If the tractor is to be parked on a slope where there is a possibility of its rolling, depress the brake pedal and flip the brake pedal lock over, until one of the notches engages the stud on the side of transmission housing, thus locking the brakes. **CAUTION:** If the tractor is to be parked on a slope during extremely cold weather, secure the tractor with blocks instead of locking the

brakes. Condensation of moisture may cause the brake bands to freeze on the drums.

#### Operating in Water or Snow

When operating the tractor in deep water or thawing snow, lubricate the track rollers more frequently than indicated in "Lubrication Chart".

When operating the tractor in very wet conditions, it is important to check that no moisture has accumulated in the steering clutch housings. Check this periodically by removing one of the lower bolts in the bottom of the housings, allowing any accumulation of moisture to run out.

#### Freeing Tracks Frozen to the Ground

If the tractor is left out during cold weather and the tracks become frozen to the ground, do not attempt to jerk them free with the power of the engine. Start the tractor slowly; if the tracks do not break free, pry them loose. If necessary, use a blow torch, being careful about fire hazards. To prevent the tractor from freezing to the ground, park the tractor on planks.

### OPERATING PRECAUTIONS

Do not attempt to start the engine by towing or coasting the tractor. To do so may cause serious damage to the engine and transmission.

Do not operate the cranking motor for more than approximately 30 seconds at any one time. If the engine fails to start, allow the cranking motor to cool for two or three minutes and then repeat the starting operation.



**CAUTION:** Never fill the fuel tank when the engine is running or when near an open flame. Do not smoke or use an oil lantern when working around inflammable fuels. When pouring fuel, keep the hose and nozzle or the funnel and container in contact with the metal of the fuel tank to avoid the possibility of an electric spark igniting the gas. Do not light matches near gasoline, as the air within a radius of several feet is mixed with a highly explosive vapor.

Do not pour cold water into the radiator if the engine is very hot, unless conditions make it absolutely necessary. Under such conditions, start the engine and let it idle. Then slowly pour the water into the radiator.

Fuel tanks have air vents in the filler cap. These vents should be kept open at all times to assure proper flow of the fuels.

Never operate the engine under load until it is thoroughly warmed up.

Never operate the engine at more than the

regular governed speed. Excessive speeds are harmful.

Do not use the choke to enrich the fuel mixture except when starting the engine. Never operate the engine with the choke button only part way in.

Immediately after the engine starts, check the oil pressure indicator to see that it is registering pressure. If not, stop the engine and investigate the cause of oil pressure failure or refer to your International Harvester Dealer before operating the tractor.

Always disengage the engine clutch before shifting gears.

The drawbar should be free to swing at all times, except in rare cases when it may be necessary to hold it in one position.

Do not ride the brake pedal as this will result in excessive wear on the brake linings.



While the tractor is in motion, extreme care should be taken to prevent accidents and personal injuries.

Before dismounting from the tractor, place the transmission gear shift lever in the neutral position.




If operating a power take-off with this tractor be sure the power take-off is inoperative before dismounting.


## LUBRICATION

 AFTER EVERY 100 HOURS OF OPERATION - Continued

Ref. No.	Name and Location of Lubrication Points	See Illust.
11.	Track rollers. Use the lubricator. Add lubricant until resistance is felt on the lever. Lubricate more frequently if the seals are worn or when the tractor is being operated in water or under excessively dusty conditions. Refer to chart on page 24 for lubricant.	23A

 AFTER EVERY 150 HOURS OF OPERATION

12.	Generator oil cup (2 fittings). Use an oil can and apply eight to ten drops of SAE-20 oil in each cup.	22B
13.	Oil filter element. Replace the oil filter element every time the crankcase oil is changed by removing the oil filter retaining bolt.	22A
14.	Oil filter drain plug. Remove the oil filter drain plug and allow all oil to drain out.	22A
15.	Crankcase oil pan drain plug. Remove plug and drain all oil from the crankcase while the engine is warm; then refill with new oil to the "FULL" mark on the oil level gauge. Refer to chart on page 24 for lubricant.	22B
16.	Hydraulic fluid filter. Clean filter with a stiff brush using kerosene or other solvent. Refer to "Hydraulic Fluid Filter" on page 44.	23A
17.	Reverser lever bearing.	23D

 AFTER EVERY SIX MONTHS OR AFTER EVERY 500 HOURS OF OPERATION

18.	Cranking motor. Put a few drops of SAE-20 oil in the cranking motor oil cup.	22A
19.	Distributor. Remove the grease plugs and insert a lubrication fitting. Apply pressure-gun grease (chassis lubricant) to the distributor fitting until a small quantity comes out of the relief hole opposite the plug.	22A

 YEARLY OR AFTER EVERY 1000 HOURS OF OPERATION

20.	Transmission. Remove drain plug and allow the fluid to drain, replace the drain plug and remove the filler cap. Refill with approved lubricant up to the proper level on the dip stick. Refer to chart on page 24 for lubricant.	23F
21.	Final drive housings. Drain and refill with 1 quart of SAE-90 lubricating oil in each housing.	23E

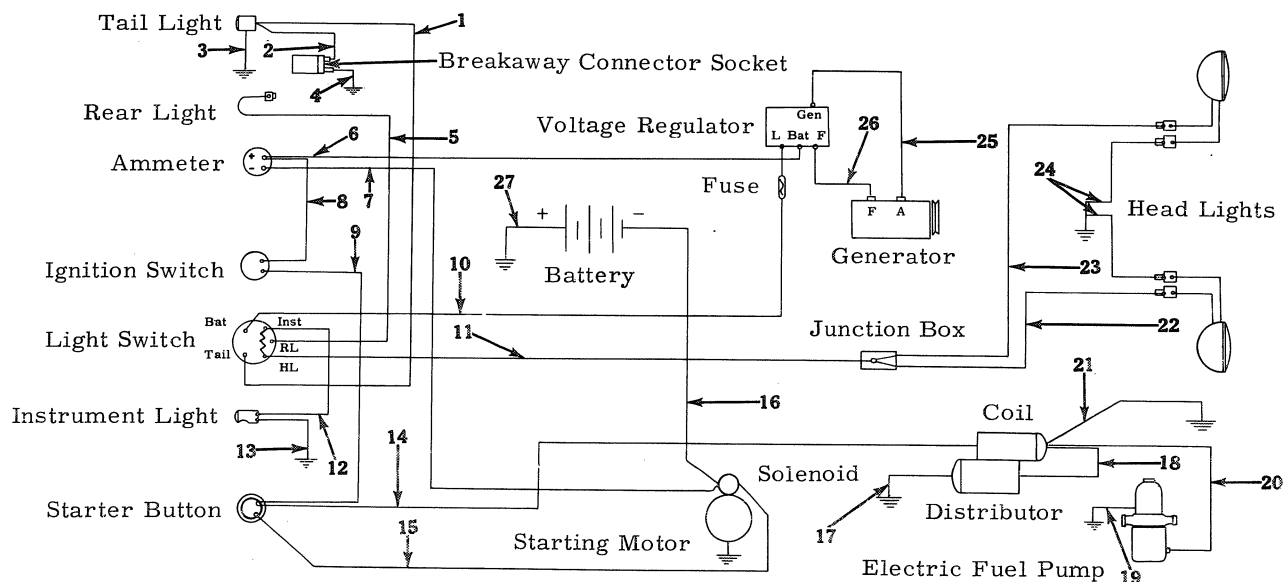
## FINDING TROUBLE

PROBLEM	PROBABLE CAUSE	PROBABLE REMEDY
TRANSMISSION GEARS SLIP OUT OF MESH	A. Gears not fully engaged. B. Gears damaged.	A. Push or pull gearshift lever as far as it will go. If shift lever movement is correct, shift assembly is at fault. * B. *
STEERING CLUTCHES SLIP	A. Clutches not correctly adjusted.	A. See instructions on pages 46 and 47.
ENGINE OPERATES BUT TRACTOR WILL NOT MOVE	A. Steering brakes locked. B. Engine clutch faulty. C. Transmission faulty. D. Steering clutches slip.	A. Release steering brake pedal from the latching pawl. B. Adjust clutch for recommended pedal movement. See page 45. C. * D. Adjust steering clutches. See page 47.
TRACTOR WILL NOT TURN	A. Steering clutch does not disengage. 1. Clutch lever not correctly used. 2. Clutch not correctly adjusted. 3. Clutch faulty.	A. 1. Pull lever all the way back. 2. Adjust steering clutch. See page 47. 3. *
TRACTOR WILL NOT MAKE SHORT (PIVOT) TURN	A. Steering clutch does not disengage. B. Steering brake does not hold. 1. Steering brakes not correctly adjusted. 2. Steering brakes worn or faulty.	A. See "Tractor Will Not Turn" above. B. 1. Adjust steering brakes and controls. See pages 46 and 47. 2. Replace the steering brakes. *
TRACK CHAIN COMES OFF DURING OPERATION	A. Rocks in track assembly. B. Track chain loose. C. Track spring broken, front idler worn or misaligned. D. Track frames are misaligned.	A. Clean out dirt and rocks from the track assembly. B. Adjust track chain tension. See page 49. C. * D. Loosen bolts on track frame to gauge bar brackets and align the tracks.
ROLLERS OR IDLERS WILL NOT TURN	A. Insufficient lubricant. B. Bushing or internal seizure. C. Mud packed between rollers and idlers.	A. Follow specifications of the "LUBRICATION GUIDE" B. * C. Thoroughly clean entire track assembly.

\* Consult your International Harvester Dealer.

## MAINTENANCE

## WIRING DIAGRAM

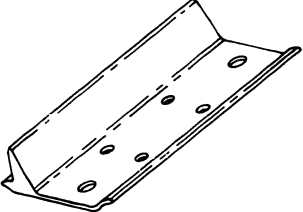
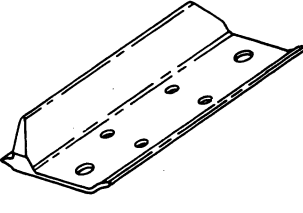
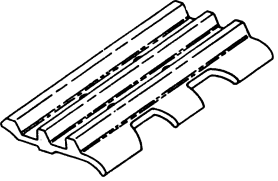
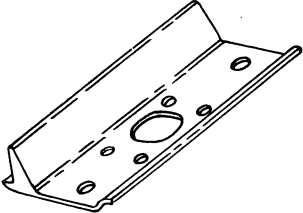


Illust. 41A

HA-4251

Ref. No.	DESCRIPTION
1.	Cable, tail light to light switch "TAIL" terminal.
2.	Cable, tail light to breakaway connector socket.
3.	Cable, tail light to ground.
4.	Cable, breakaway connector socket to ground.
5.	Cable, rear light to light switch terminal "RL".
6.	Cable (yellow), ammeter positive (+) terminal to "BAT" terminal on voltage regulator.
7.	Cable (brown), ammeter negative (-) terminal to solenoid.
8.	Cable, <sup>(red)</sup> ammeter positive (+) terminal to ignition switch.
9.	Cable, <sup>(orange)</sup> ignition switch to starter button.
10.	Cable, <sup>(white)</sup> light switch "BAT" terminal to voltage regulator "L" terminal.
11.	Cable, <sup>(blue)</sup> light switch "HL" terminal to junction box.
12.	Cable, light switch "INST" terminal to instrument light.
13.	Cable, instrument light to ground.
14.	Cable (black), starter button to coil.
15.	Cable (green), starter button to solenoid.
16.	Cable, solenoid to battery negative (-) terminal.
17.	Cable, distributor to ground.
18.	Cable, coil to distributor.
19.	Cable, electric fuel pump to ground.
20.	Cable, electric fuel pump to coil.
21.	Cable, coil to ground.
22.	Cable, junction box to right head light.
23.	Cable, junction box to left head light.
24.	Cable, head light to ground.
25.	Cable, voltage regulator "GEN" terminal to generator "A" terminal.
26.	Cable, voltage regulator "F" terminal to generator "F" terminal.
27.	Cable, battery positive (+) terminal to ground.

## ATTACHMENTS

TYPE OF SHOE	SHOE WIDTH	TRACK GAUGE WIDTH	SIZE OF TRACK FRAME	RECOMMENDED SERVICE
 <p>Illust. 51A Regular Shoe Square Corner</p>	10"	38", 48", 68"	4 Roller	For all general operating conditions.
	10"	38", 48", 68"	5 Roller	
	12"	48", 68"	4 Roller	
	12"	48", 68"	5 Roller	
	14"	48", 68"	4 Roller	
	14"	48", 68"	5 Roller	
 <p>Illust. 51B Clipped Corner Track Shoe</p>	10"	38", 48", 68"	4 Roller	These shoes have the same general characteristics as square-corner shoes. They are less likely to damage pavement or smooth surfaces when making turns. Also they pull out of the ground easier and retard the tractor less when operating under adverse soil conditions.
	10"	38", 48", 68"	5 Roller	
	12"	48", 68"	4 Roller	
	12"	48", 68"	5 Roller	
	14"	48", 68"	4 Roller	
	14"	48", 68"	5 Roller	
 <p>Illust. 51C Overlapping Flat- Low Profile 3 Grouser Shoe</p>	10"	38", 48", 68"	4 Roller	These shoes must be used on tractors mounted with front end loaders, where maximum traction is required and damage to terrain must be kept to a minimum.
	10"	38", 48", 68"	5 Roller	
	12"	48", 68"	4 Roller	
	12"	48", 68"	5 Roller	
 <p>Illust. 51D Snow Shoe</p>	10"	38", 48", 68"	4 Roller	These shoes are useful for continued service in ice and snow. The notched overlapping edge and cut-out hole prevent wet snow from packing in the track chain. These shoes, when alternately assembled to track reduce damage to road surfaces.
	10"	38", 48", 68"	5 Roller	
	12"	48", 68"	4 Roller	
	12"	48", 68"	5 Roller	
	14"	48", 68"	4 Roller	
	14"	48", 68"	5 Roller	

CLICK HERE TO **DOWNLOAD** THE COMPLETE MANUAL

- Thank you very much for reading the preview of the manual.
- You can download the complete manual from: [www.heydownloads.com](http://www.heydownloads.com) by clicking the link below



- Please note: If there is no response to CLICKING the link, please download this PDF first and then click on it.

CLICK HERE TO **DOWNLOAD** THE COMPLETE MANUAL