

ORIGINAL INSTRUCTIONS

**CX210B**  
Crawler Excavator

**OPERATOR'S MANUAL**

**Part number 48075100**  
1<sup>st</sup> edition English  
November 2016



CLICK HERE TO **DOWNLOAD** THE COMPLETE MANUAL

- Thank you very much for reading the preview of the manual.
- You can download the complete manual from: [www.heydownloads.com](http://www.heydownloads.com) by clicking the link below



- Please note: If there is no response to CLICKING the link, please download this PDF first and then click on it.

CLICK HERE TO **DOWNLOAD** THE COMPLETE MANUAL

**SECTION 1**  
**TO THE OWNER**

**CX210B HYDRAULIC CRAWLER EXCAVATORS**



CT06M004

1

Dealer's Stamp

A large, empty rectangular box with a thin black border, intended for a dealer's stamp or signature.

## SECTION 3 - SAFETY/DECALS/HAND SIGNALS

---

24. Work out a means of convenient escape from the machine (emergency exit via the windshield or the rear window glass) in the event of the machine turning over or tipping over or the cab door being jammed.
25. Make sure you are perfectly familiar with traffic regulations and special safety equipment requirements before transporting this machine on a public highway.
26. When loading trucks, never swing the load over the truck cab.
27. Before undertaking any travel on the job site, make sure the itinerary to be followed is completely safe. If bridges are to be crossed, make sure they are perfectly capable of supporting the weight of the machine.
28. Always steer round large obstacles such as boulders, big trees, etc.
5. Before starting the engine, check the direction of travel (in forward drive, the reduction gears should be to the rear of the machine).
6. Do not work near overhead high-voltage electric lines without checking beforehand that all necessary measures have been taken to respect the minimum distances:
  - Less than 57 000 volts: 3 metres.
  - More than 57 000 volts: 5 metres.
7. Study the position of any existing pipelines or conduits before starting work. Electrical cables, gas and water pipes and other underground installations can cause serious injury.
8. Always make allowance for working conditions (sloping or rough ground), the site and weather conditions when driving the machine.
9. Do not allow anyone to stand in the machine working area. Accidental operation of the upper-structure swing control or of an attachment control could cause an accident. Stop all operations until everyone has moved away.

### **QUICK COUPLER (optional)**

1. It is mandatory for the switch to be in the locked position when operating the machine.
2. Every day, check that the locking bar functions correctly and that it is not fouled by foreign matter. Clean the locking system if necessary.
3. If you are obliged to use the quick coupler with buckets not manufactured by CASE, make sure the diameter of the pins and the width between the bucket lugs meet the dimensions needed to fit the quick coupler (pins, washers, bushings, etc.). Consult your CASE Dealer.
10. Operate all controls gradually to ensure smooth machine operation.
11. Whenever load handling operations are to be carried out, it is imperative to adhere strictly to the instructions given in this manual and local legislation.
12. It is forbidden to use the machine to carry out tasks other than those for which it is intended. Never use the equipment for sweeping the ground to level out rubble or push objects (transversal stress on the attachment).

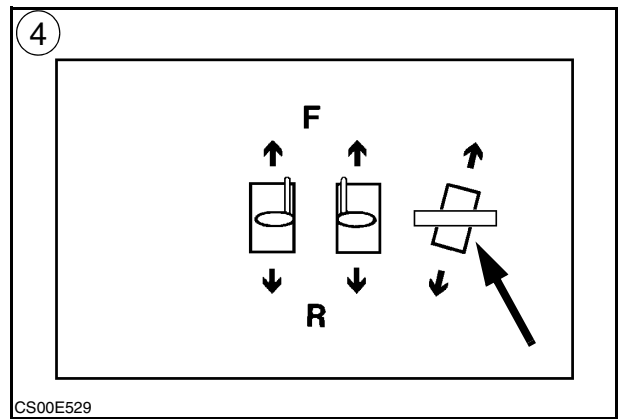
### **OPERATING THE MACHINE**

1. When working on a public highway, use standard traffic signs and take into consideration the working range of the upperstructure and its attachments. Local or national regulations stipulate the number, type and location of reflector strips.
2. Avoid running the engine in a confined space. If there is no alternative, proper ventilation must be provided at all times.
3. Do not allow anyone else on the machine. The passenger could fall or cause an accident.
4. Never operate the working or travel controls unless you are properly seated in the operator's seat with the seat belt correctly fastened.
13. Stop the engine, remove the starter switch key, wait one minute minimum and place the key of the battery master switch in "O" (Off) position when the machine is not in use, even for short periods of time.
14. In some configurations, the working range of the attachment allows the tool to interfere with the machine. Always maintain a safe minimum distance between the tool and the machine (swaying of the tool or incorrect operation).
15. To access or exit the operator's compartment, the LH control arm must be in the raised position. Never forget this basic requirement.

**FUNCTION OF THE LEVERS AND PEDALS**

Part number:  
 KHP1498 (standard)  
 KHP1484 (with right-hand option)  
 KHP1510 (with left-hand option)  
 KHP1511 (with right and left-hand options)

This decal shows the function of the travel control levers and pedals.

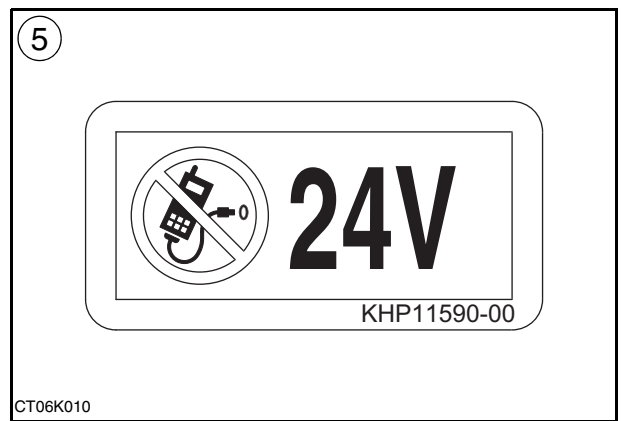


14

**CIGARETTE LIGHTER SOCKET (24 volts)**

Part number: KHP11590

This decal shows the location and the voltage of the cigarette lighter socket. It is strictly prohibited to connect devices of a different voltage.

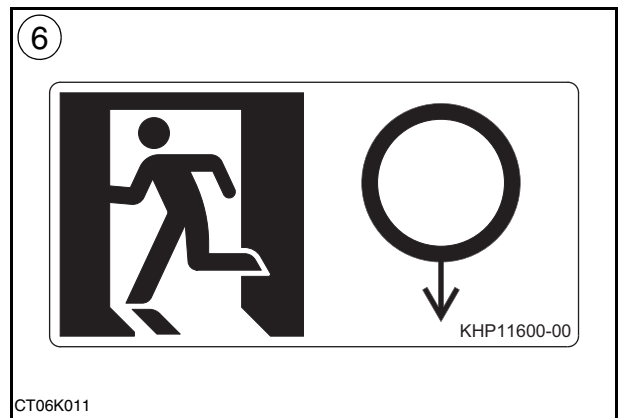


15

**EMERGENCY EXIT**

Part number: KHP11600

This decal shows the location and way how to use the emergency exit (rear window).



16

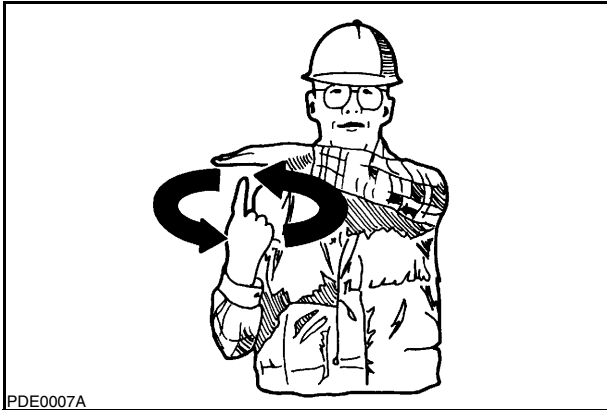
**POCKET FOR MAXIMUM HANDLING LIMITS TABLE**

⑦ Part number: G4647501

This pocket is provided for the table showing maximum handling limits corresponding to the attachment installed on the machine.

SECTION 3 - SAFETY/DECALS/HAND SIGNALS

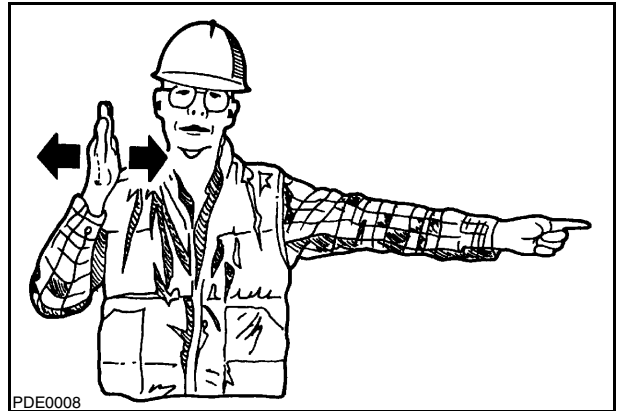
**SLOWLY RAISE THE LOAD OR TOOL**



51

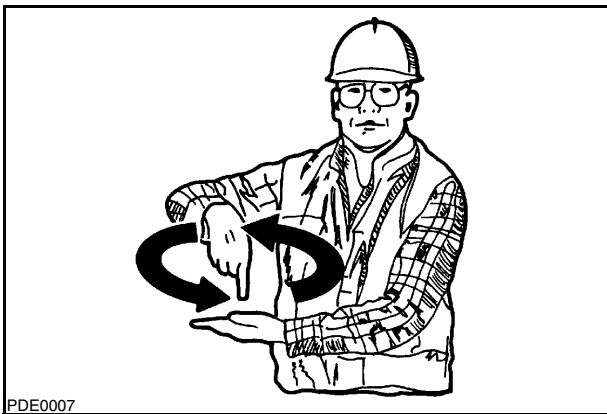
**TURN MACHINE RIGHT (swing load right)**

To stop movement, stop moving hand and clench fist.



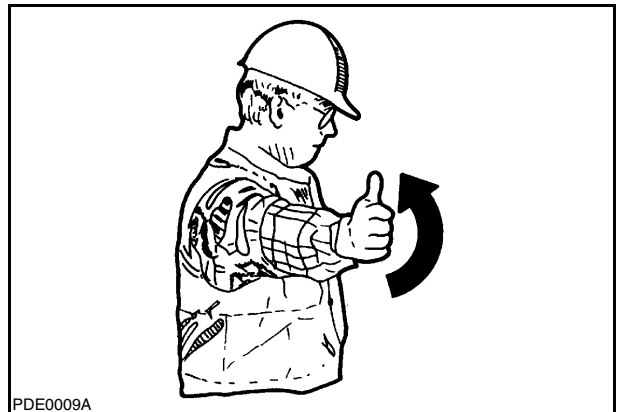
54

**SLOWLY LOWER THE LOAD OR TOOL**



52

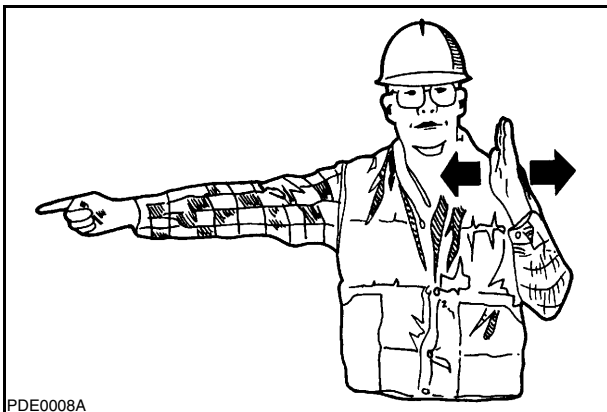
**RAISE TOOL**



55

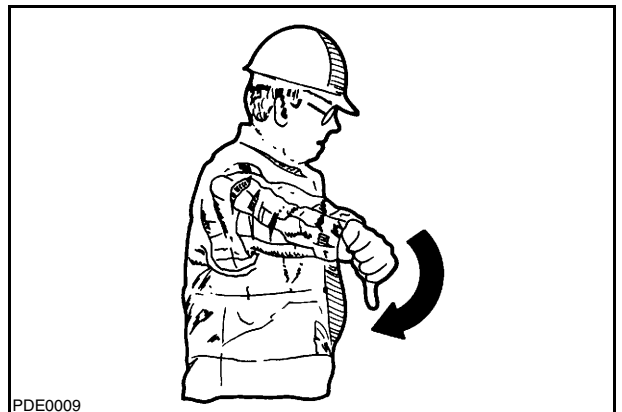
**TURN MACHINE LEFT (swing load left)**

To stop movement, stop moving hand and clench fist.



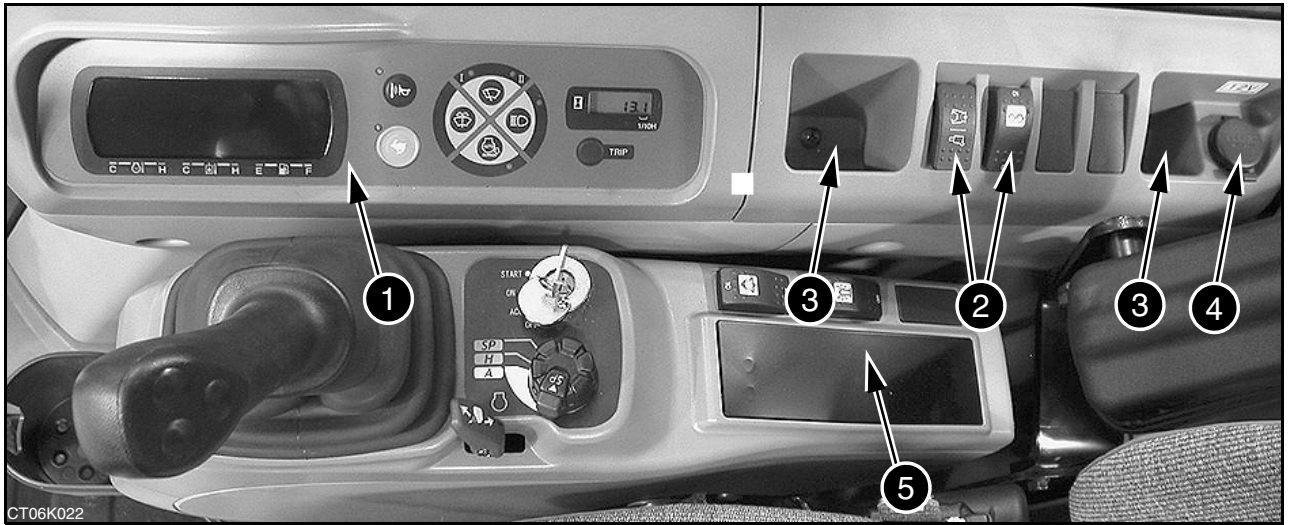
53

**LOWER TOOL**



56

RH CONSOLE



11

1. SYSTEMS DISPLAY AND FUNCTION CONTROL PANEL

See the chapter "Systems display and function control panel".

2. OPTION CONTROL (optional)

These controls are used to control optional accessories such as hydraulic hammer, grab, shears, etc. See "Auxiliary hydraulic systems" in section 5.

3. STORAGE TRAY

4. AUXILIARY 12 VOLTS SOCKET

This socket is used to power electrical equipment of 12 volts.

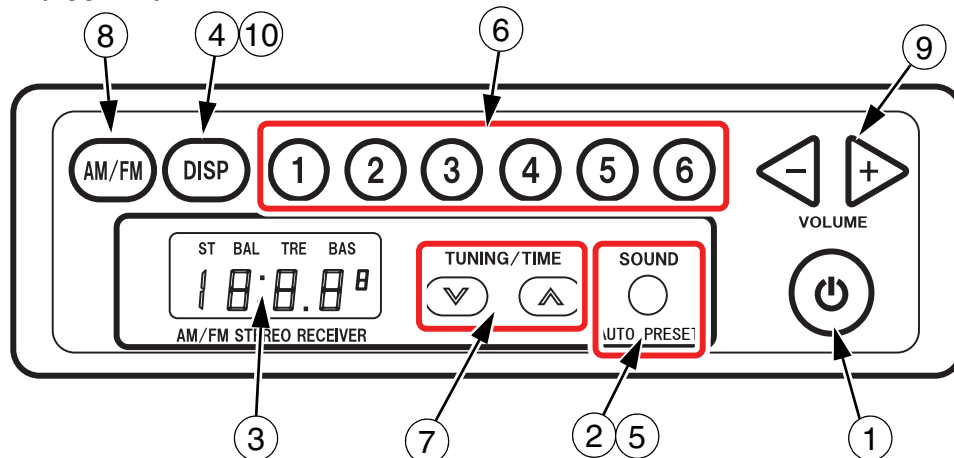


**WARNING**

It is strictly prohibited to connect devices of a different voltage.

5. CAB RADIO COMPARTMENT

## CAB RADIO (Type A)



4-ITP005E

1. Power button (**Power**)
2. Sound adjustment (**SOUND**)
3. Display unit
4. Clock/Frequency button (**DISP**)
5. Auto store (**SOUND/AUTOPRESET**)
6. Preset buttons 1 through 6 (**Preset station**)
7. Tuning button (**TUNE**)
8. Band button (**AM/FM**)
9. Volume adjustment buttons (**VOLUME-VOLUME+**)
10. Clock adjustment (**DISP**)

## OPERATIONS

### Power button (**Power**)

Pressing **Power** button turns **ON** the power. The band name is displayed followed by the frequency. Pressing it again turns **OFF** the power. Clock is displayed.

### Sound adjustment (**Sound**)

Pressing this button switches between **BAL** and **TRE** and **BAS**.

Pressing the button with **BAS** selected cancels the sound adjustment.

- Pressing the tuning buttons with **BAL** (balance) selected allows you to make adjustments. Pressing the up button (7) raises the output level of the right speaker. Pressing the down button (7) lower the output level of the left speaker. (Output levels of both speakers go up to 7).
- Pressing the tuning buttons with **TRE** (treble) selected allows you to make adjustments. Pressing the up button (7) raises the level by one step. Pressing down button (7) lowers the level by one step. (The levels go up and down up to 7).

- Pressing the tuning buttons with **BAS** (bass) selected allows you to make adjustments. Pressing the up (7) button raises the level by one step. Pressing down button (7) lowers the level by one step.

### Display unit

The clock, radio frequency, and operation mode are displayed.

### Clock/frequency button (**DISP**)

Pressing this button switches the display to the clock. Pressing it again displays the band. If you leave the display alone, it returns to the frequency display after 1.5 seconds.

### Auto store (**SOUND/AUTO PRESET**)

When this button is held down for at least 2 seconds, receivable broadcast stations can be memorized for preset buttons 1 through 6.

### QUICK COUPLER LOCKING AND UNLOCKING CONTROL SWITCH (optional)

This switch is located on the left-hand control arm.

To unlock pull the locking pin (1) towards you and simultaneously press the top of the switch. In this position, the audible alarm device sounds and the tool can be installed or removed.

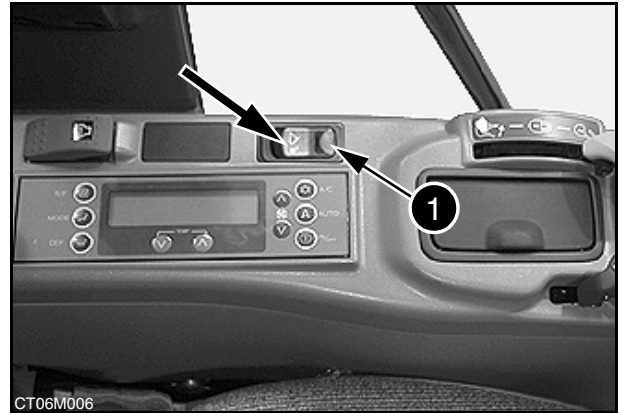
**NOTE:** For safety reasons, the switch cannot be operated by simply pressing the top.

To lock, press the bottom of the switch. In this position, the audible alarm device will cease to function.

**NOTE:** When locking, it is not necessary to operate the locking pin (1).

**IMPORTANT:** Each time you change a tool, be sure to place the switch in locked position.

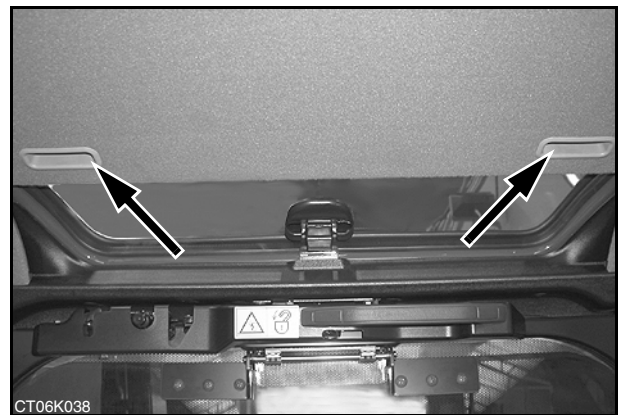
See "Quick tool installation and removal" in section 5.



45

### ROOF CURTAIN

The curtain can be opened by sliding the curtain towards the rear using the handles. Closing is done by sliding the curtain to the front.

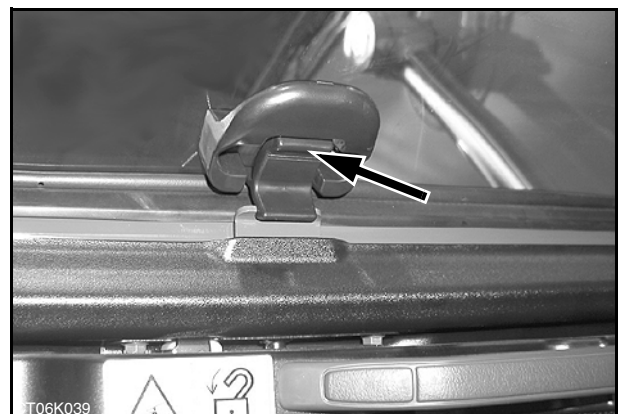


46

### ROOF HATCH

Open the roof curtain. To open the roof hatch, operate the handle and push the handle. To close the roof hatch, pull the handle until engagement.

**IMPORTANT:** Since roof hatch opening is assisted by two gas struts, simply follow through the closing movement without pulling or trying to hold it back.



47

### SEAT BELT

Sit comfortably in the operator's seat, pull out a long section of belt and engage it in the fastening system (9).

**NOTE:** *If the section of belt pulled out is not long enough, release it, so it rolls up and then pull it out again.*

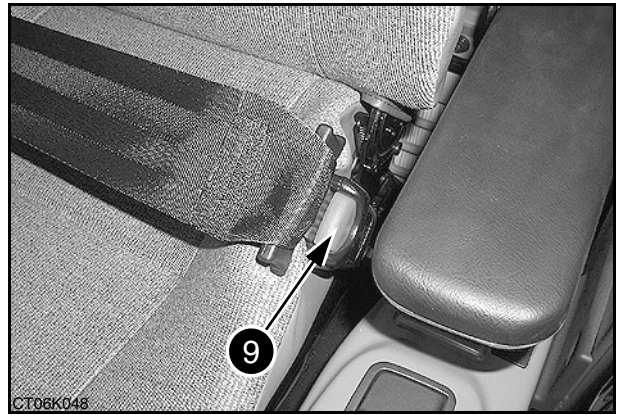
To release the seat belt, press down on the releasing lever (9).



Always fasten your safety belt before starting the engine. The safety belt will protect you effectively. The safety belt should not be too loose. It should not be twisted or caught in the operator's seat.

**IMPORTANT:** *Inspect the seat belt. Make sure that it is not damaged, that the mounting screws are correctly tightened and replace any defective parts.*

The seat belt must be kept clean. Use only soap and water to clean the belt, do not use bleach or dyes.



71

## TOWING HOLES



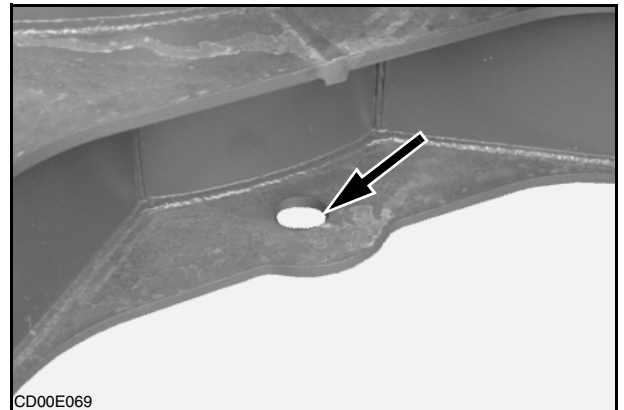
This is a delicate manoeuvre which is always carried out at the risk of the user. The manufacturer's warranty does not apply to any incidents or accidents which may occur during towing.

Located at the front and rear of the undercarriage.

These holes are used to tow heavy objects (up to 10 tons), see "Towing" in section 5.

Make sure that the slings, chains and accessories are in perfect condition and can bear the load to be moved.

**IMPORTANT:** Towing must always be done in alignment with the undercarriage.



96

## CAB PROTECTION (F.O.P.S.) (Optional)

The machine could be equipped with a **FOPS (Falling Objects Protective Structure)** for the cab.

After a fire, corrosion or collisions, any possible damage to the cab protection structure must be carefully evaluated by specialised and qualified personnel. In any case, all damaged parts must be replaced by genuine spare parts, so that the original conditions are reinstated. Consult your CASE Dealer to verify the functionality on the cab structure or the requirement for the replacement of the entire structure or parts of it.



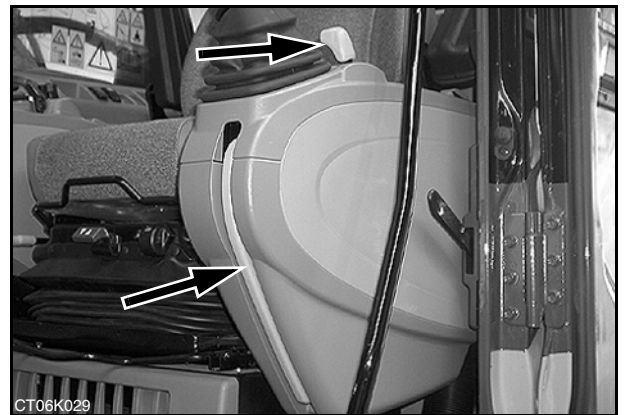
97

## STARTING THE ENGINE

**NOTE:** If the machine has been out of use for some time, see "Starting up after storage" in section 10.

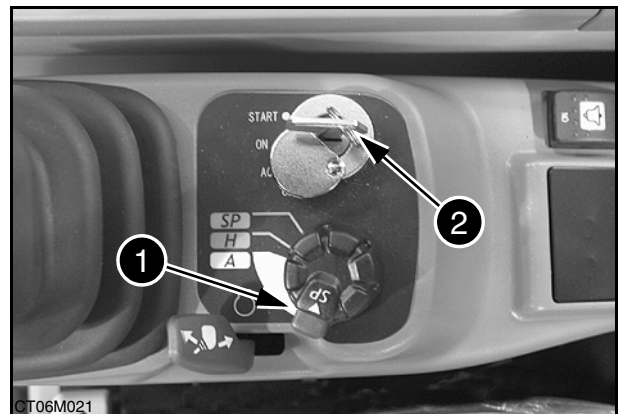
**NOTE:** See "Connecting booster batteries" in section 9, if you have to start the engine using booster batteries.

1. Place the key on the battery master switch in "I" (On) position.
2. Take up position correctly in the operator's seat with the seat belt correctly fastened. See "Operator's seat" in section 4.
3. Make sure the function cancellation lever is in the central position (safety bar in inward position).



6

4. Make sure the engine throttle button (1) is in low idle position. In cold weather, leave it in half-way position.
5. Turn the starter switch key (2) to "ON" position.
6. If necessary, enter the anti-theft code. See "Anti-theft device".

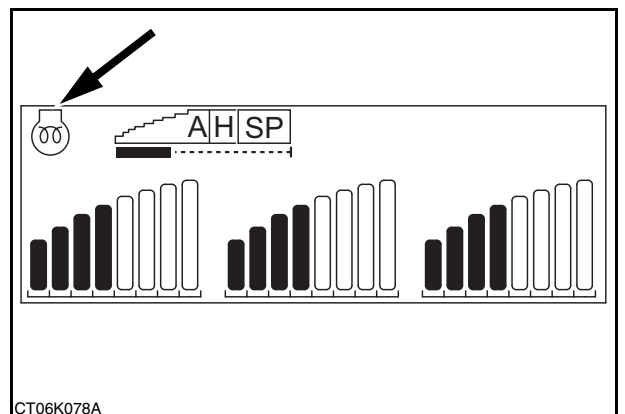


7

In cold weather, the "Engine pre heat" icon appears on the systems display panel. See "Control and function display console" in section 4.

7. When the icon disappears, turn the key (2) to the "START" position. Release the key as soon as the engine starts to turn. If the engine stops, wait about a minute and perform the operation again.

**IMPORTANT:** Do not operate the starter motor for more than ten seconds at one time. Do not operate the starter motor when the engine is running.



CT06K078A

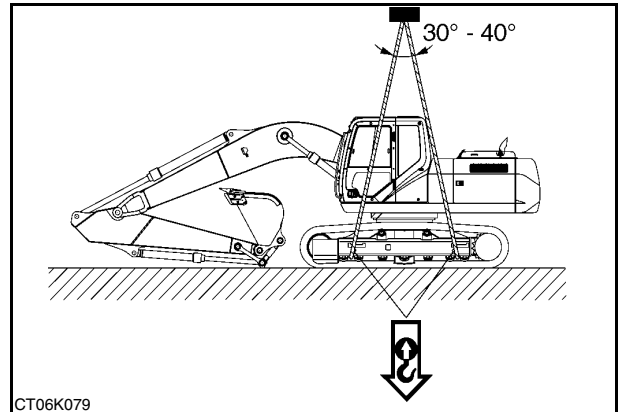
8

**HANDLING THE MACHINE**

Retract the attachment, bucket and dipper cylinders fully extended then place the attachment on the ground. Shutdown the engine and leave the operator's compartment.

**IMPORTANT:** Before handling the machine, make sure the slings are in perfect condition and that they are capable of supporting the weight of the machine. See "Weight" in section 11.

**IMPORTANT:** It is imperative to use the sling points indicated on the machine decals. See "Decals" in section 3.



23

———— **⚠ WARNING ⚠** ————

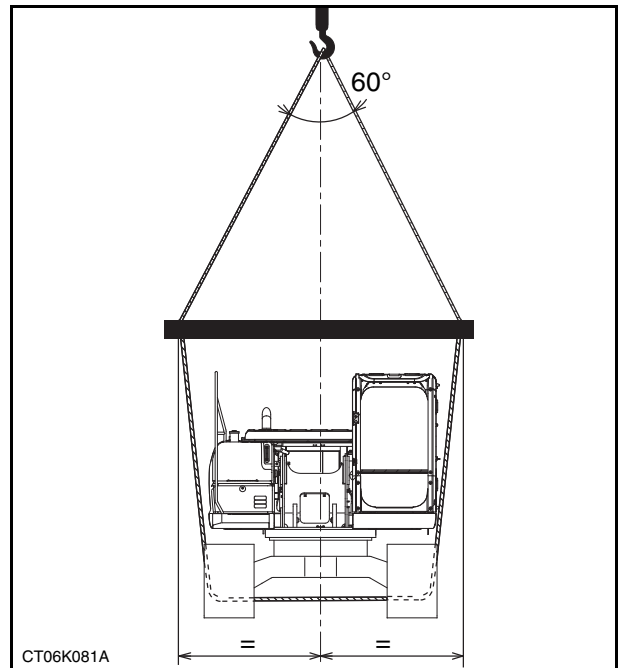
The machine must be handled very slowly and horizontally.

———— **⚠ WARNING ⚠** ————

First of all, assign a person as supervisor to direct the operation and agree on the safety measures, procedures and suitable hand signals.

———— **⚠ WARNING ⚠** ————

The use of lifting systems must be entrusted to qualified personnel. The operators and all the personnel assigned to this operation must be perfectly aware of the procedures to be followed. Check the lifting devices and cables and make sure that they are in good condition, suitable for lifting the load to be handled and fitted with safety type hooks that will not accidentally open.



24

———— **⚠ WARNING ⚠** ————

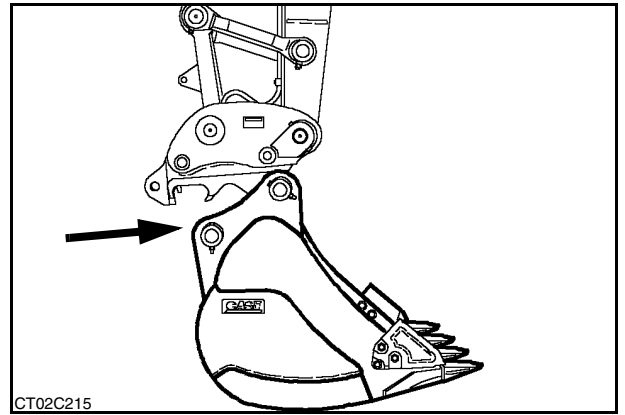
Since this operation may be dangerous, you are advised to wear suitable clothing and to respect the relevant safety measures.

———— **⚠ WARNING ⚠** ————

Make sure that there is nobody within the working area during handling operations.

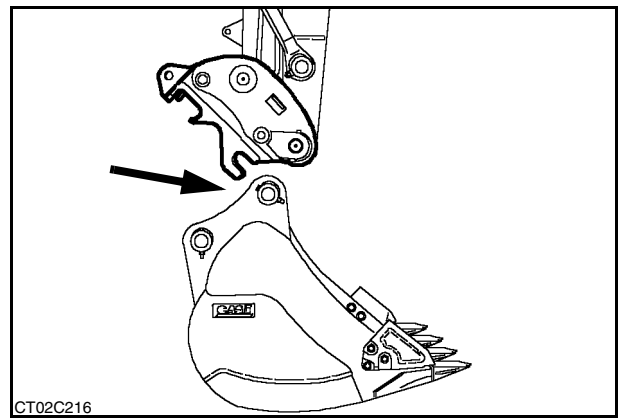
## SECTION 5 - OPERATING INSTRUCTIONS

3. Operate the bucket control to lay the bucket safely on flat, level ground.



42

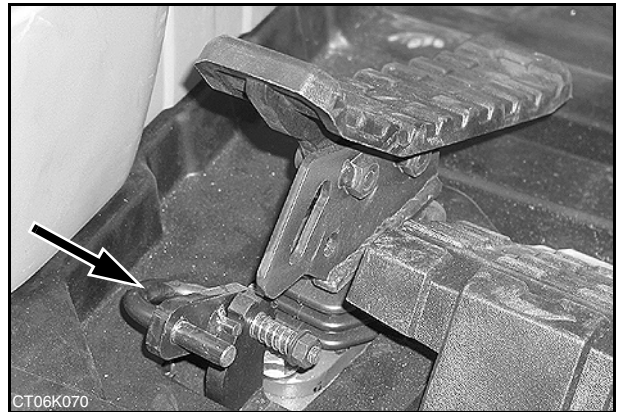
4. Operate the dipper control to unhook the tool.



43

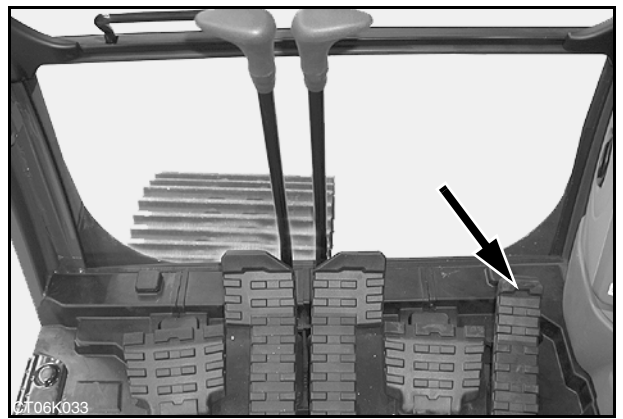
## SECTION 5 - OPERATING INSTRUCTIONS

6. Unlock the pedal.



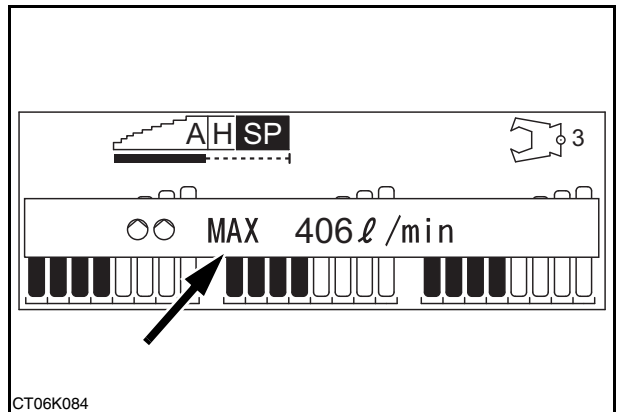
63

7. Use the control pedal to operate the cutter crusher.



64

8. During operation the flow is displayed on the screen.



65

CLICK HERE TO **DOWNLOAD** THE COMPLETE MANUAL

- Thank you very much for reading the preview of the manual.
- You can download the complete manual from: [www.heydownloads.com](http://www.heydownloads.com) by clicking the link below



- Please note: If there is no response to CLICKING the link, please download this PDF first and then click on it.

CLICK HERE TO **DOWNLOAD** THE COMPLETE MANUAL

## SECTION 6

### SERVICING INTERVALS

#### SERVICING INSTRUCTIONS

Respect the maintenance intervals by checking the hourmeter every day. Before starting maintenance, park the machine on flat, firm ground, away from any obstacles, with the dipper retracted and the bucket on the ground. Unless otherwise specified, all maintenance operations must be carried out with the engine stopped, the key removed from the starter switch and the key of the battery master switch in "O" (Off) position. It is preferable to wait for all circuits to cool down before starting work.

Clean the grease fittings before lubrication. Clean around plugs and filler holes before adding fluid. No dust or dirt must enter the components or the circuits. Wear suitable clothing and remember to use the necessary safety equipment.



There is a risk of serious injury if maintenance or repairs are not carried out correctly. If you do not understand maintenance procedures, consult your CASE Dealer.

---



If the attachment is raised or if the machine moves without an operator, serious injury can result. Before performing any maintenance, proceed as follows:

1. Park the machine on flat, level ground.
  2. Lower the attachment until it is resting on the ground.
  3. Shut down the engine and remove the starter switch key.
  4. Lock the tracks to prevent any machine movement.
- 



Be sure all the service operations in this section are carried out punctually at the intervals given, in order to ensure optimum performance levels and maximum safety when using the machine.

---

When carrying out service work on the machine, place a "Do not operate" tag on the instrument panel. Never climb down from the operator's compartment leaving the engine running.

Remove the necessary lower panels during maintenance of certain machine components.



Before undertaking any travel, make sure the lower panels are correctly closed.

---

Any modification to this machine without prior authorization could cause serious injury. Do not make any modifications without authorization. Consult your CASE Dealer.

**IMPORTANT:** *If you use your machine in particularly harsh conditions (dusty or corrosive atmosphere, etc.), the servicing intervals should be reduced accordingly.*

**IMPORTANT:** *Take particular care to replace all filters regularly. Clean filters mean longer engine running life.*

**IMPORTANT:** *Oil and fluid should not be thrown on the ground. They must be stored and removed by a company which is responsible for their recycling or their disposal.*

### FUEL

The fuel used must comply with the Tier 3 emission control regulations.

Use grade No. 2-D fuel. The use of other types of fuel can result in a loss of power of the engine and may cause high fuel consumption.

In cold weather (below  $-7^{\circ}\text{C}$ ), it is provisionally approved to use a mixture of fuels No. 1-D and No. 2-D. Consult your fuel supplier or your CASE Dealer.

If the temperature falls below the fuel cloud point (point at which wax begins to form) the wax crystals will cause power loss or will prevent the engine from starting.

#### Conditions applicable to diesel fuel

The diesel fuel used must:

- be free from dust particles, even minute ones,
- have the proper viscosity,
- have a high cetane number,
- present great fluidity at low temperatures,
- have low sulphur content,
- have very little residual carbon.

#### Recommendations applicable to diesel fuel

- JIS (Japanese Industrial Standard): No. 2
- DIN (Deutsche Industrie Normen): DIN 51601
- SAE (Society of Automotive Engineers) according to SAE-J-313C: No. 2-D
- BS (British Standard) according to BS/2869-1970: Class A-1
- EN 590
- or fuel corresponding to these standards and stipulated in your country.

**IMPORTANT:** *If you use fuel which has a sulphur content of more than 2500 ppm, use API grade CF-4 or JASO grade DH-1 engine oil. However, if these specifications cannot be met, it is imperative that the engine servicing intervals are reduced to 250 hours (oil change, filters etc.). Every 3000 hours, the injectors and EGR (Exhaust Gas Recirculation) circuit parts must be checked and replaced by your CASE Dealer.*

**IMPORTANT:** *Use of any other fuel can cause serious breakdown and will cancel the guarantee.*

Using fuels other than those recommended can damage the fuel injection pump, the injector and other parts of the fuel supply system and the engine. **The CASE company disowns any responsibility concerning this kind of damage, which is not covered by the guarantee.** To avoid any damage to the engine fuel supply system, you are recommended to take the following safety messages into account:

- Certain fuel suppliers mix used engine oil with diesel fuel.

Certain manufacturers of large engines allow them to do this. However, for your engine, do not use diesel fuel contaminated by engine oil. In addition to damaging the engine, this fuel can actually adversely affect the correct purification of exhaust gases. Before using diesel fuel, ask the supplier to confirm that it meets the above specifications.

**IMPORTANT:** *For a proper use of fuel additives consult your supplier or your CASE Dealer. Do not inject fuel oil or gasoline, both fuels can damage the engine.*

**IMPORTANT:** *In cold weather, fill the fuel tank at the end of the day's work, in order to prevent the formation of condensation.*

#### Fuel storage

Long storage can lead to the accumulation of impurities and condensation in the fuel. Engine trouble can often be traced to the presence of water in the fuel.

The storage tank must be placed outside and the temperature of the fuel should be kept as low as possible. Drain off water and impurities regularly.

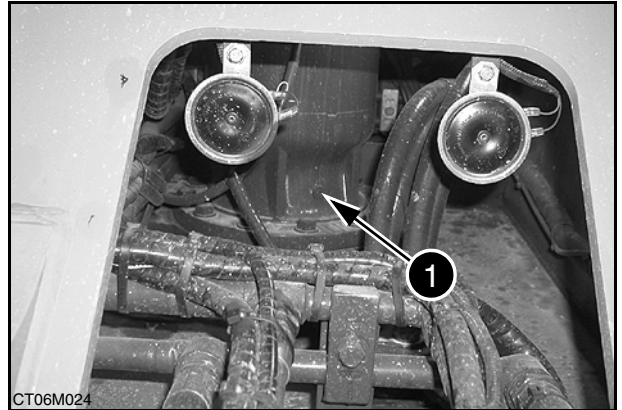
**GREASING THE SWING REDUCTION GEAR**

Grease capacity.....0.9 kg  
Type of grease ..... See "Fluids and lubricants"

**Every 2000 hours**

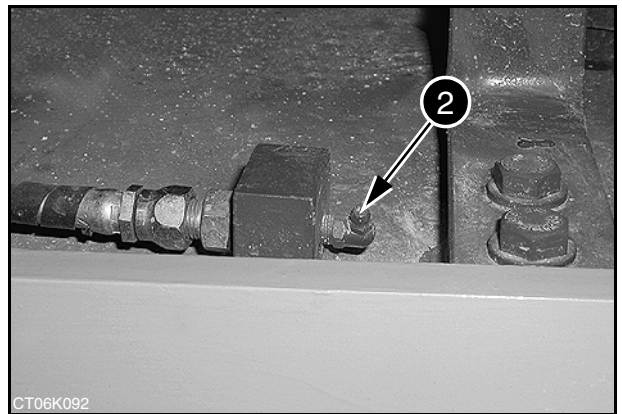
Remove the lower panel, remove the air bleed plug (1) and refill with grease through the grease point (2). A certain amount of grease should run out from the air bleed plug (1). Install the air bleed plug (1) then install the lower panel.

**IMPORTANT:** When greasing, the inner seal will be damaged if the air bleed plug (1) is not removed.



21

The grease point (2) is located on the upperstructure frame under the boom foot.



22

**PRE-FILTER BLEEDING**

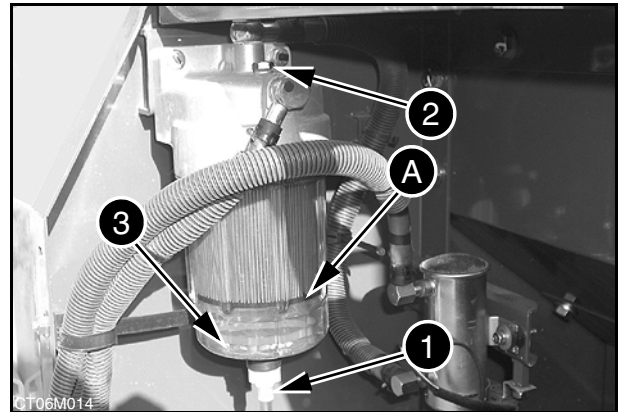
When the float reaches the level line (A):

1. Place a receptacle of a suitable capacity under the pre-filter.
2. Loosen the drain plug (1) and the bleed screw (2) then drain the water and sediment.
3. When the float (3) settles on the bottom, tighten the drain plug (1) to a torque of between 8 and 12 Nm, then tighten the bleed screw (2).

**IMPORTANT:** Overtightening can damage the seal.

4. Check for any signs of leak.

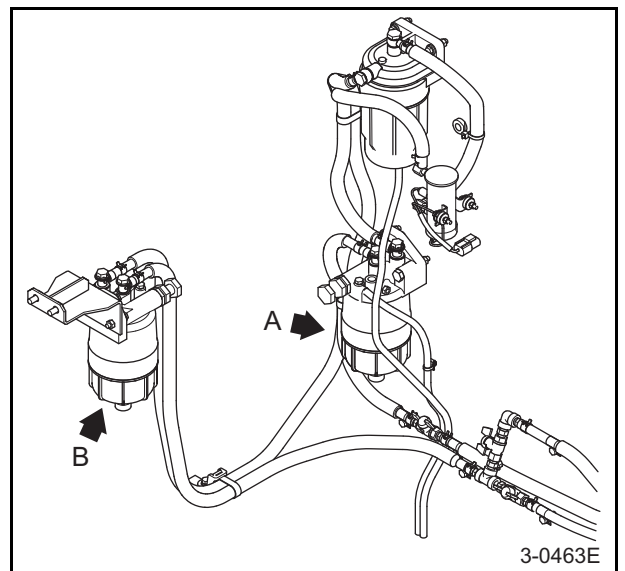
**NOTE:** In cold weather, the water can freeze on the top part of the bowl. Bleed after the ice has melted.



**CHANGING THE PRE-FILTER ELEMENT**

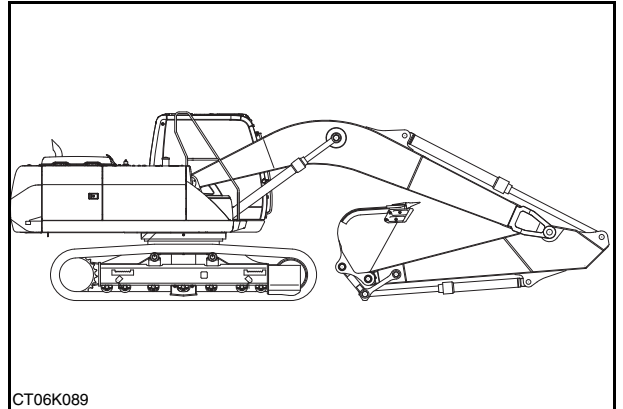
—————  **WARNING**  —————

If a fuel filter other than a genuine CASE filter is used, the guarantee will not be applied to a fault caused by the use of a wrong filter.



**LEVEL IN THE RESERVOIR**

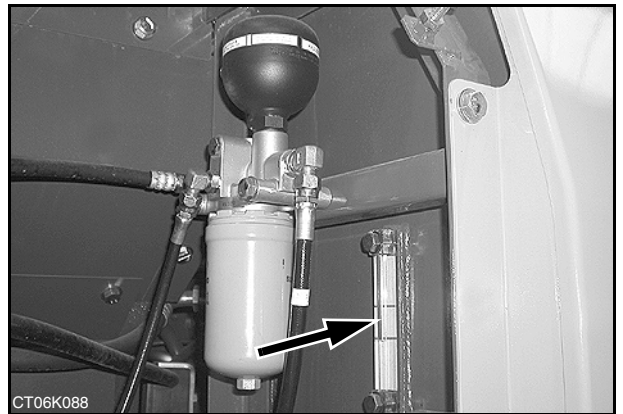
1. Place the machine on flat, level ground and place the attachment in the position shown. Stop the engine and remove the starter switch key.



CT06K089

65

2. The oil should be in the middle of the indicator. Add more oil if necessary. See "Filling the reservoir".



CT06K088

66

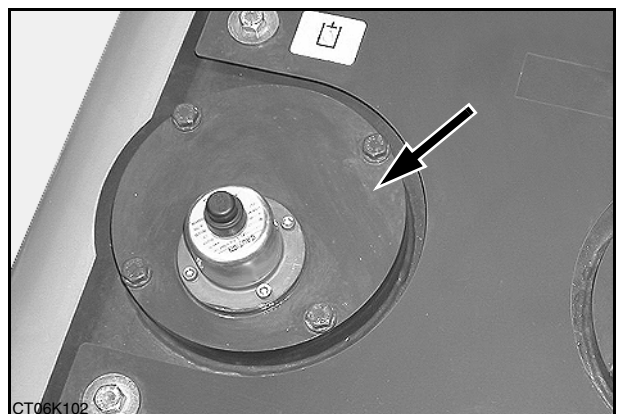
**FILLING THE RESERVOIR**

1. Release all pressure in the hydraulic reservoir. See "Releasing pressure in the hydraulic system".
2. Clean the cover plate and the area around the plate. Remove the cover plate and add hydraulic fluid to the reservoir as required.
3. Replace the cover plate seal if required and install the cover plate.



**WARNING**

Make sure that no contaminant (water, sand etc.) enters the reservoir during filling.



CT06K102

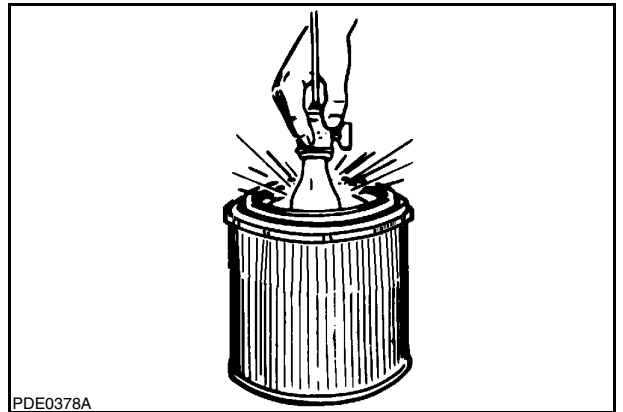
67

## SECTION 7 - LUBRICATION/FILTERS/FLUIDS

### INSPECTING THE ELEMENT

Check the element for damage by placing an inspection lamp inside the element.

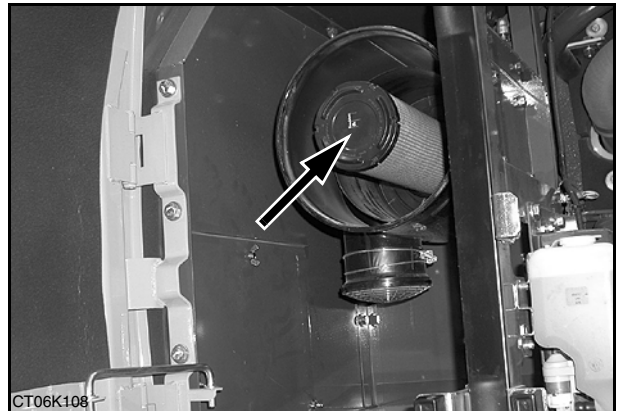
**IMPORTANT:** Change the element if light can be seen through a hole, however small.



85

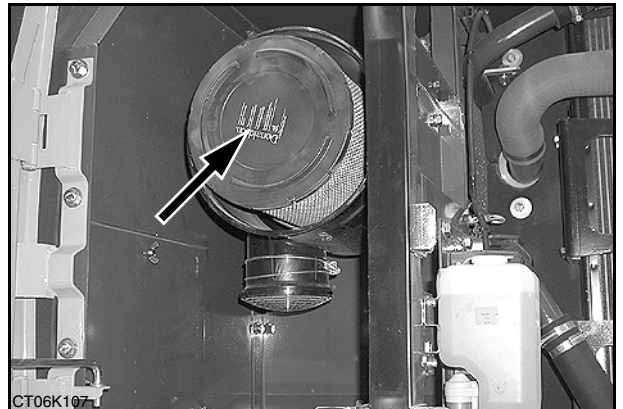
### INSTALLING THE ELEMENTS

1. Install the secondary element.



86

2. Install the primary element.



87

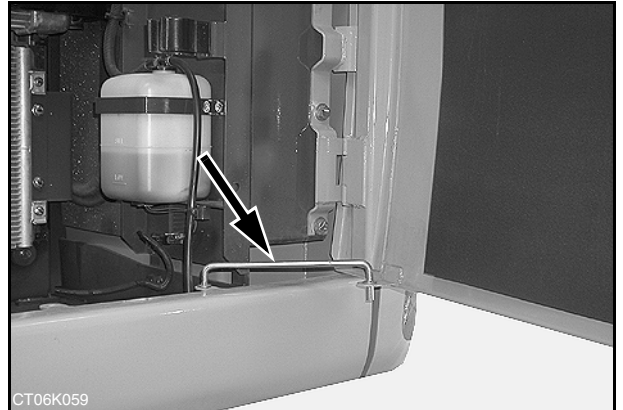
## RADIATORS AND OIL COOLERS

### MAINTENANCE SPECIFICATIONS

Check for leakage ..... Every 10 hours or every day  
Clean ..... Every 500 hours

### CLEANING

1. Stop the engine and remove the starter switch key.
2. Open the rear LH side door and block it with the supporting strut, then open the engine hood.



11

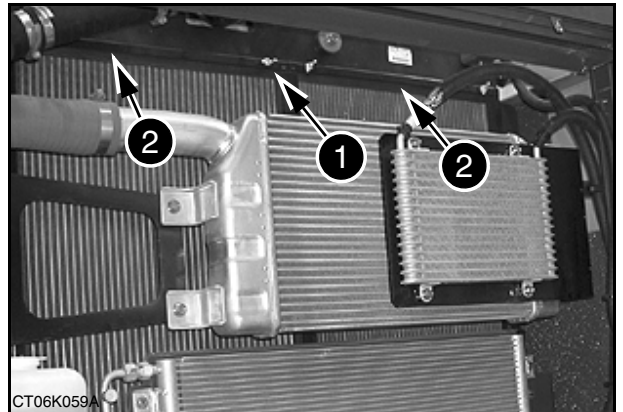
3. Remove the wing nuts (1) and remove the protection grilles (2).

**IMPORTANT:** Make sure your face is protected before using compressed air.

4. Clean the radiators and the oil coolers:
  - Dry dust: use compressed air.
  - Mud: use a water jet.
  - Greasy dust: use perchlorethylene.

**IMPORTANT:** The use of trichlorethylene is strictly forbidden.

5. Install the protective grilles (2) then install the wing nuts (1).



12



Before any travel operation make sure that the locking of the engine hood and rear LH side door is correct.

### CHECKING THE QUICK COUPLER LATCHING HOOK OPENING (optional)

#### MAINTENANCE SPECIFICATION

Check ..... Weekly  
and each time the quick coupler is installed

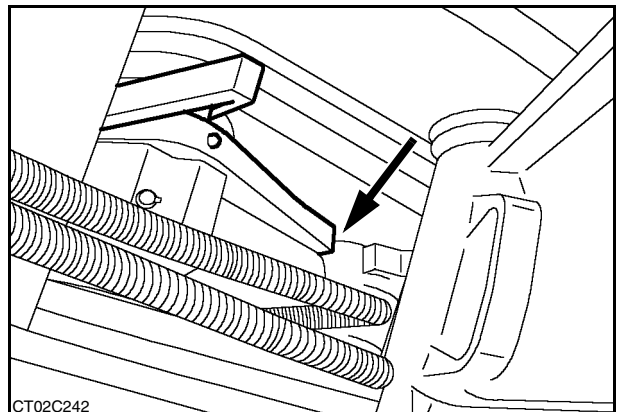
**IMPORTANT:** It is imperative to carry out this check once a week and each time the quick coupler is installed.

1. Place the switch in unlocking position. The audible alarm device will sound.  
See "Quick coupler locking and unlocking control switch" in section 4.



29

2. Operate the bucket control to retract the cylinder rod completely and maintain the hydraulic pressure so the latching hook retracts and comes up against the locking bar.



30

## SECTION 9

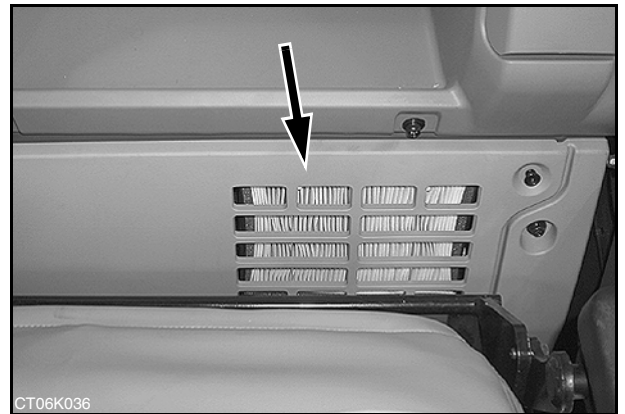
### ELECTRICAL SYSTEM

#### FUSES

**IMPORTANT:** Before changing fuses or relays, turn the starter switch key to the "Shut down" position, wait one minute minimum and place the key of the battery master switch in "O" (Off) position.

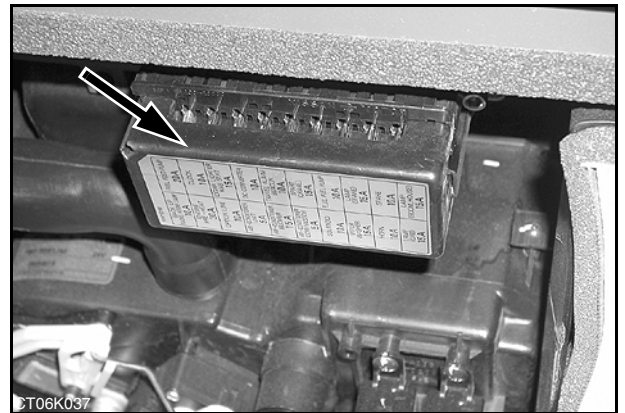
**IMPORTANT:** Never replace a fuse with a fuse of a different amperage.

To access the fuse box, open the panel located behind the operator's seat.



1

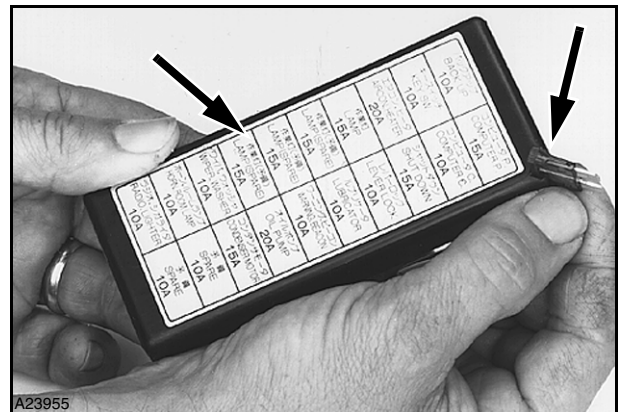
To access the fuses, remove the cover of the box.



2

A notice on the cover gives the function and amperage of each fuse.

**NOTE:** To remove or install a fuse, use the notch in the upper right-hand corner of the cover.



3

## SECTION 10

### STORAGE

#### STORING THE MACHINE

##### PREPARATION FOR STORAGE

The following procedure applies when the machine is to be stored for a month or more. Store the machine on flat, level ground, inside a building or, if not possible, outside and covered with a tarpaulin. Before storing the machine, carry out the following operations:

1. Clean the machine.
2. Make sure that the machine has no damaged or missing parts. Replace them if necessary.
3. Retract the cylinder rods as far as possible and lower the boom until the attachment is resting on the ground.
4. Grease the machine thoroughly. The exposed surfaces of the cylinder rods should be greased or covered with a protective film. Consult your CASE Dealer.

**NOTE:** *When the machine resumes service, the film will disappear automatically.*

5. While the engine is still warm, drain the oil sump, replace the oil filter and fill with specified oil. Check the oil level and add more if necessary.
6. Clean or replace the air filter element.
7. Check the level of coolant solution. If the machine is within 100 hours of the next scheduled coolant change, change the coolant now.
8. Place the key of the battery master switch in "O" (Off) position.
9. Remove the batteries, clean the battery housings and make sure not to leave any traces of acid. Store the batteries safely in a cool and dry location, where the temperature is higher than 0 °C or disconnect the cable from the negative (-) terminal.
10. Paint any areas where the paintwork is not good.
11. Plug the air filter inlet and the exhaust pipe.
12. Remove the starter switch key and place a "Do not operate" label on the right-hand control arm and then place the function cancellation lever in the central position (safety bar in inward position).
13. Lock the hoods, side doors and the cab door.

##### PERIODIC CHECKS

Every month, check:

1. The battery charge and recharge the batteries if required.
2. The levels and top up if necessary.
3. The condition of all lines, connectors and clamps (rust). Grease if necessary.
4. The condition of the paintwork. Apply a coat of anti-rust treatment where necessary.
5. Unplug the air filter inlet and the exhaust pipe.
6. Run the engine at low speed following the starting up procedure and operate the attachment, swing and travel controls.

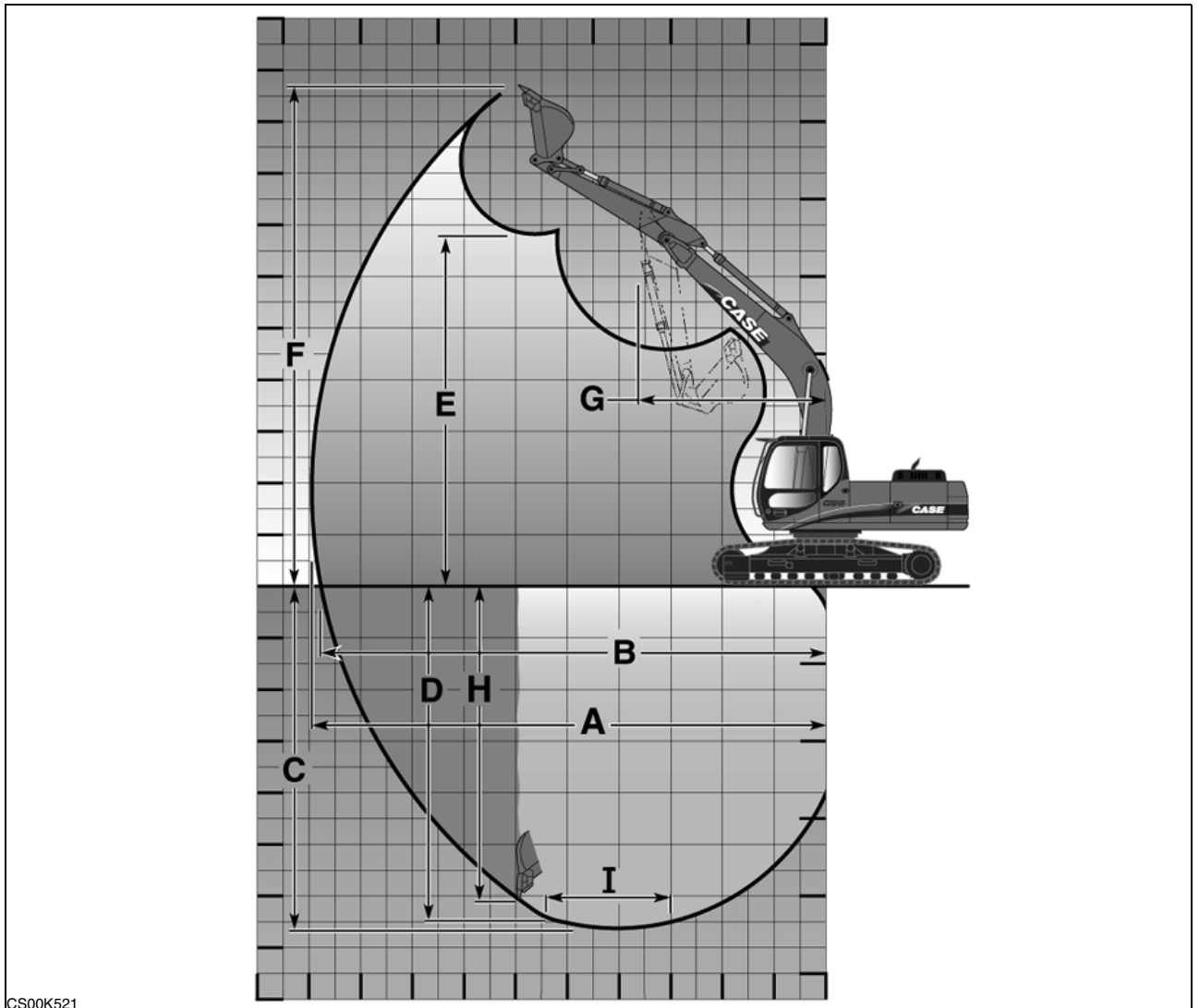


Avoid running the engine in a confined place. Make sure there is adequate ventilation at all times..

7. The grease on the cylinder rods.
8. Plug the air filter inlet and the exhaust pipe.

**WORKING RANGE**

(CX210B) monobloc boom



CS00K521

2

<b>Dippers</b>	<b>1.90 m</b>	<b>2.40 m</b>	<b>2.95 m</b>
(A) (Maximum digging depth).....	8.96 m.....	9.42 m.....	9.90 m
(B) (Maximum digging depth at ground level).....	8.77 m.....	9.24 m.....	9.73 m
(C) (Maximum digging depth).....	5.61 m.....	6.11 m.....	6.65 m
(D) (Maximum digging depth over a length of 2.44 m).....	5.37 m.....	5.90 m.....	6.47 m
(E) (Maximum dump height).....	6.39 m.....	6.59 m.....	6.81 m
(F) (Maximum working height).....	9.16 m.....	9.41 m.....	9.61 m
(G) (Minimum attachment swing radius).....	3.58 m.....	3.60 m.....	3.60 m
(H) (Maximum digging depth on a vertical face).....	5.01 m.....	5.50 m.....	5.96 m
(I) (Maximum length of flat-bottomed trench).....	2.44 m.....	2.44 m.....	2.44 m

# **QUICK REFERENCE SECTION GUIDE**

In this appendix you'll find only the specific parts for the model CX210B forestry machine.  
For other contents, please refer to the standard machine operator's manual.

**1 - To the Owner**

**2 - Identification Numbers/Machine Components**

**3 - Safety/Decals/Hand Signals**

**6 - Servicing Intervals**

**7 - Lubrication/Filters/Fluids**

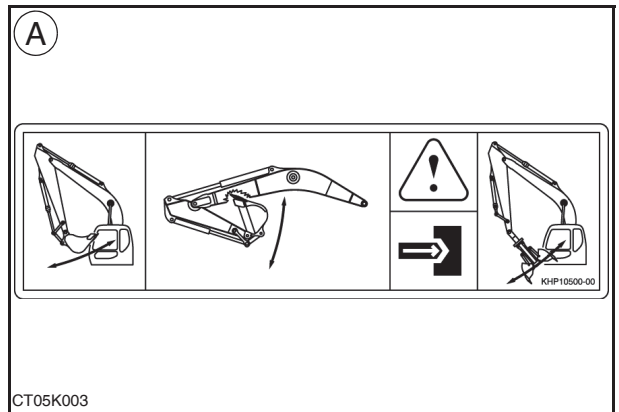
**11 - Specifications**

**12 - Alphabetical Index**

## SECTION 3 - SAFETY/DECALS/HAND SIGNALS

### TOOL INTERFERENCE

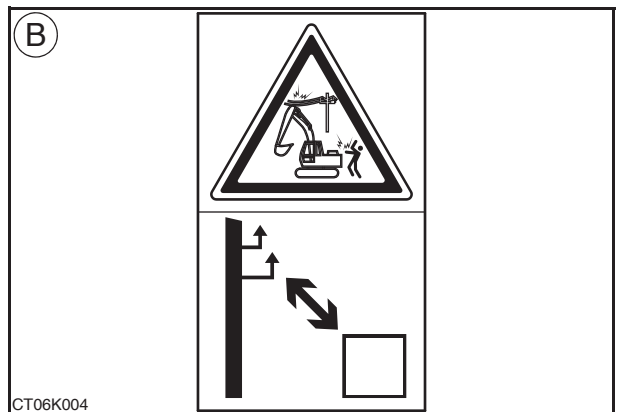
This decal draws attention to the fact that, in certain positions, there can be interference of the tool between the attachment and the operator's compartment. Always observe a minimum safety distance between the tool and the operator's compartment (in case of swinging or accidental movements).



4

### DANGER ELECTRIC LINE

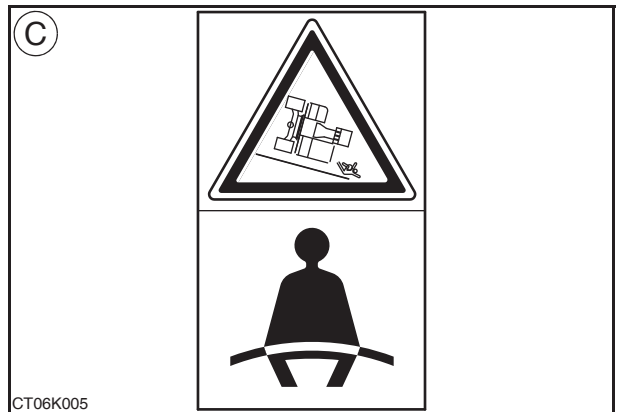
This decal shows that work near overhead high-voltage electric lines must not be done without checking beforehand that all necessary measures have been taken to respect the minimum distances.



5

### SEAT BELT

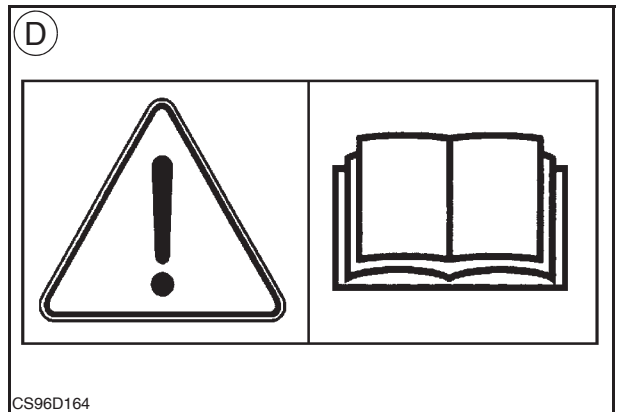
This decal shows that the seat belt must always be fastened.



6

### OPERATOR'S MANUAL

This decal shows that you must read this manual before using the machine.



7

## SECTION 6

### SERVICING INTERVALS

#### SERVICING INSTRUCTIONS

Respect the maintenance intervals by checking the hourmeter every day. Before starting maintenance, park the machine on flat, firm ground, away from any obstacles, with the dipper retracted and the bucket on the ground. Unless otherwise specified, all maintenance operations must be carried out with the engine stopped, the key removed from the starter switch and the key of the battery master switch in "O" (Off) position. It is preferable to wait for all circuits to cool down before starting work.

Clean the grease fittings before lubrication. Clean around plugs and filler holes before adding fluid. No dust or dirt must enter the components or the circuits. Wear suitable clothing and remember to use the necessary safety equipment.



There is a risk of serious injury if maintenance or repairs are not carried out correctly. If you do not understand maintenance procedures, consult your CASE Dealer.

---



If the attachment is raised or if the machine moves without an operator, serious injury can result. Before performing any maintenance, proceed as follows:

1. Park the machine on flat, level ground.
  2. Lower the attachment until it is resting on the ground.
  3. Shut down the engine and remove the starter switch key.
  4. Lock the tracks to prevent any machine movement.
- 



Be sure all the service operations in this section are carried out punctually at the intervals given, in order to ensure optimum performance levels and maximum safety when using the machine.

---

When carrying out service work on the machine, place a "Do not operate" tag on the instrument panel. Never climb down from the operator's compartment leaving the engine running.

Remove the necessary lower panels during maintenance of certain machine components.



Before undertaking any travel, make sure the lower panels are correctly closed.

---

Any modification to this machine without prior authorization could cause serious injury. Do not make any modifications without authorization. Consult your CASE Dealer.

**IMPORTANT:** *If you use your machine in particularly harsh conditions (dusty or corrosive atmosphere, etc.), the servicing intervals should be reduced accordingly.*

**IMPORTANT:** *Take particular care to replace all filters regularly. Clean filters mean longer engine running life.*

**IMPORTANT:** *Oil and fluid should not be thrown on the ground. They must be stored and removed by a company which is responsible for their recycling or their disposal.*

## SECTION 11 - SPECIFICATIONS

---

### ATTACHMENT

Crowd force ..... 15 200 daN  
Break-out force (with 2.94 m dipper)..... 11 000 daN

### UNDERCARRIAGE

One-piece frame with welded components.  
Lubricated track rollers and idler wheels.  
Grease cylinder track tension system.

Steel tracks (mm)		<b>800</b>
Ground pressure (bar) monobloc boom and track pad sizes:	800mm	0.36

CLICK HERE TO **DOWNLOAD** THE COMPLETE MANUAL

- Thank you very much for reading the preview of the manual.
- You can download the complete manual from: [www.heydownloads.com](http://www.heydownloads.com) by clicking the link below



- Please note: If there is no response to CLICKING the link, please download this PDF first and then click on it.

CLICK HERE TO **DOWNLOAD** THE COMPLETE MANUAL