



OPERATOR'S MANUAL
SKID STEER
COMPACT TRACK LOADER

450
450CT
465

87364592 NA
Replaces 6-82092 NA

Revised 01-2007
Issued 08-2005

CLICK HERE TO **DOWNLOAD** THE COMPLETE MANUAL

- Thank you very much for reading the preview of the manual.
- You can download the complete manual from: www.heydownloads.com by clicking the link below



- Please note: If there is no response to CLICKING the link, please download this PDF first and then click on it.

CLICK HERE TO **DOWNLOAD** THE COMPLETE MANUAL

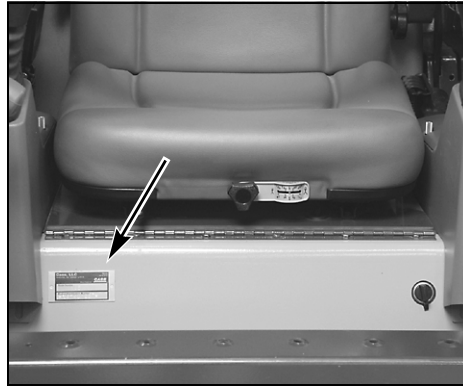
PRODUCT IDENTIFICATION AND SERIAL NUMBERS

Write your machine Model Number, Product Identification Number (P.I.N.) and Serial Numbers on the line provided below. If needed, give these numbers to your dealer when you need parts or information for your machine.

Make a record of the numbers. Keep the record and your Manufacturer's Statement of Origin in a safe place. If the machine is stolen, report the number to your local law enforcement agency.

Model Number

Product Identification Number (P.I.N.)

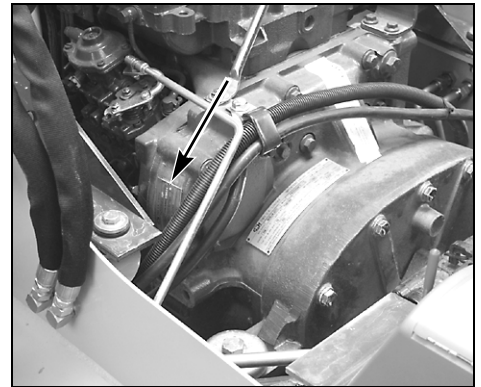


TRIM THIS EDGE

Model Number

P.I.N.

Engine



Serial Number

STARTING AND STOPPING PRECAUTIONS

- Walk around the machine and warn all personnel who may be servicing the machine or are in the machine path prior to starting. Do not start until all personnel are clearly away from the machine. Sound the horn, if equipped, before starting.
- Walk around the machine's tool, attachment, or furthestmost contact point to view operation danger area from the work site personnel view and angle.
- Check that the parking device is applied, place the transmission in neutral or park as specified by the manufacturer, and disengage the PTO, if so equipped, before starting the machine.
- Check that the parking brake is applied, place the ground drive controls in neutral and check that the auxiliary controls or switches are in neutral or off positions, before starting the machine.
- Adjust, secure and latch the seat and fasten the seat belt before starting the machine.
- Start and operate the machine only from the operator's station.
- Do not bypass the machine's interlock system. The interlock system must be repaired if it malfunctions.
- Use jumper cables only in the recommended manner. Improper use can result in battery explosion or unexpected machine motion. Ventilate the battery area before using jumper cables. Make sure that using jumper cables will not interfere or harm electronic processing or computer devices.
- Do not operate the engine in an enclosed area without adequate ventilation.
- Park the machine on level ground whenever possible and apply the parking brake. On grades, park the machine with the wheels or track securely blocked.
- Before leaving the operator's station, lower the equipment to the ground, shut off the engine and place the function cancellation lever into the locked or up position.
- Remove the starter key or disconnect switch when leaving the machine parked or unattended.

TRIM THIS EDGE

TRIM THIS EDGE

LEFT PAGE

Bur 87364592na

450 LOADER LIFT ARM SUPPORT STRUT



WARNING: If you service the machine with the loader lift arms raised, always use the cylinder lock support strut to block up the loader lift arms. Failure to follow this procedure can cause serious injury or death if the loader lift arms are lowered by accident.

M736

IMPORTANT: Installing the Support Strut can be performed as a one or two person procedure so that the operator is not entering or exiting the operators compartment under unsupported loader lift arms.

Before exiting a machine with the boom up engage the support strut:

1. While sitting in the operator's seat with the seat bar down lower the loader lift arms to the ground and stop the engine.



BD04M022

2. Remove the pin from the support strut.
3. After the pin is removed, lower the support strut onto the lift cylinder.



BD04M021

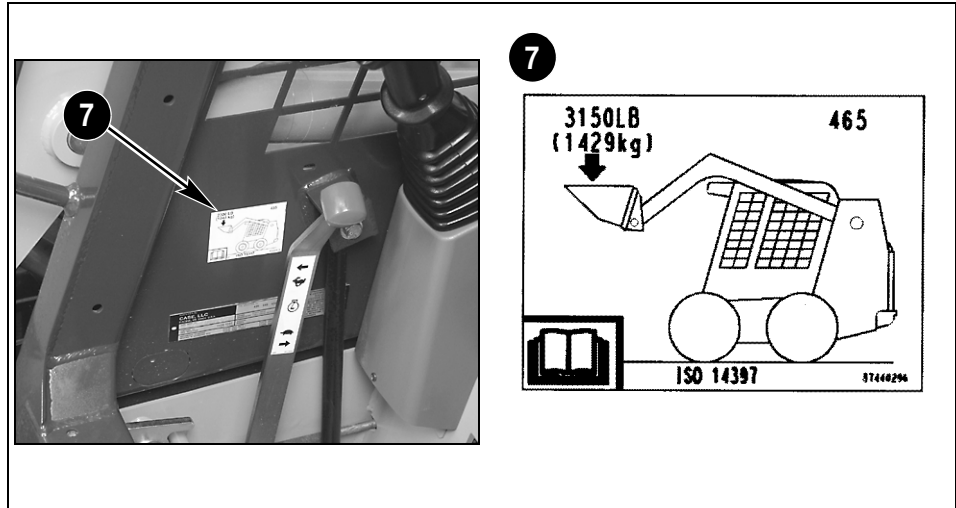
4. Start the engine and slowly raise the loader lift arms until the support strut is on the lift cylinder rod. Lower the loader lift arms until the support strut makes contact with the lift cylinder tube. Stop the engine.



BD04M023

5. Install the pin in the support strut.

TRIM THIS EDGE



7. INFORMATION DECAL: LIFT CAPACITY - 465 SHOWN

BD04H057 / 87440296

- 450 capacity 1111 kg (2450 lbs)
- 450CT capacity 1111 kg (2450 lbs)
- 465 capacity 1360kg (3000 lbs)

TRIM THIS EDGE

<p>WARNING</p> <p>IF YOU SERVICE THE MACHINE WITH LOADER LIFT ARMS RAISED, ALWAYS USE THE SUPPORT STRUT. FAILURE TO FOLLOW THIS PROCEDURE CAN CAUSE SERIOUS INJURY OR DEATH IF THE LOADER LIFT ARMS ARE LOWERED BY ACCIDENT.</p>	<p>PROCEDURE TO USE THE SUPPORT STRUT</p> <ol style="list-style-type: none"> 1. MAKE SURE THE LOADER BUCKET IS EMPTY. LOWER THE LOADER LIFT ARMS TO THE GROUND AND STOP THE ENGINE. 2. REMOVE THE PIN FROM THE SUPPORT STRUT AND LOWER THE SUPPORT STRUT ONTO THE LIFT CYLINDERS. 3. START THE ENGINE AND SLOWLY RAISE THE LOADER LIFT ARMS UNTIL THE SUPPORT STRUT IS ON THE LIFT CYLINDER ROD. SLOWLY LOWER THE LOADER LIFT ARMS UNTIL THE SUPPORT STRUT MAKES CONTACT WITH THE LIFT CYLINDER TUBE. 4. INSTALL THE PIN IN THE SUPPORT STRUT. 	<p>PROCEDURE TO PUT THE SUPPORT STRUT IN STORAGE</p> <ol style="list-style-type: none"> 1. START THE ENGINE AND RAISE THE LOADER LIFT ARMS APPROXIMATELY ONE OR TWO INCHES (25 TO 50mm). 2. STOP THE ENGINE AND RAISE BOTH SEAT BARS. MAKE SURE THE LOADER CONTROLS ARE LOCKED. REMOVE SUPPORT STRUT PIN. RAISE SUPPORT STRUT TO THE STORAGE POSITION AND INSTALL PIN. 3. SIT IN THE SEAT, PUSH BOTH SEAT BARS DOWN, AND LOWER THE LOADER LIFT ARMS TO THE GROUND.
---	---	--

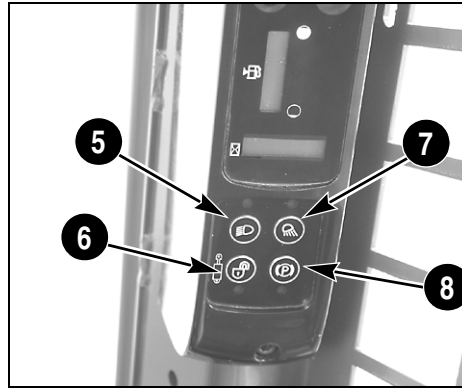
8. WARNING: USE THE SUPPORT STRUT

BK97E009

TRIM THIS EDGE

LEFT PAGE

Bur 87364592na

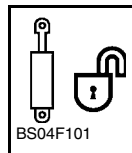


TRIM THIS EDGE



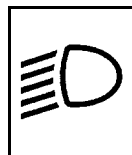
5. Work Lamps:

Depress the work light symbol on this switch to turn the front and rear work lamps on. Depress the switch again to turn them off.



6. Auxiliary Hydraulic Interlock Override:

When an operator leaves the seat, flow to an attachment will normally be halted via engine shutoff or direct hydraulic flow shutoff. Push this button and leave the seat within thirty seconds to defeat this interlock



7. Road Lamps:

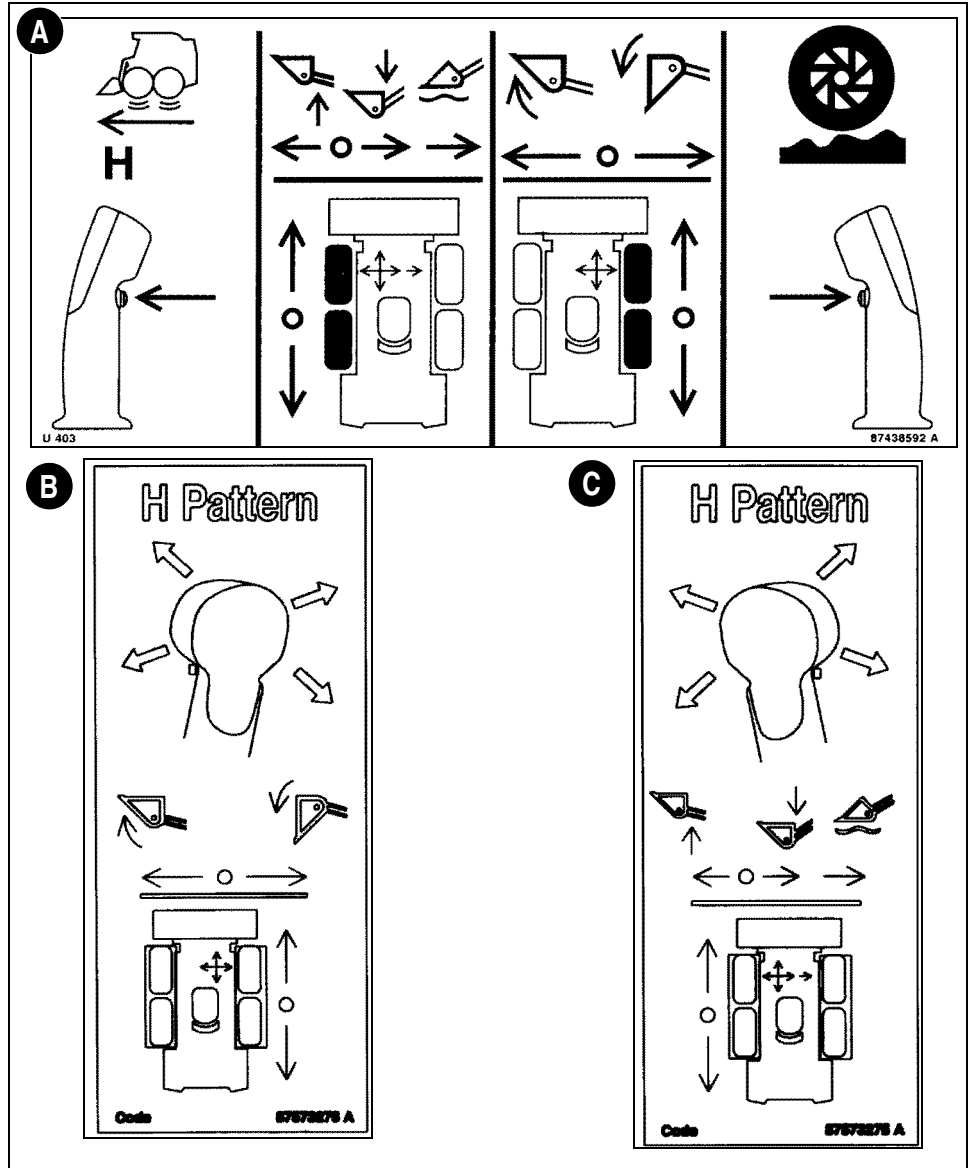
Depress the light symbol on this switch to turn the front lamps and red tail lamps on. Depress the switch again to turn them off.



8. Parking Brake Switch:

This lamp blinks when the Parking Brake is set. The Operator must have the restraint bar down, in the working position, and press the switch to release the brakes. Push the switch again to set the brakes.

Instructional Decals For H Pattern Steering And Controls

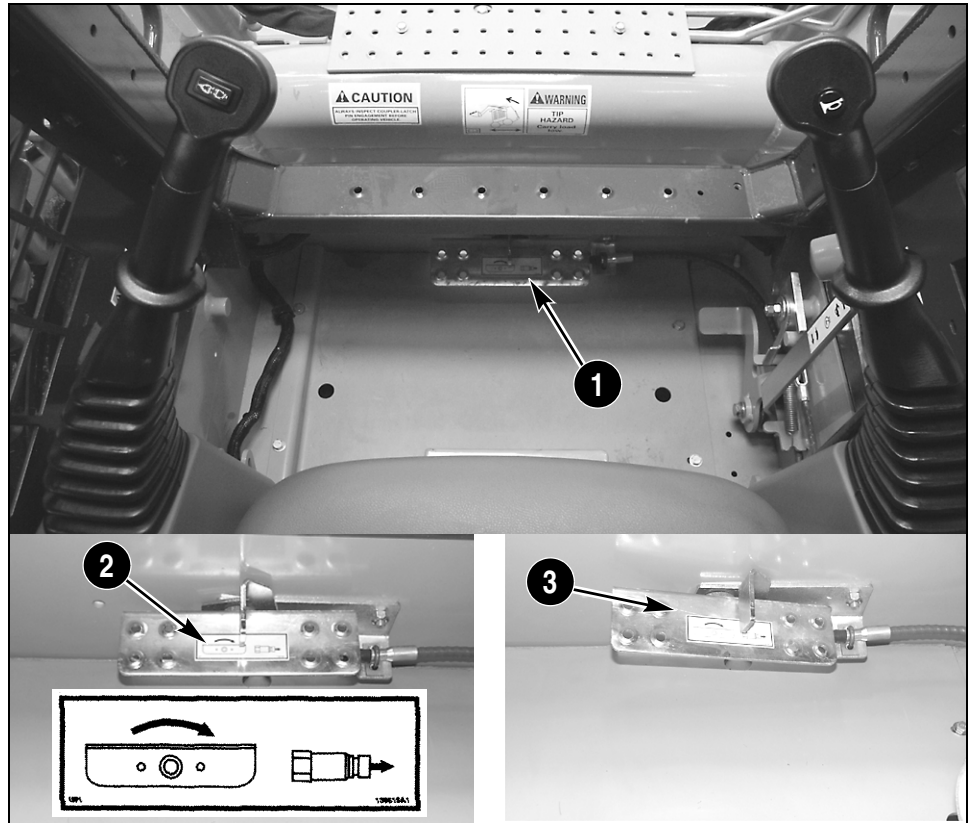


87438592 /

See the control lever application decals on the machine and understand the functions before starting the machine or beginning any operation. Decal (A) shown above, is located on the left inside of the cab. Decal (B) is located on the inside left cab upright. Decal (C) is located on the inside right cab upright. If you have any questions about the operation or function of the control levers contact your Dealer.

AUXILIARY HYDRAULIC ATTACHMENT CONTROL PEDAL

TRIM THIS EDGE



1. AUXILIARY HYDRAULIC CONTROL PEDAL
2. AUXILIARY HYDRAULIC FLOW CONTROL PEDAL DECAL
3. PEDAL IN **ON** POSITION

BD04D105 / BD04D101 / BD04D102



WARNING: Always relieve hydraulic pressure before attaching or removing auxiliary hydraulic attachments.

To relieve pressure:

1. Turn off engine.
2. While sitting in the seat, with the seat bar down, turn key switch to ON position.
3. Push the brake release button.
4. Actuate auxiliary controls switch in both directions several times.
5. Turn key switch to OFF.

TRIM THIS EDGE

LEFT PAGE

Bur 87364592na

NOTES

TRIM THIS EDGE

74

TRIM THIS EDGE

LEFT PAGE

Bur 87364592na

MACHINE OPERATION



WARNING: Before you operate the machine, check the steering control levers, instruments, warning lamps, engine throttle, and equipment hydraulic controls. Also check the restraint bar. When the restraint bar is in the UP position, the park brake light is illuminated, the parking brake is ENGAGED, the loader hydraulic circuit is inoperative and the ground drive is disabled.

If you know there is a malfunction, a missing part, or a part that needs adjustment, stop the machine and correct the problem immediately. Failure to follow these instructions can result in injury or death.



WARNING: DO NOT operate the machine while under the influence of alcohol or drugs.

CM122

TRIM THIS EDGE

1. Set the engine speed at desired throttle setting. Control the machine ground speed with the steering control levers.

NOTE: Running the engine at idle speed for long periods can cause low operating temperatures. A low operating temperature can cause the formation of acids and deposits in the engine oil. It is recommended you run the engine at full throttle when operating conditions permit.

2. If you are a new operator, always operate the machine in an open area at a reduced machine ground speed until you get a feel for the controls. Move the steering control levers slowly and smoothly to avoid machine bouncing. If the machine does start bouncing, release the steering control levers and the machine will come to a stop.
3. Keep all machine and loader movements smooth and the work cycle as short as possible. You can get more done in a shorter time with a smooth short work cycle.

4. Keep the work area as smooth and level as possible.
5. Select the correct tires for the conditions, that is; wide or narrow, pneumatic or non-pneumatic.

JOB SITE OPERATION

1. Before starting work, familiarize yourself with the working area noting any holes, obstacles and debris that can be cleared from the site.
2. Locate any unavoidable danger areas (electric power lines, bridges, tight corners, etc.) and make sure you can work safely in these areas.
3. Electric power lines, gas pipes, water pipes or other underground installations can cause injury or death. Find out about the location of underground installations before you operate your machine in a new area.
4. Clear the area of any unauthorized personnel.

CLICK HERE TO **DOWNLOAD** THE COMPLETE MANUAL

- Thank you very much for reading the preview of the manual.
- You can download the complete manual from: www.heydownloads.com by clicking the link below



- Please note: If there is no response to CLICKING the link, please download this PDF first and then click on it.

CLICK HERE TO **DOWNLOAD** THE COMPLETE MANUAL

HIGH FLOW HYDRAULIC SYSTEM

Gear Pump 204 Bar (3000 PSI) High Flow System

The gear pump 204 Bar (3000 psi) High Flow system supplies more flow than the auxiliary hydraulics, which allows the use of attachments designed for this pressure and flow.

Use the rocker switches on the left hand control lever to either activate the system or deactivate and control flow direction.

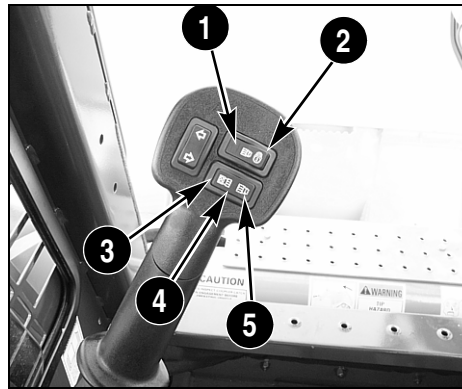
If constant flow is desired, use the top switch.

If intermittent flow is desired, use the lower switch.

The High Flow System should be used as follows:

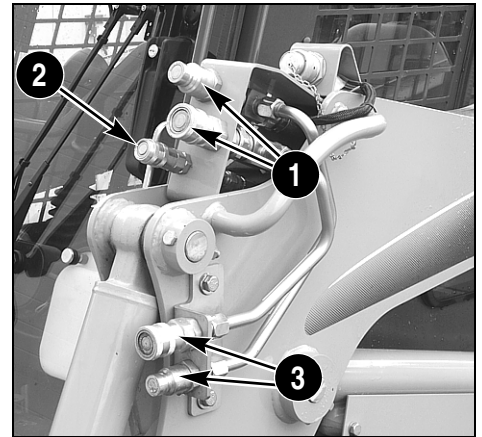
1. Install the attachment, following the manufacturers instructions.
2. Connect the attachment hydraulic hoses to the High Flow couplers located on the left side loader lift arms.

TRIM THIS EDGE



BD05H096

1. OFF
2. ON (DETENT) - MALE COUPLER ENERGIZED
3. ON (MOMENTARY) - FEMALE COUPLER ENERGIZED
4. OFF
5. ON (MOMENTARY) - MALE COUPLER ENERGIZED



BD04C035

1. STANDARD FLOW AUXILIARY HYDRAULIC COUPLERS
2. CASE DRAIN COUPLER
3. HIGH FLOW HYDRAULIC COUPLERS

NOTES

TRIM THIS EDGE

104

TRIM THIS EDGE

LEFT PAGE

Bur 87364592na

SYSTEMGARD LUBRICATION ANALYSIS PROGRAM

Ask your Dealer about a Lubricant Analysis Program. Through this service, your lubricants are tested in an independent laboratory. You simply remove a sample of lubricant from your machine and send the sample to the laboratory. After the sample is processed, the laboratory will report back to you and guide you with maintenance requirements. A Lubricant Analysis Program can help support your equipment up time and provide you with a service that can pay back dividends when you trade for another piece of equipment.

ENVIRONMENT

Before you service this machine and dispose of oil, fluids and lubricants, always remember the environment. Do not put oil or fluids into the ground or into containers that can leak. Check with your local environmental, recycling center or your Dealer for correct disposal information.

TRIM THIS EDGE

EVERY 10 HOURS OR DAILY

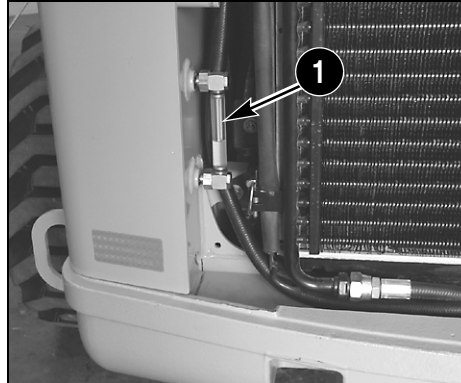
Hydraulic Reservoir Oil Level Check

Specification..... SAE 10W-30 Engine Oil

- 1. Park the machine on a level surface and put the attachment on the ground when you check the oil level.

- 2. Clean the filler cap and the area around the cap to reduce the risk of contamination.
- 3. **Slowly** turn the filler cap 1/2 turn to relieve pressure in the reservoir. **Do not** remove the cap until pressure is relieved.
- 4. Remove the filler cap and add oil as required.

10W-30 Engine Oil is recommended.



BD04C064

1. HYDRAULIC OIL LEVEL SIGHT GAUGE

The hydraulic oil sight gauge is located inside the lower rear access door on the left side.

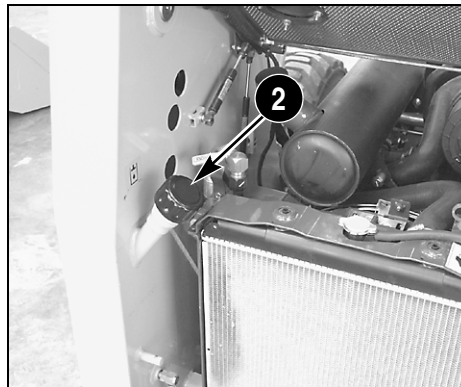
IMPORTANT: The normal fluid level is at the midpoint of the sight gauge when the loader arms and bucket are resting on the ground.

WARNING: Fire Hazard: Do not smoke while filling the hydraulic reservoir. Do not fill near open flames.

M476

- 5. Apply clean oil to the filler cap seal and install the filler cap.

NOTE: The hydraulic and hydrostatic systems use the same reservoir.



BD04B095

2. HYDRAULIC OIL FILL

TRIM THIS EDGE

TRIM THIS EDGE

LEFT PAGE

EVERY 250 HOURS

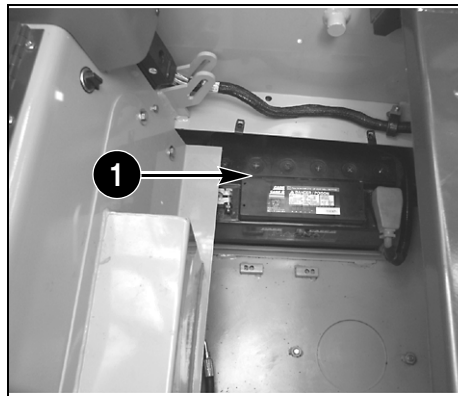
Specification.....distilled water

If the fluid level is low, add distilled water to each cell until the fluid level is at the split ring at the bottom of each cell opening.

IMPORTANT: *If the temperature is 32° F (0° C) or below and you have added water to the battery, do the following: Connect a battery charger to the battery or run the engine for approximately two hours. This procedure is necessary to mix the water with the electrolyte.*

Remove the floor plate.

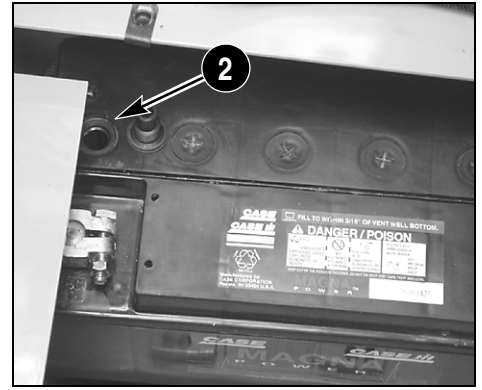
TRIM THIS EDGE



BD01C130

1. BATTERY

Clean the battery and surrounding area to reduce the risk of contamination before removing the battery caps.



BD04C043

2. BATTERY FILL (ONE OF SIX)

Cleaning The Battery

Check the battery every 250 hours for dirt, corrosion and damage. Dirt, mixed with electrolyte or moisture on the top of the battery, can cause a discharged condition in the battery. Use one of the following methods to clean the battery.

1. Use Case Battery Saver, part number M20376. Follow the instructions on the container. This cleaner does not need water.
2. Use baking soda or ammonia and flush the outside of the battery with water. If you do not have Case Battery Saver, use other special cleaners to prevent corrosion on the battery terminals.
3. Spray the battery terminals with battery terminal protector. Do not use grease.

EVERY 500 HOURS

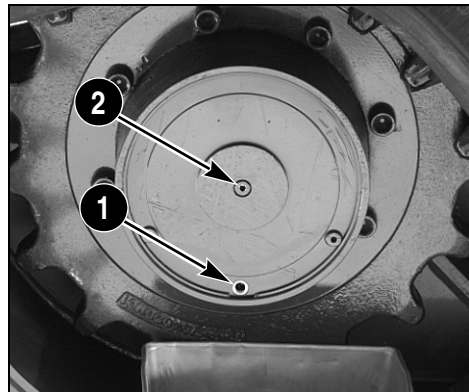
Final Drive Oil Change

Drain and replace the oil in the final drive motors every 500 hours of operation or once a year.

Specification.. Case 135H EP 80W-90 or 85W-140

Capacity 0.55 L (0.58 qt.)

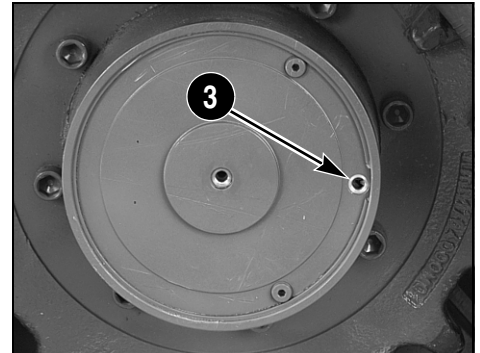
1. Place the machine on firm, level ground with the final drive to be drained in the position shown below.



BD05H004

1. CHECK/FILL AND DRAIN PLUG IN THE DRAIN POSITION
2. CENTER PLUG
2. Slowly remove the drain plug and drain the oil into a suitable container.
3. Slowly remove the center plug to vent and aid in draining.

4. Position the machine to place the check/fill and drain plug into the position shown below.



BD05H010

3. CHECK/FILL AND DRAIN PLUG IN THE CHECK/FILL POSITION
5. Fill with oil until it begins running out of the hole.
6. Install the plugs and repeat the procedure for the other side.

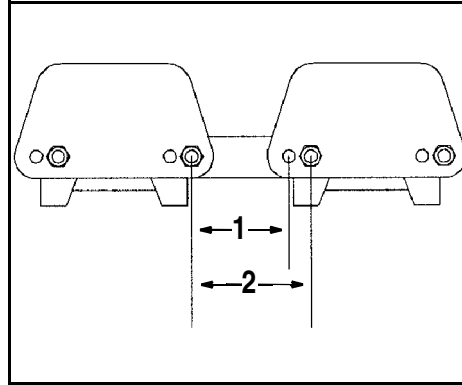
TRIM THIS EDGE

TRIM THIS EDGE

LEFT PAGE

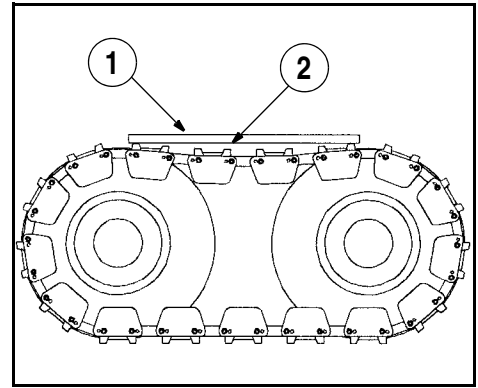
Bur 87364592na

2. Tighten the binder or come-along to relieve the tension in the area where the track link adjustment is to be made.
3. Remove the track link bolt.
4. If the track needs to be shortened move the link to the outer holes.



1. LENGTHENS TRACK
2. SHORTENS TRACK

5. If the track requires lengthening use the inner holes.
6. Install the track link bolt and tighten to 70 to 84 pound-feet (95 to 114 Nm).
7. Remove the binder or come-along and remeasure the track sag.



1. STRAIGHT EDGE
2. TAKE TRACK SAG MEASUREMENT HERE
8. If the track sag is still not correct repeat steps 1 through 7 in a different location.
9. Repeat the procedure on the opposite side of the machine.

10.

TRIM THIS EDGE

WORK LAMPS

Front

1. To replace a bulb, shift the work lamp to one side depressing the spring retainer and lift the opposite side of the work lamp out of the ROPS frame.



BP96N050

2. Rotate the electrical connector and bulb socket on the back of the lamp assembly 1/4 turn.



BP96N048

3. Remove the bulb from the bulb socket and discard.



BP96N049

4. Use tissue paper to hold the new bulb while installing it into the bulb socket. Grease and oil from your skin will shorten the bulb life.
5. Install the bulb socket in the back of the lamp assembly.
6. Install the lamp assembly into the ROPS frame by inserting the SPRING CLAMP SIDE FIRST and depressing the spring. The other side will then slide into the ROPS frame.

Rear



BD01C121

To replace the rear work lamp, open the rear access door and rotate the bulb socket assembly 1/4 turn. Remove the bulb from the socket. Install new bulb.

TRIM THIS EDGE

TRIM THIS EDGE

LEFT PAGE

Bur 87364592na

OPERATING WEIGHTS

Basic Machine

Operating Weight 450	3909 kg (8620 lbs)
Operating Weight 450CT	4951 kg (10915 lbs)
Operating Weight 465	4021 kg (8865 lbs)

NOTE: 450 - 465 operating weight includes 12 x 16.5 tires, 1854 mm (73 in) dirt bucket, mechanical attachment coupler, 75 kg (165 pound) operator, full fuel and standard equipment.

NOTE: 450CT operating weight includes 450 mm (17.7 in) track, 2133 mm (84 in) dirt bucket, mechanical attachment coupler, 75 kg (165 pound) operator, full fuel and standard equipment.

SHIPPING WEIGHTS (APPROXIMATE)

Shipping Weight 450	3567 kg (7865 lbs)
Shipping Weight 450CT	4582 kg (10102 lbs)
Shipping Weight 465	3679 kg (8112 lbs)

NOTE: Shipping weight includes 11.3 L (3 gal) fuel, no bucket and no operator.

ADDITIONAL WEIGHTS FOR OPTIONAL EQUIPMENT

1854 mm (73 in) Buckets:

Long Lip (LL) Dirt	251 kg (553 lbs)
Heavy Duty LL Dirt.....	282 kg (622 lbs)
Utility (LL Dirt W / Extension)	285 kg (628 lbs)
Heavy Duty Utility (Heavy Duty LL Dirt W / Extension	316 kg (697 lbs)

2133 mm (84 in) Buckets:

Long Lip (LL) Dirt	281 kg (620 lbs)
Heavy Duty LL Dirt.....	307 kg (677 lbs)
Utility (LL Dirt W / Extension	306 kg (675 lbs)
Heavy Duty Utility (Heavy Duty LL Dirt W / Extension	343 kg (755 lbs)

2083 mm (82 in) Light Material Bucket

2083 mm (82 in) Light Material Bucket	265 kg (584 lbs)
---	------------------

Pallet Fork 106.7 mm (42 inch) (North America only)

Pallet Fork 106.7 mm (42 inch) (North America only)	245 kg (540 pounds)
---	---------------------

TRIM THIS EDGE

450CT OPERATING DATA AND DIMENSIONS

- A. Dump angle at full height
Dirt and Utility Bucket40 degrees
- B. Dump Height, Maximum Height
Dirt and Utility Bucket 2401 mm (94.5 in)
- C. Dump Reach, Maximum Height
Dirt and Utility Bucket 780 mm (30.7 in)
- D. Overall operating height, max.
Dirt and Utility Bucket 3817 mm (150.3 in)
- E. Height to top of ROPS 2045 mm (80.5 in)
- F. Ground clearance
To Bottom of chain case 229 mm (9.0 in)
- G. Track on ground 1645 mm (64.7 in)
- H. Overall length without Attachment 2760 mm (108.7 in)
- J. Overall length with attachment on ground
Dirt and Utility Bucket 3576 mm (140.8 in)
- K. Clearance circle, front (without bucket)..... 1486 mm (58.5 in)
- L. Clearance circle, front (with Attachment)
2.08 m (84 in) Dirt Bucket..... 2309 mm (90.9 in)
- M. Clearance circle, rear..... 1521 mm (59.9 in)

TRIM THIS EDGE

CLICK HERE TO **DOWNLOAD** THE COMPLETE MANUAL

- Thank you very much for reading the preview of the manual.
- You can download the complete manual from: www.heydownloads.com by clicking the link below



- Please note: If there is no response to CLICKING the link, please download this PDF first and then click on it.

CLICK HERE TO **DOWNLOAD** THE COMPLETE MANUAL