

Owner's, Operating, and Parts Manual

Model RG30 - Hand Pallet Trucks

Owner's, Operating Instructions, and Replacement Parts Manual

Model RG30 - Hand Pallet Trucks



RAYMOND

CLICK HERE TO **DOWNLOAD** THE COMPLETE MANUAL

- Thank you very much for reading the preview of the manual.
- You can download the complete manual from: www.heydownloads.com by clicking the link below



- Please note: If there is no response to CLICKING the link, please download this PDF first and then click on it.

CLICK HERE TO **DOWNLOAD** THE COMPLETE MANUAL

Parking the Hand Pallet Lift Truck

- Use extreme care when cornering. If operating at too high a speed, the load could fall from the hand pallet lift truck.

Parking the Hand Pallet Lift Truck

When parking the hand pallet lift truck, follow these instructions:

- Make sure that the fork frame is fully lowered.
- *Never* park on an incline or with a raised load.
- *Never* park in areas that could obstruct other traffic or work areas.
- *Never* park in areas that could cause personal injury or damage to any equipment.

Selected OSHA Regulations for Lift Trucks

- The employer shall ensure that each powered industrial truck operator is competent to operate a powered industrial truck safely, as demonstrated by the successful completion of the training and evaluation specified in this paragraph. (l) (1) (i)
- Prior to permitting an employee to operate a powered industrial truck (except for training purposes), the employer shall ensure that each operator has successfully completed the training required by this paragraph. (l) (1) (ii)
- Trainees may operate a powered industrial truck only under the direct supervision of persons who have the knowledge, training, and experience to train operators and evaluate their competence and where such operation does not endanger the trainee or other employees. (l) (2) (i) (A) (B)
- Training shall consist of a combination of formal instruction (e.g. lecture, discussion, interactive computer learning, videotape, written material), practical training (demonstrations performed by the trainer and practical exercises performed by the trainee), and evaluation of the operator's performance in the workplace. (l) (2) (B) (ii) [Editorial Note: For required training program content, refer to (l) (3) (i) (A-M) and (l) (3) (ii) (A-I).]
- Refresher training, including an evaluation of the effectiveness of that training, shall be conducted as required by paragraph (l) (4) (ii) to ensure that the operator has the knowledge and skills needed to operate the powered industrial truck safely. (l) (4) (i)
- An evaluation of each powered industrial truck operator's performance shall be conducted at least once every three years. (l) (4) (iii)

Selected OSHA Regulations for Lift Trucks

Note: *Some or all of the following may not be applicable to your hand pallet lift truck.*

The use of forklift trucks in the workplace is governed by various regulations. In the United States, the Federal Occupational Safety and Health Administration (OSHA) has issued regulations which cover the majority of workplaces.

In addition, several states have implemented regulations which apply instead of the Federal regulations.

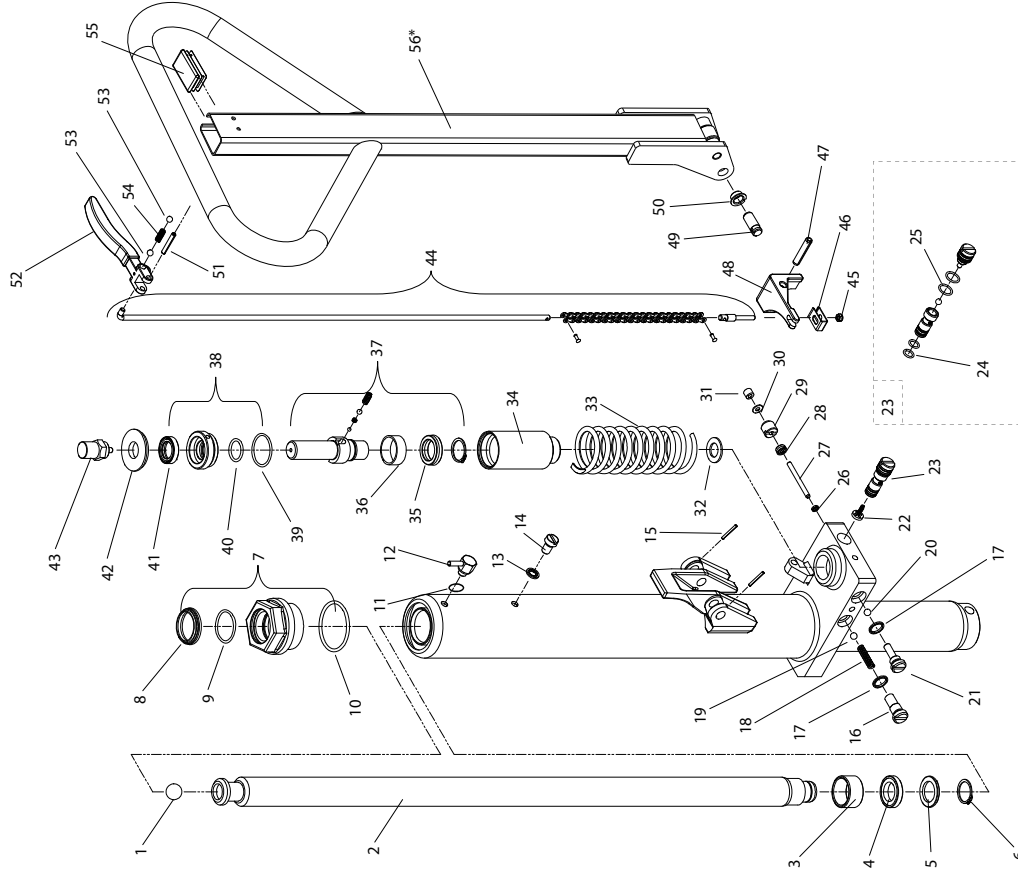
Check with your local OSHA office or provincial Labor Bureau to confirm which regulations govern your workplace.

Because of their wide applicability, this section of your manual lists several parts of the Federal OSHA regulations that might be of particular importance to your workplace.

The full text of the Federal regulations can be found in the Code of Federal Regulations at 29 CFR Section 1910.178.

The following citations are followed by a reference to the appropriate subparagraph of the regulations.

- Modifications and additions which affect capacity and safe operation shall not be performed by the customer or user without manufacturers prior written approval. Capacity, operation and maintenance instruction plates, tags or decals shall be changed accordingly. (a) (3)
- The user shall see that all nameplates and markings are in place and are maintained in a legible condition. (a) (6)



ERGOPUMPMANUAL

Figure 5: Pump and Handle Assembly, Manual

Electrical Components

FIGURE 7 ITEM NO.	QTY	PART NUMBER	DESCRIPTION	USED ON
1	1	1134731	Charger, Battery	
2	1	1-074-087/005	Clamp, Cable	
3	3	49854-09	Battery Connector	
4	1	PC-3017	Button, Lift	
5	1	1160927/001	Power Pack, Hydraulic	
6	1	1130733	Harness (Main)	
7	1	1099187/018	Battery Cable, 14 in.	
8	1	1099187/019	Battery Cable, 20.5 in.	
9	2	301253-000	Cover, Terminal	
10	1	1130732	Connector/Harness, Remote	
11	1	22226-02	Solenoid	
12	2	11813-23	Grommet	
13	1	15677-11	Clamp, Cable	
14	1	590-587/105	Fuse	R
15	1	307371-000	Standoff	
17	1	PR-8574	Valve, Descent (Not Shown)	
18	3	49852-08	Lug Set, Battery Connector (Not Shown)	

R= Recommended Spare

List 7: Electrical Components

CLICK HERE TO **DOWNLOAD** THE COMPLETE MANUAL

- Thank you very much for reading the preview of the manual.
- You can download the complete manual from: www.heydownloads.com by clicking the link below



- Please note: If there is no response to CLICKING the link, please download this PDF first and then click on it.

CLICK HERE TO **DOWNLOAD** THE COMPLETE MANUAL