

Operator's Manual

Light Tower

LTN6L-V

50 Hz CE



| | |
|----------|------------|
| Type | LTN6L-V |
| Document | 5200004260 |
| Date | 0517 |
| Revision | 04 |
| Language | EN |



CLICK HERE TO **DOWNLOAD** THE COMPLETE MANUAL

- Thank you very much for reading the preview of the manual.
- You can download the complete manual from: www.heydownloads.com by clicking the link below



- Please note: If there is no response to CLICKING the link, please download this PDF first and then click on it.

CLICK HERE TO **DOWNLOAD** THE COMPLETE MANUAL

1 Safety Information

1.1 Signal Words Used in this Manual

This manual contains DANGER, WARNING, CAUTION, *NOTICE*, and NOTE signal words which must be followed to reduce the possibility of personal injury, damage to the equipment, or improper service.



This is the safety alert symbol. It is used to alert you to potential personal hazards.

- ▶ Obey all safety messages that follow this symbol.



DANGER

DANGER indicates a hazardous situation which, if not avoided, will result in death or serious injury.

- ▶ To avoid death or serious injury from this type of hazard, obey all safety messages that follow this signal word.



WARNING

WARNING indicates a hazardous situation which, if not avoided, could result in death or serious injury.

- ▶ To avoid possible death or serious injury from this type of hazard, obey all safety messages that follow this signal word.



CAUTION

CAUTION indicates a hazardous situation which, if not avoided, could result in minor or moderate injury.

- ▶ To avoid possible minor or moderate injury from this type of hazard, obey all safety messages that follow this signal word.

NOTICE: Used without the safety alert symbol, NOTICE indicates a situation which, if not avoided, could result in property damage.

Note: A Note contains additional information important to a procedure.

1.9 Hydraulic Fluid Safety

**WARNING**

Possibility of severe injury. Hydraulic fluid is under high pressure and becomes very hot during operation.

- ▶ To avoid injury, obey the safety instructions listed below.

Safety instructions

- Inspect the hydraulic system thoroughly before operating the machine.
- Do not touch hydraulic fluid or hydraulic components while the machine is operating. Wait until the machine is cool.
- Before disconnecting hydraulic fittings or hoses, ensure that all pressure has been bled from the circuit. Set all controls in neutral, turn the engine off, and allow the fluids to cool before loosening hydraulic fittings or attaching test gauges.
- Hydraulic fluid escaping under high pressure may penetrate the skin, causing burns, blindness, or other serious injuries or infections. Contact a physician immediately for treatment if your skin has been penetrated by hydraulic fluid, even if the wound seems minor.
- Fluid leaks from small holes are often practically invisible. Do not use your bare hands to check for leaks. Check for leaks using a piece of cardboard or wood.
- Hydraulic fluid is extremely flammable. Stop the engine immediately if a hydraulic leak is detected.
- After servicing the hydraulics, make sure all components are reconnected to the proper fittings. Failure to do so may result in damage to the machine and/or injury to a person on or near the machine.

4 Operation

4.1 Preparing the Machine for First Use

1. Make sure all loose packaging materials have been removed from the machine.
2. Check the machine and its components for damage. If there is visible damage, do not operate the machine! Contact your Wacker Neuson dealer immediately for assistance.
3. Take inventory of all items included with the machine and verify that all loose components and fasteners are accounted for.
4. Add fluids as needed and applicable, including fuel, engine oil, and battery acid.
5. Move the machine to its operating location.
6. Connect component parts not already attached.

4.2 Grounding the Machine – LTN 6L-V, 6L-VS

Per ISO 8528-8, this machine is designed with an IT Network power system. Do not externally ground this machine.

4.10 Raising the Tower — Vertical Towers

Overview The tower is raised by the action of a hydraulic cylinder **(c)**.
Note: *The tower can be raised without running the engine.*



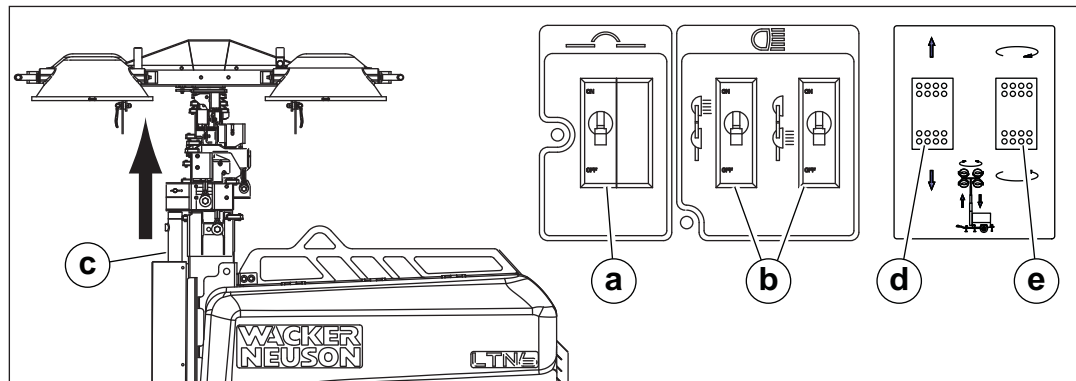
WARNING

Personal injury hazard. Raising or lowering the tower creates situations that, if not avoided, will cause death or serious injury from striking, crushing, pinching, electrocution, etc.

- ▶ Keep the area under and around the lights clear of people and obstructions while raising and lowering the tower.

Procedure Perform the procedure below to raise the tower.

1. If equipped, engage the parking brake on the trailer.
- Note:** *The tower will not raise if the brake is not engaged.*
2. Aim the lights. See topic *Aiming the Lights*.
3. Start the engine. See topic *Starting the Machine*.
4. Turn on the circuit breakers **(a, b)**. See topic *Operating the Lights*.



wc_gr009319

5. Press and hold the upper half of the tower switch **(d)**. Release the switch when the tower reaches the desired height. See topic *Rotating the Mast* for more information.

6.5 Checking the Engine Oil Level

When Daily before starting the engine

- Requirements**
- Engine is stopped and cool to the touch
 - Machine is on a level surface
 - Clean, dry cloth
 - Fresh oil



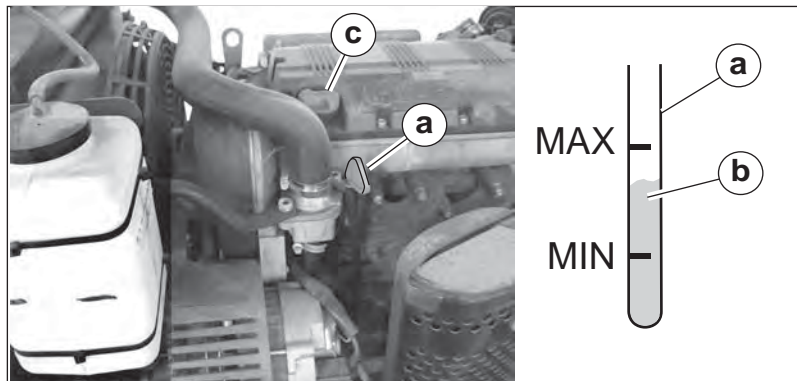
WARNING

Burn hazard. Engine, engine oil, muffler, and exhaust pipes become extremely hot during operation.

? Stop the engine and allow the machine to cool before checking the engine oil level.

Procedure Perform the procedure below to check the engine oil level.

1. Remove the dipstick **(a)** from the engine.



wc_gr009362

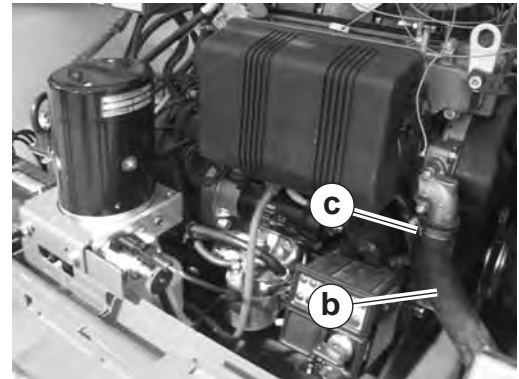
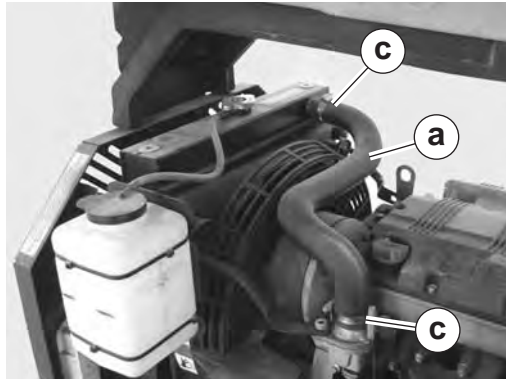
2. Wipe the dipstick clean and re-insert it.
3. Remove the dipstick again and check the oil level **(b)**. The oil level is acceptable if it appears between the “MIN” and “MAX” markings on the dipstick.
4. If the oil level is below the “MIN” marking on the dipstick, do not operate the engine. Add oil as needed through the oil fill **(c)** to reach an acceptable level.

Result The oil level has now been checked.

6.13 Checking Radiator Hoses

When Check the condition of the radiator hoses every 250 hours.

Overview Dry, cracked radiator hoses or loose clamps can cause a coolant leak. A coolant leak will cause the engine to overheat, possibly leading to permanent damage. Regular inspection of the radiator hoses will help to identify coolant leaks. There are two radiator hoses on the LTN. The upper hose **(a)** supplies coolant to the engine. The lower hose **(b)** returns coolant to the radiator.



wc_gr009375

Procedure Perform the procedure below to check the radiator hoses.

1. Inspect each hose for cuts, cracks, abrasions, or bulges. Replace the hose if any of these conditions exist.
2. Squeeze each hose to check the elasticity. A hose in serviceable condition will yield to slight pressure. Replace the hose if it appears to be stiff or brittle.
3. Check the hose clamps **(c)** to make sure that they are tight. Check for coolant leaks at the hose connections. Tighten loose clamps as needed.

Result The radiator hoses have now been checked.

8 Technical Data

8.1 Engine

Engine Power Rating

Net power rating per ISO 3046 IFN. Actual power output may vary due to conditions of specific use.

| Engine | | |
|---------------------------------|--------------|------------------------------------------------------------------------------|
| Make | | Kohler |
| Model | | KDW 1003 |
| Type | | 3-cylinder, 4-cycle, liquid-cooled diesel |
| Max. power rating @ rated speed | kW (hp) | 8.5 (11.4) @ 1500 rpm |
| Operating speed | rpm | 1500 |
| Alternator | V / A / W | 12 / 45 / 540 |
| Battery | V/ccA | 12 / 650 |
| Air cleaner | type | dry-type element |
| Fuel | type | No. 2 diesel |
| Fuel tank capacity | L (gal) | 123 (32.5) |
| Fuel consumption | L (gal) / hr | 1.68 (0.44) |
| Running time | hr | 68 |
| Coolant capacity | L (qt) | 4.7 (5.0) |
| Oil specification | type | AGIP SINT 2000 5W-40 API SJ / CF 4 ACEA A3-96 B3-96 MIL-L-46152 D/E |
| Oil capacity | L (qt) | 2.4 (2.5) |

CLICK HERE TO **DOWNLOAD** THE COMPLETE MANUAL

- Thank you very much for reading the preview of the manual.
- You can download the complete manual from: www.heydownloads.com by clicking the link below



- Please note: If there is no response to CLICKING the link, please download this PDF first and then click on it.

CLICK HERE TO **DOWNLOAD** THE COMPLETE MANUAL