

⚠ Read this handbook thoroughly and understand the whole information contained before trying to operate, inspect and service your machine!

**OPERATING &
MAINTENANCE
INSTRUCTIONS**

**VIBRATING
ROLLER**

MODEL

SV204 Series

SV204D SV204T

SV204TB SV204TF

From SV204D → 1SV65 - 30101
SV204T → 1SV65 - 30101
SV204TB → 1SV65 - 30101
SV204TF → 1SV65 - 30101

CLICK HERE TO **DOWNLOAD** THE COMPLETE MANUAL

- Thank you very much for reading the preview of the manual.
- You can download the complete manual from: www.heydownloads.com by clicking the link below



- Please note: If there is no response to CLICKING the link, please download this PDF first and then click on it.

CLICK HERE TO **DOWNLOAD** THE COMPLETE MANUAL

⚠ WARNING: Negligence of these instructions can lead to accidents.

1 BASIC PRECAUTIONS FOR SAFETY

■ Wear protective clothing appropriate to work

- Wear clothing, safety shoes and hard hat to suit your work.
- Do not wear clothing and accessories that tend to get caught in the controls or protruded portions of the machine. Do not wear oily clothing.
- Depending on the type of job, wear gloves, earplugs safety goggles or a mask.



■ Know the work area in advance

- Know the terrain, geology and conditions of the road surface at the worksite. Start working after securing safety such as stationing a guardsman or putting up barriers where there is a risk of falling of the machine or collapse of shoulder.

■ The operator must make prior checks when moving the machine to a hazardous area under unusual conditions

■ Provide against an accident

- Decide in advance the means of communication in an emergency. Know the location and use of an extinguisher and first-aid kit.

■ Realize the capability of the machine

- Thoroughly understand the performance of your machine and correctly operate the machine to meet the requirements of the job site. Operating the machine beyond its capabilities may lead to an accident. Use your machine within its capability.

■ The machines not equipped with ROPS must not be operated on the slope or unsafe ground

■ The machines not equipped with CABIN must not be operated in the bad weather or a harmful contaminated zone

⚠ WARNING: Negligence of these instructions can lead to accidents.

1 BASIC PRECAUTIONS FOR SAFETY

1.8 Handling the Battery

■ When handling the battery

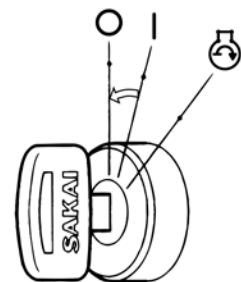
- Battery electrolyte contains sulphuric acid. It will destroy clothing and skin. If it touches your clothing or skin, flush with large quantities of water.
- In case of eye contact, flush with clean water and get medical help.
- If swallowed, drink large amount of water, milk, beaten egg or vegetable oil, and get medical help.
- Wear safety goggles when handling the battery. Wear safety goggles, full face shield, rubber gloves and rubber apron when adding fluids to the battery.
- Keep cigarettes and flames away, and avoid recharging the battery in poorly ventilated places when there is a danger of generating sparks.



⚠ WARNING

Battery posts, terminals, and related accessories contain lead and lead compounds, chemicals known to the State of California to cause cancer and reproductive harm. Wash hand after handling.

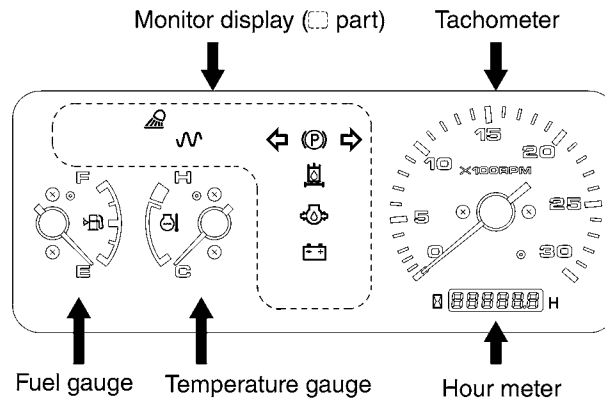
- Inspect or handle the battery with the engine stopped and the starter switch in the \bigcirc position.
- Keep metallic items such as tools away from the battery terminals.
- Tangled terminals may generate sparks due to improper connections, resulting in the danger of explosions. Make sure terminals are connected firmly.
- The battery is for starting the engine and operating electrical equipment on the machine. Do not use it for any other purpose.
- Do not charge battery when the top surfaces of the liquids are at the LOWER level (the minimum liquid level) or below. Not only the internal parts of the battery are degraded and the battery lifetime are shortened but also it can cause explosions if you continue on using the battery when the top surfaces of the liquids are at the LOWER level or below. Immediately supply water until the water level is between the UPPER and LOWER levels.



2.1.2 Gauges, indicator lamps and warning lamps

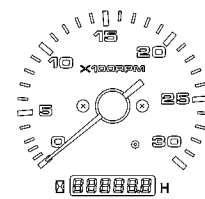
For safe execution of your job, fully understand the role and function of the systems involved.

Combination meter



Tachometer

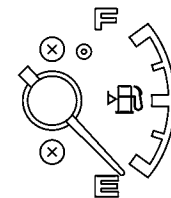
Indicates the engine RPM. The hour meter shows total operating hours. The service interval recommendation in this manual should be based upon the hour meter readings.



Tachometer / Hour meter

Temperature gauge

Indicates the coolant temperature. Zone close to symbol H indicates overheating. In case of overheating, run the engine at idling for about ten minutes before shutting it down. Then determine the cause.

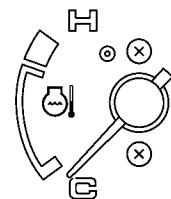


Fuel gauge

Fuel gauge

Indicates the fuel level in the tank.

- E: The tank is empty.
- F: The tank is full.



Temperature gauge

Replenish fuel appropriately before the fuel runs down.

CAUTION

Be sure to use fuel recommended by SAKAI (refer to page 84).

Automatic regeneration

If the coolant temperature and exhaust temperature are at a specified level when the auto regeneration lamp (green) turns on, the PM accumulated in the DPF will automatically be burned (regenerated). If even one of the conditions strays from the specified level during automatic regeneration, it will stop. Furthermore, the machine can be driven as usual during automatic regeneration.

Burning (regenerating) will stop when the auto regeneration lamp (green) turns off.

* Automatic regenerating cannot be carried out when the auto regeneration lamp (green) is flashing.

Manual regeneration

The PM accumulated in the DPF can be burned (regenerated) by following the procedures outlined below, while the parked regeneration request lamp (amber) is flashing.

Failure to carry out manual regeneration may lead to breakdowns.

Follow the procedures below to carry out manual regeneration:

- 1) Move the machine to safe location.
- 2) Shift F-N-R lever into neutral.
- 3) Push on parking brake switch.
- 4) Keep engine rpm at idle.
- 5) Push on parked regeneration switch.

The parked regeneration request lamp (amber) will flash then turn on, after which the engine will automatically rev up and manual regeneration will begin. Manual regeneration will finish when the engine returns to idling and the parked regeneration request lamp (amber) turns off. Manual regeneration will stop if the parking brake switch, F-N-R lever, throttle lever, or accelerator pedal are operated during regeneration.

CAUTION

- **When stopping the machine during automatic regeneration, keep the steering wheel straight. After stopping, do not turn the steering until the automatic regeneration has been completed.**
- **Keep the steering wheel straight while you carry out manual regeneration. Do not turn the steering wheel until the manual regeneration has been completed.**
- **After burning (regeneration), do not turn the engine off immediately. Leave the throttle lever in the idling position for around 5 minutes, let the engine idle, and gradually let it cool. Stopping the engine suddenly without letting it cool may shorten the life span of engine parts.**
- **Continuing to drive the machine without carrying out manual regeneration, while the parked regeneration request lamp (amber) is flashing, will turn on the engine warning lamp, and the engine output will be limited. Carry out manual regeneration immediately.**

2.3.4 Traveling

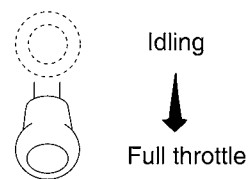
⚠ WARNING

- When starting, operate the horn after securing the safety around the machine.
- On a steep slope, run the machine at low speed.
- Be sure to wear the seatbelt during operation.

⚠ CAUTION

While travelling, do not turn the starter switch O .

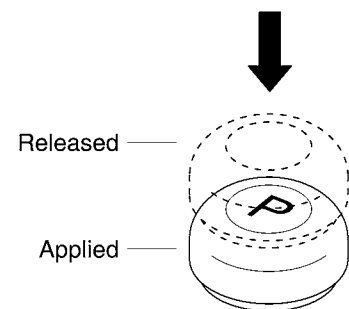
- 1) Speed up the engine by pulling the throttle lever towards you.



- 2) Press down the parking brake switch button to release the brake. Check that indicator lamp (P) on the monitor display goes off.

⚠ CAUTION

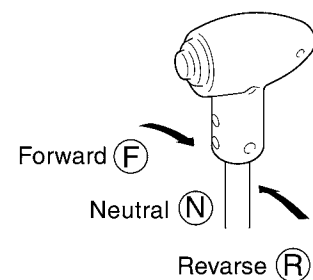
Never pull the switch.



- 3) Move the F-N-R lever in the direction to travel, and the machine will begin traveling.

⚠ CAUTION

Avoid abrupt operation of the F-N-R lever.



NOTE: The travel speed can be controlled by the throttle lever and F-N-R lever.

⚠ WARNING

Pay extreme attention to the area behind the machine when backing, since the space just behind it tends to be a blind spot.

2.11.3 Battery

⚠ WARNING

- The battery contains diluted sulfuric acid, which will dissolve clothes and skin. Should you get battery fluid on your clothes or skin, wash it off immediately with copious quantities of clean water.
- If you get it in your eyes, rinse them straight away with clean water and immediately seek the help of a doctor.
- If you accidentally ingest it, drink copious quantities of water and immediately seek the help of a doctor.
- Always wear safety glasses when handling the battery.
- The battery generates hydrogen gas, so there is a danger of explosions. Avoid recharging the battery, keep cigarettes and flames away, etc., in poorly ventilated places when there is a danger of generating sparks.
- The inspection and handling of batteries should be carried out with the engine turned off and the starter switch in the O position.
- Be careful not to accidentally connect the two battery terminals with tools or other metallic objects.
- Tangled terminals may generate sparks due to improper connections, resulting in the danger of explosions. Make sure terminals are connected firmly.
- The battery is for starting the engine and operating electrical equipment on the machine. Do not use it for any other purpose.

IMPORTANT

The battery is maintenance free at the time of delivery.

When the temperature decreases, the battery capacity will lower, possibly freezing the electrolyte.

The battery should be maintained in a good state at all times, with care taken to keep it warm in preparation for use the next morning.

Hydrometer atop the battery permits confirmation of the condition of the battery.

Green ···· Satisfactory (Good)

Black····· Charging is necessary (Charging required)

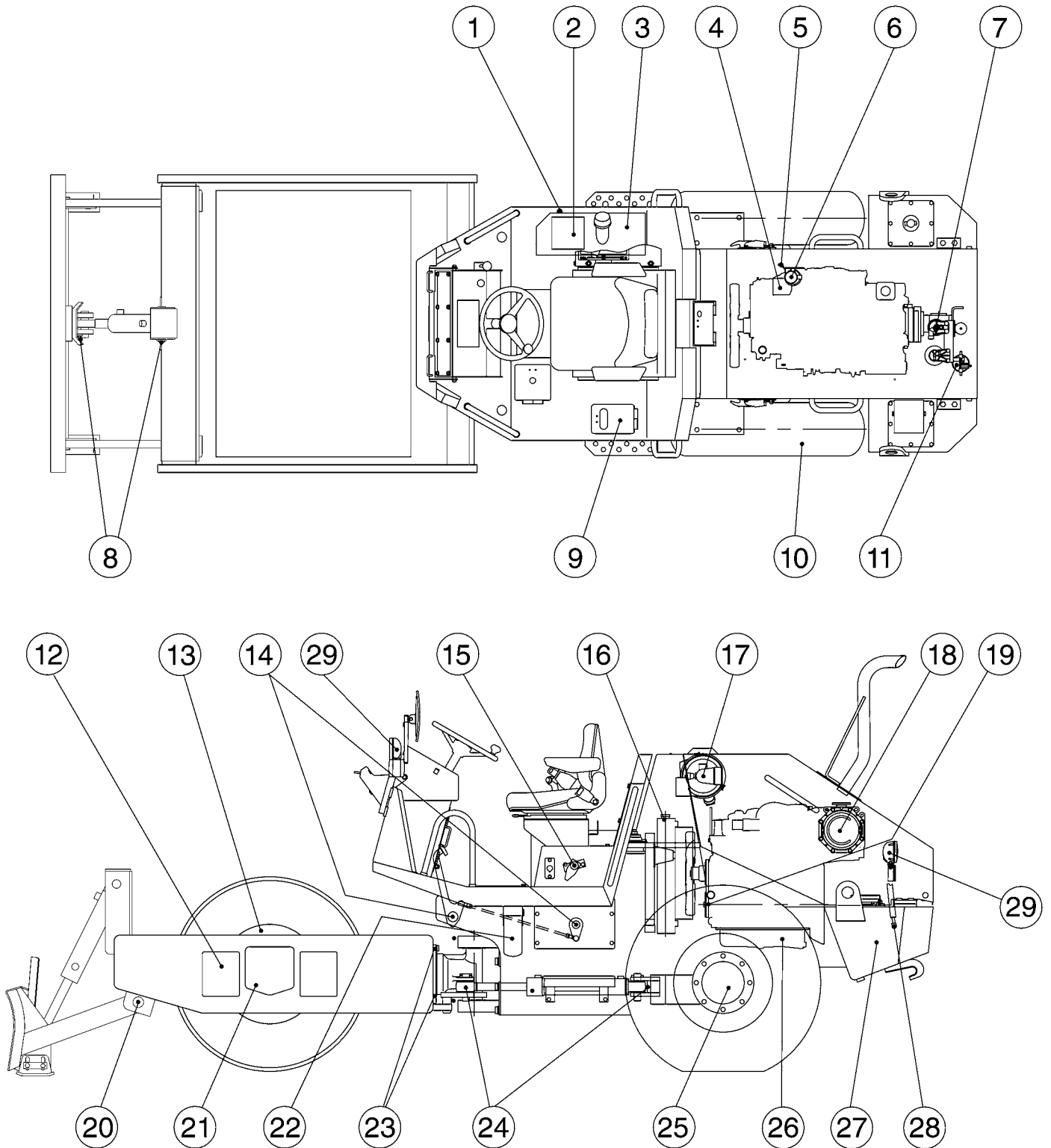
Red······ Replacement is necessary (Electrolyte insufficient)

Please refer to [3 PERIODIC MAINTENANCE] Battery (P.69) for inspection and maintenance of battery.

⚠ CAUTION

The power-supply voltage of this machine is 12V.

(2) SV204TB

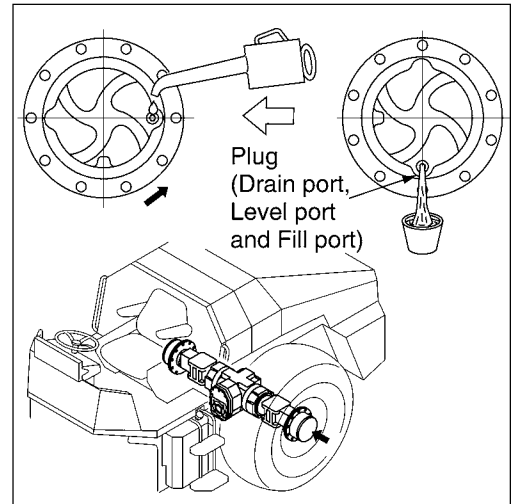


25 Final drive

- 1) Turn the wheel until the drain / level / filler plug of the final reduction gear come to the lowest position.
Remove the drain / level / filler plug to discharge the oil.
- 2) Turn the wheel until the drain / level / filler port come to a position on the side.
- 3) Fill with oil until the drain / level / filler port start to overflow.
- 4) When filling is complete, attach the drain / level / filler plug.

CAUTION

Be sure to use gear oil recommended by SAKAI (refer to page 84).

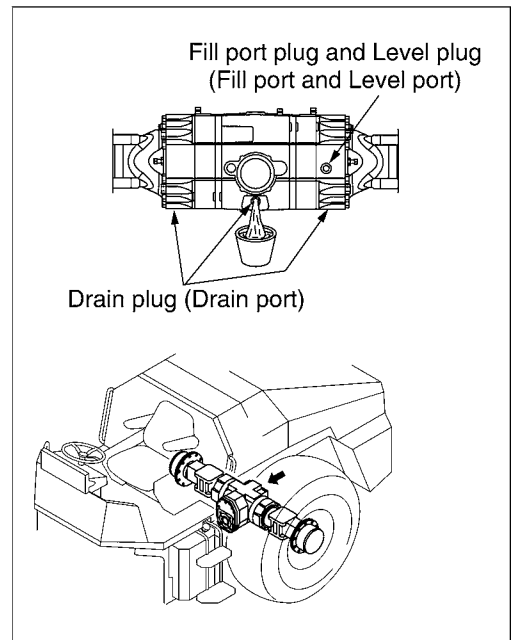


25 Differential case

- 1) Drain oil by removing the drain plug, filler plug and level plug.
- 2) Refit the drain plug.
- 3) Fill oil through the fill port till it overflows from the level port.
- 4) Refit the removed plug, filler plug and level plug.

CAUTION

Be sure to use gear oil recommended by SAKAI (refer to page 84).



(4) Recommended lubricants

Lubricant Oil company	Engine oil API – CJ4	Gear oil API GL 5	Hydraulic oil ISO-VG 46	Grease (NLGI – 2)
CHEVRON	DELO 400 LE	RPM Universal Gear Lubricants	Rando HDZ 46	Multifak EP 2
BP	—	BP Energear HYPO – U	Bartran HV 46	BP Energear LS – EP 2
CASTROL	Tection Extra	EXP Gear OILS	Castrol Hyspin AWH 46	Castrol Spheerol ELP 2
EXXON MOBIL	Mobil Delvac 1 ESP	Mobilube HD	Mobil DTE 10 Excel 46	Mobilux EP 2
SHELL	Shell Rimula R4 L	Shell Spirax S2 A 90	Shell Tellus S2V 46	Shell Alvania Greases EP 2

- CAUTION:**
- 1) Fill the fluid reservoirs with the filters installed.
 - 2) Use recommended fuels and lubricants only.
 - 3) Use the hydraulic oils which specifications are as clean as ISO4406 18/13 or above.

CLICK HERE TO **DOWNLOAD** THE COMPLETE MANUAL

- Thank you very much for reading the preview of the manual.
- You can download the complete manual from: www.heydownloads.com by clicking the link below



- Please note: If there is no response to CLICKING the link, please download this PDF first and then click on it.

CLICK HERE TO **DOWNLOAD** THE COMPLETE MANUAL