

# Operator Manual

HP  
73.8

# MF2635

TRACTOR

Models: 2635 2WD / 4WD



VISION INNOVATION LEADERSHIP QUALITY RELIABILITY SUPPORT PRIDE COMMITMENT



MASSEY FERGUSON

CLICK HERE TO **DOWNLOAD** THE COMPLETE MANUAL

- Thank you very much for reading the preview of the manual.
- You can download the complete manual from: [www.heydownloads.com](http://www.heydownloads.com) by clicking the link below



- Please note: If there is no response to CLICKING the link, please download this PDF first and then click on it.

CLICK HERE TO **DOWNLOAD** THE COMPLETE MANUAL

## SPECIFICATION OF TRACTOR UNIT

### 1. ENGINE

Name of Brand with Model	...	Simpsons TSJ436E, Turbo charged, direct injection diesel with PCV (Compliance to US Tier IV Interim norms)
Country of Origin	...	India
No. of Cylinders	...	4
Fuel System	...	Direct, BOSCH rotary mechanical governor
Fuel Filters	...	Twin type (spin on) - Inline Canister type
Engine Ps (ISO14396)	...	74.8 Ps @ 2200 Erpm
On PTO	...	62 Ps @ 2200 Erpm
On independent PTO	...	60 Ps @ 2200 Erpm
Displacement	...	0.95 gal (3.6 L)
Bore	...	3.74 inch (95 mm)
Stroke	...	5 inch (127 mm)
Compression Ratio	...	18.3 : 1
Air cleaner System	...	Dry type air cleaner with primary and secondary filter element
Exhaust	...	Vertical exhaust
Engine Cooling	...	Pressurized water cooling
Throttle	...	Hand and foot throttle
Aided Start	...	5° F (–15°C)
Engine Oil Drain Period	...	250 hrs

### 2a. CLUTCH

Type	...	Dual dry
Diameter	...	12 inch (305 mm) & 10 inch (254 mm)
Method of Operation	...	Manual with pendant pedal type operation

### 2b. SPLIT TORQUE CLUTCH

Type	...	Single dry
Diameter	...	12 inch (305 mm)
Method of Operation	...	Manual with pendant pedal type operation

### 3a. TRANSMISSION

Transmission Type	...	Full Sliding mesh with high / low epicyclic unit
No. of Speed	...	8 Forward + 2 Reverse
Gear Shift	...	Manual, Center Shift

### 3b. TRANSMISSION

Transmission Type	...	Full Synchronesh with high / low epicyclic unit
No. of Speed	...	8 Forward + 8 Reverse

### Observe the Following

- DO NOT allow children or unqualified persons to operate your tractor. Keep others away from your area of work.
- Securely fasten your seat belt.
- Where possible, avoid operating the tractor near ditches, embankments and holes. Reduce speed when turning, crossing slopes, and on rough, slippery, or muddy surfaces.
- Stay off slopes too steep for safe operation.
- Watch where you are going, especially at row ends, on roads, and around trees.
- DO NOT permit others to ride on the tractor or the implement unless an approved instructor seat and seat belt are used.
- Instructor seat is only intended for short periods of use.
- No children are allowed in the instructor seat.
- Hitch only to the drawbar and recommended hitch points, and never above the center line of the rear axle. Never hook a tow chain, cable or strap to the upper 3-point hitch connection.
- Operate the tractor smoothly - no jerky turns, starts or stops. When the tractor is stopped, apply the parking brake securely. Lower the implement and remove the key.
- DO NOT modify or remove any part of the equipment and DO NOT use attachments unless they are properly matched to your tractor.

Keep others away from your work area. **DO NOT** allow anyone to stand or pass under a raised implement.

- **DO NOT** lift objects that can not be contained in the bucket, get the appropriate attachment.
- When using a loader, avoid sudden stops, starts, turns, or change of direction. Keep loads close to the ground when transporting.
- **DO NOT** stand (or allow anyone else to stand) in front of, under, or behind loaded or loading equipment. **DO NOT** drive a tractor up to someone standing in front of a fixed object.
- Keep others away from universal joints, hitches, drawbar, lift arms, PTO drives, cylinders, belts, pulleys, and other moving parts. Keep all shields and guards in place.



**WARNING: DO NOT stand, or allow anyone else to stand, between the tractor and implement unless the engine is turned off, the parking brake is engaged, the transmission is in neutral, the key is removed, and all attachments or implements are lowered to the ground.**

### Risk of Overturning

In the event of an overturn, hold the steering wheel firmly and keep your seatbelt fastened. **DO NOT** attempt to leave the seat until the tractor has come to rest.

#### To Avoid Side Overturns

- Set the wheel track at the widest setting suitable for the job being done.
- Lock the brake pedals together before driving at transport speeds.
- Reduce speed to match operating conditions. If the tractor is equipped with a front-end loader, carry the bucket and load as low as possible.
- Make wide slow turns at reduced speed. Do not let your tractor bounce. You may lose steering control.

- Do not pull a load too heavy for your tractor. It could run away on the down slope or the tractor could jack-knife around a towed load.
- Do not brake suddenly. Apply brakes smoothly and gradually.
- When going down a slope, use the throttle to slow the tractor engine and use the same gear range you would use to go up the slope. Shift into gear before you start downhill.
- Engage four-wheel drive (if equipped), this will give four wheel braking.



**WARNING: DO NOT disengage the clutch or attempt to shift gear after you have started downhill.**



Fig. 17



Fig. 18

**SAFETY SIGN**

**DESCRIPTION**

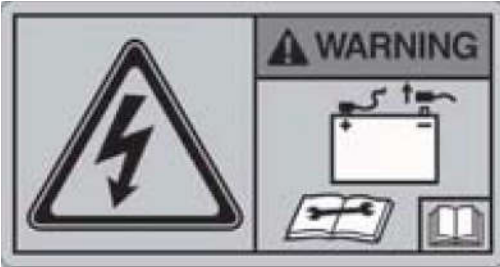


Fig. 27 i

**WARNING:**

Electric shock hazard-risk of personal injury and component damage. Remove negative cables from batteries before removing starter solenoid cover and before servicing electrical system.



Fig. 27 j

**DANGER:**

Runaway machine and runover hazards. Start only from seat with transmission and PTO in neutral. DO NOT short across starter terminals to start engine.



Fig. 27 k

**WARNING:**

Runaway machine and run over hazard. Transmission may not hold the tractor in place even if it is in gear. Stop the engine, remove key and apply parking brake before leaving the operators seat.

**PARKING BRAKE LEVER (Fig. 46)**

The parking brake assembly is mounted on left-hand side fender.

The parking brake acts on the tractor rear wheels. To engage the brake, lock both pedals together, press the brake pedals down fully and pull the hand lever up. To release the parking brake, press the foot brake pedals down fully and then press the button on the end of the lever and push the lever down.



Fig. 46

**POWER TAKE-OFF (LPTO/IPTO) CONTROL LEVER (Fig. 47)**

**A. Live PTO**

To engage the live power take-off, depress the clutch pedal fully down and move the lever Forward.

To disengage the drive, depress the clutch pedal fully down and move the lever rearward.

**B. Independent PTO**

This system does not require the clutch pedal to be depressed. Only decrease the engine speed, move the lever forward to engage the drive and move rearward to disengage the drive.



Fig. 47

**HYDRAULIC CONTROL QUADRANT (Fig. 48)**

These hydraulic controls govern the raising and lowering of implements attached to the three-point linkage by the tractor. For complete instructions on operating the hydraulic lift system, refer to hydraulic lift system of manual.

- A. Position control lever
- B. Draft control lever
- C. Stop knob draft control quadrant
- D. Stop knob position control quadrant

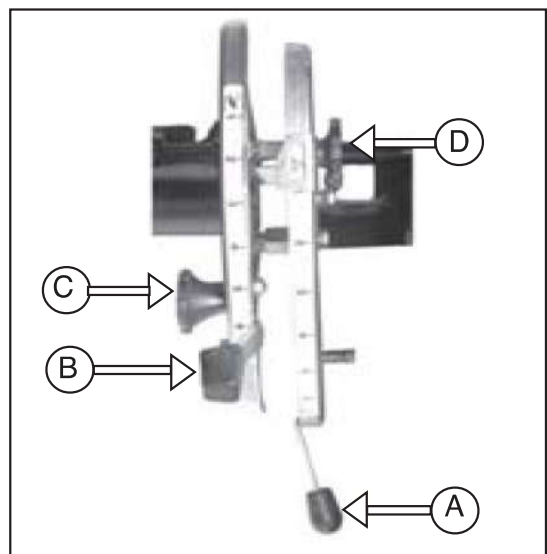


Fig. 48

CLICK HERE TO **DOWNLOAD** THE COMPLETE MANUAL

- Thank you very much for reading the preview of the manual.
- You can download the complete manual from: [www.heydownloads.com](http://www.heydownloads.com) by clicking the link below


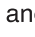


- Please note: If there is no response to CLICKING the link, please download this PDF first and then click on it.

CLICK HERE TO **DOWNLOAD** THE COMPLETE MANUAL

## RESPONSE QUADRANT (Fig. 59)

The response quadrant is positioned on the right-hand side cover of the center housing, which incorporates the transmission oil level dipstick.

The quadrant is marked fast(  ) and slow(  ) with an arrow on the lever knob to indicate the position. When the arrow is in the fast position, an implement will drop fast in work and conversely in the slow position, will drop slowly in work.

Therefore, when ploughing, for example, over undulating/rough ground, the plough will follow the ground contours more accurately with the response lever towards the fast position.

The normal working position for the response lever should be just on the slow side of the center position.



Fig. 59

## 8. MAINTENANCE AND ADJUSTMENTS

### MAINTENANCE CHART

SERVICE INTERVAL	ITEM	C H E C K	C L E A N	L U B E	C H A N G E	A D J U S T	T O P U P
DAILY OR 10 HOURS	Tractor		•				
	Air Cleaner ejector valve squeezing		•				
	Engine Oil level	•					•
	Radiator Coolant level no loss tank	•					•
	Battery		•				
	Front Axle Spindle Housing			•			
	Brake Pedal			•			
	Clutch Pedal			•			
	Turn Buckle			•			
	Tire Pressure	•				•	
	Front & Rear wheel bolt/nut torque	•				•	
EVERY 50 HOURS	Transmission and Hydraulic oil level	•					•
	Fan Belt Tension	•					
	Tightness of Hardware	•				•	
	Hydrostatic Steering Oil	•					•
EVERY 100 HOURS	Leak at Transmission	•					
	Leak at Rear axle Housing joints	•					
	Primary & Secondary fuel filter	•					
	Clutch Pedal	•				•	
EVERY 200 HOURS	Effective Braking and free-play	•				•	
	4WD front axle oil	•					•
	Radiator Fins		•				
EVERY 250 HOURS	Air cleaner element		•				
	Engine oil & coolant connections	•				•	
	Engine Oil and filter				•		

**PROCEDURE FOR CHANGING ENGINE OIL FILTER (Fig.94)**

1. Place a pan beneath the filter to retain spilled oil.
2. Remove the canister oil filter.
3. Clean the filter head and threaded adaptor.
4. Smear clean engine oil on the sealing ring.
5. Fill the new canister with clean engine oil. Screw the canister on to the filter head until the seal just touches the head and then tighten by hand.
6. Run the engine for few minutes and check for any leakages. Recheck the oil level and top up, if necessary.

**IMPORTANT :** *Close properly the oil dipstick and oil filler cap after checking or filling.*



Fig. 94

### 4WD LUBRICATION AND GREASING

#### Periodical Checks :

In the 4WD front axle, lubricant should be maintained up to the level of plug (1 & 4 in Fig. 113). If not, top up with recommended grade of oil.

Low oil level could be an indication of a leak and should be repaired in order to prevent damage to internal mechanical parts.

Loosen and remove the drain plug (2 in Fig. 113) for oil draining.

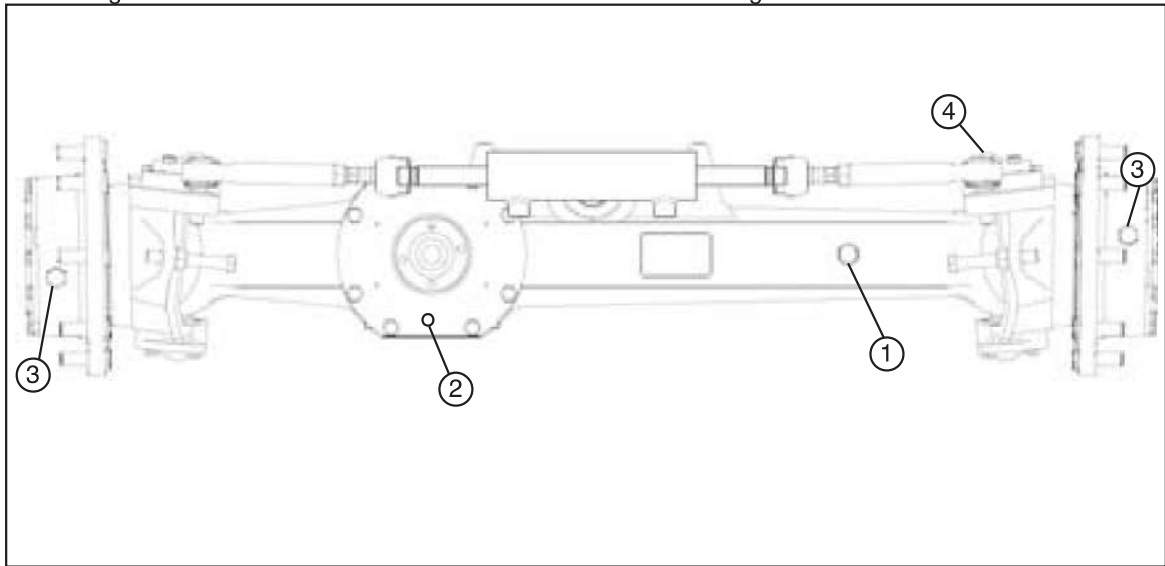


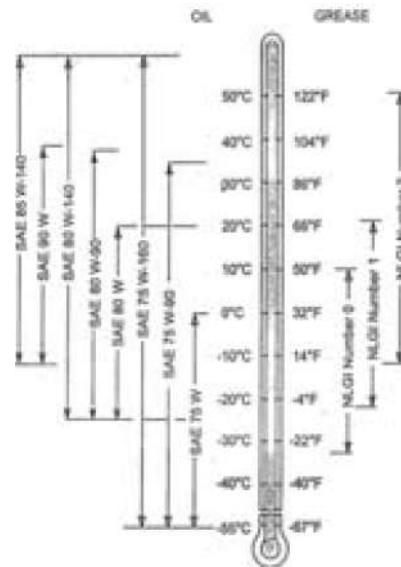
Fig. 113

- (1) Differential oil filling and level plug, (2) Differential oil drain,
- (3) Epicyclic reduction oil fill / Drain and level, (4) Greasing point.

#### PERIODIC LUBRICATION TABLE

OIL CHANGE	<i>First Time 150-200 Hrs</i>	<i>Seasonally or every 1000 Operating hrs whichever comes first</i>
LUBRICATION WORKS	—	Monthly
CHECK AND ADJUST OIL LEVEL	<i>First Time 150 - 200 Hrs</i>	Monthly
CLEAN MAGNETIC OIL DRAIN PLUG	First Time 150 - 200 Hrs	Every Oil Change
CLEAN OIL BREATHER	—	Monthly
GREASING	<i>First Time 150 - 200 Hrs</i>	Monthly

#### LUBRICATION/GREASING GRADES AND APPLICATION RANGE



Remarks : {  = operation to be performed by vehicle's manufacturer authorized personnel only  
 = operation to be performed by trained personnel only

**ALTERNATOR (Fig. 132 & 133)**

*Check the fan and alternator belt tension every 50 hours*

The correct total belt deflection is 3/8 inch (10 mm) when depressed by hand midway between the fan pulley and the crankshaft pulley.

A newly installed belt is likely to stretch after a few hours of running and may require re-adjustment.

The correct total belt deflection of 3/8 inch (10 mm) is to be maintained when depressed by hand midway between fan pulley and crankshaft pulley. To adjust the belt, remove the guard, slacken the alternator securing bolts and reposition the alternator as required. Retighten the bolts securely and reinstall the guard (Fig. 133)

Have your dealer check the alternator every 1000 hours or yearly.

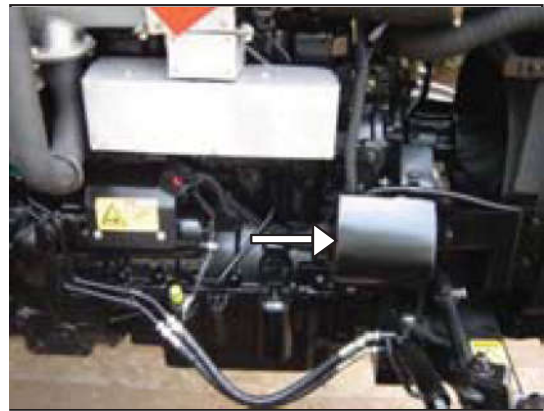
**IMPORTANT:** *The alternator wiring must be disconnected if arc welding is to be carried out on the tractor or an implement attached to the tractor. Do not disconnect or reconnect the battery leads with the engine running.*

**HEADLIGHT ADJUSTMENT**

Adjustment of the headlights is accomplished by adjusting the three screws mounting each light. This is achieved by tightening or slackening the three mounting screws on each head light as required.

**HEADLIGHT BEAM SETTING (Fig. 134)**

1. Position the tractor facing a wall or screen 7.5 m (25 ft) away, distance (A).
2. Draw a horizontal line on the wall or screen (1) the same as the center height of the headlights from the ground (B).
3. Draw two vertical lines (2), the same as the horizontal center to center distance between the headlights (C), 16.14 inch (410mm).
4. Draw a second horizontal line (3) at a distance (D) below and parallel to line (1). Distance (D) is calculated by multiplying distance (B) by 0.1; for example, headlight height 44.5 inch (1130 mm) x 0.1 = 4.5 inch (113 mm).
5. Adjust each headlight, on main beam, individually by covering the opposite one and aligning the upper edge of the illuminated zone to line (3).



Guard covering Alternator  
Fig. 132

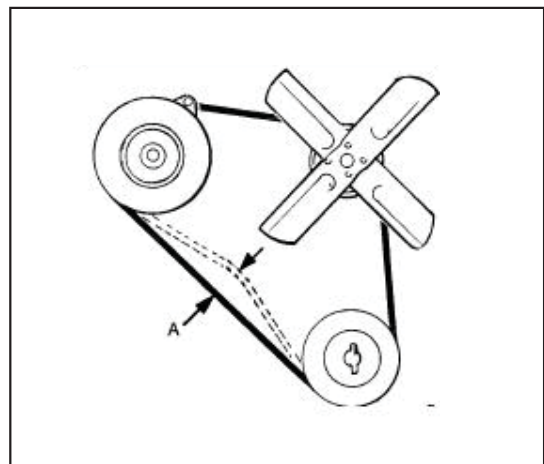


Fig. 133

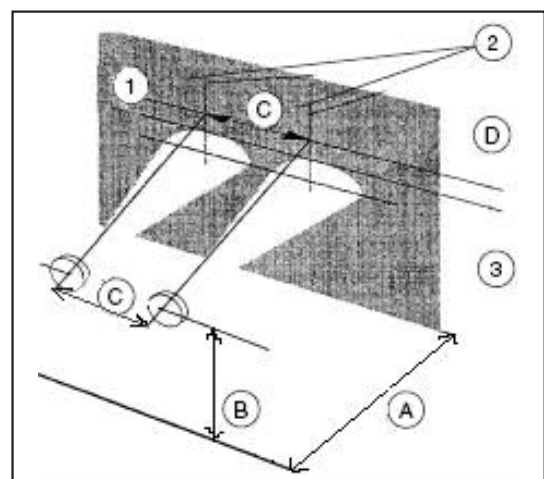
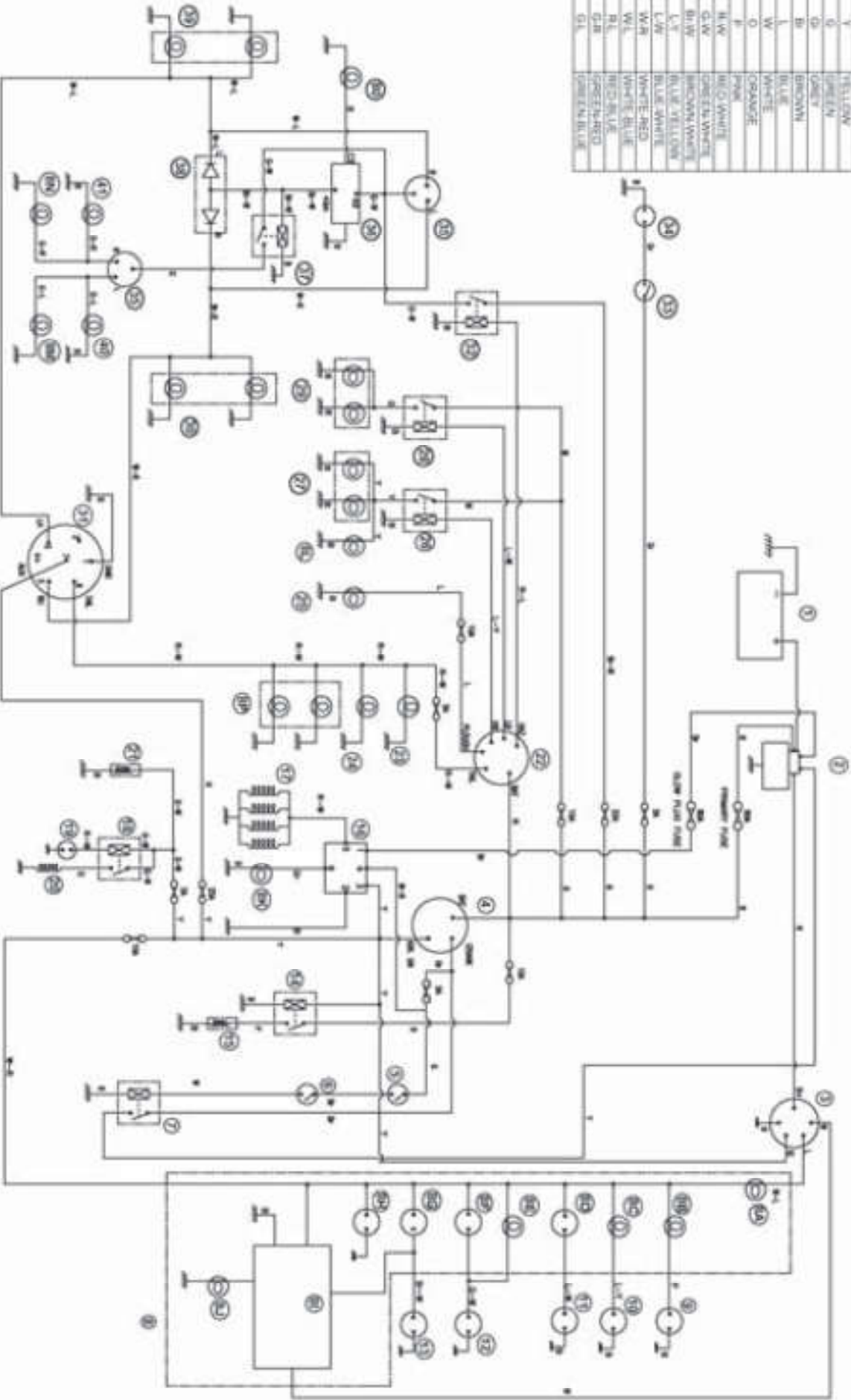


Fig.134

ELECTRICAL CIRCUIT FOR MF 2035

COLOUR CODE DETAILS

COLOUR	CODE	COLOUR NAME
B	REG	BLACK
Y	REG	YELLOW
G	REG	GREEN
OR	REG	ORANGE
BR	REG	BROWN
L	REG	BLUE
W	REG	WHITE
O	REG	ORANGE
P	REG	PINK
ALW	REG	ALU WHITE
GLW	REG	GREY WHITE
BLW	REG	BROWN WHITE
L.Y	REG	BLUE YELLOW
L.W	REG	BLUE WHITE
WM	REG	WHITE RED
WL	REG	WHITE BLUE
RL	REG	RED BLUE
GR	REG	GREEN RED
GL	REG	GREEN BLUE



MOCCO

CLICK HERE TO **DOWNLOAD** THE COMPLETE MANUAL

- Thank you very much for reading the preview of the manual.
- You can download the complete manual from: [www.heydownloads.com](http://www.heydownloads.com) by clicking the link below



- Please note: If there is no response to CLICKING the link, please download this PDF first and then click on it.

CLICK HERE TO **DOWNLOAD** THE COMPLETE MANUAL