

LIEBHERR

LICCON job planer

Operating instructions

BAL-No.: 99500-02-02

Pages: 67

Werk-Number	
Date	

The operating manual is part of the crane!

It must always be carried and be ready for use!

**Comply with all traffic regulations and specifications
for crane operation!**

Liebherr-Werk Ehingen GmbH

Postfach 1361

D-89582 Ehingen / Donau

☎: +49 (0) 7391 502-0

Fax: +49 (0) 7391 502-3399

✉: info.lwe@liebherr.com

www.liebherr.com

CLICK HERE TO **DOWNLOAD** THE COMPLETE MANUAL

- Thank you very much for reading the preview of the manual.
- You can download the complete manual from: www.heydownloads.com by clicking the link below



- Please note: If there is no response to CLICKING the link, please download this PDF first and then click on it.

CLICK HERE TO **DOWNLOAD** THE COMPLETE MANUAL

CODE >XXXX< U124 2E00

LX XXXXX Krannummer: 000000000

n = 26
0
0
3
251
(max)

1.0°
5%
1.0 m
100%

SDEW
49 m

135
t

43
t

yy m

90°

19.7
70.0°

48.4

117.1°
115.6°
114.1°

(min) 0
t 0
(max) --
15.00 m

7 8 9

4 5 6

1 2 3

0 . P

P0 P1 P2

P4

P6

E1 E2

SHIFT

F1

F2

F3

F4

F5

F6

F7

F8

ENTER

A —

7

8

9

4

5

6

1

2

3

0

.

P

P —

P0

P1

P2

P4

P6

P6

P6

P6

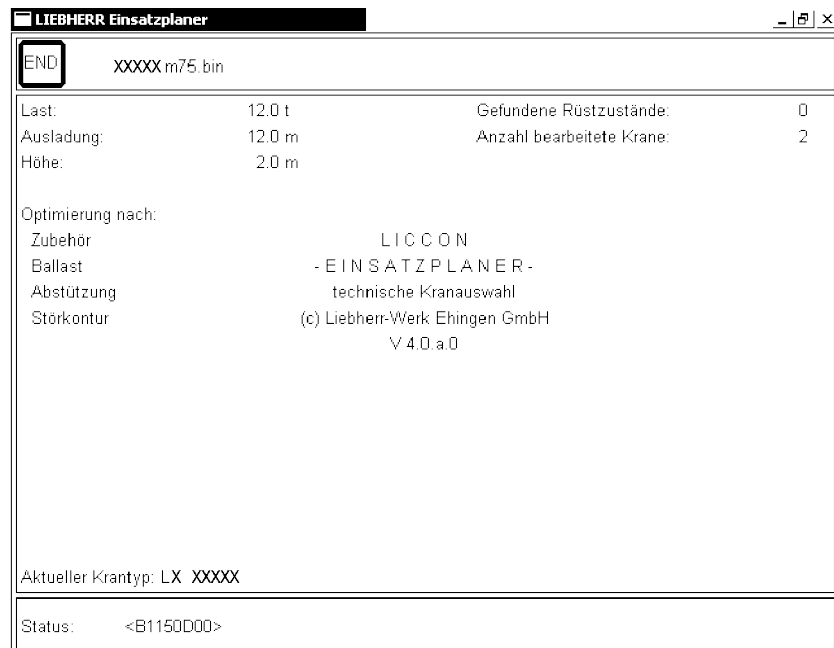
E —

E1

E2

Result: The automatic crane selection is completed.

The crane selection can take some time, depending on the computer power and number of machines. The following status window appears during the automatic selection program:



During the crane selection, a list of all configuration conditions is written for each machine. You can check this list at the end of the program run or print it out. You can check this list at the end of the program run or print it out. It is also available to you at any time in the planer.

- Abort the current crane selection: Click on the END button.

Result: The current crane selection is aborted.

Any cranes found to this point are available in the result list.



Notice!

Start the planer program.

! When you start the planer program directly after the automatic crane selection, then the first crane found for your load case is automatically entered and set to the required position. You can select another configuration condition in the planer program.

- Enter the coordinates of the outline via the keyboard or with the mouse.

Result: When leaving the program, the outline is saved and remains until another outline is entered.



Turn on the measuring mode.

- Click on the icon.

Result: You can turn the measuring mode on and off.

When the measuring mode is turned on, the coordinates, where the mouse pointer is, are faded in on the lower right. The distances can also be measured from the crane view.



Increase / decrease zoom section.

- Click with the left mouse button on the icon.

Result: You can define a new section via two opposite points.

- Click with the right mouse button on the icon.

Result: You can increase or decrease the displayed view by a certain factor.



Move the pan section.

- Click on the icon.

Result: You are moving the current pan section.



Turn the chassis.

- Click on the icon.

Result: You are turning the chassis.



Select the crane.

- Click on the icon.

Result: You get a list of configuration conditions, which were determined at the automatic crane selection.

By clicking one of these lines, the corresponding crane is read into the planer program and is automatically set to the determined position.



Printing the screen.

- Click on the icon.

Result: The current contents of the screen is printed out on the connected printer.



Showing help text.

- Click on the icon.

Result: The help text or the short instructions for the program are issued.

3.2 Operating the LICCON icon bar

In the lower area, there is the bar with LICCON symbols, to each of them is a function key assigned to. These icons show the currently set operating mode. The meaning of the individual icons or function keys F1 – F7 is explained in the “Crane configuration” paragraph.

- see “Crane configuration” paragraph.

3.3 Controlling the operating icon bar

On the right edge of the screen is the operating icon bar, where the operating icons are displayed during crane simulation. Within the icons, the current operating data is shown. The icons depend on the set operating mode and correspond to the icons in the LICCON.

3.3.1 Operating the symbols

- Move the mouse pointer in an icon area.

Result: In most cases, the mouse pointer changes its shape and shows that a function can be carried out at this point.

These functions are listed as follows.

Result: You can change the reeving number "n".

Function key F8: Confirm configuration.



- When the desired configuration is set:
Press function key.

Result: The current setting is taken over.

4.2 Configuring the crane with the LMB code

- Enter the LMB code directly via the alpha-numeric keys (0...9).
- With the mouse, click in the OK field or confirm with F8.

Result: The chart is set and the load chart values are shown.

4.3 Crane configuration with the aid of the operating mode overview



- Click on the icon.

Result: An overview of all charts, which are programmed for this crane is shown.

LIEBHERR Einsatzplaner						
END	KNF	KRN	Krannummer: 000000000	Krantyp: LX XXXX		
Hauptausleger	Zubehör	Ballast	Abstützung Zentralbal.	Drehber. B-Wagen	Code	
xxø T 50m B216A315	N 56m	60.0	10.0x9.6	360 ø	1677	↑
xxø T 50m B216A415	N 56m	75.0	10.0x9.6	360 ø	1676	↑
xxø T 50m B216A515	N 56m	90.0	10.0x9.6	360 ø	1675	↑
xxø T 50m B216A715	N 56m	105.0	10.0x9.6	360 ø	1674	↑
xxø T 50m B216A815	N 56m	135.0	10.0x9.6	360 ø	1672	↑
xxø T 50m B216A016	N 56m	165.0	10.0x9.6	360 ø	1670	↑
xxø T 50m B216A116	N 63m	30.0	10.0x9.6	360 ø	1689	↓
xxø T 50m B216A216	N 63m	45.0	10.0x9.6	360 ø	1688	↓
xxø T 50m B216A316	N 63m	60.0	10.0x9.6	360 ø	1687	↓
xxø T 50m B216A416	N 63m	75.0	10.0x9.6	360 ø	1686	↓
xxø T 50m B216A516	N 63m	90.0	10.0x9.6	360 ø	1685	↓
xxø T 50m B216A616	N 63m	105.0	10.0x9.6	360 ø	1684	↓

For paging, all lines, which contain a valid equipment configuration, are highlighted in color.

- Double click on the active line.

Result: The active line is directly taken over into the chart program. This equipment configuration is automatically set and the corresponding chart value is shown.

**Notice!**

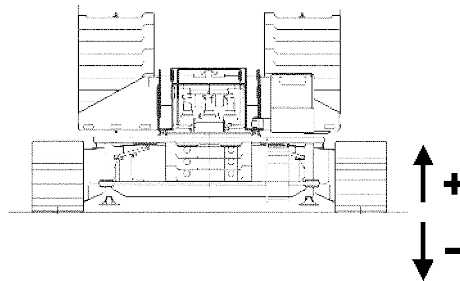
! The incline angles can be entered only for crawler cranes (installed on crawlers and / or support). For tele cranes, the display of the center of gravity is only for informational purposes and is marked with the value 0°.

- With the mouse, click on the corresponding angle display.

Result: The following dialog fields open:

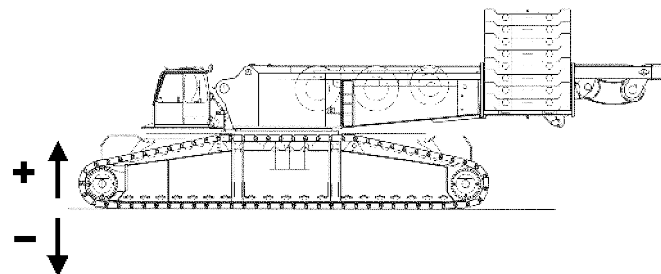
Dialog field input incline angle

The max. adjustable side incline is $\pm 4.5^\circ$



- Adjust side incline.

The max. adjustable length incline is $\pm 8^\circ$



- Adjust length incline.



CLICK HERE TO **DOWNLOAD** THE COMPLETE MANUAL

- Thank you very much for reading the preview of the manual.
- You can download the complete manual from: www.heydownloads.com by clicking the link below



- Please note: If there is no response to CLICKING the link, please download this PDF first and then click on it.

CLICK HERE TO **DOWNLOAD** THE COMPLETE MANUAL