

Timberjack C90 Delimber

CALIFORNIA
Proposition 65 Warning

Diesel engine exhaust and some of its constituents are known to the State of California to cause cancer, birth defects, and other reproductive harm.

If this product contains a gasoline engine:

 **WARNING**

The engine exhaust from this product contains chemicals known to the State of California to cause cancer, birth defects or other reproductive harm.

The State of California requires the above two warnings.

CLICK HERE TO **DOWNLOAD** THE COMPLETE MANUAL

- Thank you very much for reading the preview of the manual.
- You can download the complete manual from: www.heydownloads.com by clicking the link below



- Please note: If there is no response to CLICKING the link, please download this PDF first and then click on it.

CLICK HERE TO **DOWNLOAD** THE COMPLETE MANUAL

Timberjack

11. When preparing to park the machine, ensure that the ground is reasonably level. Position the delimeter superstructure in roading position and install the swing lock. Secure the delimb head and sliding boom as detailed in paragraph 8 above and stop the engine. Position the spring applied brake selector switch in ON position before leaving the cab.

12. After parking the machine and shutting the engine down, switch OFF the master disconnect switch.

13. Adhere strictly to ALL regulations at the worksite pertaining to the operation of this equipment.

Servicing Safety Precautions

1. If the engine is operated in a garage or shed, ensure that sufficient ventilation is available to prevent a build-up of toxic exhaust fumes.

2. Before performing maintenance or repair work on any equipment, consult the manufacturer's instruction manual and follow the recommended procedures.

3. When servicing or repairing the equipment, shut down the engine unless it is required to be running for test or adjustment purposes.

4. Always use the proper tools for the job. Repair or replace any broken or damaged tools including lifting equipment immediately.

5. Keep your head, hands, feet and loose clothing away from power driven parts.

6. Pressure can be maintained in hydraulic circuits long after the power source and pump have been shut down. Lower the hydraulic implements to rest position and relieve all trapped pressures before performing any service work on hydraulic components.

7. When troubleshooting a hydraulic system for leaks, use a piece of cardboard or other material as detector rather than

your hand. Pressurized hydraulic fluid escaping from a faulty component can penetrate the skin and cause serious injury.

8. Do not change the pressure setting of any hydraulic valves unless authorized instruction has been obtained.

9. Ensure that all tire and rim parts are undamaged and correctly assembled before inflation pressures are checked.

10. Unauthorized personnel must not perform maintenance work to the tires and rims on this vehicle including adjustment of the inflation pressures. Tire inflation and other maintenance must only be carried out by service personnel authorized by the tire manufacturer.

11. Use caution when draining hot fluid from the machine. Splashing hot fluid can cause serious burns.

12. Before initiating any work in the frame hinge area, install a frame lock mechanism between the frames to prevent accidental articulation. Install also the swing lock mechanism between the superstructure and carrier to prevent accidental rotation (swing) of the delimeter superstructure.

Fire Prevention

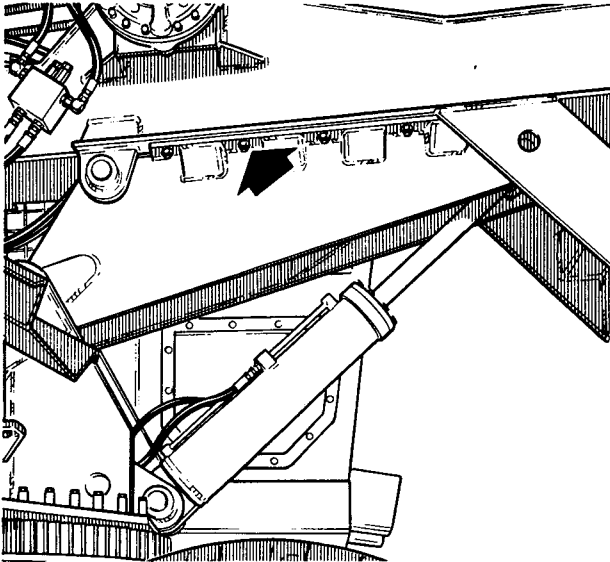
Fire can create severe emergencies where both human life and property can be lost. Even when confined, a fire may cause very expensive damage to your equipment. Fire can strike at any time when the equipped is in use or stopped between work shifts.

When working in a forest environment, it is impossible to prevent combustible debris from collecting in tight corners of the machine. This debris in itself may cause a fire; however, when mixed with fuel, oil or grease in a hot and confined place, the danger of fire is very much increased.

To reduce the chances for a fire to break out, adhere strictly to the following preventive instructions:

Timberjack

and secure the delimb head to the main boom using heavy duty chains or cables.

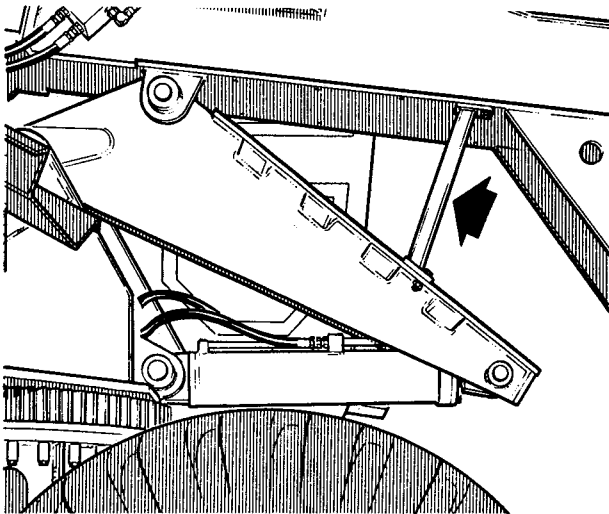


PREPARATION FOR TRANSPORT
FIGURE 2-9.

6450

CAUTION:

THE DELIMBER BOOM AND HEAD MUST BE SECURELY CHAINED OR OTHERWISE FASTENED TO THE MAIN BOOM PRIOR TO TRANSPORT OF THE MACHINE IN ORDER TO PREVENT ACCIDENTAL SLIDE-OUT WHILE IN TRANSIT.



INSTALLATION OF TRANSPORT
SUPPORT BEAM
FIGURE 2-10

6451

WARNING:

HEAVY DUTY LIFTING EQUIPMENT IS REQUIRED TO POSITION THE DELIMBER ON THE TRAILER FOR TRANSPORT. MAKE SURE THE EQUIPMENT HAS SUFFICIENT LIFTING CAPACITY IN ORDER TO AVOID ACCIDENTS.

4. Position the delimber superstructure in roading position and install the turntable swing lock. Drive the delimber into position over the trailer frame so that its wheels straddle the frame evenly. Jack, in turn, each end of the delimber up and install support blocks between the trailer frame and the delimber axles.

NOTE:

The support blocks must be large enough to ensure a minimum clearance of 4 in. (100 mm) between the delimber wheels and the road during transport.

5. Chain the delimber securely to the trailer to prevent inadvertent movements. Chain also the tail end of the main boom to the trailer bed in order to prevent damaging stress on the turntable swing lock during transport.

Delimiting and Tree Handling Functions

General

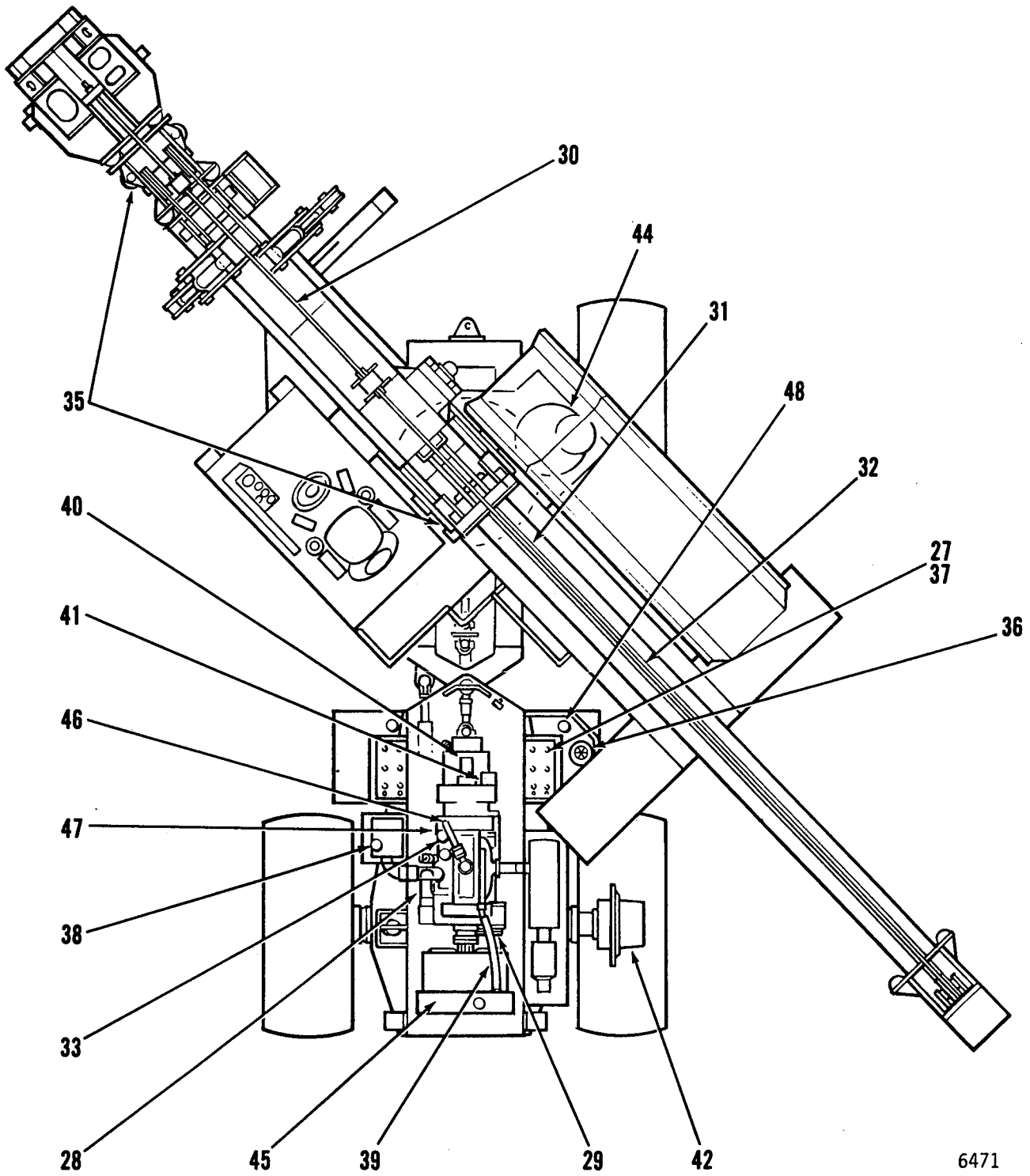
To obtain high production output with the delimber, it is important for the operator to become familiar with the functions of the individual controls as quickly as possible and learn to operate the delimber functions subconsciously, i.e. without thinking about the location and function of each control lever and switch every time it is used.

WARNING:

DO NOT OPERATE THE DELIMBER OR ATTEMPT TO DRIVE THE MACHINE UNLESS SEATED IN THE OPERATOR'S SEAT AND IN FULL CONTROL OF ALL EQUIPMENT FUNCTIONS. FAILURE TO OBSERVE A SAFE OPERATING PRACTICE MAY LEAD TO HAZARDOUS SITUATIONS OR ACCIDENTS.

Timberjack

Maintenance Schedule



6471

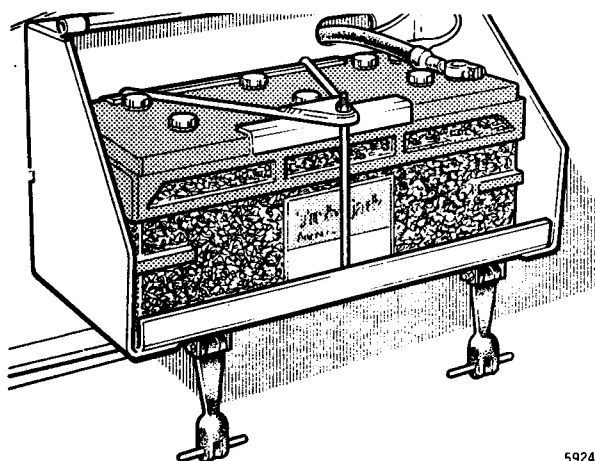
Timberjack

ITEM 27.

Check the battery electrolyte level, ref. figure 3-28. Clean the top of the batteries before removing the caps. Check that the fluid level in each cell is approximately 1/4 inch (6 mm) above the plates. If required, replenish "dry" cells with distilled water. DO NOT overfill, allow enough room for the fluid to expand without flowing over when the battery temperature increases.

NOTE:

The delimeter is equipped with two (2) batteries which both must be checked. The one battery is accessible as shown in figure 3-28 and the other in similar fashion from the opposite side of the machine.



BATTERY ELECTROLYTE CHECK
FIGURE 3-28

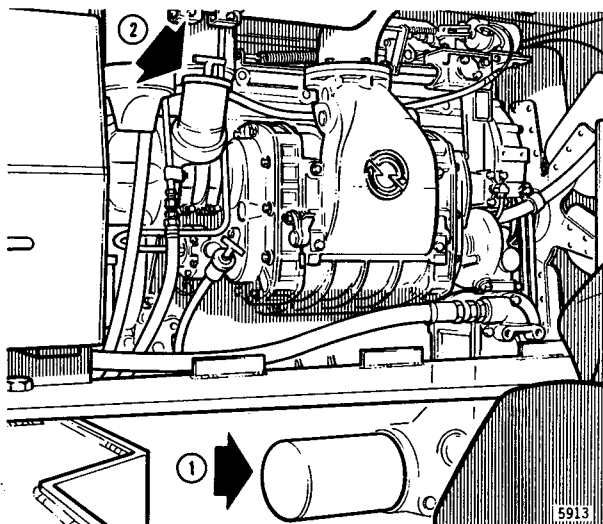
ITEM 28.

Change the engine oil and filter. The oil change should be performed shortly after the engine has been operated while the engine is warm. The lower viscosity of the warm oil speeds up the draining time, and also most foreign particles will remain suspended and drain out with the oil.

Drain the used oil from the engine oil pan and clean the magnetic drain plug. While the oil is draining, remove the oil filter element (1), ref. figure 3-29. Clean the filter base thoroughly using a lint-free cloth.

Install a new filter and gasket. Lubricate the gasket with clean oil before installation and tighten the filter only 2/3 of a turn after gasket contact with filter base.

Make sure the oil pan drain plug is properly installed and refill the engine with fresh oil (2). Refer to table 3-1 for oil type and quantity.



ENGINE OIL AND FILTER CHANGE
FIGURE 3-29

ITEM 29.

Check the engine v-belts, ref. figure 3-30. Replace extensively worn or deteriorated belts. If replacement of one belt in a dual belt set is required, replace both the belts. Each belt set should be matched to within 0.03 in. (0.8 mm) of the specified center distance. Do not replace one belt only, as this may cause premature belt wear due to differences in length.

Check the tension of the fan belts (1) and the alternator belts (2) approximately midway between the respective pulleys. A firm push with the thumb should depress each belt tested approximately 1/2 to 3/4 in. (13 to 20 mm). If a belt tension tester is available, the following values should be observed:

All belts: 40 to 50 lb/belt (180 to 220 N/belt or 18 to 22.5 kg/belt).

It is important that the belts are correctly tensioned. Too tight a belt is destructive

AMBIENT TEMPERATURE	OIL VISCOSITY RECOMMENDATIONS		
	PRIMARY	SECONDARY	THIRD
<p>Fahrenheit Celsius</p>	SAE 40	SAE 30	NONE
	SAE 40 PLUS STARTING AID	SAE 30	NONE
	SAE 40 PLUS STARTING AID	SAE 30 PLUS STARTING AID	SAE 15W-40
	SAE 40 PLUS STARTING AID	SAE 30 PLUS STARTING AID	SAE 15W-40 PLUS STARTING AID
	SAE 15W-40 Multigrade oil is only recommended if the ambient temperature is consistently below 0 Deg. C. (32 Deg. F.).		
The engine oil must conform to the following specifications:			
API Letter Code	Military Specification	SAE Grade	
CB	MIL-L-2104A (Supplement 1)	40 or 30	
CC	MIL-L-2104B	40 or 30	
CD	MIL-L-45199B (Series 3)	40 or 30	
CC/SE	MIL-L-46152	40 or 30	
CD/SC	MIL-L-2104C	40 or 30	
Numerous Combinations of Above	Single Grade, Universal, No MIL-Spec.	40 or 30	
CD/SE	Multigrade, Universal, No MIL-Spec.	15W-40	

GM ENGINE OIL VISCOSITY AND PERFORMANCE
TABLE 3-2

CLICK HERE TO **DOWNLOAD** THE COMPLETE MANUAL

- Thank you very much for reading the preview of the manual.
- You can download the complete manual from: www.heydownloads.com by clicking the link below



- Please note: If there is no response to CLICKING the link, please download this PDF first and then click on it.

CLICK HERE TO **DOWNLOAD** THE COMPLETE MANUAL