

Timberjack 810D Forwarder,

(Serial No. WJ810D0001500-- }

OPERATOR'S MANUAL 810D

OMF066519 Issue 26.3.2004 (ENGLISH)

CALIFORNIA Proposition 65 Warning

Diesel engine exhaust and some of its constituents are known to the State of California to cause cancer, birth defects, and other reproductive harm.

If this product contains a gasoline engine:

WARNING

The engine exhaust from this product contains chemicals known to the State of California to cause cancer, birth defects or other reproductive harm.

The State of California requires the above two warnings.

**Worldwide Construction
And Forestry Division**
Printed in Finland

CLICK HERE TO **DOWNLOAD** THE COMPLETE MANUAL

- Thank you very much for reading the preview of the manual.
- You can download the complete manual from: www.heydownloads.com by clicking the link below



- Please note: If there is no response to CLICKING the link, please download this PDF first and then click on it.

CLICK HERE TO **DOWNLOAD** THE COMPLETE MANUAL

Warranty

Standard warranty clauses

The machine is covered by Timberjack's guarantee in compliance with the standard warranty clauses accepted by the Timberjack group.

The manufacturer will not assume responsibility for the machines delivered should the following conditions be violated:

- The forwarder is exclusively operated and maintained by experienced personnel who have been trained by Timberjack or by a dealer authorized by Timberjack.
- The forwarder must be operated and maintained in accordance with the instructions provided in this manual.
- Only fuels and lubricants specified in this manual are used.
- Only genuine spare parts are used

EL62757,000015D -19-19APR02-1/1

250, 1000 and 2000 Hours Service

The forwarder was checked and test driven before delivery, and it can be put to use immediately. However, to ensure good reliability it is very important to thoroughly service the machine once it has been put to use.

THE WARRANTY GIVEN BY TIMBERJACK WILL BE VALID PROVIDED THAT THE MACHINE IS HANDED OVER FOR MAINTENANCE AT 250, 1000 AND 2000 RUNNING HOURS, THE SERVICE SHOP BEING ONE AUTHORIZED BY TIMBERJACK.

Naturally the validity of warranty requires that during the warranty period all the maintenance procedures have to be performed according to the maintenance intervals detailed in this manual.

EL62757,000015E -19-19APR02-1/1

Handle Starting Fluid Safely

CAUTION: Never use a liquid starting aid, if engine is equipped with the pre-heat device. The use with the pre-heat device will cause an explosion in the intake manifold.

Starting fluid is highly flammable.

Keep all sparks and flame away when using it. Keep starting fluid away from batteries and cables.

To prevent accidental discharge when storing the pressurized can, keep the cap on the container, and store in a cool, protected location.

Do not incinerate or puncture a starting fluid container.



TS1356 -UN-18MAR92

OUTJ003,000068F -19-14MAY01-1/1

Pay Attention to Bystanders

Keep windows clean and the cab floor free from loose articles.

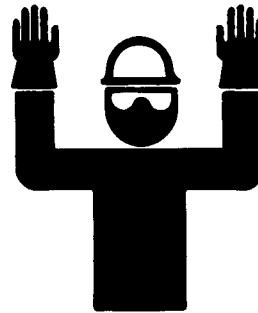
Keep the door closed when driving the machine. Do not operate the machine with any of the safety covers or protective devices removed.

Always keep the reverse warning alarm (if equipped) in working condition.

Use a signal person when moving the machine in congested areas (for example indoor service shop)
Coordinate hand signals before starting the machine.

The machine must not be operated by anyone under the influence of alcohol or drugs.

Avoid using the machine when you are tired or ill, as there is a greater risk of accident. Take sufficient breaks and observe local regulations on working hours.



T6964AD -UN-20DEC88

TX,05,FF3319 -19-08FEB93-1/1

Use Proper Tools

Use appropriate and correct size tools. Makeshift tools and procedures can create safety hazards or cause machine damages.

Illuminate your work area and service points adequately. Secure that portable light has a bulb enclosed by a wire cage. The hot filament of an accidentally broken bulb can cause a risk of fire.

Use power tools only to loosen threaded parts and fasteners. DO NOT use U.S. measurement tools on metric fasteners.

Keep tools clean. Avoid bodily injury caused by slipping wrenches.

Repair or replace worn or damaged tools, before initiating repair work on your machine.

Use only service parts meeting manufacturer's specifications.



TS779 -UN-08NOV89

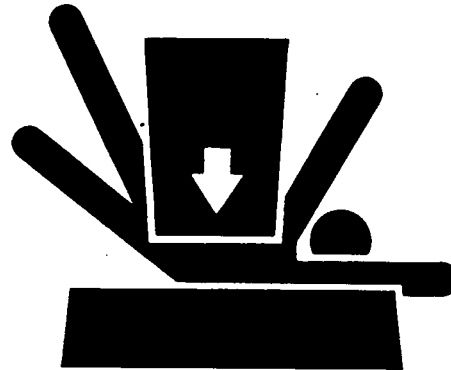
OUTJ003,00005AB -19-09MAY01-1/1

Support Machine Properly

Use proper lifting equipment. Lifting heavy components incorrectly can cause severe injury or machine damage.

Follow recommended procedure for removal and installation of components in the manual. Make sure that jack stands and lifting equipment are in good condition and of adequate capacity.

Do not work under a machine that is supported solely by a jack. If left in a raised position, hydraulically supported devices can settle or leak down.



TS229 -UN-23AUG88

AK12300,000004F -19-28FEB02-1/1

Start Key Positions

P—Vacuum pump (opt. eq.)

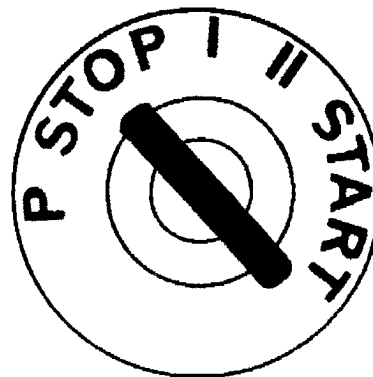
STOP—Engine turn-off

I—Power on

II— Empty

START—Starting.

In positions Start and II the load on the working hydraulic pump is relieved making it easier for the engine to run



T152192 -JUN-05MAR02

EL62757,000016E -19-19APR02-1/1

Signal Lights

1—Turning signal

2—High beam

3—Work spot lights

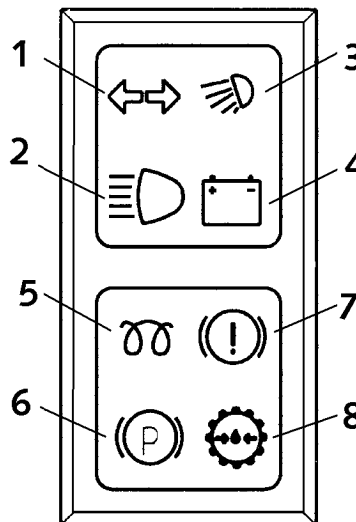
4—Battery charging

5—Glow light

6—Parking brake

7—Brake system charge pressure

8—Supply pressure of driving hydraulics



T164093 -JUN-30JAN03

EL62757,0000170 -19-19APR02-1/1

Alarms

The TMC™ control system is equipped with a condition-monitoring system that greatly facilitates the use and maintenance of the system. The alarms are recorded in the alarm log.

The alarms are registered in ECU but they can be glanced only in TMC.

There are two kind of alarms: active and previous active (see the TMC manual¹ attached).

¹See alarms -section in TMC manual.

Starting and Turning Off the Engine

Before Starting the Engine for the First Time in a Working Day

- Take an overall look at the machine (joints, hoses, etc.).
 - Check the engine oil level.
 - Check the coolant level.
 - Check the hydraulic oil level.
- Turn on the main switch (the switch is located on the left-hand side, under the cab).
- Check the fire extinguishing system. See separate instructions by the manufacturer (optional equipment).
- Check the fuel level.
- Remove the lock pin of the emergency exit.



A—Main switch

EL62757,000018D -19-21APR02-1/1

Minilevers

For the transport minilevers are clamped to the extreme position with rubber loops situated on outer side of control panels.

EL62757,000018B -19-21APR02-1/1

Chains

Ensure that the machine or boom will not move during the transport. The machine must be secured by at least two chains (you can use a ratchet tensioner, for example). It is good to utilize any support provided by, for instance, the fenders of the truck or trailer if the tires of the machine can be positioned against these. The chains secured to the front frame and Rear frame must provide longitudinal support for the machine both fore and aft, as well as lateral support at suitable angles. Make sure that the chains are not twisted after tightening to prevent the tensioners from coming loose during the transport. In addition, when securing the chains make sure that they will not damage the forwarder. Finally, fit clearance lights as stipulated by local laws.

NOTE: When travelling on public roads, all regulatory requirements must be met in full.

EL62757,000018C -19-21APR02-1/1

Diesel Fuel

| | | |
|----------|-----------|----------------|
| Capacity | Fuel tank | 110 l (29 gal) |
|----------|-----------|----------------|

Recommended quality requirements for diesel fuel:

- Cetane number of 40 minimum.** Cetane number greater than 50 is preferred, especially for temperatures below -20°C (-4 °F).
- When operating in cold circumstances use fuel that is suitable for winter operation and has a **cloud point** appearing at a lower level than the operating temperatures.
- Sulfur content:**
 - Sulfur content should not exceed 0.5%. Sulfur content less than 0.05% is preferred.
 - The period for changing the engine oil must be reduced by half if diesel fuel containing more than 0.5% sulphur is used.
 - Do not use diesel fuel with sulfur content greater than 1.0%.

NOTE: Do not use diesel fuel with sulfur content greater than 1.0%.

IMPORTANT: Use only pure fuel. DO NOT mix used engine oil or any other type of lubricant with diesel fuel.

Bio-diesel fuels

Bio-diesel fuels may be used ONLY if the fuel properties meet DIN 51606 or equivalent specification.

Continued on next page

EL62757,0000151 -19-18APR02-1/3

Check all bolted joints

When the *machine is new*, check all bolted joints daily, especially those between the boom and the frame and those between the axles and the frame.

Keep tightening until the bolts maintain their tightness.

Check the hose joints, too. During ordinary operation, the joints should be frequently checked in addition to scheduled maintenance.

Bolt torque values

| JOINT | QUANTITY | DIMENSION | QUALITY | TORQUE |
|--|----------|-----------|---------|--------|
| Wheel bolts | 8 | M22x1,5 | | 550 Nm |
| Cabine bolts | 4 | M16 | | 100 Nm |
| Joints between axles and frame Horizontal bolts | 4 | M24 | 8.8 | 950 Nm |
| Joints between axles and frame Vertical bolts | 8 | M24 | 12.9 | 950 Nm |

EL62757,0000221 -19-28NOV02-1/1

Maintenance - Every 10 hours or daily

Check the hydraulic oil level

1. Check the hydraulic oil level in the sight glass (1) of the tank.
When you do this, the lift and jib cylinders have to be in the innermost position.
2. If necessary add oil through the quick coupler (4) with the hydraulic fill-up pump (3) (optional equipment).
 - The quick coupler is mounted in a way that the new oil enters the system through the filter.
 - Also a manual pump can be used.
3. During the fill up, open venting screw (2). Do not forget to close the screw.

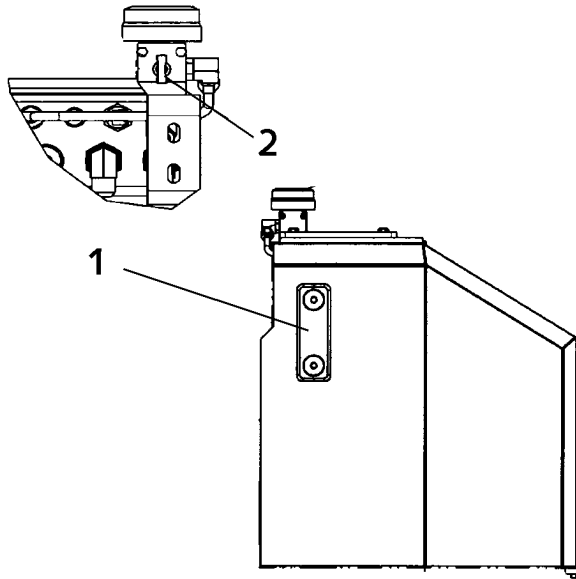
NOTE: Do not exceed the 'MAX' mark. There always has to be enough air space in the hydraulic oil tank, because the fluid level goes up and down during the operation.

See section 7-1, Vacuum pump (opt. equipment)

NOTE: Do not mix different type of oils.

| | | |
|--|----------------|--|
| Capacities | Hydraulic tank | min. 79 l (20.8 gal) / max. 150 l (39.6 gal) |
| Mineral oil | Summer oil | SMRs norm SH 68 |
| | Winter oil | SMRs norm SHS 32 |
| | Year-round oil | SMRs norm SHS 46 |
| If you use synthetic biodegradeable oil: | | Neste Biohydrauli SE 46 |

- 1—Oil level sight class
- 2—Venting screw
- 3—Switch, fill-up pump
- 4—Quick coupler - oil fill



T189431 -UN-09APR03



T189555 -UN-11APR03

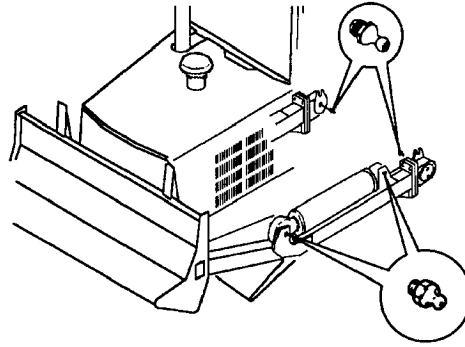
EL62757,00000E8 -19-10APR02-1/1

Grease the decking blade¹

Grease the decking blade pins.

NOTE: There are six greasing points for the decking blade. Four greasing points are external and two are inside the frame. The belly pan must be lowered to access the greasing points inside the frame. Use a 1/2" wrench to lower the belly pan.

NOTE: Working in difficult circumstances, if necessary, grease the decking blade daily.



T142858 -UN-13JUN01

¹Decking blade is an optional equipment.

EL62757,00000FE -19-10APR02-1/1

Check the battery electrolyte level.

Add purified water only into the battery.

EL62757,0000224 -19-28NOV02-1/1

Check the air conditioner

1. Check the amount of the refrigerant.
2. Check the service moisture indicator.

EL62757,00000FF -19-10APR02-1/1

Maintain the Boom

1. Check the boom slewing housing oil level
2. Check that the joint pins of the boom are secured
3. Check the sideways clearance of the extension booms.
4. Check the boom extension boom chains for tightness
5. Grease the rocker and cylinder bearings of the boom and the slewing system bearing.
6. Lubricate the extension boom chains with oil

EL62757,0000101 -19-10APR02-1/1

IMPORTANT: Immediately after completing any oil change, crank engine for 30 seconds without permitting engine to start. This will help insure adequate lubrication to engine components before engine starts.

9. Detach the connection (Y01) from the control unit of the fuel pump and operate the engine by means of the starter motor about 30 seconds. Reconnect the connector again. Start engine and run to check for possible leaks.
10. Stop engine and check oil level after 10 minutes. Oil level reading should be within crosshatch of dipstick.

DPSG,OUOE003,8005 -19-18JUN99-2/2

Replace the hydraulic return filter

CAUTION: Before working on the hydraulics, park the machine on a level surface, lower the decking blade, grapple to the ground, shut off the engine.

IMPORTANT: When replacing the filter make sure that no dirt enters the hydraulic system.

1. Open the vent screw (2) on top of the breather.
2. Remove the screws of cover (10)

CAUTION: The filter cover is under spring tension. Hold cover down while removing screws

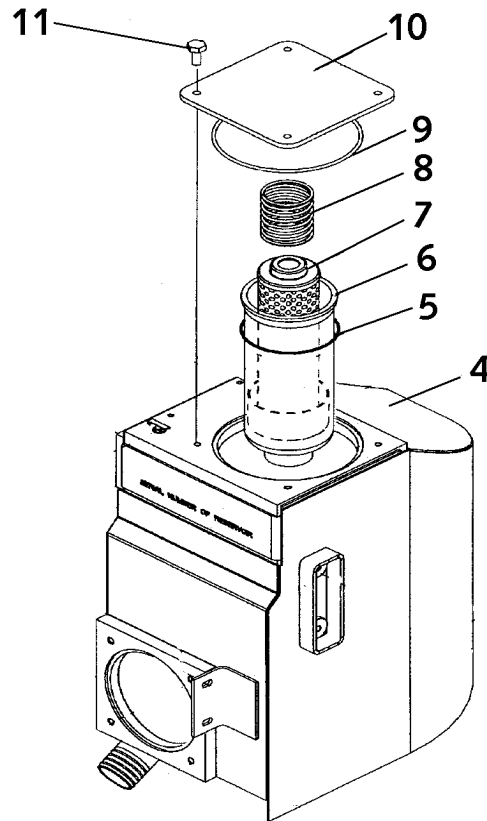
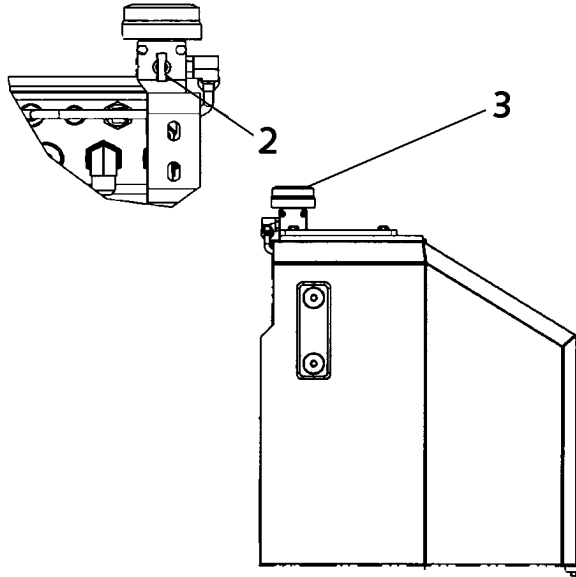
Clamp guarantees that the filter functions properly.

NOTE: Filter assembly consists of a filter element (7) and a canister (6). Filter is in lock position inside the canister.

IMPORTANT: The filter and the canister must be lifted together from the tank to prevent the contamination to flow into the tank.

3. Put the filter element and the canister into an oil collecting sump
4. Unlock the filter element by twisting it counterclockwise
5. Remove the filter element and clean the canister
6. Replace the filter element and put it inside the canister.

- 2—Vent screw
- 3—Breather
- 4—Hydraulic oil tank
- 5—O-ring
- 6—Canister
- 7—Filter element
- 8—Spring
- 9—O-ring
- 10—Cover
- 11—Screw



T189428 -UN-09APR03

T189429 -UN-09APR03

Change Bogie Housings Oil

NOTE: Before changing the bogie housing oil, let the machine stand for 30 minutes to allow impurities to settle to the bottom.

1. Park the machine on a level surface. Engage the parking brake. Install the frame lock.
2. Clean the area around the plugs.
3. Remove the filler plug to vent the bogie housing.
4. Remove the inspection plug.
5. Remove the drain plug and drain into a suitable container.

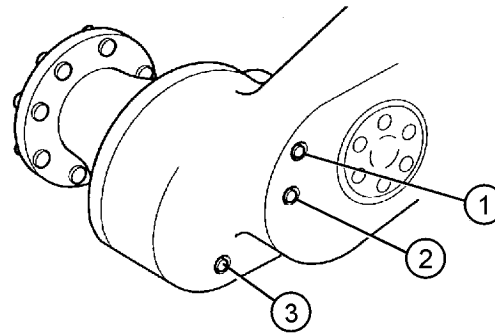
If the oil is cloudy, replace all the oil in the bogie housing.

NOTE: Dispose of waste properly. Do not dump oil on ground or in sewers.

6. Install the drain plug. Add oil to the bogie housing through the filler port until the oil level is up to the inspection port.
7. Install the filler and inspection plugs.

NOTE: Any time plugs are removed, the O-ring seals should be replaced.

8. Repeat the procedure at each bogie.



1—Filler Plug
2—Inspection Plug
3—Drain Plug

T142919 -UN-13JUN01

| | | |
|---------------|--|------|
| Bogie housing | /each | 52 l |
| Hypoid oil | API GL-5 or MIL-L-2105 B or D | |
| Viscosity | SAE 90 SAE 85W/90 SAE 80W/90 SAE 75W/90 | |

Filling the oil

IMPORTANT: Do not exceed the 'MAX' mark.

There always has to be enough air space in the hydraulic oil tank, because the fluid level goes up and down during the operation.

IMPORTANT: Do not mix different type of oils.

Add oil through the quick coupler (4) with the hydraulic fill-up pump (3) (optional equipment). The quick coupler is mounted in a way that the new oil enters the system through the filter.

NOTE: During the fill up, open the vent tap of the hydraulic tank.

1. Clean the filling hose and remove the dust cap.
2. Place the hose into the canister containing new hydraulic oil.
3. Start the filling pump with switch (3).
4. Close the vent tap.

NOTE: Also a manual pump can be used.



3—Switch for hydraulic fill-up pump
4—Quick coupler

EL62757,00000EC -19-10APR02-2/2

CLICK HERE TO **DOWNLOAD** THE COMPLETE MANUAL

- Thank you very much for reading the preview of the manual.
- You can download the complete manual from: www.heydownloads.com by clicking the link below



- Please note: If there is no response to CLICKING the link, please download this PDF first and then click on it.

CLICK HERE TO **DOWNLOAD** THE COMPLETE MANUAL

Hydrostatic System: Drive Motor adjusting

Checking and adjusting drive motors pressure cut-off settings

The tools needed: 3-mm hex key and 10-mm wrench

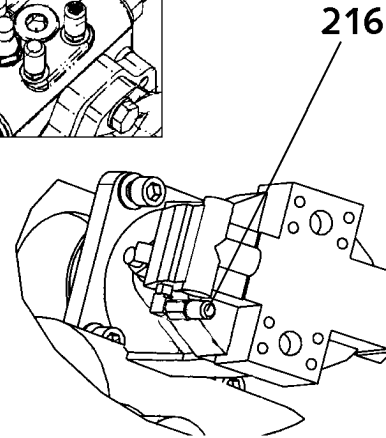
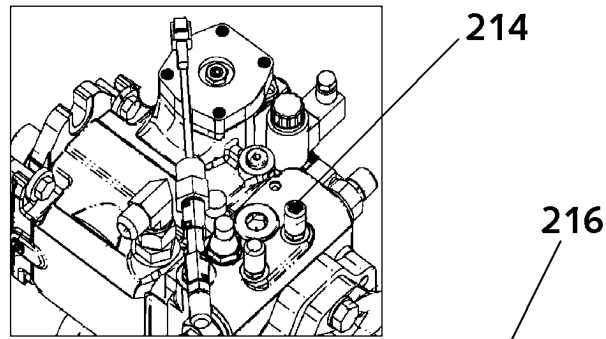
1. Disconnect the parking brake solenoid Y41 from the valve block. After this, the parking brake will stay engaged.
2. Connect a pressure sensor to measuring point (216) (...60 MPa) (0...8702 psi) and a pressure gauge to measuring point (214) (...60 MPa) (0...8702 psi)
3. Disconnect the connector of the motor steering (pos. C)
4. Connect a 24 V tension with a separate cable from the power outlet (2) next to the main switch (1) to the motor steering (pos.C).
5. Start the engine
6. Engage high gear and rear wheel drive. Let the engine idle.
7. Select the driving direction forward.
8. Set the adjustable speed range (snail) to 15 %
9. Press smoothly the drive pedal, the pressure will first start to rise at measuring points (216) and (214).
10. The engine rpm and the pressures are increasing, but at a certain point the pressure of (216) stops to increase and finally it starts to decrease.

C—Adjusting screw

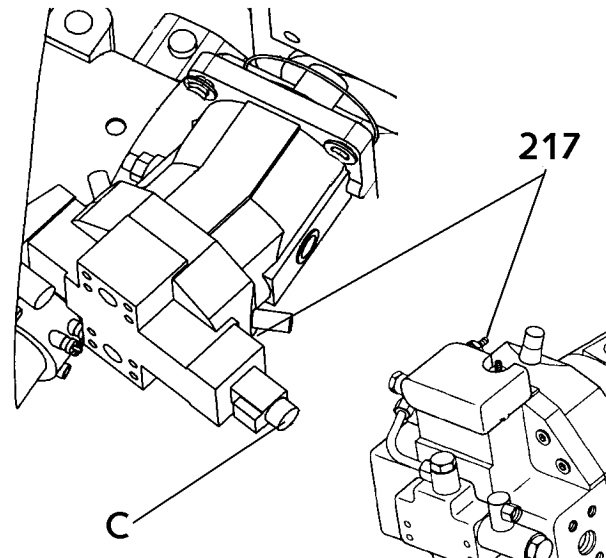
(214)—Measure point, drive forward

(216)—Measure point, motor cut-off

(217)—Adjusting screw, motor cut-of



T189329 -UN-07APR03



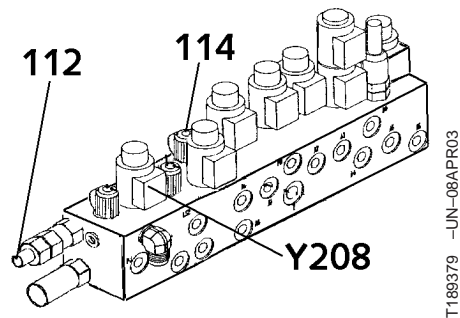
T189330 -UN-07APR03

Continued on next page

EL62757,00001A0 -19-21APR02-1/2

Checking and Adjusting Parking Brake Pressure

1. Start the engine
2. Engage the working rpm and boom.
3. Use extension in movement or Y208 valve to raise the pressure
4. Check the pressure at measuring point 114. The pressure should be 3,0 MPa
5. If necessary, the pressure is adjusted from adjusting screw 112.



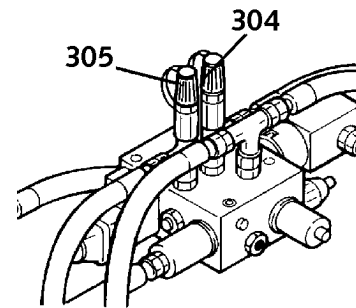
T188379 -UN-08APR03

EL62757,00003C9 -22-10APR03-1/1

Checking the Work Brake

1. Connect a pressure sensor (0...30 MPa) (0...4351 psi) to measuring points (305) and (304).
2. Start the engine
3. Disengage the parking brake. Symbol 'P' on the TMC display will be replaced by 'S'.
4. Make sure that the maximum pressure reading from the pressure measuring points (305) and (304) are (6.5 ... 7.0 MPa (943...1015 psi).

NOTE: The pressures cannot be adjusted.



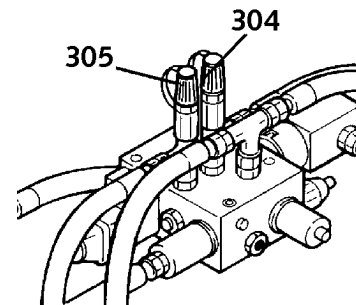
T152794 -UN-13OCT02

EL62757,00001AB -19-21APR02-1/1

Checking the Drive Brake (Brake Pedal)

1. Connect a pressure sensor (0...30 MPa) (0...4351 psi) to measuring points (305) and (304)
2. Start the engine and keep engaged the parking brake
3. Press the brake pedal and ensure that the pressure reading from the (305) and (304) rises to 6.5 ... 7.0 MPa (943...1015 psi).

NOTE: The pressures cannot be adjusted.



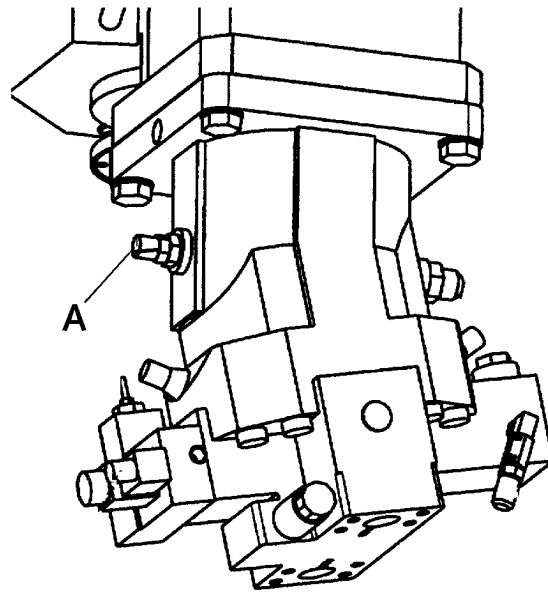
T152794 -UN-13OCT02

EL62757,00001AC -19-21APR02-1/1

The RPM Sensor of the Drive Hydrostatics Motor

The sensor (A4) is located on the left-hand side of the drive hydrostatics motor. The sensor has an impact on the function of the speedometer and odometer as well as on the coupling of the work brake.

A—RPM Sensor



T159873 -UN-01OCT02

EL62757,00001B5 -19-21APR02-1/1

Hydraulic Tank Sensors

Hydraulic Oil Level Sensor

The sensor (5) triggers the alarm if the hydraulic oil levels drops below the acceptable limit.

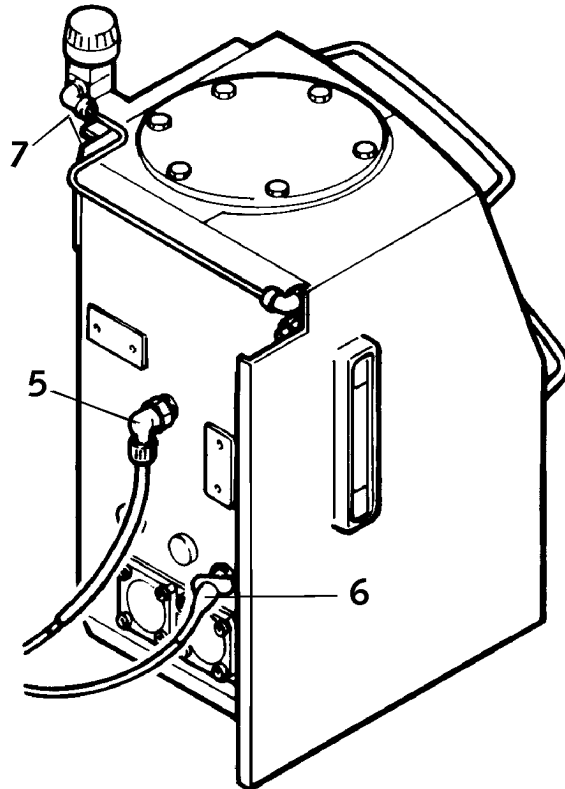
Hydraulic Oil Temperature Sensor

The sensor (6) sets off the alarm if the hydraulic oil temperature exceeds the acceptable limit.

Hydraulic Oil Return Filter Sensor

The sensor (7) triggers the alarm if the hydraulic oil filter has clogged.

5—Level Sensor
6—Temperature Sensor
7—Return Filter Sensor



T152795 -UN-15FEB03

EL62757,00001B6 -19-21APR02-1/1

Boom, Maintenance every 50 hours

Check the boom slewing housing oil level

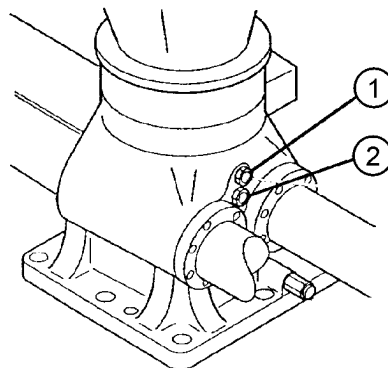
The boom slew system and the lower bearing of the tower are immersed in oil.

The oil level is checked in the measuring glass.

When the oil has flowed to the base after use, the oil level must exceed the upper mark on the measuring glass. This is to ensure that the slewing cylinder pipes will not corrode.

As necessary fill in oil through the plug (1)

Check that the joint pins of the boom are secured.



Boom slewing housing

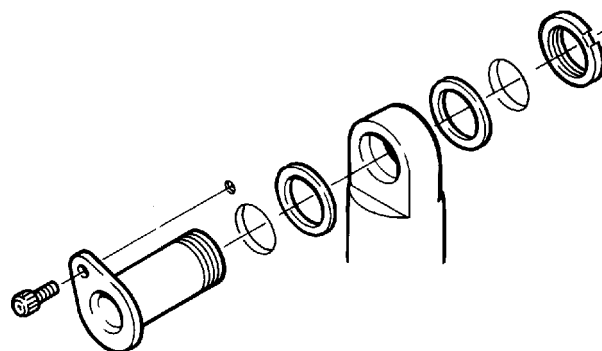
- 1—Max oil level
- 2—Min oillevel

T142875 -UN-13JUN01

EL62757,00003C3 -22-06APR03-1/9

1. The joint pins must be well lubricated
2. Check that the joint pin are in good conditions.
3. Check that the pins are properly locked

Check the sideways clearance of the extension booms.



Joint pins

T142876 -UN-13JUN01

Continued on next page

EL62757,00003C3 -22-06APR03-2/9

Clean the Rotator Magnetic Plug

NOTE: The rotator is equipped with a magnetic plug to collect metallic impurities from the oil. This plug should be inspected and cleaned regularly.

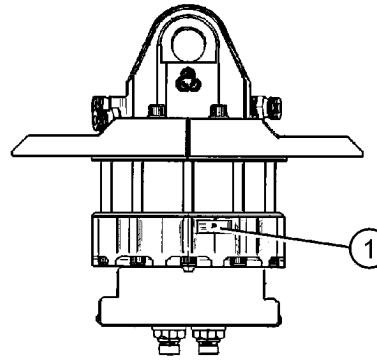
To clean the magnetic plug:

1. Lower the grapple to the ground.
2. Remove and clean plug.
3. Install plug and tighten to specified torque.

Specification

Rotator Magnetic Plug—Torque..... 60Nm

4. Rotate the grapple continuously in one direction through ten complete rotations to circulate the oil from the rotator to the tank.



Grapple rotator magnetic plug

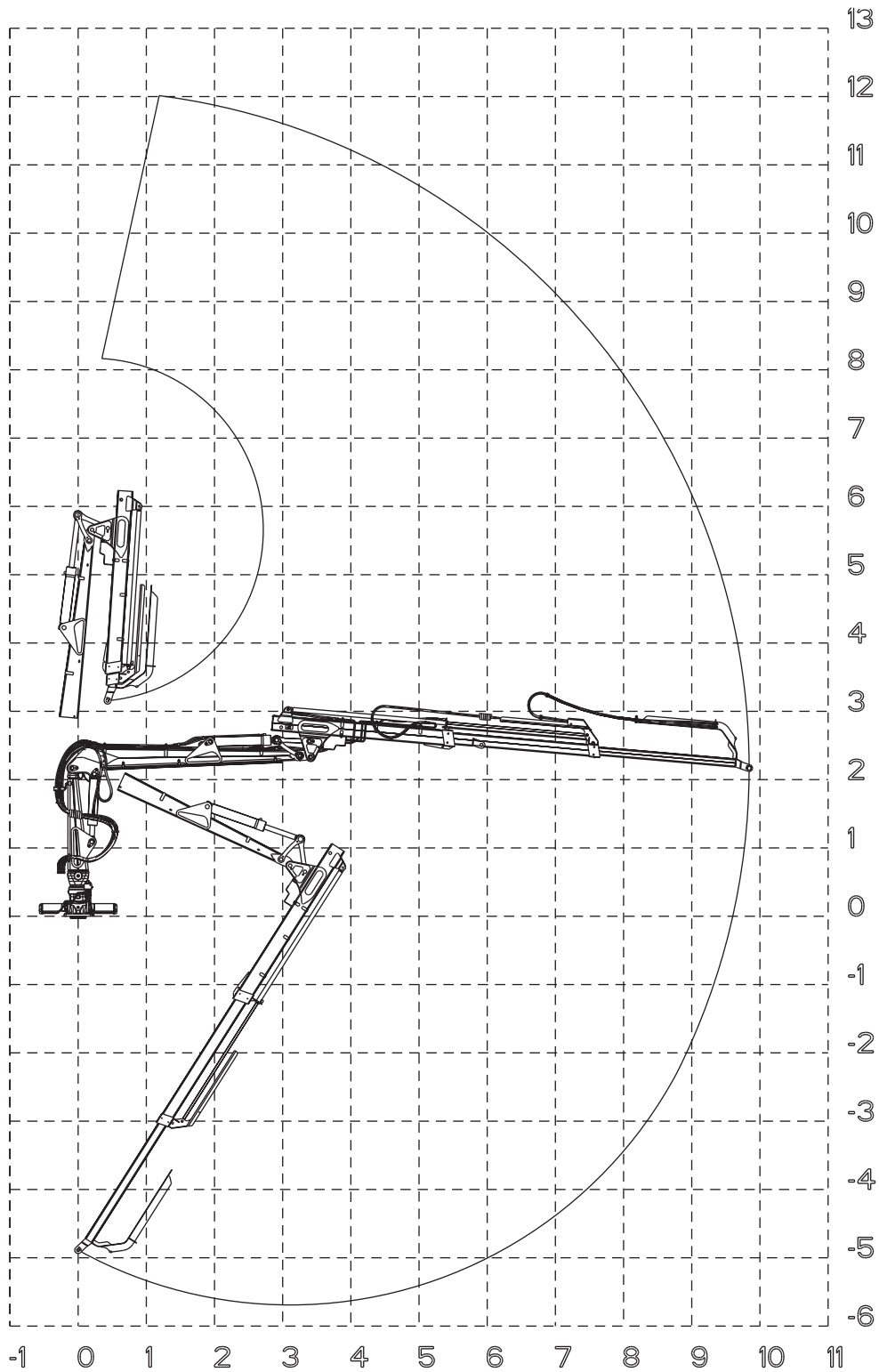
1—Magnetic lug

T142918 -UN-13JUN01

Continued on next page

EL62757,00003CA -22-10APR03-2/3

Boom



CF198 wide range

Continued on next page

EL62757.00003C5 -22-06APR03-9/10

10-1-27

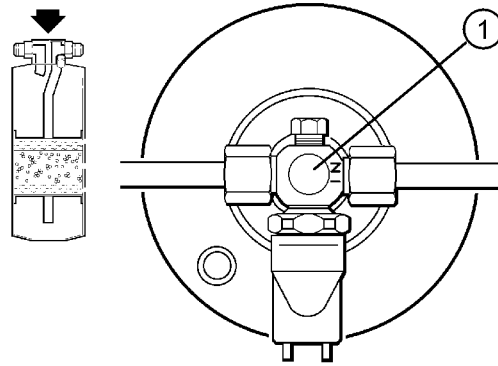
032604
PN=207

T198625 -UN-24MAR04

Maintenance and Inspections: Check the refrigerant level.

1. The engine must be running at 1500 RPM.
2. Switch on the air conditioner.
3. Turn the fan speed and thermostat to the maximum position.

When the compressor is running no bubbles should be seen in the sightglass (1), and the refrigerant should not appear 'cloudy'. Bubbles and cloudiness indicate that the charge of refrigerant is insufficient. If this is the case, immediately contact the nearest authorized dealer to have the problem remedied.



T139550 -UN-06JUN01

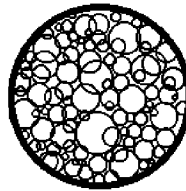
1—Inspection sightglass

EL62757,00001DD -19-22APR02-1/5

A. CLEARLY INSUFFICIENT AMOUNT OF REFRIGERANT

- Continuous flow of bubbles or a flow that appears foamy
- The difference in temperature between the low and high pressure sides is small.
- The pressure of the high-pressure side is unusually low.

STOP THE COMPRESSOR IMMEDIATELY and contact an authorized mechanic to check the system.



T139551 -UN-15JUN01

Continued on next page

EL62757,00001DD -19-22APR02-2/5

Start heating; press (3).

To reduce heating duration: press (4).

To increase heating duration (to max. 120 min):
press (5).

b. Permanently

Do not switch heating on.

Press the (4) key and hold it down (approx. 3 s) until
the display appears and flashes.

Release the key.

Then set the heating duration (10...120 min) using
the(4) or (5) key. The new heating duration is set when
the display disappears.

4. **Switching off the heater**

Press (3), automatic cooling phase, about 130
seconds.

5. **Heating without preselection (ignition of the base machine is on)**

Press (3) .

Heating stays in operation until ignition is switched off.

After ignition is switched off, a residual heating period
of 15 min remains.

This can be changed (1...120 min) by pressing the (4)
or (5) key. Switching off the heater: press (3).

6. **Heating operation preselection**

Continued on next page

EL62757,00001FF -19-24APR02-5/9

IMPORTANT: Before leaving the machine, remember to turn the main switch to 0 to set the automatic monitoring and triggering of the fire extinguishers.

Check every week:

- That diodes 1, 2 and 3 light up when switch 6 is set to its middle position.
- That diode 4 also lights up if the battery master switch is ON
- That the light and sound alarms are activated and that push-button 5 flashes, diodes 1 and 3 light up when switch 6 is moved to its upper position.
- Ensure that the hand-held extinguishers are in place and that the indicators show that they are full.

Annual inspection

The system is to be inspected once a year by authorized service personnel. *This inspection is a condition of the insurance companies.*

IMPORTANT: Disconnect the connector of the control unit before carrying out any of the following tasks;

- pressure-jet washing
- steam-jet washing
- electric welding
- battery charging

| Symptom | Problem | Solution |
|-------------------------------|--------------------------------|--------------------------------------|
| Starter will not crank | Loose or corroded connections. | Clean and tighten loose connections. |
| | Low battery output voltage. | See your Timberjack dealer. |
| | Faulty start circuit relay. | See your Timberjack dealer. |
| Starter cranks slowly | Low battery output. | See your Timberjack dealer. |
| | Crankcase oil too heavy. | Use proper viscosity oil. |
| | Loose or corroded connections. | Clean and tighten loose connections. |

RG, RG34710, 5608 -19-20MAY96-6/6

Diagnose Drive Lines

| Symptom | Problem | Solution |
|--|---|------------------------|
| Driveline emitting a chattering noise | Faulty universal joint | See authorized dealer. |
| | Faulty carrier bearing | See authorized dealer. |
| Driveline causing machine vibration | Faulty universal joint | See authorized dealer. |
| | Loose connector bolts at the coupling yokes | See authorized dealer. |
| | Damaged drive shaft | See authorized dealer. |
| | Misaligned universal joint yokes | See authorized dealer. |

OUTJ003, 0000679 -19-14MAY01-1/1

| Symptom | Problem | Solution |
|---|---|---|
| All or any boom functions too slow | Insufficient oil. | Check level in hydraulic tank. Add oil, if necessary. |
| | Defective valve spool port reliefs at boom control valve. | See authorized dealer. |
| | Defective main relief valve at Boom Control Valve. | See authorized dealer. |
| | Improper work pump output . | See authorized dealer. |
| | Defective or worn work pump. | See authorized dealer. |
| | Engine does not maintain correct RAM | Adjust engine speed control throttle. |
| Grapple does not hold | Defective control spool in boom control valve. | Service valve. See authorized dealer. |
| | Defective cylinder seals. | Service cylinder. See authorized dealer. |
| | Cylinder piston sticking in barrel or loose on rod. | Service cylinder. See authorized dealer. |
| Boom slews on its own | Defective control spool in boom control valve. | Service valve. See authorized dealer. |
| Excessive heating | Insufficient oil. | Check level in hydraulic tank. Add oil, if necessary. |
| | Improper work pump output. Excessive oil flow. | See authorized dealer. |
| | Defective or worn work pump. | See authorized dealer. |
| | Blocked hoses or filter. | See authorized dealer. |
| | Defective valve spool port reliefs at boom control valve. | Service valve. See authorized dealer. |
| | Defective main relief valve at Boom Control Valve. | Service valve. See authorized dealer. |

Continued on next page

OUTJ003,0000680 -19-14MAY01-2/4

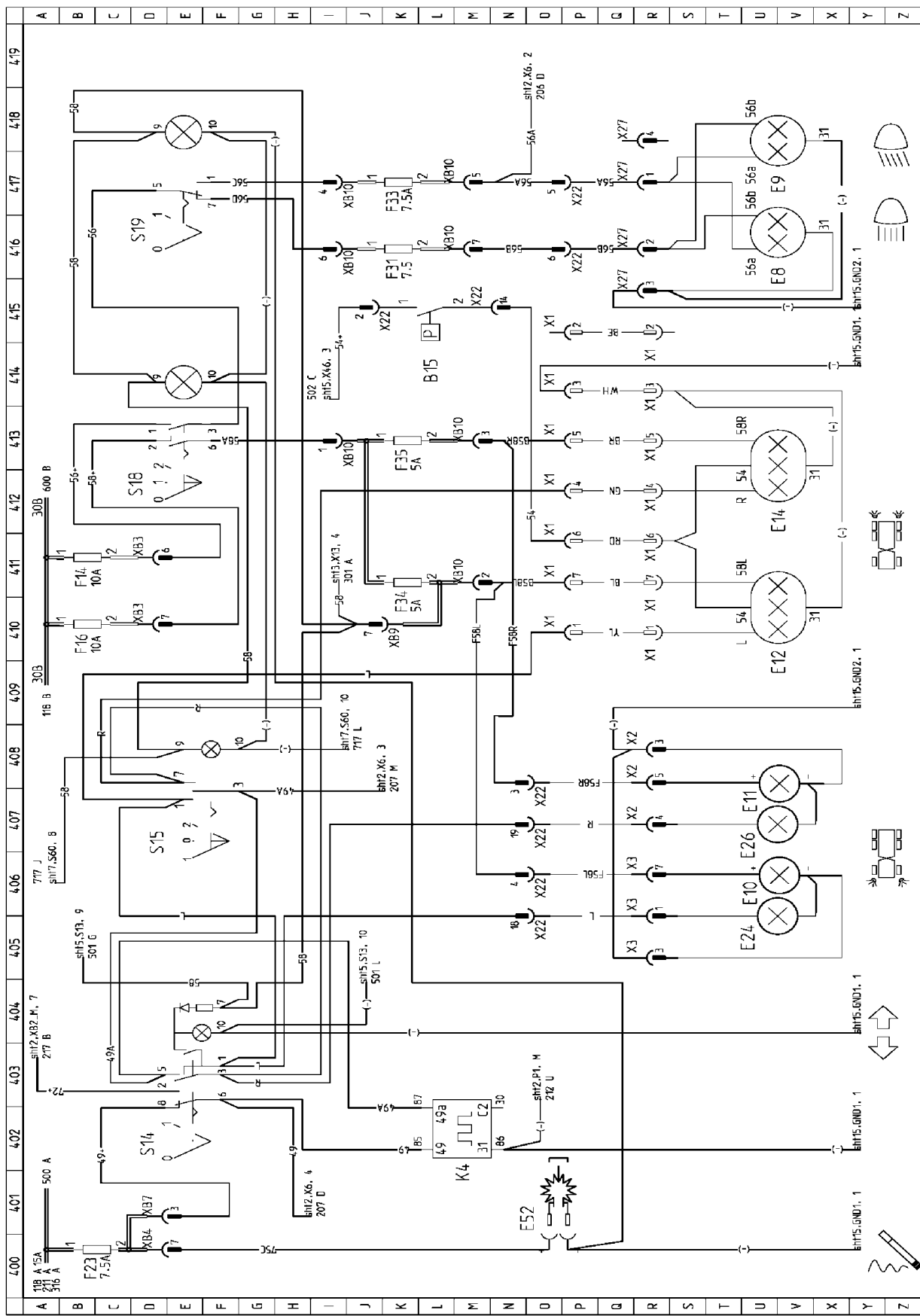


| | | | | | | | | |
|------------------------|---------------------------------|-------------------|--------------------|---------------------------------|---|---------------------------|-----------------|--------------|
| REVISION NUMBER B 0 | DATE (YYYY-MM-DD) 2003-01-30 | CHANGED BY TLn | APPROVED BY TLn | TITLE SCHEMATIC DIAGRAM B'00 | DATE (YYYY-MM-DD) APPROVED BY 2003-01-16 TLn | DRAWING NUMBER F624229 | REVISION B 0 | SHEET 5/5 |
|------------------------|---------------------------------|-------------------|--------------------|---------------------------------|---|---------------------------|-----------------|--------------|

Timberjack

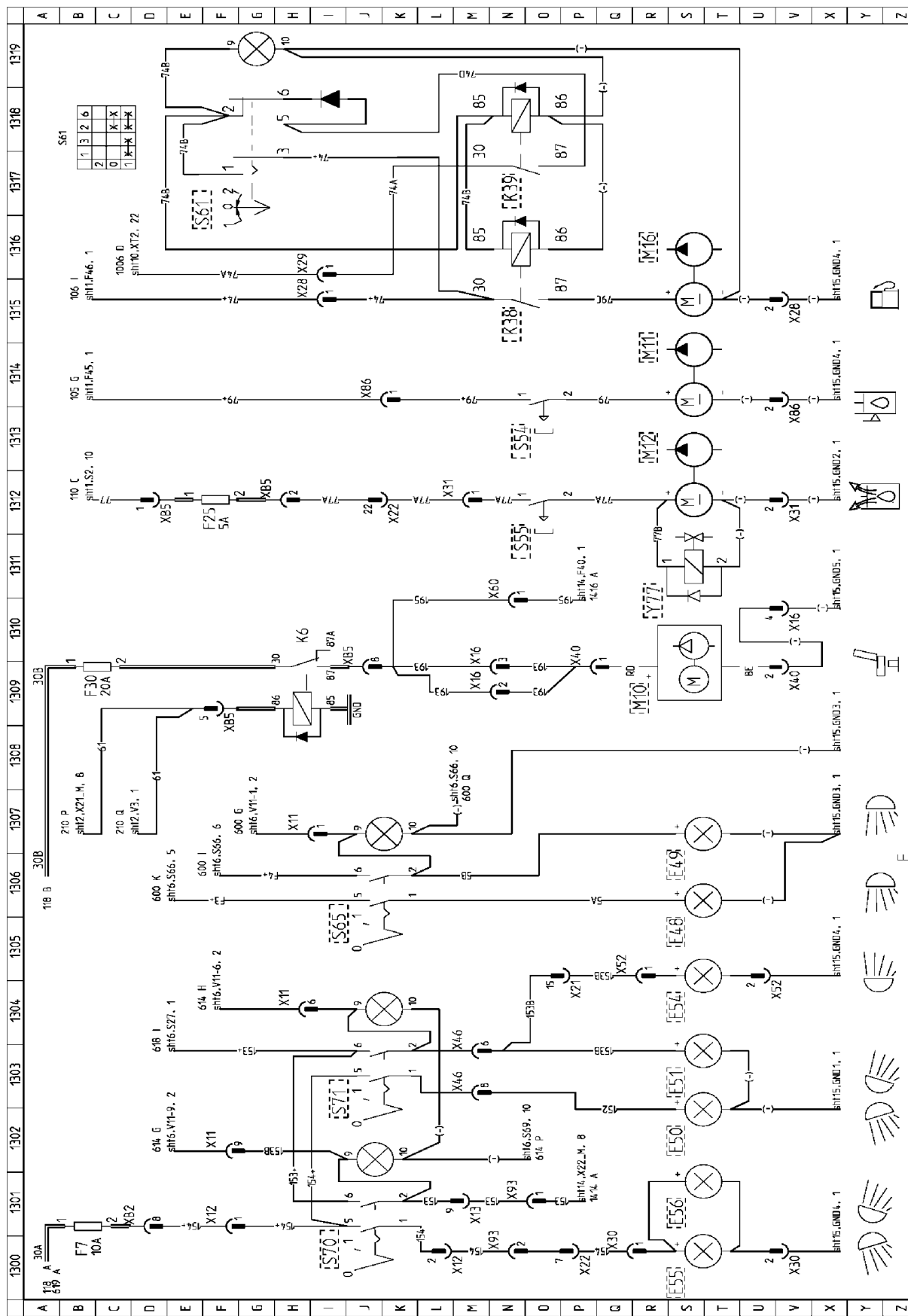
T189405 -UN-09APR03

EL62757.00001EC -19-22APR02-2/2



| | | | |
|--------------------------------|---------------------------------|------------------|-------------------|
| REVISED NUMBER D 0 | DATE (YYYY-MM-DD) 2004-03-15 | CHANGED BY TJ | APPROVED BY MH |
| REVISION NUMBER F626571 D 0 | DATE (YYYY-MM-DD) 2003-10-05 | DRAWN BY TJ | APPROVED BY PJ |
| TITLE WIRING DIAGRAM 8100 | | | |
| DRAWING NUMBER F626571 D 0 | | | |
| REVISION 4/15 | | | |

T189409 -UN-26MAR04



| | | | | | | | | | | | | | |
|---------------------|------------|-----|-----|-----|------------|-----|-----|------------|----|-----|--------------|-------|-----|
| REV | DATE | BY | APP | CHG | DATE | BY | APP | DATE | BY | APP | DATE | BY | APP |
| 00 | 1990-03-16 | IMa | | | 2004-03-16 | IMa | | 2002-12-20 | PJ | | 2003-10-06 | | |
| TITLE | | | | | | | | | | | REVISION | SHEET | |
| WIRING DIAGRAM 8100 | | | | | | | | | | | F626571 D 0 | 13/15 | |
| DRAWN BY | | | | | | | | | | | DRAWN NUMBER | | |
| IMa | | | | | | | | | | | F626571 D 0 | | |
| EFFECTIVE FROM | | | | | | | | | | | | | |
| W JOB 1007442... | | | | | | | | | | | | | |
| DATE (YYYY-MM-DD) | | | | | | | | | | | | | |
| 2002-12-20 | | | | | | | | | | | | | |
| DATE (YYYY-MM-DD) | | | | | | | | | | | | | |
| 2003-10-06 | | | | | | | | | | | | | |

Timberjack

T189418 -UN-26MAR04

CLICK HERE TO **DOWNLOAD** THE COMPLETE MANUAL

- Thank you very much for reading the preview of the manual.
- You can download the complete manual from: www.heydownloads.com by clicking the link below



- Please note: If there is no response to CLICKING the link, please download this PDF first and then click on it.

CLICK HERE TO **DOWNLOAD** THE COMPLETE MANUAL