



Operator's Manual

Serial Number Range

GSTM-1530/32

from GS30P-200101

GSTM-1930/32

from GS32P-200101

GSTM-1932 XH

from GS46P-200101

GSTM-2032

from GS30D-40101

GSTM-2632

from GS32D-10101

GSTM-3232

from GS46D-20101

GSTM-2046

GSTM-2646

GSTM-2646 XH

GSTM-3246

GSTM-3246 XH

GSTM-4046

ANSI/CSA

North America

South America

Asia

with

Maintenance

Information

Original Instructions

Eighth Edition

Third Printing

Part No. 1296776GT

CLICK HERE TO **DOWNLOAD** THE COMPLETE MANUAL

- Thank you very much for reading the preview of the manual.
- You can download the complete manual from: www.heydownloads.com by clicking the link below

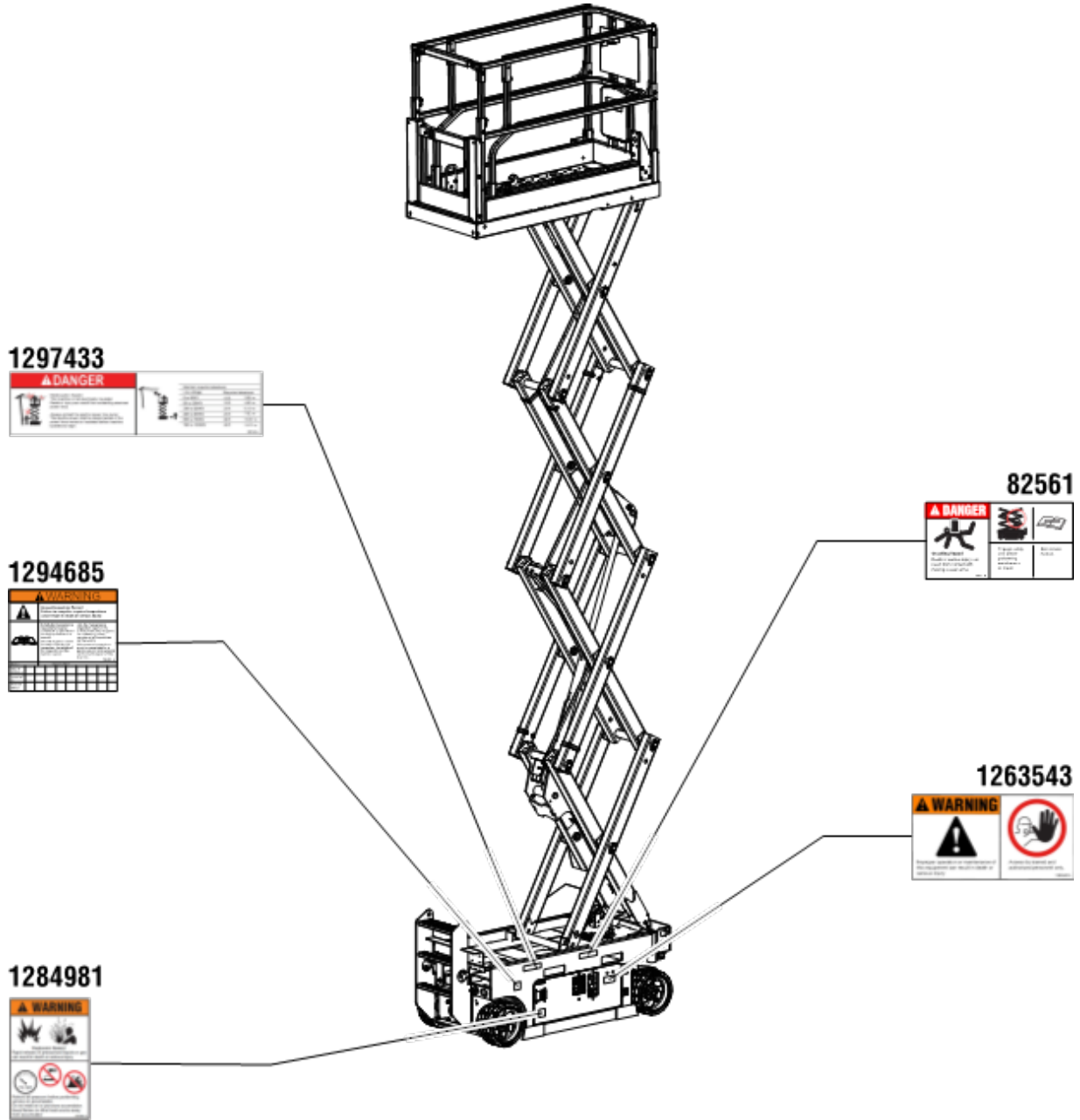


- Please note: If there is no response to CLICKING the link, please download this PDF first and then click on it.

CLICK HERE TO **DOWNLOAD** THE COMPLETE MANUAL

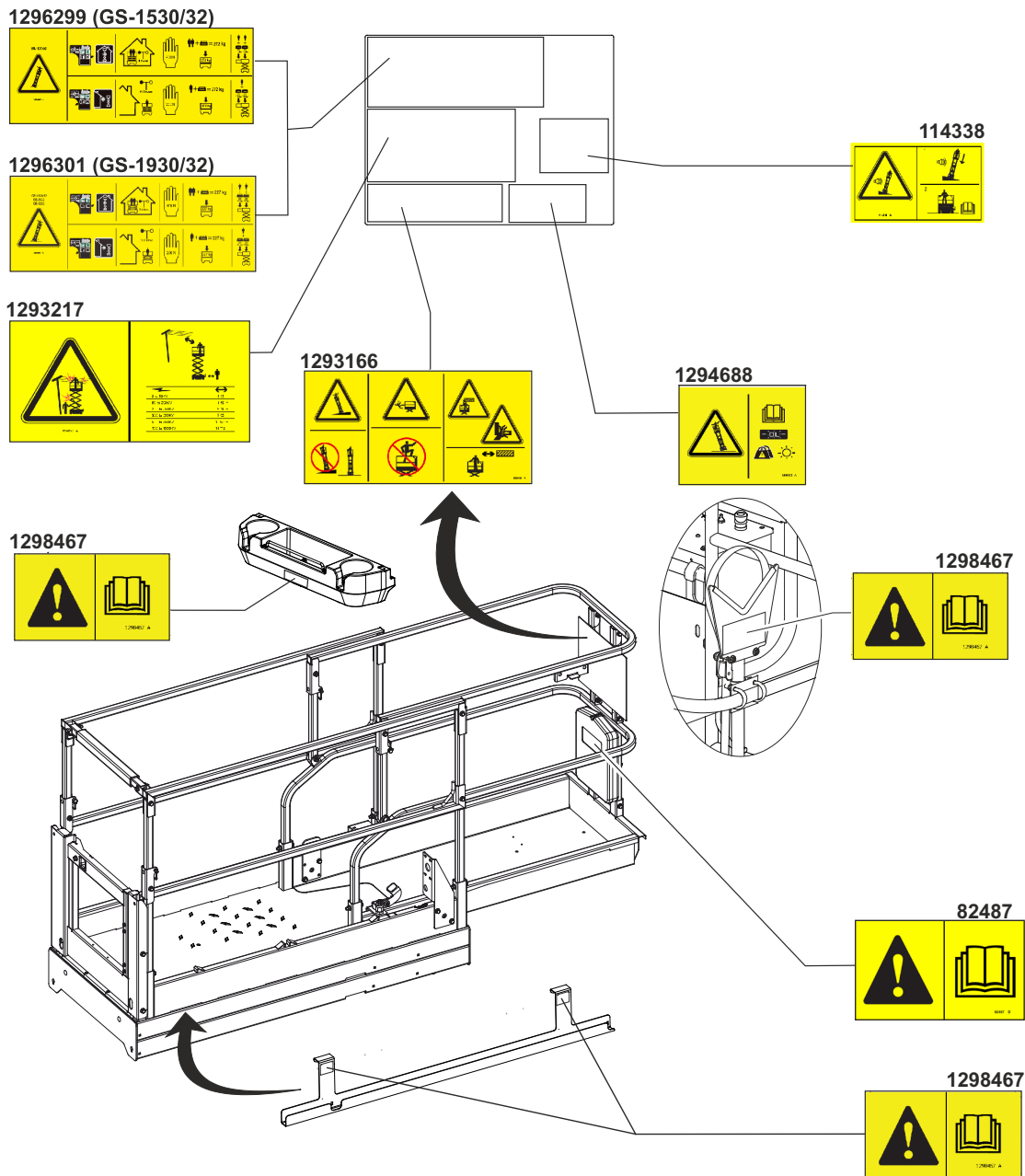
General Safety

GS-1530, GS-1532, GS-1930, GS-1932, GS-1932 XH



General Safety

GS-1530, GS-1532, GS-1930, GS-1932, GS-1932 XH



Work Area Safety



Do not operate the machine in strong or gusty winds. Do not increase the surface area of the platform or the load. Increasing the area exposed to the wind will decrease machine stability.



Do not push off or pull toward any object outside of the platform.



Use extreme care and slow speeds while driving the machine in the stowed position across uneven terrain, debris, unstable or slippery surfaces and near holes and drop-offs.

Do not drive the machine on or near uneven terrain, unstable surfaces or other hazardous conditions with the platform raised.

Do not use the machine as a crane.

Do not push the machine or other objects with the platform.

Do not contact adjacent structures with the platform.

Do not tie the platform to adjacent structures.

Do not place loads outside the platform perimeter.

Do not operate the machine with the chassis trays open.

Model	Maximum allowable manual force	Maximum occupants
GS-1530	Indoor – 90 lbs/400N	Indoor – 2
	Outdoor – 45 lbs/200 N	Outdoor – 1
GS-1532	Indoor – 90 lbs/400N	Indoor – 2
	Outdoor – 45 lbs/200 N	Outdoor – 1
GS-1930	Indoor – 90 lbs/400N	Indoor – 2
	Outdoor – 45 lbs/200 N	Outdoor – 1
GS-1932, GS-1932 XH	Indoor – 90 lbs/400N	Indoor – 2
	Outdoor – 45 lbs/200 N	Outdoor – 1
GS-2032	Indoor – 90 lbs/400N	Indoor – 2
	Outdoor – 45 lbs/200 N	Outdoor – 1
GS-2632	Indoor – 90 lbs/400N	Indoor – 2
	Outdoor – 45 lbs/200 N	Outdoor – 1
GS-3232	Indoor – 90 lbs/400N	Indoor – 2
	Outdoor – 45 lbs/200 N	Outdoor – 1
GS-2046	Indoor – 90 lbs/400N	Indoor – 2
	Outdoor – 45 lbs/200 N	Outdoor – 1
GS-2646, GS-2646 XH	Indoor – 90 lbs/400N	Indoor – 2
	Outdoor – 45 lbs/200 N	Outdoor – 1
GS-3246, GS-3246 XH	Indoor – 90 lbs/400N	Indoor – 2
	Outdoor – 45 lbs/200 N	Outdoor – 1
GS-4046	Indoor – 90 lbs/400N	Indoor – 3
	Outdoor – 45 lbs/200 N	Outdoor – 1

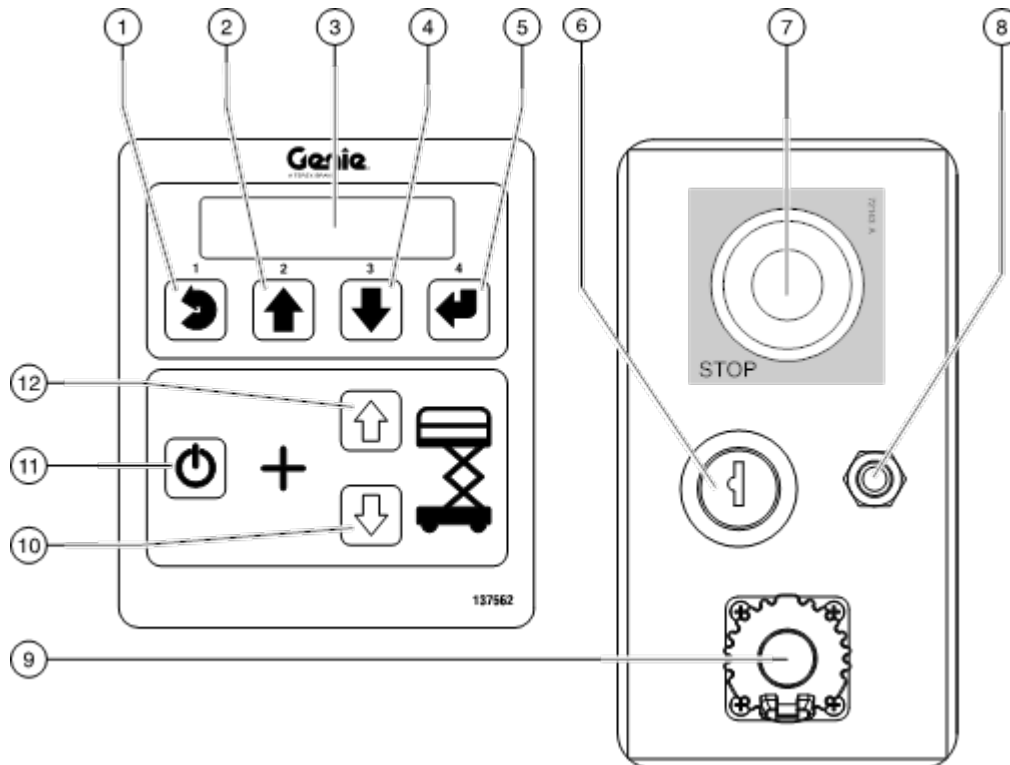
Do not alter or disable the limit switches.

Do not alter or disable machine components that in any way affect safety and stability.

Do not replace items critical to machine stability with items of different weight or specification.

Controls

The ground control station is to be used as a means to raise the platform for function tests and for storage purposes. The ground control station can be used in the event of an emergency to rescue an incapacitated person in the platform.



Ground Control Panel

- | | |
|--|---|
| <ul style="list-style-type: none"> 1 Menu escape button 2 Menu up button 3 LCD diagnostic readout 4 Menu down button 5 Menu enter button 6 Key switch for platform/off/ground selection
Turn the key switch to the platform position and the platform controls will operate. Turn the key switch to the off position and the machine will be off. Turn the key switch to the ground position and the ground controls will operate. | <ul style="list-style-type: none"> 7 Red Emergency Stop button
Push in the red Emergency Stop button to the off position to stop all functions. Pull out the red Emergency Stop button to the on position to operate the machine. 8 7A breaker for electrical circuits 9 Tech Pro Link Connector 10 Platform down button 11 Lift function enable button
Press and hold this button to activate the lift function. 12 Platform up button |
|--|---|

Inspections

Test the Outdoor Use Button

- 31 Do not press and hold the function enable switch on control handle.
- 32 Press the outdoor use button.
- ⊙ **Result:** The LED under the outdoor button will illuminate.
- 33 Press the lift function enable button.
- 34 Press and hold the function enable switch on the control handle. Slowly move the control handle in the direction indicated by the blue arrow.
- ⊙ **GS-1530:** Result: The platform should raise to a maximum of 12 ft 8in/3.86 m and stop. The alarm should sound. The platform controls LED readout should display OHL.
- ⊙ **GS-1532:** Result: The platform should raise to a maximum of 12 ft 8 in/3.86 m and stop. The alarm should sound. The platform controls LED readout should display OHL.
- ⊙ **GS-1930/32:** Result: The platform should raise to a maximum of 14 ft 8 in/4.47 m and stop. The alarm should sound. The platform controls LED readout should display OHL.
- ⊙ **GS-1932XH:** Result: The platform should raise to a maximum of 19 ft 3 in/5.85 m and stop. The alarm should sound. The platform controls LED readout should display OHL.
- ⊙ **GS-2032:** Result: The platform should raise to a maximum of 16 ft/4.88 m and stop. The alarm should sound. The platform controls LED readout should display OHL.
- ⊙ **GS-2632:** Result: The platform should raise to a maximum of 19 ft/5.79 m and stop. The alarm should sound. The platform controls LED readout should display OHL.
- ⊙ **GS-3232 (on wheels):** Result: The platform should raise to a maximum of 15 ft 9 in/4.80 m and stop. The alarm should sound. The platform controls LED readout should display OHL.
- ⊙ **GS-2046:** Result: The platform should raise to a maximum of 16 ft 4 in/4.98 m and stop. The alarm should sound. The platform controls LED readout should display OHL.
- ⊙ **GS-2646:** Result: The platform should raise to a maximum of 19 ft 8 in/5.99 m and stop. The alarm should sound. The platform controls LED readout should display OHL.
- ⊙ **GS-2646XH:** Result: The platform should raise to a maximum of 26 ft 1 in/7.96 m and stop. The alarm should sound. The platform controls LED readout should display OHL.
- ⊙ **GS-3246:** Result: The platform should raise to a maximum of 22 ft/6.71 m and stop. The alarm should sound. The platform controls LED readout should display OHL.
- ⊙ **GS-3246XH:** Result: The platform should raise to a maximum of 32 ft 1 in/9.78 m and stop. The alarm should sound. The platform controls LED readout should display OHL.
- ⊙ **GS-4046:** Result: The platform should raise to a maximum of 23 ft/7.01 m and stop. The alarm should sound. The platform controls LED readout should display OHL.

Inspections


Inspection for Decals with Words GS-2032, GS-2632 and GS-3232

Determine whether the decals on your machine have words or symbols. Use the appropriate inspection to verify that all decals are legible and in place.

Part No.	Decal Description	Qty
28174	Label – Power to Platform, 230V*	2
28235	Label – Power to Platform, 115V*	2
28236	Warning – Improper Operation	1
31060	Danger – Tip-over Hazard, Limit Switch	1
31508	Danger – Electrocutation Hazard	1
38149	Label – Patents	1
43618	Label – Directional Arrows	2
43619	Label – Safety Arm	1
43658	Label – Power to Charger, 230V*	1
44736	Danger – Tip-over Hazard, Tilt Alarm	1
44980	Label – Power to Charger, 115V*	1
44981	Label – Air Line to Platform*	2
46287	Label – Tire Specification	4
52475	Label – Transport Tie-down	3
72086	Label – Lifting Point	4
72143	Label – Emergency Stop	1
72999	Label – Environ MV46	1
82366	Label – Chevron Rando*	1
82506	Danger – Foot Crushing Hazard, GS-3232*	4
82557	Label – Platform Controls Location	1
82561	Danger – Crushing Hazard	2
82657	Instructions – Battery Connection Diagram	1
82666	Label - Forklift Pocket	4
137605	Label – Emergency Stop, Platform Control	1
137656	Label – Drive/Steer Direction, Platform Control	1
1263543	Warning – Compartment Access	2
1265361	Label – Battery Charger Indicator	1
1272242	Label – Machine Registration/Owner Transfer	1
1278704	Label – Battery Charger Indicator	1
1280819	Label – Warning, Prop 65	1
1281174	Label – Lanyard Anchorage Point, Fall Arrest/Fall Restrained	3
1283810	Label – Platform Control Panel, GS-2032 & GS-2632*	1
1283812	Label – O/R Dual Zone, GS-3232*	1
1283878	Label – Tech Pro Link	1

Part No.	Decal Description	Qty
1284981	Warning – Explosion Hazard, Accumulator	1
1290659	Danger – Electrocutation Hazard	2
1290664	Instructions – Operation, Ground Control	1
1290668	Instructions – Battery Charger Operation	1
1290675	Danger – Explosion/Burn Hazard	1
1292051	Label – Emergency Lowering	1
1292747	Label - Tire Specification	4
1292960	Label – Brake Release Safety and Operating Instructions, Electric Drive*	1
1292990	Label – Release Brake	1
1293165	Danger – Tip-over, Crush Hazard, GS-2032 & GS-2632*	1
1293324	Label – ICES-2/CAN-2 Compliance	1
1294398	Label – ANSI/CSA Compliant	1
1294635	Label – Platform Overload LED Indicator Light	1
1294685	Instructions – Annual Inspection	1
1296034	Label – Smartlink Dual Zone	2
1296300	Danger – Max. Capacity, Side Force, GS-1930/32, GS-2632, GS-3232*	1
1296305	Danger – Max. Capacity, Side Force, GS-2032*	1
1296821	Decal – Warning, Tool Box*	1
1296823	Decal – Warning, Pipe Cradle*	2
1296824	Decal – Warning, Panel Carrier*	2
1297194	Label – Outrigger Load, GS-3232*	4
1297195	Label – Transport Diagram	2
1297433	Label – Electrocutation Hazard	3
1298544	Danger – Tip-over, Fall, Crush Hazard, Outrigger*	1
1298833	Danger – Tip-over Hazard, Batteries	1
1301158	Label – Fault Codes	1
1305535	Label – Wheel Load, E-drive, GS-2032*	4
1305536	Label – Wheel Load, E-drive, GS-2632*	4
1305537	Label – Wheel Load, E-drive, GS-3232*	4
1311621	Instructions – Battery Connection Diagram, Lithium	1
1311622	Danger – Tip-over Hazard, Batteries, Lithium	1
T107029	Danger/Instructions – Brake Release Safety and Operation, Hydraulic Drive*	1
T112804	Label – Ground Control Panel	1

* These decals are model, option or configuration specific.

 Shading indicates decal is hidden from view, i.e. under covers

Operating Instructions



Do Not Operate Unless:

- You learn and practice the principles of safe machine operation contained in this operator's manual.
 - 1 Avoid hazardous situations.
 - 2 Always perform a pre-operation inspection.
 - 3 Always perform function tests prior to use.
 - 4 Inspect the workplace.
 - 5 **Only use the machine as it was intended.**

Fundamentals

The Operating Instructions section provides instructions for each aspect of machine operation. It is the operator's responsibility to follow all the safety rules and instructions in the operator's, safety, and responsibilities manuals.

Using the machine for anything other than lifting personnel, along with their tools and materials, to an aerial work site is unsafe and dangerous.

Only trained and authorized personnel should be permitted to operate a machine. If more than one operator is expected to use a machine at different times in the same work shift, they must all be qualified operators and are all expected to follow all safety rules and instructions in the operator's, safety, and responsibilities manuals. That means every new operator should perform a pre-operation inspection, function tests, and a workplace inspection before using the machine.

Operating Instructions

Lift Tools Pipe Cradle Operation

- 1 Place the load so that it rests in both Lift Tools Pipe Cradles. The length of the load should be centered between the Lift Tools Pipe Cradles, parallel with and evenly distributed along the length of the platform, with the center of gravity of the load on the main deck.
- 2 Secure the load to each Lift Tools Pipe Cradle. Pass the nylon strap over the load. Depress the buckle and slide the strap through. Tighten the strap.
- 3 Gently push and pull on the load to make sure the Lift Tools Pipe Cradles and load are secure.
- 4 Keep the load secured when the machine is moving.

The Lift Tools Pipe Cradles assembly weighs 25 lbs/11.4 kg.

Maximum Lift Tools Pipe Cradles Capacity

GS-1530, GS-1532, GS-1930, GS-1932, GS-1932 XH, GS-2032	215 lbs 97.5 kg
GS-2632, GS-3232	100 lbs 45.4 kg
GS-2046, GS-2646, GS-2646 XH	445 lbs 202.0 kg
GS-3246, GS-3246 XH, GS-4046	100 lbs 45.4 kg

- ▲ Tip-over hazard. The weight of the Lift Tools Pipe Cradle assembly and the load in the Lift Tools Pipe Cradle assembly will reduce the rated platform capacity of the machine and must be factored into the total platform load.
- ▲ Tip-over hazard. The weight of the Lift Tools Pipe Cradle assembly and the load in the Lift Tools Pipe Cradle may limit the maximum number of occupants in the platform.

Large pipe cradle capacity: 6" Maximum diameter. See load chart for weight capacity.

Do not operate unless you are adequately instructed and are aware of all hazards associated with lifting pipes.

Do not cause a horizontal force or side load to the machine by raising or lowering a fixed or overhanging load.

Do not transport the unit with Lift Tools Pipe Cradles installed. Remove entire assembly before transporting the unit.

Transport and Lifting Instructions

Lifting Instructions, GS-30

Fully lower the platform. Be sure the extension deck, controls and component trays are secure. Remove all loose items on the machine.

Determine the center of gravity of your machine using the table and the picture on this page.

Attach the rigging only to the designated lifting points on the machine. There are two 2.5 cm holes on the front of the machine and two holes in the ladder for lifting.

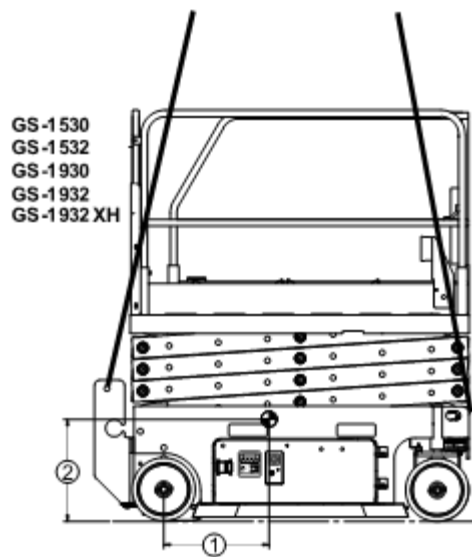
Adjust the rigging to prevent damage to the machine and to keep the machine level.

Center of Gravity Table (Actual dimensions may vary due to machine configuration, options, and manufacturing tolerances)

Lifting Instructions

Model	X Axis	Y Axis
GS-1530	26.3 in 66.8 cm	21 in 53.3 cm
GS-1532	26.2 in 66.5 cm	21.0 in 53.3 cm
GS-1930	23.8 in 60.4 cm	20.6 in 52.3 cm
GS-1932	26.2 in 66.4 cm	21.8 in 55.4 cm
GS-1932XH	22.0 in 55.9 cm	19.1 in 48.5 cm

Ladder Lifting Points (qty 2) Chassis Lifting Points (qty 2)



1	X Axis
2	Y Axis

CLICK HERE TO **DOWNLOAD** THE COMPLETE MANUAL

- Thank you very much for reading the preview of the manual.
- You can download the complete manual from: www.heydownloads.com by clicking the link below



- Please note: If there is no response to CLICKING the link, please download this PDF first and then click on it.

CLICK HERE TO **DOWNLOAD** THE COMPLETE MANUAL