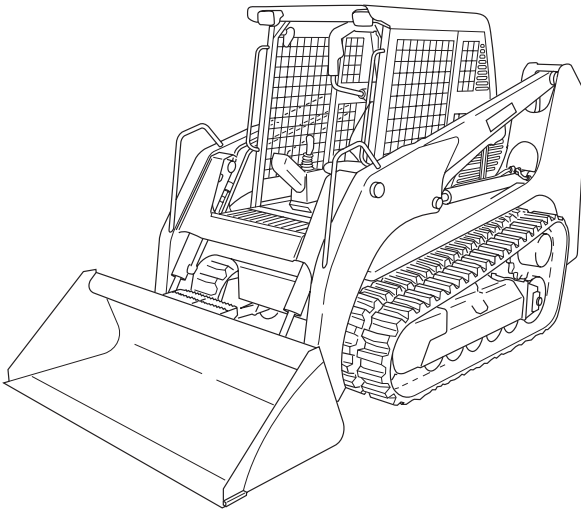


**CTL60
CTL70
CTL80**

**Compact
Track Loader**



OPERATOR'S MANUAL

Form No.
908305
English

CEHL[®]

CLICK HERE TO **DOWNLOAD** THE COMPLETE MANUAL

- Thank you very much for reading the preview of the manual.
- You can download the complete manual from: www.heydownloads.com by clicking the link below



- Please note: If there is no response to CLICKING the link, please download this PDF first and then click on it.

CLICK HERE TO **DOWNLOAD** THE COMPLETE MANUAL

**Never remove safety equipment**

- Make sure all protective guards, canopies, doors, etc., are in place and secure. Repair or replace damaged components before operating the machine.



- Know how to use the safety bar, seat belt and other safety equipment and use them properly.
- Never remove any safety equipment except for service. Keep all safety equipment in good operating condition.

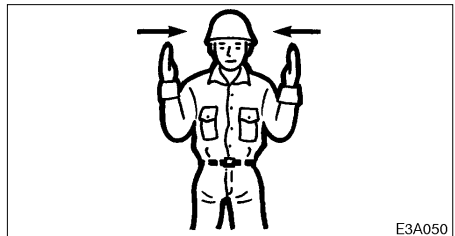
**Crush Hazard
FOPS Limitations**

Various classes and sizes of off-road equipment operate in a wide variety of applications and environmental conditions. With the intention of providing operators with reasonable protection from falling objects, two levels of FOPS (Falling-Object Protective Structure) acceptance criteria have been developed based on end use:

- Level 1 protection from falling bricks, small concrete blocks and hand encountered in operations such as highway maintenance, landscaping and other construction site services.

- Level 2 protection from falling trees or rocks for machines involved in site clearing, overhead demolition or forestry.

This machine is equipped with a Level 1 FOPS as standard equipment. DO NOT use this machine in an application that may involve the hazards of falling trees or rocks. If Level 2 FOPS protection is required in your application, contact your dealer or the manufacturer concerning the possible availability of such protection.

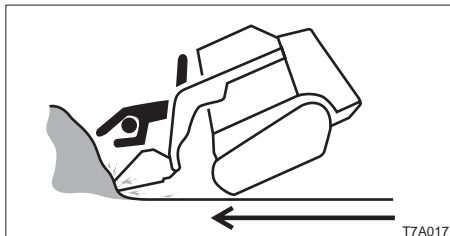
Use a signal person and flagman

Know and use the hand signals required for particular jobs and make sure who has the responsibility for signaling.

- All personnel must fully understand all the signals.
- The operator shall respond to signals only from the appointed signal person, but shall obey a stop signal at any time from anyone.
- The signal person must stand in a clearly visible location when giving signals.

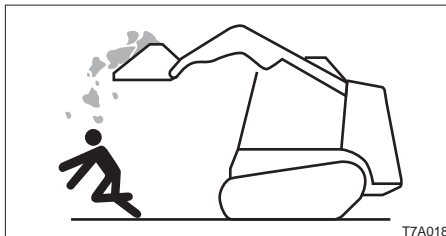


Do not drive into materials at high speed



Driving at high speed into the materials you are handling can lead to your body bumping into the machine or being thrown from the machine. Check the conditions surrounding the area in front of the material you are handling and work at low speeds.

Do not carry the bucket over the heads of people

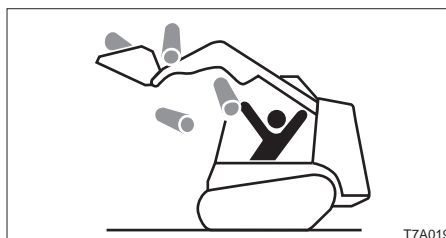


Carrying the bucket over the heads of people entails the danger of the load spilling or the sudden dropping of the bucket.

Operate on snow or ice with extra care

- When traveling on snow or frozen surfaces, keep the machine travel speed down and avoid accelerating, stopping or changing directions abruptly.
- Remember that the road shoulder, fences, etc., may be buried in the snow and not visible.
- Lower the bucket when parked on unsure ground conditions.

Caution against the falling of an unstable load



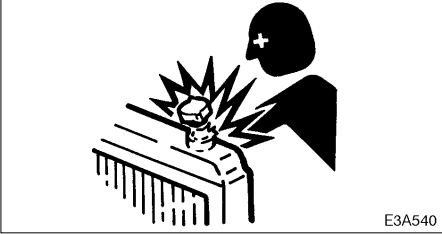
Unstable loads such as round items, cylindrical items, and stacked plates entail the possibility of falling from the bucket. When handling unstable loads, operate carefully so as not to raise the bucket too high or tilt too far backward.



SAFETY

Maintenance Precautions

Be careful with hot cooling systems

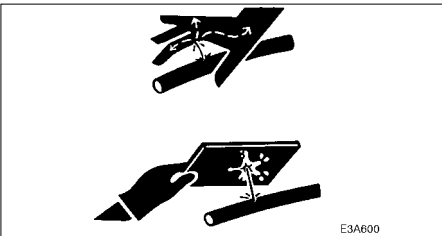


Do not remove the radiator cap or drain plugs when the coolant is hot. Stop the engine, let the engine and radiator cool and loosen the radiator cap or drain plugs slowly.

Be careful with fluids under pressure

Pressure can be maintained in the hydraulic circuit long after the engine has been shut down.

- Release all pressure before working on the hydraulic system.



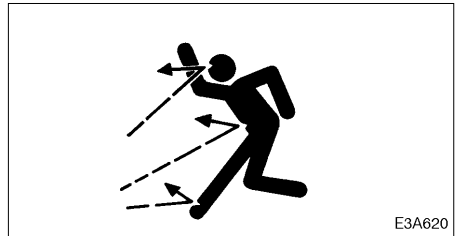
- Hydraulic fluid under pressure can penetrate the skin or eyes and cause injury, blindness or death. Fluid escaping from a small hole can be almost invisible. Wear a safety goggles and heavy gloves and use a piece of cardboard or wood to search for suspected leaks. If fluid is injected into the skin, it must be removed within a few hours by a doctor familiar with this type of injury.

Release all pressure before working on the hydraulic system

Oil may spurt out if caps or filters are removed or pipes disconnected before releasing the pressure in the hydraulic system.

- When removing plugs or screws or disconnecting hoses, stand to the side and loosen slowly to gradually release the internal pressure before removing.

Be careful with grease under pressure



The track adjuster contains highly pressurized grease. If the tension is adjusted without following the prescribed procedure, the grease discharge valve may fly off, resulting in injury.

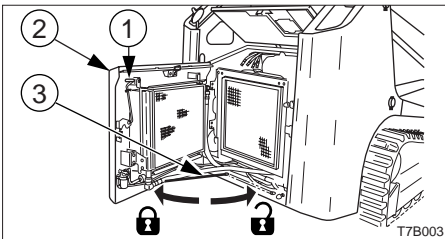
- Loosen the grease discharge valve slowly.
- Do not put your face, arms, legs or body in front of the grease discharge valve.
- If no grease is expelled when grease discharge valve is loosened, there is a problem. Contact your nearest service outlet for repairs. DO NOT disassemble, as this is very dangerous.



Rear Door



- When opening the rear door, open it firmly to the locked position.
- When opening and closing the rear door, be careful not to get your hands or other parts of your body caught.



Opening

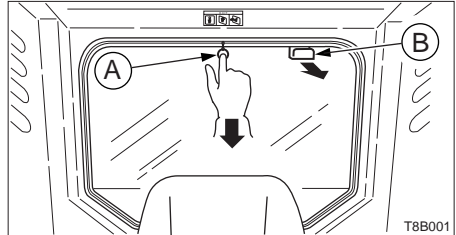
1. Open the engine hood.
2. Lift the lever (1) and open the rear door (2).
3. Release the stay (3), then insert and fix it into the stay hole of the rear door (2).

Closing

1. Support the rear door (2) by hand, remove stay (3), and fix it to the original position.
2. Close the rear door (2) and press it until a click is heard at the front.

Emergency Exit

If you should become trapped inside the cab, remove the rear window to get out.



There are two ways to remove the rear window.

In case of emergency

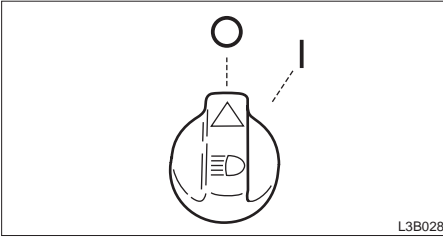
1. Kick off the rear window. Note that the glass may break. Be careful not to get injured.

In case of need

1. Pull off ring (A) and remove the tip of the rubber wedge.
2. Grasp the tip, pull, and remove the entire rubber wedge.
3. Pull inside knob (B).



Light Switches



When this switch is turned while the starter switch is at ON, the lights turn on as follows:

Front light switch

O Off

I Meter light and front lights turn on.

Tail light switch

O Off

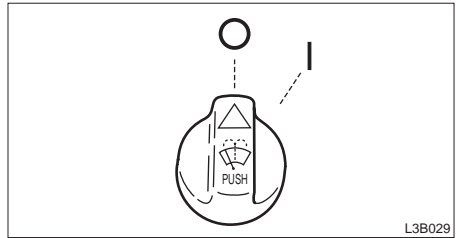
I Tail lights turn on.

Wiper Switches (Option)

IMPORTANT: If no washer fluid is discharged, do not operate the washer. Doing so may damage the pump.

IMPORTANT: Operating the wiper with no moisture on the windshield will scratch the glass. Apply water or washer fluid when operating the wiper.

IMPORTANT: In cold seasons, the wiper blade may freeze to the glass. Operating the wiper forcibly may damage the wiper motor.



Front wiper switch

O Off

I Wiper operates.

PUSH Washer fluid is squirted from the nozzle while pressed, and stops when released.

Rear wiper switch

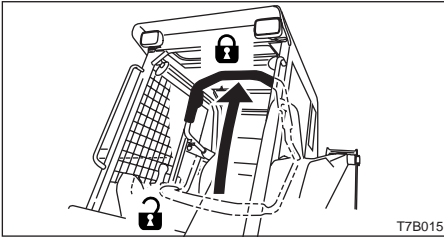
O Off

I Wiper operates.

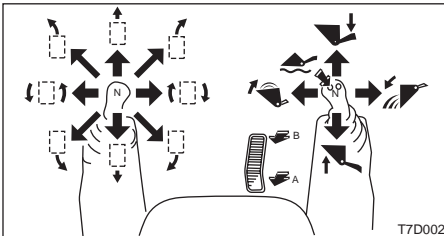
PUSH Washer fluid is squirted from the nozzle while pressed, and stops when released.

**Before Starting the Engine**

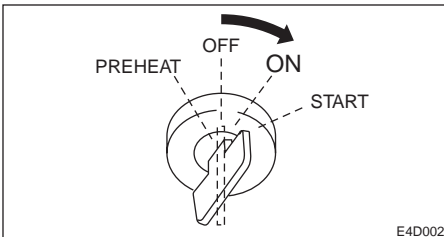
1. Adjust the seat for a comfortable operating position.
2. Fasten the seat belt.



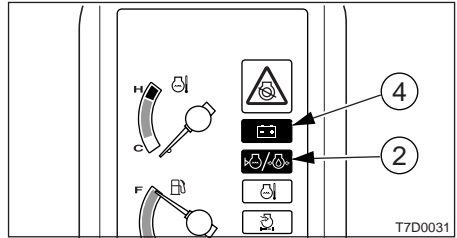
3. Check that the safety bar is in the locked position.



4. Check that the control levers and pedals are in the neutral position.



5. Insert the key into the starter switch, turn it to the ON position, then perform the following inspection:



- All the warning lamps flash and an alarm is sounded for 2 seconds. The meters also start functioning. After 2 seconds, only the battery charge warning lamp (4) and engine oil pressure/coolant level warning lamp (2) flash, and the other lamps turn off.
- Turn the light switch to check that the front light, tail lights and meter light turn on.
- Check the fuel level.

If a lamp does not light or the alarm is not sounded, the bulb may be burnt out or a wire may be damaged. Contact a Gehl sales or service outlet for repairs.

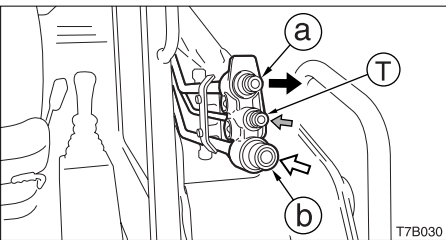
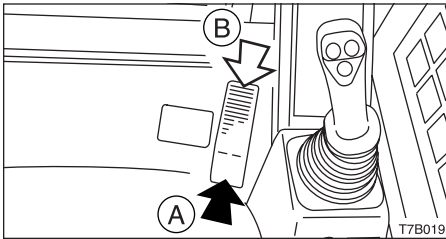
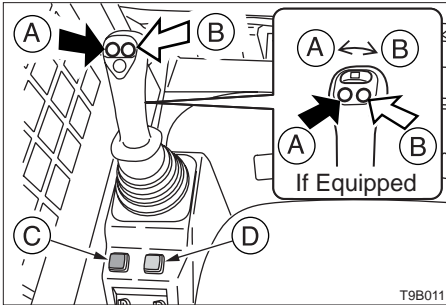


Operating the Auxiliary Hydraulics

Use this to operate a breaker, angle bucket or other attachment.

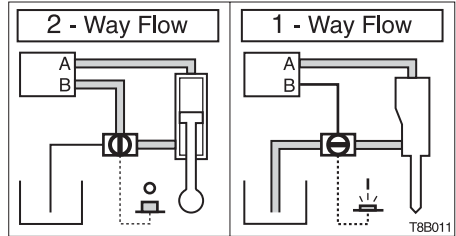
Two methods of operation are permitted: operation with the auxiliary hydraulic switches and operation with the auxiliary pedal.

Operating the Auxiliary Hydraulic Switches / the Auxiliary Pedal



- ➔ To deliver hydraulic oil to port (a):
Depress (A).
- When using a hydraulic breaker or other 1-way flow attachment.
- ⇨ To deliver hydraulic oil to port (b):
Depress (B).

When using a hydraulic breaker or other 1-way flow attachment



Change the direction of the hydraulic oil flow by setting Flow selector switch (C) ON to return the oil in the (b) port line directly to the hydraulic tank.

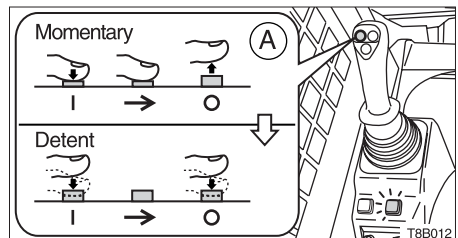
Refer to page 47 "Flow Selector Switch".

When using a detent mode switch (D).

IMPORTANT: Please note that operation over long periods with Detent mode switch pressed will cause the hydraulic oil temperature to rise and will shorten the life of the hydraulic units.

A press of Detent mode switch (D) lights the orange lamp and the auxiliary hydraulic switch (A) changes to detent mode.

Detent mode



One press of the auxiliary hydraulic switch (A) sets it to ON and one more press sets it to OFF. There is no need to continue pressing the switch.

Refer to page 48 "Detent Mode Switch".

CLICK HERE TO **DOWNLOAD** THE COMPLETE MANUAL

- Thank you very much for reading the preview of the manual.
- You can download the complete manual from: www.heydownloads.com by clicking the link below



- Please note: If there is no response to CLICKING the link, please download this PDF first and then click on it.

CLICK HERE TO **DOWNLOAD** THE COMPLETE MANUAL



Preparing for Cold Weather

In cold weather, it may be difficult to start the engine and the coolant may freeze. Make the preparations described below.

Changing the Fuel and Lubricant

Change the fuel, hydraulic oil and engine oil to types suited for cold conditions.

Refer to page 90 "Fuel and Lubricant Chart".

Engine Coolant



The coolant is combustible. Keep flames away.

Use long-life coolant (antifreeze) and tap water for the engine coolant.

Supplement: New machines are delivered with JIS Type 2 long-life coolant (antifreeze) at a concentration of 50%.

Refer to page 90 "Fuel and Lubricant Chart".

Battery

As the temperature drops, the battery performance decreases.

Inspect the battery. If the charge is low, contact a Gehl sales or service outlet to have the battery charged.

Refer to page 109 "Inspecting the Battery Fluid Level and Replenishing".

Cautions after Completing Operations

Heed the following in order to prevent dirt, water, or other objects stuck on the machine as well as the lower body from freezing:

- Remove any dirt or water from the body.
In particular, water droplets on the hydraulic cylinder rod surfaces could freeze, and if dirt enters into the seals along with this, the seals could break.
- Park the machine on a dry, hard surface. If no appropriate place can be found, put boards down and park the machine on them.
- Drain any water from the fuel tank to prevent freezing.
Refer to page 110 "Draining the Fuel Tank".
- To prevent decreased battery performance, place a cover over the battery or remove it from the machine and store it in a warm place.
Also add battery fluid before starting the next morning. If battery fluid is added after completing operations, the distilled water may not mix, resulting in freezing.

After Cold Weather is Over

Perform the following after cold weather is over:

- Change the fuel and the oils for the different devices with those specified on the Fuel and Lubricant Chart.
Refer to page 90 "Fuel and Lubricant Chart".
- When using one-season type antifreeze coolant, completely drain the antifreeze coolant, carefully clean the inside of the coolant system, then add tap water.
Refer to page 118 "Cleaning the Engine Cooling System".

**Do not clean parts with fuel.**

Do not use fuel to clean parts. Use a non-combustible cleaning agent.

Keep dirt out.

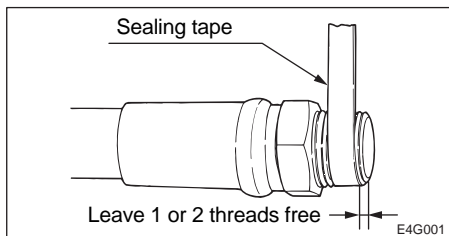
When mounting and removing parts, do so in a place where there is no dust, clean the working area and the part, and keep dirt out.

Clean mounting surfaces.

When mounting and removing parts, be sure that the surfaces of contact of the parts are clean. If the sealing grooves of the surface of contact are damaged, consult a Gehl sales or service outlet.

Seals and split pins

- Replace removed seals and split pins with new ones.
- When mounting, be careful not to damage or twist the seal.

Sealing tape

- When wrapping sealing tape around plugs, etc., remove any old sealing tape from the threads and clean the threads.
- Wrap the sealing tape tight, leaving 1 or 2 threads at the tip free.

Disposing of wastes

- Collect spent fluids from the machine in containers. Disposing of wastes irresponsibly damages the environment.
- Dispose of oil, fuel, cooling water, coolant, filters, batteries and other harmful substances as prescribed by law.

Check after maintenance

- Gradually increase the engine speed from a low idle to maximum speed and check that there is no oil or water leaking from serviced parts.
- Operate all the control levers and check that the machine is operating properly.

Cautions on handling of battery cables

- Disconnect the battery cables (+,-) before working on the electrical system or doing any welding.
Remove the negative (-) battery cable first. When reconnecting the battery, connect the negative (-) battery cable last.
- Do not disconnect the battery cables while the engine is running. Doing so could damage the electronic circuitry of the alternator and other parts.



17. Start the engine, run it at low idle for about 3 minutes, then stop it.
18. After about 20 minutes, inspect the oil level.

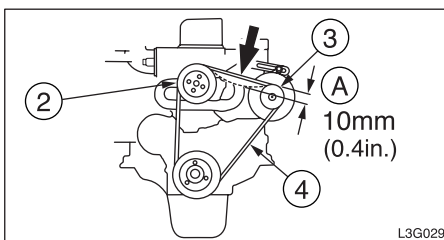
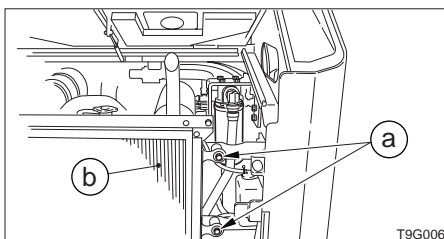
Inspecting and Adjusting the Fan Belt



Stop the engine and allow the machine to cool down before performing inspection and maintenance.

- The engine, muffler, radiator, hydraulic lines, sliding parts and many other parts of the machine are hot directly after the engine is stopped. Touching these parts will cause burns.

Inspection



1. Open the rear door.
2. Remove the bolts (a) and open the radiator (b).
3. Press at the center of the fan pulley (2) and alternator pulley (3) and check the tension (about 10 kg or 22 lb.).
The slack (A) should be about 10 mm (0.4 in.).
4. Inspect the fan belt (4) and replace it if:
 - there are cuts or cracks.



Replacing the Hydraulic Oil Return Filter

Refer to page 107 "Replacing the Hydraulic Oil Return Filter".

Replacing the Line Filter

Refer to page 110 "Replacing the Line Filter".



Tilting Up the ROPS

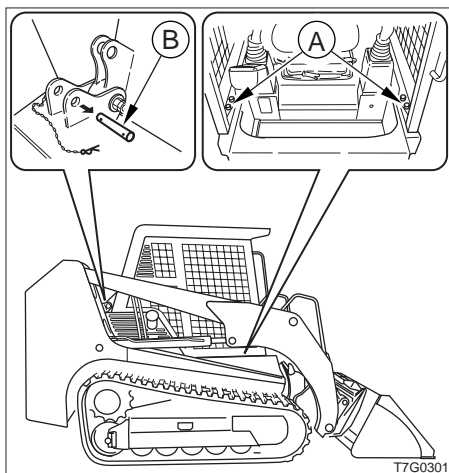
For inspection and maintenance, the ROPS is designed so that it can be tilted up.



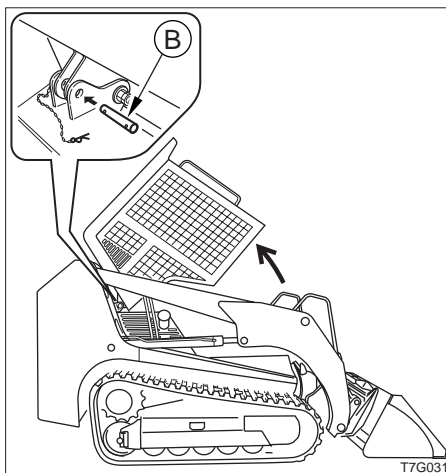
- **Raising or lowering the ROPS while the engine is running may cause the machine to move, and cause serious injury or death. Lower the working equipment to the ground and stop the engine before raising or lowering the ROPS.**
- **When the ROPS is tilted up, support it firmly with the stopper to prevent it from falling.**

Raising (Tilt up)

1. Select a firm, level surface, lower the working equipment to the ground, and stop the engine.
2. Set the safety bar to the lock position.



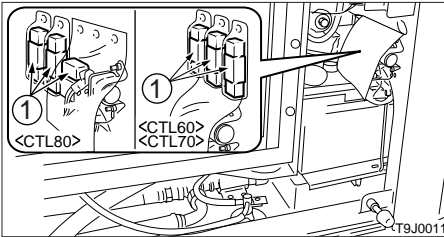
3. Remove a R-pin and remove the stopper pin (B).
4. Remove the lock bolts (A).
5. Slowly raise the ROPS.



6. Insert the stopper pin (B) into the body's holder and insert a R-pin into the stopper pin's hole to fasten it in place. If you need to run the engine while the ROPS is raised follow these steps.
7. Make sure that all levers and pedal are in neutral positions.
8. Push the throttle lever to the low idling position.
9. Start the engine.
10. Be sure to stop the engine after inspection and maintenance.

Lowering

1. Remove the stopper pin (B).
2. Lower the ROPS.
3. Tighten the lock bolts (A).
4. Reinsert the stopper pin (B) into the body's holder.

**Inspecting the Fusible Link**

If the power is not switched on after turning the starter switch to the ON position, the cartridge type fusible links (1) might be blown open. Open the rear door and inspect. If the fusible link is blown, please contact your dealer.

Supplement: A fusible link is a large piece of fuse wiring which is mounted in a circuit which carries a large electrical current. Link a regular fuse, the fusible link protects the electrical parts and wiring from damage due to abnormally large currents.

**CTL70****MASS**

Machine mass kg (lb.) (not including operator)	Rubber crawlers	4275 (9425)
---	-----------------	-------------

PERFORMANCE

Bucket capacity m ³ (cu.ft.) (standard bucket)	Heaped	0.458 (16.17)	
	Struck	0.335 (11.8)	
Travel speed km/h (mph)	Rubber crawlers	1st	7.3 (4.54)
		2nd	10.4 (6.46)
Gradeability (degrees)		30	
Ground pressure kPa (psi)	Rubber crawlers	28.2 (4.1)	
Noise level <For EU> dB (A)	Sound-power level	L _{WA} 105	
	Sound-pressure level	L _{pA} 92	

ENGINE

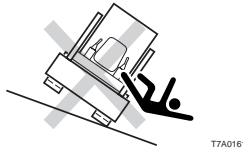
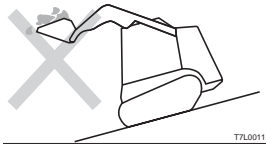
Manufacturer and model	ISUZU 4JG1T
Rated output kW / min ⁻¹ (hp / rpm)	60.3/ 2500 (80.9 / 2500)
Displacement ml (cu.in.)	3059 (186.7)
Starter	V - kW 12 - 2.2
Alternator	V - kW 12 - 0.6
Battery	V - A·h 12 - 80

**Precautions on Operating Attachments**

Long attachments reduce machine stability. When traveling down steep slopes or turning on slopes, the machine may lose its balance and tip over.

The following operations are particularly dangerous. Do not perform them.

- **Traveling down slopes with the attachment lifted**
- **Traveling across slopes**
- **Turning on slope**



- **When heavy attachments are installed, the overrun (the distance from where the operation to stop traveling is performed until traveling stops completely) increases and mistakes in judgment may result in the attachment hitting surrounding objects. Allow for plenty of room between the attachment and obstacles. In addition, the natural drop (the gradual dropping of the attachment under its own weight when it is stopped in midair) also increases when heavy attachments are installed.**
-

CLICK HERE TO **DOWNLOAD** THE COMPLETE MANUAL

- Thank you very much for reading the preview of the manual.
- You can download the complete manual from: www.heydownloads.com by clicking the link below



- Please note: If there is no response to CLICKING the link, please download this PDF first and then click on it.

CLICK HERE TO **DOWNLOAD** THE COMPLETE MANUAL