

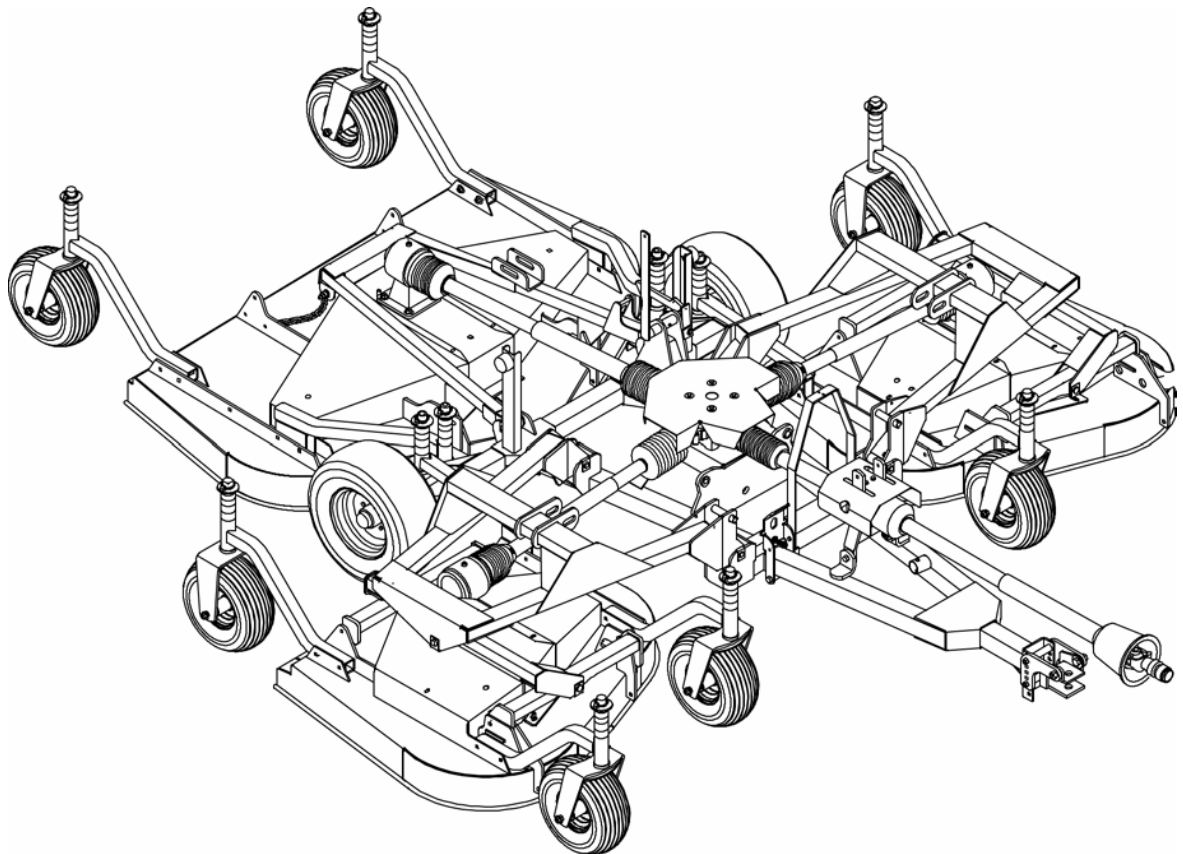
GROOMING MOWERS

FM1012R

FM1015R

FM1017R

15-Digit Serial Numbers WDFM10XXR239170 & Above, and
13-Digit/17-Digit XF Serial Numbers up to 1XFFM10XAB0000105
Revision Effective 7/2007



CLICK HERE TO **DOWNLOAD** THE COMPLETE MANUAL

- Thank you very much for reading the preview of the manual.
- You can download the complete manual from: www.heydownloads.com by clicking the link below



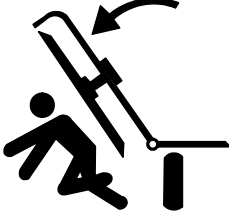
- Please note: If there is no response to CLICKING the link, please download this PDF first and then click on it.

CLICK HERE TO **DOWNLOAD** THE COMPLETE MANUAL

SAFETY & INSTRUCTIONAL DECALS
ATTENTION! BECOME ALERT! YOUR SAFETY IS INVOLVED!
Replace Immediately If Damaged!


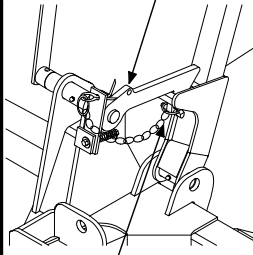
(Safety Decals continued from previous page)

6 - WP38421

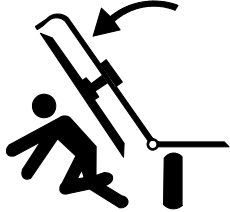
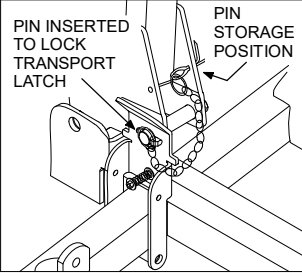
⚠ WARNING	
	<p style="text-align: center;">RAISED MOWER CAN DROP AND CRUSH</p> <ul style="list-style-type: none"> ■ Before working underneath side mowers, lower side mowers and securely block up. See manual. ■ Blocking up prevents mower dropping from transport latch release or failure, hydraulic leak down or hydraulic system failure. <p style="text-align: center;">FAILURE TO FOLLOW INSTRUCTIONS CAN RESULT IN SERIOUS INJURY OR DEATH.</p>

38421-A

7 - WP44650

⚠ WARNING		
	<p style="text-align: center;">RAISED MOWER CAN DROP AND CRUSH</p> <ul style="list-style-type: none"> ■ Before working underneath rear mower: <ul style="list-style-type: none"> ■ Raise rear mower to transport position. ■ Insert pin to lock transport latch. ■ Securely block up rear of mower. See manual. ■ Blocking up prevents mower dropping from transport latch release or failure, hydraulic leak down, or hydraulic system failures. <p style="text-align: center;">FAILURE TO FOLLOW INSTRUCTIONS CAN RESULT IN SERIOUS INJURY OR DEATH.</p>	 <p style="font-size: x-small;">PIN STORAGE POSITION</p> <p style="font-size: x-small;">PIN INSERTED TO LOCK TRANSPORT LATCH</p>

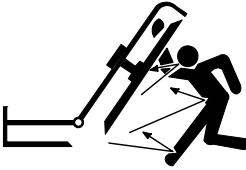
44650

⚠ WARNING		
	<p style="text-align: center;">RAISED MOWERS CAN DROP AND CRUSH</p> <ul style="list-style-type: none"> ■ Keep away. Do not go underneath. ■ When raised, insert pins to lock transport latches. ■ Lower after transport. <p style="text-align: center;">FAILURE TO FOLLOW INSTRUCTIONS CAN RESULT IN SERIOUS INJURY OR DEATH.</p>	 <p style="font-size: x-small;">PIN INSERTED TO LOCK TRANSPORT LATCH</p> <p style="font-size: x-small;">PIN STORAGE POSITION</p> <p style="font-size: x-small;">SIDE MOWER TRANSPORT LATCHES</p>

44651

11 - WP44651

17 - WP44656

⚠ WARNING	
	<p style="text-align: center;">RAISED MOWERS EXPOSE BLADES AND INCREASE THROWN OBJECT HAZARDS</p> <ul style="list-style-type: none"> ■ Only raise for transport. ■ Stop mowers before raising. <p style="text-align: center;">FAILURE TO FOLLOW INSTRUCTIONS CAN RESULT IN SERIOUS INJURY OR DEATH.</p>

44656

8 - WP18866

⚠ WARNING
<p>DO NOT EXCEED PTO SPEED OF</p> <p style="font-size: 2em;">540 RPM</p> <p>PTO speeds higher than 540 RPM can cause equipment failure and personal injury.</p>

18866-D

(Safety Decals continued on next page)

<u>REF</u>	<u>DESCRIPTION</u>	<u>FREQUENCY</u>
1	Caster Wheel Pivots	8 Hours
2	Caster Wheel Hubs	8 Hours
3	Blade Spindles	8 Hours
4	Gearbox (Fill 1/2 full with SAE 90W gear lube)	Check Daily
5	Rear U-Joint	8 Hours
6	Front U-Joint	8 Hours
7	Wing Pivot	8 Hours
8	Slip Joint Grease Fitting	8 Hours
9	Shield Bearing	8 Hours
10	Carrier Bearing	8 Hours

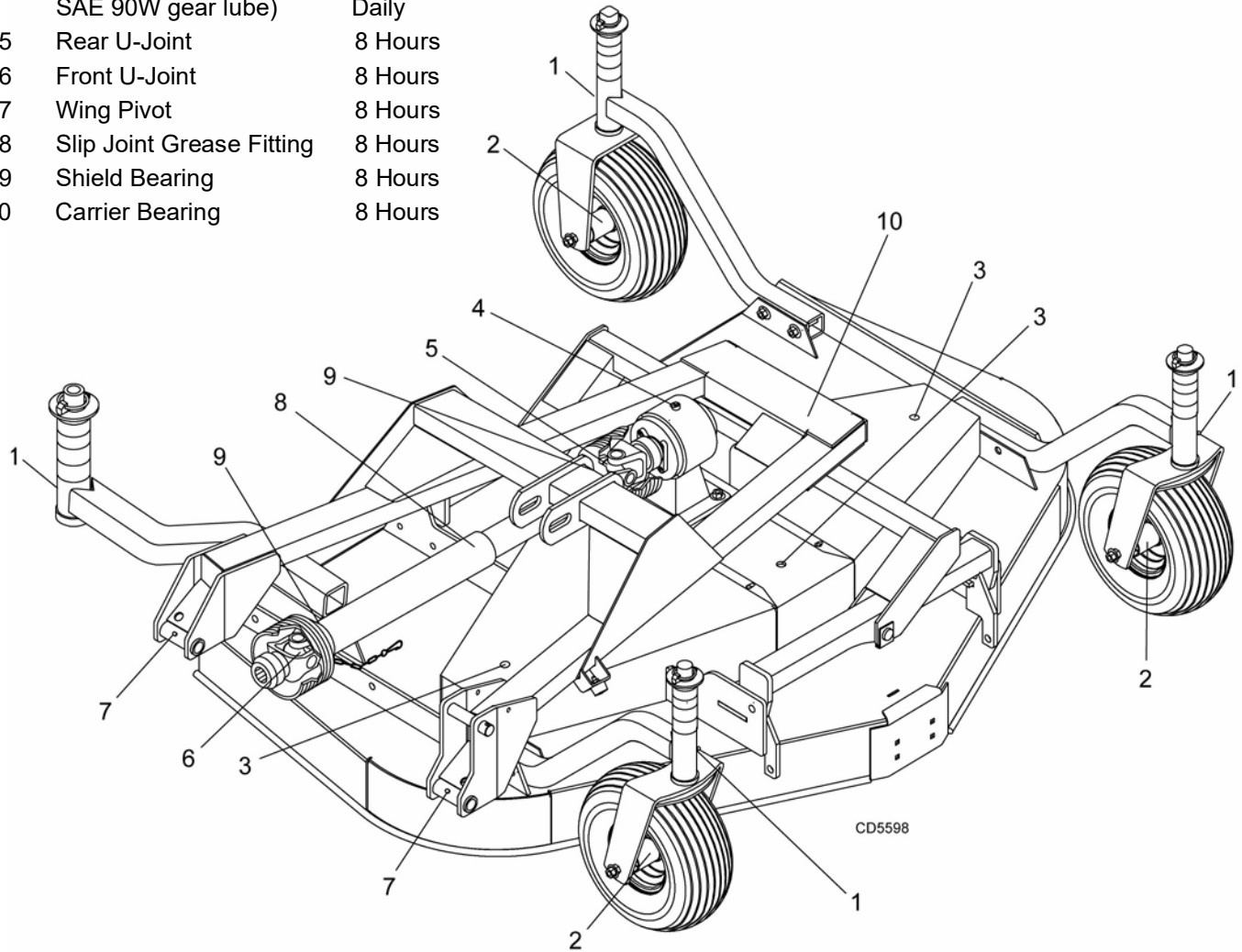


Figure 8. Lubrication Points - Deck

BELT

Belt Replacement

One of the major causes of belt failure is improper installation. Before installing a new belt, check the following:

1. Check pulley shafts and bearings for wear.
2. Check pulley grooves for cleanliness.
3. Make sure spindles turn freely and without wobble.

If grooves require cleaning, moisten a cloth with a non-flammable, non-toxic degreasing agent or commercial detergent and water.

Avoid excessive force during installation. Do not use tools to pry belt into pulley groove. Do not roll belt over pulleys to install. This can cause hidden damage and premature belt failure.

Belt Installation

WING DECK - FM1012R

CAUTION

■ Use care when installing or removing belt from spring-loaded idler. Springs store energy when extended and, if released suddenly, can cause personal injury.

diameter. Be sure not to damage the seal lip. Press in housing so that seal is recessed.

8. Insert protective washer (8) by hand. Install snap ring (21) and position it together with dual lip seal (18) by pressing it into position. Verify that snap ring is seated correctly.
9. Press bearing (7) into the housing, using a round tube of the correct diameter and a hand press. Secure with shim (13) and snap ring (10).
10. Secure snap ring (11) on input shaft (3) if not already secure.
11. Place gear (1) through top of housing and align gear (1) and gear (5) so that gear teeth are a match.
12. While holding gear (1) in place, slide input shaft (3) through gear (1) and bearing (7). Align splines on shaft (3) and gear (1).
13. Slide spacer (12) over input shaft (3) and press bearing onto input shaft (3), using a round tube of the correct diameter and a hand press.
14. Slide shim (13) over input shaft (3) and secure with snap ring (10).
15. Check input shaft end float by moving the input shaft (3) by hand. If end float is higher than 0.012" (0.305 mm), insert shim between input shaft (3) and rear bearing (7). Repeat until end float is less than 0.012" (0.305 mm). Check rotational torque by hand. The torque should be less than 2.2 lbs.-inch (0.25 N-m).
16. Check that the gear backlash is between 0.006" and 0.016" (0.152 mm - 0.406 mm). You should not have to adjust the backlash.
17. Press in input oil seal (19), using tube of correct diameter. Be careful not to damage seal lip.
18. Press oil cap (20) on to cover the rear of housing, using a tube of the correct diameter.
19. Check gearbox housing for leaks by plugging all holes except one. Apply 4 psi (28 kPa) compressed air and immerse the gearbox in water to verify that there are no leaks.
20. Remove gearbox from water and dry off with compressed air. Add SAE 80W or 90W EP oil until it runs out of side level hole. Tighten all plugs.

- | | |
|---------------------------|-----------------------------|
| 1. Crown gear | 18. Oil seal (40 x 80 x 12) |
| 2. Gearbox housing | 19. Oil seal (35 x 72 x 10) |
| 3. Input shaft | 20. Cap |
| 4. Output shaft | 21. Snap ring |
| 5. Gear pinion | 22. Top Cover |
| 6. Bearing | 23. Bolt M8 x 14mm |
| 7. Bearing | 24. Breather level plug |
| 8. Protective flat washer | 25. Cotter pin |
| 9. Cotter pin | 26. Bearing |
| 10. Snap ring | 27. Ball Bearing |
| 11. Snap ring | |
| 12. Spacer | |
| 13. Shim kit | |
| 14. Castle nut | |
| 15. Castle nut M24 x 2 | |
| 16. Shim Kit | |
| 17. Flat washer | |

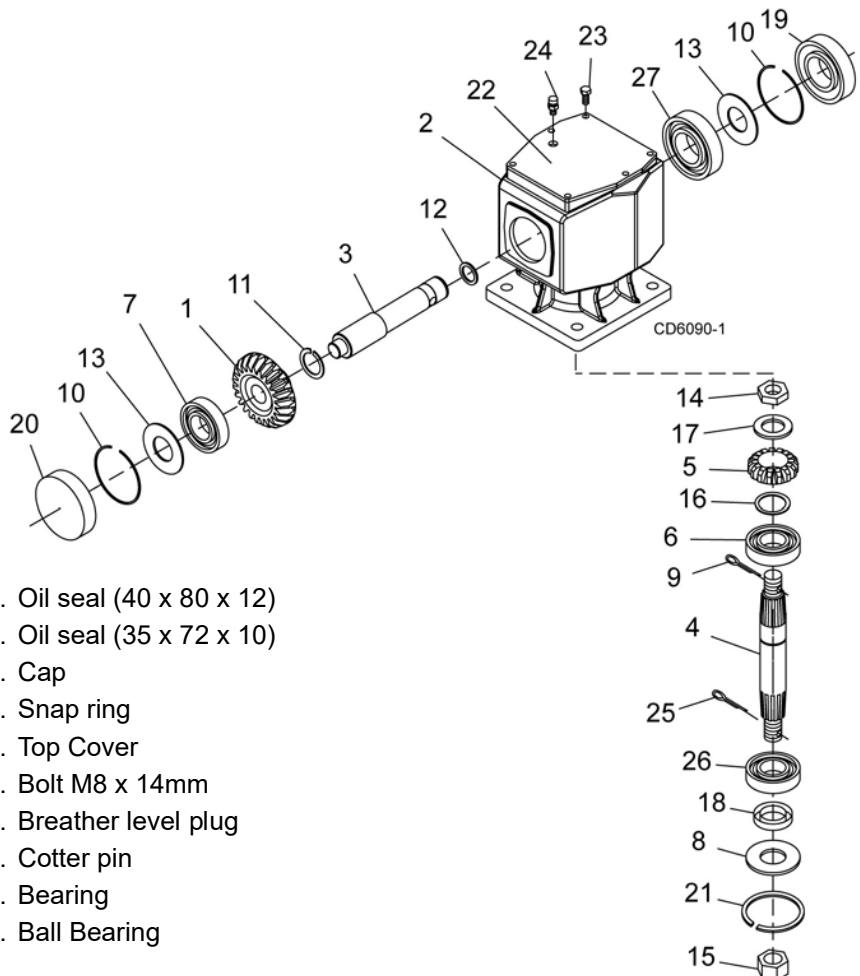
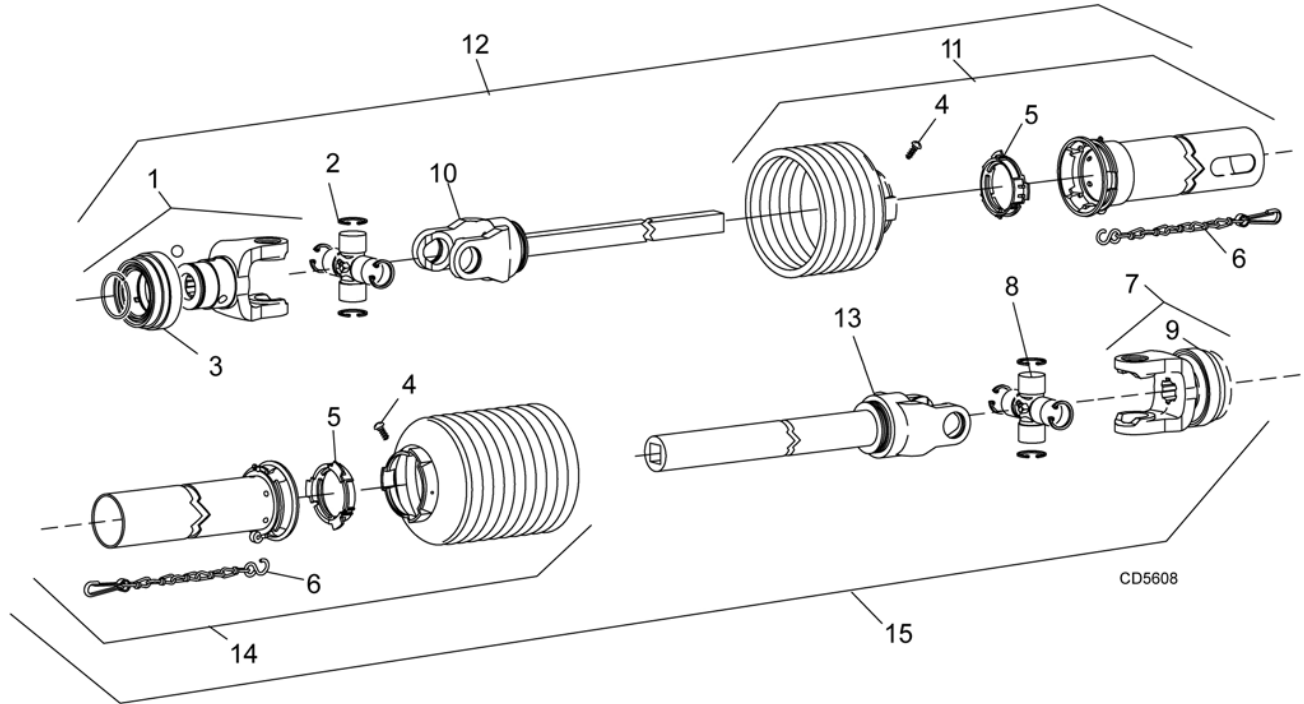


Figure 20. Gearbox Assembly

FM1012R, FM1015R, & FM1017R TRAILER ASSEMBLY

REF	PART	QTY	DESCRIPTION	REF	PART	QTY	DESCRIPTION
1	-----	1	Trailer frame	30	WP58984	2	Pin, Rear wing hinge
2	WP40803	1	Hitch, Adjustable category 1 (FM1012R SN 439028 & before) -or-	31	WP40805	1	Frame, Rear wWing
2	WP1009501	1	Hitch, Category 1 (FM1012R SN 439029 & after) -or-	32	WP44638	2	Chain, 16 Link 1/4-proof
2	WP40928	1	Hitch, Adjustable category 2 (FM1015R & FM1017R SN 439028 & before) -or-	33	WP3443	1	Hydraulic Hose holder
2	WP1009502	1	Hitch, Category 2 (FM1015R & FM1017R SN 439029 & after)	34	WP62484	1	Socket, SMV emblem
3	WP40876	2	Link, Hitch adjustment (SN 439028 & before) -or-	50		*	Screw, HHCS 5/8 NC x 7-1/2 GR5
3	WP1006689	2	Link, Hitch adjustment (SN 439029 & after)	51		*	Screw, HHCS 5/8 NC x 7 GR5
4	WP44639	2	Sleeve, .76 x 1.00 x 4.12	52		*	Screw, HHCS 3/4 NC x 2-1/4 GR5
5	WP40804	1	Lock, Rear deck	53		*	Screw, HHCS 5/8 NC x 2 GR5
6	WP40880	1	Lever, Rear deck lock release	54		*	Screw, HHCS 5/8 NC x 5 GR5
7	WP40879	2	Lock, Wing deck	55		*	Screw, HHCS 1/2 NC x 5-1/4 GR5
8	WP40938	1	Lever, Wing deck lock release	56		*	Screw, HHCS 3/8 NC x 1 GR5
9	WP19201	1	H-Frame, CV drive	57		*	Screw, HHCS 3/8 NC x 1-1/4 GR5
10	WP44641	2	Sleeve, HT .78 x 1.00 x .69	58		*	Screw, HHCS 3/8 NC x 3-1/2 GR5
11	WP31464	2	Sleeve, .38 x .63 x .34	59		*	Screw, HHCS 1/2 NC x 1-1/4 GR5
12	WP23790	1	Jack, Parking	60		*	Screw, HHCS 1/2 NC x 3 GR5
13	WP21957	3	Spring, Comp .58 x .08 x 2.4 40	61		*	Screw, HHCS 1/2 NC x 2 GR5
14	WP484	2	Sleeve, HT .63 x 1.00 x .44	62		*	Nut, Lock 5/8 NC
15	WP3502	1	Bearing, Ball	63		*	Nut, Lock 3/4 NC
16	-----	1	Housing, Bearing (Not Serviced)	64	WP11900		Nut, Flanged lock 1/2 NC
17	WP1251	1	Bearing holder w/bearing (Includes ref. 15, 16, 77, 78)	66	WP14350		Nut, Flanged lock 3/8 NC
18	WP44637	1	Shield, Front drive	67		*	Nut, Lock 3/8 NC
19	WP44626	1	Drive, Yk & shft Non-tel 2400 x 26.4	68	WP28873		Washer, Flat .75 x 1.50 x .25
20	WP19407	1	Chain, Safety 6400 lb	69	WP44640		Washer, Cup 1.04 x 2.25 x .17
21	WP62440	2	Bumper pad	70	WP34467		Washer, Flat .63 x 2.00 x .38
22	WP38264	1	Pin, Lynch chain & cotter asy	71	WP10635		Washer, Cup .63 x 1.75 x 14 Ga
23	WP40933	1	Gearbox, 4-Way splitter	72		*	Washer, Flat 3/8 standard
--	WP58815	2	Seal, Thru shaft 4-way gearbox	73		*	Washer, Flat 1/2 standard
--	WP58816	2	Seal, Wing shaft 4-way gearbox	74	WP57811	8	Washer, Flat 1/2 extra thick hardened
--	WP58817	6	Bearing, Cup & cone 4-way box	75		*	Washer, Lock 3/8
--	WP1009083	1	Plug, Vent w/Washer	76	WP1258		Bolt, Wheel 1/2 NF x 1-1/8
24	WP62626	4	Sleeve, .76 x 1.00 x 1.00	77		*	Grease fitting, 1/4-28 90° Tapered thread
25	WP44636	1	Shield, Gearbox 4-way	78	WP12128		Ring, Retaining .06 x 72 MM
26	WP1001020	2	Asy, Whl hub & axle (See page 44)	79		*	Pin, Spirol 3/8 x 1-1/2
27	WP38298G	2	Wheel & tire, 20.5 x 8.00 x 10 Gray	80		*	Grease fitting, 1/4-28 Taper thread
--	WP38475G		Wheel rim, 5-Bolt 8.00 x 10 gray	81		*	Pin, Safety 3/16
28	WP44625	1	Drive, Cmpl CV 2480, 35.8 x 48.4 (See page 50) -or-	82	WP62789		Screw, HHCS 1/2 NC x 2 FT GR5
28	WP1021100	1	Drive, Cmpl CV 35R 35.0 x 47.6 (See page 51)	83		*	Screw, HHCS 1/2 NC x 1-3/4 GR5
29	WP44627	1	Drive, Cmpl 2300, 26.8 x 43.3 (See page 48)	84	WP14139		Nut, Flanged lock 5/16 NC
				85		*	Bolt, Carriage 5/16 NC x 1/2
				86	WP1004251	1	SMV Bracket
				87	WP24611	1	Sign (SMV) Slow moving vehicle
						*	Standard Hardware, Obtain Locally

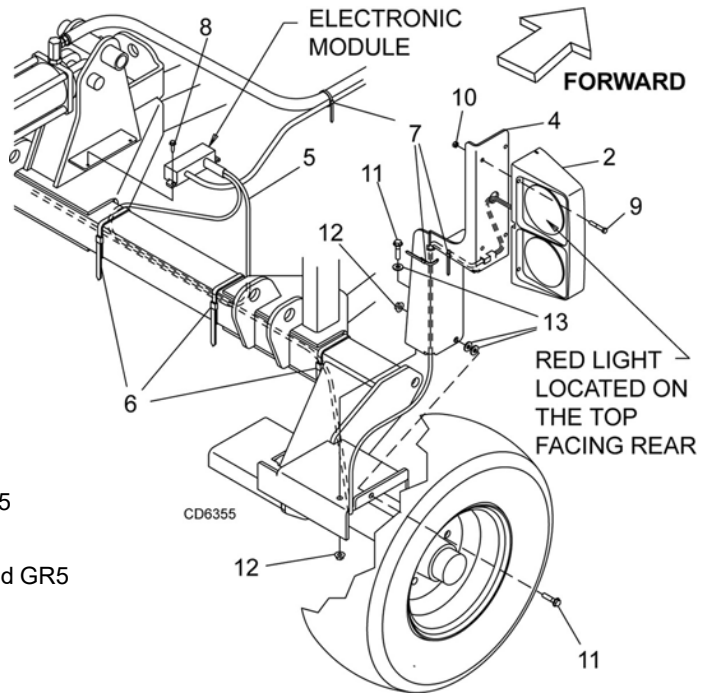
FM1012R, FM1015R, & FM1017R REAR & WING DECK DRIVES



LIGHTING KIT

REF	PART	QTY	DESCRIPTION
A	WP1004486	-	Lighting kit
1	WP90401149	1	Lighting 4 pin LH
2	WP90401150	1	Lighting 4 pin RH
3	WP1004481	1	Light bracket LH
4	WP1004480	1	Light bracket RH
5	WP1004479	1	Wire harness
6	*	-	356 mm (14 in) Tie strap
7	*	-	178 mm (7 in) Tie strap
8	*	-	#10 x 1/2 Tapping screw
9	*	-	1/4 NC x 1 Hex head cap screw GR5
10	*	-	1/4 NC Lock nut
11	WP62153	-	3/8 NC x 1 Hex hd cap screw flanged GR5
12	WP14350	-	3/8 NC Flange lock nut
13	*	-	3/8 Std Flat washer

* Obtain Locally



CLICK HERE TO **DOWNLOAD** THE COMPLETE MANUAL

- Thank you very much for reading the preview of the manual.
- You can download the complete manual from: www.heydownloads.com by clicking the link below



- Please note: If there is no response to CLICKING the link, please download this PDF first and then click on it.

CLICK HERE TO **DOWNLOAD** THE COMPLETE MANUAL