

# GROOMING MOWERS

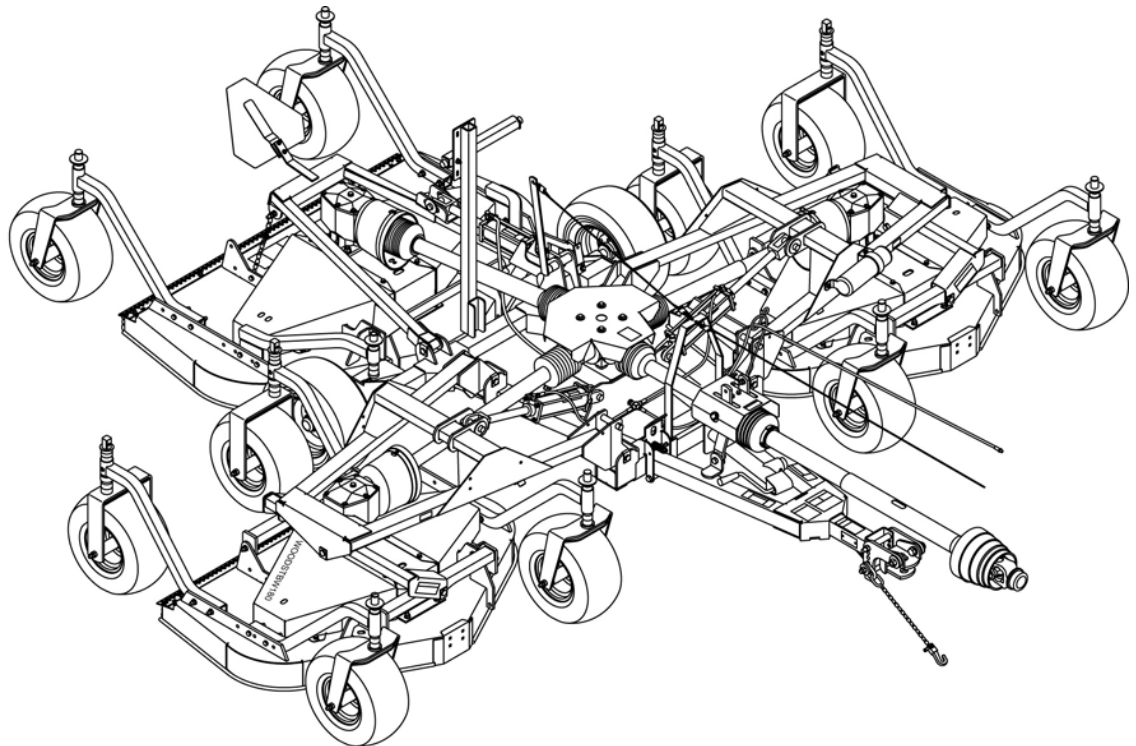
**FM1012**

**FM1015**

**FM1017**

## REAR DISCHARGE

Serial Number 1XFFM10XAB0000106 & Above



CLICK HERE TO **DOWNLOAD** THE COMPLETE MANUAL

- Thank you very much for reading the preview of the manual.
- You can download the complete manual from: [www.heydownloads.com](http://www.heydownloads.com) by clicking the link below



- Please note: If there is no response to CLICKING the link, please download this PDF first and then click on it.



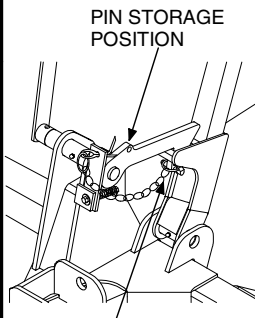
CLICK HERE TO **DOWNLOAD** THE COMPLETE MANUAL



# SAFETY & INSTRUCTIONAL DECALS



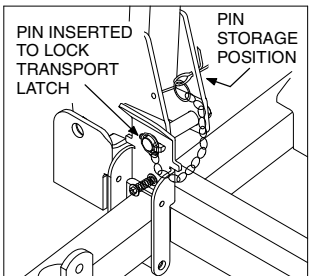
**ATTENTION! BECOME ALERT! YOUR SAFETY IS INVOLVED!**  
**Replace Immediately If Damaged!**



 <p>44650</p>	 <h2>WARNING</h2>	 <p>PIN STORAGE POSITION</p> <p>PIN INSERTED TO LOCK TRANSPORT LATCH</p>
	<p><b>RAISED MOWER CAN DROP AND CRUSH</b></p> <ul style="list-style-type: none"> <li>Before working underneath rear mower:           <ul style="list-style-type: none"> <li>Raise rear mower to transport position.</li> <li>Insert pin to lock transport latch.</li> <li>Securely block up rear of mower. See manual.</li> </ul> </li> <li>Blocking up prevents mower dropping from transport latch release or failure, hydraulic leak down, or hydraulic system failures.</li> </ul> <p><b>FAILURE TO FOLLOW INSTRUCTIONS CAN RESULT IN SERIOUS INJURY OR DEATH.</b></p>	

7 - 5WP44650

11 - 5WP44651

 <p>44651</p>	 <h2>WARNING</h2>	 <p>PIN INSERTED TO LOCK TRANSPORT LATCH</p> <p>PIN STORAGE POSITION</p> <p>SIDE MOWER TRANSPORT LATCHES</p>
	<p><b>RAISED MOWERS CAN DROP AND CRUSH</b></p> <ul style="list-style-type: none"> <li>Keep away. Do not go underneath.</li> <li>When raised, insert pins to lock transport latches.</li> <li>Lower after transport.</li> </ul> <p><b>FAILURE TO FOLLOW INSTRUCTIONS CAN RESULT IN SERIOUS INJURY OR DEATH.</b></p>	



6 - 5WP38421

4 - 5WP33347

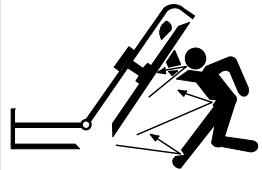

 <h2>DANGER</h2>

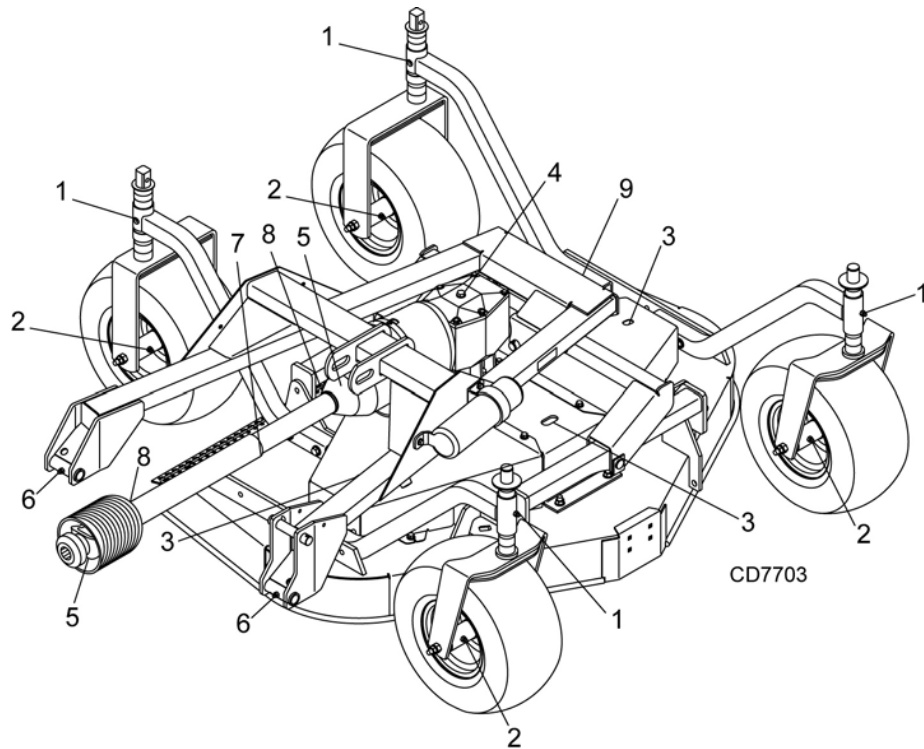
<p><b>GUARD MISSING. DO NOT OPERATE.</b></p>
 <h2>DANGER</h2>

<p><b>GUARD MISSING. DO NOT OPERATE.</b></p> <p><small>33347E</small></p>
 <h2>DANGER</h2>

 <p>38421-A</p>	 <h2>WARNING</h2>
	<p><b>RAISED MOWER CAN DROP AND CRUSH</b></p> <ul style="list-style-type: none"> <li>Before working underneath side mowers, lower side mowers and securely block up. See manual.</li> <li>Blocking up prevents mower dropping from transport latch release or failure, hydraulic leak down or hydraulic system failure.</li> </ul> <p><b>FAILURE TO FOLLOW INSTRUCTIONS CAN RESULT IN SERIOUS INJURY OR DEATH.</b></p>

17 - 5WP44656

 <p>44656</p>	 <h2>WARNING</h2>
	<p><b>RAISED MOWERS EXPOSE BLADES AND INCREASE THROWN OBJECT HAZARDS</b></p> <ul style="list-style-type: none"> <li>Only raise for transport.</li> <li>Stop mowers before raising.</li> </ul> <p><b>FAILURE TO FOLLOW INSTRUCTIONS CAN RESULT IN SERIOUS INJURY OR DEATH.</b></p>



<b>REF</b>	<b>DESCRIPTION</b>	<b>FREQUENCY</b>
1	Caster Wheel Pivots	8 Hours
2	Caster Wheel Hubs	8 Hours
3	Blade Spindles	24 Hours
4	Gearbox (Fill 1/2 full with SAE 90W gear lube	Check For Leaks Daily
5	Driveline U-Joints	8 Hours
6	Wing Pivots	8 Hours
7	Telescoping Shaft	8 Hours
8	Shield Bearing	8 Hours
9	Deck Pivot	8 Hours

**Figure 8.** Lubrication Points - Deck

5. Remove vertical shaft seal (18). Replace with new seal (see Seal Replacement, page 29).

Vertical seal should be recessed in housing. Horizontal seal should be pressed flush with outside of housing.

**NOTE:** Distortion to seal cage or damage to seal lip will cause seal to leak.

6. Fill gearbox with SAE 80W or 90W gear lube until it runs out the level plug.
7. Assemble gearbox and pulley to gearbox stand. Attach gearbox stand to mower deck.

### Horizontal Leak Repair (Figure 17)

1. Disconnect and remove the driveline from the gearbox.
2. Remove vent plug (24) and siphon gear lube from housing through this opening.
3. If the leak occurred at either end of horizontal shaft, remove oil cap (20) and/or oil seal (19). Replace with new one (refer to Seal Replacement, page 29).
4. Fill gearbox with SAE 80W or 90W gear lube until it runs out the level plug.

### Gearbox Disassembly (Figure 17)

1. Remove top cover (22) from housing. Turn gearbox upside down and pour out remaining gear oil from gearbox.
2. Remove oil cap (20) (to be replaced).
3. Remove snap ring (10) and shim (13) from input shaft (3).
4. Support gearbox in hand press and push on input shaft (3) to remove bearing (7) and spacer (11).
5. Remove gear (1) from inside housing.
6. Remove oil seal (19) from front of housing (to be replaced).
7. Remove snap ring (10) and shim (13) from front of housing (2).
8. Remove input bearing (7) by using a punch and hammer from outside of housing.
9. Support housing in vise in a horizontal position.
10. The castle nut (15) and cotter pin (25) are already removed with the drive sheave. Remove the snap ring (21), washer (8), and seal (18).
11. Remove cotter pin (9), castle nut (14), and washer (8) from output shaft (4).
12. Remove output shaft (4) by using a punch and hammer and tap on top to drive down.
13. Remove gear (5) and shim (16) from inside housing.

14. Remove bearing (26) by using a punch and hammer from the top, outside the housing.
15. Support housing upside down (top cover surface) and remove bearing (6) by using a punch and hammer from the bottom side of the housing.
16. Inspect gears for broken teeth and wear. Some wear is normal and will show on loaded side. Forged gear surfaces are rough when new. Check that wear pattern is smooth.
17. Inspect vertical and horizontal shafts for grooves, nicks, or bumps in the areas where the seals seat. Resurface any damage with emery cloth.
18. Inspect housing and caps for cracks or other damage.

### Gearbox Reassembly (Figure 17)

**NOTE:** Repair to this gearbox is limited to replacing bearings, seals, and gaskets. Replacing gears, shafts, and a housing is not cost effective. Purchasing a complete gearbox is more economical.

1. Clean housing, paying specific attention to areas where gaskets will be installed.
2. Wash housing and all components thoroughly. Select a clean area for gearbox assembly. Replace all seals, bearings, and gaskets. All parts must be clean and lightly oiled before reassembling.
3. Insert output bearings (6 & 26) in the housing, using a round tube of the correct diameter and a hand press.
4. Slide output shaft (4) through both bearings (6 & 26) until it rests against bearing (6).
5. Slide shim (16) over output shaft (4).
6. Press gear (5) onto output shaft (4) and secure with washer (17), castle nut (14), and cotter pin (9).
7. Apply grease to lower seal lips (18) and press seal over output shaft (4), using a tube of the correct diameter. Be sure not to damage the seal lip. Press in housing so that seal is recessed.
8. Insert protective washer (8) by hand. Install snap ring (21) and position it together with dual lip seal (18) by pressing it into position. Verify that snap ring is seated correctly.
9. Press bearing (7) into the housing, using a round tube of the correct diameter and a hand press. Secure with shim (13) and snap ring (10).
10. Secure snap ring (11) on input shaft (3) if not already secure.
11. Place gear (1) through top of housing and align gear (1) and gear (5) so that gear teeth are a match.

## FM1012, FM1015 & FM1017 MAIN FRAME ASSEMBLY

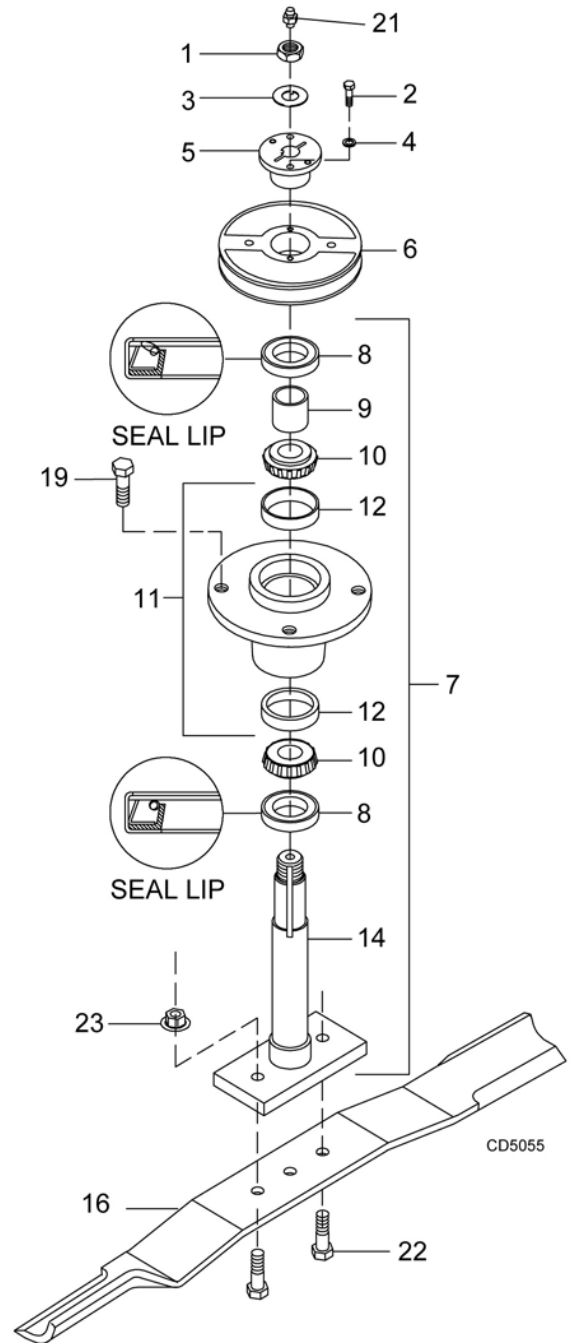
REF	PART	QTY	DESCRIPTION	REF	PART	QTY	DESCRIPTION
1	----	1	Trailer assembly (see page 42)	23	5WP38294	1	Rope, .25 x 46.0
2	----	1	Right wing assembly (see 44)	24	5WP1031166	2	Hydraulic cylinder 3 x 10 (see page 58)
3	----	1	Left wing assembly (see page 44)	25	5WP29547	1	Hydraulic cylinder 3 x 8 (see page 58)
4	----	1	Right deck assembly FM1012 (see page 46) -or-	26	5WP1631	2	1 x 3.63 Headless pin
4	----	1	Right deck assembly FM1015, FM1012 (see page 45)	27	5WP8346	4	1 x 4.58 Headless pin
5	----	1	Left deck assembly FM1012 (see page 46) -or-	28	5WP1006400	1	Bulkhead fitting, 9/16 JICM x 1/4 NPTM
5	----	1	Left deck assembly FM1015, FM1017 (see page 45)	29	5WP1006401	1	Cross, 9/16 JICM x 1/4 NPTF
6	5WP40805	1	Rear wing assembly	30	5WP1006402	2	Hose, 33 x 9/16 JICF x 9/16 JICM
7	----	1	Rear deck assembly (see page 45)	31	5WP1006403	1	Hose, 48 x 9/16 JICF x 9/16 JICM
8	5WP1023226	2	Drive, Cmpl 40, 21.3 x 32.3 FM1012 (see page 54) -or-	32	5WP1006404	1	Hose, 108 x 9/16 JICF x 1/4 NPTM
8	5WP1023227	2	Drive, Cmpl 40, 25.6 x 40.9 FM1015 (see page 54) -or-	33	5WP1006405	3	Elbow, 9/16 JICF x 1/2 NPTM 90o w/ 3/32 Restrictor
8	5WP1023228	2	Drive, Cmpl 40, 28.3 x 46.4 FM1017 (see page 54)	34	5WP40908	1	Complete decal set
9	5WP1023225	1	Drive, Cmpl 40, 26.9 x 43.5 (see page 54)	40	*	Pin, Safety 3/16	
10	----	6	Rotating caster & arm (see page 48)	41	*	1/4 NC x 1/2 Round head screw	
11	----	4	Non-rotating caster & arm (see page 48)	42	*	1/4 NC Hex nut	
12	----	2	Height adjustment post and arm (see page 47)	43	*	Pin, Cotter 1/4 x 1-3/4	
13	5WP38001	4	Pin, Wing hinge	44	*	5/16 NC x 1/2 Carriage bolt	
14	5WP58984	2	Pin, Rear wing hinge	45	*	5/16 NC Flange lock nut	
15	5WP1791	6	.63 x 1.00 x .56 HT Sleeve	46	*	1/2 NC x 1-3/4 HHCS GR5	
16	5WP44638	2	1/4 Chain - 16 link	47	*	1/2 NC x 2 HHCS FT GR5	
17	5WP62484	1	SMV Socket	48	*	1/2 NC x 3-1/2 GR5	
18	5WP1004251	1	SMV Bracket	49	*	1/2 Flat washer	
19	5WP24611	1	SMV Emblem	50	*	1/2 NC Flange lock nut	
20	5WP38296	1	Rope, .25 x 95.0	51	*	5/8 NC x 2-1/2 HHCS GR5	
21	5WP38295	3	Rope clamp	52	*	5/8 NC Flange lock nut	
22	5WP38257	3	S-Hook .25 x 2.25	53	*	1 Standard flat washer	

HHCS Hex Head Cap Screw

\* Standard Hardware, Obtain Locally

## BLADE & SPINDLE ASSEMBLY

REF	PART	QTY	DESCRIPTION
1	5WP37009		Nut, Jam 7/8 NF
2		*	Screw HHCS 1/4 NC x 1 GR5
3	5WP52898		Washer, Lock .929 x 1.66
4		*	Washer, Lock 1/4
5	5WP34440		Bushing, H 1 Strt bore w/key
6	5WP12622		Sheave, H 1 BK 5.0 PD (FM1012 Wing Deck, FM1015 Rear Deck, FM1017 Wing & Rear Deck) <b>-or-</b>
6	5WP66694		Sheave, H 1 BK 4.17 PD (FM1012 Rear Deck & FM1015 Wing Deck)
7	5WP52881		Spindle Assembly Complete
8	5WP52949		Seal 1.50 x 2.12 x .31
9	5WP52872		Sleeve 1.14 x 1.50 x .55
10	5WP29899		Bearing, Cone
11	5WP52882		Spindle, Housing With Cups
12	5WP29898		Bearing, Cup
14	5WP52852		Shaft, Blade Spindle
16	5WP7144BDKT		Blade Kit, High Lift FM1012 Complete (7 blades)
16	5WP9180BDKT		Blade Kit, High Lift FM1015 Complete (9 blades)
16	5WP9204BDKT		Blade Kit, High Lift FM1017 Complete (9 blades)
16	5WP7144BDKT2		Blade Kit, Low Lift FM1012 Complete (7 blades)
16	5WP9180BDKT2		Blade Kit, Low Lift FM1015 Complete (9 blades)
16	5WP9204BDKT2		Blade Kit, Low Lift FM1017 Complete (9 blades)
16	5WP1008199K2		Blade Kit, High Lift, 48 Decks (2 blades)
16	5WP1001511K2		Blade Kit, Low Lift, 48 Decks (2 blades)
16	5WP1001850K2		Blade Kit, Mulching, 48" Decks (2 blades)
16	5WP1001513KT		Blade Kit, High Lift, 60 Decks (3 blades)
16	5WP1001510KT		Blade Kit, Low Lift, 60 Decks (3 blades)
16	5WP1001950KT		Blade Kit, Mulching, 60" Decks (3 blades)
16	5WP1008199KT		Blade Kit, High Lift 72 Decks (3 blades)
16	5WP1001511KT		Blade Kit, Low Lift 72 Decks (3 blades)
16	5WP1001850KT		Blade Kit, Mulching, 72 Decks (3 blades)
19	5WP4358		Screw, HHCS 1/2 NF x 1-1/4 GR5
21	5WP1972		Grease Fitting 1/4-28 Tapered Thread
22	5WP3379		Screw, HHCS 1/2 NC x 1-1/2 GR5
23		*	Nut, Flanged Lock 1/2 NC



CLICK HERE TO **DOWNLOAD** THE COMPLETE MANUAL

- Thank you very much for reading the preview of the manual.
- You can download the complete manual from: [www.heydownloads.com](http://www.heydownloads.com) by clicking the link below



- Please note: If there is no response to CLICKING the link, please download this PDF first and then click on it.

CLICK HERE TO **DOWNLOAD** THE COMPLETE MANUAL