



---

# OPERATOR'S MANUAL

---

## WHEEL LOADER

**921E**  
**TIER 3**

---



READ, UNDERSTAND, AND FOLLOW ALL SAFETY PRECAUTIONS AND INSTRUCTIONS FOUND IN THIS MANUAL BEFORE OPERATING THE MACHINE.

CLICK HERE TO **DOWNLOAD** THE COMPLETE MANUAL

- Thank you very much for reading the preview of the manual.
- You can download the complete manual from: [www.heydownloads.com](http://www.heydownloads.com) by clicking the link below



- Please note: If there is no response to CLICKING the link, please download this PDF first and then click on it.

CLICK HERE TO **DOWNLOAD** THE COMPLETE MANUAL

**IDENTIFICATION NUMBERS  
MODEL, SERIAL NUMBER, AND YEAR OF  
MANUFACTURE**

When ordering parts, obtaining information or assistance, always supply your dealer with the type and serial number of your machine or accessories.

Write the following information in the spaces below: The type, serial number and year of manufacture of your machine, accessories and the serial numbers of the various hydraulic and mechanical components.

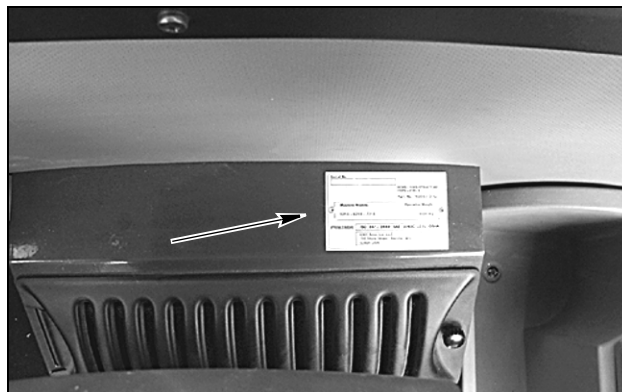
Make a record of the numbers and keep the record and your Manufacturer's Statement of Origin in a safe place.

PRODUCT IDENTIFICATION PLATE	
➤ _____	Model
➤ _____	Serial Number
➤ _____	Manufacturing Year

ENGINE	
➤ _____	Make and Model
➤ _____	Serial Number

COMPONENT SERIAL NUMBERS	
➤ _____	Transmission
➤ _____	Front and Rear Axle
➤ _____	
➤ _____	ROPS CAB
➤ _____	

**ROPS CAB**



BD06H167

Figure 8

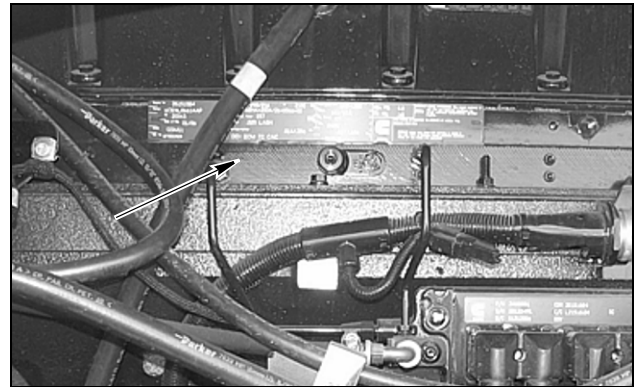
**PRODUCT IDENTIFICATION NUMBER (P.I.N.)**



BD07A165

Figure 9

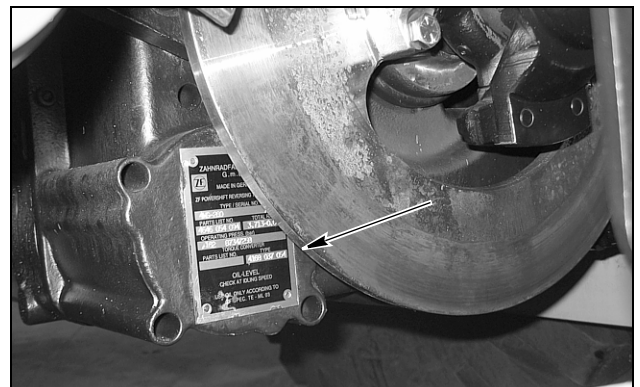
**ENGINE**



BD07A056

Figure 10

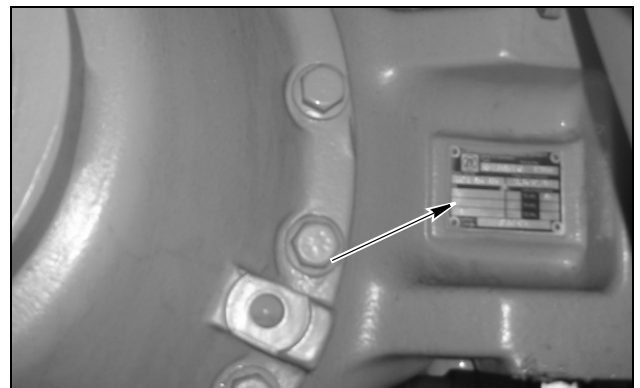
**TRANSMISSION**



BD07A055

Figure 11

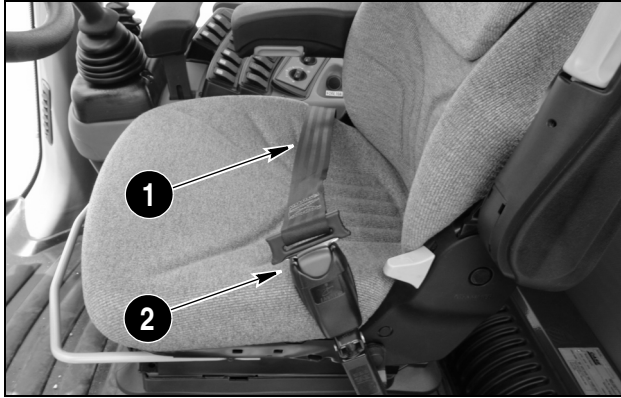
**AXLE**



BD07A054

Figure 12

**SEAT BELT PRECAUTIONS**



BD06G176

Figure 4

1. RIGHT-HAND BELT STRAP
2. LATCH MECHANISM

1. Insert the metal end of the right-hand belt strap into the latch mechanism on the left-hand side of the seat.
2. Tighten the seat belt by pulling on the loose end of the right-hand seat belt.



BD06G176

Figure 5

1. To unlatch the seat belt, press the red button on the left-hand side latch mechanism.

**WARNING:** Before starting the engine insure seat belts are securely fastened. The seat belt can help insure your safety if it is used and properly maintained. Never wear a seat belt loosely or with slack in the belt system. Never wear the belt in a twisted condition or pinched between the seat structural members. Failure to comply could result in serious injury or death.

M422A

**WARNING:** Securely fasten your seat belt. Your machine is equipped with a ROPS cab, ROPS canopy or ROPS frame for your protection. The seat belt can help insure your safety if it is used and maintained. Never wear a seat belt loosely or with slack in the belt system. Never wear the belt in a twisted condition or pinched between the seat structural members. Failure to comply could result in serious injury or death.

M437



BP97D030

Figure 26

**GO THIS FAR**



BP97D060

Figure 29

**ALL STOP AND HOLD**

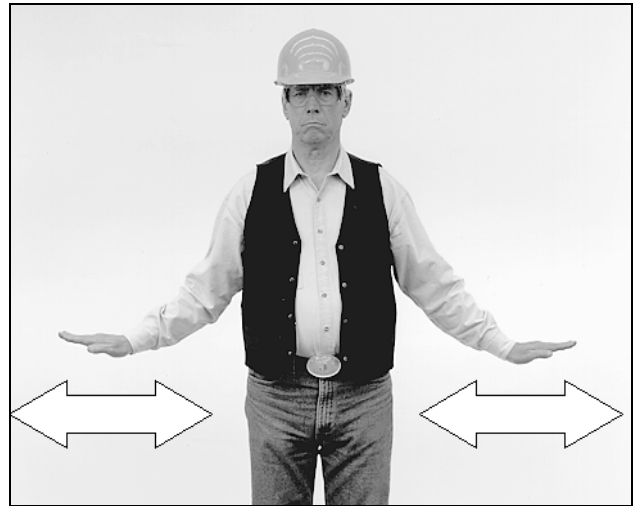


BI97D029

Figure 27

**STOP**

Move one hand back and forth.



BI97D021

Figure 30

**EMERGENCY STOP**

Move both hands back and forth.



BI97D028

Figure 28

**RAISE LOAD OR TOOL**

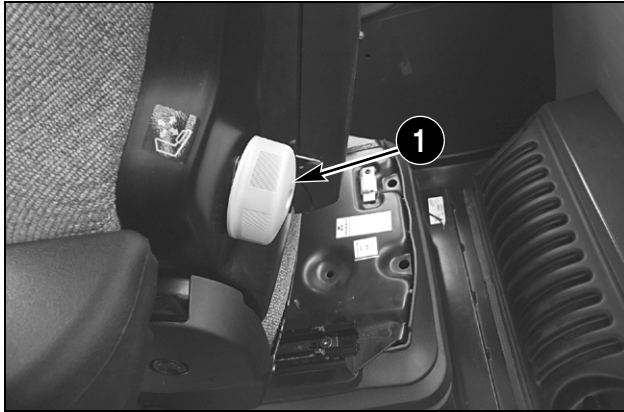


BI97D027

Figure 31

**LOWER LOAD OR TOOL**

**OPERATOR'S SEAT  
STANDARD SEAT**



RD06F051

Figure 14

**1. LUMBAR ADJUSTMENT KNOB:**

Turn the knob clockwise to increase the lumbar support. Turn the knob counterclockwise to decrease the lumbar support.



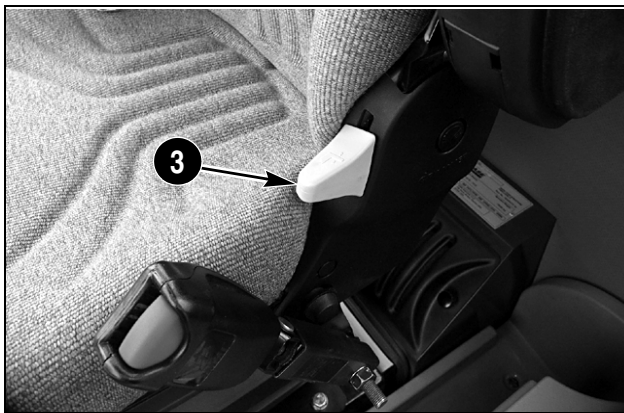
BD06F047

Figure 15

**2. ARMREST HEIGHT CONTROL ADJUSTMENT:**

Turn the knob to raise or lower the armrest to the desired position.

**NOTE:** Each armrest will pivot to the up position.

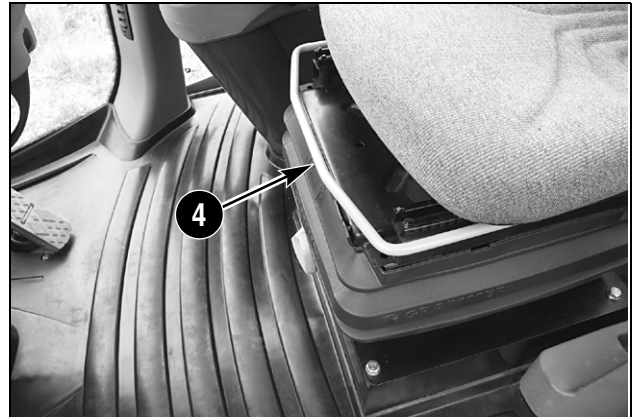


RD06F046

Figure 16

**3. RECLINER ADJUSTMENT HANDLE:**

Lift up on handle, move the backrest to the desired position, release the handle to lock in position.

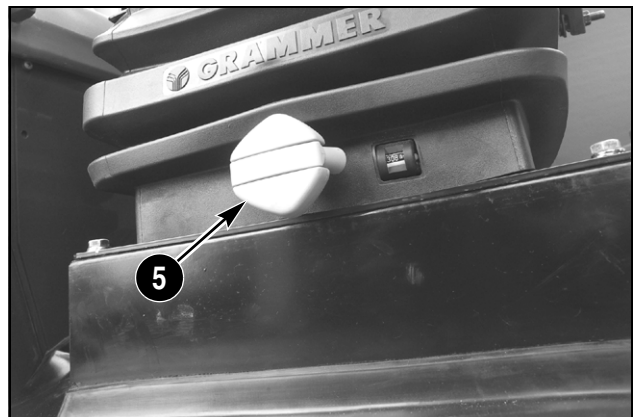


RD06F052

Figure 17

**4. SLIDE ADJUSTMENT LEVER:**

Pull the slide adjustment lever up and adjust the seat forward or backward as required. Release the lever to lock the seat in position.



BD06F048

Figure 18

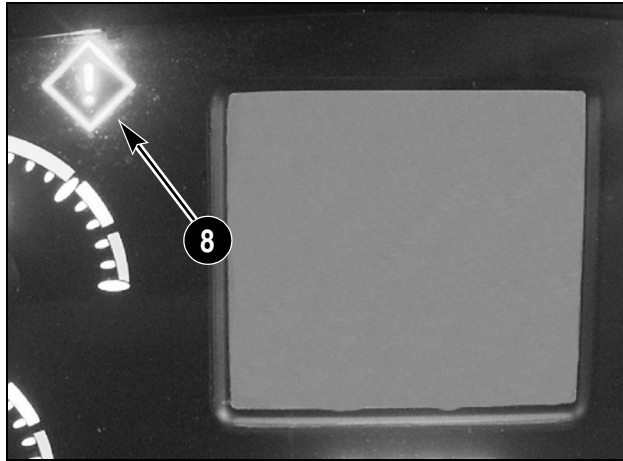
**5. WEIGHT ADJUSTMENT KNOB:**

To adjust the seat for your weight, pull the release lever away from the knob. Use the release lever to turn the knob clockwise to increase the weight resistance. Turn the knob counterclockwise to decrease the weight resistance. Adjust the seat to operator preference and comfort.

**HEIGHT ADJUSTMENT, STANDARD SEAT:**

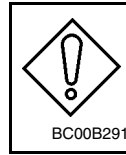
Lift the seat all the way up, drop the seat to the lowest position. Lift the seat to the desired position. The seat will lock into accepted position.

**INSTRUMENT PANEL INDICATORS**



BD06F096

Figure 43



**8. CAUTION MASTER INDICATOR (YELLOW, NON-CRITICAL):**

The Caution Master Indicator is a non-critical warning display. See Non - Critical Warning Displays.

**NON - CRITICAL WARNING DISPLAYS**

When the caution is “ON”, change your operating method, schedule a shutdown for maintenance, or if the condition persists, contact your dealer. The following table is a listing of warning displays that may appear on the instrument cluster and the corrective action required.

When a fault occurs, an audible alarm will sound for 3 seconds and the Caution Master Indicator will be YELLOW. The caution message will be displayed in the message area. If this occurs, return the machine to a service position, and turn the engine off, and take corrective action to help avoid expensive repairs.

**NON - CRITICAL WARNINGS**

Display	Description	Corrective Action
<b>PARKING BRAKE</b>	Parking Brake engaged and machine shifted F or R	Release the parking Brake.
<b>COOLANT TEMPERATURE</b>	High engine coolant temperature	<ol style="list-style-type: none"> <li>1. Idle machine and monitor temperature.</li> <li>2. Clean radiator or operate fan reverser (If equipped).</li> <li>3. Check coolant level and add coolant if necessary.</li> <li>4. If condition persists, contact your dealer.</li> </ol>
<b>HYDRAULIC TEMPERATURE</b>	High hydraulic temperature	<ol style="list-style-type: none"> <li>1. Idle machine and monitor temperature.</li> <li>2. Clean cooler or operate fan reverser (If equipped).</li> <li>3. Check hydraulic fluid level.</li> <li>4. If condition persists, contact your dealer.</li> </ol>
<b>TRANSMISSION TEMPERATURE</b>	High transmission temperature	<ol style="list-style-type: none"> <li>1. Idle machine and monitor temperature.</li> <li>2. Clean cooler or operate fan reverser (If equipped).</li> <li>3. Use a lower gear.</li> <li>4. If condition persists, contact your dealer.</li> </ol>
<b>AIR FILTER</b>	High air filter restriction	<ol style="list-style-type: none"> <li>1. Clean air filter.</li> <li>2. Replace primary and secondary filters.</li> <li>3. If condition persists, contact your dealer.</li> </ol>
<b>TRANSMISSION FILTER</b>	Transmission filter restriction	<ol style="list-style-type: none"> <li>1. Replace transmission filter.</li> <li>2. If condition persists, contact your dealer.</li> </ol>
<b>HYDRAULIC FILTER</b>	Hydraulic filter restriction	<ol style="list-style-type: none"> <li>1. Replace hydraulic filter.</li> <li>2. If condition persists, contact your dealer.</li> </ol>
<b>ALTERNATOR</b>	Alternator malfunction	<ol style="list-style-type: none"> <li>1. Check electrical system.</li> <li>2. Voltages are out of range.</li> <li>3. Change operating procedure.</li> <li>4. If condition persists, contact your dealer.</li> </ol>
<b>FUEL</b>	Low fuel.	Fill fuel tank - do not allow tank to totally empty.

## SELECT SCREEN

The select screen will allow you to make time settings as well as give access to machine information. Navigate this screen also by highlighting your selection and pressing confirm. This will allow you to change clock settings or view the hardware and software screens. No operator changes can be made to the hardware or software screens.



BD06F192

Figure 66

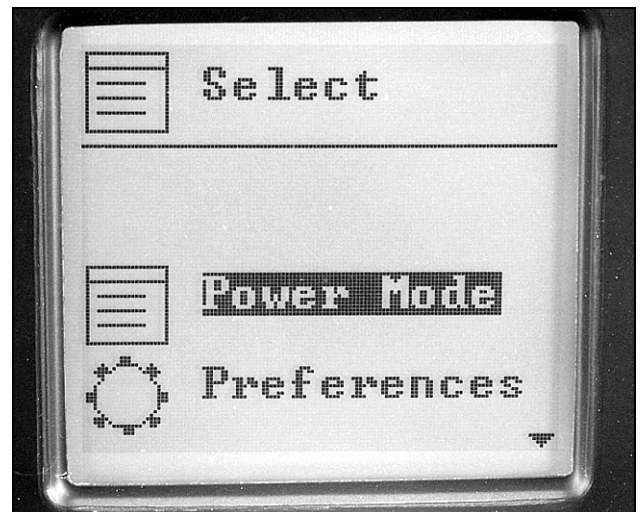
**NOTE:** Pressing the escape key will return the LCD back to the normal driving screen. In order to lock the changes into memory, the operator must press the confirm key, then use the escape key to page back to the main screen. Turning the machine off will also lock the settings into memory.

## SELECTING POWER MODES

The power mode allows the operator to choose the most effective machine power for the current job conditions. Idling can be changed from automatic to a fixed rate.

Most commonly Auto is chosen, as the power will automatically increase or decrease between maximum power and standard power while the machine is working. This allows for maximum power if necessary, but will switch to standard mode for economy. Maximum power can be chosen for more severe work conditions. Economy can be chosen for limited power and fuel efficiency.

Press and hold the confirm key for two seconds to arrive at the service screen.

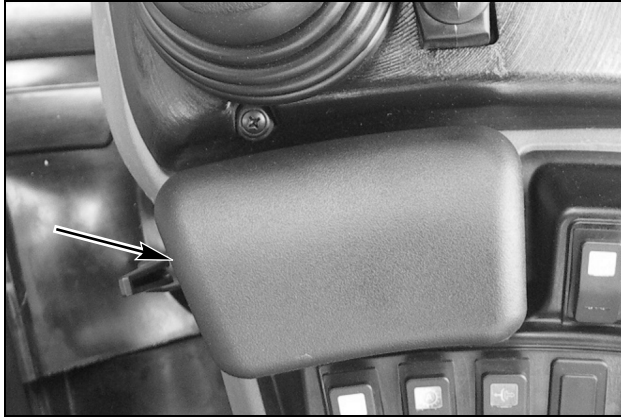


BD06F177A

Figure 67

At the screen shown above, highlight the power mode, and press the confirm key to move to the Power Mode Selection Menu.

**WRIST REST ADJUSTMENTS**

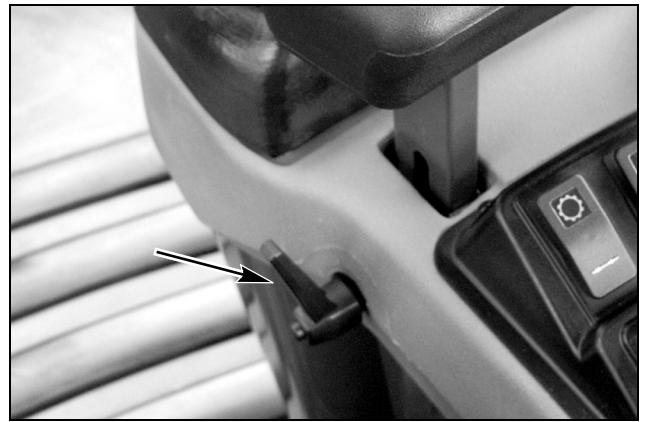


BD06F094

Figure 88

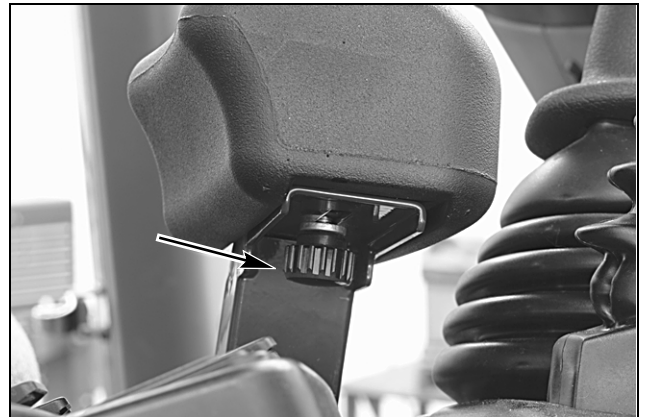
**WRIST REST:**

Adjust the wrist rest to a comfortable height to operate the loader control levers.



BS06H111

Figure 89



BS06H111

Figure 90

**ADJUSTMENT KNOBS:**


To adjust the wrist rest, loosen the adjustment knobs. The wrist rest can be raised or lowered or moved back and forth. The top adjustment knob will allow the rest to slide back and forth. The lower adjustment knob will allow the wrist rest to be raised or lowered. Adjust to the most comfortable working position, and tighten the knob.

**BEFORE STARTING THE ENGINE**

Perform a daily walk around and visual inspection of the machine. Check for loose connections, faulty hoses, oil leaks, debris or trash buildup, loose bolts, damaged, or missing parts that could effect the normal and safe operation of the machine. Make any necessary corrections before operating the machine.

See the Quick Reference Maintenance Chart in this manual and complete the items in the daily - 10 hour section of the chart.

Check that the machine fuel tank is filled with clean fuel that matches the specifications given in this manual.



**WARNING:** *Do not operate the machine while under the influence of alcohol or drugs. Failure to comply could result in serious injury or death.*

**RUN-IN PERIOD**

Your machine will last longer, give better and more economical performance, if you pay particular attention to the engine during the initial run-in period. (See the Quick Reference Chart in Chapter 5 Lubrication and Maintenance for further information.)

During this period:

Warm up the engine before using it under load.

Do not operate the engine at maximum power for prolonged periods of time.

Do not run the engine for a long period at idle speed.


Frequently check the instruments on the instrument panel.

Check the oil levels and coolant solution level frequently.

During the run-in period, the following checks and servicing operations should be carried out in addition to those specified in the service schedule:

**IMPORTANT:** *For turbocharged engines, only shut the engine down from the low idle position to prevent damage to the turbocharger.*

**BEFORE OPERATING THE MACHINE**



**WARNING:** *Do not attempt to operate this machine unless you have first read and fully understand the safety messages and instructions appearing in this manual. Failure to comply could result in serious injury or death.*

CE-NA000

Before operating this machine, complete the following procedures:

1. Check the level of all fluids (engine oil, hydraulic fluid, and coolant) and make sure that the fluids and lubricants are suitable for prevailing conditions.
2. Carry out the daily maintenance operations.
3. Inspect the machine, look for any signs of possible leakage and check the hoses. Tighten or replace as necessary.
4. See Run-in period if the machine is new or if the engine has been reconditioned.
5. Check the tires for any visible damage. Replace or repair as necessary. Check for correct tire air pressure and adjust pressure if necessary.
6. Clean the steps and hand holds. Grease, oil, mud, or ice in winter on the steps and access handles can cause accidents. Make sure they are kept clean at all times.
7. Clean or replace any decals which are illegible. See Decals in Chapter 2.
8. Make sure that the engine access panels and all doors are properly closed and latched.
9. Secure the cab door in either fully closed or fully opened position.
10. Remove any obstructions which hinder visibility. Clean the windshield, the windows and the rear view mirrors.
11. Check that no tools or other items have been left on the machine or in the operator's compartment.
12. Make sure no one is on or under the machine. The operator must be alone on the machine.
13. Make sure no one is standing in the machine working area.
14. Find out about current safety measures in use on the work site.
15. Work out a convenient means of escape from the machine (emergency exit via the windshield, the rear or side window glass) in the event of the cab door being jammed or the machine turning over.
16. Before undertaking any travel or working operations during hours of darkness, make sure the lighting and signaling equipment is fully operative.

**AUXILIARY FORWARD, NEUTRAL, REVERSE (F-N-R) SWITCH WITH THREE SPOOL VALVE THREE LEVERS**



BD06F004

Figure 21

**1. THREE LEVER AUXILIARY F-N-R SWITCH**

- A. FORWARD
- B. NEUTRAL
- C. REVERSE

To actuate the Auxiliary F-N-R switch the following conditions **MUST** be met:

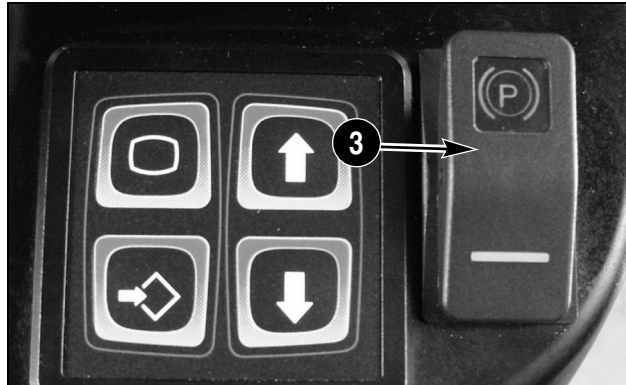
1. The machine must be stopped.
2. The engine must be running.
3. The Auxiliary F-N-R Switch (1) must be in Neutral (B).



BD06F160

Figure 22

**4. The Standard Transmission Control Lever (2) must be in neutral.**



RD06F099

Figure 23

**5. The Parking Brake must be released (3).**



BD06F103

Figure 24

When steps 1 through 5 have been completed the transmission enable switch may be enabled by pushing down on the top of the switch (4). The indicator light on the bottom of the switch will illuminate.

The transmission enable control will default back to the Standard Transmission Control Lever if:

1. The engine is stopped.
2. The parking brake is applied.
3. The transmission control lever is taken out of the neutral position.

CLICK HERE TO **DOWNLOAD** THE COMPLETE MANUAL

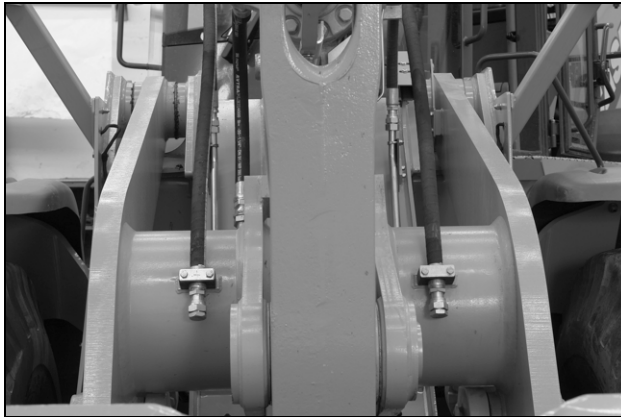
- Thank you very much for reading the preview of the manual.
- You can download the complete manual from: [www.heydownloads.com](http://www.heydownloads.com) by clicking the link below



- Please note: If there is no response to CLICKING the link, please download this PDF first and then click on it.

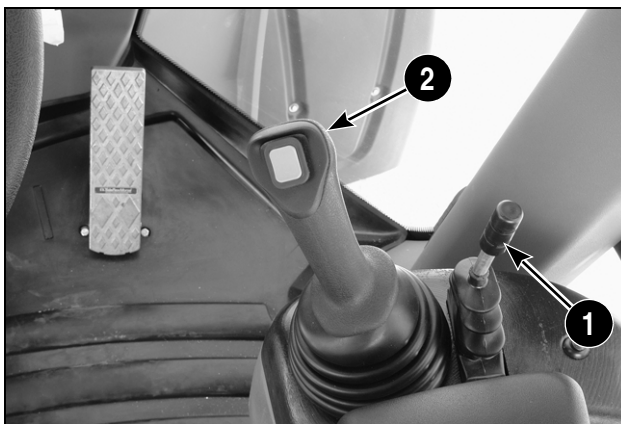
CLICK HERE TO **DOWNLOAD** THE COMPLETE MANUAL

**AUXILIARY HYDRAULIC CONNECTION (IF EQUIPPED)**



BD07A206

Figure 46

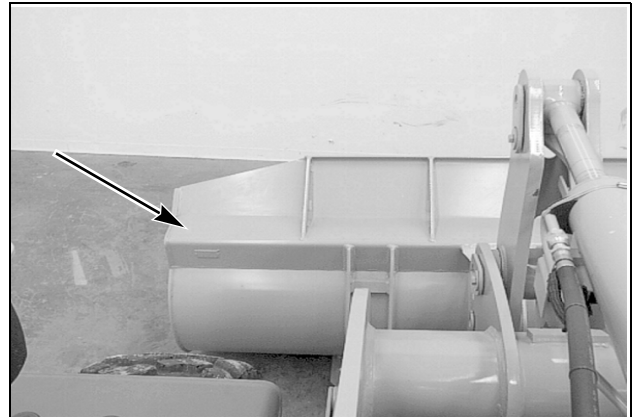


BD06F165

Figure 47

Your Wheel Loader may be equipped with an Auxiliary Hydraulic System. A control lever on the console controls flow to the auxiliary hydraulic connection points on the lift arms. The auxiliary control lever (1) used with a joystick (2) is equipped with mechanical detents to lock it into full forward, full rearward and neutral positions. Auxiliary control levers on non-joystick machines **DO NOT** have mechanical detents.

**BUCKET LEVEL INDICATOR**

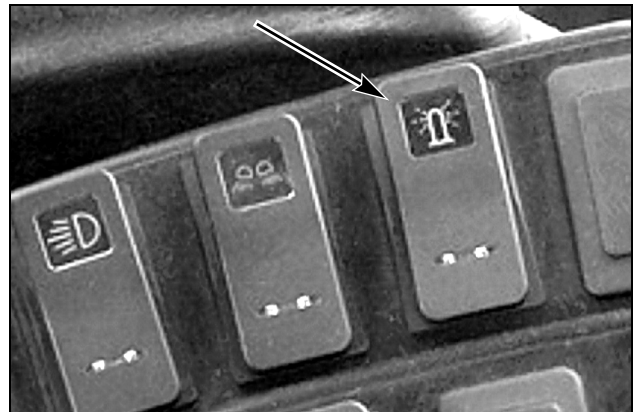


BD00N076

Figure 48

The bottom of the bucket is parallel with the ground when the flat portion of the bucket is horizontal.

**ROTATING BEACON (IF EQUIPPED)**



BD06G089

Figure 49

The rotating beacon control switch is on the RH console. Push the top of the switch for ON position and push the bottom of the switch for OFF position.

**Chapter 5**  
**LUBRICATION, FILTERS, AND FLUIDS**

**TABLE OF CONTENTS**

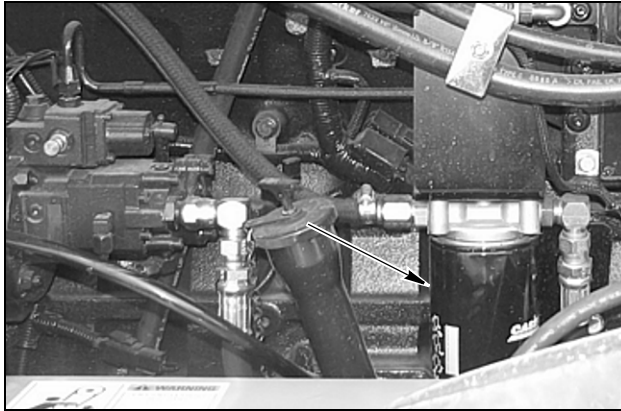
SERVICING INSTRUCTIONS .....	5-3
General Information .....	5-3
SUPPORT STRUT FOR LOADER LIFT ARMS .....	5-4
RELEASING PRESSURE IN THE HYDRAULIC SYSTEM .....	5-5
FLUIDS AND LUBRICANTS .....	5-6
921E Capacities and Specifications .....	5-6
ENGINE OIL VISCOSITY / TEMPERATURE RANGES .....	5-7
Transmission Oil Viscosity / Temperature Ranges .....	5-8
DAILY INSPECTIONS .....	5-10
LUBRICATION AND MAINTENANCE QUICK REFERENCE CHART .....	5-11
ACCESS DOORS AND FILL LOCATIONS .....	5-12
Variable Periodic Maintenance .....	5-14
10 Hour Maintenance .....	5-15
50 Hour Maintenance .....	5-16
100 Hour Maintenance .....	5-18
250 Hour Maintenance .....	5-24
500 Hour Maintenance .....	5-26
1000 Hour Maintenance .....	5-28
2000 Hour Maintenance .....	5-33

**LUBRICATION AND MAINTENANCE QUICK REFERENCE CHART**

SERVICE INTERVALS	PAGE	SERVICE POINTS	INITIAL NEW MACHINE	INTERVALS IN HOURS				
				CLEAN	CHECK	REPLACE	LUBRICATE	DRAIN
As Required	5-35	Air filter			AR	AR		
	6-6	Tires			AR			
Every 10 hours or shift change	5-15	Engine oil level			10			
	5-15	Air conditioner/alternator belt tension			10			
	5-15	Fuel water separator						10
	6-8	Wheel torque check (until stable)	Run-in		10			
Every 50 hours	5-16	Grease machine attachment					50	
	5-16	Hydraulic reservoir level			50			
	5-17	Transmission fluid			50			
	5-17	Coolant level			50			
Every 100 hours	5-18	Grease loader linkage					100	
	5-18	Grease steering pins					100	
	5-19	Drive shaft carrier bearing					100	
100 hours (Initial)	5-20	Engine oil and filters (initial only)	Run-in			100		
	5-21	Fuel filter (initial only)	Run-in			100		
	5-21	Hydraulic oil return filter (initial only)	Run-in			100		
	5-22	Front and rear axle oil (initial only)	Run-in			100		
	5-23	Transmission oil and filter (initial only)	Run-in			100		
Every 250 hours	5-24	Cab air filter		250				
	5-25	Coolant filter				250		
	5-25	Fuel filter				250		
Every 500 hours	5-26	Engine oil and filter				500		
	5-27	Drain fuel tank condensation						500
	5-27	Axle oil level			500			
	6-4	ROPS and seat belt			500			
	7-6	Battery fluid level			500			
Every 1000 hours	5-28	Pivot points/articulation fittings					1000	
	5-29	Axle oil (front and rear)				1000		
	5-30	Axle oil cooler filter (if equipped)				1000		
	5-31	Transmission fluid and filter				1000		
	5-32	Hydraulic oil filter				1000		
	5-32	Cab air filter				1000		
Every 1500 hours		Engine valve clearances	See your Case Dealer					
Every 2000 hours	5-33	Hydraulic fluid				2000		
	5-34	Engine coolant and filter				2000		
	5-35	Primary air filter				2000		
	5-35	Secondary air filter				2000		

**100 HOUR MAINTENANCE****REPLACE FUEL FILTER (Initial)**

Change the fuel filter when the hour meter registers 100 hours for a new machine during the initial run-in period. Filters should be changed every 250 hours thereafter or more frequently when operating conditions are severe.



BD07A023

Figure 37

Clean the filter head area, the outside of the filter and remove any dirt and debris around the area that might contaminate the system.

1. Keep all non-authorized personnel clear of the area. Park the machine on level ground, in neutral with the parking brake applied.
2. Lower bucket/attachment to the ground and install the transport/service link into the lock position.
3. Turn the filter counterclockwise and remove. Be sure to capture any fuel remaining in the lines or the filter and discard properly.
4. Apply a thin layer of clean oil to the gasket on the new filter.
5. Install the filter. Use your hands to tighten the filter 1/2 to 3/4 turn after the filter makes contact with the filter head.

**IMPORTANT:** *Never use a filter wrench to tighten a new filter on install.*



**WARNING:** *Engine fuel is flammable and can cause a fire or an explosion. Do not fill the fuel tank or service the fuel system near an open flame, welding, burning cigars, cigarettes, pipes, etc. Failure to comply could result in serious injury or death.*

**REPLACE HYDRAULIC OIL FILTERS (Initial)**

Replace the hydraulic oil filters when the hour meter registers 100 hours for a new machine during the initial run-in period. Filters should be changed every 1000 hours thereafter or more frequently when operating conditions are severe.



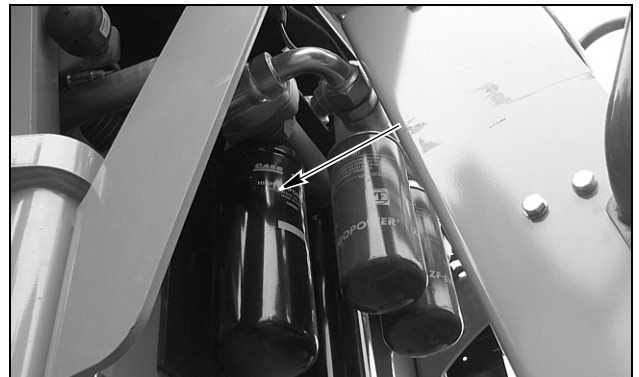
**WARNING:** *Fluid under pressure. Always rest the hydraulic bucket/attachment on the ground. Shut the engine off, turn the key to on, and move the hydraulic control levers through all movements several times to relieve residual pressure in the system. Failure to comply could result in serious injury or death.*

1. Keep all non-authorized personnel clear of the area. Park the machine on level ground, in neutral with the parking brake applied.
2. Lower bucket/attachment to the ground and install the transport/service link into the lock position.



**WARNING:** *Never drain oil or remove the oil filter while the engine is running. Failure to comply could result in serious injury or death.*

3. Slowly loosen the filler cap on the hydraulic reservoir to release pressure in the reservoir. Leave it loose during the procedure.
4. Turn the filters counterclockwise to remove.



BD07A024

Figure 38

**(COVER BRACKET REMOVED FOR VISUAL CLARITY)**

5. Lubricate the gasket of the new filter(s) with clean oil and install. After the filter makes contact with the filter head tighten 1/2 to 3/4 turns.

**IMPORTANT:** *Never use a filter wrench to tighten a new filter on install.*

6. Tighten the cap on the hydraulic reservoir.
7. Start the engine and run at 1000 rpm. Have an assistant check for leaks around the filter area.
8. Stop the engine, and check the hydraulic oil level. Top off if necessary.

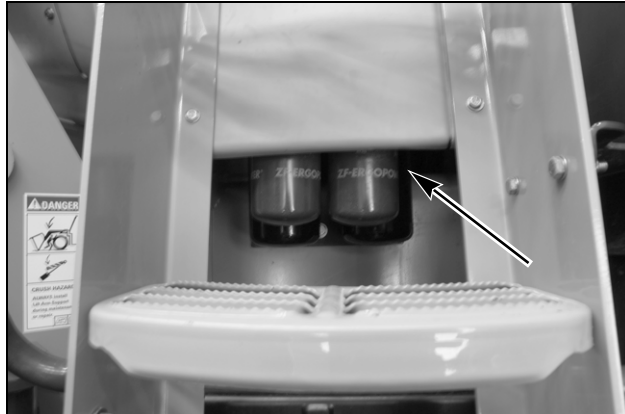
**1000 HOUR MAINTENANCE**

**TRANSMISSION FLUID AND FILTER**

**Service Specifications**

With filter change. . . . . 7.5 gal. (28.4 L)

Change the transmission fluid and filter every 1000 hours or more frequently when operating conditions are severe.

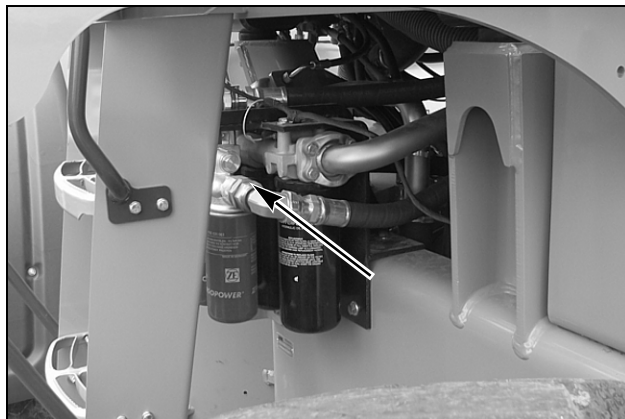


BD07A195

Figure 65

**TRANSMISSION FILTERS (LEFT SIDE)**

1. Keep all non-authorized personnel clear of the area. Park the machine on a level surface and apply the parking brake.
2. Lower bucket/attachment to the ground and lock the pilot control lock lever.
3. Put the transport/service link into the locked service position to avoid unexpected articulation, and stop the engine.

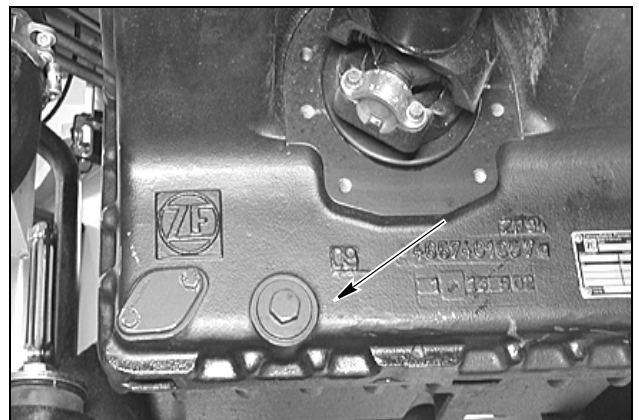


BD07A031

Figure 66

**(COVER REMOVED FOR VISUAL CLARITY)**

4. Clean the area around the filter head and around the transmission drain and fill caps.
5. Remove the dipstick.
6. Have a suitable container that will hold the appropriate amount of fluid before draining.



BD02N124

Figure 67

7. Remove the drain plug and drain the oil.



BD07A024

Figure 68

**(COVER REMOVED FOR VISUAL CLARITY)**

8. Remove the filter.
9. Apply a film of clean transmission oil to the gasket of the new filter and install. Make sure that the proper contact is made with the base.
10. Spin the breather, located on the top of the transmission a few times.
11. If the breather is difficult to spin follow steps 12 and 13.
12. Remove the breather. Clean it with solvent and dry with compressed air.

**WARNING:** *Wear full coverage safety glasses with side panels when using compressed air. Failure to comply could cause injury or death.*

13. Install the breather.
14. Check the oil level at the sight gauge.
15. Start the engine and check for oil leaks around the filter and drain plug.
16. Bring the transmission oil up to working temperature, and check the level again.

## WHEELS AND TIRES



**WARNING:** Exploding tires and / or rim parts can cause injury or death. Keep yourself and others out of the **danger area**. Stand on the tread side of the tire. Always use the correct air pressure and follow the instructions in this manual for adding air or servicing the tires.

SD020



**WARNING:** Explosive separation of the tire and / or rim parts can cause injury or death. When tire service is necessary, have a qualified tire technician service the tire.

84-113

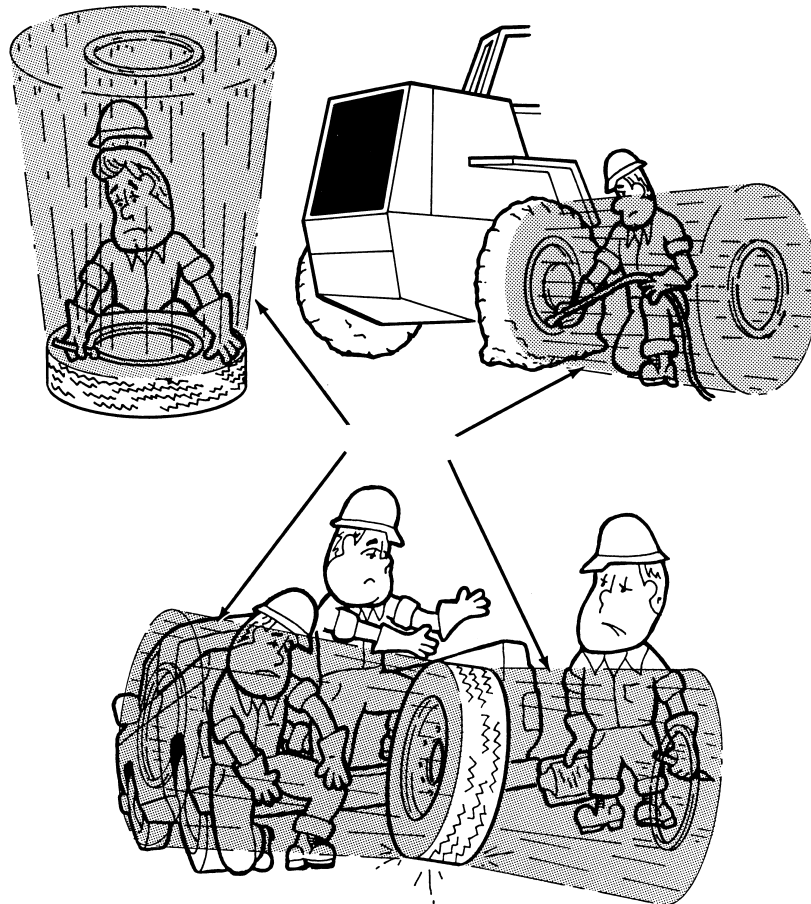


**WARNING:** **DO NOT** weld to wheel or rim when a tire is installed. Welding will cause an explosive air / gas mixture that will be ignited with high temperatures. This can happen to tires inflated or deflated. Removing air or breaking the bead is not adequate. **Tires MUST be completely removed from the rim prior to welding.** Failure to comply could result in serious injury or death.

SB134

## BALLAST

Adding ballast to the tires of your wheel loader is **NOT** recommended. Make sure tires are properly inflated.



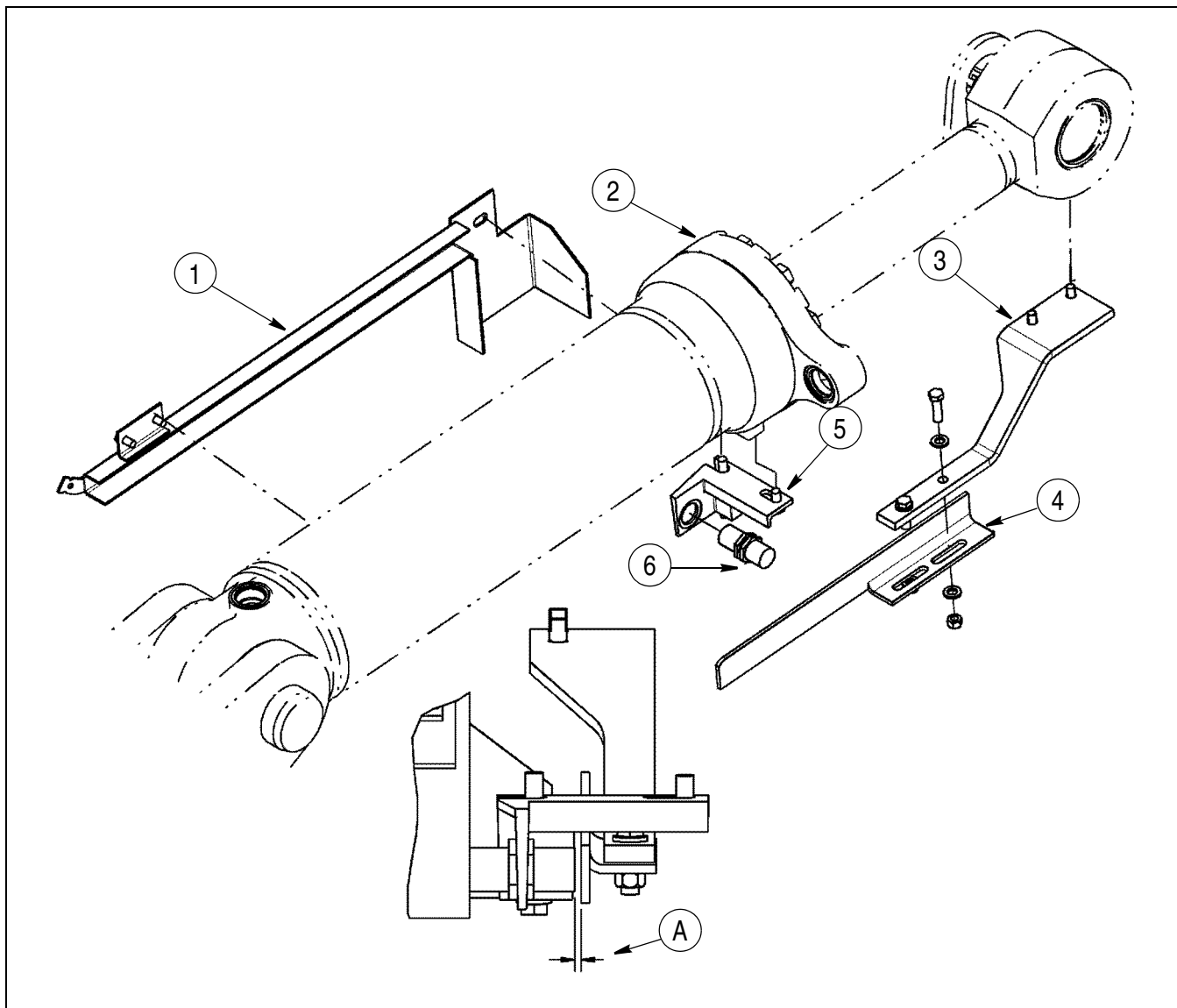
B910410J

Figure 5

The above illustration show danger areas caused by exploding tires and / or rim parts. **KEEP YOURSELF AND OTHERS OUT OF THESE DANGER AREAS.** Keep all non-authorized personnel clear of the area.

The next page shows the correct methods that you **MUST** use when adding air or servicing a tire.

## RETURN TO DIG ADJUSTMENT PROCEDURE



BSOON845

Figure 20

1. TARGET MOUNTING BRACKET
2. BUCKET CYLINDER
3. TARGET BAR

4. PROMIMITY SWITCH MOUNTING BRACKET
5. PROXIMITY SWITCH
6. PROXIMITY SWITCH GUARD
- A. 3.2 TO 5.0 MM (1/8 TO 3/16 INCH)

**IMPORTANT:** Before adjusting the return to dig, make certain that the target bar on the bucket linkage is not damaged. Slowly roll back and dump the bucket and make certain that the target bar stays the same distance from the switch. The switch mounting bracket protects the switch. Make certain the target bar cannot touch the switch when the bucket is dumped.

1. Keep all non-authorized personnel clear of the area. Park the machine on firm, level ground. Raise the lift arms until they are approximately horizontal. Fully dump the bucket. Lower the arms until bucket edge is on the ground. Apply the parking brake, and stop the engine.

2. Loosen the bolts holding the target mounting bracket (3) to the tilt cylinder eye. Align the target mounting bracket (3) parallel to the tilt cylinder (2), and tighten the bolts.
3. Loosen the bolts holding the proximity switch mounting bracket (5) to the tilt cylinder (2). Position the proximity switch (6) parallel to the target bar (4) and tighten the bolts.
4. Adjust the proximity switch (6) out toward the target bar (4), until an air gap of 3.2 to 5.0 mm (1/8 to 3/16 inch) (A) is obtained. Torque the jam nut to 6.0 to 7.5 N•m (4.5 to 5.5 pound-feet)

**NOTE:** The proximity switch (6) must not protrude past the proximity switch guard (1).

**ELECTRICAL SYSTEM****BATTERY SAFETY**

**WARNING:** Before you service a battery, always wear face protection, protective gloves and protective clothing. Battery acid or battery explosion can cause serious injuries. Failure to comply can cause injury or death.

SA046



**WARNING:** Batteries give off explosive gases. Keep all open flames, sparks and cigarettes away. Insure adequate ventilation when charging batteries or when using in a confined place. Always protect your face when working near batteries. Failure to comply can cause injury or death.

SAFETY\_ID\_1C02



**WARNING:** Battery acid causes severe burns. Batteries contain sulfuric acid. Avoid contact with skin, eyes or clothing. Failure to comply can cause injury or death. Antidote - EXTERNAL: flush with water.

INTERNAL: drink large quantities of water or milk. Follow with milk of magnesia, beaten egg or vegetable oil. Call physician immediately.

EYES: flush with water for 15 minutes and get prompt medical attention.

SB032



**WARNING:** When the battery electrolyte is frozen, the battery can explode if, (1) you try to charge the battery, or (2) you try to jump start and run the engine. To prevent the battery electrolyte from freezing, try to keep the battery at full charge. If you do not follow these instructions, you or others in the area can be injured. Failure to comply can cause injury or death.

SA033



**WARNING:** Connecting jump start (booster battery) cables incorrectly or short-circuiting battery terminals can cause an accident. Connect auxiliary starting cables as per the following instructions. Failure to comply can cause injury or death.

SAFETY\_ID\_1C02



**WARNING:** Sparks or flame can cause hydrogen gas in a battery to explode. To prevent an explosion, do the following:

1. When you DISCONNECT the battery cables, always disconnect the negative (1) battery cable first.
2. When you CONNECT the battery cables, always connect the negative (-) cable last.
3. Do not short circuit the battery posts with metal items.
4. Do not weld, grind, or smoke near a battery.

Failure to comply can cause injury or death.

SB034



**WARNING:** Do not reverse battery terminals. Connect positive cable ends to positive (+) terminals and negative cable ends to negative terminals (-). Failure to comply can cause machine damage, injury or death.

SAFETY\_ID\_1C02



**WARNING:** Before any operation on the components of the electrical circuit, put the key switch in the off position. When disconnecting the battery cables, always disconnect the negative (-) cable first. When reconnecting the battery cables, always connect the negative (-) cable last. Failure to comply can cause machine damage, injury or death.

SAFETY\_ID\_1C02



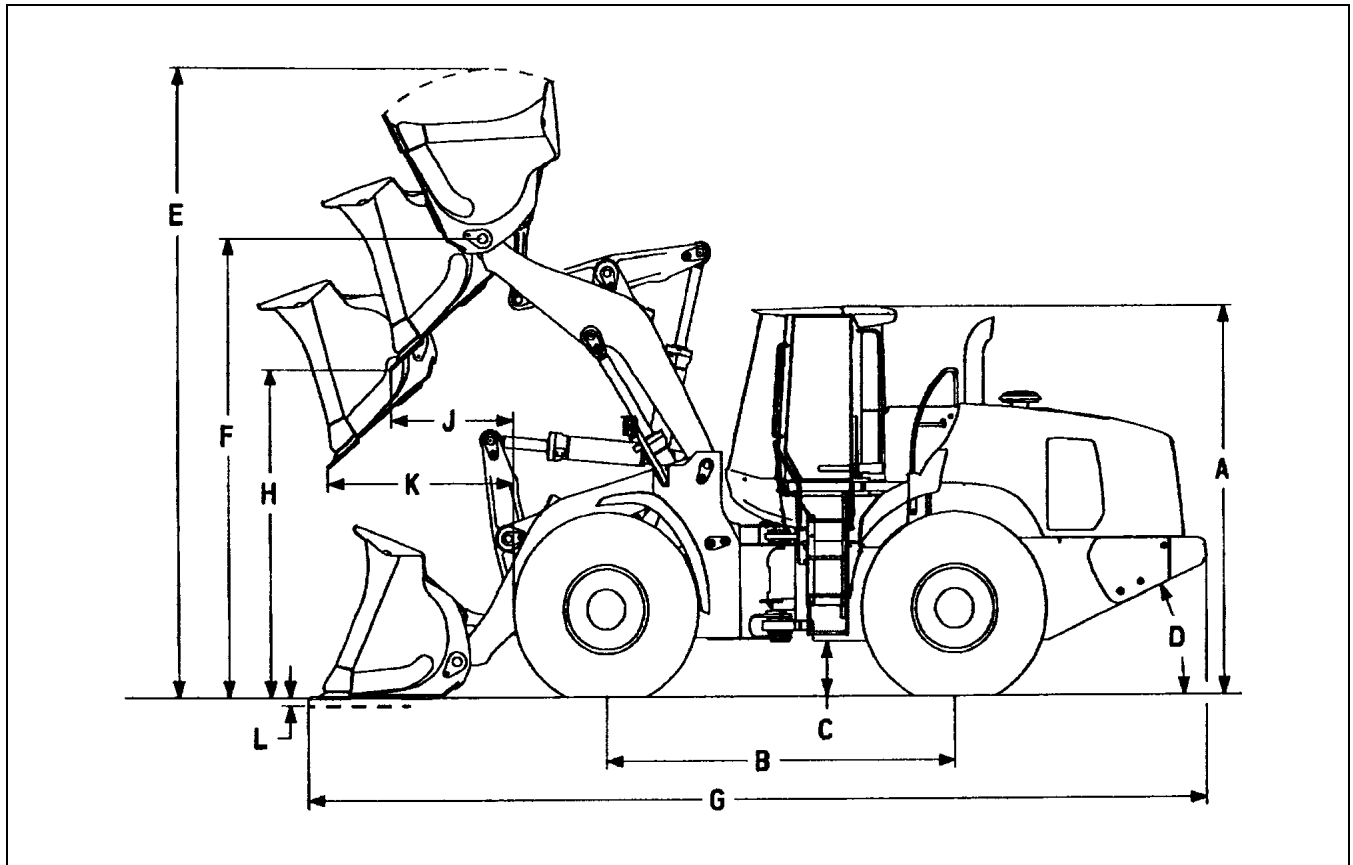
**WARNING:** Whenever carrying out a welding operation on the machine (authorized by the manufacturer and in accordance with manufacturer's instructions) or any repairs on the electrical system, disconnect the B+ and D+ wires from the alternator. When reconnecting, check the markings on the wires. Failure to comply with the following warnings could result in machine damage, serious injury, or death.

**Chapter 8**  
**SPECIFICATIONS**  
**TABLE OF CONTENTS**

SPECIFICATIONS ..... 8-3  
921E Z-Bar DIMENSIONS ..... 8-7  
921E XR DIMENSIONS ..... 8-11  
OPTIONAL EQUIPMENT ..... 8-18  
TORQUE CHARTS ..... 8-20

921E XR DIMENSIONS

921E XR DIMENSIONS WITH 5.00 YD<sup>3</sup> (3.8 M<sup>3</sup>) BUCKET WITH BOLT ON EDGE



BS06C560

Figure 5

ISO bucket capacity

Struck .....	4.60 yd <sup>3</sup> (3.52 m <sup>3</sup> )
Heaped .....	5.25 yd <sup>3</sup> (4.01 m <sup>3</sup> )
Bucket width .....	120.0 in (3048 mm)
<b>A.</b> Height to top of cab .....	145.5 in (3700 mm)
<b>B.</b> Wheelbase .....	134.0 in (3400 mm)
<b>C.</b> Ground clearance .....	20.1 in (510.5 mm)
<b>D.</b> Angle of departure .....	34 degrees
Width -	
Overall w/o bucket .....	117.7 in (2990 mm)
Centerline tread .....	88.6 in (2250 mm)
Turning radius - outside of bucket .....	278.0 in (7061 mm)
Turning angle	
From center .....	40 degrees
Total angle .....	80 degrees
<b>E.</b> Operating height - fully raised w/spillguard .....	253.7 in (6444 mm)
<b>F.</b> Hinge pin height - fully raised .....	191.8 in (4871 mm)
<b>G.</b> Overall length - bucket level on ground .....	364.1 in (9248 mm)
<b>H.</b> Dump height - fully raised, 45 degree dump .....	146.1 in (3712 mm)
<b>J.</b> Bucket reach - fully raised, 45 degree dump .....	50.4 in (1280 mm)
<b>K.</b> Bucket reach - 7 ft 0 in (2.13 m) height, 45 degree dump .....	93.7 in (2380 mm)
<b>L.</b> Dig depth .....	2.7 in (68 mm)

Tipping load - ISO

Machine straight .....	34646 lb (15715 kg)
40 degree turn .....	29489 lb (13376 kg)

Operating load - ISO .....

	14745 lb (6688 kg)
--	--------------------

CLICK HERE TO **DOWNLOAD** THE COMPLETE MANUAL

- Thank you very much for reading the preview of the manual.
- You can download the complete manual from: [www.heydownloads.com](http://www.heydownloads.com) by clicking the link below



- Please note: If there is no response to CLICKING the link, please download this PDF first and then click on it.

CLICK HERE TO **DOWNLOAD** THE COMPLETE MANUAL