



# Operations, Service, and Parts Manual



**PF-150C Paver/Finisher**

---

**Manual No. 1012502-01**

---

**This manual applies to  
Serial Number 115348  
and above.**

CLICK HERE TO **DOWNLOAD** THE COMPLETE MANUAL

- Thank you very much for reading the preview of the manual.
- You can download the complete manual from: [www.heydownloads.com](http://www.heydownloads.com) by clicking the link below



- Please note: If there is no response to CLICKING the link, please download this PDF first and then click on it.

CLICK HERE TO **DOWNLOAD** THE COMPLETE MANUAL

## INTRODUCTION

Thank you for purchasing the LB Performance Model PF-150C Paver/Finisher. We wish you many years of safe and efficient operation of your paver/finisher.

READ THIS MANUAL PRIOR TO OPERATING the unit. This manual is an important part of the paver/finisher and should be kept with the paver/finisher at all times in the dedicated storage container on the paver/finisher. Even though you may be familiar with similar equipment, you **MUST** read and understand this manual before operating this paver/finisher. Reading the manual will help you and others avoid injury and help prevent any damage to the paver/finisher. If this manual becomes lost or damaged, contact your authorized LB Performance dealer immediately to order a replacement **(Contact Information on Page 2-4)**.

This manual is intended as a guide for the safe and efficient use of the paver/finisher. This manual covers the procedures for proper operation and maintenance of the paver/finisher. This manual contains information that was available at the time of printing and are subject to change without notice.

This manual should be used with all related supplemental books, engine and transmission manuals, and parts books. Related service bulletins should be reviewed to provide information regarding some of the recent changes.

If any questions arise concerning this publication or others, contact your local LB Performance dealer for the latest available information.

If you need more information concerning recommended uses for the PF-150C Paver/ Finisher, contact your local LB Performance distributor.

### LB Performance

500 Lincoln County Parkway Ext.

Lincolnton, North Carolina, 28092

#### USA Tel.

+1 - 704-745-2529	(Main Switchboard)
+1 - 745-745-2525	(Service Support)
+1 - 745-745-2520	(Parts Support)

#### Fax:

+1 - 704-745-2530	(Main Fax)
+1 - 704-745-2522	(Parts, Service)
+1 - 704-745-2522	(Warranty)

LB Performance reserves the right to make changes or modifications without prior notice and without incurring any liability to retrofit machines previously shipped from the factory.



VT LeeBoy, Inc. is proud to be ISO 9001 certified. The International Standards Organization (ISO) establishes guidelines to ensure that products and services are safe, reliable and of good quality. ISO certifies companies who demonstrate compliance with all aspects of product safety, customer satisfaction, efficiency, environmental stewardship and social responsibility. Our teams work hard to deliver quality industrial machines that exceed customer expectations and we strive for continuous improvement in everything we do. The VT LeeBoy family of companies is committed to total quality management with a strong focus on meeting customer needs.



VT LeeBoy, Inc., is also proud to be an accredited ANAB manufacturer, which is a certification process comprised of quality standards established by the American National Standards Institute (ANSI) and the American Society for Quality (ASQ). The ANSI-ASQ National Accreditation Board plays an important role in ensuring the safety and quality of goods and services, along with protecting the environment.

**NOTE: It is the responsibility of the owner and operator to make sure that all safety labels are readable and located on paver/finisher as designated by LB Performance.**

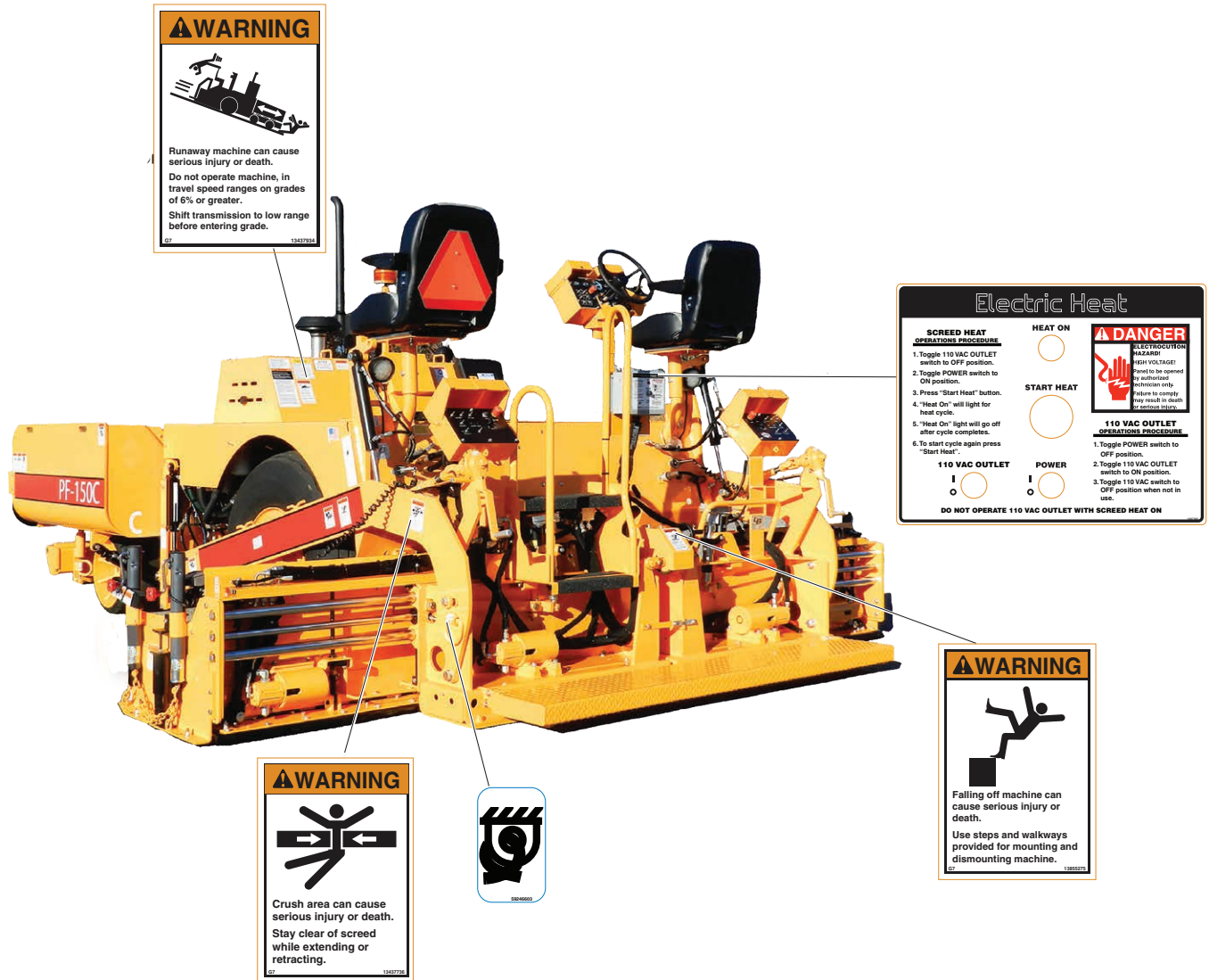


Figure 1-2. Safety Labels and Safety Label Locations (Rear View)

## LIMITED WARRANTY POLICY

### Warranty

1. Subject to the limitations, exclusions, and claims procedures set forth herein, LB Performance warrants [to the first retail purchaser] that this product will be free from [substantial] defects in materials and workmanship during the warranty period.
2. If a defect in material or workmanship is found, your authorized LB Performance Dealer is to be notified during the warranty period. LB Performance and its authorized Dealer will repair or replace any part or component of the unit or part that fails to conform to the warranty during the warranty period.
3. The warranty period will begin on the initial start-up, training and delivery of the unit by the Dealer to the customer, and will expire after twelve (12) months following the delivery of the paver/finisher to the first retail purchaser. (See Dealer for additional warranty.)
4. Manufacturer Warranties: Engines are warranted by their manufacturers and may have warranty coverage that differs from that of LB Performance. LB Performance does not warrant any engine.
5. Replacement parts furnished by LB Performance are covered for the remainder of the warranty period applicable to the unit or component in which such parts are installed.
6. LB Performance has the right to repair any component or part before replacing it with a new one.
7. All new replacement parts purchased by a LB Performance dealer will carry a six-month warranty.
8. This Limited Warranty is governed by the laws of the State of North Carolina.

THE FOREGOING WARRANTY IS EXCLUSIVE AND IN LIEU OF ALL OTHER EXPRESSED, STATUTORY AND IMPLIED WARRANTIES APPLICABLE TO UNITS, ENGINES, OR PARTS INCLUDING

WITHOUT LIMITATION, ALL IMPLIED WARRANTIES OF MERCHANTABILITY OR FITNESS FOR ANY PARTICULAR USE OR PURPOSE OR AGAINST INFRINGEMENT.

### Limitations

LB Performance has no obligation for:

1. Any defects caused by misuse, misapplication, negligence, accident, or failure to maintain or use in accordance with the most current operating instructions.
2. Unauthorized alterations.
3. Defects or failures caused by any replacement parts or attachments not manufactured by or approved by LB Performance.
4. Failure to conduct normal maintenance and operating service including, without limitation, providing lubricants, coolant, fuel, tune-ups, inspections, or adjustments.
5. Unreasonable delay, as established by LB Performance, in making the applicable units or parts available upon notification of a service notice ordered by same.
6. Warranty Responsibility: The warranty responsibility on all engines rests with the manufacturer of the engine.
7. Warranty and Parts Support: LB Performance may have support agreements with some engine manufacturers for warranty and parts support. However, LB Performance does not warrant the engine.
8. This Limited Warranty sets forth your sole remedy in connection with the sale or use of the LB Performance product covered by this Limited Warranty.
9. This Limited Warranty extends only to the first retail purchaser, and is not transferable.
10. In the event any portion of this Limited Warranty shall be determined to be invalid under any applicable law, such provision shall be deemed null and void and the remainder of the Limited Warranty shall continue in full force and effect.

## EQUIPMENT OPTIONS

### 150 WL Screed Extensions

Optional 12-inch (305mm) extensions bolt onto the standard hydraulic screed extensions on either or both ends of the basic screed to provide extended paving widths up to a recommended maximum of 16 feet (4.87m). When properly installed, the 150 WLE screed extensions will produce a finished mat of the same texture and compaction as the basic WLE Screed.

### Sonic Tracker Sensor Grade Control

Sensor measures and controls the elevations of the screed by emitting sound waves and listening for echoes. The tracker measures distance and controls the grade of the road surface. It also utilizes a bail to compensate for rapid air temperature changes.

### TopCon V Option

The TopCon V is a non-contact control system that combines both elevation and slope control into a simple, easy-to-use package. The system's primary function is to provide screed control so paving material is placed into position at the correct elevation and slope. Components making up the system include two Control Boxes, two Sonic Tracker II TMs and one Slope Sensor.

### Auger and Tunnel Extension

These are used individually or in pairs on either side of the machine to improve material flow to the outer ends of the screed when paving at constant extended widths.

### Operator's Umbrella

This accessory provides a 54-inch (1372mm) square operator's umbrella to accommodate the Primary Control Console on the machine. Mounting hardware is included with the umbrella. A second unit can also be purchased for the secondary control console.

## LUBRICATION

Lubrication is an essential part of preventive maintenance to extend the life of the PF-150C Paver/Finisher. Periodic lubrication of moving parts minimizes the possibility of mechanical failures.

Specific instructions regarding types of lubricants and frequency of their application must be explicitly followed. This is important because each component requires specific lubricants and maintenance schedules. **(Page 2-14 and 2-15)** Follow the maintenance schedules to maintain a regular maintenance routine. The suggested intervals are based on average operating conditions. When working in extremely severe, dusty or wet operating conditions, more frequent lubrication may be necessary.

Check all oil levels with the machine parked on a level surface and while the oil is cold, unless otherwise specified.

All grease fittings are SAE Standard, unless otherwise indicated. Non-sealed fittings should be greased until grease visibly overflows from the fitting.

Over lubrication on non-sealed fittings will not harm the fittings or components, but under lubrication will lead to shortened machine life.

Unless otherwise indicated, items not equipped with grease fittings (linkages, pins, levers, etc.) should be lubricated with oil once a week. Motor oil, applied sparingly, will provide the necessary lubrication and help prevent the formation of rust. An anti-seize compound may be used if rust has not formed. Otherwise, the component must first be cleaned. Grease fittings that are worn and functioning improperly must be replaced.

To prevent minor irregularities from developing into serious conditions, several other services or checks are recommended for the same intervals as the periodic lubrication:

- Thoroughly wash all fittings, caps, plugs, etc. with non-flammable, non-toxic cleaning solution before servicing. This will prevent dirt from entering components while lubricating.
- Lubricants must be at operating temperature when draining.
- Visually check the entire unit to ensure capscrews, nuts, and pins are properly secured.
- Check capscrews and nuts for proper torque. Tighten any that are loose and make thoroughly inspect.

## HYDRAULIC FITTINGS

### Tightening Flare Type Tube Fittings

1. Check the flare and flare seat for defects that might cause leakage.
2. Align tube with fitting before tightening.
3. Lubricate connection.
4. Tighten swivel nut (by hand) until snug.
5. To prevent twisting the tube(s), use two wrenches. Place one wrench on the connector body to hold in place and tighten the swivel nut to the torque shown in **Table 2-11**.

**NOTE: The torque values shown are based on lubricated connections as in assembly.**

*Table 2-11. Torque Specifications For Flare Type Tube Fittings*

TUBE SIZE OD	NUT SIZE (ACROSS FLATS)	TORQUE VALUE		RECOMMENDED TURNS TO TIGHTEN (AFTER FINGER TIGHTENING)	
		(N•m)	(Lb-Ft)	(N•m)	(Lb-Ft)
3/16	7/16	8	6	1	1/6
1/4	9/16	12	9	1	1/6
5/16	5/8	16	12	1	1/6
3/8	11/16	24	15	1	1/6
1/2	7/8	46	34	1	1/6
5/8	1	62	46	1	1/6
3/4	1 1/4	102	75	3/4	1/8
7/8	1 3/8	122	90	3/4	1/8



ITEM NO.	CONTROL NAME	FUNCTION
13	Positive Traction	<b>NOTE: Positive traction is intended for limited use. It should only be turned ON when paving on loose bases or slippery surfaces. It should be turned OFF in tight steering situations (i.e., when paving cul-de-sacs or pivot steering).</b>  The Positive Traction Switch is a two-position switch (ON/OFF) used to turn the positive traction features on or off and prevent loss of traction effort when paving by producing limited slip between the Positive traction drive units.
14	Motor Shift	LOW/HIGH motor shift switch changes motor speed.
15	Digital Hour Meter	The hour meter displays the number of hours the PF-150C engine has been operating.
16	Plug	Unused
17	Flowgate Switches	Two separately operated (Left hand and Right hand), electrically controlled, adjustable flow gates meter material delivery to the augers. The gates are located in the conveyor tunnel entry at the rear of the hopper.
18	Water Temp Gauge	Displays engine coolant temperature.
19	Volt Gauge	Displays the condition of the battery charging system.
20	Tachometer	Displays engine speed in revolutions per minute (RPM).
21	Oil Pressure Gauge	Displays engine oil pressure in pounds per square inch (psi).
22	Oil Temp Gauge	Displays temperature of oil in the hydraulic system.

3

## Direction-Speed Lever

The Direction-Speed lever is used to control the direction of paver travel. FORWARD, NEUTRAL and REVERSE zones vary the speed of travel within the selected speed range. Unlock the lever from NEUTRAL by pulling UP on the T-Handle and moving the lever to the FORWARD or REVERSE position as desired. The lever will lock automatically when returned to NEUTRAL if the T-Handle is not lifted. The further the Direction-Speed lever is moved away from NEUTRAL, the faster the machine will travel.

**WARNING** Before entering steep grades, stop the machine by placing the Direction-Speed lever into NEUTRAL and shift the transmission to LOW. The momentum of the machine could overcome the braking effect of the hydrostatic drive on grades of 6% or more in the HIGH motor shift position, which could result in a runaway machine. If the dynamic braking of the hydrostatic drive should fail to stop or hold the machine, return the Direction-Speed lever to NEUTRAL and apply the PARK BRAKE. (A 6% grade is 6 feet (1.83m) of rise in 100 feet (30.5m) of run. From the driver's seat, this may be difficult to judge. If in doubt, always use LOW gear.)

**NOTICE** The Direction-Speed lever must be in NEUTRAL to start the engine.



**Figure 3-2. Direction-Speed Lever**  
1 - Direction-Speed Lever Location

## Control Console



**4**

Figure 4-3. Control Console

## Auger/Conveyor Sensors

The Auger/Conveyor sensors (**Figure 4-20**) monitor and control pile height of material at the discharge end of the augers. To set desired pile height, press the positive (+) and negative (-) dome switches at the same time. The sensor will automatically maintain the proper pile height. To adjust pile height based on paving needs, push the positive (+) or negative (-) switches to raise or lower by .2 inches (.5 cm).



**Figure 4-19. Auger/Conveyor Sensor**

If the sensor loses the asphalt pile or goes outside of the sensing range, three lights will illuminate up and down the LED light bar. If this happens, perform either of the following to fix the problem:

- Manually adjust the pile height until it is back in the sensor's operating range.
- Adjust the location of the sensor until the pile height is within the sensor's working range.

The switch for the washdown pump is located on the right front side cover. The reel is conveniently located in front of the tire under the deck plate on the right side of the paver. Turn switches ON immediately before washdown is to begin and OFF immediately after it is completed.

Spray down all surfaces that come in contact with paving material. Then use a scraping device to help remove accumulated material. A long-handled scraping device may be necessary to reach limited access areas.

Start at the front of the machine and work rearward to avoid missing any areas. Some areas requiring special attention are as follows:

## Push Rollers

- Remove all built-up material on the rollers and mounts.
- Rotate the rollers while cleaning and soak bearing ends to maintain free rotation.

## Hopper Surfaces and Flow Gates

- Clean all hopper surfaces thoroughly.
- Lower flow gates to clean the surfaces and raise to gain access to the conveyor tunnels.

**⚠ WARNING DO NOT enter the hopper while the engine is running.**

## Conveyors

- Raise hopper apron to remove any material that has accumulated around the idler shaft and front conveyor bearings.
- Stand on the ground at a safe distance and spray moving conveyor chains and bars.
- Clean rear conveyor drive sprockets and tunnel areas thoroughly.
- Run conveyors after washdown to carry release agent into conveyor return areas under the floor plates to help dissolve hidden asphalt.

**⚠ WARNING DO NOT run conveyors while using scraper to remove paving material.**

**⚠ WARNING There should be a qualified operator at the control station at all times during this procedure. Stand in full view of the operator while cleaning.**

**⚠ WARNING DO NOT enter the hopper while the engine is running.**

## Augers, Auger Bearings, Auger Tunnels and Auger Guards

- Clean thoroughly.
- Scrape out accumulated material around bearings.
- All material contact surfaces must be cleaned down to the metal to avoid quick buildup when paving starts again.

**⚠ WARNING DO NOT stand in the auger trough area.**

**⚠ WARNING DO NOT run augers while using scraper to remove paving material.**

**⚠ WARNING There should be a qualified operator at the Control Station at all times during this procedure. Stay in full view of the operator while cleaning.**

## Screed

Face and bottom plates should be clean and smooth on both the main and extendable sections.

## Edger Plates

Remove and clean so they slide freely into the guides when reassembled.

**⚠ WARNING DO NOT disassemble or assemble edger plate assemblies on the machine while augers are running.**

## Deck Areas

- Remove all paving material.
- Carefully remove solvent residue so walking surfaces do not remain slippery.

## HYDRAULIC SYSTEM

### Hydraulic Oil Check Level/Fill

Refer to the hydraulic oil specifications on **Page 2-18** for more detailed information.

1. Start the engine and allow the machine to achieve normal operating temperature.
2. Park on a level surface with the parking brake applied.
3. Open the hydraulic oil tank access door on the deck.



**Figure 5-21. Hydraulic Oil Fill Cap**

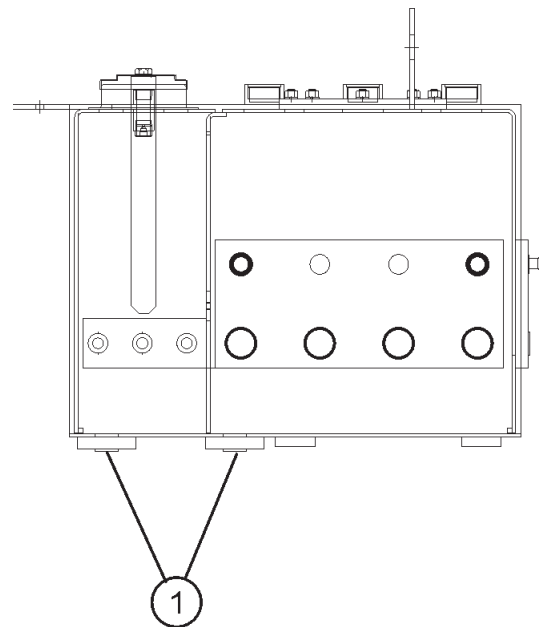
4. Remove the fill cap on top the hydraulic tank. Note that the dipstick is attached to the cap or lid and is removed as a single assembly. **(Figure 5-21)**
5. Wipe off the dipstick with a clean rag or paper towel.
6. Insert the dipstick back into the tank as far as the cap will allow.
7. Pull the dipstick out of the tank and observe the reading. The hydraulic oil must be present to the correct level mark on the dipstick.
8. If necessary, add hydraulic oil to the tank directly through the opening at the fill cap. Fill the tank to the FULL mark.
9. **DO NOT OVERFILL THE TANK.** Leave approximately 25mm (1 inch) of space for expansion of hot oil.

10. Screw the fill cap/dipstick assembly back onto the hydraulic tank opening.
11. Clean any spilled oil with a clean rag or shop cloth.
12. CLOSE and secure the left-hand hood.

### Draining the Hydraulic System

The hydraulic system should be drained and all filters replaced every six months, or 500 operational hours, whichever comes first, as outlined below. It's important to realize that once the hydraulic system has been drained, the machine is completely disabled until the system has been refilled and is back on line.

1. Park the machine on a level surface with the parking brake applied.
2. Shut down the engine and allow the hydraulic oil to cool.
3. Obtain a container of sufficient capacity to hold the oil to be drained from the hydraulic tank, approximately 24 gallons (91 liters).
4. Open the deck hood to access the hydraulic oil tank.
5. Remove the hydraulic tank fill cap. Dipstick is attached underneath the cap. **(Figure 5-21)**
6. Remove the oil drain plug on the bottom of the hydraulic tank. **(Figure 5-22)**



**Figure 5-22. Drain Plugs**

One-Line, Electrical System - Sheet 1 of 2

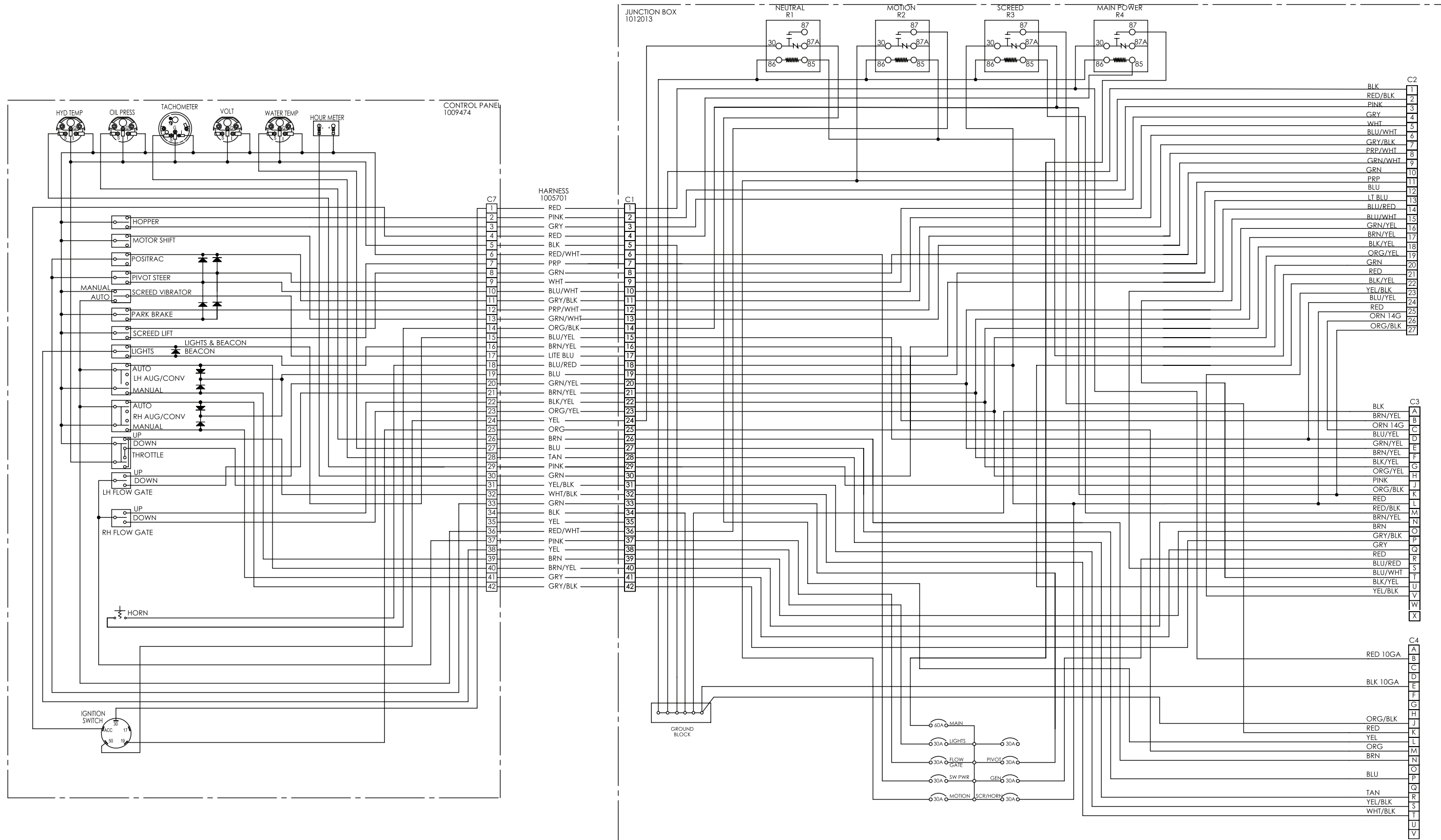


Figure 6-1.

Control Panel - Sheet 2 of 2

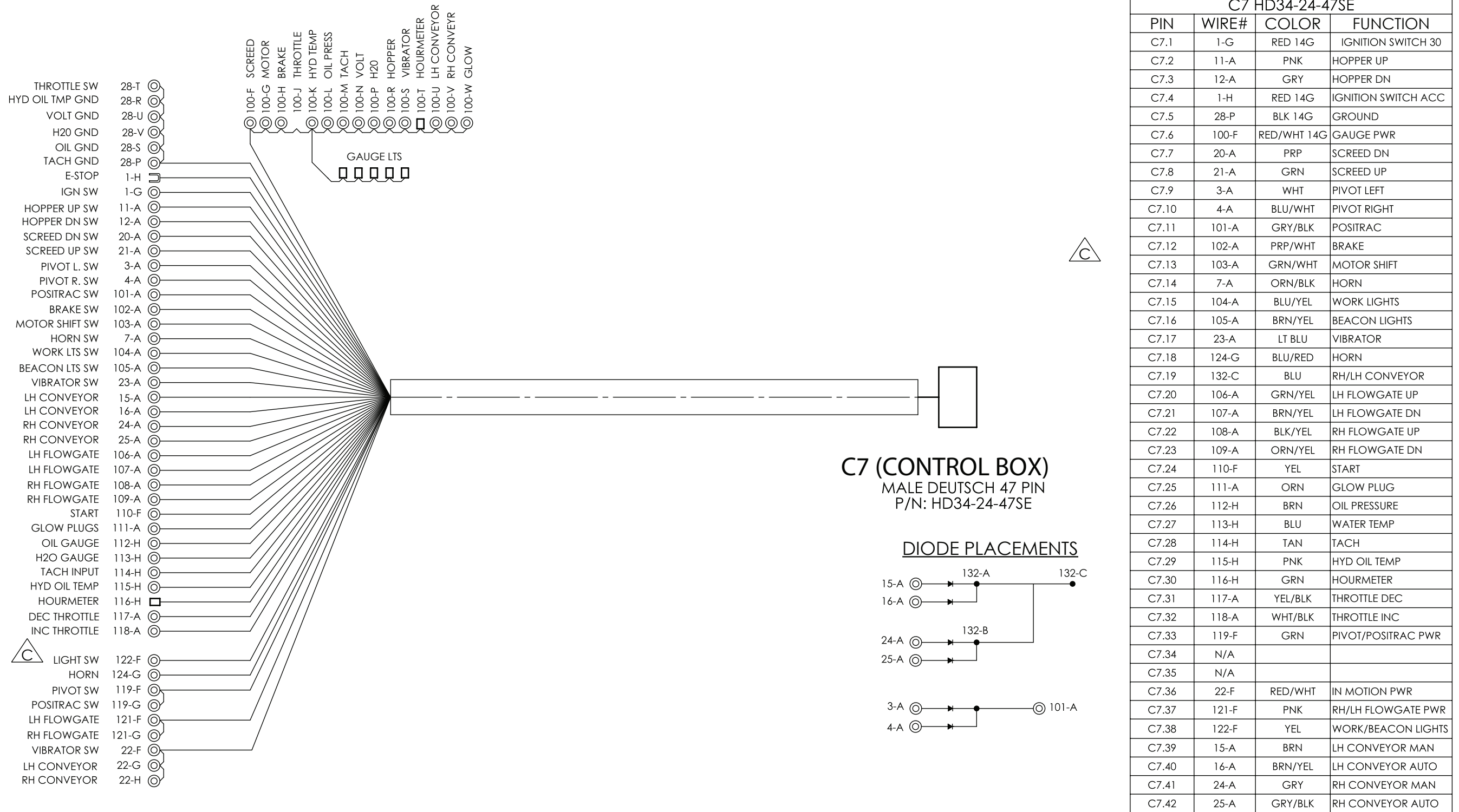
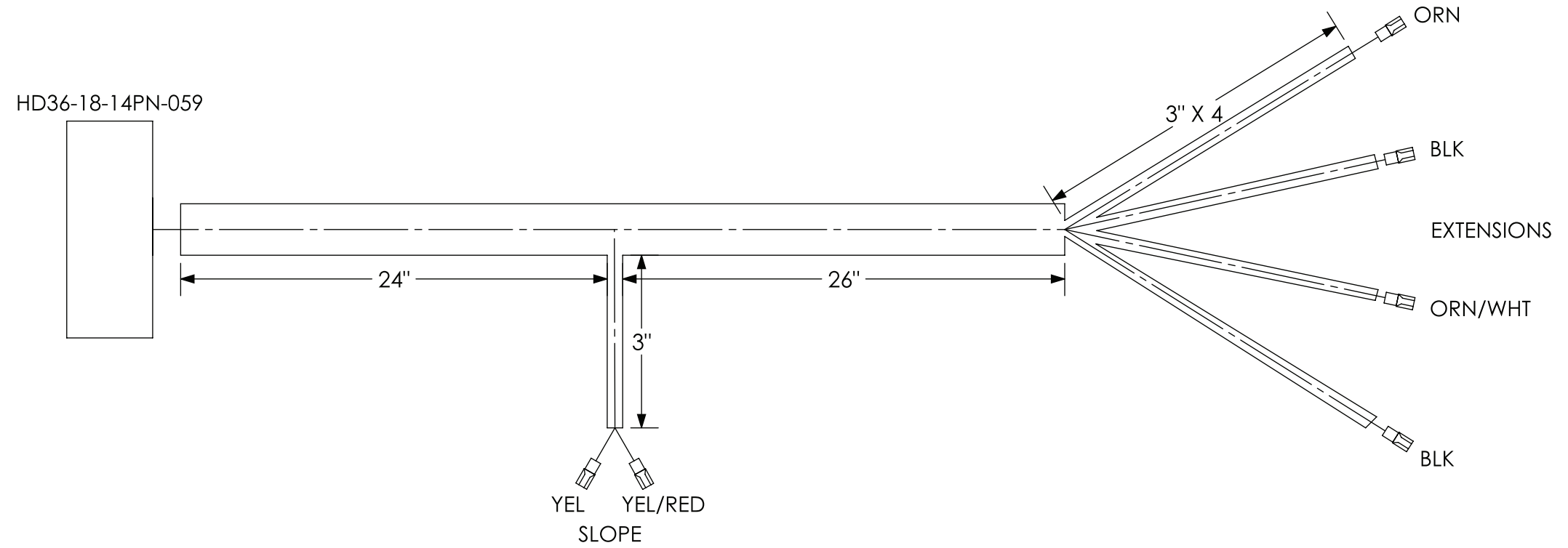


Figure 6-6.

**Harness, Valve, LeFT**

PIN	COLOR	FUNCTION
A	N/A	
B	N/A	
C	YEL	SLOPE UP
D	YEL/RED	SLOPE DOWN
E	N/A	
F	N/A	
G	N/A	
H	N/A	
J	ORN	EXTENSION IN
K	ORN/WHT	EXTENSION OUT
L	BLK	GROUND
M	N/A	
N	N/A	
P	N/A	



**Figure 6-11.**

CLICK HERE TO **DOWNLOAD** THE COMPLETE MANUAL

- Thank you very much for reading the preview of the manual.
- You can download the complete manual from: [www.heydownloads.com](http://www.heydownloads.com) by clicking the link below



- Please note: If there is no response to CLICKING the link, please download this PDF first and then click on it.

CLICK HERE TO **DOWNLOAD** THE COMPLETE MANUAL

Left / RH Jumper Harness, Screed

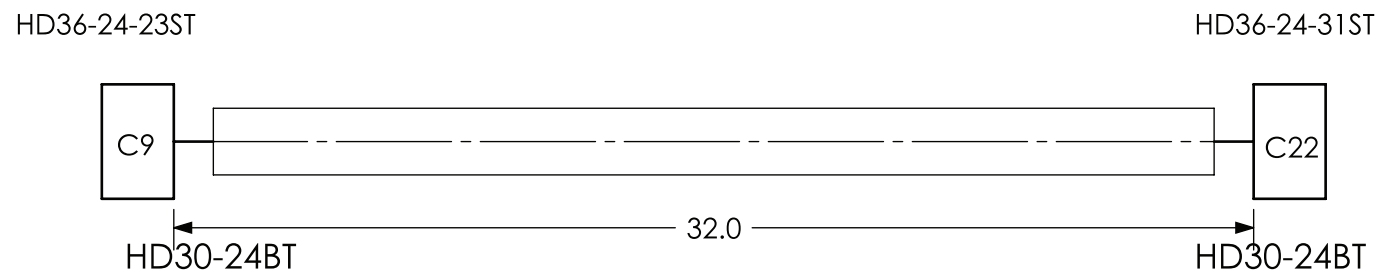
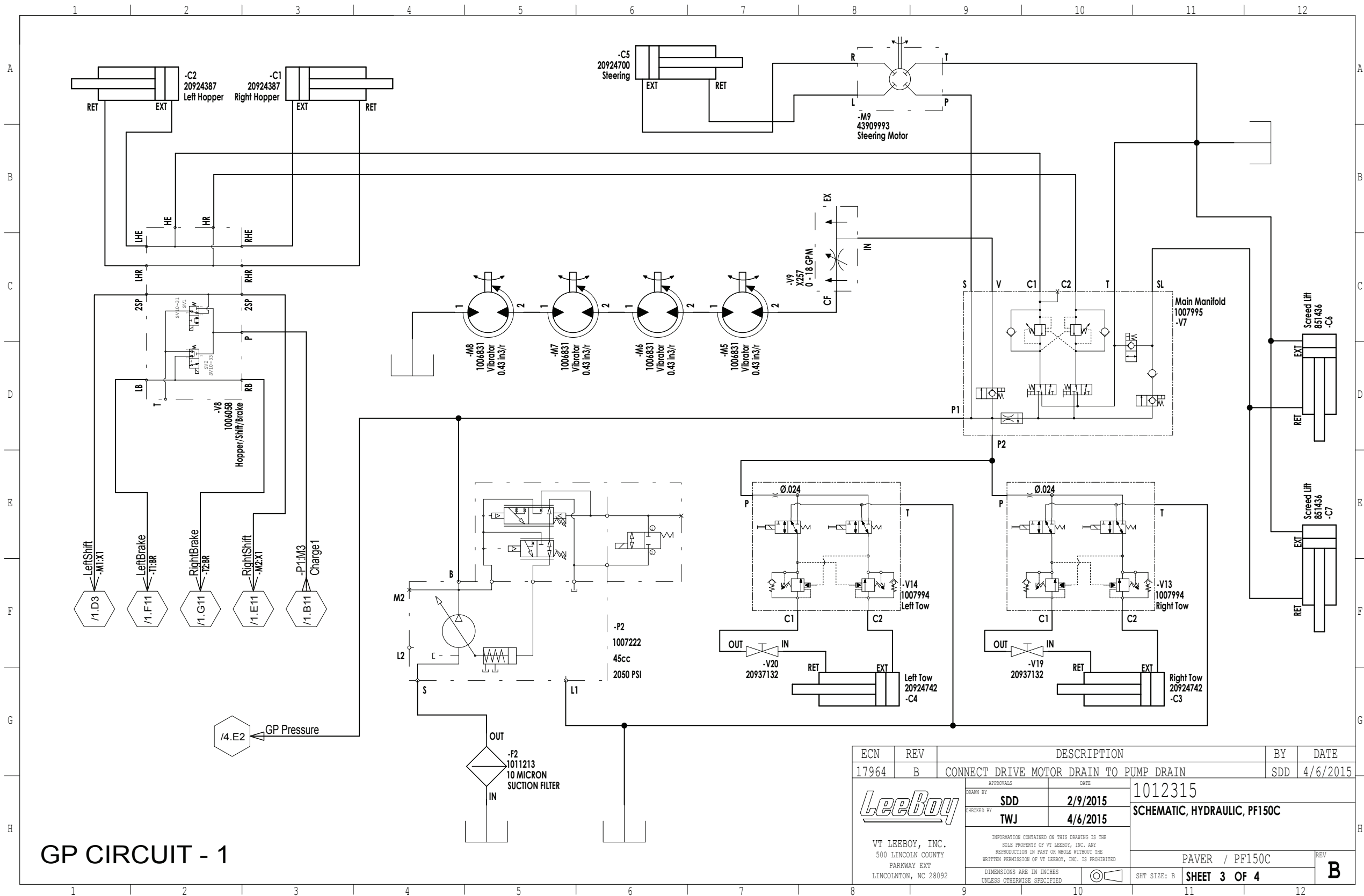


Figure 6-16.

PIN	COLOR	FUNCTION
1	RED 14G	POWER
2	BLK 14G	GROUND
3	BLU/RED	LH TUNNEL IN
4	BLU/WHT	LH TUNNEL OUT
5	BRN	AUGER POT
6	N/A	
7	BRN/YEL	AUGER OVERRIDE
8	BRN/YEL	LHFLOW GATE DN
9	GRN/YEL	LH FLOW GATE UP
10	BLK/YEL	RH FLOW GATE UP
11	ORN/YEL	RH FLOW GATE DN
12	N/A	
13	N/A	
14	N/A	
15	N/A	
16	N/A	
17	N/A	
18	N/A	
19	RED/BLK	ESTOP
20	N/A	
21	BLU/RED	LH TOE UP
22	BLU/WHT	LH TOE DN
23	N/A	
24	N/A	
25	RED/WHT	ESTOP
26	ORN/BLK	HORN
27	N/A	
28	N/A	
29	N/A	
30	N/A	
31	N/A	

General Purpose 1 Hydraulic Schematic (3 of 4)



GP CIRCUIT - 1

ECN	REV	DESCRIPTION	BY	DATE
17964	B	CONNECT DRIVE MOTOR DRAIN TO PUMP DRAIN	SDD	4/6/2015
APPROVALS		DATE	1012315	
DRAWN BY		SDD	2/9/2015	
CHECKED BY		TWJ	4/6/2015	
LeeBoy		SCHEMATIC, HYDRAULIC, PF150C		
VT LEEBOY, INC. 500 LINCOLN COUNTY PARKWAY EXT LINCOLNTON, NC 28092		PAVER / PF150C		
DIMENSIONS ARE IN INCHES UNLESS OTHERWISE SPECIFIED		SHT SIZE: B	SHEET 3 OF 4	
				REV B

6

## Push Roller Group Parts List

Item No.	Part Number	Qty.	Description	Remarks
1	13763149	1	Oscillating Beam Assembly	
2	300-16	1	Washer, Flat, SAE, 1	
3	100-12-10-44-5	8	CSHH, 3/4-10 X 2.75, GR5	
4	20930848	4	Bearing	
5	21057864	2	Push Roller Weldment	
Ref	95929683	1	Pin, Cotter	
7	204-12-10-5	8	Nut, Lock, Stover, 3/4-10, GR5	
8	20930939	1	Com-16 Spherical Plain Bearing	
9	20931036	1	Spherical Bearing	
10	15621725	1	Oscillating Beam 8"	
11	15565252	1	Pad-Lower	
12	15565245	1	Pad-Upper	
13	113-6-16-8	4	Set S, Hskt, Cup, 3/8+16X0.5	
14	20298188	1	Bracket, Mounting	
15	20962239	2	Push Roller Shaft	
16	20225520	1	Pin Weldment, Push Roller	

## Auger Group - 2 of 2 -Parts List (Cont.)

Item No.	Part Number	Qty.	Description	Remarks
42	302-6	18	Washer, Lock, 3/8	
43	100-6-16-12-5F	8	CSHH, 3/8-16 X 0.75, GR5, FT	
44	100-6-16-28-5	2	CSHH, 3/8-16 X 1.75, GR5	
45	100-6-16-24-5	2	CSHH, 3/8-16 X 1.5, GR5	
47	106-6-16-24-5F	4	Crg Bolt, 3/8-16 X 1.5, GR5, FT	
48	200-6-16-5	4	Nut, Hex, 3/8-16, GR5	
49	106-8-13-28-5F	8	Crg Bolt, 1/2-13 X 1.75, GR5, FT	
50	300-8	28	Washer, Flat, SAE, 1/2	
51	302-8	28	Washer, Lock, 1/2	
52	200-8-13-5	12	Nut, Hex, 1/2-13, GR5	
53	100-8-13-28-5	12	CSHH, 1/2-13 X 1.75, GR5	
54	100-8-13-22-5F	8	CSHH, 1/2-13 X 1.375, GR5, FT	
55	202-6-16-5	2	Nut, Hex, Jam, 3/8-16, GR5	
56	114-6-16-32	2	Set Screw, Square Head, Cup, 3/8-16X2	

## Tank Group Parts List

Item No.	Part Number	Qty.	Description	Remarks
1	13712591	1	Hydraulic Tank Assembly	
2	20988465	1	Fuel Tank	
3	1005579	1	Weldment, Battery Tray	
4	620050	1	Cap, Breather	
5	1002184-28	1	Sender, Temp, 100-250° F, 06 Mp	

## Control Group - Steering Parts List

Item No.	Part Number	Qty.	Description	Remarks
1	1005491	1	Control Pedestal Weld, Console	
2	1012076	1	Weldment, Mount, Traction Control	
3	1012075	1	Control, Traction, Lnr, w/Neutral Switch (Right)	
4	20214342	1	Cover Weldment	
5	1009474	1	Assembly, Control Panel	
6	43909993	1	Motor, Hydraulic, Power Steering	
7	300040	1	Steering Column, 6.00	
8	300030	1	Wheel, Steering	
9	1005701	1	Jumper Harness, Cp To Junc	
10	1012013	1	Assembly, Junction Box, PF150C	
11	1006284	1	Cover, Junction Box, PF-150B	
12	1006178	1	Single Gang, Weatherproof Outlet Box	
13	1006177	1	125V, 20 Amp, Weatherproof Electrical Outlet	
14	1006179	1	Cover, Single Gang, Weatherproof Outlet Box	
15	920130	1	Push/Pull Cable, 123" X 3" Stroke	
16	100-5-18-16-5	3	CSHH, 5/16-18 X 1, GR5	
17	302-5	3	Washer, Lock, 5/16	
18	300-5	3	Washer, Flat, SAE, 5/16	
19	100-6-16-16-5F	8	CSHH, 3/8-16 X 1, GR5, FT	
20	302-6	9	Washer, Lock, 3/8	
21	202-12-16-5	1	Nut, Hex, Jam, 3/4-16, GR5	
22	302-4	32	Washer, Lock, 1/4	
23	100-4-20-8-5F	8	CSHH, 1/4-20 X 0.5, GR5, FT	
24	300-6	12	Washer, Flat, SAE, 3/8	
25	100-6-16-44-5	1	CSHH, 3/8-16 X 2.75, GR5	
26	200-6-16-5	3	Nut, Hex, 3/8-16, GR5	
27	300-4	42	Washer, Flat, SAE, 1/4	
28	100-4-20-16-5F	18	CSHH, 1/4-20 X 1, GR5, FT	
29	200-4-20-5	22	Nut, Hex, 1/4-20, GR5	
30	100-4-20-12-5F	4	CSHH, 1/4-20 X 0.75, GR5, FT	

## Washdown Group Parts List

Item No.	Part Number	Qty.	Description	Remarks
Ref	1011959	1	Harness, Spray Down Kit	
2	31959	2	Fitting, Str, 06Mp-06Hb, Push-On	
3	1315031	1	-6 Jic X -6 O-Ring X 90 Deg	
4	480160	1	Valve, Ball 3/8" Thd	
5	140030FN	1	Filler Neck	
6	140030FL	1	Cap, Fuel Lockable	
7	988731	1	Tank, Citrus, 7 Gal, Poly	
8	1011781	1	Mount, Spraydown Pump, Facet	
9	2120-6-2-B	1	Fitting, Elbow, Brass, 90 Deg, -6 Pl / -2 Nptf	
10	5406-6-2	1	Adapter, Reducer, Pipe, -6 / -2	
11	5404-6-2	1	Adapter, Hex Pipe Nipple, -6 Nptf / -2 Nptf	
12	1603-6-6-6	1	Adapter, Union, Triple Swivel, -6 Npsm/-6 Npsm/-6 Npsm	
13	1011844	1	Switch, Pressure, 10 PSI Rise	
14	1011738	1	Pump, Spray Down Facet	
15	920220	1	Handle & Nozzle, Fuel Wash-Down	
Ref	901210A	1	Nozzle, Fuel Washdown	
16	920200	1	Reel, w/Hose, Spray Down, .312 Hose	
17	20934014	1	Switch	
18	300-4	16	Washer, Flat, SAE, 1/4	
19	100-4-20-16-5F	8	CSHH, 1/4-20 X 1, GR5, FT	
20	302-4	8	Washer, Lock, 1/4	
21	200-4-20-5	8	Nut, Hex, 1/4-20, GR5	
22	853211085	1	Fitting, 90° 06Mp-06Mp	
Ref	1011959	1	Harness, Spray Down Kit	

## Electric Screed Parts List

Item No.	Part Number	Qty.	Description	Remarks
1	1008531	1	Weldment, Screed Frame (Left)	
2	1008156	1	Assembly, Extension W/ Slide (Right)	
3	1008133	1	Assembly, Extension W/ Slide (Left)	
4	1005307	2	Deck Cover Plate, Main, 150-WLE	
5	1010382	1	Assembly, Screed, Control Box (Left)	
6	1011903	1	Assembly, Screed, Control Box (Right)	
7	20946877	2	Linear Actuator	
8	20922969	2	3/4 X 1.25 Machine Bushing Lt 18	
9	1005290	2	Thickness Adjuster, Screed	
10	1008441	2	Plate, Indicator	
11	20957601	2	Slope Indicator Plate	
12	1006457	1	Assembly, Walkboard, 150-WLE	
13	20978904	2	Weldment, End Cover	
14	1009711	2	Plate, Strike Off	
15	1009712	2	Shim, Strike Off	
16	1008595	1	Hose Kit, Screed	
17	302-6	25	Washer, Lock, 3/8	
18	200-6-16-5	10	Nut, Hex, 3/8-16, GR5	
19	100-5-18-16-5	8	CSHH, 5/16-18 X 1, GR5	
20	20923033	2	3/4 X 1.25 Machine Bushing Lt 14	
21	200-8-13-5	28	Nut, Hex, 1/2-13, GR5	
22	100-8-13-28-5	12	CSHH, 1/2-13 X 1.75, GR5	
23	302-4	22	Washer, Lock, 1/4	
24	100-4-20-10-5F	4	CSHH, 1/4-20 X 0.625, GR5, FT	
25	300-4	10	Washer, Flat, SAE, 1/4	
26	100-4-20-8-5F	4	CSHH, 1/4-20 X 0.5, GR5, FT	
27	302-5	6	Washer, Lock, 5/16	
28	105-6-16-24-F	6	CSFHS, 3/8-16 X 1.5, FT	
29	100-8-13-32-5	8	CSHH, 1/2-13 X 2, GR5	
Ref	1012006	1	Harness,Valve (Left)	
Ref	1011912	1	Harness, Valve (Right)	

## Extension Assembly (Right) Parts List

Item No.	Part Number	Qty.	Description	Remarks
1	1008161	1	Extension, Frame, 150-WLE	
2	1010326	1	Weldment, Hinge, Extension	
3	854447	1	Shaft, Ø.688 X 43.50	
4	1008742	1	Plate, Spacer	
5	1009831	1	Weldment, Extension, Angle Of Attack (Right)	
6	1010314	1	Weldment, Heat Box, Extension (Right)	
7	1010322	1	Weldment, Cover, Heat Box	
8	984580	2	Assembly, Ext Slide Pivot	
9	1008146	2	Slide Adjuster Assembly	
10	1006110	1	Slide Adjuster Assembly, Primary, 150-WLE	
11	20979860	2	Sprocket	
12	1008150	1	Spacer	
13	1008149	1	Spacer	
14	20960217	1	11X Ratchet Arm Assembly	
15	1008152	1	Chain	
16	1008609	2	Weldment, Cam	
17	1008607	1	Vibrator Assembly w/ Mount & Motor (Right)	
18	1008695	1	Plate, Heat Element Backup	
19	987890SRV	1	Element, Heating, 1000W, 220V, 41"	
20	1009506	1	Rod, Extension Height Indicator	
21	1009503	1	Plate, Extension Depth Indicator	
22	100-6-16-16-5F	4	CSHH, 3/8-16 X 1, GR5, FT	
23	202-6-16-5	4	Nut, Hex, Jam, 3/8-16, GR5	
24	100-6-16-12-5F	18	CSHH, 3/8-16 X 0.75, GR5, FT	
25	100-8-13-28-5	6	CSHH, 1/2-13 X 1.75, GR5	
26	302-6	20	Washer, Lock, 3/8	
27	118-8-24-3/8x16	2	Shoulder Bolt, Ø1/2 X 1.5L, 3/8 X 16	
28	200-6-16-5	6	Nut, Hex, 3/8-16, GR5	
29	118-8-28-3/8x16	1	Shoulder Bolt, Ø1/2 X 1.75L, 3/8 X 16	
30	300-6	1	Washer, Flat, SAE, 3/8	
31	302-8	7	Washer, Lock, 1/2	
32	100-8-13-40-5	1	CSHH, 1/2-13 X 2.5, GR5	
33	100-7-14-32-5	6	CSHH, 7/16-14 X 2, GR5	
34	300-7	6	Washer, Flat, SAE, 7/16	
35	200-7-14-5	6	Nut, Hex, 7/16-14, GR5	
36	301-6	4	Washer, Flat, USS, 3/8	

## Screed Control Panel (Left) Parts List

Item No.	Part Number	Qty.	Description	Remarks
1	1006050	1	Plate, Screed Control Panel	
3	851392	4	Switch, Toggle, 3-Pos,Spdt, Mom	
4	1006010	1	Switch, Toggle, 3-Pos, 2 Pol, Mom (On)-(Off)-(On)	
5	37521	1	Switch, Toggle, 3-Pos, 2 Pol, Mom	
6	20933875	1	Hole Plug (1/2 Hole)	
7	982249	1	Switch, Push Button	
8	1011261	1	Switch, Emergency Stop No Logo, 1-Nc	
9	1010077	1	Rheostat, 35 Ohm, 25 Watt	
10	20933453	1	Knob	
11	1006046	1	Connector, Deutsch, Hd34-18-14Sn	
12	981916	1	Connector, 31-Pin, Recpt, Hd34-24-31, Deutsch	
Ref	1006051	1	Decal, Left Control Panel, Screed	

## Screed Hose Kit Parts List (Cont.)

Item No.	Part Number	Qty.	Description	Remarks
39	6401-6-4-Ox060	1	Adapter, Straight, -6 O-Ring / -4 Nptf W/ .060 Orifice	
40	6/6/6500	1	Adapter, Elbow, 90 Deg, Swivel, -6 Jic/-6 Jic	
41	8/8/6500	2	Adapter, Elbow, 90 Deg, Swivel, -8 Jic/-8 Jic	
42	6602-6-6-6	2	Adapter, Run Tee, Swivel, -6 Jic/-6 Jic/-6 Jic	
43	6801-6-6 NWO	2	Adapter, Elbow, 90 Deg, -6 Jic / -6 O-Ring	
44	6801-8-12 NWO	6	Adapter, Elbow, 90 Deg, -8 Jic / -12 O-Ring	
45	6802-6-6 NWO	4	Adapter, Elbow, 45 Deg, -6 Jic/-6 O-Ring	
46	6803-6-6-6-NWO	1	Adapter, Branch Tee, -6 Jic/-6 Jic/-6 O-Ring	
47	6804-6-6-6-NWO	2	Adapter, Run Tee, -6 Jic/-6 O-Ring/-6 Jic	

## Operator's Umbrella Mount (Option) Parts List

Item No.	Part Number	Qty.	Description	Remarks
1	1011440	1	Assembly, Umbrella Mount	
2	1011438	1	Plate, Umbrella Mount	
3	100-6-16-40-5	4	CSHH, 3/8-16 X 2.5, GR5	
4	302-6	4	Washer, Lock, 3/8	
5	1011439	1	Weldment, Umbrella Mount	
6	200-6-16-5	4	Nut, Hex, 3/8-16, GR5	
7	43894229	1	Canopy, Umbrella	
8	1011519	1	Option, Umbrella, Grating	

Description	Part Number	Figure #	Item #
CSHH, 3/8-16 X 0.625, GR5, FT	100-6-16-10-5F	Figure 7-42	15
CSHH, 3/8-16 X 0.75, GR5, FT	100-6-16-12-5F	Figure 7-1	4
CSHH, 3/8-16 X 0.75, GR5, FT	100-6-16-12-5F	Figure 7-6	43
CSHH, 3/8-16 X 0.75, GR5, FT	100-6-16-12-5F	Figure 7-10	10A
CSHH, 3/8-16 X 0.75, GR5, FT	100-6-16-12-5F	Figure 7-27	33
CSHH, 3/8-16 X 0.75, GR5, FT	100-6-16-12-5F	Figure 7-30	24
CSHH, 3/8-16 X 0.75, GR5, FT	100-6-16-12-5F	Figure 7-42	16
CSHH, 3/8-16 X 1, GR5, FT	100-6-16-16-5F	Figure 7-10	31
CSHH, 3/8-16 X 1, GR5, FT	100-6-16-16-5F	Figure 7-14	50
CSHH, 3/8-16 X 1, GR5, FT	100-6-16-16-5F	Figure 7-15	19
CSHH, 3/8-16 X 1, GR5, FT	100-6-16-16-5F	Figure 7-30	22
CSHH, 3/8-16 X 1.25, GR5	100-6-16-20-5	Figure 7-5	9
CSHH, 3/8-16 X 1.25, GR5	100-6-16-20-5	Figure 7-14	49
CSHH, 3/8-16 X 1.25, GR5	100-6-16-20-5	Figure 7-26	14
CSHH, 3/8-16 X 1.25, GR5	100-6-16-20-5	Figure 7-27	11
CSHH, 3/8-16 X 1.25, GR5	100-6-16-20-5	Figure 7-42	17
CSHH, 3/8-16 X 1.5, GR5	100-6-16-24-5	Figure 7-5	8
CSHH, 3/8-16 X 1.5, GR5	100-6-16-24-5	Figure 7-6	45
CSHH, 3/8-16 X 1.5, GR5	100-6-16-24-5	Figure 7-14	41
CSHH, 3/8-16 X 1.5, GR5	100-6-16-24-5	Figure 7-26	24
CSHH, 3/8-16 X 1.5, GR5, FT	100-6-16-24-5F	Figure 7-10	2
CSHH, 3/8-16 X 1.5, GR5, FT	100-6-16-24-5F	Figure 7-18	11
CSHH, 3/8-16 X 1.75, GR5	100-6-16-28-5	Figure 7-6	44
CSHH, 3/8-16 X 2, GR5	100-6-16-32-5	Figure 7-14	44
CSHH, 3/8-16 X 2, GR5, FT	100-6-16-32-5F	Figure 7-10	20
CSHH, 3/8-16 X 2.75, GR5	100-6-16-44-5	Figure 7-15	25
CSHH, 3/8-24 X 0.75, GR5, FT	100-6-24-12-5F	Figure 7-42	18
CSHH, 5/16-18 X 1, GR5	100-5-18-16-5	Figure 7-15	16
CSHH, 5/16-18 X 1, GR5	100-5-18-16-5	Figure 7-25	19
CSHH, 5/16-18 X 1.25, GR5	100-5-18-20-5	Figure 7-38	15
CSHH, 5/8-11 X 1.75, GR5	100-10-11-28-5	Figure 7-22	34
CSHH, 7/16-14 X 1.75, GR5	100-7-14-28-5	Figure 7-42	22
CSHH, 7/16-14 X 2, GR5	100-7-14-32-5	Figure 7-30	33
CSHH, 7/16-14 X 2, GR5	100-7-14-32-5	Figure 7-42	23
CSSH, 1/2-13X3	102-8-13-48	Figure 7-6	39
Cylinder, Hydraulic 2.00" X 12.00", 2500psi	851436	Figure 7-22	12

Description	Part Number	Figure #	Item #
Right Side Arm Weldment, 150-WLE	1005778	Figure 7-21	3
Rheostat, 35 Ohm, 25 Watt	1010077	Figure 7-35	9
Rheostat, 35 Ohm, 25 Watt	1010077	Figure 7-37	9
Right Spindle Weldment	20309381	Figure 7-3	8
Rod 1-3/8 X 9-7/8	13702261	Figure 7-3	13
Rod End, Female, 5/16, Left	1007296	Figure 7-12	16
Rod End, Female, 5/16-24, Right	20936241	Figure 7-12	17
Rod, Extension Height Indicator	1009506	Figure 7-30	20
Rod, Extension Height Indicator	1009506	Figure 7-32	21
Rod, Guide	1008139	Figure 7-29	3
Rod, Guide	1008139	Figure 7-31	3
Rod, Pump Control, Tandem	1006153	Figure 7-12	15
Rod, Guide Bar	920061	Figure 7-14	22
Roller, Tube Nos Plate	21062559	Figure 7-22	13
Safety Stretch Band	20290151	Figure 7-14	30
Screed Adjusting Screw	20986170	Figure 7-28	15
Screed Plate Assembly, Main, 150-WLE	1007674	Figure 7-26	1
Screed, Electric, WLE	1012204	Figure 7-21	1
Seal Kit, Hydraulic Cylinder, 2.00 X 1.00	851436-01	Figure 7-22	Ref
Seat Mount Assembly	15528912	Figure 7-14	4
Seat Mounting Plate	21061874	Figure 7-14	52
Seat, Seat Assembly	13504717	Figure 7-14	5
Sender, Temp, 100-250°F, 06 Mp	1002184-28	Figure 7-11	5
Set Screw, Hskt, Cup, 3/8+16X0.5	113-6-16-8	Figure 7-2	13
Set Screw, Squarehead, Cup, 3/8-16 X 2	114-6-16-32	Figure 7-6	56
Shaft, Auger	1009230	Figure 7-6	23
Shaft, Conveyor	20994141	Figure 7-6	13
Shaft, Ø.688 X 43.50	854447	Figure 7-30	3
Shaft, Ø.688 X 43.50	854447	Figure 7-32	3
Shaft, Screed Crank	20221115	Figure 7-28	13
Shield, Grease Tube	20994539	Figure 7-6	4
Shield, Conveyor	1005454	Figure 7-8	8
Shim	59617985	Figure 7-19	4
Shim	20961744	Figure 7-22	2
Shim, Strike Off	1009712	Figure 7-25	15
Shoulder Bolt, Ø1/2 X 1.5L, 3/8X16	118-8-24-3/8x16	Figure 7-30	27

CLICK HERE TO **DOWNLOAD** THE COMPLETE MANUAL

- Thank you very much for reading the preview of the manual.
- You can download the complete manual from: [www.heydownloads.com](http://www.heydownloads.com) by clicking the link below



- Please note: If there is no response to CLICKING the link, please download this PDF first and then click on it.

CLICK HERE TO **DOWNLOAD** THE COMPLETE MANUAL