



Operation & Safety Manual



XR4030

Cummins Tier 4F

PN 24950-001 Rev C
February 2021

Pre-delivery Inspection Report must be completed upon placing unit in service. Please use QR link or visit www.xmfg.com/warranty/pre-delivery-inspection-report to register online.



CLICK HERE TO **DOWNLOAD** THE COMPLETE MANUAL

- Thank you very much for reading the preview of the manual.
- You can download the complete manual from: www.heydownloads.com by clicking the link below



- Please note: If there is no response to CLICKING the link, please download this PDF first and then click on it.

CLICK HERE TO **DOWNLOAD** THE COMPLETE MANUAL

Warning



Wear appropriate protective clothing. Personal protective equipment can include, but is not limited to hardhat, gloves, footwear, safety glasses or goggles, and hearing protection. Make sure clothing is snug and properly belted. DO NOT wear loose clothing, jewelry, watches, or anything that can catch on forklift controls, moving parts, etc. Failure to wear the proper protective clothing could result in death or serious injury.

Before Starting Forklift

Warning



Keep the Operation and Safety Manual on the forklift at all times. Contact Xtreme Manufacturing for replacement manuals.



Clearly define responsibilities and procedures for operating the forklift and all attachments. DO NOT proceed until seeking expert assistance from a qualified person if any doubt or question arises about the correct or safe methods for operating the forklift.



To avoid death or serious injury, carefully read and understand all instructions before operating the forklift. DO NOT operate, modify, repair, or maintain the forklift without reading and understanding the instructions and warnings in this and all other applicable manuals and technical publications. Follow all State and Federal health and safety laws and/or local regulations.



Consult Safety Data Sheets (SDS) for chemical hazards and first aid instructions. SDS should be available from the manufacturer or supplier of the fluid.

Warning



Perform a pre-operation inspection and functional tests at the beginning of each work shift. Perform the pre-operation inspection first. DO NOT perform the pre-operation inspection with the engine running or hot.

Allow the engine and associated components to cool before performing an inspection. Contact with moving or heated parts could cause death or serious injury.



Perform the pre-operation inspection and functional tests in an open area and away from any other obstacles or equipment. Inspections and functional tests may require assistance. Keep the assistant visible and a safe distance from the forklift to prevent death or serious injury.

Allow the engine and associated components to cool before performing an inspection. Contact with moving or heated parts could cause death or serious injury.



Become familiar with all safety and hazard labels, regulations, and procedures. Make sure all proper safety and hazard labels are attached to the forklift and remain legible.



A brief description of controls, indicators, and instruments is provided as a convenience for the operator. These descriptions DO NOT provide complete operation instructions.

Read and understand the entire manual to prevent death, serious injury, or equipment damage.



Keep fingers and feet away from moving parts or pinch points to prevent pinching or crushing. DO NOT allow anyone between the tires and the forklift frame while operating the forklift. Doing so can result in death or serious injury.



Always check the condition of the seat belt and mounting hardware before operating the forklift. If the seat belt or mounting hardware is defective, it may not properly restrain the operator, resulting in death or serious injury.

- DO NOT operate the forklift until the seat belt or mounting hardware is replaced, if worn or damaged.
- The seat belt MUST be worn while operating the forklift. Failure to wear the seat belt could result in death or serious injury.

Table 1. Labels

Item	Qty	Part No.	Description	Item	Qty	Part No.	Description
1	1	18008-000	Data Plate	39	1	18353-000	Boom Swoosh Right Front
2	1	18004-070	Dash Overlay	40	1	18346-000	Boom Swoosh Right Rear
3	2	18010-001	Caution, Slip/Trip Hazard	41	4	18383-000	XR4030
4	1	18011-001	Caution, Engine Damage Hazard	42	1	18409-000	Diesel Exhaust Fluid
5	1	18013-002	Diesel Only	43	1	18311-009	Boom Lift Point
6	1	18014-002	Check Engine Oil	44	1	18331-000	Carriage Damage
7	1	18015-001	Check/Fill Coolant	45	1	18343-000	Boom Lettering A-B
8	1	18016-001	Caution, Burn Hazard	46	1	18344-000	Boom Lettering C-D
9	2	18017-001	Danger, Crushing Hazard	47	1	18081-000	Xtreme Quality Control Approval
10	7	18018-001	Danger, Electrocutation Hazard	48	1	18332-000	Tow Capacity
11	1	18018-002	Danger, Electrocutation Hazard	49	1	18411-000	Check Air Filter Minder Daily
12	3	18019-001	Danger, Crushing Hazard	50	1	18412-000	Equipment Damage Shutdown
13	1	18020-001	Warning, Tip Over Hazard	51	1	18307-001	Warning, Falling Hazard
14	1	18021-001	Danger, Crushing Hazard	52	1	18067-100	Frame Sway Control
15	1	18022-001	Warning, Tip Over Hazard	53	1	18033-100	Auxiliary Control
16	1	18023-001	Warning, Welding Modification Hazard	54	1	18334-001	Control Handle
17	1	18025-001	Warning, Falling Hazard	55	1	17321-000	Standard Carriage Load Chart
18	1	18026-001	Warning, Unrestrained	56	1	18413-000	Fill DEF Tank
19	1	18027-001	Danger, Rotating Equipment				
20	1	18031-001	Warning, Safe Operation Checklist				
21	1	18032-001	Warning, Improper Use Hazard				
22	1	18347-000	Boom Handle Control				
23	1	18039-000	Angle Indicator				
24	6	18041-001	Warning, Pinch Point Indicator				
25	2	18042-000	Xtreme Logo				
26	2	18066-001	Caution, Crushing Hazard				
27	1	18069-000	Hydraulic Tank Fluid Level				
28	1	18082-001	Warning, Injection Hazard				
29	2	18083-001	Warning, Explosion Hazard				
30	1	18086-001	Hydraulic Fluid, Use Dexron III				
31	4	18090-001	Warning, Tip Over Hazard				
32	2	18300-001	Warning, Falling Hazard				
33	2	18312-000	Warning, Falling Hazard				
34	4	18315-000	Tie Down Point				
35	2	18043-000	Xtreme Logo				
36	3	18044-000	Xtreme X				
37	1	18351-000	Boom Swoosh Left Front				
38	1	18345-000	Boom Swoosh Left Rear				

Features

Standard Equipment	
Feature	Description
Boom	Two (2) section boom
	Boom equipped with heavy duty rollers for longer life and less maintenance
Chassis	Rear axle stabilization
	2" main frame plate
	Sliding engine/transmission cowling
	Low mounted central engine drive train
Cab	Lights (front)
	12 Volt electrical system
	Display with fuel level, engine coolant temperature, oil pressure, tachometer, DEF level and battery voltage gauges; and brake oil pressure, parking brake, axle lock, rear wheel alignment, and tilt interlock warning indicators & brake oil pressure, parking brake, axle lock, rear wheel alignment, and tilt interlock warning lights
	Easy access drop down electrical panel
	12 Volt accessory power outlet
	Electric horn and backup alarm
	Rear view mirrors
	Adjustable deluxe suspension seat with seat belt
	Rear camera for rearward visibility
	Boom angle and frame level indicator
Tires	Foam-filled
Hydraulics	Dual auxiliary hydraulic circuits with quick attach
	Multifunction boom control handle

Optional Equipment	
Feature	Description
Options	Enclosed cab with A/C
	Heater/defroster/windshield wiper
	Work light package
	Backup camera

The ESC Regen Disabled indicator will be displayed if the ESC Regen has been manually disabled by the user.

X. MESSAGE / STATUS DISPLAY

Displays engine status messages or additional warnings.

π. BACKUP CAMERA (OPTIONAL)

This indicator comes on and the display automatically changes to backup camera when the transmission is in REVERSE.

Tilt Interlock System

⚠ Caution

Damage to this forklift may occur due to contact of the attachment adapter, attachment, and/or forks with the front tires or chassis while operating with the Override active. Operate with the Override active only when necessary and use extreme caution while doing so.

This reachfork is equipped with an attachment tilt interlock system to prevent the attachment adapter, attachment, and/or forks from interfering with the front tires or chassis. If the boom is less than 10° above horizontal and extended less than 30 inches, the tilt down angle is limited to 18° relative to the boom.



Fig 35. Tilt Interlock

If the attachment adapter is tilted down 18° relative to the boom, the boom is less than 10° above horizontal and extended less than 30 inches, the tilt down, boom down and boom retract functions will be disabled, an audible alarm will sound and the interlock light (K) on the control console will flash. Pressing the Sway Override Switch/Trigger (Fig. 51) will silence the audible alarm, and allow all boom functions to work while the interlock light on the display changes to continuously on. Tilt back, boom up, and boom extend functions are always enabled. Tilting the attachment adapter back, raising the boom, or extending the boom will also allow all boom functions to work.

Display Features

The display allows the operator to view vital engine information and other critical functions, including gauge display, engine diagnostics to monitor engine condition and performance, fault codes, and warning lights.

POWER UP

When the ignition is turned on, the display powers up and defaults to GAUGE DISPLAY mode. The display should remain in this mode for normal operation.



Fig 36. Power Up

MAIN MENU

Pressing the MENU button will bring up the MAIN MENU. Pressing the MENU button again, or the GAUGE DISPLAY soft button, will return to the GAUGE DISPLAY mode.



Fig 37. Main Menu

Operator Maintenance



Fig 56. Check Hydraulic Oil.



Check Hydraulic Oil Sight Gauge (A); Add Hydraulic Oil, if Necessary (B). **WARNING! DO NOT Remove Hydraulic Tank Filler Cap Unless It Is Cool Enough To Touch With Bare Hands.**



Fig 57. Add DEF If Necessary

Add DEF (Diesel Exhaust Fluid) when the Low DEF Level indicator is displayed. Fill DEF tank at each fuel fill.

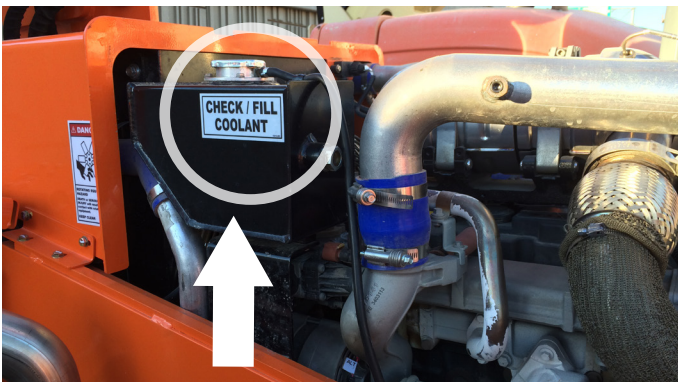


Fig 58. Check Coolant Reservoir Level. Add Coolant, If Necessary



WARNING! Hot Coolant. DO NOT Open Radiator Cap When Hot To Touch.

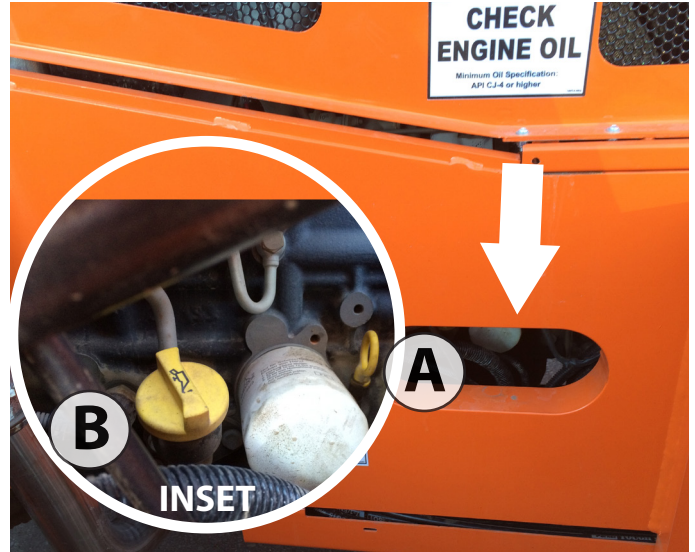


Fig 59. Check Engine Oil Level.

Check Engine Oil Level Using Yellow Dipstick "A". Add Engine Oil (API CJ-4), If Necessary ("B", See Inset).



Fig 60. Check Battery Case and Terminals



Fig 61. Store Operation and Safety Manual in Protective Case

Fork Positioning Carriage Operation

⚠ Caution

Do not adjust forks when the Fork Positioning Carriage is loaded. Adjusting forks when carriage is loaded may result in loss of load or carriage damage. Adjust the forks **BEFORE** loading the carriage.

To move the forks outward, press the top button (A) on the front control handle, or move the auxiliary handle (B) to the left. To move the forks inward, press the lower button (C) on the front control handle, or move the auxiliary handle (B) to the right.

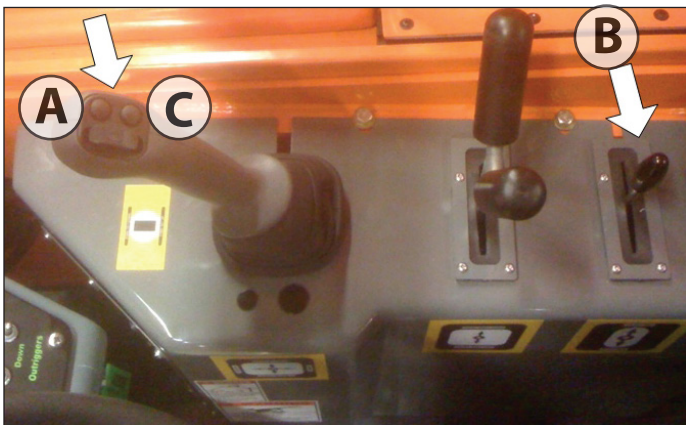
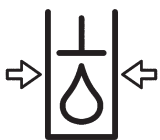


Fig 73. Fork Positioning Control Handle

⚠ Warning



Hydraulic attachments have a maximum hydraulic pressure rating. Failure to make sure the attachment is equipped with a pressure reducing valve, or is rated to be equal or slightly greater than 4,300 psi (296.5 bar), which is the maximum pressure of the forklift auxiliary hydraulic system at the quick-disconnect couplers, could result in death or serious injury.

Make sure all hydraulic connections are tight (if equipped).

When the auxiliary attachment control lever (B) is moved right or left, it activates hydraulic pressure through the quick attach couplers to move the attachment.

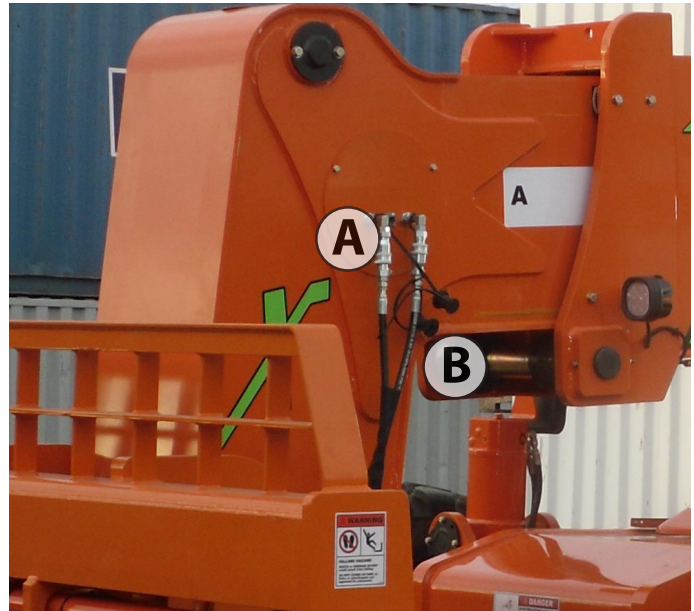


Fig 74. Quick Attach System for Hydraulic Systems
(A) Female Couplers
(B) Male Couplers

Quick Attach System

This forklift includes a quick attach system that allows for easy attachment changes. Perform attachment connection and removal procedures on level ground.

Attachment Connection

⚠ Warning



Improper connection of an auxiliary attachment can result in death or serious injury. Attachments not locked into place could become unstable and fall on the operator or other personnel near the forklift, which could result in death or serious injury.

- Make sure attachment locking devices are always in place.
 - **DO NOT** operate the forklift until you have positive indication that the carriage attachment is fully engaged.
1. Position the forklift directly behind the attachment.
NOTE: Allow enough distance to extend the boom approximately 36 inches (0.91 meters).
 2. Tilt the attachment adapter forward.

After Every 500 Hours of Operation

- Comply with 50-Hour Maintenance Requirements
- Comply with 250-Hour Maintenance Requirements
- Replace air filter
- Replace fuel filters
- Check engine hoses and connections for leaks, damage, and tightness
- Check radiator hoses for leaks, damage, and tightness
- Check electrical cables, leads, and connections for damage and tightness
- Check specific gravity of engine coolant
- Replace transmission fluid and filters
- Replace hydraulic reservoir air breather
- Replace hydraulic return line filters
- Replace hydraulic high-pressure filters

After Every 1,000 Hours of Operation

- Comply with 50-Hour Maintenance Requirements
- Comply with 250-Hour Maintenance Requirements
- Comply with 500-Hour Maintenance Requirements
- Change wheel-end oil
- Change differential oil
- Inspect boom chains

After Every 2,000 Hours of Operation

- Comply with 50-Hour Maintenance Requirements
- Comply with 250-Hour Maintenance Requirements
- Comply with 500-Hour Maintenance Requirements
- Comply with 1000-Hour Maintenance Requirements
- Change hydraulic fluid
- Clean or replace hydraulic reservoir strainer

After Every 4,000 Hours of Operation

- Drain and flush cooling system

CLICK HERE TO **DOWNLOAD** THE COMPLETE MANUAL

- Thank you very much for reading the preview of the manual.
- You can download the complete manual from: www.heydownloads.com by clicking the link below



- Please note: If there is no response to CLICKING the link, please download this PDF first and then click on it.

CLICK HERE TO **DOWNLOAD** THE COMPLETE MANUAL