



# XR2045

Operation & Safety Manual

# XR 2045

18369-000

CLICK HERE TO **DOWNLOAD** THE COMPLETE MANUAL

- Thank you very much for reading the preview of the manual.
- You can download the complete manual from: [www.heydownloads.com](http://www.heydownloads.com) by clicking the link below



- Please note: If there is no response to CLICKING the link, please download this PDF first and then click on it.

CLICK HERE TO **DOWNLOAD** THE COMPLETE MANUAL

**Warning**



Wear appropriate protective clothing. Personal protective equipment can include, but is not limited to hardhat, gloves, footwear, safety glasses or goggles, and hearing protection. Make sure clothing is snug and properly belted. **DO NOT** wear loose clothing, jewelry, watches, or anything that can catch on forklift controls, moving parts, etc. Failure to wear the proper protective clothing could result in death or serious injury.

**Before Starting Forklift**

**Warning**



Keep the Operation and Safety Manual on the forklift at all times. Contact Xtreme Manufacturing for replacement manuals.



Clearly define responsibilities and procedures for operating the forklift and all attachments. **DO NOT** proceed until you seek expert assistance from a qualified person if any doubt or question arises about the correct or safe methods for operating the forklift.



To avoid death or serious injury, carefully read and understand all instructions before operating the forklift. **DO NOT** operate, modify, repair, or maintain the forklift unless you read and understand the instructions and warnings in this and all other applicable manuals and technical publications. Follow all State and Federal health and safety laws and/or local regulations.



Consult Material Safety Data Sheets (MSDS) for chemical hazards and first aid instructions. MSDS should be available from the manufacturer or supplier of the fluid.

**Warning**



Perform a pre-operation inspection and functional tests at the beginning of each work shift. Perform the pre-operation inspection first. **DO NOT** perform the pre-operation inspection with the engine running or hot. Contact with moving or heated parts could cause death or serious injury.



Perform the pre-operation inspection and functional tests in an open area. Inspections and functional tests may require assistance. Keep the assistant visible and a safe distance from the forklift to prevent death or serious injury.



Become familiar with all safety and hazard labels, regulations, and procedures. Make sure all proper safety and hazard labels are attached to the forklift and remain legible.



A brief description of controls, indicators, and instruments is provided as a convenience for the operator. These descriptions **DO NOT** provide complete operation instructions. Read and understand the entire manual to prevent death, serious injury, or equipment damage.



Keep fingers and feet away from moving parts or pinch points to prevent pinching or crushing. **DO NOT** allow anyone between the tires and the forklift frame while operating the forklift. Doing so can result in death or serious injury.



Always check the condition of the seat belt and mounting hardware before operating the forklift. If the seat belt or mounting hardware is defective, it may not properly restrain the operator, resulting in death or serious injury.

- **DO NOT** operate the forklift until the seat belt or mounting hardware is replaced, if worn or damaged.
- The seat belt **MUST** be worn while operating the forklift. Failure to wear the seat belt could result in death or serious injury.

Front View

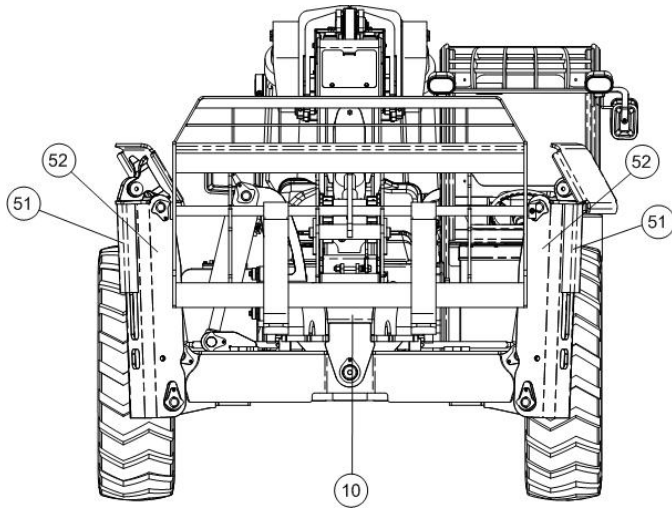


Figure 3-3. Label Legend Front View.

Rear View

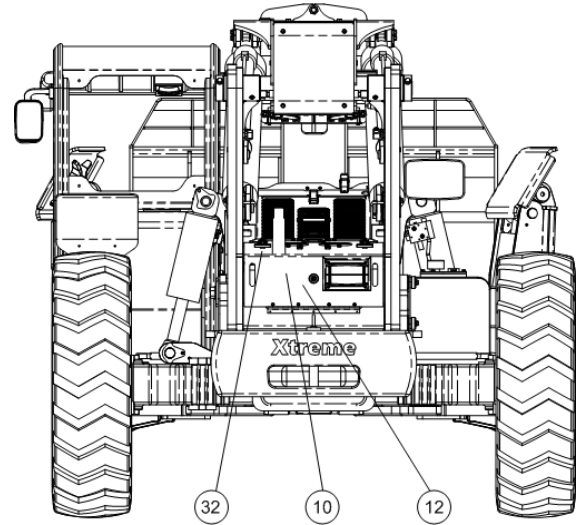


Figure 3-4. Label Legend Rear View.

Cab View

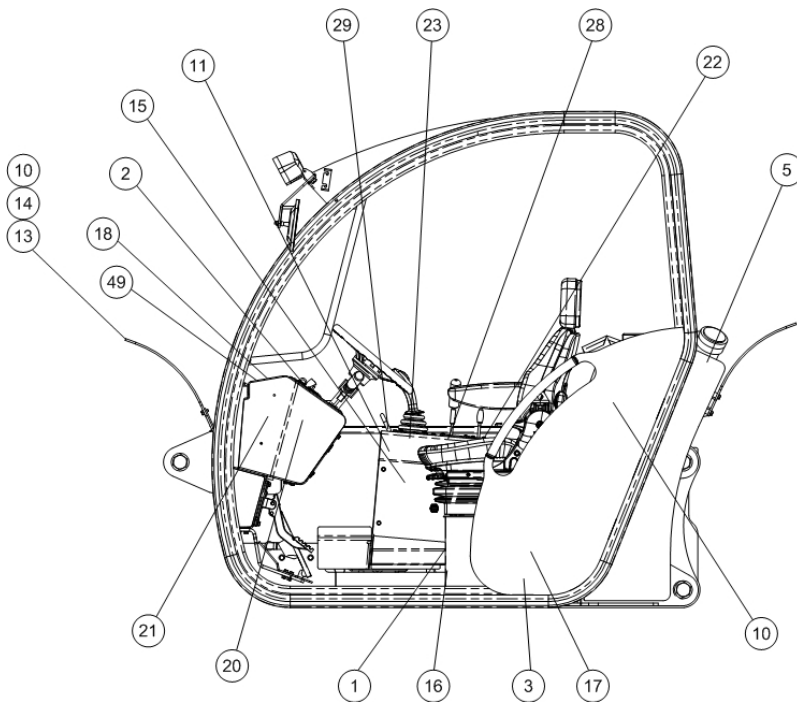
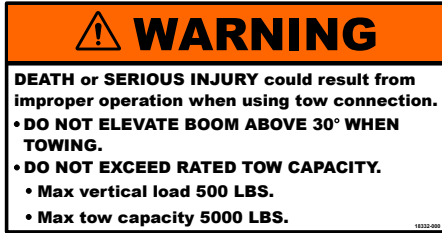


Figure 3-5. Label Legend Cab View.



49) 18332-000



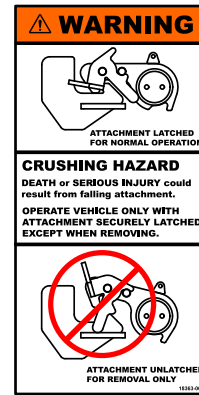
50) 18307-001



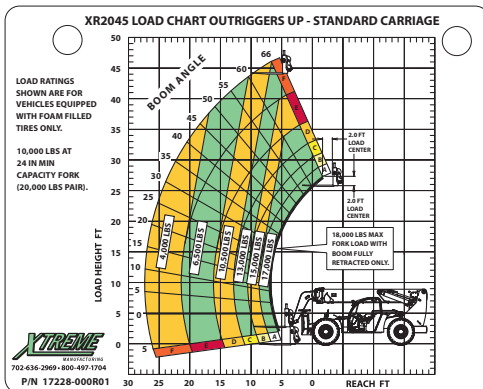
51) 18306-001



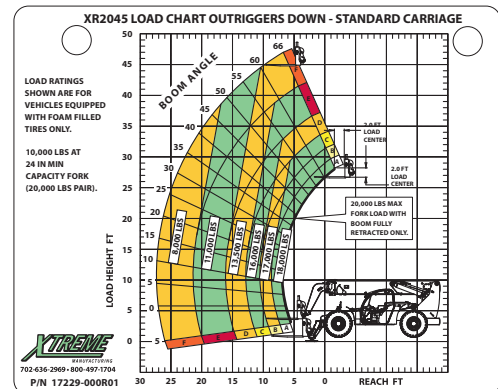
52) 18306-000



53) 18363-000



54) 17228-000R01



55) 17229-000R01

**Rear Axle Centering Indicator**

The rear axle centering indicator illuminates when the rear wheels are aligned perpendicular to the rear axle. The rear wheels must be aligned perpendicular to axle in order to change the steering select switch.

If the rear axle centering indicator does not illuminate, stop the forklift, follow proper shut down procedures, tag the forklift with "Do Not Operate" tags, and have a qualified mechanic service or repair the forklift **BEFORE** placing it into service again.



Figure 6-30. Rear Axle Centering Indicator.

**Steering Select Switch**

**Warning**

**DO NOT change steering modes until the forklift slows or comes to a complete stop. Align all four (4) wheels perpendicular to the axle, before changing steering mode. Changing steering modes at higher travel speeds can make the forklift unstable, and cause a loss of control, which could result in death, serious injury, or property damage.**

The steering select switch has three (3) steering positions: Crab, Two Wheel Steering (2W), and Four Wheel Steering (4W).



Figure 6-31. Steering Select Switch.

**Declutch Indicator**

The declutch indicator illuminates when the declutch switch is set to the ON position.

If the declutch indicator does not illuminate, stop the forklift, follow proper shut down procedures, tag the forklift with "Do Not Operate" tags, and have a qualified mechanic service or repair the forklift **BEFORE** placing it into service again.



Figure 6-32. Declutch Indicator.

**Declutch Switch**

The declutch switch (in conjunction with the service brake) disengages the transmission to prevent the forklift from moving while raising or lowering a load.

- When the declutch switch is set to ON and the service brake applied, the transmission is disengaged.
- When the declutch switch is set to OFF, the transmission remains engaged when the travel select lever is set to either FORWARD or REVERSE.



Figure 6-33. Declutch Switch.

Operator Maintenance



Figure 7-1. Check Hydraulic Oil Sight Gauge.

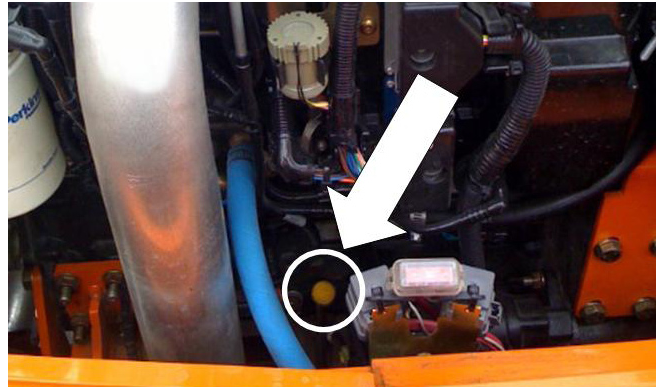


Figure 7-4. Check Engine Oil Level. Add Engine Oil, If Necessary.



Figure 7-2. Add Hydraulic Oil, If Necessary.



Figure 7-5. Check Battery Case and Terminals.



Figure 7-3. Check Coolant Reservoir Level. Add Coolant, If Necessary.



Figure 7-6. Store Operation and Safety Manual In Protective Case.

3. Tilt adapter forward and back vehicle away or retract boom to disengage adapter from carriage.



Figure 7-25. Disengage Adapter From Carriage.

**Load Handling**

**⚠ Danger**



Death or serious injury by electrocution will result from contact with or inadequate clearance with energized power lines or apparatus.

- Never operate the forklift in an area where active overhead power lines, overhead or underground cables, or other power sources exist.
- Contact the appropriate power or utility company to de-energize power lines or take other suitable precautions.



Keep the forklift, attachments, and loads a safe distance from electrical power lines.

- Remain at least 10 feet (3 meters), plus an additional 0.4 inches (10 millimeters) for each 1,000 volts over 50,000 volts, from active power lines and other power sources.
- Work site operating directives and/or local or state codes might require a greater distance.
- Know the maximum height and reach of this reach forklift.

**⚠ Warning**



Failure to follow proper safety procedures when lifting, lowering, and traveling with a load could cause death, serious injury, or property damage.

**DO NOT** exceed forklift capacity of 20,000 pounds (9,072 kilograms). The total rated capacity of the forks being used must equal or exceed forklift capacity. Forks can break causing loss of load and could result in death or serious injury.



**DO NOT** exceed the rated load for any attachment. Any attempt to lift or carry loads in excess of the manufacturer's rated load could cause forklift tip over, loss of load, or structural damage which could result in death, serious injury, or property damage.

**⚠ Warning**



Failure to keep personnel clear of the load area while the load is being raised or lowered could cause death or serious injury. **DO NOT** lift, swing, or move a load over anyone or over a forklift cab.

- Review the rated load capacity of each auxiliary attachment before performing any operation.
- Use the correct load chart and **NEVER** exceed specified weights and load centers.
- **DO NOT** exceed the manufacturer's recommended load capacity.
- **DO NOT** operate the forklift with an unsafe load distribution.
- Adjust the load as necessary, especially for nonstandard loads.
- Use caution when handling loose material that can fall into the cab.
- Remove overhanging load materials, when possible, and watch for sliding material.
- **DO NOT** reach a load over posts or other objects that can enter the cab, if tipped.
- Avoid sudden stops, starts, or turns.

CLICK HERE TO **DOWNLOAD** THE COMPLETE MANUAL

- Thank you very much for reading the preview of the manual.
- You can download the complete manual from: [www.heydownloads.com](http://www.heydownloads.com) by clicking the link below



- Please note: If there is no response to CLICKING the link, please download this PDF first and then click on it.

CLICK HERE TO **DOWNLOAD** THE COMPLETE MANUAL