



# XR1045

Operation & Safety Manual



(702) 636-2969  
(800) 497-1704

1415 W. Bonanza Rd. Las Vegas, NV 89106  
[www.XtremeManufacturing.com](http://www.XtremeManufacturing.com)

CLICK HERE TO **DOWNLOAD** THE COMPLETE MANUAL

- Thank you very much for reading the preview of the manual.
- You can download the complete manual from: [www.heydownloads.com](http://www.heydownloads.com) by clicking the link below



- Please note: If there is no response to CLICKING the link, please download this PDF first and then click on it.

CLICK HERE TO **DOWNLOAD** THE COMPLETE MANUAL

**Warning**



Wear appropriate protective clothing. Personal protective equipment can include, but is not limited to hardhat, gloves, footwear, safety glasses or goggles, and hearing protection. Make sure clothing is snug and properly belted. **DO NOT** wear loose clothing, jewelry, watches, or anything that can catch on forklift controls, moving parts, etc. Failure to wear the proper protective clothing could result in death or serious injury.

**Before Starting Forklift**

**Warning**



Keep the Operation and Safety Manual on the forklift at all times. Contact Xtreme Manufacturing for replacement manuals.



Clearly define responsibilities and procedures for operating the forklift and all attachments. **DO NOT** proceed until you seek expert assistance from a qualified person if any doubt or question arises about the correct or safe methods for operating the forklift.



To avoid death or serious injury, carefully read and understand all instructions before operating the forklift. **DO NOT** operate, modify, repair, or maintain the forklift unless you read and understand the instructions and warnings in this and all other applicable manuals and technical publications. Follow all State and Federal health and safety laws and/or local regulations.



Consult Material Safety Data Sheets (MSDS) for chemical hazards and first aid instructions. MSDS should be available from the manufacturer or supplier of the fluid.

**Warning**



Perform a pre-operation inspection and functional tests at the beginning of each work shift. Perform the pre-operation inspection first. **DO NOT** perform the pre-operation inspection with the engine running or hot. Contact with moving or heated parts could cause death or serious injury.



Perform the pre-operation inspection and functional tests in an open area. Inspections and functional tests may require assistance. Keep the assistant visible and a safe distance from the forklift to prevent death or serious injury.



Become familiar with all safety and hazard labels, regulations, and procedures. Make sure all proper safety and hazard labels are attached to the forklift and remain legible.



A brief description of controls, indicators, and instruments is provided as a convenience for the operator. These descriptions **DO NOT** provide complete operation instructions. Read and understand the entire manual to prevent death, serious injury, or equipment damage.



Keep fingers and feet away from moving parts or pinch points to prevent pinching or crushing. **DO NOT** allow anyone between the tires and the forklift frame while operating the forklift. Doing so can result in death or serious injury.



Always check the condition of the seat belt and mounting hardware before operating the forklift. If the seat belt or mounting hardware is defective, it may not properly restrain the operator, resulting in death or serious injury.

- **DO NOT** operate the forklift until the seat belt or mounting hardware is replaced, if worn or damaged.
- The seat belt **MUST** be worn while operating the forklift. Failure to wear the seat belt could result in death or serious injury.

Front View

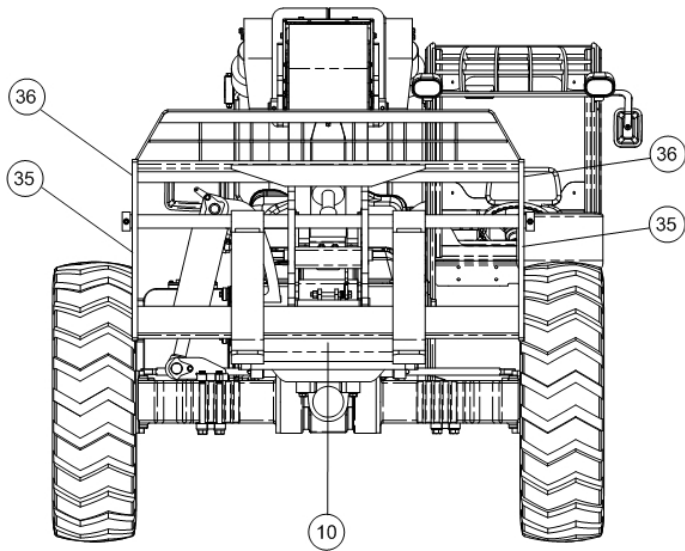


Figure 3-3. Label Legend Front View.

Rear View

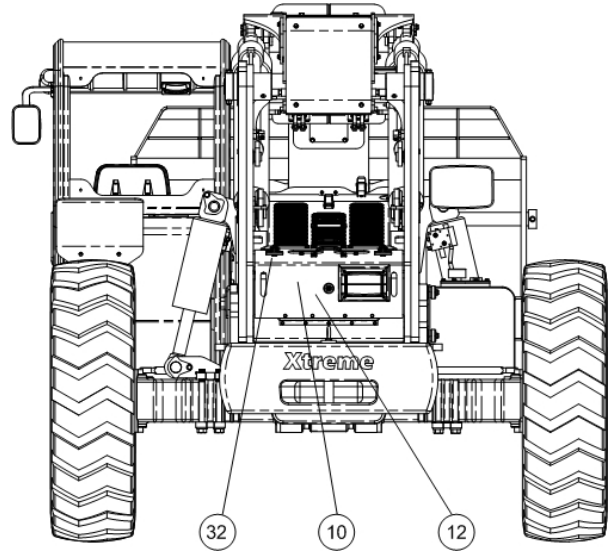


Figure 3-4. Label Legend Rear View.

Cab View

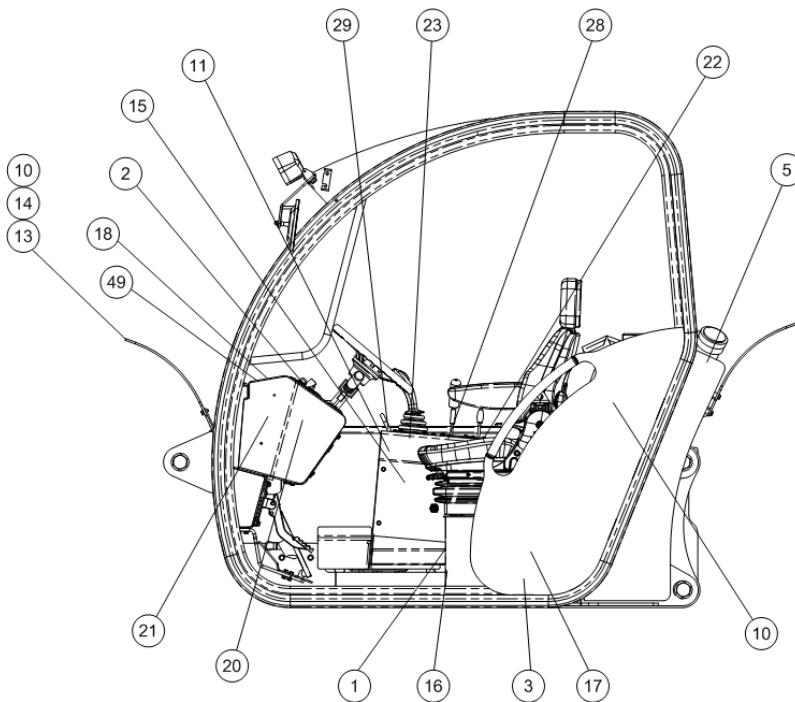


Figure 3-5. Label Legend Cab View.

**CAUTION**

**CARRIAGE DAMAGE**  
**DAMAGE may result from adjusting forks when carriage is loaded.**  
**ONLY ADJUST FORKS WHEN CARRIAGE IS UNLOADED.**

18331-000

49) 18331-000

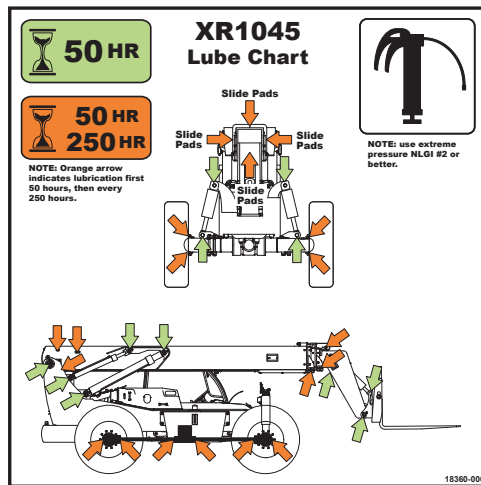
**WARNING**

**DEATH or SERIOUS INJURY could result from improper operation when using tow connection.**

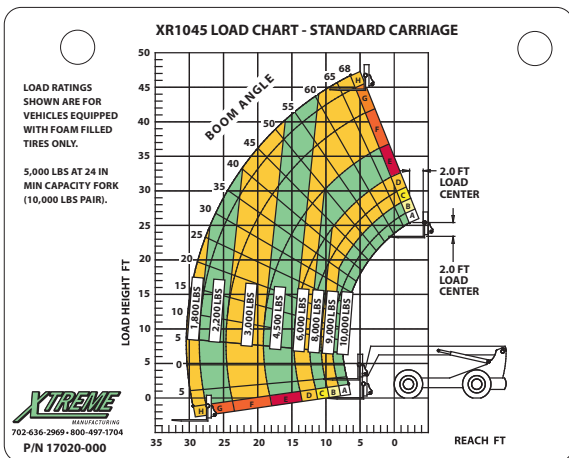
- **DO NOT ELEVATE BOOM ABOVE 30° WHEN TOWING.**
- **DO NOT EXCEED RATED TOW CAPACITY.**
  - Max vertical load 500 LBS.
  - Max tow capacity 5000 LBS.

18332-000

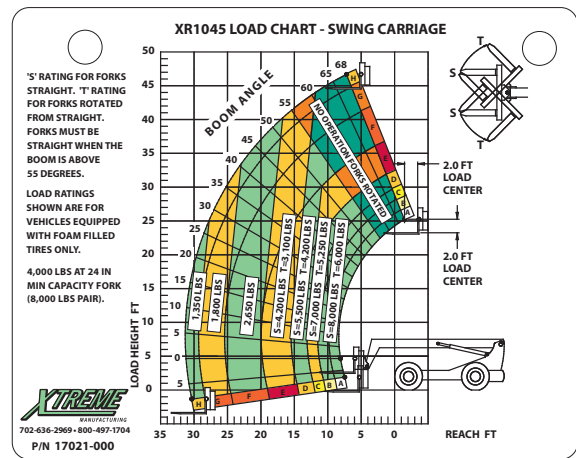
50) 18332-000



51) 18360-000



52) 17020-000



53) 17021-000

**Low Brake Pressure Indicator**

The low brake pressure indicator illuminates if the hydraulic brake oil pressure gets low.

If the low brake pressure indicator is illuminated, do not release parking brake or engage transmission until light is out. If light does not go out, stop the forklift, follow proper shut down procedures, tag the forklift with "Do Not Operate" tags, and have a qualified mechanic service or repair the forklift **BEFORE** placing it into service again.

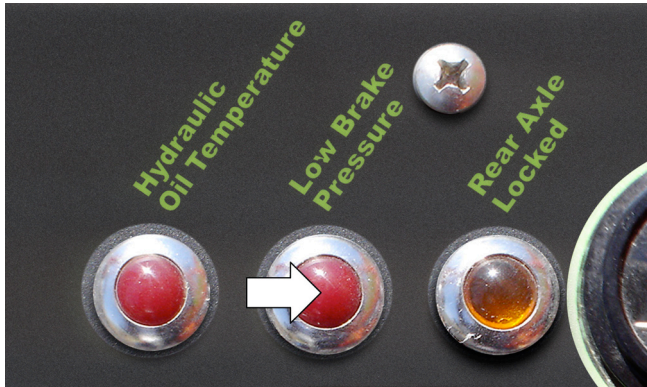


Figure 6-21. Low Brake Pressure Indicator.

**Rear Axle Lock Indicator**

The rear axle lock indicator illuminates when the forklift is in the axle lock mode. The rear axle locks when the parking brake is set to ON (engaged), or the transmission is in NEUTRAL or the service brake is applied, and when the boom is above 40°.

If the rear axle lock indicator does not illuminate, stop the forklift, follow proper shut down procedures, tag the forklift with "Do Not Operate" tags, and have a qualified mechanic service or repair the forklift **BEFORE** placing it into service again.

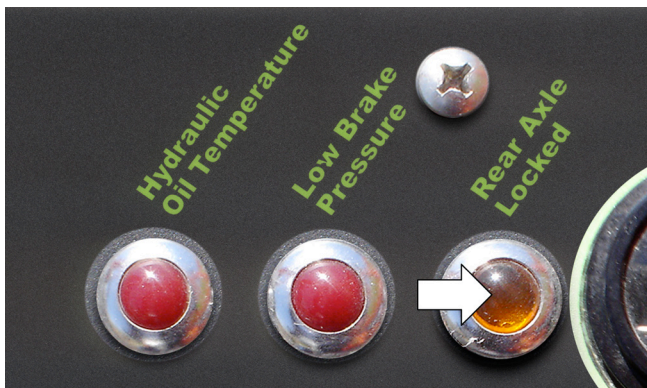


Figure 6-22. Rear Axle Lock Indicator.

**Hourmeter**

The hourmeter indicates and records engine operating hours and has a total readout of 9,999.9 hours. Use the hourmeter to establish a forklift maintenance schedule.

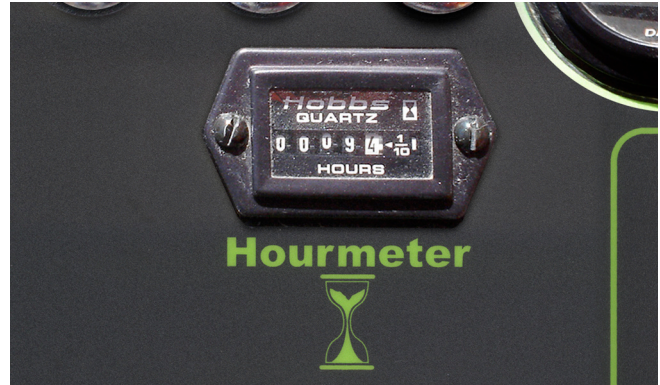


Figure 6-23. Hourmeter.

**Voltage Gauge**

The voltage gauge indicates the amount of charge (in Volts). Normal system voltage is between 11 and 15 Volts.

If the voltage gauge shows abnormal readings, stop the forklift, follow proper shut down procedures, tag the forklift with "Do Not Operate" tags, and have a qualified mechanic service or repair the forklift **BEFORE** placing it into service again.

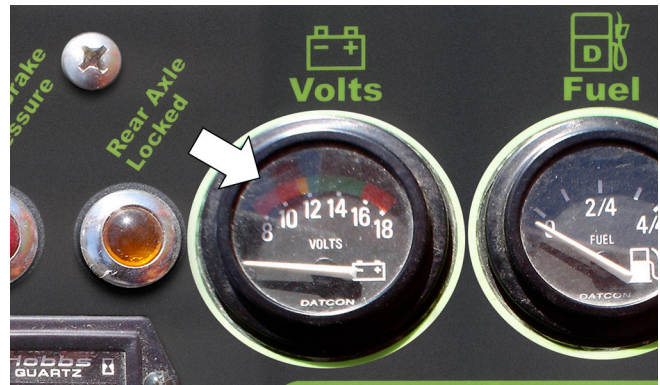


Figure 6-24. Voltage Gauge.

**Functional Tests**

**⚠ Warning**



**Perform a pre-operation inspection and functional tests at the beginning of each work shift. Perform the pre-operation inspection of the forklift first. DO NOT**

**perform the pre-operation inspection with the engine running or hot. Contact with moving or heated parts could cause death or serious injury.**



**Perform the pre-operation inspection and functional tests in an open area. Inspections and functional tests may require assistance. Keep the assistant**

**visible and a safe distance from the forklift to prevent death or serious injury.**



**Remove forklift from service and place “Do Not Operate” tags on the starter switch and steering wheel if anything is found to be in need of repair or maintenance, defective,**

**or unsafe in any way.**

**The safety, efficiency, and service life of your reach forklift will be increased by performing functional tests at the beginning of each shift. If any of the items in the functional tests are not operating properly or within set tolerances, stop the forklift, follow proper shut down procedures, tag the forklift with “Do Not Operate” tags, and have a qualified mechanic service or repair the forklift before placing it into service again.**

**Functional Test Checklist**

- Operate the boom control handle forward and backward to raise and lower boom.
- Operate the boom control handle left and right to extend and retract boom.
- Operate the attachment tilt thumb switch up and down to tilt the attachment.
- Operate the sway control handle left and right to sway frame left and right.
- Operate the auxiliary attachment control lever (if a hydraulic attachment is being used).
- Turn work lights on and off.
- Press the horn button to sound horn.
- Place the travel select lever in reverse to sound the backup alarm.
- Release parking brake.
- Operate the forklift in forward and reverse.
- Test the gear select lever while operating the forklift in forward and reverse.
- Test the service and parking brakes.
  - Apply the service brake pedal after the forklift begins to move and the forklift should stop immediately.
  - Apply the parking brake. The forklift should not move unless the parking brake is released.
- Test each steering function. Operate the forklift in forward and reverse at low idle speed and turn the steering wheel approximately 1/4 turn in each direction for each of the following modes:
  - Align the wheels and set the Steering Select switch to crab steering.
  - Align the wheels and set the Steering Select switch to 2 wheel (2W) steering.
  - Align the wheels and set the Steering Select switch to 4 wheel (4W) steering.
- Check gauges after the engine warms to the proper operating range.
  - Check the voltage gauge. The voltage gauge should read between 11 to 15 Volts.
  - Check the engine coolant temperature gauge. The engine coolant temperature gauge should read between 180 to 200°F.
  - Check the engine oil pressure gauge. The engine oil pressure gauge should read between 40 to 80 PSI.

**Warning**



Hydraulic attachments have a maximum hydraulic pressure rating. Failure to make sure the attachment is equipped with a pressure reducing valve, or is rated to be equal or greater than 3,500 psi (241 bar), which is the maximum pressure of the forklift auxiliary hydraulic system at the quick-disconnect couplers, could result in death or serious injury.

When the auxiliary attachment control lever is moved right or left it activates hydraulic pressure through the quick attach couplers to move the carriage.

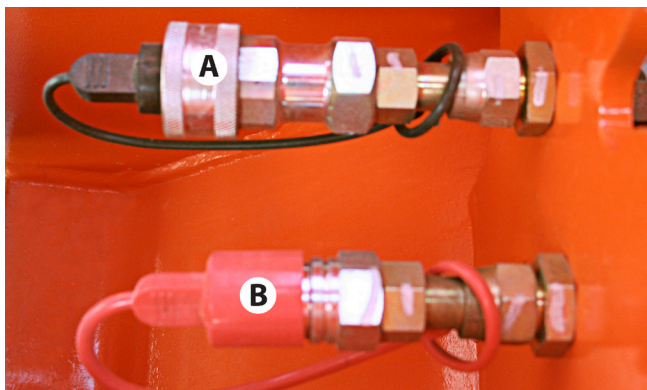


Figure 7-20. Quick Attach Couplers For Hydraulic Systems. (A) Female Coupler. (B) Male Coupler.

**Quick Attach System**

This forklift includes a quick attach system that allows for easy attachment changes. Perform attachment connection and removal procedures on level ground.

**Attachment Connection**

**Warning**



Improper connection of an auxiliary attachment can result in death or serious injury. Attachments not locked into place could become unstable and fall on the operator or other personnel near the forklift, which could result in death or serious injury.

- Make sure attachment locking devices are always in place.
- **DO NOT** operate the forklift until you have positive indication that the quick attach pin and lock lever are fully engaged.

1. Position the forklift directly behind the attachment.

**NOTE:** Allow enough distance to extend the boom approximately 18 to 20 inches (0.46 to 0.5 meters).

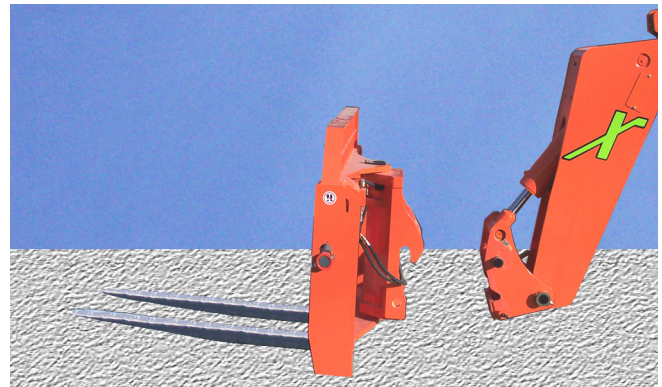


Figure 7-21. Position Quick Attach Adapter In Line With Attachment.

# Standard Carriage Load Capacity Chart

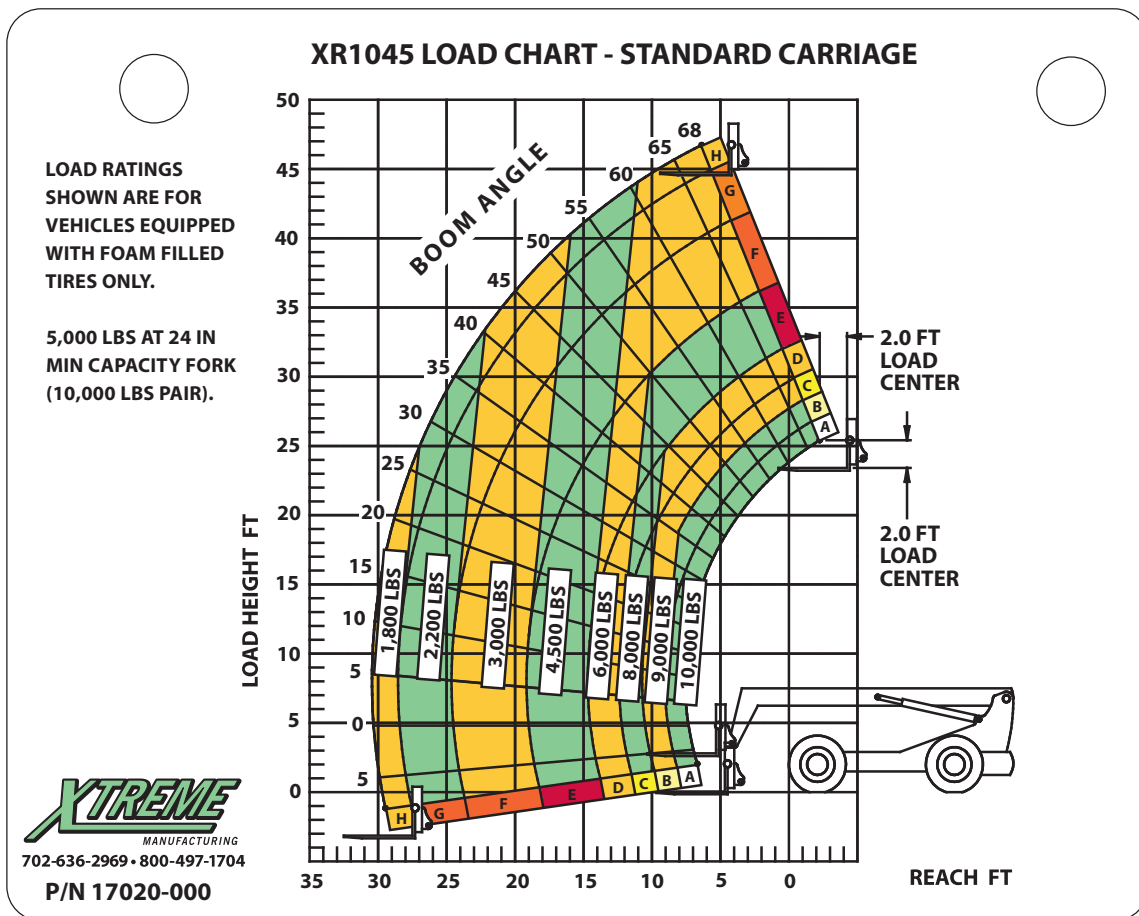


Figure 7-40.

CLICK HERE TO **DOWNLOAD** THE COMPLETE MANUAL

- Thank you very much for reading the preview of the manual.
- You can download the complete manual from: [www.heydownloads.com](http://www.heydownloads.com) by clicking the link below



- Please note: If there is no response to CLICKING the link, please download this PDF first and then click on it.

CLICK HERE TO **DOWNLOAD** THE COMPLETE MANUAL