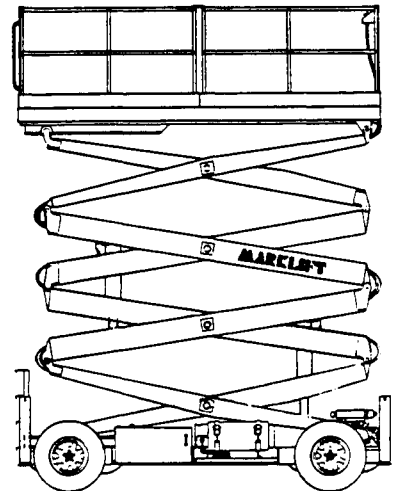


MARKLIFT[®]

SELF-PROPELLED SCISSOR (ROUGH TERRAIN MODELS)

OPERATION MAINTENANCE AND PARTS MANUAL



THIS TECHNICAL MANUAL APPLIES TO THE FOLLOWING ELECTRIC AND GAS MODELS:

RT26E RT31E RT40E RT25G RT26G RT31G SRT31G RT40G

MARK INDUSTRIES

P.O. Box 720 (90801)
2662 East Del Amo Blvd.
Carson, California 90746
(213) 639-9700 (800) 421-1826 TELEX: 677-361

REVISION 1
JANUARY 1983

INITIAL ISSUE
SEPTEMBER 1981

17012

CLICK HERE TO **DOWNLOAD** THE COMPLETE MANUAL

- Thank you very much for reading the preview of the manual.
- You can download the complete manual from: www.heydownloads.com by clicking the link below



- Please note: If there is no response to CLICKING the link, please download this PDF first and then click on it.

CLICK HERE TO **DOWNLOAD** THE COMPLETE MANUAL

MARKLIFT SELF-PROPELLED SCISSOR
(ROUGH TERRAIN MODELS)
RT31G

<u>DESCRIPTION</u>	<u>ENGLISH</u>	<u>METRIC</u>
HEIGHT-WORKING (EXTENDED)	37'	11.28 m
HEIGHT-PLATFORM (EXTENDED)	31'	9.45 m
(LOWERED)	52"	1.32 m
LENGTH (OVERALL)	155"	3.94 m
WIDTH (OVERALL)	87.5"	2.22 m
PLATFORM-SIZE (INSIDE)	73 X 145"	1.85 m X 3.68 m
PLATFORM-SAFETY RAILS (REMOVABLE)	42"	1.06 m
PLATFORM-TOE PLATE	6"	.15 m
LIFT CAPACITY	2000#	907.20 kg.
WHEEL BASE	108.5"	2.76 m
WHEEL TRACK	77.5"	1.97 m
TURNING RADIUS (INSIDE)	14'10"	4.52 m
DRIVE SPEED--CREEP	.5 MPH	.8 km/hr.
DRIVE SPEED--LOW	1.5 MPH	2.4 km/hr.
DRIVE SPEED--HIGH	3.5 MPH	5.6 km/hr.
HIGH SPEED CUTOUT	12'	3.65 m
LIFT/LOWER SPEED	48/45 sec.	48/45 sec.
POWER SYSTEM	20 HP	20 HP
BATTERY VOLTAGE	12 VDC	12 VDC
CAPACITIES-BATTERY	100 AMP/HR	100 AMP/HR
CAPACITIES-HYDRAULIC TANK	18 GAL	67.51 l
CAPACITIES-FUEL TANK	15 GAL	56.78 l
ALTERNATOR	20 AMP	20 AMP
BATTERY CHARGER	---	---
TIRE SIZE	10 X 15 LT	---
OUTRIGGERS/STABILIZERS	MANUAL	MANUAL
SHIPPING WEIGHT	5640#	2558.26 kg.
SHIPPING CUBE	422.5 cu. ft.	11.96 cu. m

MARKLIFT SELF-PROPELLED SCISSOR
(ROUGH TERRAIN MODELS)

All Marklift units are tested and operated to assure their proper operating condition before shipment.

At this time, all necessary adjustments are made and an overall physical inspection is conducted. After the unit is delivered, some minor adjustments and inspections must be made before putting the unit into service.

The following items should be reviewed:

1. Check gasoline power units.
 - A. Engine oil level
 - B. Air filter
 - C. Fuel filter
 - D. Fuel level
 - E. Fuel lines and valves

2. Check electrical system by plugging hand control box into platform receptacle.
 - A. Forward C. Left E. up
 - B. Reverse D. Right F. Down

3. Inspect all electrical connections.
 - A. See B. Feel C. Tighten

4. Check hydraulic system.
 - A. Hydraulic Fluid Level
 - B. In-Line Pressure Valve Filter
 - C. Hydraulic Lines
 - D. Hydraulic Pump
 - E. Hydraulic Cylinders
 - F. Emergency Lowering Valve

2. STEERING

The steering of the machine is done from the hand control box only. When the engine is running, by pushing the toggle switch for the steering to the left, the front wheels will go left. Pushing the switch to the right, the front wheels will go to the right. Because a momentary type switch is used, when the operator releases the switch it will automatically return to the off position. The wheels will remain at an angle until returned, by pushing the toggle switch in the opposite direction.

3. LIFT

Raising and lowering of the platform is done from either the hand control box or the switch panel in the component box. A momentary switch has been positioned so that in order to raise the platform the operator must push the switch to the up position, and to lower the platform the operator must push the switch to the down position. When the switch is released, it will automatically return to the off position, and the platform will remain stationary.

There is an emergency lowering valve which can be reached through the hole in the front cover of the component box. This valve, as part of the hydraulic system, can be used to safely lower the platform if there is a loss of electrical power, or if the operator is injured while on the fully extended platform. Before the platform will lift again the emergency lowering valve must be closed.

MARKLIFT SELF-PROPELLED SCISSOR
(ROUGH TERRAIN MODELS)COMMON

<u>QTY</u>	<u>PART NO.</u>	<u>DESCRIPTION</u>
2	44A	CUSHION CYLINDER SEAL KIT
2	4019	ON/OFF SWITCH
2	4020	P.B. START SWITCH-GAS ONLY

BILL OF MATERIAL IS FOR REFERENCE ONLY

			1	25		BRAKE RESISTOR	
1				34	20571	HOURMETER	
	1			33	446	INVERTER	
		1		32	30408	BACK UP HORN AND FLASHER	
			1	31	4012	PUSH BUTTON SWITCH	BLACK
			1	30	4011	PUSH BUTTON SWITCH	RED
			1	29	4034 -	CABLE	3 CONDUCTOR
			1	28	4033 -	CABLE HARNESS ASSEMBLY	
		1		27	4069-7	UPPER CONTROL BOX ASSEMBLY	
			1	26	4069-5	UPPER CONTROL BOX ASSEMBLY	
			1	25	20373	LIMIT SWITCH	
			1	24	4017	ON OFF SWITCH	
			1	23	20481	ON OFF SWITCH	
			1	22	20523	TIME DELAY RELAY	
		1	1	21	4019	ON OFF SWITCH	
			1	20		HYDRAULIC MANIFOLD	
			1	19	20803	LIMIT SWITCH	
			1	18	2624	PLUG 3 PRONG	
			1	17		BUZZER	
			1	16	4018	EMERGENCY ON OFF SWITCH	
			3	15	4021	MOMENTARY SWITCH	
			1	14	4106	DRIVE SWITCH	
			1	13	4060	RECEPTACLE	
			1	12	4083	RELAY	400 AMPS
			1	11	4006	BATTERY CHARGER	
			1	10	3015	MOTOR	
			12	9		BATTERY	6V 250 AMPS
			1	8	20562	CIRCUIT BREAKER	20 AMPS
			1	7	4031	LIGHT	RED
		4	12	6	4045	DIODE	6 AMPS
			1	5	117A	TERMINAL BLOCK END	
			20	4	4027	TERMINAL BLOCK	
		1	4	3	4032	RELAY	
			1	2	90387	TILT SWITCH ASSEMBLY	
			1	1	2297	PRESSURE LIMIT SWITCH	
11050	11021	11011	QTY. REQ'D	ITEM NO.	PART OR IDENTIFYING NO.	DESCRIPTION	DATA SPECIFICATIONS SIZES, NOTES, SUPPLIERS
QTY PER OPTION			BILL OF MATERIAL DWG NO. 30437				

MARKLIFT SELF-PROPELLED SCISSOR
(ROUGH TERRAIN MODELS)

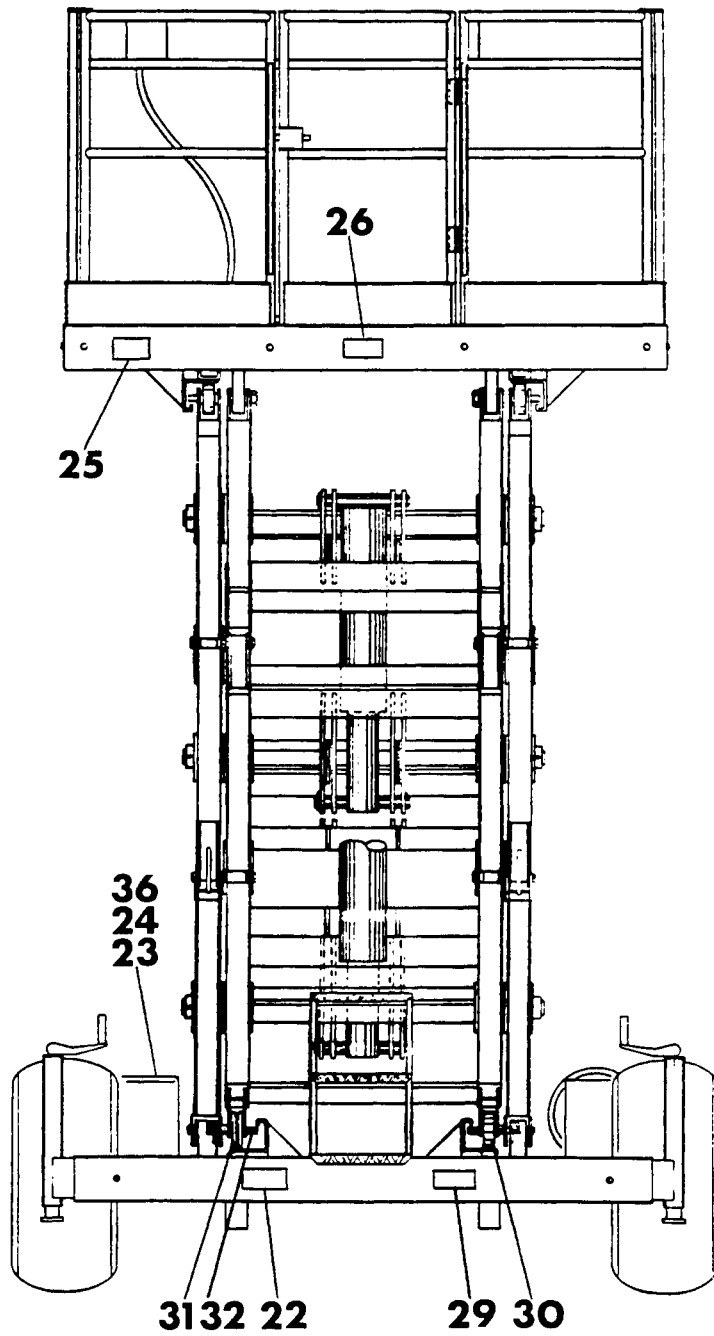
INDEX

<u>FIG. NO.</u>	<u>TITLE & MODEL</u>	<u>PAGE</u>
1	FINAL ASSEMBLY (RT26E)	1
1A	FINAL ASSEMBLY (RT31E)	5
1B	FINAL ASSEMBLY (RT40E)	9
1C	FINAL ASSEMBLY (RT25G)	13
1D	FINAL ASSEMBLY (RT25G) (1981)	17
1E	FINAL ASSEMBLY (RT26G)	21
1F	FINAL ASSEMBLY (RT31G)	25
1G	FINAL ASSEMBLY (SRT31G)	29
1H	FINAL ASSEMBLY (RT40G)	33
2	DECK ASSEMBLY (RT25G)	37
2A	DECK ASSEMBLY (RT25G) (1981)	39
2B	DECK ASSEMBLY (RT26E) (RT26G) (RT31E) (RT31G) (SRT31G)	41
2C	DECK ASSEMBLY (RT40E) (RT40G)	43
3	HAND CONTROL BOX ASSEMBLY (RT26E) (RT31E)	45
3A	HAND CONTROL BOX ASSEMBLY (RT40E)	47
3B	HAND CONTROL BOX ASSEMBLY (RT25G)	49
3C	HAND CONTROL BOX ASSEMBLY (RT26G) (RT31G)	51
3D	HAND CONTROL BOX ASSEMBLY (SRT31G)	53
3E	HAND CONTROL BOX ASSEMBLY (RT40G)	55
4	SCISSOR ASSEMBLY (RT25G)	57
4A	SCISSOR ASSEMBLY (RT25G) (1981)	60
4B	SCISSOR ASSEMBLY (RT26E) (RT26G)	64
4C	SCISSOR ASSEMBLY (RT31E) (RT31G) (SRT31G)	66
4D	SCISSOR ASSEMBLY (RT40E) (RT40G)	68
5	FRAME ASSEMBLY (RT25G) (BEFORE JAN 1981)	72
5A	FRAME ASSEMBLY (RT25G) (BEGINNING JAN 1981)	75
5B	FRAME ASSEMBLY (RT26E) (RT31E)	78
5C	FRAME ASSEMBLY (RT26G) (RT31G)	81
5D	FRAME ASSEMBLY (SRT31G)	84

ITEM	PART NUMBER	DESCRIPTION	QTY
1-	30010	FINAL ASSEMBLY	1
-1	8111	FRAME ASSEMBLY (SEE FIG.5B)	1
-2	8028	SCISSOR ASSEMBLY (SEE FIG.4B)	1
-3	30556	DECK ASSEMBLY (SEE FIG.2B)	1
-4	4069-1	HAND CONTROL BOX ASSEMBLY (SEE FIG.3)	1
-5	60336	EAR PIVOT BOLT	2
-6	61310	NUT	4
-7	780	ADAPTER	2
-8	3023-1	SPACER	2
-9	3059	CHECK VALVE	2
-10	339-186-186B	HOSE ASSEMBLY - 16"	2
-11	2457	90° ELBOW	1
-12	235-2500-2501	TUBE ASSEMBLY - ½ X 18	2
-13	2470	UNION	4
-14	339-186B-186B	HOSE ASSEMBLY - 27"	1
-15	764	TUBE CLAMP	13
-16	235-250-2501	TUBE ASSEMBLY - ½ X 10'	1
-17	235-250-2501	TUBE ASSEMBLY - ½ X 10'	1
-18	2432	TEE	1
-19	339-186B-186B	HOSE ASSEMBLY - 31"	1
-20	2017	DECAL - HYDRAULIC FLUID SPEC.	2
-21	2003	DECAL - BATTERY WATER LEVEL	1
-22	2041	DECAL - "DO NOT LIFT FROM THIS END"	2
-23	2019	DECAL - "EMERGENCY LOWERING VALVE"	1
-24	2016	DECAL - "WARNING DO NOT WORK UNDERNEATH ETC."	1
-25	2027	DECAL - "LOAD CAPACITY 2000 LBS."	4
-26	2018	DECAL - ANSI & OSHA SPEC.	1
-27	30416	DECAL - OPERATING INSTRUCTIONS	1
-28	2049	DECAL - MARKLIFT	2
-29	2012	PLATE - MODEL/SERIAL NUMBER	1
-30	2361	DECK ROLLER	3
-31	2362	"V" DECK ROLLER	1
-32	2364	ROLLER PIN	4

ITEM	PART NUMBER	DESCRIPTION	QTY
-32	2364	ROLLER PIN	4
-33	4034	POWER TO PLATFORM CABLE	1
-34	30392	ARM CONTROL CABLE ASSEMBLY	1
-35	60350	EAR PIVOT BOLT	2
-36	3006	MAIN LIFT CYLINDER (SEE FIG.6D)	2
-37	2730	CONTROL CABLE ASSEMBLY	1
-38	30809	MAIN LIFT CYLINDER (BEGINNING NOVEMBER 1981) (SEE FIG. 6D)	2

FIGURE 1E - FINAL ASSEMBLY (RT26G)



ITEM	PART NUMBER	DESCRIPTION	QTY
-33	4034	POWER TO PLATFORM CABLE	1
-34	30392	ARM CONTROL CABLE ASSEMBLY	1
-35	60350	EAR PIVOT BOLT	2
-36	2020	DECAL - "GASOLINE OR PETROL"	1
-37	2004	DECAL - "USE VAPOR TANK ONLY"	1
-38	3006	MAIN LIFT CYLINDER (SEE FIG.6D)	2
-39	2730	CONTROL CABLE ASSEMBLY	1
-40	30809	MAIN LIFT CYLINDER (BEGINNING NOVEMBER 1981) (SEE FIG. 6D)	2

FIGURE 2B - DECK ASSEMBLY (RT26E) (RT26G)
 (RT31E) (RT31G) (SRT31G)

42

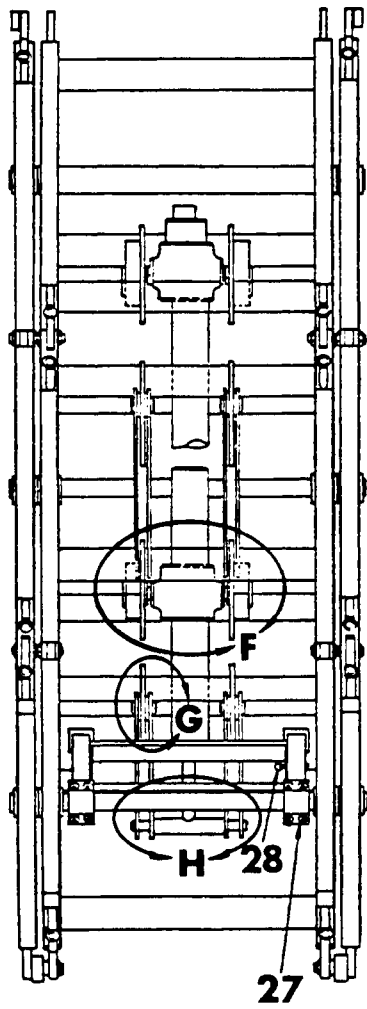
ITEM	PART NUMBER	DESCRIPTION	QTY
2B-	30556	DECK ASSEMBLY	1
-1	30507	DECK WELDMENT	1
-2	30553	PLYWOOD FLOOR SECTION	3
-3	30568	GUARD RAIL - R.H. SIDE - REAR	1
-4	30569	GUARD RAIL - R.H. SIDE - FORWARD	1
-5	30566	GUARD RAIL - L.H. SIDE - REAR	1
-6	30567	GUARD RAIL - L.H. SIDE - FORWARD	1
-7	30541	GUARD RAIL - FORWARD	1
-8	30561	GUARD RAIL - SWING GATE ASSEMBLY	1
-9	60154	HEX HEAD CAPSCREW - $\frac{1}{4}$ -20 UNC X 2 $\frac{3}{4}$	9
-10	63301	LOCKWASHER - $\frac{1}{4}$	9
-11	60701	HEX NUT - $\frac{1}{4}$ -20 UNC	9
-12	61706	SELF TAPPING FLAT SLOTTED HEAD CAPSCREW $\frac{1}{4}$ -20 UNC X 1 $\frac{1}{2}$	48
-13	20515	RECEPTACLE	1
-14	355	BELL BOX COVER	1
-15	355	BELL BOX	1
-16	62614	ROUND HEAD MACHINE SCREW - 6-32 UNCx1 $\frac{1}{2}$	2

REV.1
1-83

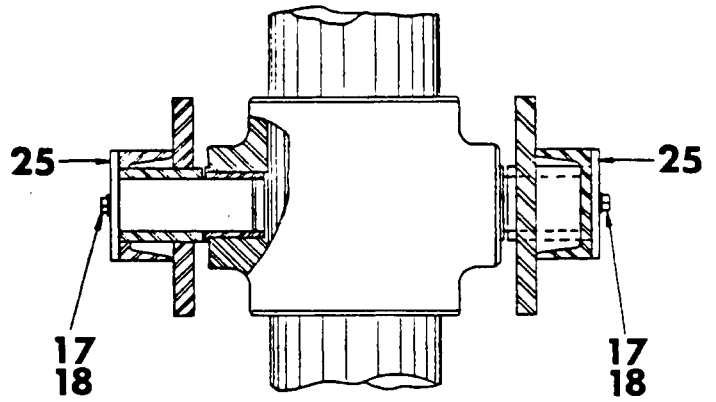
FIGURE 3C - HAND CONTROL BOX ASSEMBLY
(RT26G) (RT31G)

52

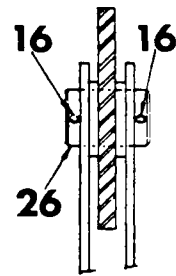
ITEM	PART NUMBER	DESCRIPTION	QTY
-14	2015	DECAL - WARNING UNSTABLE CONDITION	1
-15	2720	HEX HEAD SELF TAPPING SCREW - NO.6-3/8	6
-16	4017	TOGGLE SWITCH - CREEP SPEED	1
-17	2014	DECAL - WARNING HIGH VOLTAGE	1
-18	772	HOLE PLUG	2
-19	65189	O-RING	1
-20	65131	SEALING NUT	1



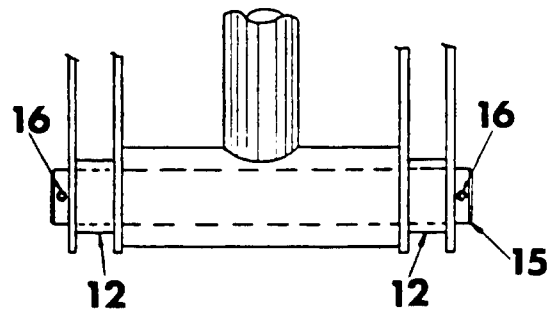
VIEW E



DETAIL F



DETAIL G



DETAIL H

REV.1
1-83

FIGURE 4D - SCISSOR ASSEMBLY (RT40E) (RT40G)

71.1

ITEM	PART NUMBER	DESCRIPTION	QTY
-33	62207	SHAFT COLLAR SET SCREW	8
-34	30809	MAIN LIFT CYLINDER (BEGINNING NOVEMBER 1981) (SEE FIG. 6D)	2

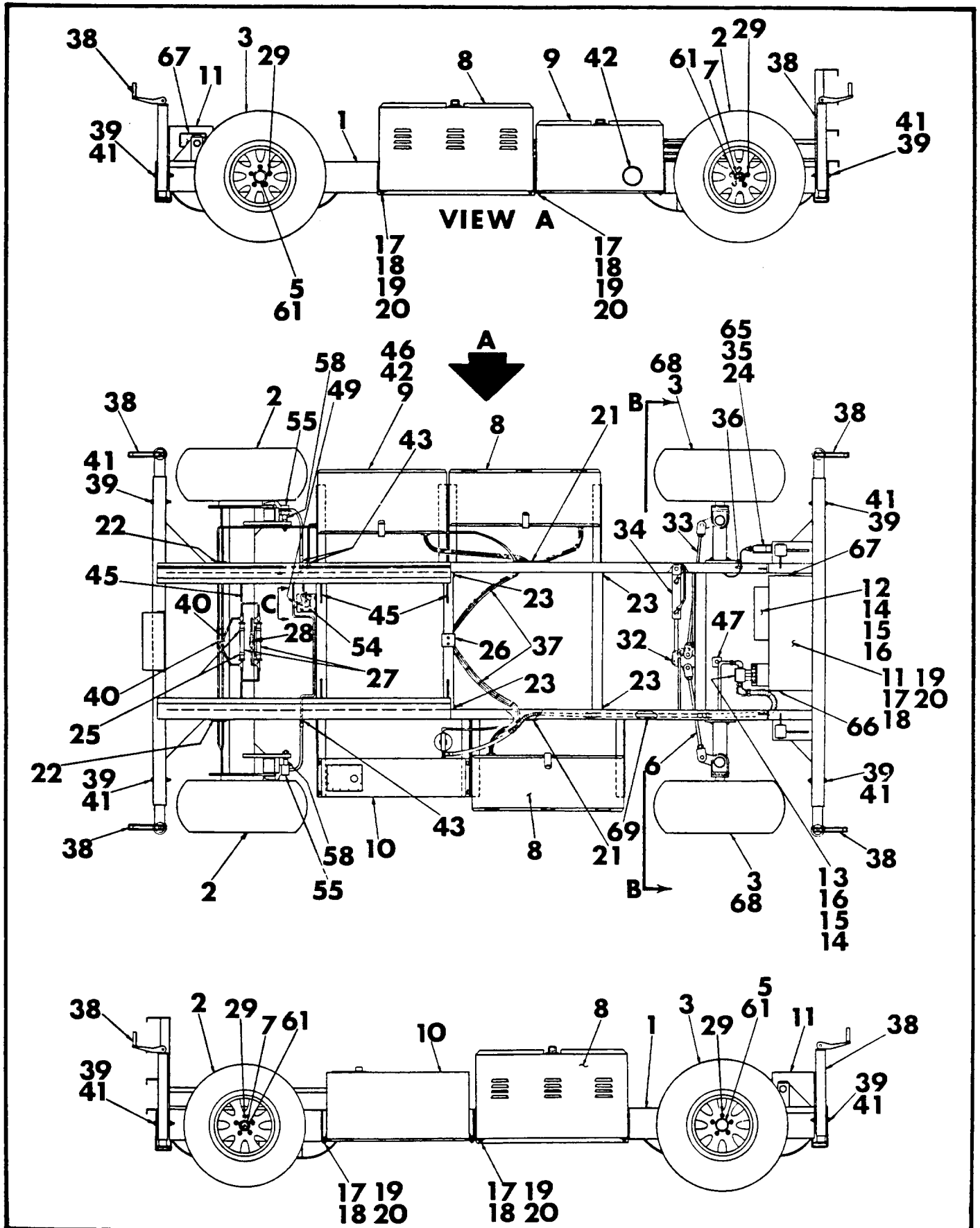
REV.1
1-83

FIGURE 5B - FRAME ASSEMBLY (RT26E) (RT31E)

80.1

ITEM	PART NUMBER	DESCRIPTION	QTY
-60	20796	BELL CRANK PIN	1
-61	6313-2	FRONT AXLE ASSEMBLY -(L.H.) (SEE FIG. 16A.1)	1
-62	6313-1	FRONT AXLE ASSEMBLY -(R.H.) (SEE FIG. 16A.1) (BEFORE JULY 1980)	1

ITEM	PART NUMBER	DESCRIPTION	QTY
-33	30302	TIE ROD ASSEMBLY	1
-34	3013	STEERING CYLINDER (SEE FIG. 19A)	1
-35	863	SPRING GUARD	2
-36	764	CLAMP	5
-37	3013-2	CLEVIS PIN (NEW PART NO. 66039, 2356 & 64101)	2
-38	3024	HYDRAULIC OUTRIGGER ASSEMBLY WITH SWITCH (SEE FIG. 15)	1
-39	29-B	PIN WITH CHAIN	4
-40	30721	HYDRAULIC TUBING KIT	1
-41	721	PIN	4
-42	411	RUBBER MOULDING - 12½	1
-43	2238-1	ELECTRIC BRAKE - LEFT HAND	1
-44	2238-2	ELECTRIC BRAKE - RIGHT HAND	1
-45	165	RUBBER MOULDING - SUCTION HOSE - 4	3
-46	64303	COTTER PIN	2
-47	20796	STEERING PIN	1
-48	60603	CAPSCREW - 5/16-18 UNC X 3/4	1
-49	63302	LOCK WASHER - 5/16 SPLIT	1
-50	30301	TIE ROD ASSEMBLY (SEE FIG. 23 & 24)	1
-51	30601	HOSE KIT	1
-52	3026	HYDRAULIC OUTRIGGER ASSEMBLY (SEE FIG. 15A)	3
-53	60903	JAM NUT - 1-14 UNS -(L.H.)	2
-54	60902	JAM NUT - 1-14 UNS -(R.H.)	2
-55	60514	HEX HEAD CAPSCREW - 5/8-11 UNC X 2	8
-56	30492	FRONT AXLE ASSEMBLY (L.H.)	1
-57	30493	FRONT AXLE ASSEMBLY (R.H.) (BEGINNING JULY 1980) (SEE FIG. 16A)	1
-58	6313-2	FRONT AXLE ASSEMBLY (L.H.) (BEFORE JULY 1980) (SEE FIG. 16A.1)	1
-59	6313-1	FRONT AXLE ASSEMBLY (R.H.) (BEFORE JULY 1980) (SEE FIG. 16A.1)	1
-60	20807	LIMIT SWITCH ARM	2
-61	2240	FRONT HUB & DRUM (SEE FIG. 17A.1)	2



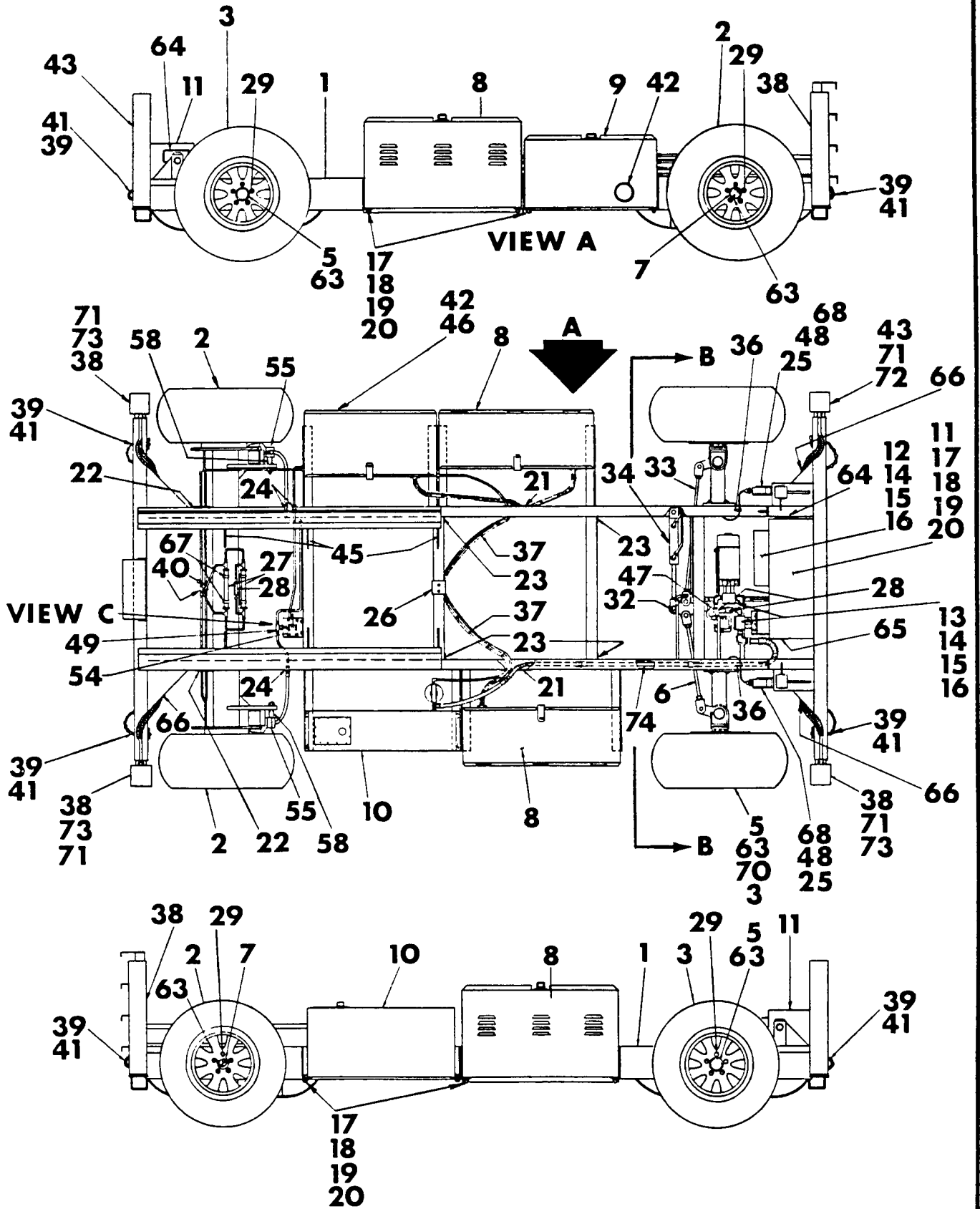
CLICK HERE TO **DOWNLOAD** THE COMPLETE MANUAL

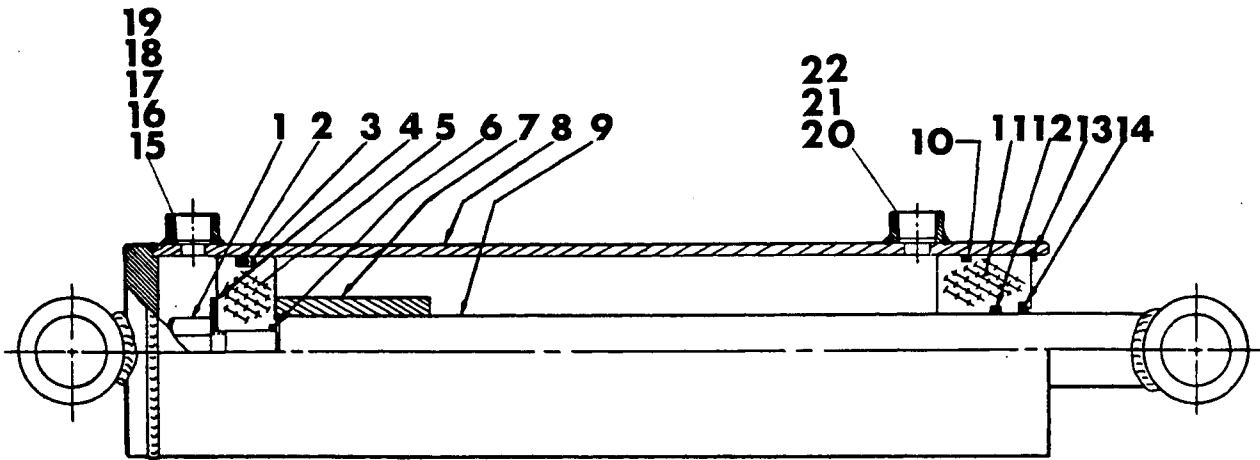
- Thank you very much for reading the preview of the manual.
- You can download the complete manual from: www.heydownloads.com by clicking the link below



- Please note: If there is no response to CLICKING the link, please download this PDF first and then click on it.

CLICK HERE TO **DOWNLOAD** THE COMPLETE MANUAL





ITEM	PART NUMBER	DESCRIPTION	QTY
6-	3065	MAIN LIFT CYLINDER (HCE)	1
-1		LOCK NUT 7814NF	1
-2		O-RING 15342	1
-3		BACK-UP RING 16342	1
-4		WASHER 78USS	1
-5		PISTON 54102	1
-6		O-RING 15118	1
-7		STOP TUBE 85141	1
-8		CYLINDER HOUSING 840200	1
-9		ROD ASSEMBLY 714200	1
-10		O-RING 15240	1
-11		GLAND 44108	1
-12		O-RING 15222	1
-13		RETAINER RING 30400-3	1
-14		EXCLUDER 10017	1
-15	2450	90° STREET ELBOW	1
-16	2477	REDUCER	1
-17	2498	ADAPTER	1
-18	750	CHECK VALVE	1
-19	2475	ADAPTER	1

REV.1
1-83

FIGURE 7B.1 - COMPONENT BOX ASSEMBLY (RT26E & G)
(RT31E & G) (SRT31G) (RT40E & G)

108.4

(BEFORE MARCH 1980)

ITEM	PART NUMBER	DESCRIPTION	QTY
-32		TUBE ASSEMBLY - 1/2	1
-33		TUBE ASSEMBLY - 3/8	1
-34		TUBE ASSEMBLY - 3/8	1
-35		TUBE ASSEMBLY - 3/8	1
-36		TUBE ASSEMBLY - 1/4	1
-37	3019-3043	MANIFOLD PACKAGE FOR SRT31G (SEE FIG. 8F.3)	1
-38	2475	PIPE NIPPLE	2
-39	2498	FEMALE PIPE ADAPTOR	1
-40	2450	STREET ELBOW	2
-41	2527	MALE QUICK DISCONNECT	1
-42	845	CAP	1
-43	2438	STRAIGHT THREAD ELBOW	5
-44	2509	STRAIGHT THREAD CONNECTOR	1
-45	2474	STRAIGHT THREAD CONNECTOR	2
-46	2420	STREET TEE	1
-47	2508	MALE CONNECTOR	1
-48	2476	MALE CONNECTOR	1
-49	2451	STREET ELBOW	2

ITEM	PART NUMBER	DESCRIPTION	QTY
7H-	30722	COMPONENT BOX ASSEMBLY WITH OUTRIGGER CONTROL	1
-1	8315	COMPONENT BOX	1
-2	30712	MANIFOLD ASSEMBLY (SEE FIG.8C)	1
-3	30651	CONTROL PANEL ASSEMBLY (SEE FIG.7K)	1
-4	30495	PRESSURE LIMIT SWITCH ASSEMBLY (SEE FIG.10)	1
-5	20370	NEEDLE VALVE	2
-6	2476	CONNECTOR	2
-7	4050	BRAKE RESISTOR	1
-8	2428	SWIVEL NUT RUN TEE	1
-9	845	CAP	1
-10	2527	QUICK DISCONNECT	1
-11	2508	MALE FITTING	1
-12	2484	BULKHEAD UNION	7
-13	2486	BULKHEAD UNION	2
-14	60123	HEX HEAD CAPSCREW - $\frac{1}{4}$ -20 UNC X $\frac{3}{4}$	8
-15	63301	LOCK WASHER - $\frac{1}{2}$	9
-16	60701	HEX NUT - $\frac{1}{4}$ -20 UNC	9
-17	50207	BULKHEAD UNION	2
-18	62612	ROUND HEAD CAPSCREW - NO.8 - 32 UNC X $\frac{1}{2}$	2
-19	61502	HEX NUT - NO.8 - 32 UNC	2
-20		TUBE ASSEMBLY - $\frac{1}{2}$	1
-21		TUBE ASSEMBLY - $\frac{1}{2}$	1
-22		TUBE ASSEMBLY - $\frac{1}{2}$	1
-23		TUBE ASSEMBLY - $\frac{1}{2}$	1
-24		TUBE ASSEMBLY - $\frac{1}{2}$	1
-25		TUBE ASSEMBLY - $\frac{1}{2}$	1
-26		TUBE ASSEMBLY - $\frac{1}{2}$	1
-27		TUBE ASSEMBLY - $\frac{1}{2}$	1
-28		TUBE ASSEMBLY - $\frac{3}{8}$	1
-29		TUBE ASSEMBLY - $\frac{3}{8}$	1
-30		TUBE ASSEMBLY - $\frac{3}{8}$	1
-31		TUBE ASSEMBLY - $\frac{3}{8}$	1
-32		TUBE ASSEMBLY - $\frac{3}{8}$	1

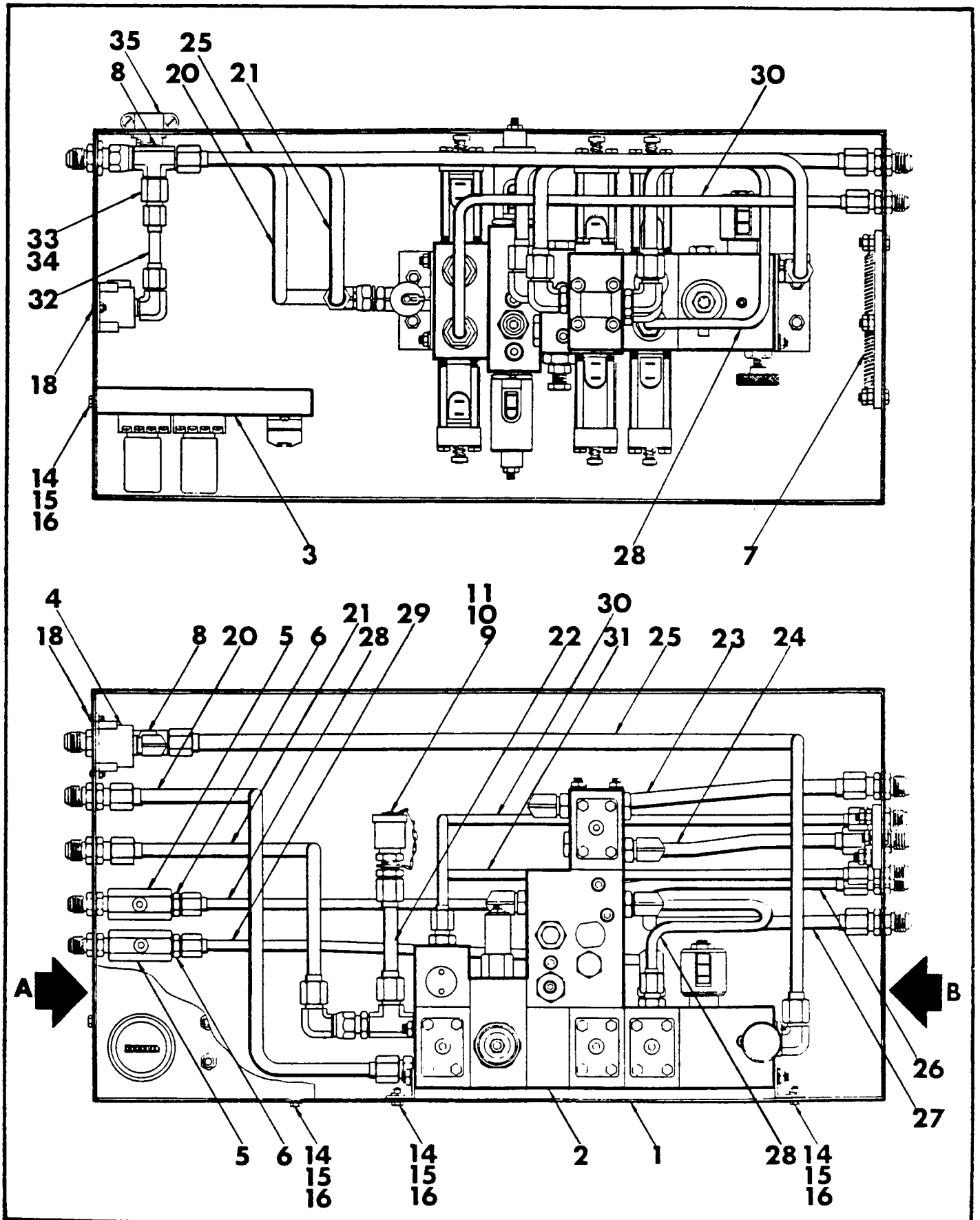
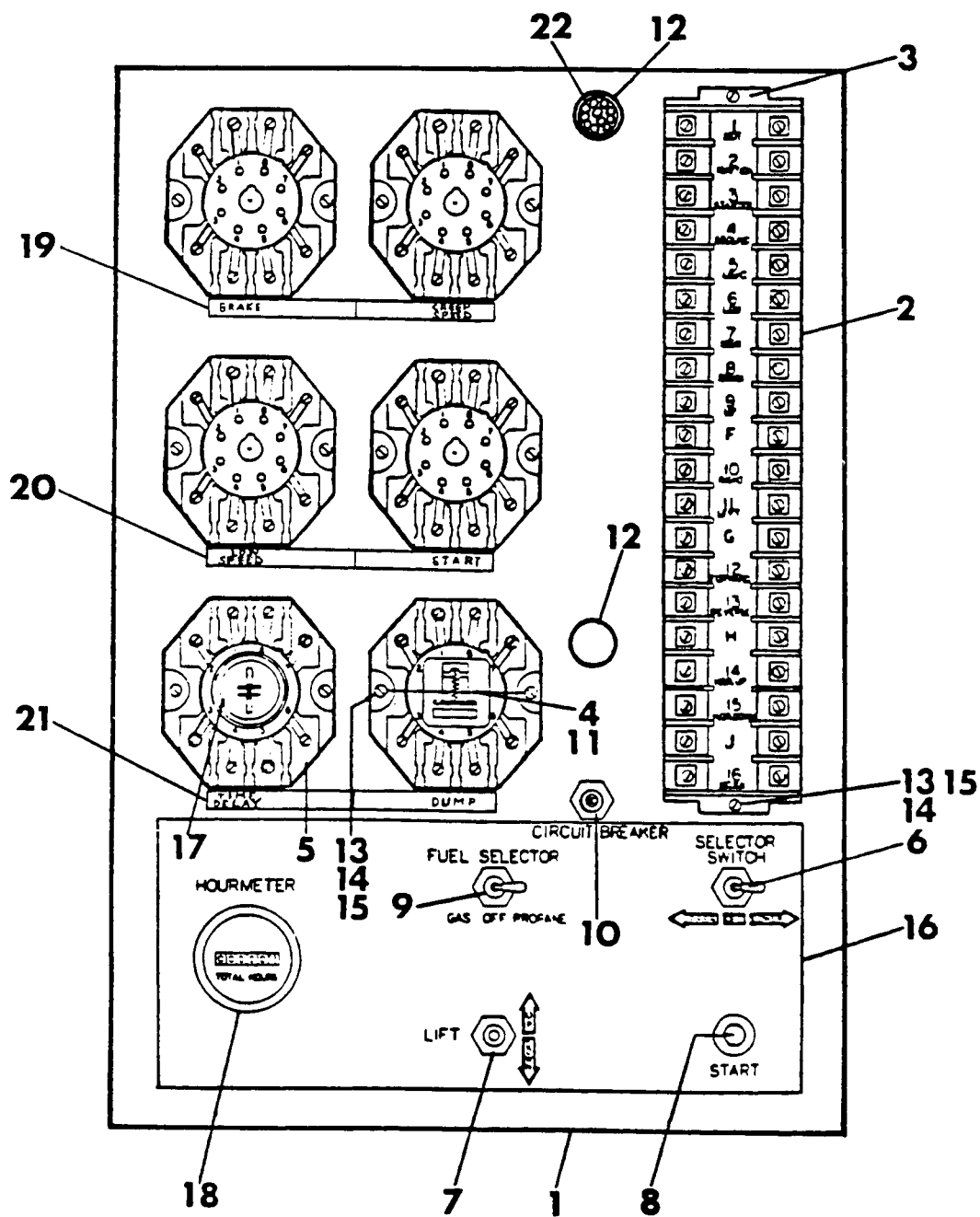
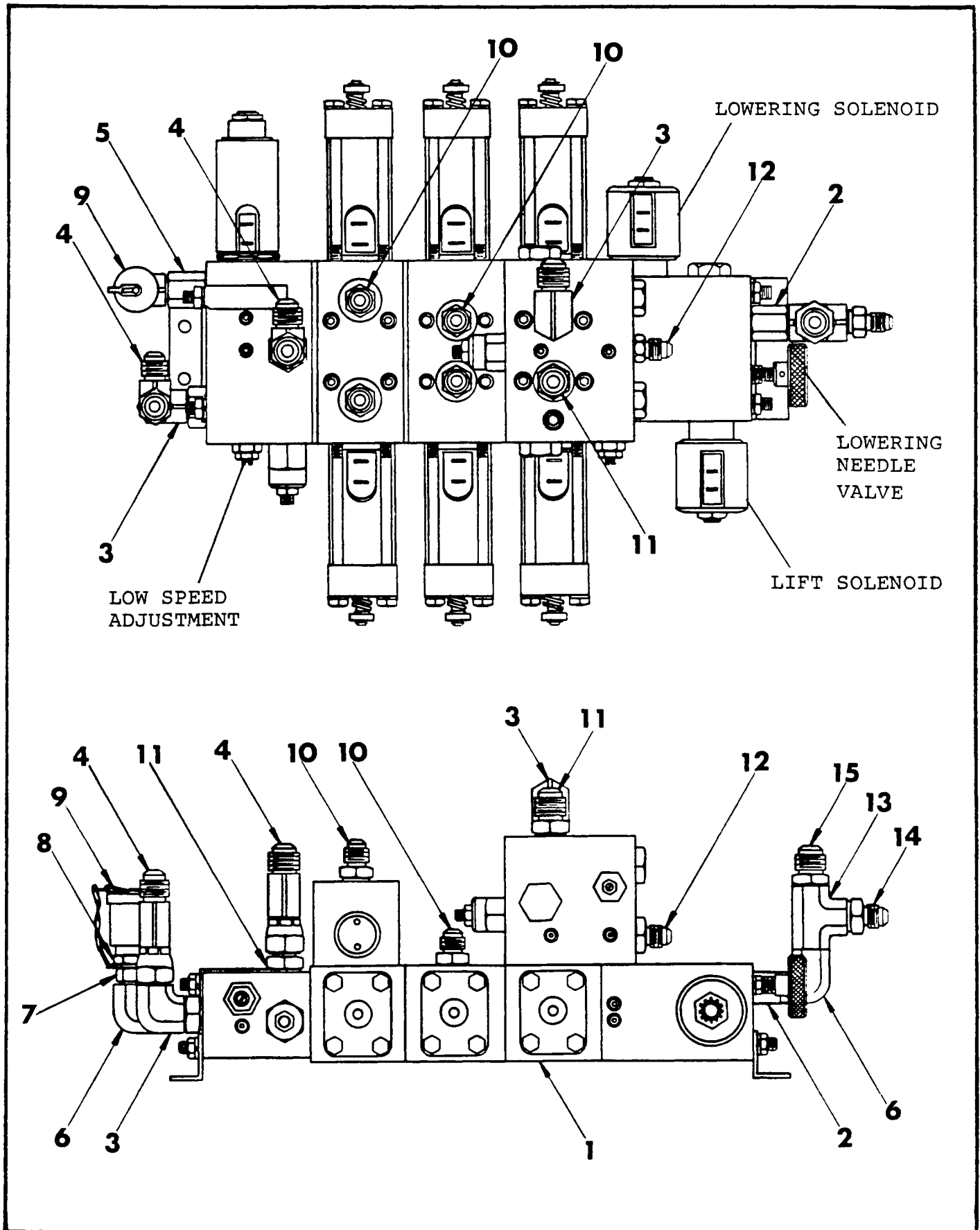
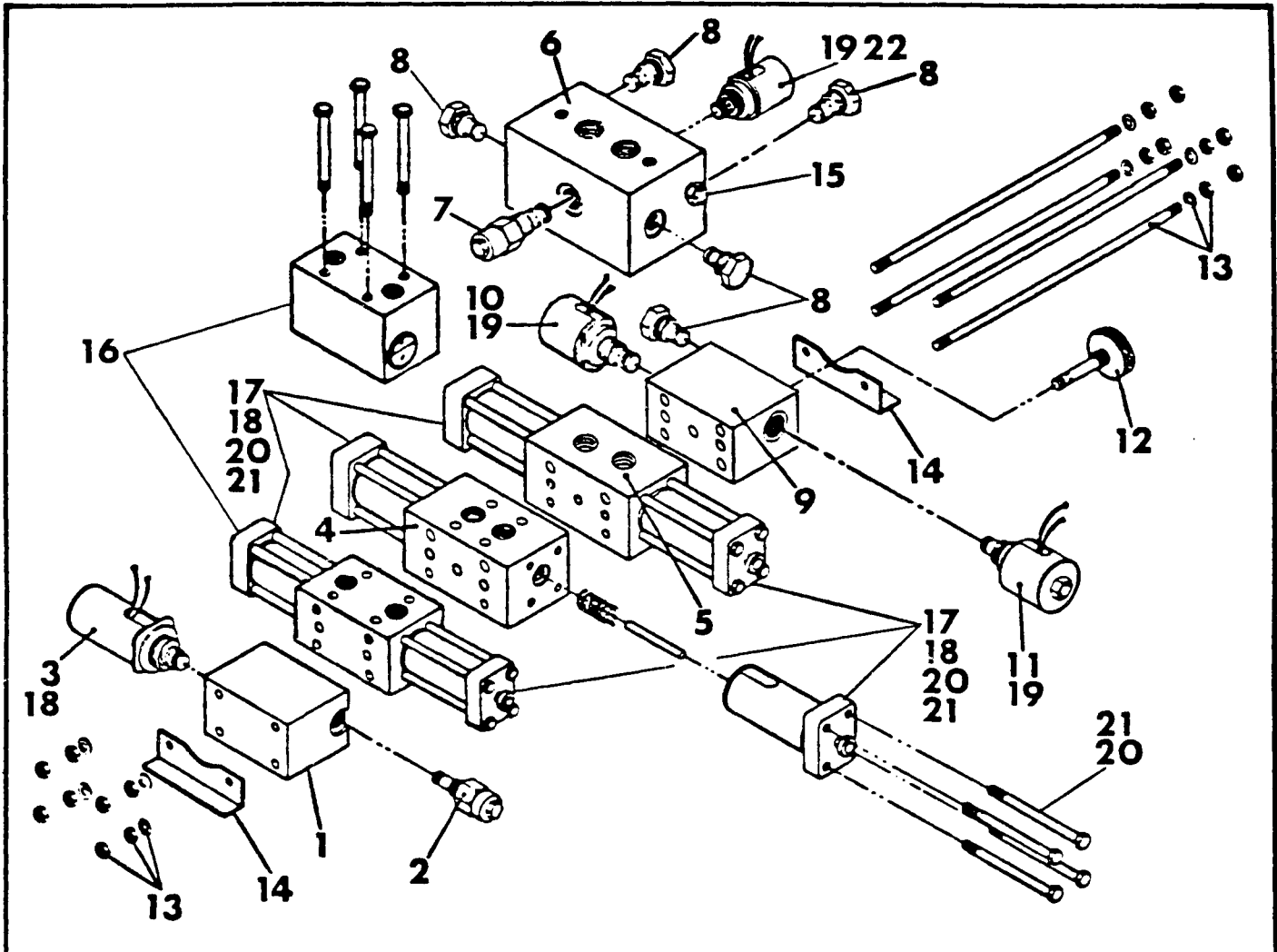


FIGURE 7K - COMPONENT BOX CONTROL PANEL ASSEMBLY
(RT25G) (RT26G) (RT31G) (SRT31G) (RT40G)
(BEGINNING MARCH 1980)







ITEM	PART NUMBER	DESCRIPTION	QTY
8F.3-	3019-3043	MANIFOLD PACKAGE	1
-1	3064	DUMP/RELIEF BLOCK (ONLY)	1
-2	3044	RELIEF VALVE	1
-3	3045	HIGH SPEED VALVE ASSEMBLY	1
-4	3019-2	STEERING VALVE ASSEMBLY	1
-5	3019-3	DRIVE VALVE ASSEMBLY	1
-6	3019-4	LOW SPEED - CUSHION VALVE ASSEMBLY	1
-7	3046	CUSHION RELIEF VALVE	1
-8	3048	CHECK VALVE	5
-9	3019-5	LIFT/LOWER VALVE BLOCK ASSEMBLY	1
-10	3051	LOWERING VALVE	1
-11	3051	LIFT VALVE	1

FIGURE 8H - MANIFOLD PACKAGE-WITH OUTRIGGER
CONTROL (RT26E) (RT26G) (RT31E) (RT31G) (OPTION)

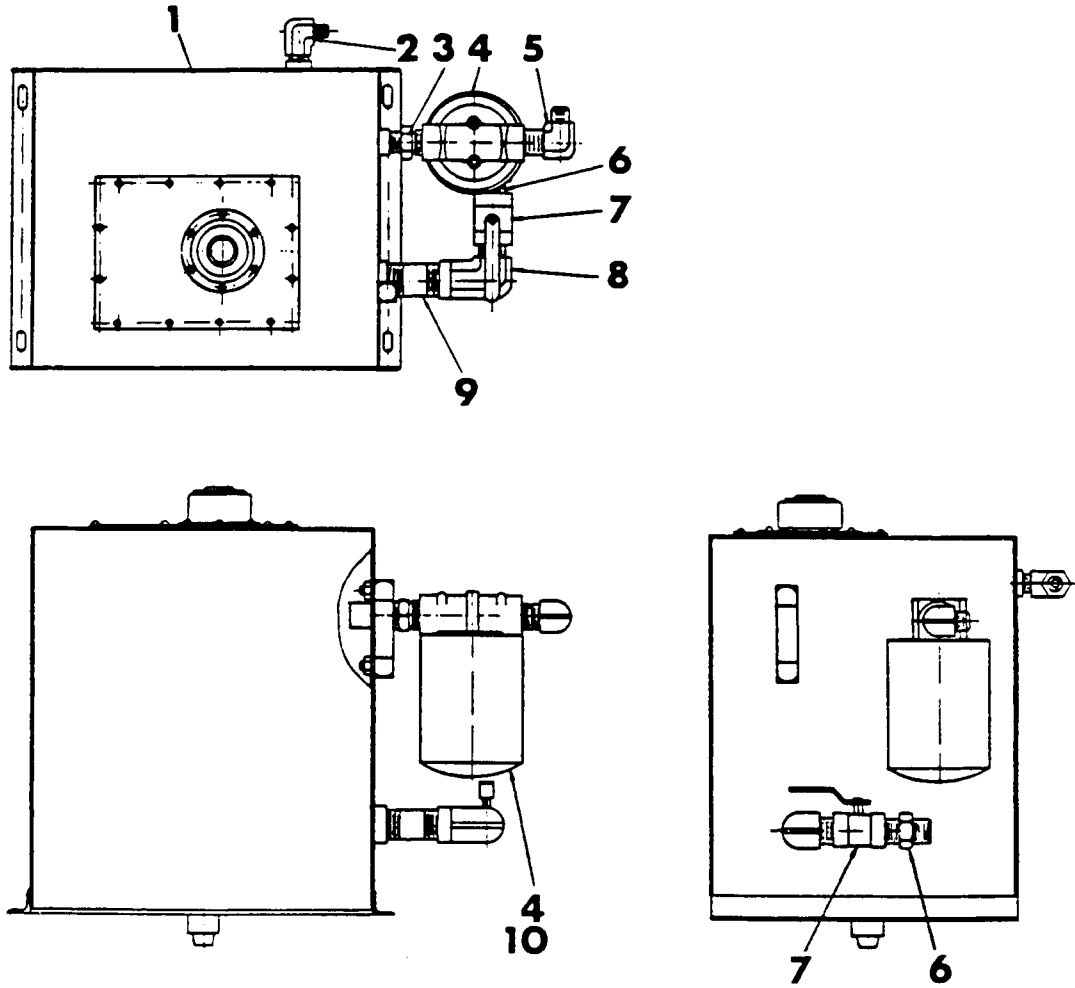
154

ITEM	PART NUMBER	DESCRIPTION	QTY
-10	66010	HEX JAM NUT	20
-11	66011	LOCKWASHER	20
-12	66012	FOOT	2
-13	66013	BANKING SEAL	10
-14	66014	SPACER BLOCK	1
-15	66016	O-RING	20
-16	66050	SHUTTLE VALVE CARTRIGE	1
-17	66051	O-RING (A-112)	1
-18	66052	O-RING (A-113)	1
-19	66053	O-RING GASKET	2
-20	66054	BLOCK	1
-21	66055	MANUAL RELEASE ASSEMBLY	7
-22	66056	HEX HEAD CAP SCREW	28
-23	63301	LOCKWASHER (MED) $\frac{1}{2}$	28
-24	66057	COIL	1
-25	66058	SPOOL ASSEMBLY	1
-26	66059	NEEDLE VALVE-EMERGENCY LOWERING	1
-27	66060	O-RING	2
-28	66061	BACK-UP RING	2
-29	66062	O-RING	2
-30	66063 or 3051	SOLENOID VALVE CARTRIDGE-LIFT/LOWERING	2
-31	66064 or 4074	COIL-SHORT	2
-32	66065	O-RING GASKET	5
-33	66066	O-RING	3
-34	66067	BACK-UP RING	2
-35	66068	BLOCK	1
-36	66069	CHECK VALVE	1
-37	66070	BLOCK	1
-38	66071	BLOCK	1
-39	66072	BACK-UP RING	1
-40	66073 or 4073	COIL-LONG	8
-41	66074	SPOOL-DRIVE	2
-42	66075	BLOCK	2
-43	66076	NEEDLE VALVE	1

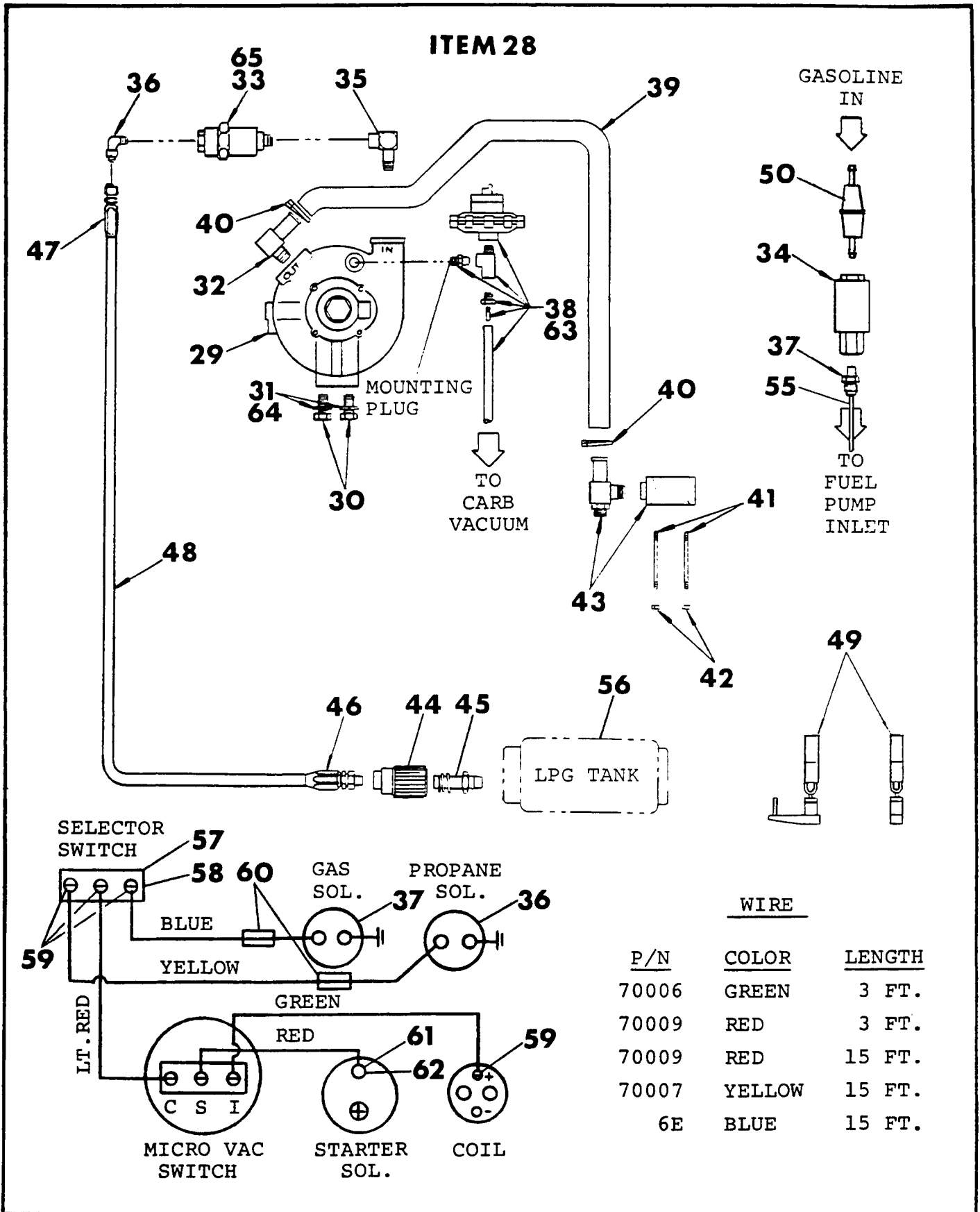
REV.1
1-83

FIGURE 11A.1 - HYDRAULIC TANK ASSEMBLY (RT25G)
(BEGINNING MARCH 1980)

162.2



ITEM	PART NUMBER	DESCRIPTION	QTY
11A.1	30329	HYDRAULIC TANK ASSEMBLY	1
-1	30286	HYDRAULIC TANK (SEE FIG.11A.2)	1
-2	2451	90° ELBOW	1
-3	2483	MALE CONNECTOR	1
-4	30306	RETURN LINE FILTER	1
-5	2442	90° STREET ELBOW	1
-6	2510	MALE CONNECTOR	1
-7	3033	SHUT OFF VALVE	1
-8	2459	90° STREET ELBOW	1
-9	2494	NIPPLE	1
-10	16947	RETURN LINE FILTER ELEMENT	1



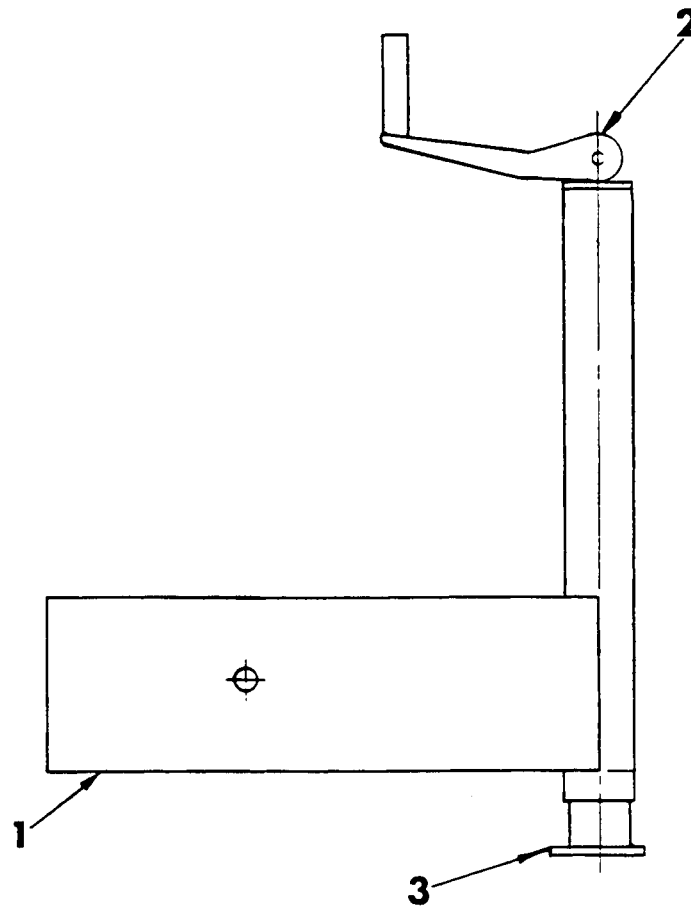
WIRE		
P/N	COLOR	LENGTH
70006	GREEN	3 FT.
70009	RED	3 FT.
70009	RED	15 FT.
70007	YELLOW	15 FT.
6E	BLUE	15 FT.

REV.1
1-83

FIGURE 14 - BATTERY BOX ASSEMBLY (RT26E)
(RT31E) (RT40E) (BEGINNING MAY 1977)

176

ITEM	PART NUMBER	DESCRIPTION	QTY
14-	30861	BATTERY BOX ASSEMBLY	1
-1	8317	BATTERY BOX	1
-2	4007	BATTERY - 6 VOLT J250 W 11 5/8 X 7 X 11 1/2	4
-3	4083	RELAY - 400 AMP	1
-4	784A	RELAY SOCKET (8 PIN)	1
-5	4032	RELAY - 6 VOLT	1
-6	213	ROMEX CONNECTOR	2
-7	13226-0120 OR 63A	BATTERY CABLE - 12"	3
-8	65139	PLYWOOD - 3/4 X 5 1/2 X 8	1
-9	65277	PLYWOOD - 3/4 X 11 3/4 X 33 1/2	1
-10	62609	SLOTTED ROUND HEAD SCREW NO. 6-32 UNC X 1/2	2
-11	61501	HEX NUT - NO. 6-32 UNC	2
-12	63311	LOCK WASHER - NO. 6	2
-13	60158	HEX HEAD CAP SCREW - 1/4-20 UNC X 3/8	2
-14	60701	HEX NUT - 1/4-20 UNC	2
-15	63301	LOCK WASHER - 1/4	2
-16	4007A	BATTERY - 6 VOLT DRY	8

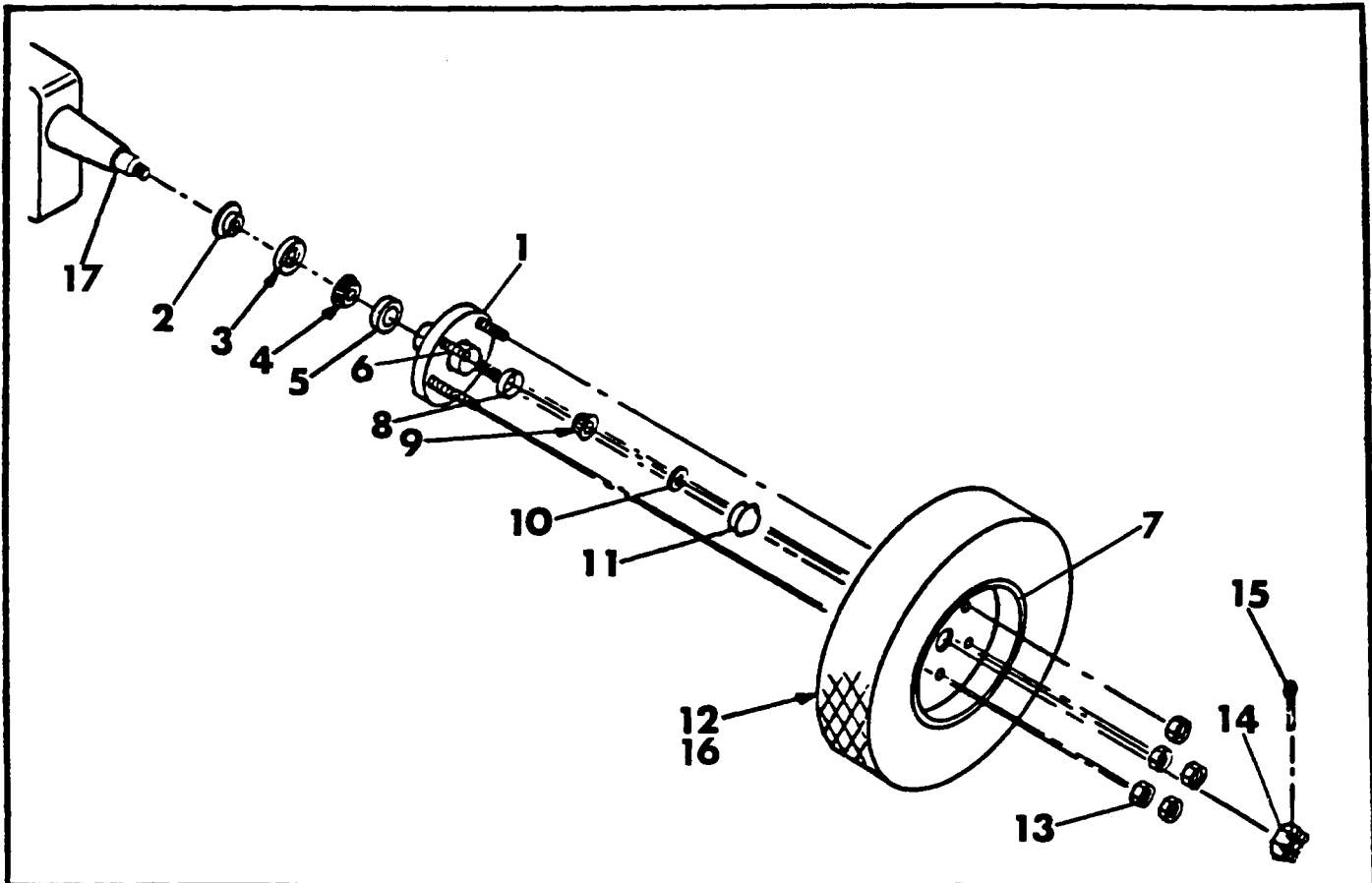


ITEM	PART NUMBER	DESCRIPTION	QTY
15B-	9059-1	MANUAL STABILIZER ASSEMBLY	1
-1	9065	MANUAL STABILIZER FORMED TUBE	1
-2	2215	MANUAL STABILIZER	1
-3	2215-1	STABILIZER PAD	1

REV.1
1-83

FIGURE 16A.3 - FRONT HUB AND WHEEL INSTALLATION
(RT25G) (BEGINNING MARCH 1980)

185.5



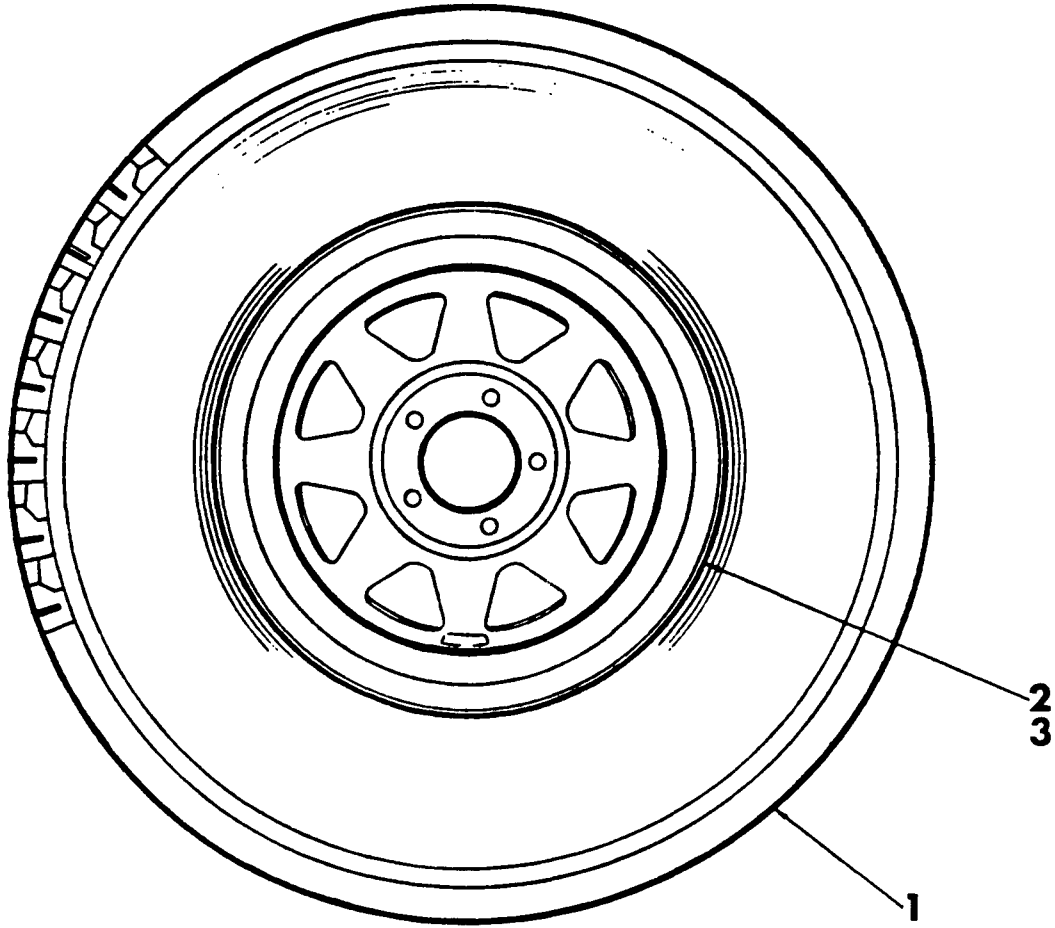
ITEM	PART NUMBER	DESCRIPTION	QTY
16A.3-	30709	FRONT HUB ASSEMBLY	2
-1	30410	FRONT HUB (ONLY)	2
-2	66133	RETAINER RING	2
-3	66134	GREASE SEAL	2
-4	65058	INNER BEARING (NEW PART NO. 66135)	2
-5	66136	INNER CUP	2
-6	66150	STUD	10
-7	466A	WHEEL (ONLY)	2
-8	66138	OUTER CUP	2
-9	66139	OUTER BEARING	2
-10	66140	KEY WASHER	2
-11	66141	DUST CAP	2
-12	466	TIRE & WHEEL (NEW PART NO. 30728)	2
-13	157B	LUG NUT	10
-14	16115	SPINDLE NUT (NEW PART NO. 66142)	2

REV.1
1-83

FIGURE 18B - STEERING AND DRIVE TIRE & WHEEL ASSEMBLY
(RT26E) (RT26G) (RT31E) (RT31G)

190

(BEFORE JULY 1980)



ITEM	PART NUMBER	DESCRIPTION	QTY
18B-	N/A	STEERING AND DRIVE TIRE & WHEEL ASSY	1
-1	157	TIRE	1
-2	157A	WHEEL	1
-3	2252	VALVE STEM	1

REV.1
1-83

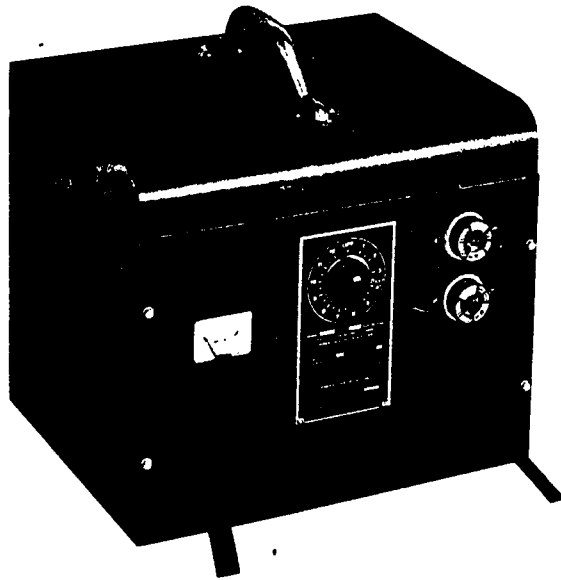
FIGURE 19A - STEERING CYLINDER (RT26E) (RT26G)
(RT31E) (RT31G) (SRT31G) (RT40E) (RT40G)

195.1

(BEGINNING NOVEMBER 1979)

ITEM	PART NUMBER	DESCRIPTION	QTY
-15	331B	SEAL KIT (HPWR) NOTE: SOME UNITS MAY HAVE A 1.5" CYLINDER - PART NO. 3062. CHECK TUBE SIZE OF ITEM NO. 2 BEFORE ORDERING SEAL KIT.	1

OPERATING & SERVICING HANDBOOK



SINCE 1929
CHRISTIE
ELECTRIC CORP.

SERIES "L" BATTERY CHARGERS

OPERATION

BREAK-IN PROCEDURE

Controlled break-in with proper oil and a conscientiously applied maintenance program will help assure satisfactory service for many hours from your Onan engine.

Break-in or ideal fitting of all internal moving metal parts can best be achieved by maintaining proper cooling and correct lubrication during the running-in period. Run the engine at about half load for the first three hours with intermittent periods of full load to control engine break-in. Engine damage can be caused by using the wrong grade and weight of oil and high engine operating temperatures during break-in.

Check the oil level at least every five operating hours. Add oil to keep it at the proper level, but never overfill as overfilling may cause the oil to foam and enter the breather system.

HOT WEATHER OPERATION

When operating the engine in temperatures above 75° F (24° C) pay particular attention to the following items to prevent damage:

1. Keep the engine cooling fins clean and free of

obstruction which would decrease air flow to and from the engine.

2. See that nothing obstructs air flow to and from the engine.
3. Ensure that you are using the proper grade and weight of oil for the temperature the engine is being used in. Check the oil level each time you fill the fuel tank.
4. Check the battery water level more frequently than every 50 hours which is recommended under normal conditions. High temperatures cause faster evaporation.

COLD WEATHER OPERATION

When the engine is being used in temperatures below 32° F (0° C), check the following items closely:

1. Use the correct grade and weight of oil for the temperature conditions. Change the oil only when the engine is warm. If an unexpected temperature drop occurs when the engine is filled with summer oil, move to a warm location until the oil will flow freely before starting the engine.
2. Use fresh fuel. Fill the fuel tank after each days use to protect against moisture condensation.
3. Keep battery in a well-charged condition.

MAINTENANCE

Oil Level: Check oil level at least every eight hours of operation. Check more frequently on a new or overhauled engine as oil consumption is higher until piston rings seat properly.

Oil Change: Change crankcase oil after the first 25 hours of operation; change every 50 hours after that. If operating in extremely dusty conditions, change oil more frequently.

Oil Filter (If Used): Replace oil filter every 100 hours; replace more often in dusty conditions. Tighten the filter finger-tight plus one quarter to one half turn. Be sure to replace rubber ring around filter.

Crankcase Breather: This engine uses a crankcase breather valve for maintaining crankcase vacuum. No maintenance is generally required. If the crankcase becomes pressurized as evidenced by oil leaks at the seals, clean the crankcase breather cap and valve assembly, and the breather tube baffle in suitable solvent. To remove breather cap and valve assembly, remove the breather hose clamp and breather tube clamp.

Moistened Foam Air Cleaner: This air cleaner consists of a synthetic sponge over a metal retainer. The base and cover are similar to those of the dry paper kind. Wash the sponge periodically, moisten in oil and squeeze dry.

Cooling System: Check and clean cooling fins at least every 50 hours. Remove any dust, dirt or oil which may have accumulated.

CAUTION Plugged or clogged cooling fins can cause overheating and engine damage.

Spark Plugs: Check, clean and reset spark plugs every 100 operating hours. Replace spark plugs that show signs of fouling or electrode erosion. Replace plugs every 250 operating hours.

Breaker Points: Check, clean and reset breaker points every 200 operating hours. Replace points if they are pitted or burned. See *ADJUSTMENT* section.

CLICK HERE TO **DOWNLOAD** THE COMPLETE MANUAL

- Thank you very much for reading the preview of the manual.
- You can download the complete manual from: www.heydownloads.com by clicking the link below



- Please note: If there is no response to CLICKING the link, please download this PDF first and then click on it.

CLICK HERE TO **DOWNLOAD** THE COMPLETE MANUAL