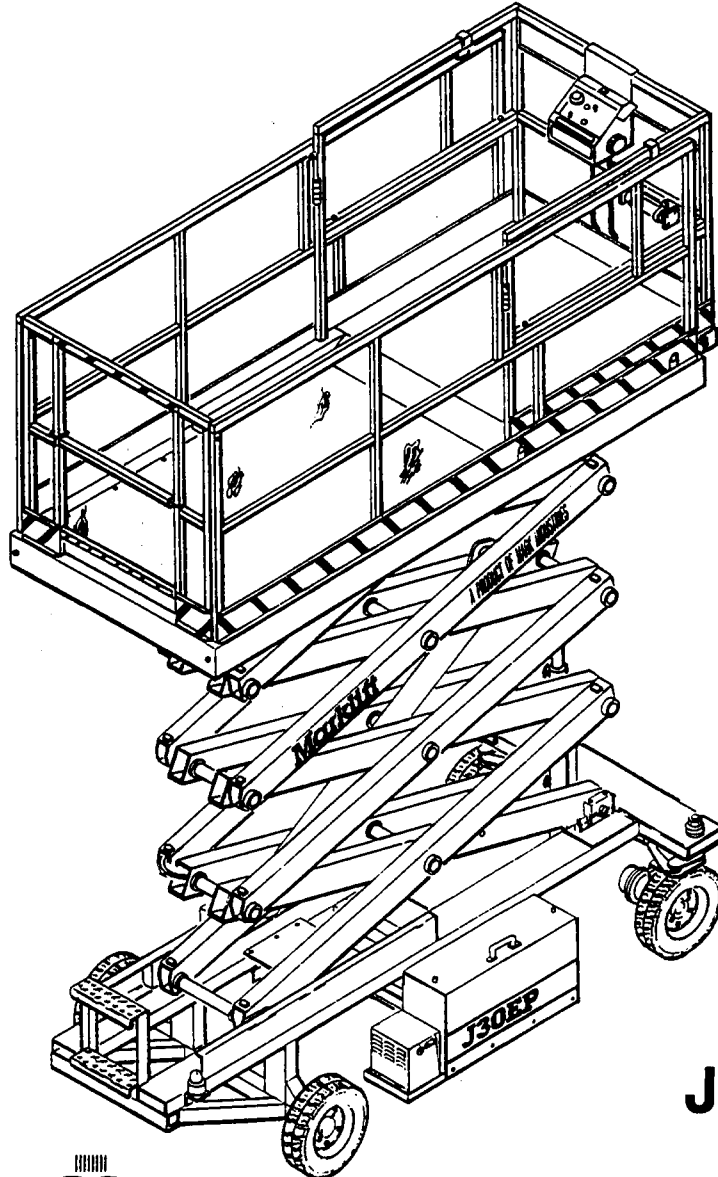


The Marklifts.®

A Product of Mark Industries

SELF-PROPELLED SCISSOR OPERATION MAINTENANCE AND PARTS MANUAL



J30EP



Mark Industries

106 12th Street S.E.
Waverly, Iowa 50677-9466
TEL. (319) 352-3920, FAX (319) 352-5727

17224

CLICK HERE TO **DOWNLOAD** THE COMPLETE MANUAL

- Thank you very much for reading the preview of the manual.
- You can download the complete manual from: www.heydownloads.com by clicking the link below



- Please note: If there is no response to CLICKING the link, please download this PDF first and then click on it.

CLICK HERE TO **DOWNLOAD** THE COMPLETE MANUAL



TITLE 8 DIVISION OF INDUSTRIAL SAFETY 358.38.113 (Register 73, No. 30—7-28-73)

Article 86. Provisions for Preventing Accidents

Article 86. Provision for Preventing Accidents Due to Proximity to Overhead Lines

2946. Provisions for Preventing Accidents Due to Proximity to Overhead Lines.

(a) General. No person, firm, or corporation, or agent of same, shall require or permit any employee to perform any function in proximity to energized high-voltage lines; to enter upon any land, building, or other premises and thereto engage in any excavation, demolition, construction, repair, or other operation; or to erect, install, operate, or store in or upon such premises any tools, machinery, equipment, materials, or structures (including scaffolding, house moving, well drilling, pile driving, or hoisting equipment) unless and until danger from accidental contact with said high-voltage lines has been effectively guarded against.

(b) Clearances or Safeguards Required. Except where electrical distribution and transmission lines have been de-energized and visibly grounded or effective barriers have been erected to prevent physical and arcing contacts with the high-voltage lines, the following provisions shall be met:

(1) Over Lines. The operation, erection, or handling of tools, machinery, apparatus, supplies, or materials, or any part thereof, over energized high-voltage lines shall be prohibited.

(2) Equipment and Materials in Use. The operation, erection, or handling of tools, machinery, equipment, apparatus, materials, or supplies, or any part thereof within the minimum clearances from energized lines set forth in Table X shall be prohibited.

Table X: Required Clearances from Overhead High-Voltage Lines. Columns: Nominal Voltage (Phase to Phase), Minimum Required Clearance (Feet). Rows: 750 - 50,000 (10), over 50,000 - 75,000 (11), over 75,000 - 125,000 (13), over 125,000 - 175,000 (15), over 175,000 - 250,000 (17), over 250,000 - 370,000 (21), over 370,000 - 550,000 (27), over 550,000 - 1,000,000 (42).

(3) TRANSPORTATION OR TRANSIT. The transportation or transit of any tool, machinery, equipment, or apparatus, or the moving of any house or other building in proximity to overhead high-voltage lines shall be expressly prohibited if at any time during such transportation or transit such tool, machinery, equipment, apparatus, or building, or any part thereof, can come closer to high-voltage lines than the minimum clearances set forth in Table Y.



MARK INDUSTRIES recommends that the following items be checked periodically as stated below. Any machine not in safe operating condition must be removed from service until it is repaired by a qualified service person.

DAILY

1. Make sure that operation and safety decals are in place and easy to read.
2. Check hydraulic tank level, add oil as required.
3. Check the water level in the batteries
4. Check for loose or missing hardware, wire connections, etc., repair or replace as required.
5. Inspect the controls for proper operation.
6. Check for and correct any hydraulic leaks.
7. Check for and correct any cracked welds or other structural damage.

WEEKLY

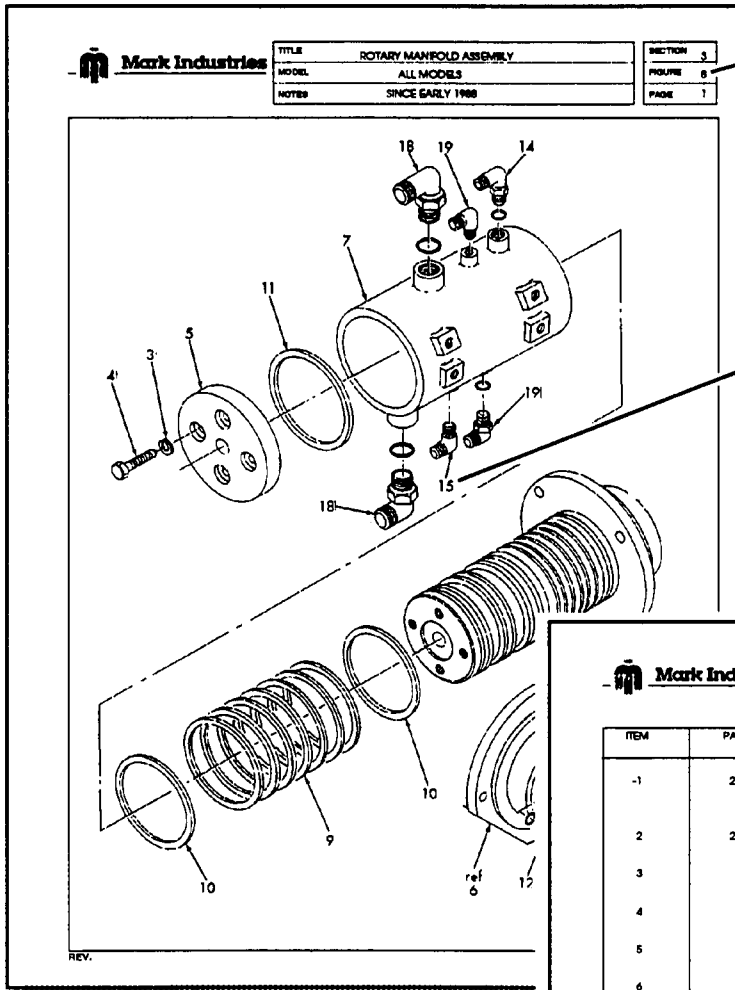
Perform all daily maintenance items.

1. Check the condition of the tires. Make sure they are free of serious cuts or defects.
2. Test instability alarm system (slope sensor/mercury switches).
3. Check for proper brake operation.
4. Record optional hour meter reading.
5. Clean unit by removing all dirt, oil, and grease. The machine may be washed with soap and water. (Keep clear of the electrical panels and charging units.)
6. Check for good overall performance.
7. Check for wear on electrical cables and hydraulic hoses.



MODEL: J30EP

PART NO.	QTY.	DESCRIPTION
600338	1	Decal Set
133501	1	Electrical Schematic
133502	1	Hydraulic Schematic
130927	2	Plastic Container
65842	4	Anti-Roll Cap
160137	4 ft	Warning Tape
70619	1	Limit Switch
133696	2	Kick Cylinder Wear Pad
70612	1	Mini Strobe (Amber)
4106	1	Drive Switch
65753	1	Fluted Knob
20481	1	Toggle Switch
31080	1	Emergency Knob
70615	1	Pilot Indicator Light
70333	1	Buzzer
70611	1	Emergency On/Off Switch
70610	1	Ignition Key Switch
16260	1	Toggle Switch
20562	1	Circuit Breaker
4014	2	Mercury Switch
70362	1	Relay
70590	1	Time Delay Relay
16947	6	Return Filter Canister
70479	4	Diode
90127-24	1	Solenoid Valve
81176	2	Seal Kit (Pump/Motor)
66731	2	Diode Assembly
66747	1	Ammeter
67975	1	Timer Kit
66750	1	Capacitor
66727	1	Fuse Assembly
600356	2	Seal Kit (Lift Cylinder)(TH)



ITEM	PART NUMBER	DESCRIPTION	UNITS PER ASSEMBLY
-1	21696	ROTARY MANIFOLD ASSEMBLY (See Sect. 2, Fig. 1 for NHA)	REF
2	24132	.. ROTARY MANIFOLD (1H) (See Section 2, Figure 1A for Details)	1
3		.. LOCK WASHER	4
4		.. CAPSCREW	4
5		.. SPOOL RETAINER	1
6		.. SWIVEL SPOOL ASSEMBLY	1
7		.. HOUSING	1
8	67817	.. SEAL KIT	1
9		... GLYD RING	7
10		... D.C. GLYD RING	2
11		... WEAR RING	1
12	80004-03	.. MALE CONNECTOR	2
13	80001-03	.. MALE CONNECTOR	1
14	80005-08	.. MALE ELBOW	1
15	80006-03	.. MALE ELBOW	1
16	80001-06	.. MALE CONNECTOR	1
17	80004-18	.. MALE CONNECTOR	2
18	80012-18	.. MALE ELBOW	2
19	80012-03	.. MALE ELBOW	2

CLICK HERE TO **DOWNLOAD** THE COMPLETE MANUAL

- Thank you very much for reading the preview of the manual.
- You can download the complete manual from: www.heydownloads.com by clicking the link below



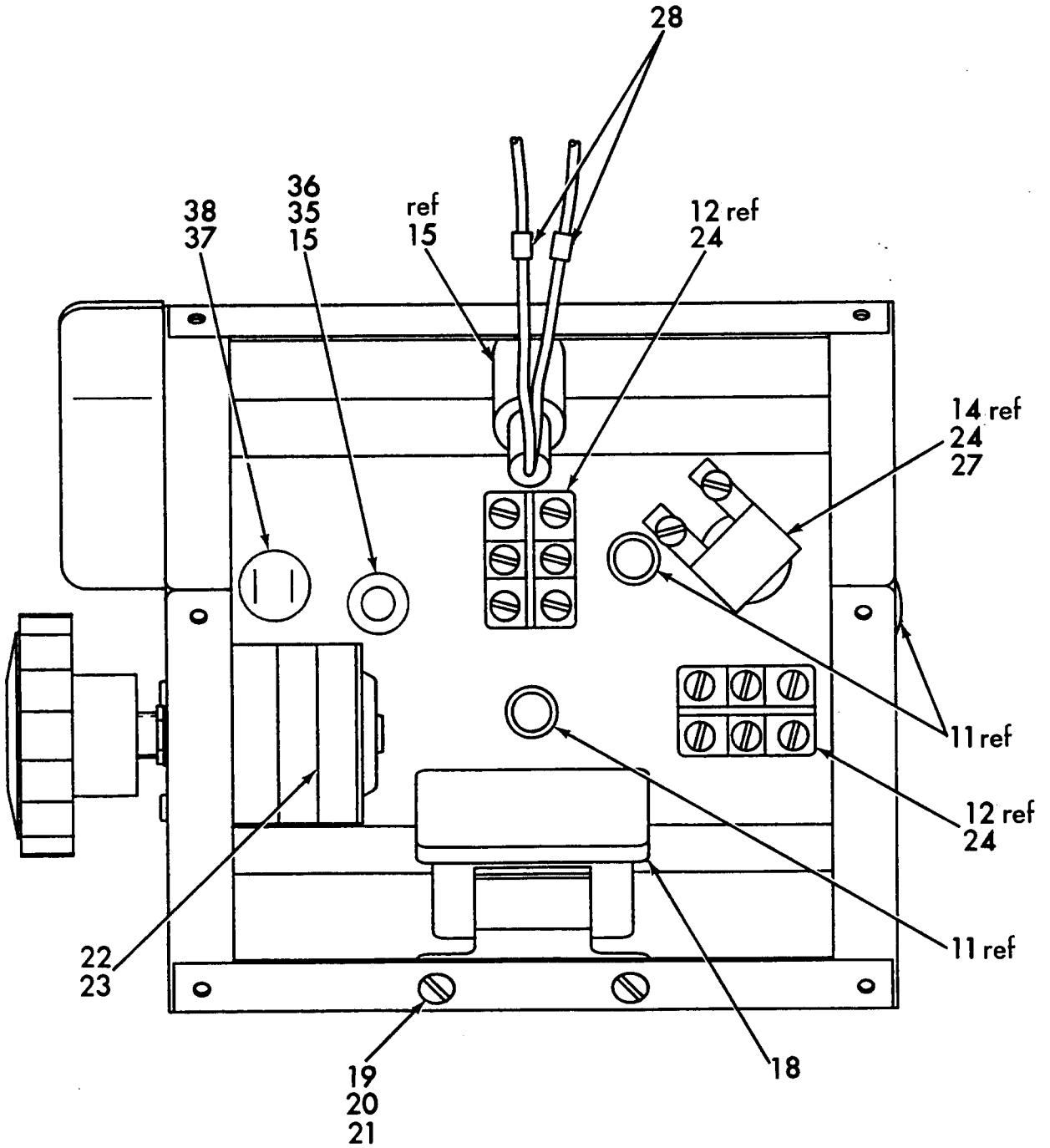
- Please note: If there is no response to CLICKING the link, please download this PDF first and then click on it.

CLICK HERE TO **DOWNLOAD** THE COMPLETE MANUAL



TITLE	UPPER CONTROL BOX ASSEMBLY
MODEL	J30EP
NOTES	

SECTION	2
FIGURE	2
PAGE	2

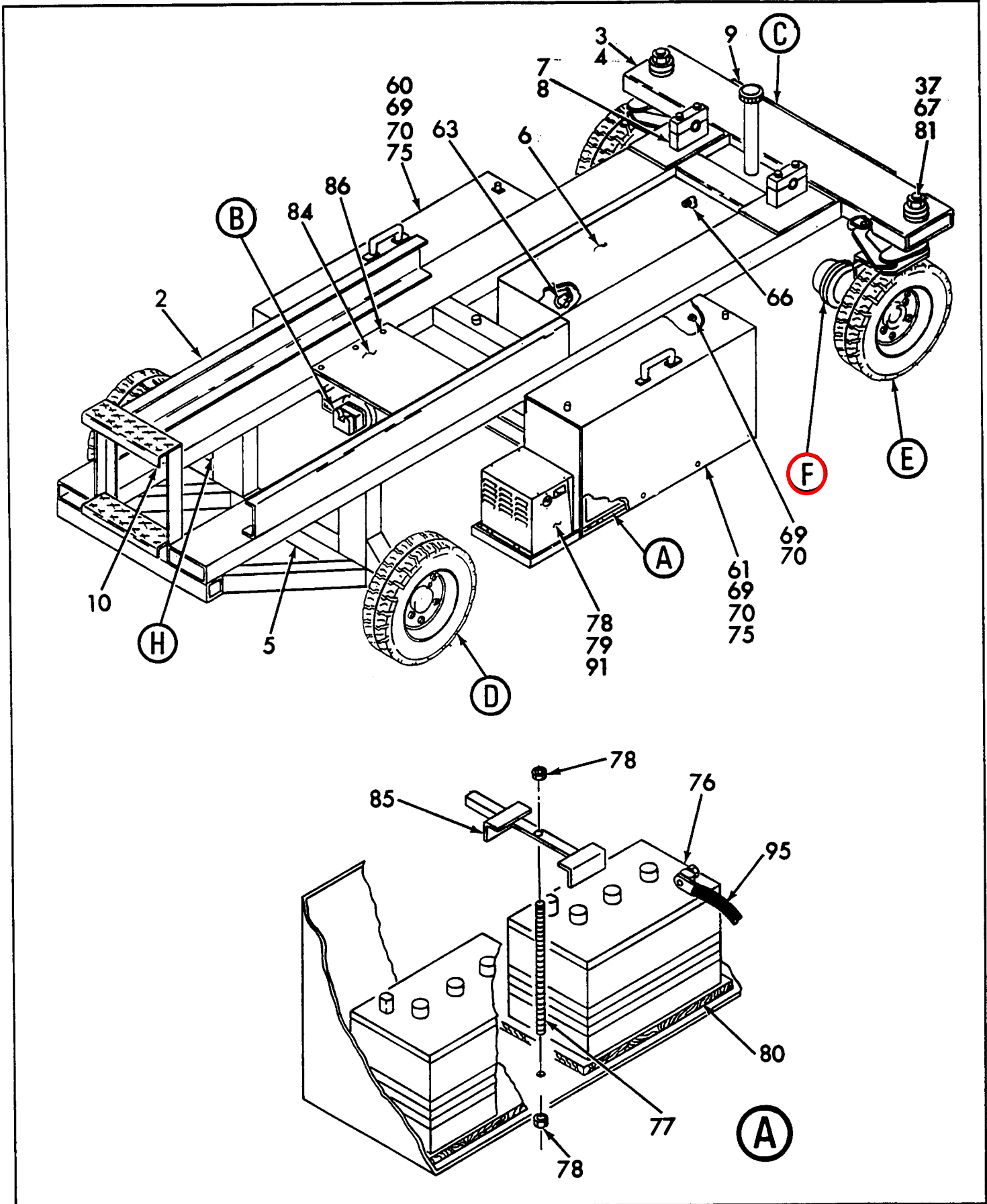




Mark Industries

TITLE	FRAME ASSEMBLY
MODEL	J30EP
NOTES	

SECTION	3
FIGURE	1
PAGE	1



REV.

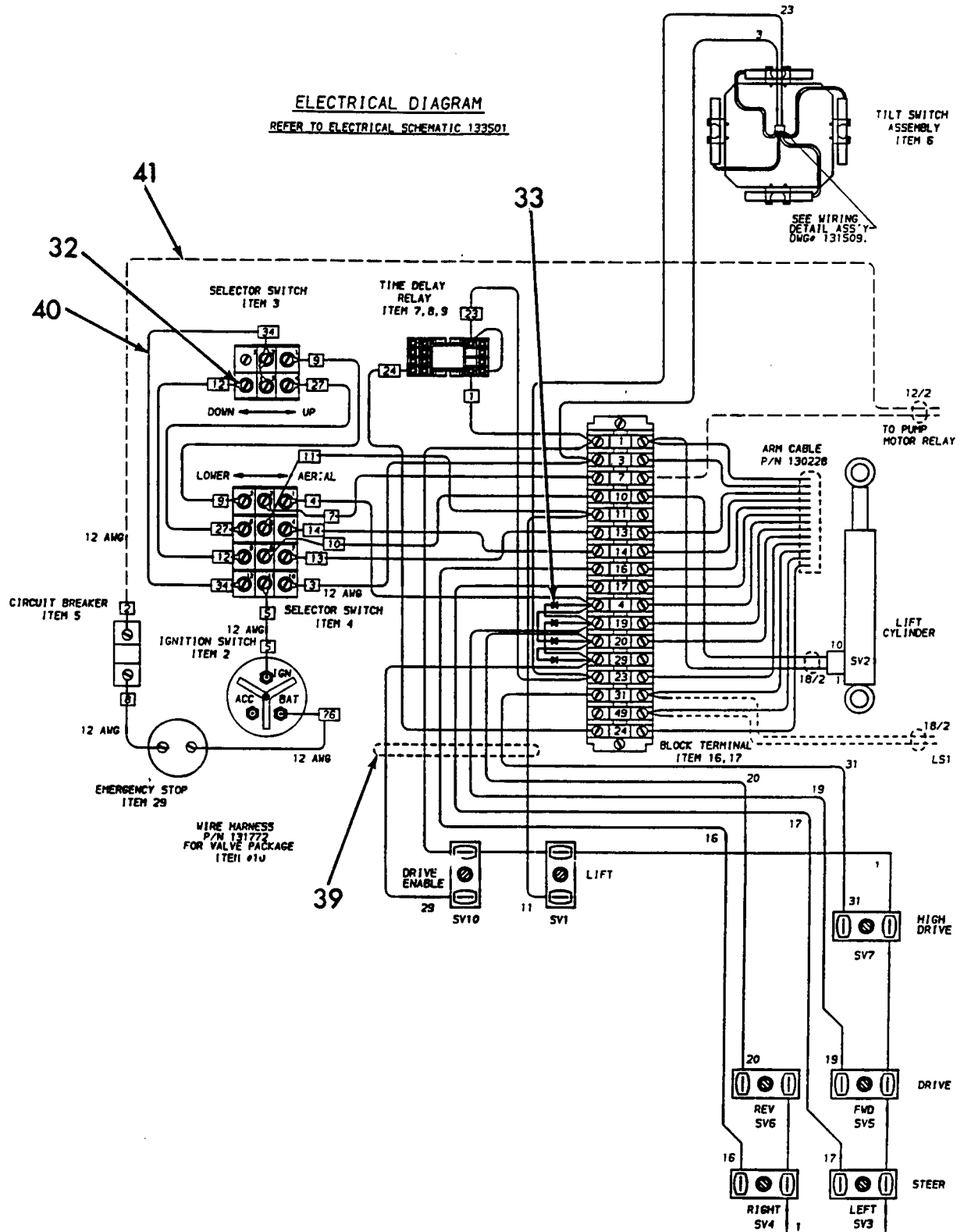


TITLE	CONTROL BOX ASSEMBLY
MODEL	J30EP
NOTES	

SECTION	3
FIGURE	2
PAGE	2

ELECTRICAL DIAGRAM

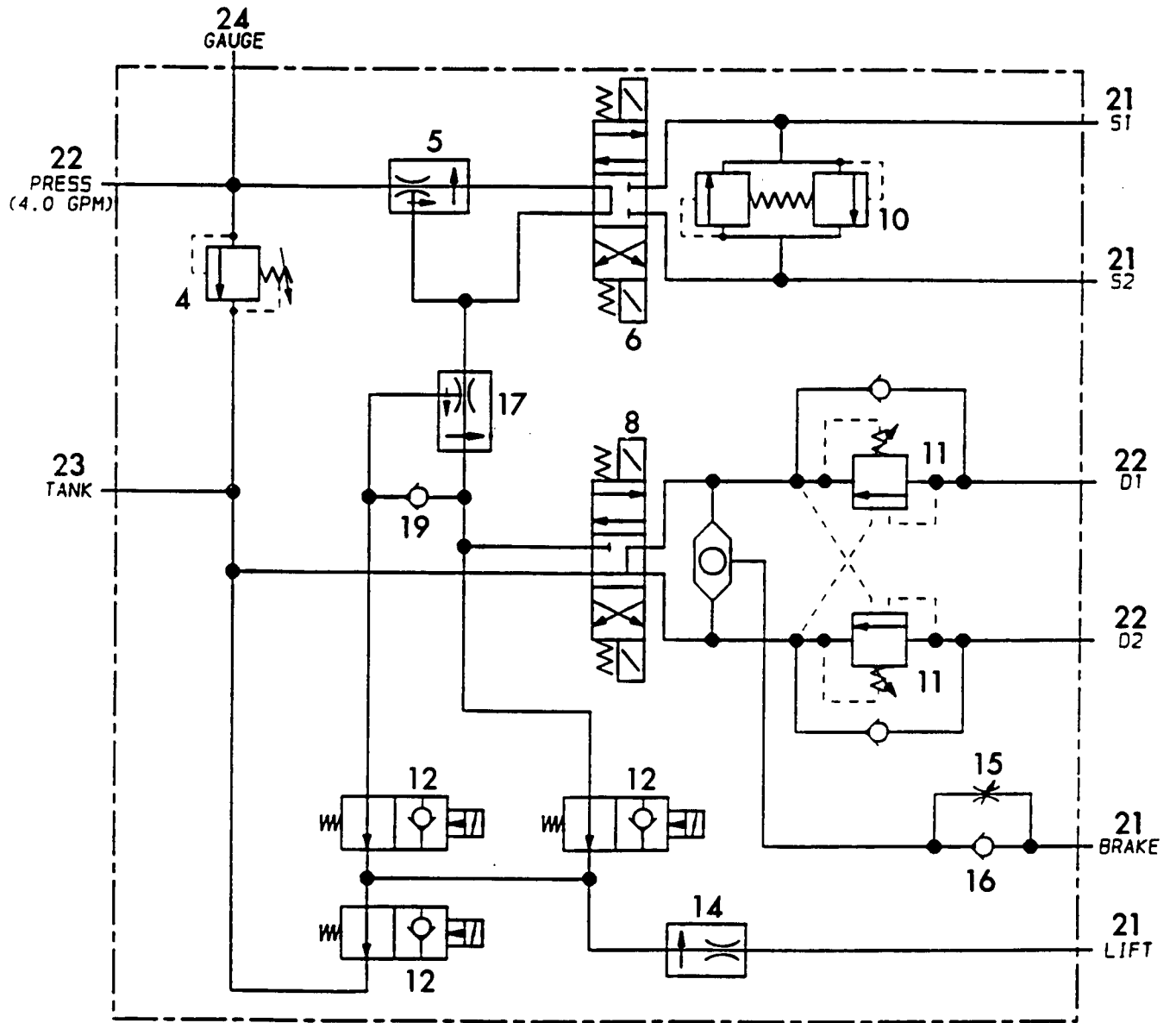
REFER TO ELECTRICAL SCHEMATIC 133501





TITLE	VALVE PACKAGE ASSEMBLY
MODEL	J30EP
NOTES	

SECTION	3
FIGURE	6
PAGE	3





Mark Industries

TITLE	LIFT CYLINDER ASSEMBLY
MODEL	J30EP
NOTES	CONCURRENT USE

SECT.	4
FIG.	2A
PAGE	2

ITEM	PART NUMBER 1234	DESCRIPTION	UNITS PER ASSY
-1	133596	ASSEMBLY, LIFT CYLINDER (See Sect. 4, Fig. 1 for NHA)	REF
2	.133500	CYLINDER, LIFT (GB) NOTE 2: INTERNAL SERVICE REPLACEMENT PARTS AVAILABLE ON A SPECIAL ORDER BASIS.	1
-3	..600367	KIT, SEAL (GB) NOTE 3: THE SEAL KIT INCLUDES ITEMS SHOWN WITH AN ASTERISK (*).	1
4	..600368	BUSHING	4
5	.81387	VALVE, SOLENOID	1
6	.80004-03	CONNECTOR, STRAIGHT THREAD	1
7	.80012-08	ELBOW, STRAIGHT THREAD	1
8	.60329	SCREW, CAP	3
9	.63302	WASHER, LOCK	3
10	.63402	WASHER, FLAT	3

REV.

DASH (-) INDICATES THE 'ITEM' IS NOT ILLUSTRATED



Mark Industries

TITLE	VENDOR CHAPTER
MODEL	J30EP

VENDOR CHAPTER CONTAINS:

<u>SECTION</u>	<u>TITLE</u>	<u>PART NO.</u>
1	DRIVE MOTOR	81380
2	BRAKE	81155
3	BATTERY CHARGER	70525

CLICK HERE TO **DOWNLOAD** THE COMPLETE MANUAL

- Thank you very much for reading the preview of the manual.
- You can download the complete manual from: www.heydownloads.com by clicking the link below



- Please note: If there is no response to CLICKING the link, please download this PDF first and then click on it.

CLICK HERE TO **DOWNLOAD** THE COMPLETE MANUAL