



**4t-7t Internal Combustion
Counterbalanced Forklift Trucks**

Operation and Maintenance Manual

Part Number 76500009

CLICK HERE TO **DOWNLOAD** THE COMPLETE MANUAL

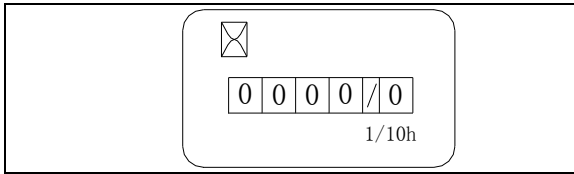
- Thank you very much for reading the preview of the manual.
- You can download the complete manual from: www.heydownloads.com by clicking the link below



- Please note: If there is no response to CLICKING the link, please download this PDF first and then click on it.

CLICK HERE TO **DOWNLOAD** THE COMPLETE MANUAL

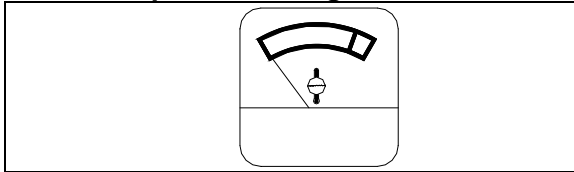
Hour Meter



When the key switch is in the | (ON) position, the hour meter begins operating.

The hour meter reading displays the cumulative, actual operating hours of the forklift.

Coolant Temperature Gauge

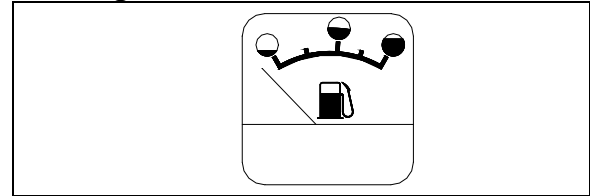


This gauge indicates the engine coolant temperature. Under normal conditions, the indicator is in green zone.

Caution:

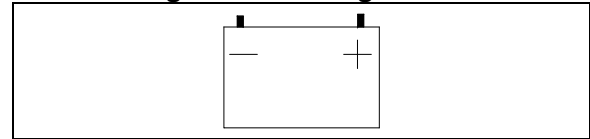
If the indicator is in the red zone, stop the truck immediately. Decrease engine speed to allow the engine to cool. Check engine coolant level and contact an authorized service technician.

Fuel Gauge



The gauge indicates the fuel level in the tank when the key is in the | (ON) position.

Electric Charge Indicator Light



This light displays the charge status of the battery. It lights up when the start switch position is | (On). This light should go out if the engine starts.

Caution:

If the light continues to stay lit or comes on during operation, the charging rate is low and should be checked immediately by an authorized service technician.

Brake Pedal [10]

Depress the brake pedal to slow the forklift; the forklift will stop. Release pressure on the brake pedal; the forklift will move.



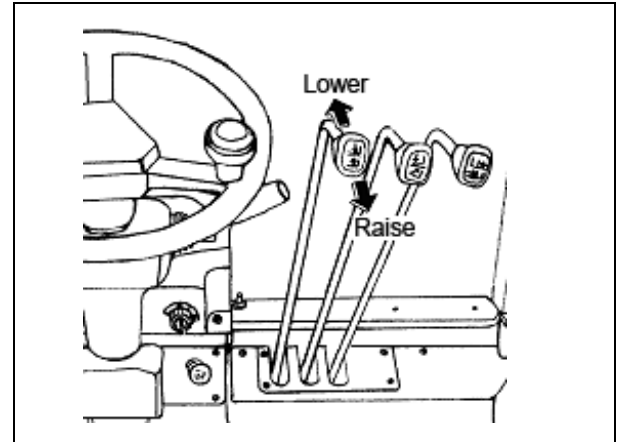
Caution:

Avoid sudden braking which can lead to forklift instability or falling cargo.

Accelerator [11]

Depress the accelerator: engine speed increases; the forklift operating speed increases. Release the accelerator: engine speed decreases, and forklift operating speed declines.

Lift/Lower Control Lever [12]



For lifting or lowering the forks.

Push Forward–Lower; Pull Back–Lift

The lifting speed is controlled by the amount the lever is moved and by the accelerator position. To reduce speed, move the lever to the neutral position.

Headlights and Front Combination Lights

Two headlights and front combination lights (turn signals, clearance lights) are installed on the front support of the overhead guard. Take care to not damage the lights. If they become dusty, wipe them clean, and replace them if they become damaged.

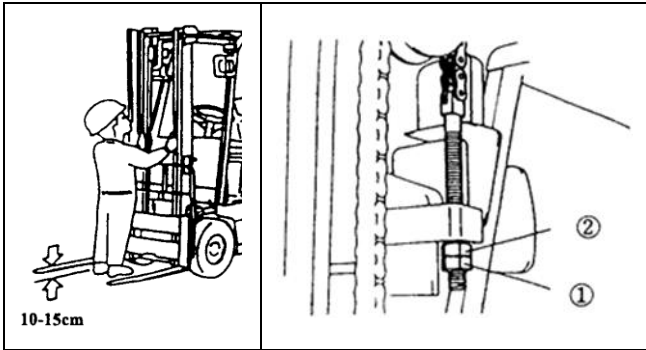
Rear Combination Lights

The rear combination lights include turn signals, tail lights, brake lights, and backup lights. Take care to protect the lights. If they become dusty, wipe them clean, and replace them if they become damaged.

46. The forklift operator warning label has warnings and methods of operation. When operating, follow all requirements in this handbook and the operator warning label.

Routinely check and replace damaged or missing labels.

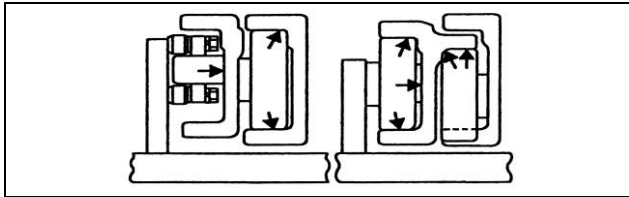
47. Users can purchase various types of attachments, such as rotating clamps, flat bale clamps, side-shifting carriages, forks, and push-pullers. They are for specialized use only. Modifications to attachments are NOT allowed. DO NOT attempt to modify attachments. Contact an authorized dealer for attachment installation or service



10-15cm

6. Mast Lubrication

Periodically lubricate the following components in accordance with the requirements of the Periodic Maintenance and Lubrication Chart.



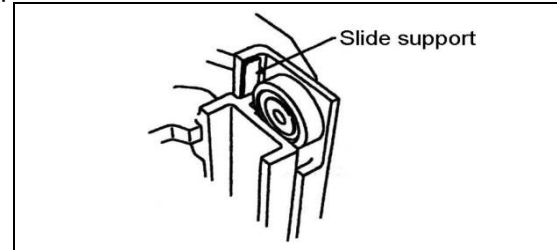
Mast

Apply a layer of lubricating grease onto the mast channels.

Note:

a) The period between lubrications should be changed as appropriate depending on work conditions.

During busy months, increase the frequency of component lubrication.



b) In support of forklift truck operations, apply a layer of lubricating grease on the lift pulleys and on the contact surfaces of the inner and outer masts.

Caution:

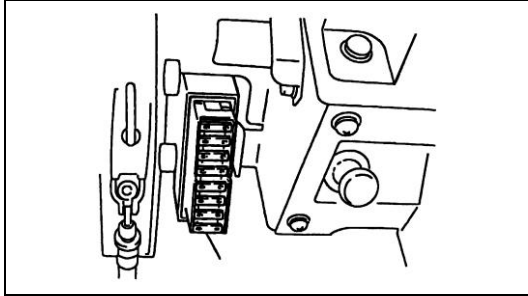
Before applying lubrication; stop the truck on a level surface, turn engine off, engage the parking brake, and lower forks to the ground. Avoid injury to hand or body, and avoid falling off from high place.

6. Other

1. Fuses

The fuse box is mounted in the middle of instrument panel to the left of the steering wheel. Investigate the cause before replacing any blown fuse.

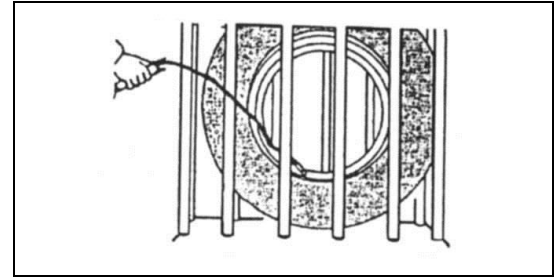
Replace with fuses of the prescribed specification.



2. Tire Replacement

Warning:

When using an air compressor, first adjust the air pressure of the compressor. Failure to do so may result in serious injury or death. To ensure safety, put the tire in a defend casing while inflating. Failure to do so may result in serious injury or death.



Front Wheels

- 1) Start the engine; raise the mast 100 mm high.
- 2) Place wheel chocks behind the rear wheels to prevent the forklift truck from moving.
- 3) Turn each wheel nut one or two counterclockwise turns.
- 4) Tilt the mast back. Place wood blocks on both sides of the outer mast.
- 5) Tilt the mast forward until the front wheels have lifted off the ground.

Caution:

Do not loosen nuts before the front wheels leave the ground.

CLICK HERE TO **DOWNLOAD** THE COMPLETE MANUAL

- Thank you very much for reading the preview of the manual.
- You can download the complete manual from: www.heydownloads.com by clicking the link below



- Please note: If there is no response to CLICKING the link, please download this PDF first and then click on it.

CLICK HERE TO **DOWNLOAD** THE COMPLETE MANUAL

VI. Operation



WARNING:

If the forklift truck has any damage or malfunction, **DO NOT** use until it is repaired.

1. Starting

Starting A Diesel Engine

- ① Put the directional control lever into neutral. Push on the service brake pedal.
- ② Rotate the start switch to the “START” position to start. After it has started, return the key to the “ON” position.



Caution:

If the forklift does not start within 5 seconds, turn the key to the “OFF” position. After 2 minutes, attempt to start again.

If three consecutive attempts to start fail, then contact an authorized technician to repair the lift truck.



Caution:

In cold temperatures, warm engine by turning the ignition key to “START”. Release key, wait 1 minute to start engine, turn the key 5 seconds until engine starts.

Starting A Gasoline Engine

- ① Put the directional control lever into neutral.
- ② Warm engine
. Press halfway down on the gas pedal and hold it. Turn the key switch to the “START” position to start. After it starts, release the key.



Caution:

When starting a warm engine, **DO NOT** depress the gas pedal all the way down. Doing this will actually make starting more difficult. Depressing it several times will also make starting difficult.



Caution:

A single starting time should not exceed 5 seconds. Allow at least 2 minutes for each start attempt.

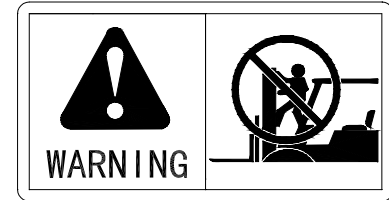
Item	Service Required	Interval			
		1 months (166hrs)	3 months (500hrs)	6 months (1000hrs)	1 year (2000hrs)
LPG Engine	1. Check fuel hose and hose fittings for leakage (1)	<input type="radio"/>	<input type="radio"/>	<input type="radio"/>	<input type="radio"/>
	2. Clean tar & other materials from pressure-reducing regulator	<input type="radio"/>	<input type="radio"/>	<input type="radio"/>	<input type="radio"/>
	3. Are fuel hose and/or hose fittings damaged?	<input type="radio"/>	<input type="radio"/>	<input type="radio"/>	<input type="radio"/>
	4. Is the LPG Bracket for the LPG reservoir loose or broken?	<input type="radio"/>	<input type="radio"/>	<input type="radio"/>	<input type="radio"/>
	5. LPG filter		<input type="radio"/>	<input type="radio"/>	<input checked="" type="radio"/>

Please refer to the engine manual for the remaining engine maintenance sections.

Note: (1) Increase the frequency of maintenance in dusty or otherwise polluted environments.

1. Warning Label:

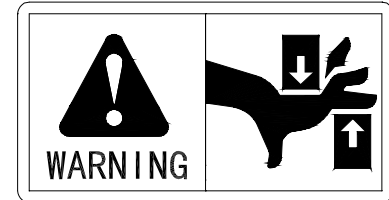
(DO NOT enter mast) warning: You may be seriously or fatally injured if your body is squeezed between the mast, the frame, and/or the overhead guard. If there is a need to inspect or maintain this part, DO NOT perform the inspection or maintenance until after the engine has been turned off and the mast and carriage appropriately secured. This forklift cannot carry passengers and must not be operated from outside the cab.



2. Mast Warning Label:

The inner and outer masts and fork carriage are vertically sliding parts. DO NOT put your hand or any other body part between the inner and outer masts. Failure to follow this warning may lead to serious bodily injury or death.

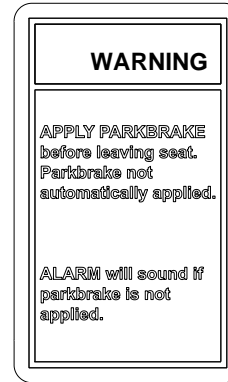
If there is a need to inspect or maintain this part, DO NOT perform the inspection or maintenance until after the engine has been turned off and the mast and carriage appropriately secured.



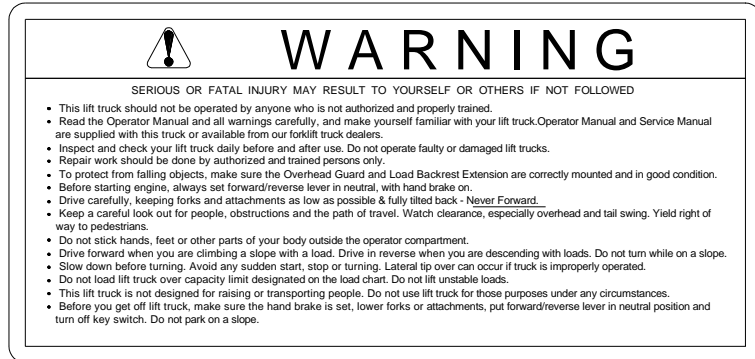
3. Mast Warning Label



26. Park Brake Warning Labels: (Operator Presence)



27. Operation Warning label:



Model	UT50P	UT60P	UT70P
Rated capacity (kg)	5000	6000	7000
Load center (mm)	600	600	600
Maximum lift height (mm)	3000	3000	3000
Free lift height (mm)	160	160	160
Maximum lift speed (mm/s)	440	440	415
Tilting angle (°)	6°/12°	6°/12°	6°/12°
Maximum travel speed (km/h)/(mph)	23/14	23/14	23/14
Ground Clearance (full Loaded) (mm)	170	170	170
Minimum turning radius (mm)	3160	3200	3280
Max gradeability (Fully Loaded) (%)	20	20	20
Wheelbase (mm)	2250	2250	2250
Wheel width (front/rear) (mm)	1489/1460	1489/1460	1489/1460
Service weight (kg)	8000	8400	9300
Overall dimensions (without forks) (L x W x H) (mm)	4660x1990x2500	4710x1990x2500	4790x1990x2500
Tires (front/rear)	8.25-15-14PR/4 8.25-15-14PR/2	8.25-15-14PR/4 8.25-15-14PR/2	8.25-15-14PR/4 8.25-15-14PR/2
Voltage/Capacity (V/Ah)	24/90/20	24/90/20	24/90/20
Diesel Engine	Model	Cummins QSB3.3-C99	
	Rated power/speed	74 kW/2200 r/min	
	Maximum torque/speed	415 N·m/1600 r/min	
	Displacement	3.3	

(1). Manual/Automatic	(2). Forward Gear	(3). Reverse Gear	(4). Seat Switch
(5). High and Low Speed Changeover Switch	(6). Parking Brake Switch	(7). Forklift Speed Sensor	(8). Mid-position Indicator
(9). Parking Brake Alarm Light	(10). Forward Solenoid Valve	(11). Reverse Solenoid Valve	(12). High- and Low-speed Solenoid Valve
(13). Starting Output	(14). Mast Lifting and Lowering Output	(15). Mast Forward and Backward Tilt Output	(16). Alarm Output
(17). Manual/Automatic Output	(18). Indication of Gear	(19). Key Switch Power Supply	(20). Battery Power Supply

11. Use precautions

- (1) When preparing to fill the cylinder with LPG, first open the shut-off valve. After you have finished filling, close the inlet shut-off valve.
- (2) When putting the tank on the forklift, the cylinder should be securely installed with the arrow on the end point up and both inlet and outlet shut-off valves closed. Connect the forklift truck input port to the cylinder outlet port. Tighten by turning. Open the outlet shut-off valve and DO NOT use until you have checked for leaks.
- (3) Promptly check for leaks after each filling with LPG, and when it is put on the truck for use.**
- (4) Be careful to protect the inlet filling port from dust. After LPG filling is complete, promptly twist on the dust cover to protect the seal of the filling port one-way valve.
- (5) The inlet relief pressure of the relief valve has already been set. Unauthorized changes to it are strictly forbidden.
- (6) If there is an abnormal situation, then have it serviced by an authorized technician. DO NOT attempt to adjust, dismantle, or repair on your own. In addition, store abnormal cylinders separately.
- (7) When the assembly is filled with LPG, either the volume method or the weight method may be used. If it is filled using the weight method, the cylinder needs to be placed standing upright. If the volume method is used, then lay the cylinder on its side, with the direction mark pointing up.
- (8) When filling, transporting, storing, using, and testing cylinders, strictly observe the stipulations of the NFPA.
- (9) The cylinder must be installed and removed gently. DO NOT let it collide with or be struck by other objects. Keep the cylinder assembled components in good condition. DO NOT detach, adjust, or replace components on your own.
- (10) The cylinder may be re-filled with HD-5 liquefied petroleum gas. The maximum filling volume is not to exceed 80% of cylinder liquid volume.
- (11) The cylinder must be filled at a filling station which has been issued a license for liquefied petroleum gas filling by a bureau of quality and technical supervision. DO NOT FILL ON YOUR OWN.
- (12) When a new cylinder or a re-tested cylinder is first put into use, the filling unit must vacuum the cylinder or subject it to nitrogen gas replacement treatment.

CLICK HERE TO **DOWNLOAD** THE COMPLETE MANUAL

- Thank you very much for reading the preview of the manual.
- You can download the complete manual from: www.heydownloads.com by clicking the link below



- Please note: If there is no response to CLICKING the link, please download this PDF first and then click on it.

CLICK HERE TO **DOWNLOAD** THE COMPLETE MANUAL