



Doosan Infracore

DSL 601 / DSL 801

Serial Number -----

Operation & Maintenance Manual

PB503000E02
September 1998

CLICK HERE TO **DOWNLOAD** THE COMPLETE MANUAL

- Thank you very much for reading the preview of the manual.
- You can download the complete manual from: www.heydownloads.com by clicking the link below



- Please note: If there is no response to CLICKING the link, please download this PDF first and then click on it.

CLICK HERE TO **DOWNLOAD** THE COMPLETE MANUAL

1.0 Owner/Operator Safety Overview

1.1 Safety Message for Owners and Operators

Your DAEWOO equipment has been designed with the safety of the persons who will operate and service it in mind. However, our care in designing this equipment does not guarantee that it will be used in a safe manner. Safe operating practice is where your responsibility and the responsible actions of all the persons who operate and maintain this equipment take over.

1.1.1 Owner/Employer Responsibility

Both the Occupational Safety and Health Act (OSHA) and the American National Standards Institute (ANSI) make you, the employer, responsible for providing formal training and a safe workplace environment for the use of this equipment. Your responsibility also includes establishing daily inspections and scheduled maintenance practices to ensure the equipment's ongoing safe operating condition.

The manual you are reading now is intended to help you meet your responsibilities. It identifies warning labels on the equipment and explains what they mean. It describes some of the general and specific hazards to be aware of when operating the equipment. It also offers some suggestions to be considered when establishing workplace rules and operator training programs.

As the owner/employer, you also have the responsibility to be certain that the equipment you have placed into service is capable of doing its intended job. This includes matching equipment design to working conditions, capacity to the size of loads it will be handling, and selecting suitable attachments and options. This section of the manual discusses these issues as well.

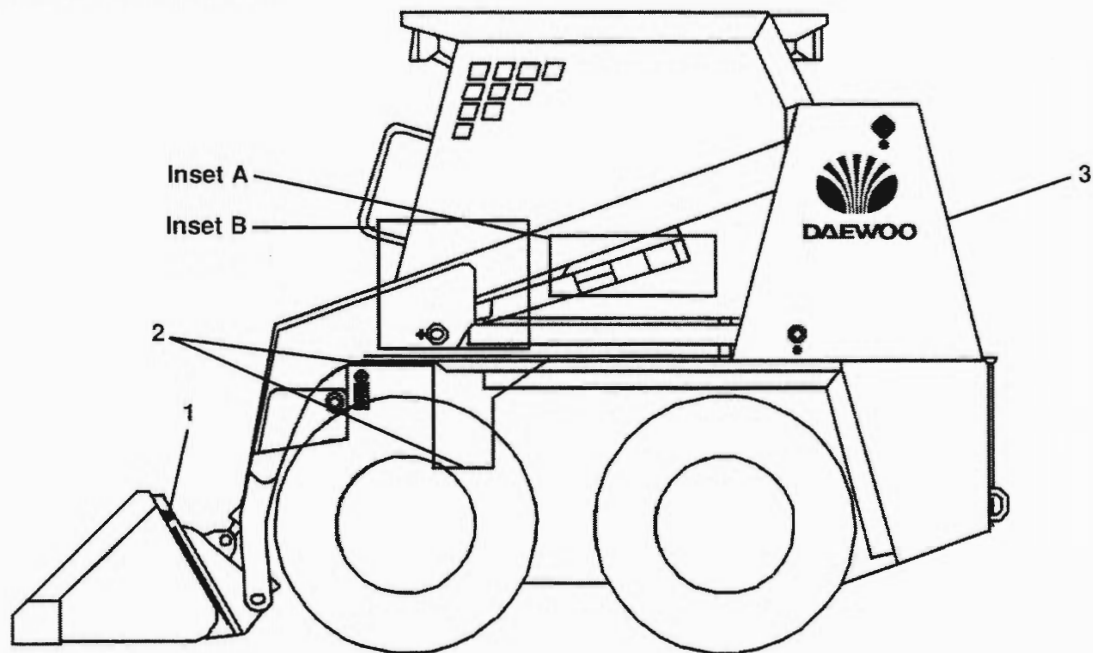
At the end of this overview, we list some of the specific OSHA, ANSI, and other published resources you can consult for ways to help you comply with safety requirements for the use of this equipment in your workplace.

2.3 Safety Warning Label Locations and Descriptions

2.3.1 Label Locations

▲ CAUTION

Always keep safety and information labels clean. If they are lost or damaged, attach them again or replace them with a new label. Safety labels are available in languages other than English. Please contact your dealer or DAEWOO if you need non-English labels.



2.5 Operating Safety

2.5.1 Work Site Safety

WARNING

SAFETY AT WORK SITE

- Before starting the engine, thoroughly check the area for any unusual conditions that could pose a hazard.
- Before starting the engine, examine the terrain and soil conditions of the work site. Determine the best and safest method of operation.
- If you need to operate on a street, protect pedestrians and cars by designating a person for work site traffic duty and/or by installing fences around the work site.
- Water lines, gas lines, and high-voltage electrical lines (or other objects) may be buried under the work site. Contact each utility and identify their locations. Be careful not to sever or cut any of these lines.
- DAEWOO does not recommend operation of loader in moving water. User should consult a supervisor or safety coordinator anytime water is encountered for any special operating procedures.



2.5.17 Precautions for Loading and Emptying the Bucket

WARNING

Load, unload and turn on flat level ground. Do not exceed machine rated operating load shown on the rated operating load name plate attached to your machine. Failure to obey warnings can cause the machine to tip or roll over and cause injury or death.

WARNING

Never dump over an obstruction that can enter the operator cab. The machine could tip forward and cause injury or death.

Blank Page

CLICK HERE TO **DOWNLOAD** THE COMPLETE MANUAL

- Thank you very much for reading the preview of the manual.
- You can download the complete manual from: www.heydownloads.com by clicking the link below



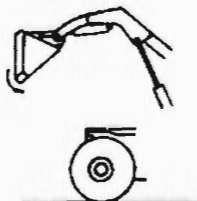
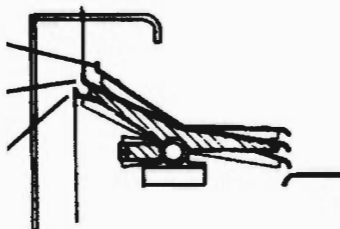
- Please note: If there is no response to CLICKING the link, please download this PDF first and then click on it.

CLICK HERE TO **DOWNLOAD** THE COMPLETE MANUAL

5.2.4 Bucket Pedal (④)

- This is the pedal to tilt the bucket forward or backward. The speed is controlled both for forward and backward tilting by the degree of the pedal pressing.

Backward
Tilting
Neutral
Forward
Tilting



Forward Tilting



Backward Tilting

5.2.5 Attachment Pedal (⑤)

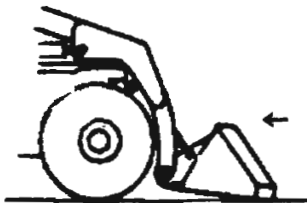
- This pedal is used to operate the auxiliary hydraulics (attachments) instead of the standard bucket.

▲ CAUTION

When using an attachment other than the standard bucket, follow the instructions for each separate attachment.

(4) Leveling the ground

Drive forward or backward with the bucket tilted and raised slightly off the ground to perform leveling.



▲ CAUTION

Do not drive forward with the boom in float position.

Also, leveling jobs can be performed by using the floating position for the boom according to operating conditions. Make the bucket parallel to the ground as much as possible.

7.3 DAILY PRE/POST START CHECKS

7.3.1 Pre-Start Checks

1. Check engine oil level. Refill if necessary
2. Check hydraulic oil level. Refill if necessary.
3. Check coolant level. Refill if necessary.
4. Check the engine fan/alternator belt.
5. Check the battery and battery cables.
6. Check the fuel system for leaks.
7. Check the hydraulic system.
8. Grease all fittings.
9. Inspect for any loose or missing nuts and bolts
10. Inspect structural members and welds for cracks or deformation.
11. Check the loader tires for proper inflation and unusual wear
12. Check the fuel level.
13. Check the condition and security of the operator seat belt and seat bar.

WARNING

If any of the following pre/post start checks indicate that service may be required, have such service performed before using the machine.

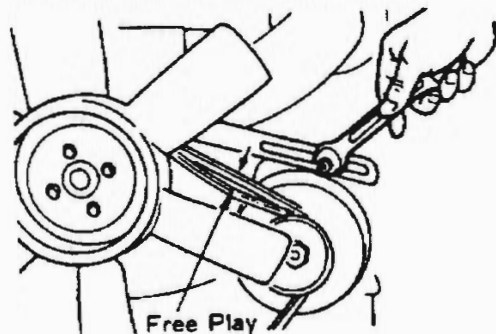
7.3.2 After Starting - Before Operation

1. Start the engine and observe the initial exhaust color at start and at normal operating temperatures. Excessively black, blue, or white exhaust is an indication of a problem. Listen for any abnormal sounds.
2. Check the operation of all exterior lights, instrument panel indicator lights and installed optional equipment.
3. Check the operation of all switches.
4. Check the operation of all controls.
 - a. Check loader for movement with controls in neutral. Should movement occur refer to service manual for proper adjustment procedure.
 - b. DSL 601 - Check for proper function of the motion interlock system. With the loader running, lift the seat-bar to the raised position. Move the control levers in either direction. The engine should shut off with less than 1 inch of lever movement in either direction. Adjust as necessary.
 - c. Check for proper operation of boom, bucket, and accessories (if attached).
 - d. Insure that the boom and bucket pedals are locked with the seat bar raised.

7.9 Fan Belt

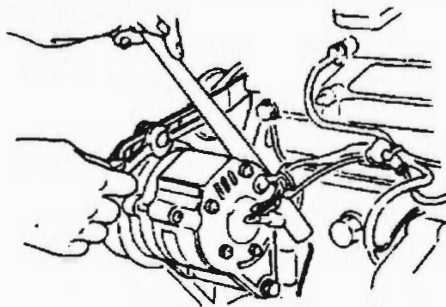
7.9.1 Belt Tension

Properly adjusted, the belt should have approximately 3/8" to 9/16" (10-15 mm) of free play when checked by pressing firmly on the belt between the fan and alternator pulleys.

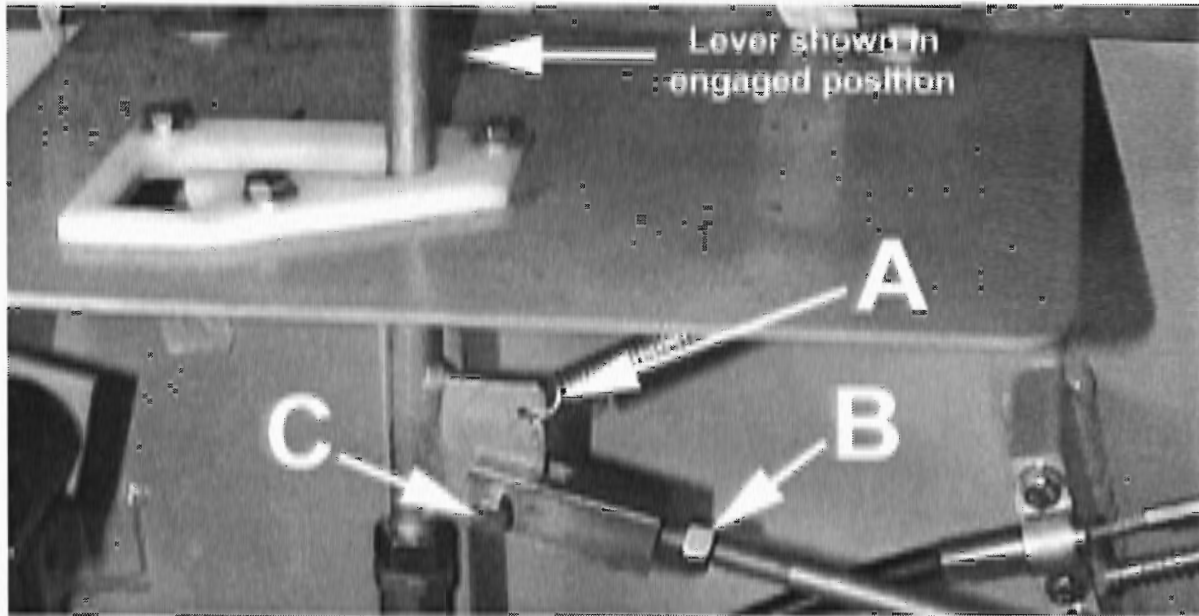


7.9.2 Adjustment

Belt tension can be adjusted by loosening the upper and lower pivot bolts on the alternator. Use a small pry bar to move the alternator to achieve proper tension and retighten pivot bolts.



7.17 Parking Brake Adjustment



Should adjustment be required begin by opening the cab and securing with safety latches. Locate the park brake handle linkage and return spring. Remove the spring (**A**) to release tension from the parking brake linkage. Loosen the jam nut (**B**), remove bolt (**C**), and rotate the clevis on the linkage to adjust the cable tension until parking brake engages fully and interlock functions properly. Re-attach clevis, re-tighten jam nut and re-connect spring when completed with the adjustment procedure. Inability to achieve proper adjustment using this procedure is indicative of more serious problem and should be referred to your DAEWOO dealer.

(Typical of DSL 601 Beginning with SN AA01312)

8.2.2 Power Unit

Item	Unit	Model	
		DSL 601	DSL 801
• Make	-	Yanmar	Yanmar
• Model	-	4TNE84	3TN100
• Type of Fuel	-	Diesel	Diesel
• Cooling Method	-	Water	Water
• No. of Cylinders	each	4	3
• Displacement	in ³ (cc)	121.7 (1995)	158.1 (2591)
• Bore Size	in(mm)	3.31 (84)	3.94 (100)
• Stroke	in(mm)	3.54 (90)	4.33 (110)
• Horsepower Net	hp(ps)/rpm	41.1 (41.7)/2800	51.7 (52.4)/2500
• High Idle	rpm	2975	2662
• Torque	ft.lb(kg.m)/rpm	≥89.0 (12.3) 1500-1700	≥127.3 (17.6) 1500-1700
• Torque Rise	%	≥19.0	≥16.8
• Lubrication	-	Full Flow	Full Flow

CLICK HERE TO **DOWNLOAD** THE COMPLETE MANUAL

- Thank you very much for reading the preview of the manual.
- You can download the complete manual from: www.heydownloads.com by clicking the link below



- Please note: If there is no response to CLICKING the link, please download this PDF first and then click on it.

CLICK HERE TO **DOWNLOAD** THE COMPLETE MANUAL