



# Technical Manual

CLICK HERE TO **DOWNLOAD** THE COMPLETE MANUAL

- Thank you very much for reading the preview of the manual.
- You can download the complete manual from: [www.heydownloads.com](http://www.heydownloads.com) by clicking the link below



- Please note: If there is no response to CLICKING the link, please download this PDF first and then click on it.

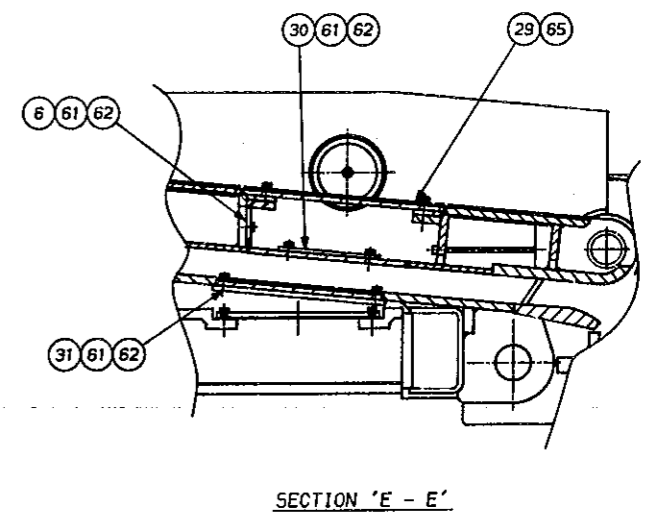
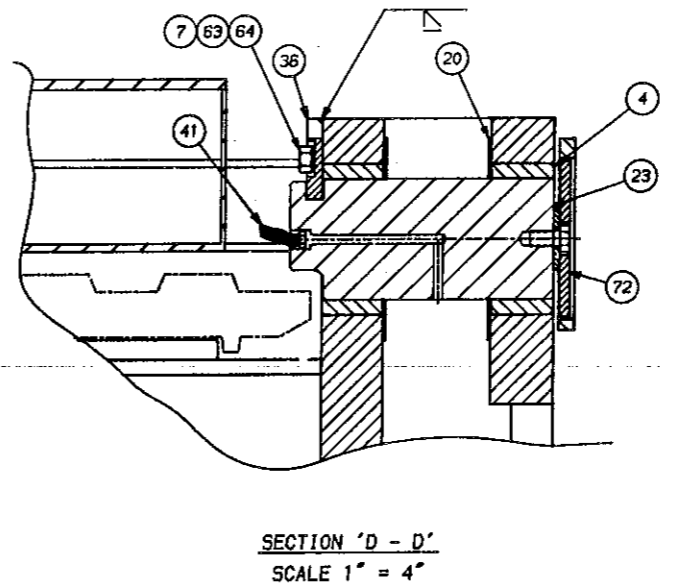
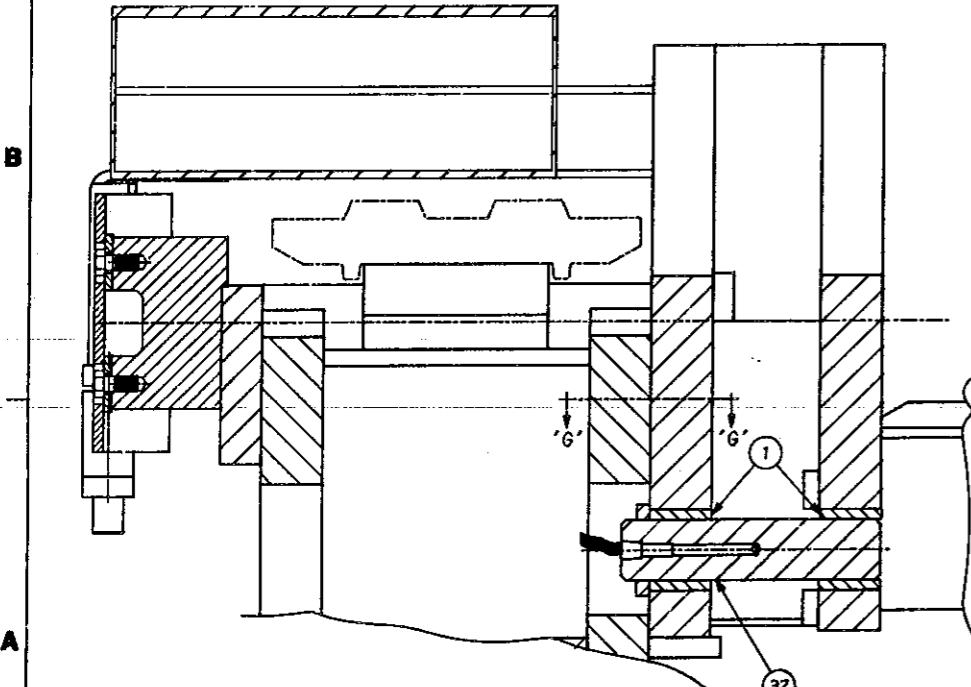
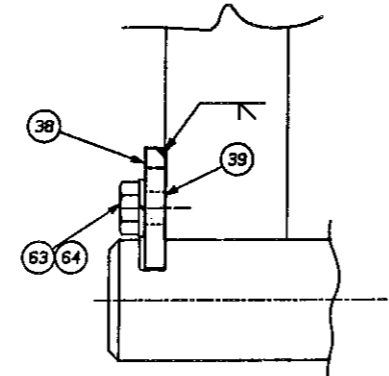
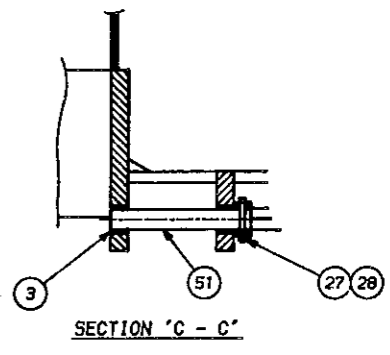
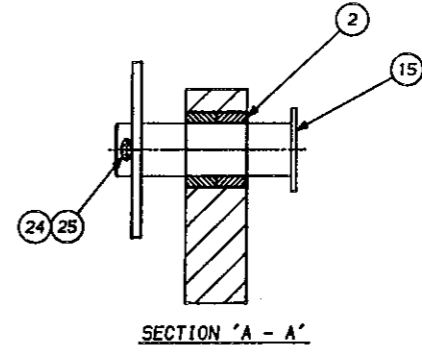
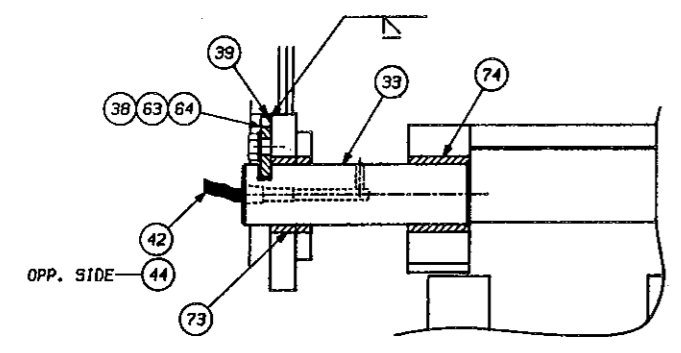
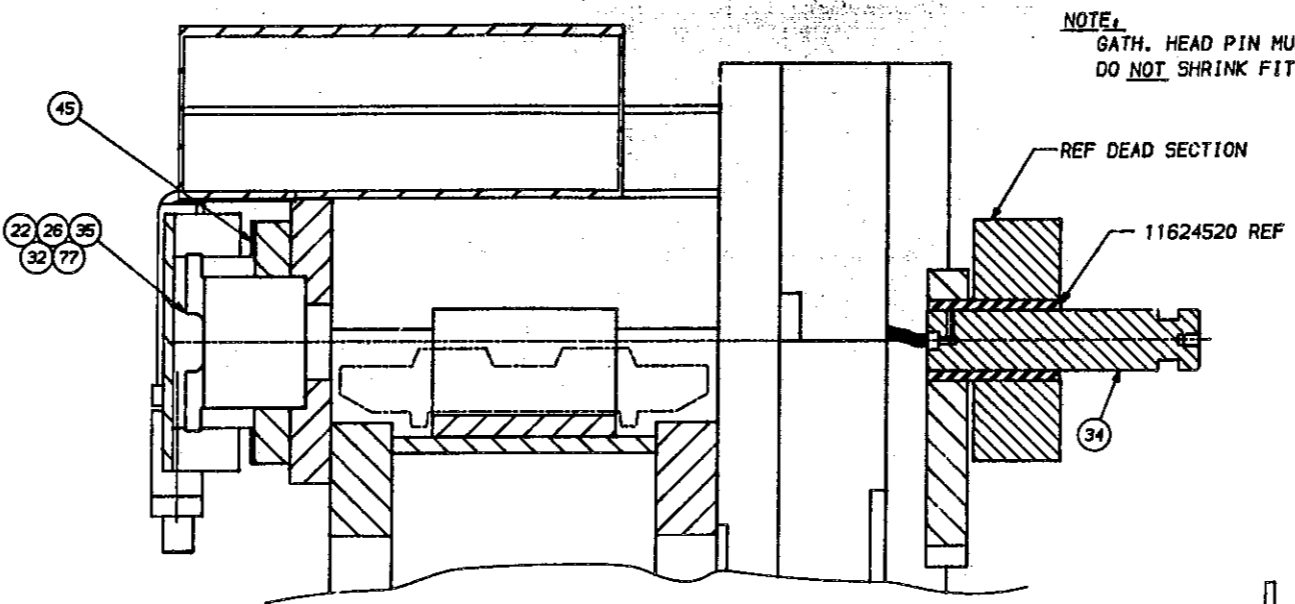
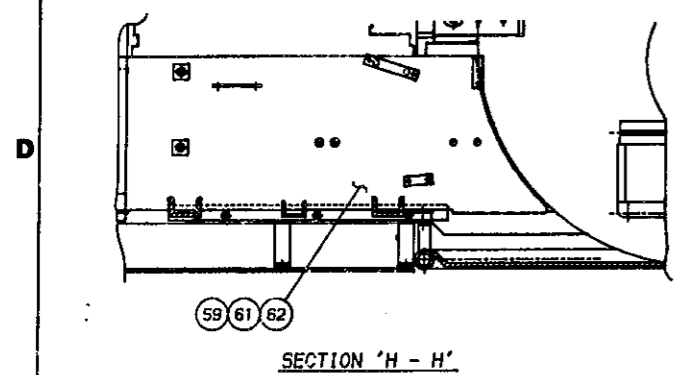
CLICK HERE TO **DOWNLOAD** THE COMPLETE MANUAL





ITEM NO.	PART NO.	QTY	U/M	DESCRIPTION	DMG. SIZE
79	60234002	1	EA	WELD BRKT. GAUGE & TRAM	X B
80	60233236	1	EA	DETAIL, COVER SUPPORT	. B
81	60233996	1	EA	MOUNTING ANGLE	. B
82	60233217	2	EA	DETAIL, MTG BAR	. B
83	60233215	1	EA	DETAIL, RUBBER FLAP	. A
84	60233218	1	EA	DETAIL, RETAINER	. A
85	60234007	1	EA	WELD. COVER SUPPORT	X B
86	60232349	1	EA	DETAIL, MTG BAR	. A
87	3706530	1	EA	DETAIL, MTG BOSS	. C
88	3706572	1	EA	DETAIL, MTG BOSS	. C
89	37701414	14	EA	1/2" FLAT WASHER	. .
90	37441375	12	EA	1 1/4"-7 x 3 3/4" HHCS	. .
				GRADE 8 TRAM CASE MTG	
91	60234039	4	EA	DET. MOUNTING STRAP	. A
92	60234042	2	EA	WELD. COVER MONITOR	X B
93	60234061	1	EA	DETAIL, RUBBER COVER	. C
94	60234068	1	EA	DETAIL, RUBBER FLAP	. B
95	30155410	2	EA	DET. MOUNTING POST	. A
96	60234085	1	EA	WELD. COVER OPER. PIT	X C
97	60234062	1	EA	DET. REINFORCEMENT PL.	. B
98	60234063	1	EA	DET. REINFORCEMENT PL.	. A

NOTE:  
GATH. HEAD PIN MUST BE PRESSED IN  
DO NOT SHRINK FIT



REV	ECN	BY	DATE	REV	ECN	BY	DATE
1		K591	LH	3-22-90			
2		K424	JR	3-22-90			

-NOTICE-  
TO ALL PERSONS RECEIVING THIS DRAWING  
This drawing contains confidential information  
and is issued in confidence on the condition  
that it be returned on demand and not be  
copied, reproduced, disclosed to others or  
used in the manufacture of the subject matter  
hereof without the consent of Eimco Coal  
Machinery Incorporated.

Drawn on CAD Copyright 1989

**EIMCO** Coal Machinery Incorporated  
A Tempella Tool-ook Company Fairmont WV 26554

DATE: 3-22-90  
SCALE: 3/8"  
DO NOT SCALE

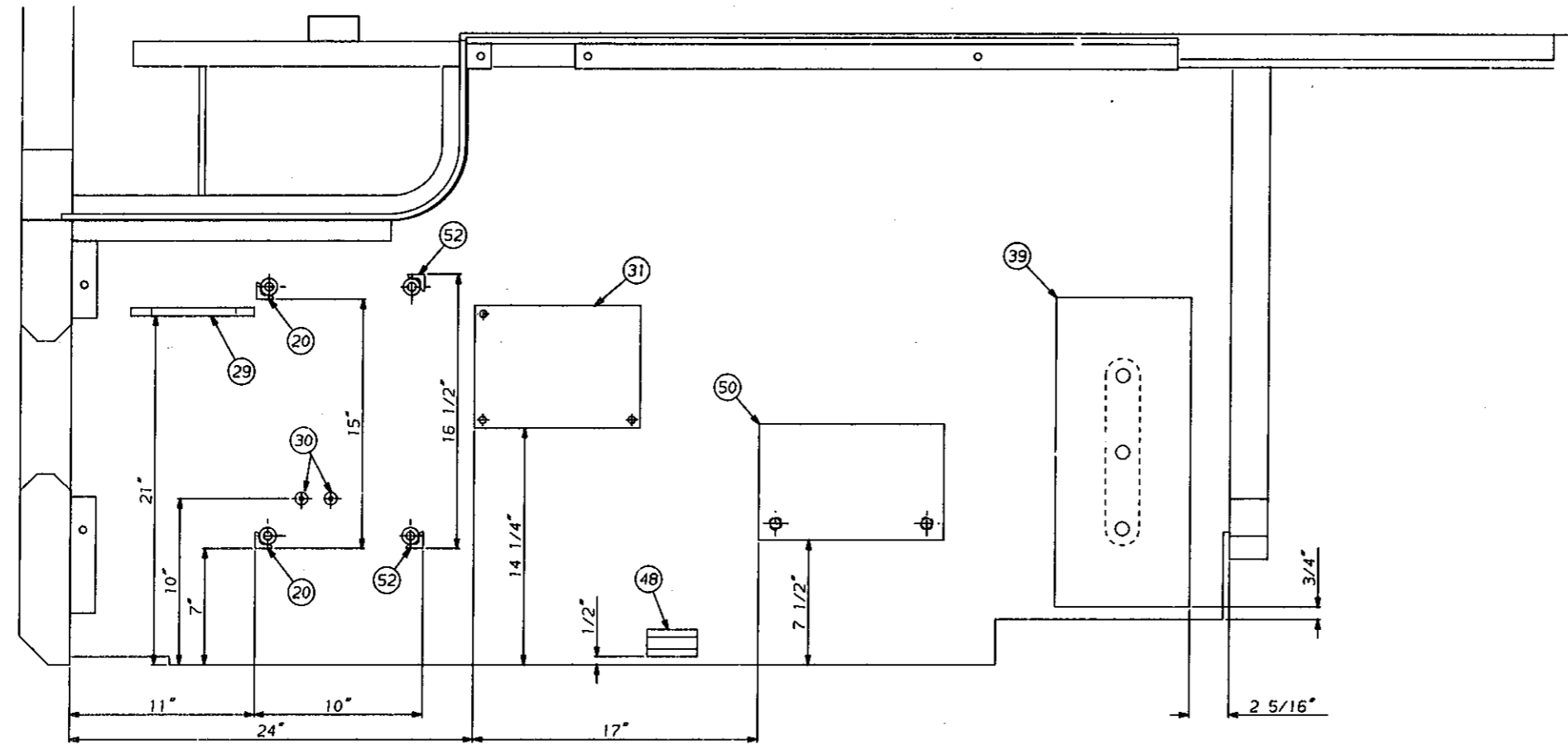
REV: JR  
CHKD: JR  
ENTR: JR

NEXT ASSY: 9" C. FIXED PIT SCREWDRIVER  
TITLE: TRACTOR FRAME RADIO ONLY  
Dwg No. / PART NO.: 60234003/SH.2  
SHEET 2 OF 2

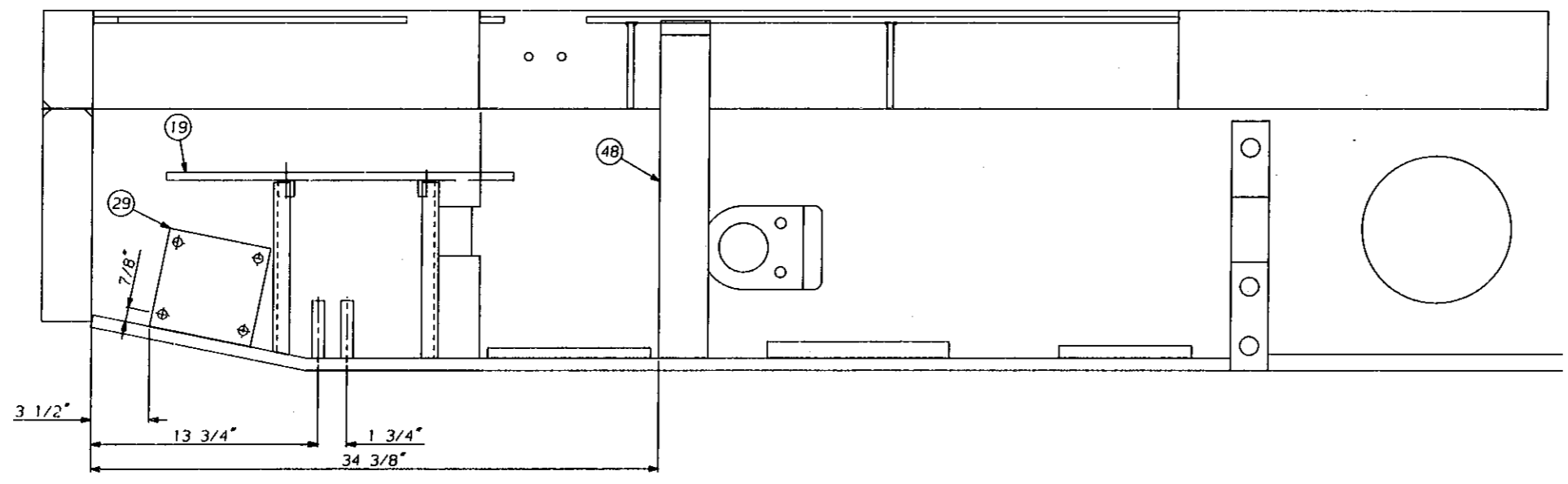
AUG 0 8 1990



BILL OF MATERIAL				B/M No. 60234418/SH.3	
ITEM NO.	PART NO.	QTY/U/M	DESCRIPTION	B/M	DRG SIZE



NOTE:  
LOCATE AND TACK BRACKETS IN  
PLACE AT THIRD FAB



SHEET 3 of 3

© L291 JRM-27-90 © L232 LH 9-10-90		© L291 JRM-27-90 © L232 LH 9-10-90		TO ALL PERSONS RECEIVING THIS DRAWING This drawing contains confidential information and is issued in confidence on the condition that it be returned on demand and not be copied, reproduced, disclosed to others or used in the manufacture of the subject matter thereof without the consent of Eimco Coal Machinery Incorporated.		Drawn on CAD Copyright 1990 <b>EIMCO</b> Coal Machinery Incorporated A Tempetto Tomoak Company Fairmont WV 26554		CHECKED BY: [ ] DATE: 8-1-90 DESIGNED BY: [ ] DATE: [ ] SCALE: 1/16" = 1"		NEXT ASSY: 60234421 TITLE: PIT INSTALLATION SECOND FAB DWG No./PART No.: 60234418/SH.3 DWG SIZE: D	
---------------------------------------	--	---------------------------------------	--	--	--	---	--	---	--	--	--

CLICK HERE TO **DOWNLOAD** THE COMPLETE MANUAL

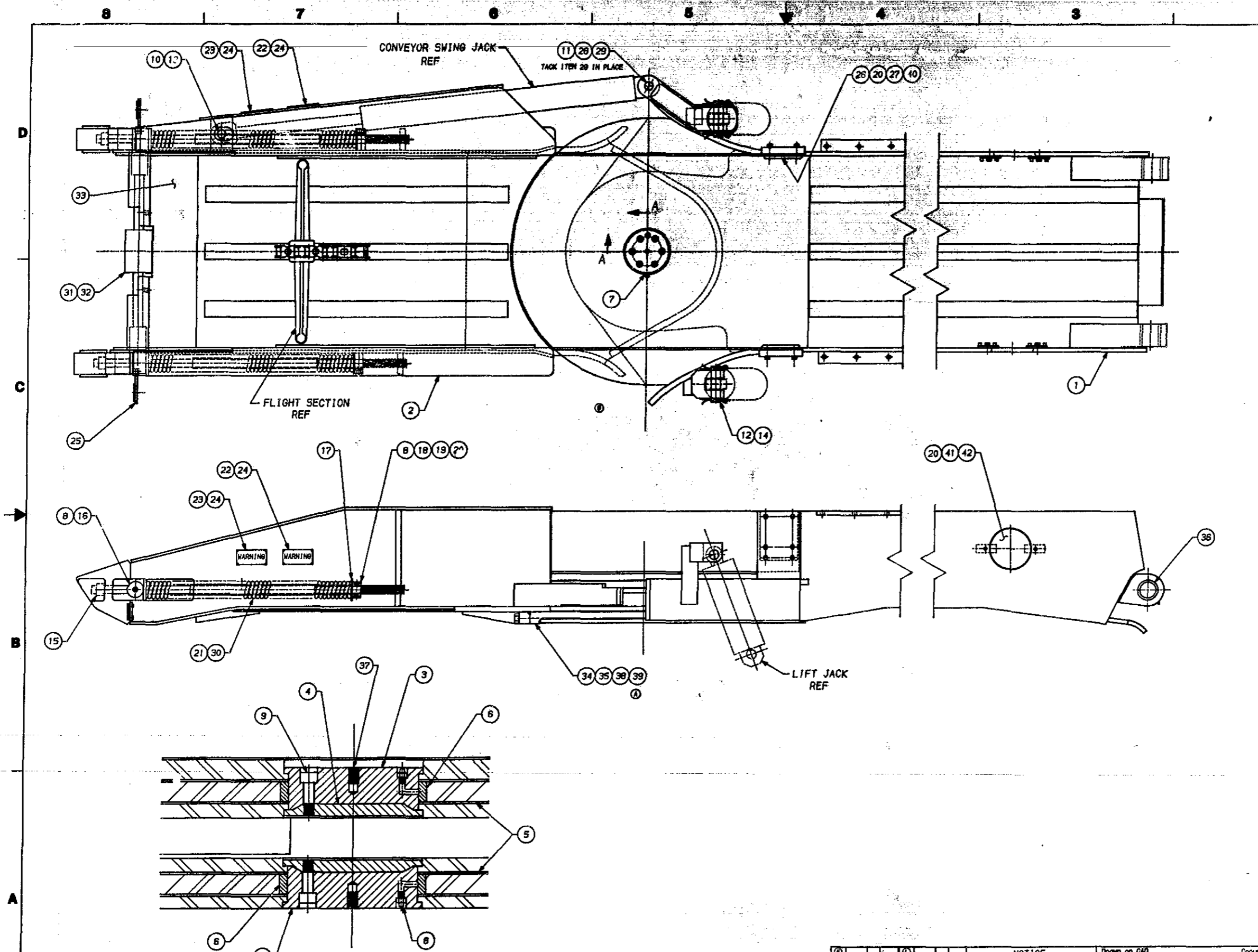
- Thank you very much for reading the preview of the manual.
- You can download the complete manual from: [www.heydownloads.com](http://www.heydownloads.com) by clicking the link below



- Please note: If there is no response to CLICKING the link, please download this PDF first and then click on it.

CLICK HERE TO **DOWNLOAD** THE COMPLETE MANUAL

BILL OF MATERIAL					D/W No. 60231477	
ITEM NO.	PART NO.	QTY	U/M	DESCRIPTION	DN	SIZE
1	60231476	1	EA	MACHINING, FAN SECTION	X	D
2	60231569	1	EA	MACHINING, TAIL SECTION	X	D
3	82602418	2	EA	PIN, CONVEYOR SWIVEL		B
4	60221108	2	EA	RETAINER, CONV SWIVEL		B
5	60152675	2	EA	RINGS, WEAR		A
6	60230572	2	EA	BUSHING, CONV SWIVEL		B
7	82912015	2	EA	PIN, DOWEL		
8	50087410	8	EA	1/8 GREASE FITTING		
9	37514312	12	EA	5/8"-11 HSHCS x 2" LG		
10	82600248	1	EA	PIN, CONV SWING JACK		A
11	82946009	1	EA	PIN, CONV SWING JACK		B
12	60114642	1	EA	PIN, CONV LIFT JACK		A
13	37206216	2	EA	3/8" DIA COTTER PIN x 2"		
14	37206315	4	EA	3/8" DIA COTTER PIN x 2 1/2"		
15	60205515	2	EA	ROD, TAKE-UP	X	B
16	82908237	2	EA	PIN		B
17	60205549	2	EA	SPRING GUIDE	X	B
18	60108701	2	EA	LOCKNUT		B
19	37421922	4	EA	1/2"-13 HHCS x 3" LG		
20	37707918	20	EA	1/2" L WASHER		
21	60210479	2	EA	SPRING, TAKE-UP		B
22	99024513	2	EA	CAUTION TAG		A
23	99024514	2	EA	DANGER TAG		A
24	37020013	16	EA	DRIVE SCREW		
25	60209434	2	EA	REFLECTOR ASSY	X	B
26	60231594	2	EA	SPRING BOARD		B
27	37544863	12	EA	1/2"-13 FSHCS x 3"		
28	37506102	1	EA	3/8"-16 SHCS x 3 1/4" LG		
29	37102415	1	EA	3/8"-16 HEX NUT		
30	60170305	2	EA	SPRING TAKE-UP		B
31	60022431	1	EA	TAIL ROLLER	X	B
32	37518416	2	EA	3/4"-10 SHCS x 2"		
33	60230520	1	EA	SLIDE PAN	X	C
34	60230559	2	EA	SHIM, LOWER PIVOT		B
35	60230253	1	EA	PIVOT, LOWER CONV		C
36	11624512	2	EA	BUSHING, PIVOT		B
37	37558376	2	EA	5/8"-11 SET SCREW x 7/8"		
38	37439023	7	EA	1"-8 HHCS x 4"		
39	37708815	7	EA	1" L WASHER		
40	60231607	2	EA	BAR, RETAINING		B
41	60231600	2	EA	COVER, BOOM PIN		B
42	37419017	4	EA	1/2"-13 HHCS x 1 1/4"		

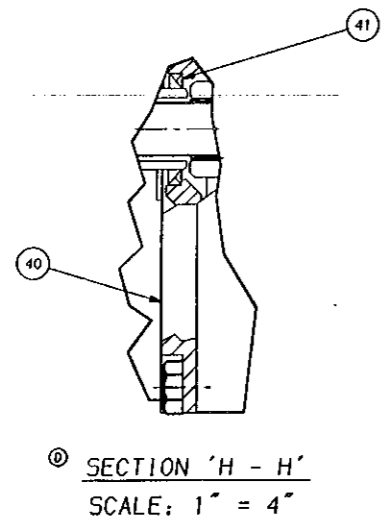
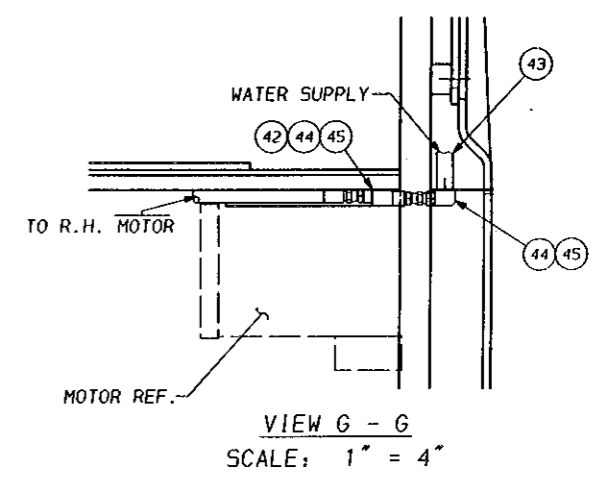
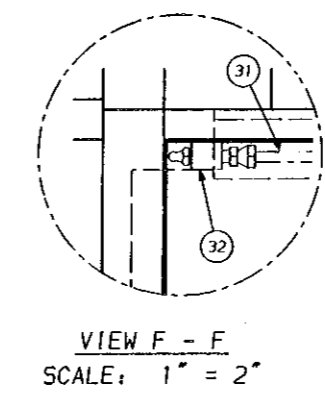
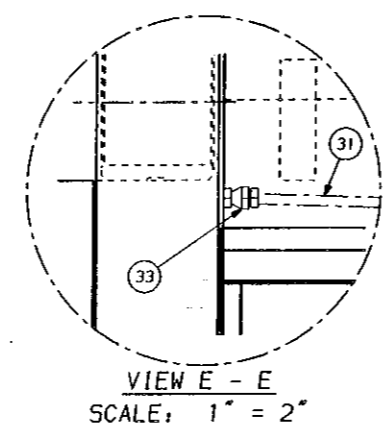
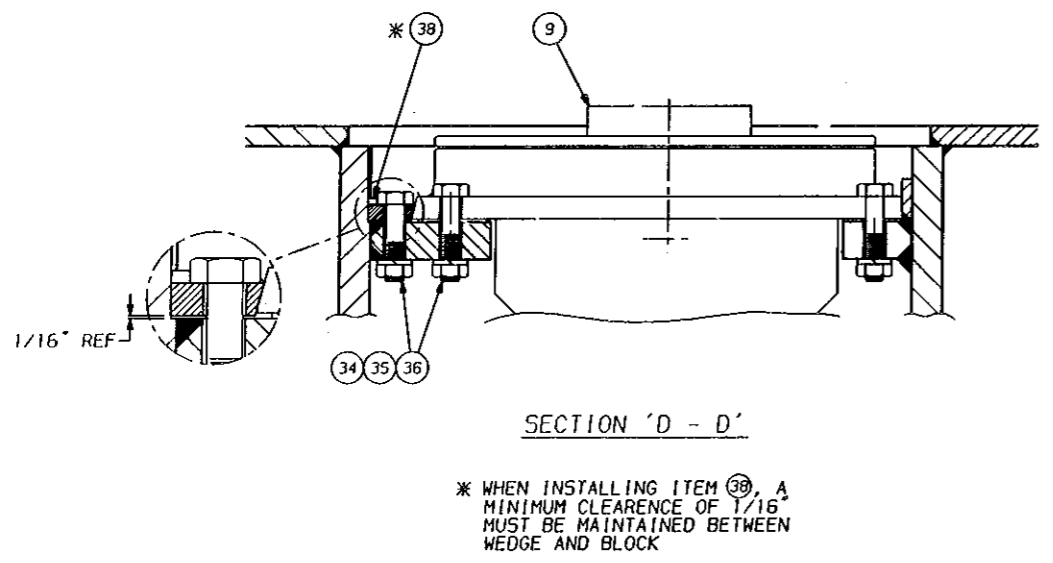
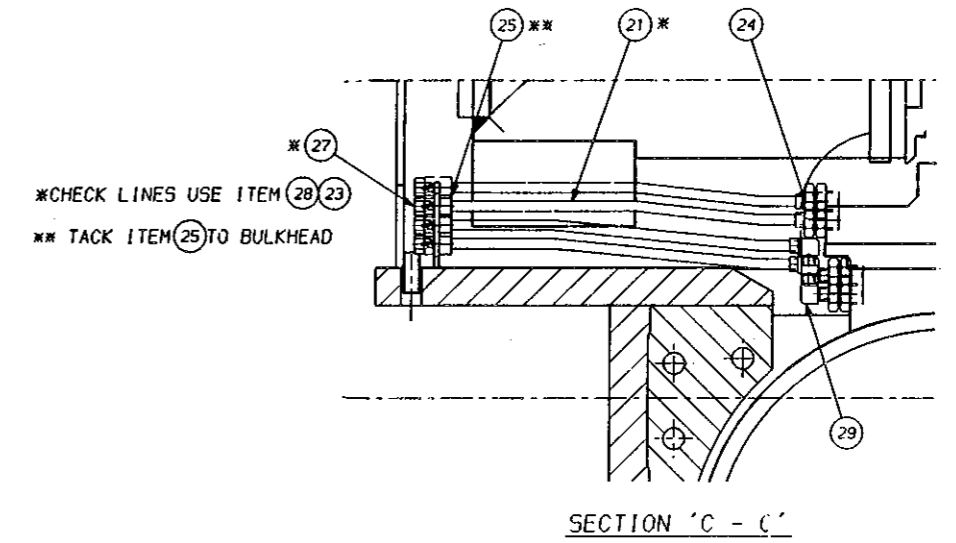
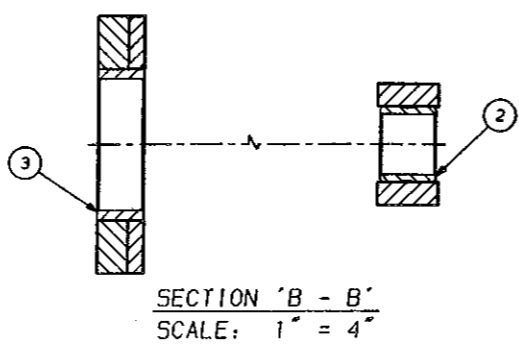
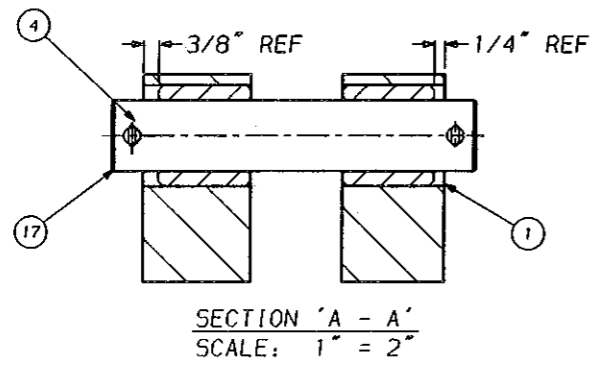


SECTION A-A  
SCALE: 1:2.667

AUG 08 1990

-NOTICE- TO ALL PERSONS RECEIVING THIS DRAWING This drawing contains confidential information and is loaned in confidence on the conditions that it be returned or destroyed and not be copied, reproduced, disclosed to others or used in the manufacture of the subject matter thereof without the consent of Eimco Coal Machinery Incorporated.		Drawn on CAD Copyright 1988 <b>EIMCO</b> Coal Machinery Incorporated A Tompkins Transfer Company Fairmont WV 26554	TITLE CONVEYOR ASSY DATE NO./REV. NO. 60231477 D
--	--	---	---

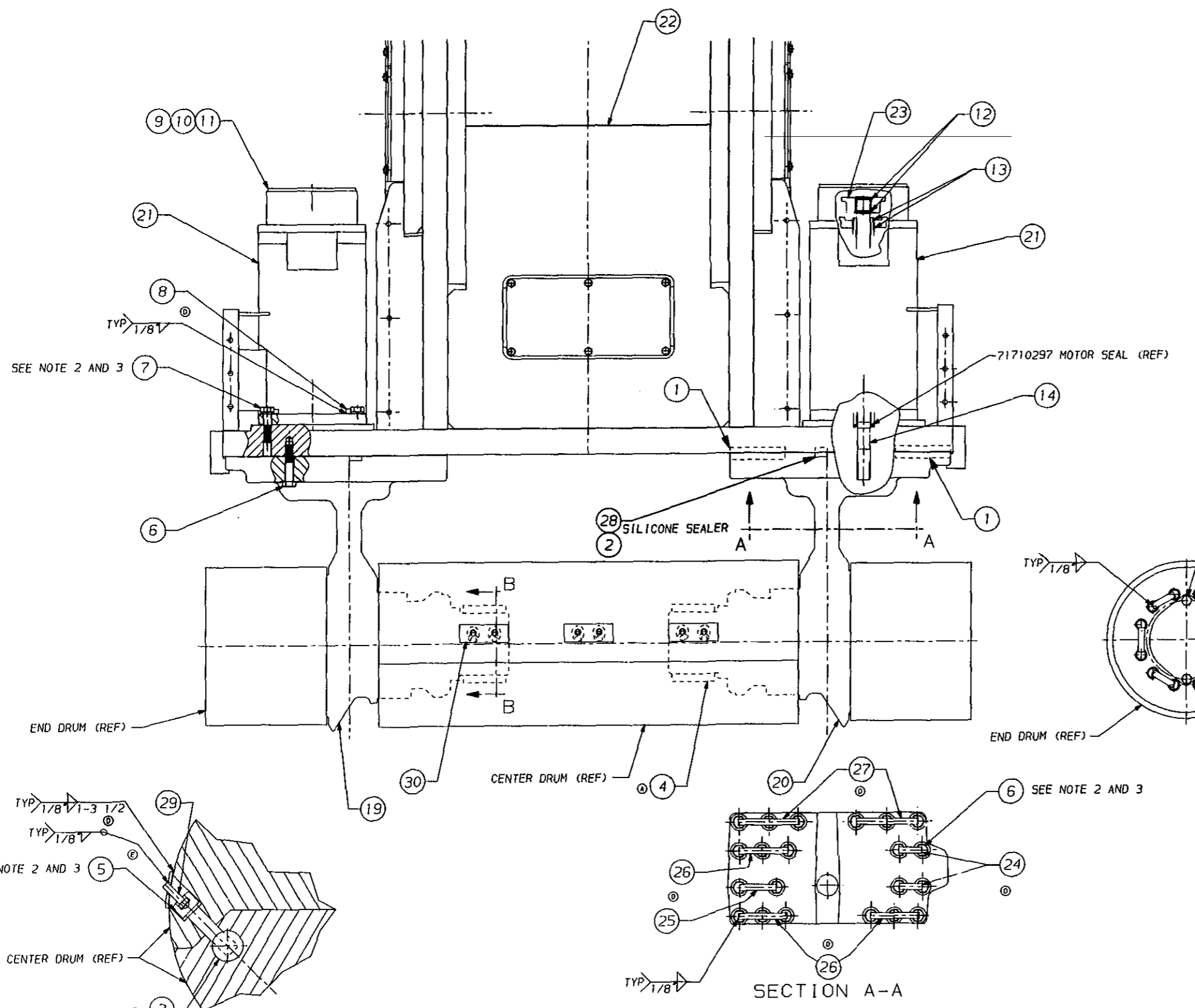
BILL OF MATERIAL				
ITEM NO.	PART NO.	QTY/U/M	DESCRIPTION	BH DWG. SIZE



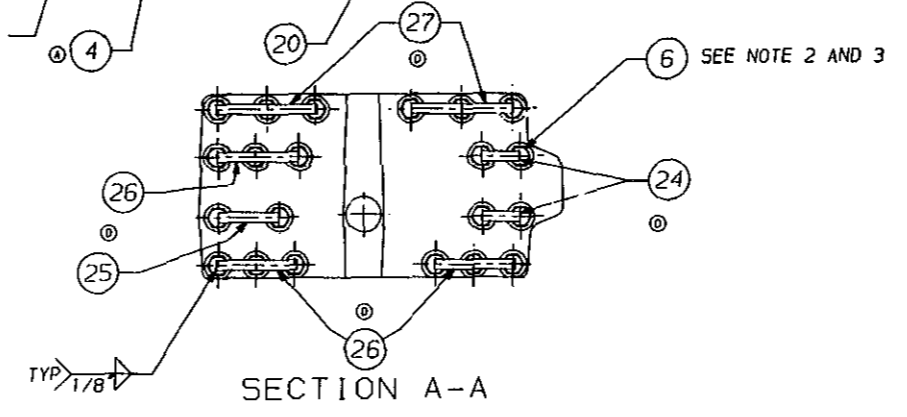
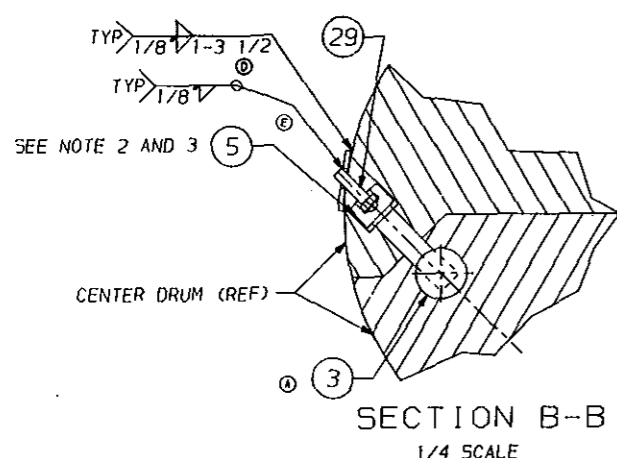
AUG 09 1990

<p>© K710 SCH [initials]</p> <p>© R620 JIN [initials]</p> <p>© K222 JAC [initials]</p> <p>© J278 JAB [initials]</p>		<p>TO ALL PERSONS RECEIVING THIS DRAWING This drawing contains confidential information and is issued in confidence on the condition that it be returned on demand and not be copied, reproduced, disclosed to others or used in the manufacture of the subject matter thereof without the consent of Eimco Coal Machinery Incorporated.</p>	<p>Drawn on CAD</p> <p>Copyright 1989</p> <p><b>EIMCO</b> Coal Machinery Incorporated A Tampa Bay Tamrock Company Fairmont NY 26554</p>	<p>DATE: 3-1-89</p> <p>BY: JAB</p> <p>CHKD: JAB</p> <p>SCALE: AS SHOWN</p> <p>DATE: 3-1-89</p> <p>BY: JAB</p> <p>CHKD: JAB</p> <p>SCALE: AS SHOWN</p>	<p>REV: 1</p> <p>REV: 2</p> <p>REV: 3</p> <p>REV: 4</p> <p>REV: 5</p> <p>REV: 6</p> <p>REV: 7</p> <p>REV: 8</p> <p>REV: 9</p> <p>REV: 10</p>	<p>ITEM NO. 60232537</p> <p>TITLE: CLA GATHERING HEAD ASSEMBLY</p> <p>DATE: 3-1-89</p> <p>BY: JAB</p> <p>CHKD: JAB</p> <p>SCALE: AS SHOWN</p> <p>DATE: 3-1-89</p> <p>BY: JAB</p> <p>CHKD: JAB</p> <p>SCALE: AS SHOWN</p>
---	--	--	---	---	--	--

ITEM NO.	PART NO.	QTY/U/M	DESCRIPTION	DM	ENG. SIZE
1	60110574	4	EA KEY, GEAR CASE		A
2	82332202	2	EA KEY, GEAR CASE		B
3	60234099	REF	EA RETAINER NUT		B
4	82332220	4	EA KEY DRUM DRIVE		B
5	37559806	12	EA SHCS, 1/4"-7UNCx5"LG CAD PL		
6	37443629	42	EA HHCS, 1/4"-7UNC x 6"LG.		
7	37443041	8	EA HHCS, 1/4"-7UNC x 5 LG.		
8	82324021	8	EA RETAINER KEY		
9	60097698	2	EA CLUTCH HOUSING	X	C
10	37420817	16	EA HHCS, 1/2"-13UNC x 2 1/4"LG.		
11	37707916	16	EA 1/2" L WASHER		
12	11705654	4	EA RETAINING RING		
13	11800539	4	EA RETAINING RING		
14	82100058	2	EA MOTOR SHAFT		D
15	60231106	2	EA COVER PLATE		B
16	37437423	4	EA HHCS, 1"-8UNC x 2 1/4"LG.		
17	37438827	24	EA HHCS, 1"-8UNC x 3 3/4"LG.		
18	37708815	4	EA 1" L WASHER		
19	60234191	1	EA RH DRUM DRIVE ASSY	X	D
20	60234192	1	EA LH DRUM DRIVE ASSY	X	D
21	31010358	2	EA MOTOR, 200 HP		
22	60231037	1	EA BOOM ASSY	X	D
23	90916131	2	EA CLUTCH ASSY		
24	3530637	16	EA 1/4"x 1"HR FLAT 4"		
25	3531164	2	EA 1/4"x 1"HR FLAT 6"		
26	3531165	6	EA 1/4"x 1"HR FLAT 8"		
27	8020290	4	EA 1/4"x 1"HR FLAT 10"		
28	60140902	1	EA RTV SILICONE SEALER		
29	37424975	12	EA 9/16"-12 x 2"		
30	60234778	6	EA DETAIL PLATE		A

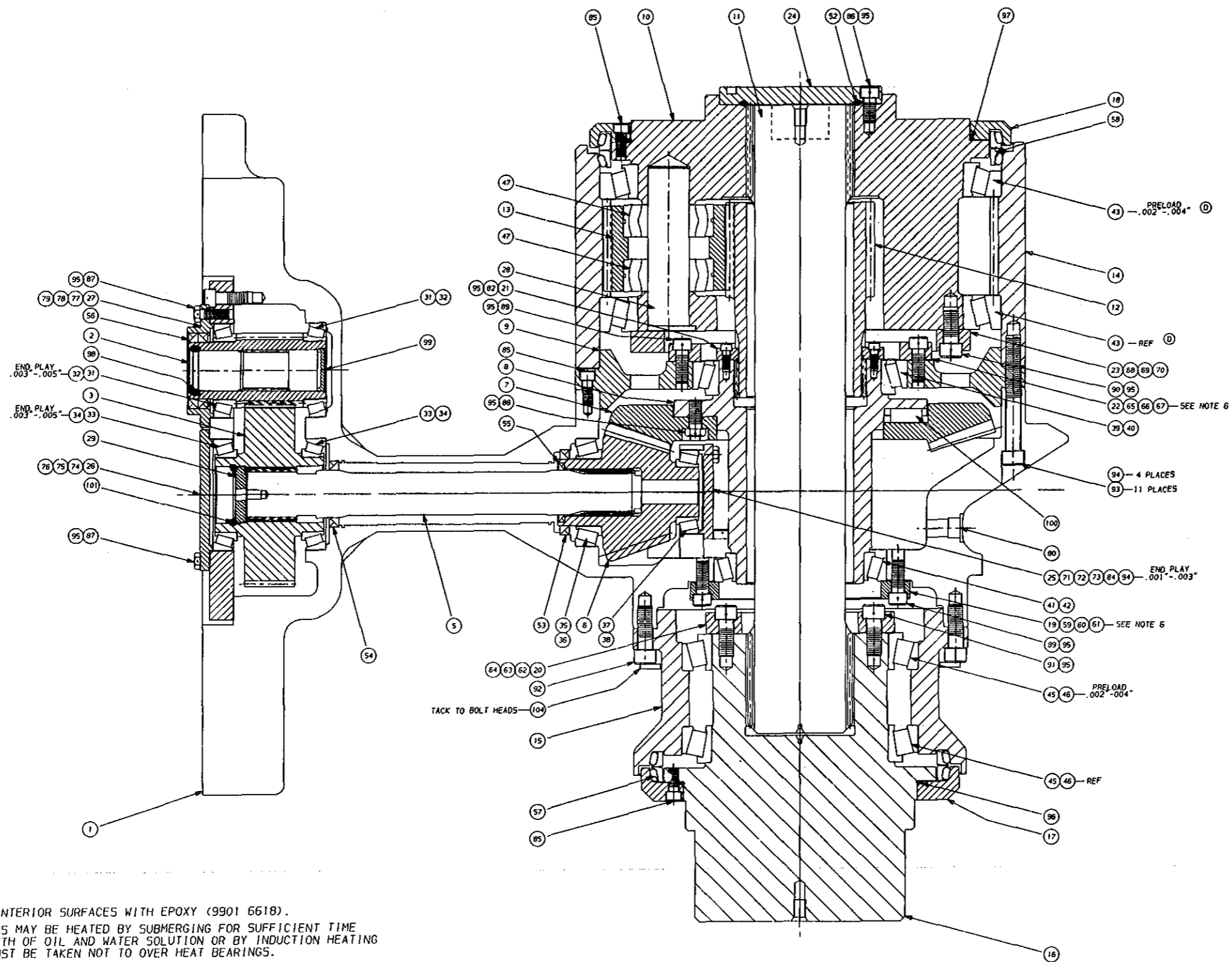


- NOTE:**
- TIGHTEN BOLTS (17) TO 1200 FT/LBs (C)
  - TIGHTEN BOLTS (5), (6) AND (7) TO 1850 FT/LBs
  - STRAP BOLT HEADS AND TACKWELD



M260 MAY 22-91 L793 LH 11-28-91 L350 JRN 2-28-91 K931 JWN 12-11-91 K746 JWN 12-15-91	REV ECH BY DATE REV ECH BY DATE	<b>NOTICE</b> THIS DRAWING IS THE PROPERTY OF EIMCO COAL MACHINERY INCORPORATED AND IS LOANED TO YOU FOR YOUR INFORMATION ONLY. IT IS TO BE RETURNED ON DEMAND AND NOT BE COPIED, REPRODUCED, DISCLOSED OR OTHERWISE USED IN THE MANUFACTURE OF THE SUBJECT MATTER WITHOUT THE CONSENT OF EIMCO COAL MACHINERY INCORPORATED.	Drawn on CAD Copyright 1990 <b>EIMCO Coal Machinery Incorporated</b> A Campbell Tomrock Company Fairmont NY 26554	CHECK DIMENSIONS WITH ALL DIMENSIONS AND IN INCHES TOLERANCES UNLESS OTHERWISE SPECIFIED FINISHES UNLESS OTHERWISE SPECIFIED WEIGHT - CHECK SCH/MAY SCALE 1/8, 1/4, 3/8 NOT SCALE CHECKED BY ECH	NEXT ASSY S/N TITLE CUTTER HEAD ASSY STRAIGHT HD BOOM RD KEVED DRUM DRIVE SHAFT PART NO. 60234190
--	---------------------------------	---	---	---	---

5/17/91



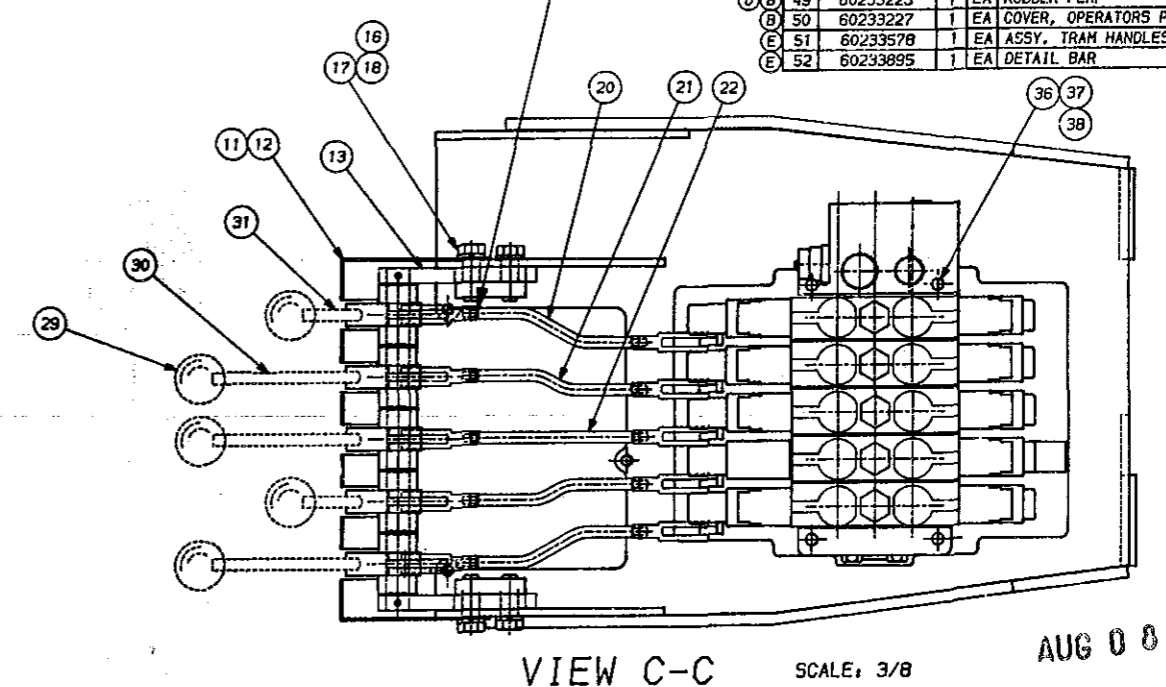
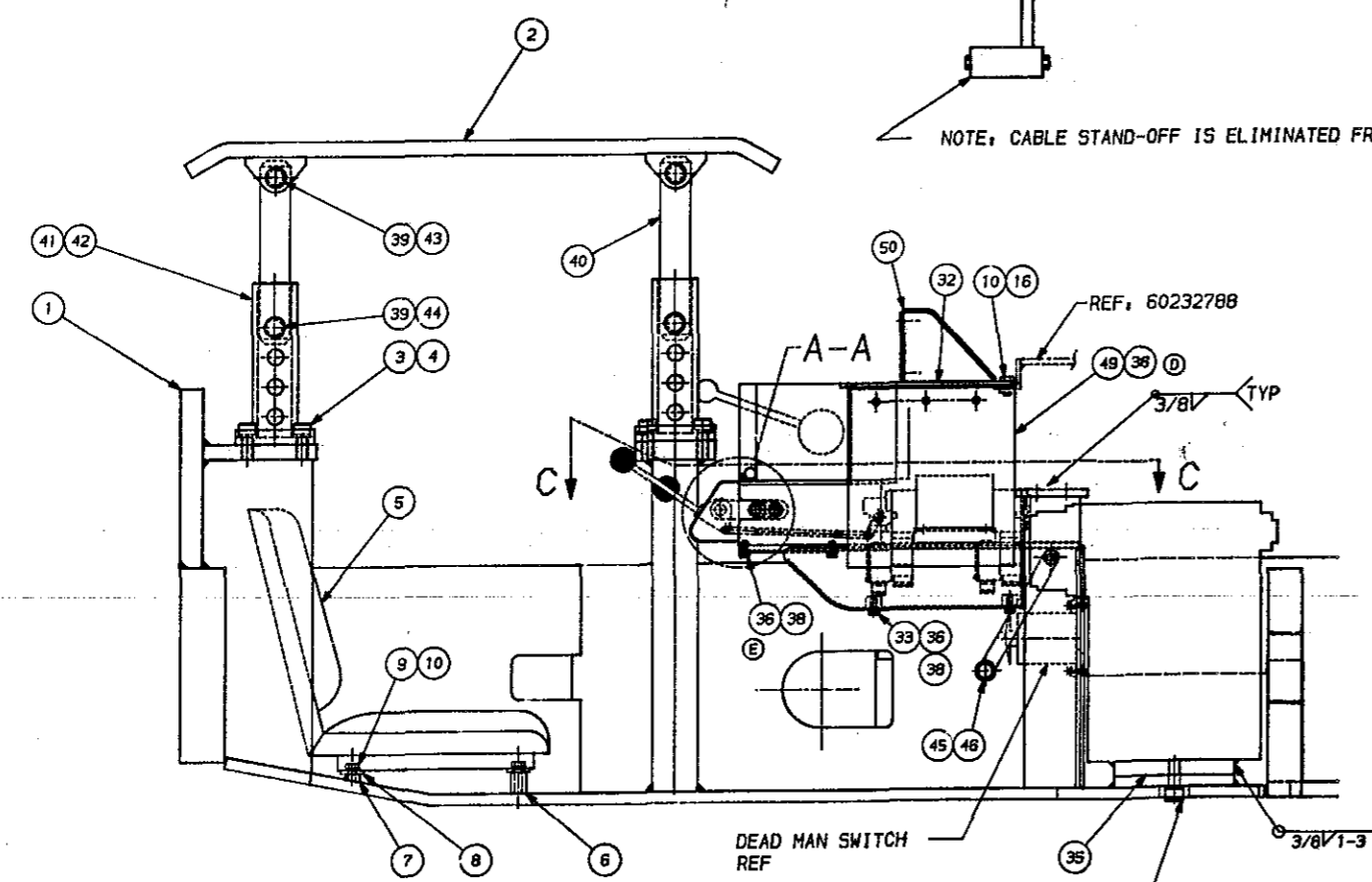
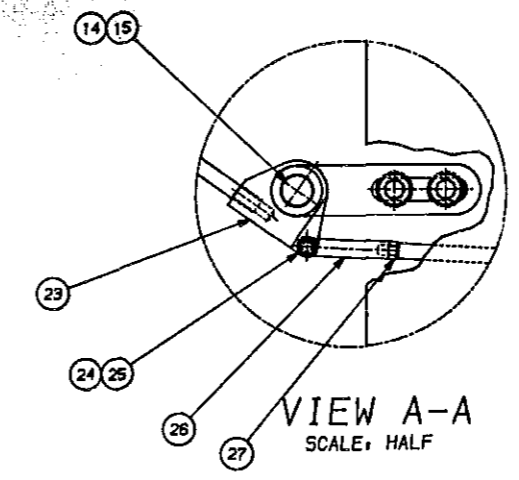
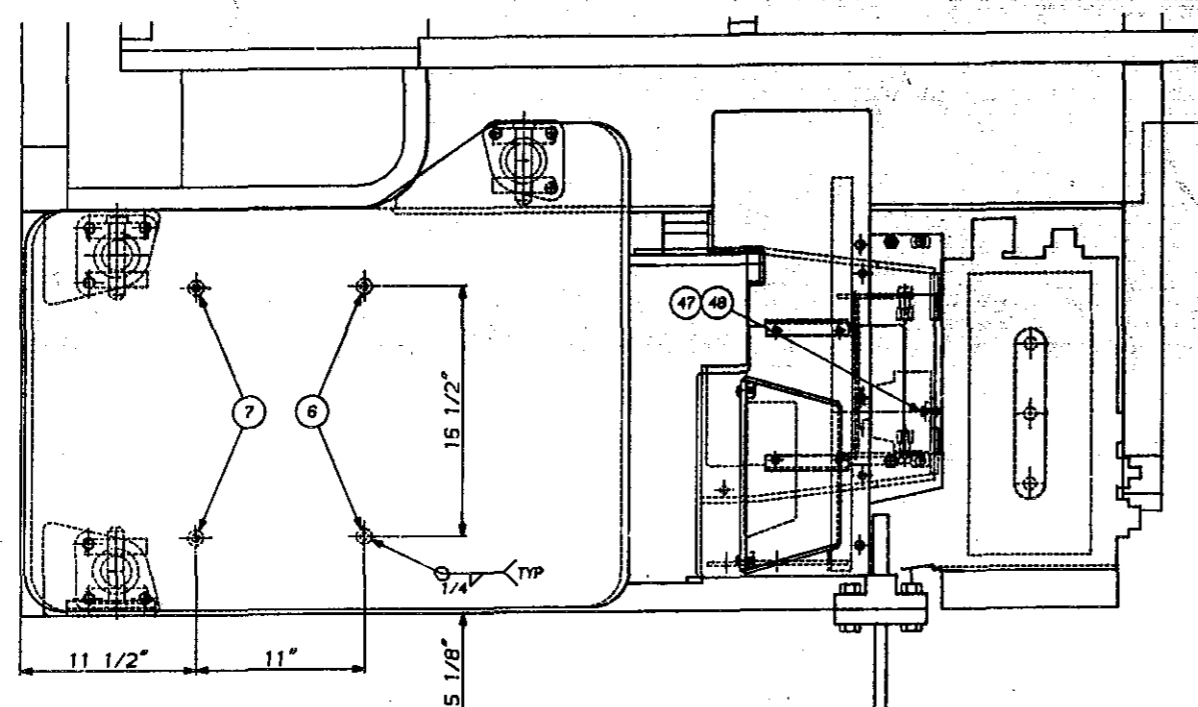
ITEM NO.	PART NO.	QTY	U/M	DESCRIPTION	BM	DWG SIZE
1	6023 0573	1	EA	DRUM DRIVE, GEARCASE	E	
2	6023 0576	1	EA	PINION DRUM DRIVE	C	
3	6023 0577	1	EA	GEAR, INPUT	B	
4						
5	8212 3701	1	EA	SHAFT, GEARCASE	B	
6	6023 0504	1	EA	GEAR, BEVEL	C	
7	6023 0575	1	EA	GEAR, BEVEL	C	
8	4350 1800	1	EA	SHAFT, BEVEL GEAR	C	
9	6023 0839	1	EA	BEARING CARRIER	D	
10	6023 0493	1	EA	PLANET. DRUM DRIVE MACH.	C	
11	8212 3705	1	EA	SHAFT, INPUT CENTER DRUM	C	
12	4322 6903	1	EA	GEAR, SUN	C	
13	4322 6902	3	EA	GEAR, PLANET	B	
14	4322 6904	1	EA	GEAR, RING	C	
15	6023 0857	1	EA	BEARING CARRIER CENTER DRUM	D	
16	8212 3706	1	EA	SHAFT, CENTER DRUM DRIVE	D	
17	6023 0902	1	EA	CARRIER SEAL	C	
18	6023 0903	1	EA	CARRIER SEAL	C	
19	6023 0859	1	EA	PLATE, BEARING ADJ.	C	
20	6023 0849	1	EA	PLATE, BEARING ADJ.	C	
21	6023 0617	1	EA	RING, SPLIT	B	
22	6023 0888	1	EA	PLATE, BEVEL GEAR ADJ.	C	
23	6023 0875	1	EA	PLATE, PLANET. BEARING	C	
24	6023 0904	1	EA	CAP END	B	
25	6023 0899	1	EA	PLATE, NOSE BEARING ADJ.	B	
26	6023 0894	1	EA	PLATE, BEARING ADJ.	B	
27	6023 0893	1	EA	PLATE, INPUT BEARING ADJ.	B	
28	6023 0763	3	EA	PIN, PLANETARY	B	
29	6023 0895	1	EA	SPACER	A	
30	6023 0905	1	EA	COVER	A	
31	1151 3967	2	EA	CONE BEARING		
32	1153 1712	2	EA	CUP BEARING		
33	1154 0514	2	EA	CONE BEARING		
34	1154 0516	2	EA	CUP BEARING		
35	1151 6564	1	EA	CONE BEARING		
36	1152 1432	1	EA	CUP BEARING		
37	1151 0419	1	EA	CONE BEARING		
38	1152 9815	1	EA	CUP BEARING		
39	1152 2513	1	EA	CONE BEARING		
40	1153 8618	1	EA	CUP BEARING		
41	1152 1994	1	EA	CONE BEARING		
42	1152 2588	1	EA	CUP BEARING		
43	1154 0543	2	EA	BEARING ASS'Y		
44						
45	1154 0509	2	EA	CONE BEARING		
46	1154 0510	2	EA	CUP BEARING		
47	1140 9500	6	EA	BEARING		
48						
49						
50						
51						
52	7121 0918	1	EA	O-RING		
53	7171 8142	1	EA	OIL SEAL		
54	7173 0009	1	EA	SEAL LIP		
55	7173 0010	1	EA	SEAL LIP		
56	7173 0011	2	EA	SEAL LIP		
57	7190 1367	1	EA	SEAL DUO ASSY		
58	7190 1615	1	EA	SEAL DUO CONE		
59	8422 7215	3	EA	SHIM, BEVEL GEAR CARRIER .005	A	
60	8422 7216	3	EA	SHIM, BEVEL GEAR CARRIER .007	A	
61	8427 7217	1	EA	SHIM, BEVEL GEAR CARRIER .020	A	
62	8422 7218	3	EA	SHIM, CENTER DRUM SHAFT .005	A	
63	8422 7219	3	EA	SHIM, CENTER DRUM SHAFT .007	A	
64	8422 7220	1	EA	SHIM, CENTER DRUM SHAFT .020	A	
65	8422 7212	3	EA	SHIM, BEVEL GEAR ADJ. .005	A	
66	8422 7213	3	EA	SHIM, BEVEL GEAR ADJ. .007	A	
67	8422 7214	1	EA	SHIM, BEVEL GEAR ADJ. .020	A	
68	8422 7206	3	EA	SHIM, PLANET. BRG. ADJ. .005	A	
69	8422 7207	3	EA	SHIM, PLANET. BRG. ADJ. .007	A	
70	8422 7208	1	EA	SHIM, PLANET. BRG. ADJ. .020	A	

NOTES

1. PAINT INTERIOR SURFACES WITH EPOXY (9901 6618).
2. BEARINGS MAY BE HEATED BY SUBMERGING FOR SUFFICIENT TIME IN A BATH OF OIL AND WATER SOLUTION OR BY INDUCTION HEATING CARE MUST BE TAKEN NOT TO OVER HEAT BEARINGS.
3. USE NON-HARDENING GRADE OF PERMATEX NO. 2 OR EQUIVALENT ON THREADS OF ALL THRU FASTENERS AND MATING SURFACES NOT O-RING SEALED. USE LUBON 404 ON PIPE FITTINGS.
4. REFER TO DWG. NO. (9104 0675-A) FOR MECH FACE SEAL INSTALLATION.
5. USE SUFFICIENT SHIMS TO PROVIDE BEARING SETTINGS AS NOTED.
6. BEVEL GEAR SHAFT TO BE SET AT .000"-.002" END PLAY. SHIMS TO BE PROPORTIONED SUCH THAT GEAR & PINION HAVE .006"-.008" BACKLASH.
7. ALIGN KEYWAY ON PLANETARY WITH CORNER ON CENTER DRUM DRIVE SHAFT.

AUG 09 1990

<p>REV ECN BY DATE</p> <p>① K932 JHM 8/15/90</p> <p>② K498 JHM 8/15/90</p> <p>③ 6905 JHM 8/15/90</p> <p>④ 6043 JHM 8/15/90</p>	<p>REV ECN BY DATE</p>	<p>-NOTICE-</p> <p>TO ALL PERSONS RECEIVING THIS DRAWING</p> <p>This drawing contains confidential information and is issued in confidence on the condition that it be returned on demand and not be copied, reproduced, or released to others without the consent of Eldec Coal Machinery Incorporated.</p>	<p>Drawn on CAD Copyright 1988</p> <p><b>EIMCO</b> Coal Machinery Incorporated</p> <p>A Tompkins Towerlock Company Fairmont, WV 26554</p>	<p>UNITED STATES PATENT AND TRADEMARK OFFICE</p> <p>REGISTERED TRADEMARK</p> <p>TRADEMARK OF EIMCO</p> <p>DATE: 08-24-88</p> <p>SCALE: XXXX CHECKED: JHM</p> <p>DWG No. PART No. 60230737/SH. 1</p>
--	------------------------	--	---	---



BILL OF MATERIAL					REV NO.
					60231718
ITEM NO.	PART NO.	QTY	U/M	DESCRIPTION	BN
1	60232780	REF.		WELDMENT, FIXED PIT INSTAL	X D
2	6023 0409	REF.		CANOPY WELDMENT	B
3	3751 6416	REF.		3/4" -10 x 1 1/2 SHCS	
4	3770 8518	REF.		3/4" LOCKWASHER	
5	9902 4509	1	EA	SEAT ASSEMBLY	
6	3015 3910	2	EA	SEAT SUPPORT, FRONT	A
7	6023 1843	2	EA	SEAT SUPPORT, REAR	A
8	6023 1841	2	EA	BRACKET, SEAT	B
9	3741 7623	4	EA	1/2" -13 x 5/8 HHCS	
10	3770 7916	7	EA	1/2" LOCKWASHER	
11	6023 1869	1	EA	COVER, LINKAGE PIVOT	B
12	6022 4797	1	EA	LABELS, CONTROL	B
13	6023 1192	2	EA	ADJUSTMENT BRACKET, PIVOT	A
14	6023 1779	1	EA	PIVOT ROD	A
15	8292 4580	2	EA	ROLL PIN 5/32" x 1 1/4	
16	3742 4793	7	EA	1/2" -13 x 1 1/2 HHCS	
17	60232204	2	EA	RETAINER STRAP	A
18	3770 1794	4	EA	1/2" FLATWASHER	
19					
20	6023 1158	2	EA	LINKAGE ROD	A
21	6023 1159	2	EA	LINKAGE ROD	A
22	6023 1160	1	EA	LINKAGE ROD	A
23	6023 1155	5	EA	PIVOT, VALVE LINKAGE	A
24	3720 0417	10	EA	COTTER PIN 1/16" x 1/2	
25	8293 1213	10	EA	PIN	A
26	6419 5811	10	EA	CLEVIS	A
27	3710 2019	10	EA	1/4" -28 UNF NUT	
28	6023 1991	1	EA	BRACKET, COVER	
29	6409 5169	5	EA	KNOB 3/8" -16	A
30	6023 2209	3	EA	CONTROL ROD (6 3/4" LG)	A
31	6023 2209	2	EA	CONTROL ROD (3/8" LG)	A
32	60232224	1	EA	COVER, VALVE BANK (TOP)	X B
33	6023 1870	1	EA	COVER, VALVE BANK (BTH)	B
34					
35	6023 1780	1	EA	MTG PLATE, CONTROLLER CASE	B
36	3741 0024	12	EA	3/8" -16 x 3/4" HHCS	
37	3741 1535	2	EA	3/8" -16 x 1 1/4" HHCS	
38	3770 7114	11	EA	3/8" LOCKWASHER	
39	3720 4765	REF.		COTTER PIN 1/4" x 1 3/4	
40	6023 0384	REF.		CANOPY RAISING PIN	B
41	6023 1166	REF.		CANOPY LEG WELDMENT	B
42	6023 1167	REF.		CANOPY LEG WELDMENT	B
43	8290 2644	REF.		PIN, BRAKE 1" x 5	B
44	8290 2313	REF.		PIN, BRAKE 1" x 3 3/4	B
45	6023 2019	1	EA	DEAD MAN BAR	X C
46	3700 8125	2	EA	HX SOC HD SHLDR SCR	
47	3740 1221	2	EA	1/4" -20 x 1 HHCS	
48	3770 6413	2	EA	1/4" LOCKWASHER	
49	60233225	1	EA	RUBBER FLAP	A
50	60233227	1	EA	COVER, OPERATORS PIT	X C
51	60233578	1	EA	ASSY, TRAM HANDLES	D
52	60233895	1	EA	DETAIL BAR	A

-NOTICE-  
 TO ALL PERSONS RECEIVING THIS DRAWING  
 This drawing contains confidential information  
 and is issued in confidence on the conditions  
 that it be returned on demand and not be  
 copied, reproduced, disclosed to others or  
 used in the manufacture of the subject matter  
 thereof without the consent of Eimco Coal  
 Machinery Incorporated.

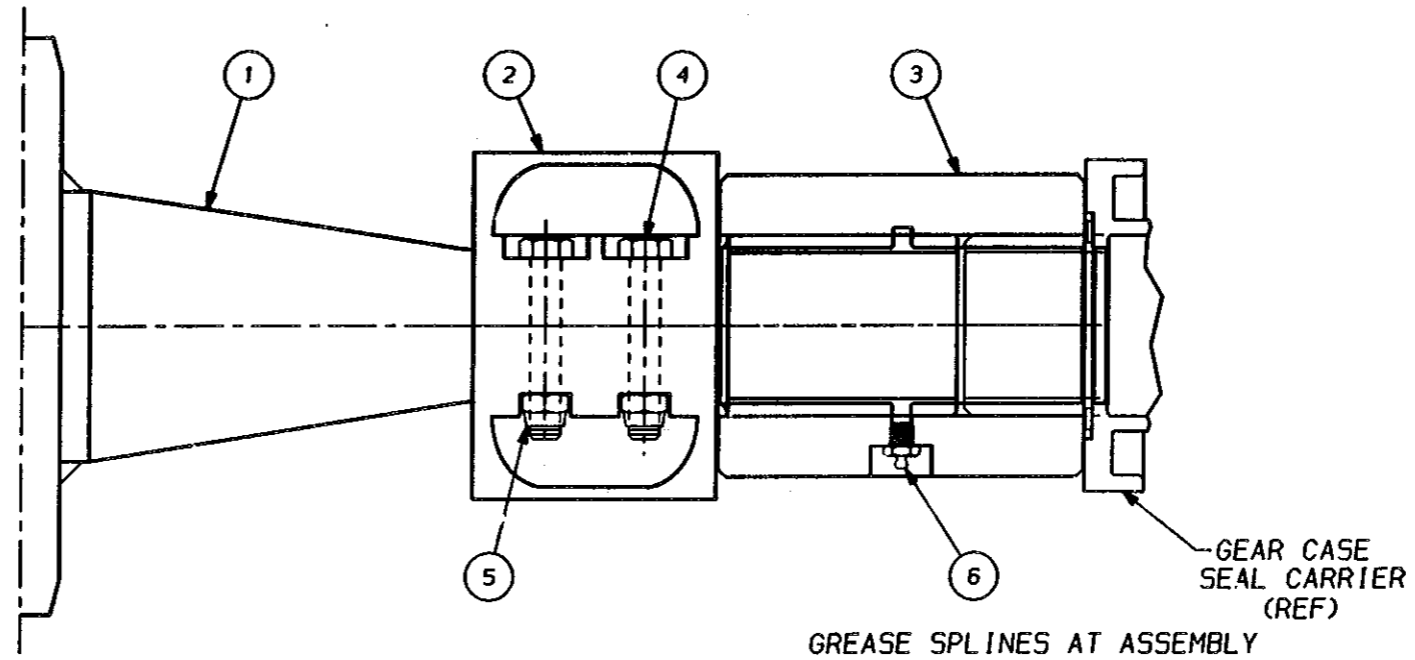
Drawn on CAD Copyright 1989  
**EIMCO** Coal Machinery Incorporated  
 A Tappan Tool Company Fairmont NY 26554

TITLE: ASSEMBLY, FIXED PIT INSTALLATION  
 2010 WITH SCRUBBER  
 REV NO: 1  
 PART NO: 60232781  
 DWG SIZE: D

AUG 0 8 1990

REV	ECH	BY	DATE	REV	ECH	BY	DATE
1		JAB	1/2/89				
2		JAB	1/2/89				
3		JAB	1/2/89				
4		JAB	1/2/89				
5		JAB	1/2/89				
6		JAB	1/2/89				
7		JAB	1/2/89				
8		JAB	1/2/89				

BILL OF MATERIAL					B/M No. 60234278	
ITEM NO.	PART NO.	QTY	U/M	DESCRIPTION	BM	DWG. SIZE
1	60234279	1	EA	WELDMENT- FOOTSHAFT	X	C
2	60232891	2	EA	COLLAR	X	C
3	60233314	2	EA	COUPLING		B
4	37421922	8	EA	HHCS 1/2-13 X 3"		
5	37113818	8	EA	FLEXLOCK NUT		
6	50087410	2	EA	GREASE FITTING		



AUG 08 1990

<table border="1"> <tr><td>(E)</td><td></td><td>(L)</td><td></td></tr> <tr><td>(D)</td><td></td><td>(K)</td><td></td></tr> <tr><td>(C)</td><td></td><td>(H)</td><td></td></tr> <tr><td>(B)</td><td></td><td>(G)</td><td></td></tr> <tr><td>(A)</td><td></td><td>(F)</td><td></td></tr> </table>		(E)		(L)		(D)		(K)		(C)		(H)		(B)		(G)		(A)		(F)		<p><b>-NOTICE-</b> TO ALL PERSONS RECEIVING THIS DRAWING This drawing contains confidential information and is issued in confidence on the condition that it be returned on demand and not be copied, reproduced, disclosed to others or used in the manufacture of the subject matter thereof without the consent of Eimco Coal Machinery Incorporated.</p>	<p>Drawn on CAD Copyright 1989</p> <p><b>EIMCO</b> Coal Machinery Incorporated A Tempetto Tamrook Company Fairmont WV 26554</p>	<p>UNLESS OTHERWISE NOTED ALL DIMENSIONS ARE IN INCHES MACHINE DECIMALS ± .005" FRACTIONS ± 1/64" TOLERANCE ANGLES ± 30 MINUTES FABRICATION TOL ± 1/16"</p> <p>MODEL 2810 DATE 5-29-90 WEIGHT 170# DRAWN LH SCALE 1/2 CHECKED DO NOT SCALE CHIEF ENGR</p>	<p>NEXT ASSY. S/N TITLE ASSY. CLA FOOTSHAFT CINCINNATI SPROCKET 550 CHAIN DWG No. /PART No. 60234278 DWG SIZE B</p>
(E)		(L)																							
(D)		(K)																							
(C)		(H)																							
(B)		(G)																							
(A)		(F)																							

CLICK HERE TO **DOWNLOAD** THE COMPLETE MANUAL

- Thank you very much for reading the preview of the manual.
- You can download the complete manual from: [www.heydownloads.com](http://www.heydownloads.com) by clicking the link below



- Please note: If there is no response to CLICKING the link, please download this PDF first and then click on it.

CLICK HERE TO **DOWNLOAD** THE COMPLETE MANUAL