



BI019791
April 2013

Operation and Maintenance Manual

IMPACT ROLL CRUSHER SB 0815

CLICK HERE TO **DOWNLOAD** THE COMPLETE MANUAL

- Thank you very much for reading the preview of the manual.
- You can download the complete manual from: www.heydownloads.com by clicking the link below



- Please note: If there is no response to CLICKING the link, please download this PDF first and then click on it.

CLICK HERE TO **DOWNLOAD** THE COMPLETE MANUAL



4 Assembly



Roll height adjustment

The final product size while crushing can be varied with the height adjustment.

The impact roll can be adjusted in its height by means of hydraulic cylinders. These cylinders can be pressured by a hydraulic pump or by valves.

Pressure fluid is oil (customer sided face hydraulic).

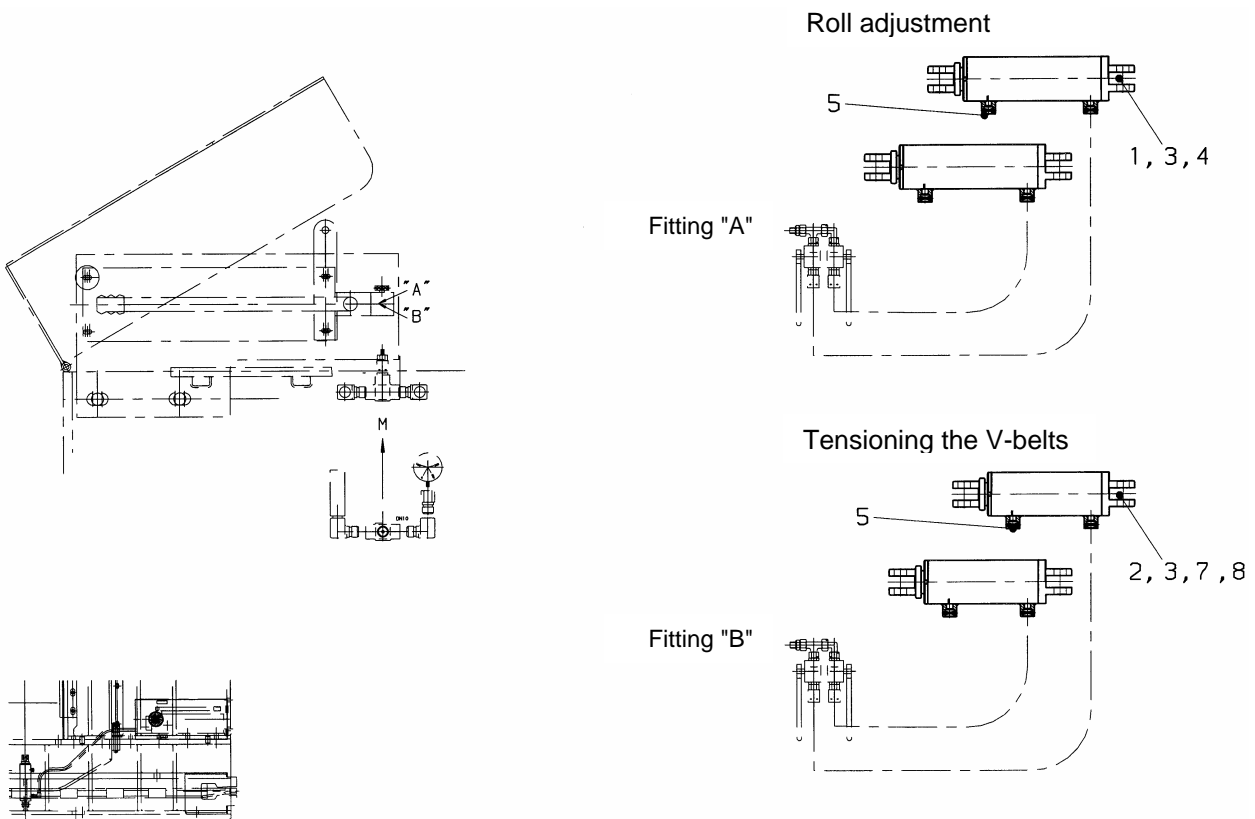
The roll height adjustment will be realized by the customer. Included in delivery are only the hydraulic cylinders and the fastening elements.



Important!

How to adjust the height of the impact roll will be described in chapter 6 "Operation - Roll height adjustment"!

Figure 10: Hydraulical roll height adjustment



1	Hydraulic cylinder (roll)
2	Hydraulic cylinder (V-belt)
For parts not listed here, please refer to the spare part list supplied	



Important!

The hydraulic cylinders for tensioning the V-belts are located in this component (Roll height adjustment) also. How to tension will be described in chapter 6 "Operation - Tensioning the V-belts"!

Test run and start up



Danger!

During the test run no person may be in the danger area of the crusher plant.

There could be faults, which have an effect on standard operation, e.g. assembly faults.

Because of such faults very serious injury or even death can be the result!



Warning!

For safety reasons there should always be at least two persons when performing the test run.

The valid safety instructions of the mechanics and electricians must be observed!

e.g.:

- Never operate switches, valves, control devices, etc. unauthorized



Danger!

Always wear protecting helmet, goggles, hearing protection, safety shoes and safety gloves!

Check the following points during the test run:

- Perform test run of approx. 0.5 hours at no load:
Particularly check temperature of the bearings, running noises, leakages at bearing points, vibrations etc.
- Perform trial run under load:
Increase load gradually up to rated load. While doing so, check drives for rises in temperature, running noise, vibration, and leakages.
- Check function of the safety devices.
- Check for uniform and equal current consumption of the electric motors.



Warning!

In case of faults, inexplicable noises and movements shut-off the crusher plant immediately over the emergency-stop switch!

After checking the test run can be continued.

When no faults are found during the test run respectively all found faults are eliminated the crusher plant can be put into operation.

CLICK HERE TO **DOWNLOAD** THE COMPLETE MANUAL

- Thank you very much for reading the preview of the manual.
- You can download the complete manual from: www.heydownloads.com by clicking the link below



- Please note: If there is no response to CLICKING the link, please download this PDF first and then click on it.

CLICK HERE TO **DOWNLOAD** THE COMPLETE MANUAL