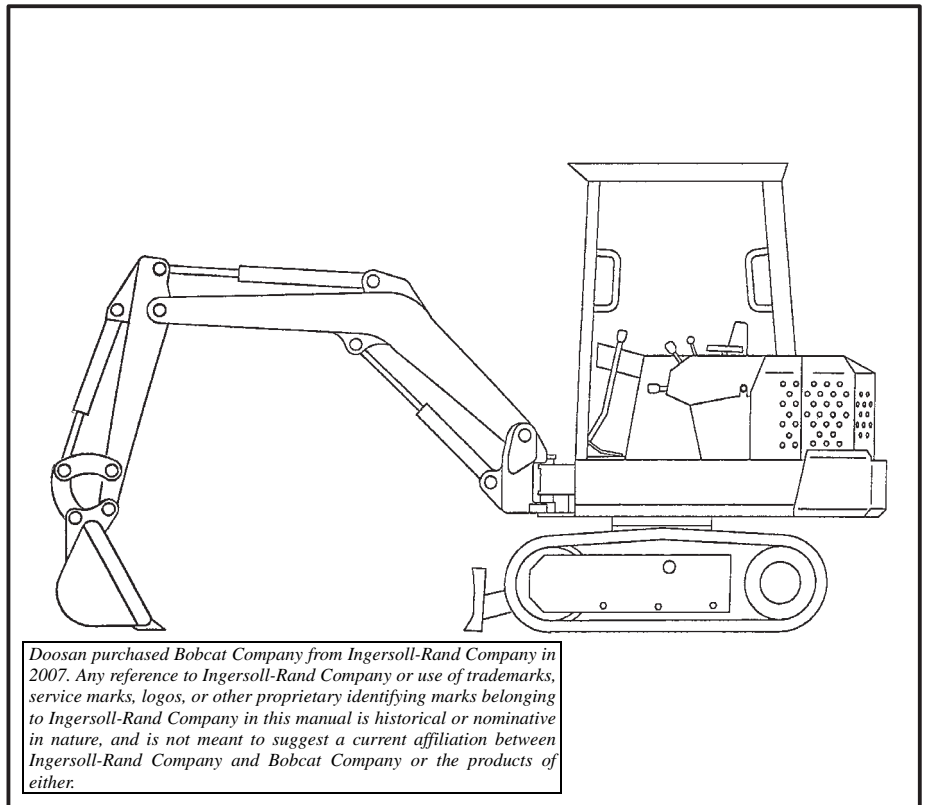


X 225

Excavator

Operation & Maintenance Manual

(S/N 508312001 & Above)



CLICK HERE TO **DOWNLOAD** THE COMPLETE MANUAL


- Thank you very much for reading the preview of the manual.
- You can download the complete manual from: www.heydownloads.com by clicking the link below



- Please note: If there is no response to CLICKING the link, please download this PDF first and then click on it.

CLICK HERE TO **DOWNLOAD** THE COMPLETE MANUAL

BEFORE OPERATING THE BOBCAT HYDRAULIC EXCAVATOR

 **Safety Alert Symbol:** This symbol with a warning statement, means: “Warning, be alert! Your safety is involved!” Carefully read the message that follows.



WARNING

Operator must have instructions before operating Bobcat loader or excavator and approved attachment. Untrained operators can cause injury or death.

W-2253-0996



B-10731

The Excavator must be in good operating condition before use. Check all of the items on the Service Schedule under the 8-10 hour column or as shown in this manual.



WARNING

For your safety, warnings are on the machine and in the Operation & Maintenance manual. Failure to obey warnings can cause injury or death.

W-2044-1285

IMPORTANT

This notice identifies procedures which must be followed to avoid damage to the machine.

I-2019-0284

SAFE OPERATION NEEDS A QUALIFIED OPERATOR*

A QUALIFIED OPERATOR MUST DO THE FOLLOWING:

- UNDERSTAND THE WRITTEN INSTRUCTIONS, RULES AND REGULATIONS
 - The written instructions from Melroe Company include the Delivery Report, Operation & Maintenance Manual, Operator Handbook, and machine signs (decals).
 - Check the rules and regulations at your location. The rules may include an employer's work safety requirements. Regulations may apply to local driving requirements or use of Slow Moving Vehicle emblem. Regulations may identify a hazard such as a utility line.
- HAVE TRAINING WITH ACTUAL OPERATION
 - Operator training must consist of a demonstration and verbal instruction. This training is given by your excavator dealer before the excavator is delivered.
 - The new operator should start in an area without bystanders and use all the controls until he can operate safely under all conditions of the work area.
 - The Compact Excavator Operator Training Course is available in English and Spanish. The course provides information for safe and efficient operation. See your dealer for availability.
- KNOW THE WORK CONDITIONS
 - For each material to be handled, the operator must know how to avoid exceeding the rated lift capacity of the excavator. For example, you should not use the excavator for lifting heavy objects.
 - The operator must know any prohibited uses or work areas, for example, he needs to know about excessive slopes
 - Know the location of any underground lines. Call local utilities or the TOLL FREE phone number found in the *SAFETY INSTRUCTIONS* Section of this manual.
 - Wear tight fitting clothing. Always wear safety glasses when maintaining or servicing excavator. Safety glasses, hearing protection or an excavator special application kit are required for some work. See your dealer about Melroe Safety equipment.

* For an operator to be qualified, he must not use drugs or alcoholic drinks which impair his alertness or coordination while working. An operator who is taking prescription drugs must get medical advice to determine if he can safely operate a machine.

S123-0598

CONTROL LEVERS (Cont'd)

The work equipment is operated by using the right and left control levers (joysticks) [A] & [B].

Operation Of Left Control Lever (STANDARD)

Boom and Swing (Decal P/N 6589842)

The left lever is used to operate the boom and swing the upperstructure [A]:

1. Boom Lower
2. Boom Lower and Swing Right
3. Swing Right
4. Boom Raise and Swing Right
5. Boom Raise
6. Boom Raise and Swing Left
7. Swing Left
8. Boom Lower and Swing Left

IMPORTANT

Before swinging the upperstructure, make sure the swing lock is disengaged.

I-2051-0189

Operation Of Right Control Lever (STANDARD)

Arm and Bucket (Decal P/N 6589843)

The right lever is used to operate the arm and bucket [B]:

1. Arm out
2. Arm Out and Bucket Dump
3. Bucket Dump
4. Arm In and Bucket Dump
5. Arm In
6. Arm In and Bucket Curl
7. Bucket Curl
8. Arm Out and Bucket Curl

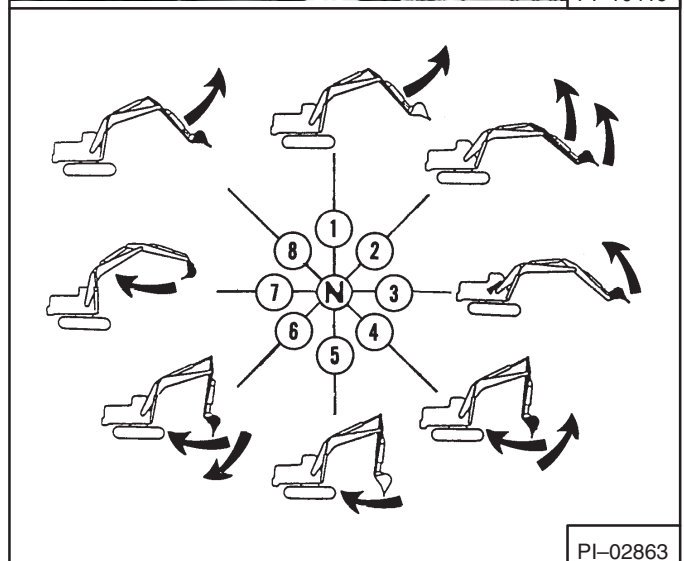
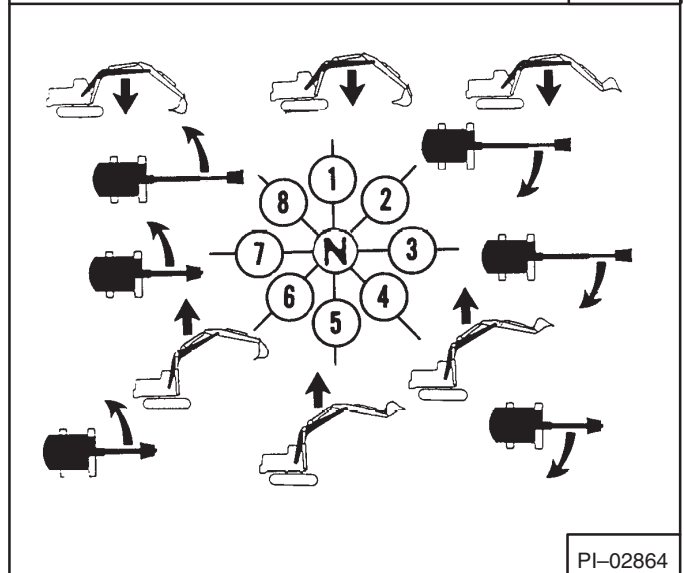
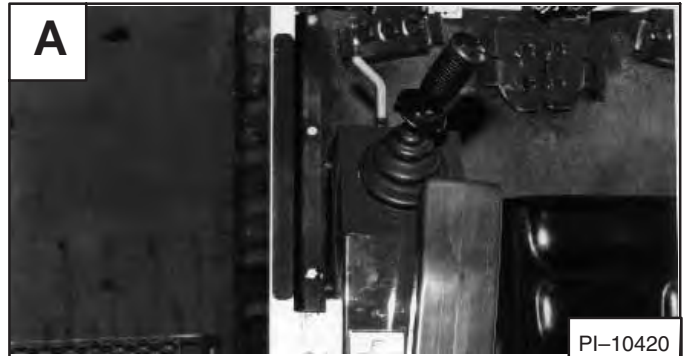
! WARNING

AVOID INJURY OR DEATH

Before leaving the machine:

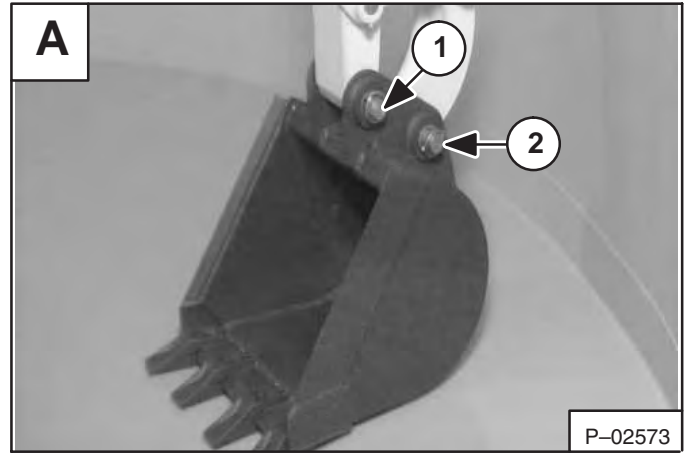
- Lower the work equipment to the ground.
- Lower the blade to the ground.
- Stop the engine & remove the key.

W-2196-0595



BUCKET

Removal



Select a flat level surface. Put the bucket on the ground.

Remove the quick pin from the pivot pins (Items & 2) [A].

Remove the pivot pins and keep them clean. Do not damage the dust seals in the arm and the link.

Installation

Install the arm into the bucket and align the hole [A].
Install the pivot pin (Item 1) [A].

Attach the link to the other hole and install the pivot pin (Item 2) [A].

Install the quick pins. Add grease to the pivot pins before operation.

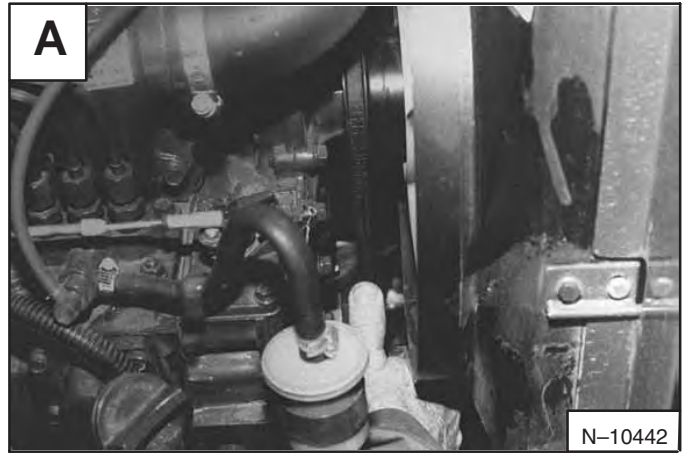


ALTERNATOR/FAN BELT ADJUSTMENT

To adjust the belt tension, use the following procedure:

STOP the engine. Open the engine cover.

The belt should deflect about 1/2 inch (13 mm) when pressed between the water pump pulley and crankshaft pulley with approximately 13 lbs. (58 N) pressure **[A]**.



If the tension is not correct:

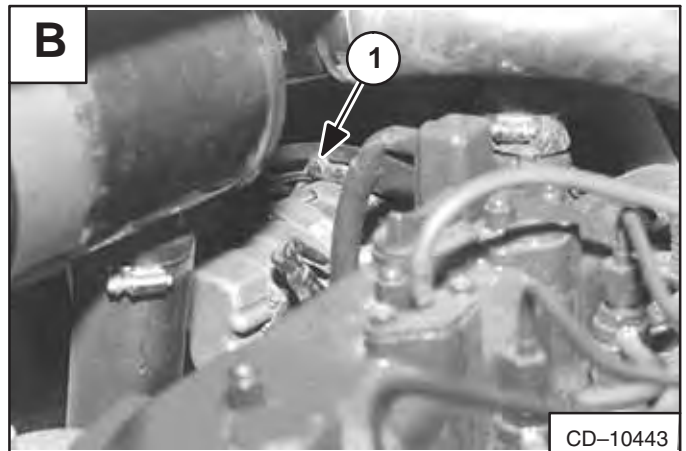
Loosen the alternator mounting bolt.

Loosen the adjustment bolt (Item 1) **[B]**.

Move the alternator until the belt tension is correct.

Tighten the adjustment bolt and alternator mounting bolt.

Replace the belt if it has stretched or there are cracks in the belt. Check the pulley grooves, make sure the belt is not in contact with the bottom of the grooves in the pulleys.





CLICK HERE TO **DOWNLOAD** THE COMPLETE MANUAL

- Thank you very much for reading the preview of the manual.
- You can download the complete manual from: www.heydownloads.com by clicking the link below



- Please note: If there is no response to CLICKING the link, please download this PDF first and then click on it.

CLICK HERE TO **DOWNLOAD** THE COMPLETE MANUAL