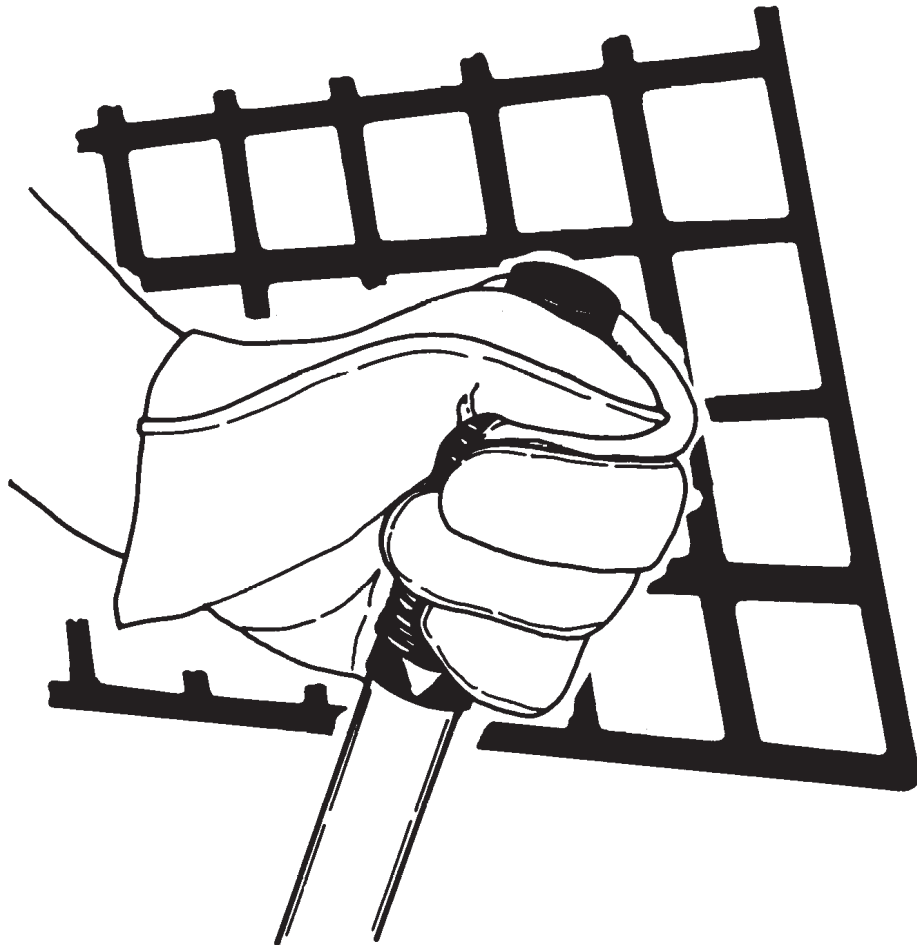




PLANER

S/N 052300701 & 303600101 & Above

Operation & Maintenance Manual



**MELROE
INGERSOLL-RAND**

6722362(4-93)



bobcat[®]
© Melroe Company 1996
Printed in U.S.A.

CLICK HERE TO **DOWNLOAD** THE COMPLETE MANUAL

- Thank you very much for reading the preview of the manual.
- You can download the complete manual from: www.heydownloads.com by clicking the link below



- Please note: If there is no response to CLICKING the link, please download this PDF first and then click on it.

CLICK HERE TO **DOWNLOAD** THE COMPLETE MANUAL

SAFETY INSTRUCTIONS

SAFETY IS THE OPERATOR'S RESPONSIBILITY

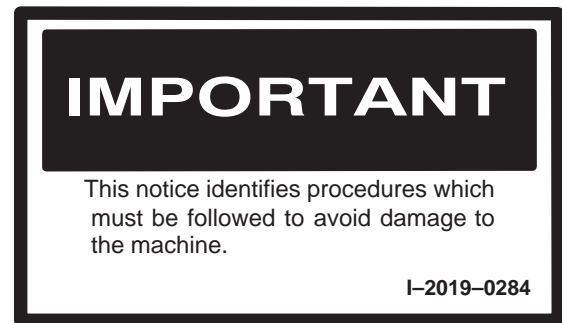
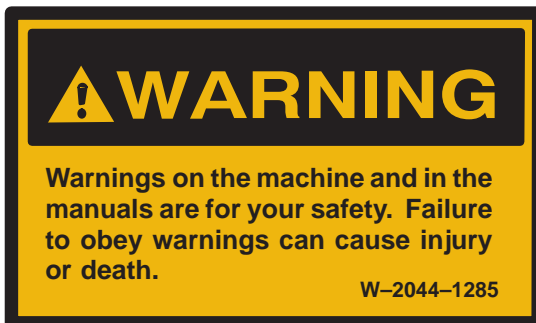
The Bobcat loader and Planer are designed to give maximum safety; but no machine design can prevent operator error or carelessness.

READ THIS MANUAL BEFORE YOU OPERATE THE BOBCAT PLANER AND LOADER



B-10731

Operation & Maintenance Manuals are written to give the owner/operator instructions on the safe operation and maintenance of the Bobcat loader and planer. READ AND UNDERSTAND THIS OPERATION & MAINTENANCE MANUAL AND THE LOADER OPERATION & MAINTENANCE MANUAL BEFORE OPERATING YOUR BOBCAT LOADER AND PLANER. If you have any questions, see your Bobcat Loader dealer.



SAFE OPERATION NEEDS A QUALIFIED OPERATOR*

A QUALIFIED OPERATOR* MUST DO THE FOLLOWING:

- UNDERSTAND THE WRITTEN INSTRUCTIONS, RULES AND REGULATIONS
 - The written instructions from Melroe Company include the delivery report, loader operator's handbook and Manual, EMI Safety Manual (available in Spanish P/N 6724451) and Machine Signs (Decals).
 - Check the rules and regulations at your location. The rules may include an employer's work safety requirements. Regulations may identify a hazard such as an underground utility line.
- HAVE TRAINING WITH ACTUAL OPERATION
 - Operator training must consist of a demonstration and verbal instruction. This training is given by the Bobcat dealer before the Planer is delivered.
 - The new operator should start in an area without bystanders and use all the controls until he can control the machine safely under all conditions of the work area.
- KNOW THE WORK CONDITIONS
 - The operator must know any prohibited uses or work areas, for the machine.

* For an operator to be qualified, he must not use drugs or alcoholic drinks which change his alertness or coordination while working. An operator who is taking prescription drugs must get medical advice to determine if he can safely operate a machine.

OPERATING PROCEDURE (Cont'd)

Operating The Planer (Cont'd)

The Planer can be angled to a maximum of 15 degrees right or left as needed.

Loosen the two nuts on the back of the frame [A].

Rotate the Planer to the desired angle and retighten the nuts.

NOTE: The two nuts (Item 1) [A] may be loosened slightly to allow the Planer to oscillate with respect to the hydraulic ski adjustment.

To recenter the Planer, loosen the nuts and align the two pivot frame points (Item 1) [B] as shown.

Tilt the Planer fully backward and lower the lift arms fully.

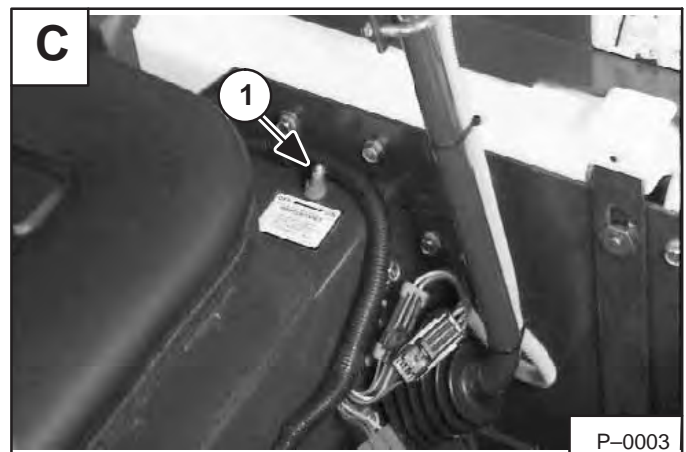
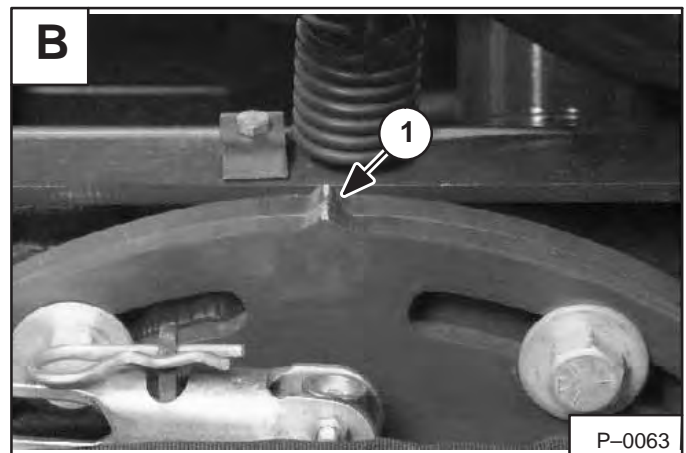
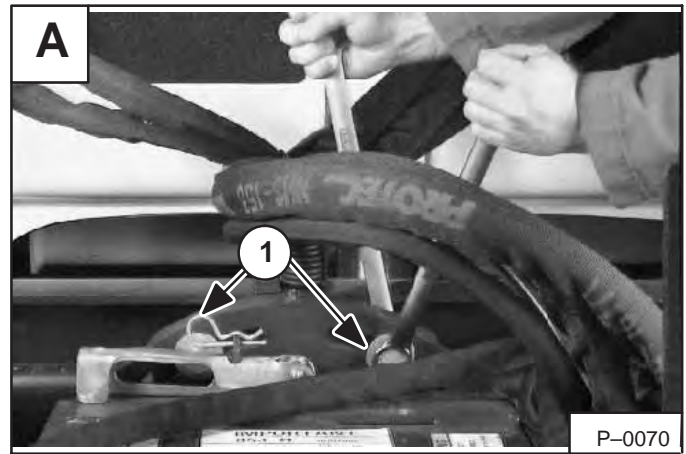
FLOAT position may be used per operator preference.

NOTE: Be sure the Planer teeth DO NOT make contact with the cutting surface at this time.

With the engine at idle speed, lift and push the toggle switch (Item 1) [C] on the left side of the seat to activate the high horsepower hydraulics function.

NOTE: When the toggle switch on the 843H is ON the high horsepower and front auxiliary functions are activated.

Push the mode switch twice (two lights) for continuous operation [D].



PLANER SERVICE

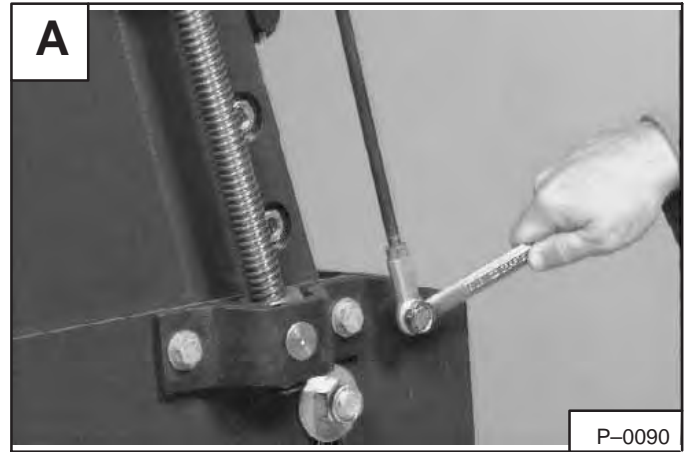
| | |
|--|----|
| ADJUSTMENT SCREW ASSEMBLY | |
| Removal And installation | 26 |
| Disassembly And Assembly | 27 |
| CYLINDER | |
| Removal And installation | 24 |
| CUTTING DEPTH GAUGE | |
| Removal And installation | 27 |
| DRIVE MOTOR | |
| Removal And installation | 37 |
| Disassembly And Assembly | 40 |
| Parts Identification | 39 |
| Front Housing Disassembly And Assembly | 43 |
| Rear Housing Disassembly And Assembly | 40 |
| Rotating Assembly Disassembly And Assembly | 42 |
| DRUM | |
| Drum Cover Lift Handle Adjustment | 33 |
| Drum Cover Removal And Installation | 34 |
| Removal And Installation | 35 |
| Replacing Carbide Bits | 36 |
| HYDRAULIC CONTROL VALVE | |
| Removal And Installation | 22 |
| Disassembly And Assembly | 23 |
| HYDRAULIC DEPTH ADJUSTMENT MOTOR | |
| Removal And Installation | 29 |
| Disassembly And Assembly | 30 |
| MOUNTING BARS | |
| Removal And Installation | 25 |
| RUBBER SKIRT | |
| Removal And Installation | 31 |
| SKIS | |
| Removal And Installation | 32 |
| TROUBLESHOOTING THE PLANER | |
| Chart | 21 |

**PLANER
SERVICE**

HYDRAULIC DEPTH ADJUSTMENT MOTOR

Removal And Installation

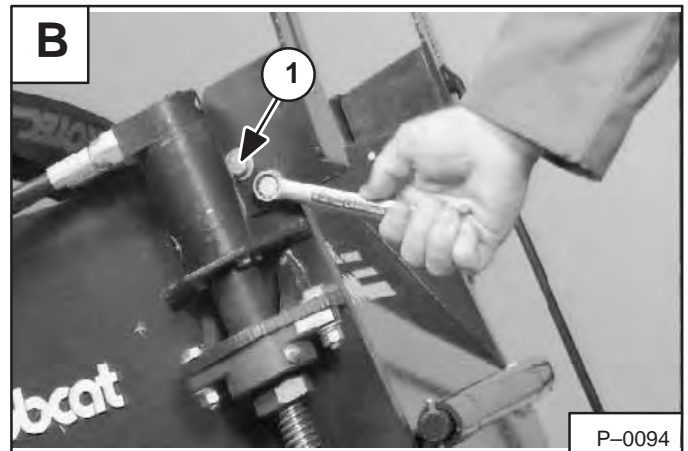
Disconnect the gauge rod from the ski [A].



Remove the bottom mounting bolt from the depth gauge bracket [B].

Loosen the top mounting bolt (Item 1) [B] on the depth gauge bracket and top the bracket back.

Installation: Tighten the mounting bolts to 25–28 ft.-lbs. (34–38 Nm) torque.



Loosen the top mounting bolt (Item 1) [B] on the depth gauge bracket and tip the bracket back.



Remove the motor from the coupler [D].

Disconnect the hoses from the motor.

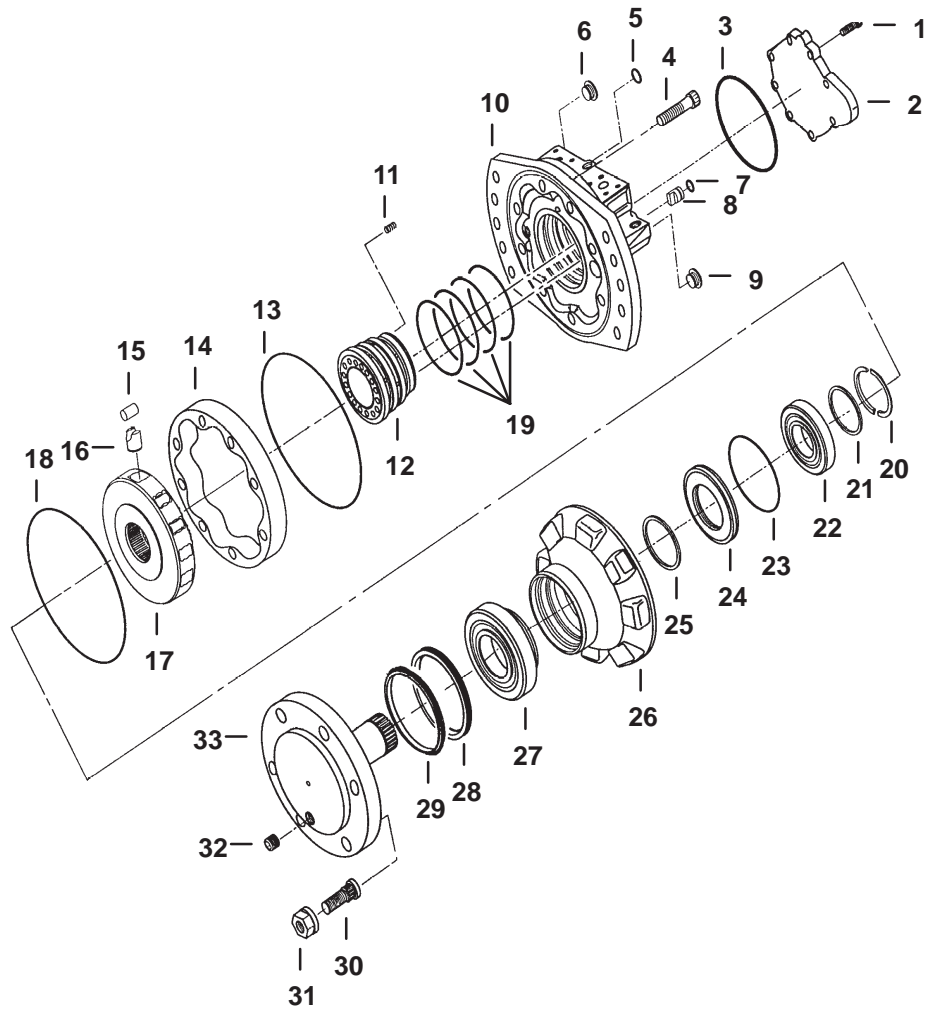
Remove the motor mounting bracket (Item 1) [D] by removing the three bolts that hold the bracket to the motor.



DRIVE MOTOR (Cont'd)

Parts Identification

- 1 Bolt
- 2 Cover
- 3 O-ring
- 4 Cap Screw
- 5 O-ring
- 6 Plug
- 7 O-ring
- 8 Stop Pin
- 9 Plug
- 10 Rear Housing
- 11 Spring
- 12 Distributor Block
- 13 O-ring
- 14 Cam Ring
- 15 Roller
- 16 Piston
- 17 Cylinder Block
- 18 O-ring
- 19 Seal
- 20 Split Ring
- 21 Washer
- 22 Rear Bearing
- 23 O-ring
- 24 Seal Retainer
- 25 Shaft Seal
- 26 Front Housing
- 27 Front Bearing
- 28 Face Seal
- 29 Face Seal
- 30 Stud
- 31 Nut
- 32 Plug
- 33 Shaft



CLICK HERE TO **DOWNLOAD** THE COMPLETE MANUAL

- Thank you very much for reading the preview of the manual.
- You can download the complete manual from: www.heydownloads.com by clicking the link below



- Please note: If there is no response to CLICKING the link, please download this PDF first and then click on it.

CLICK HERE TO **DOWNLOAD** THE COMPLETE MANUAL