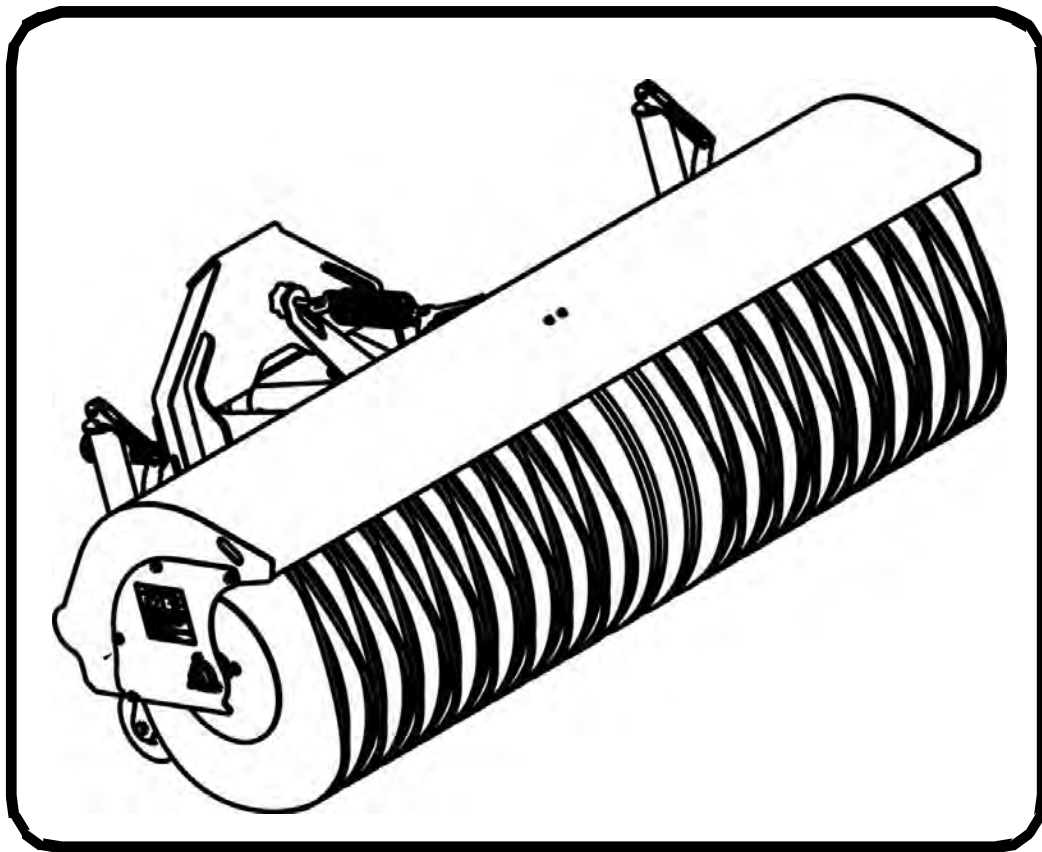




Bobcat®

Operation & Maintenance Manual Front Mount Angle Broom

(FMAB54) S/N B22M00101 & Above
(FMAB70) S/N B1CZ00101 & Above



CLICK HERE TO **DOWNLOAD** THE COMPLETE MANUAL

- Thank you very much for reading the preview of the manual.
- You can download the complete manual from: www.heydownloads.com by clicking the link below



- Please note: If there is no response to CLICKING the link, please download this PDF first and then click on it.

CLICK HERE TO **DOWNLOAD** THE COMPLETE MANUAL

SAFETY AND TRAINING RESOURCES

SAFETY INSTRUCTIONS	11
Safe Operation Is The Operator's Responsibility	11
Safe Operation Needs A Qualified Operator	11
Use Safety Rules	12
Call Before You Dig	12
Avoid Silica Dust	12
Safety Rules For Power Take-Off (PTO) Driven Attachments	13
Machine Requirements And Capabilities	13
FIRE PREVENTION	14
Maintenance	14
Operation	14
Electrical	14
Hydraulic System	14
Fueling	14
Starting	14
Spark Arrester Exhaust System	14
Welding And Grinding	15
Fire Extinguishers	15
PUBLICATIONS AND TRAINING RESOURCES	16
ATTACHMENT SIGNS (DECALS)	17

OPERATING INSTRUCTIONS

DAILY INSPECTION	21
Front Mount Frame	21
PTO Driveline	21
Front Mount Frame	22
OPERATING PROCEDURE WITH UTILITY VEHICLES	23
Approved Utility Vehicle Models And Requirements	23
Entering And Exiting The Utility Vehicle	24
Installation	26
Power Take-Off (PTO)	29
Hydraulic Quick Couplers	32
Control Functions	33
Control Functions For PTO	35
Operation With The Utility Vehicle	37
Removal	41
LIFTING THE ATTACHMENT	43
Procedure	43
TRANSPORTING THE ATTACHMENT ON A TRAILER	44
Fastening	44
TRANSPORTING THE ATTACHMENT AND MACHINE ON A TRAILER	46
Loading And Fastening	46

OPERATING PROCEDURE WITH UTILITY VEHICLES (CONT'D)

Power Take-Off (PTO)

Installation

The utility vehicle PTO must be installed to operate this attachment.

Install the front mount attachment on the utility vehicle. (See Installation on Page 26.)

Always park on flat level ground. Fully lower the front mounting frame and put the attachment flat on the ground.

Stop the engine and exit the utility vehicle. (See Entering And Exiting The Utility Vehicle on Page 24.)

Make sure the PTO driveline and all rotating components have come to a complete stop before exiting the utility vehicle.

WARNING

AVOID INJURY OR DEATH

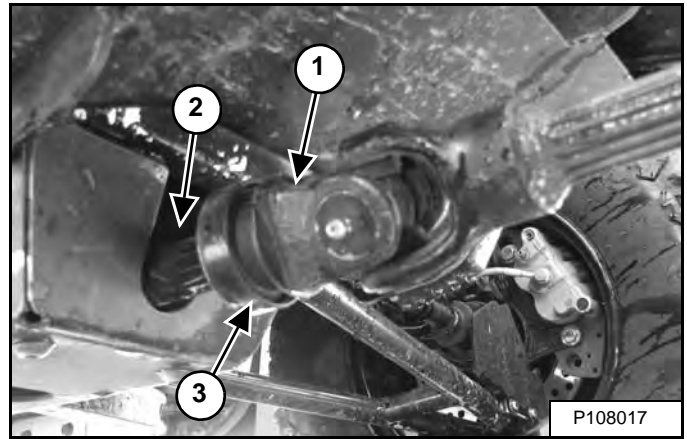
Before leaving the operator seat:

- Park on flat level ground.
- Lower the attachment arm, put the attachment flat on the ground (if equipped).
- Press the brake and put the gear selector in PARK.
- Stop the engine and remove the key.

SEE THE MACHINE OPERATION & MAINTENANCE MANUAL FOR MORE INFORMATION.

W-2944-0812

Figure 18



Connect the attachment PTO shaft (Item 1) to the PTO shaft (Item 2) [Figure 18].

Retract the collar (Item 3) and slide the attachment PTO driveline onto the utility vehicle PTO shaft (Item 2) [Figure 18]. Release the collar and the driveline will lock onto the PTO shaft. Push and pull the PTO driveline back and forth several times and make sure it is securely attached to the PTO shaft.

NOTE: The PTO driveline must have a means to retain it to both the utility vehicle and attachment PTO shafts.

WARNING

AVOID INJURY OR DEATH

- Keep PTO shield and all guards in place.
- Keep away from moving parts.
- Keep bystanders away.
- Do NOT exceed 2000 PTO RPM.

W-2668-0707

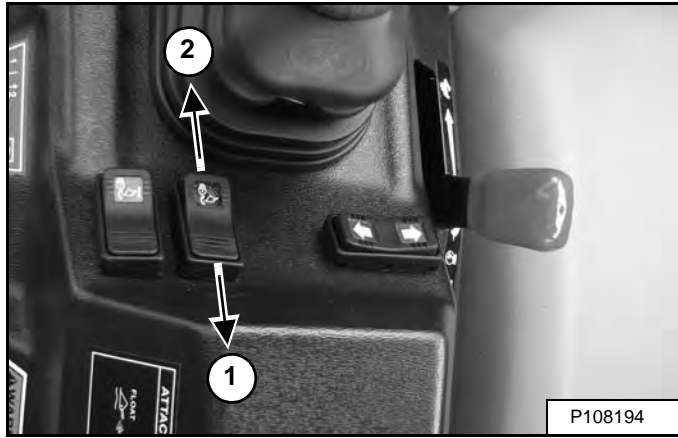


OPERATING PROCEDURE WITH UTILITY VEHICLES (CONT'D)

Operation With The Utility Vehicle (Cont'd)

Operating The Front Mount Attachment (Cont'd)

Figure 30



Press the tilt lock switch forward (Item 1) [Figure 26] to engage the tilt lock.

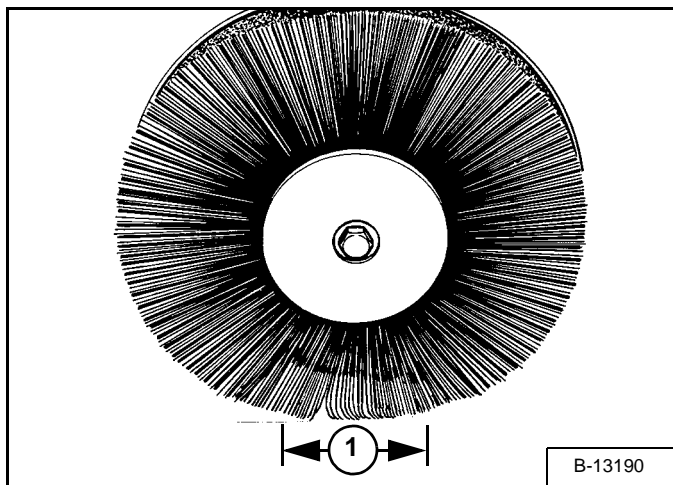
IMPORTANT

AVOID PTO DRIVELINE DAMAGE

PTO powered attachments are not compatible with the tilt cylinder full range of motion. Engage the tilt cylinder lock once the attachment is leveled to prevent PTO driveline damage.

I-2372-0313

Figure 31



For General Sweeping: A 76 - 127 mm (3 - 5 in) (Item 1) [Figure 31] pattern is recommended for ground contact and allows the tips, or ends of the bristles, to dig and break up the debris then throw the debris off the swept surface.

For Snow Removal: A 127 - 178 mm (5 - 7 in) (Item 1) [Figure 31] pattern is recommended for ground contact and allows the tips, or ends of the bristles, to dig and break up the snow then throw the snow off the swept surface.

Excessive down pressure can result in the following problems which will reduce broom performance:

1. Adverse bristle deflection resulting in accelerated bristle wear.
2. Bristles become stressed and break off at the ring.

NOTE: Minimize dust by reducing brush bristle speed. It is recommended to sweep on days the ground is wet.

MAINTENANCE SAFETY



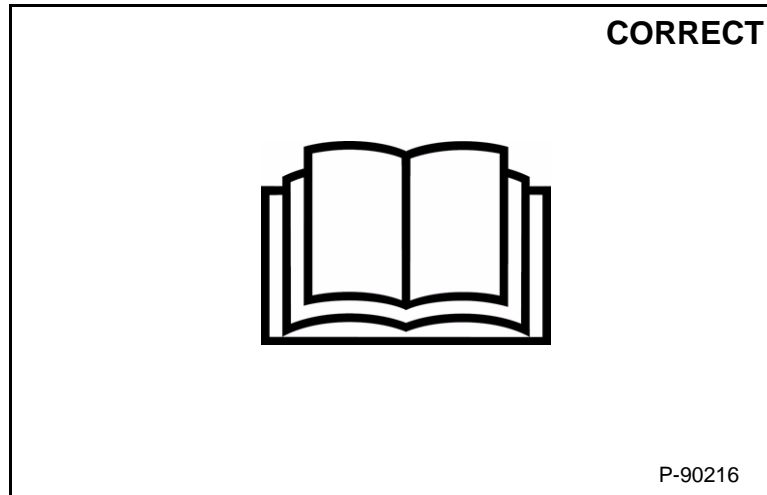
WARNING









Instructions are necessary before operating or servicing machine. Read and understand the Operation & Maintenance Manual, Operator's Handbook and signs (decals) on machine. Follow warnings and instructions in the manuals when making repairs, adjustments or servicing. Check for correct function after adjustments, repairs or service. Untrained operators and failure to follow instructions can cause injury or death.

W-2003-0807



Safety Alert Symbol: This symbol with a warning statement, means: "Warning, be alert! Your safety is involved!" Carefully read the message that follows.



-  **Never service attachments / implements without instructions. See Operation & Maintenance Manual and Attachment / Implement Service Manual.**
-  **Cleaning and maintenance are required daily.**
-  **Never service or adjust attachment / implement with the engine running unless instructed to do so in manual.**
-  **Always lower the attachment / implement to the ground before lubricating or servicing.**
-  **Avoid contact with leaking hydraulic fluid or diesel fuel under pressure. It can penetrate skin or eyes.**
-  **Stop, cool and clean engine of flammable materials before checking fluids.**
-  **Keep body, loose objects and clothing away from moving parts, electrical contacts, hot parts and exhaust.**
-  **Safety glasses are needed for eye protection from electrical arcs, battery acid, compressed springs, fluids under pressure and flying debris or when tools are used. Use eye protection approved for type of welding.**

MSW30-0409

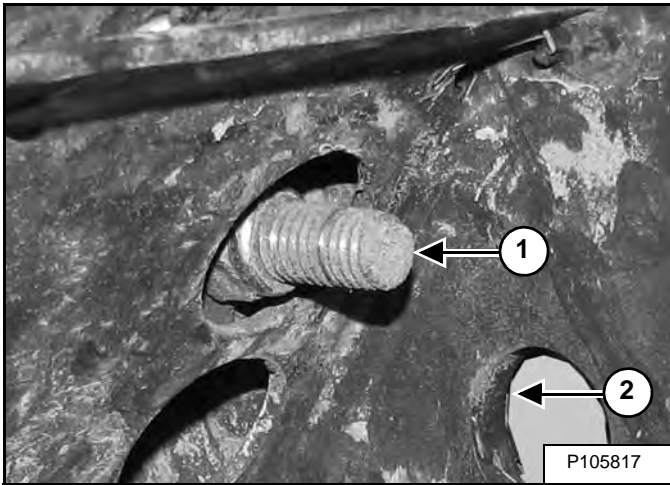
REMOVAL AND INSTALLATION OF SHEAR BOLT (CONT'D)

Procedure(s) (Cont'd)

Bristle Shaft Shear Bolt

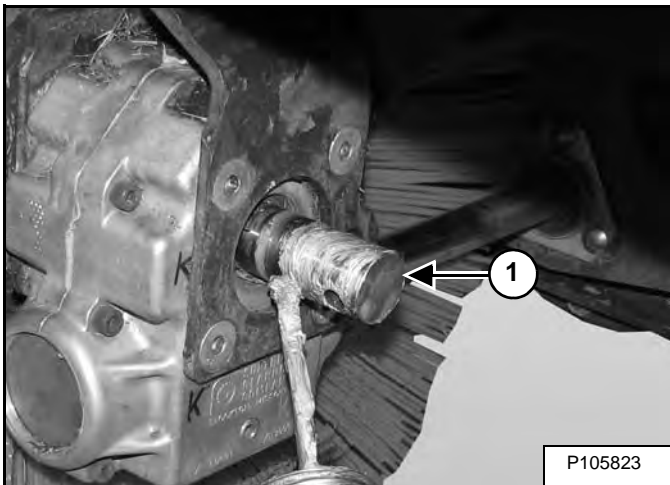
Remove the bristles from the side the shear bolt is being replaced. (See REMOVAL AND INSTALLATION OF BRISTLES on Page 55.)

Figure 62



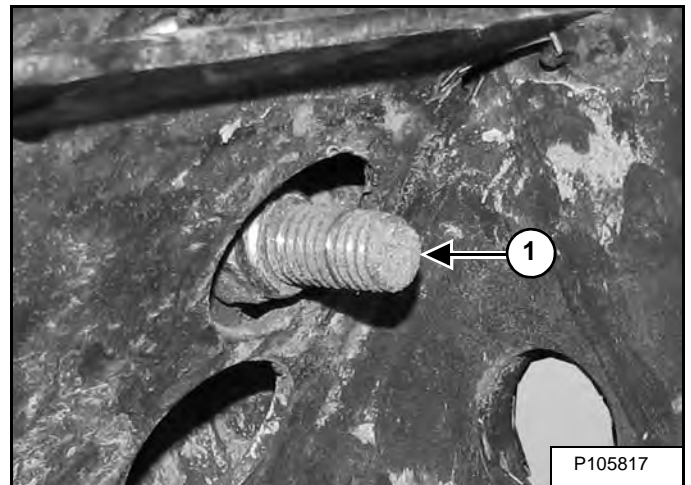
Remove the shear bolt (Item 1) and bristle shaft (Item 2) [Figure 62].

Figure 63



Remove the bristle shaft, apply anti-seize to the output shaft (Item 1) [Figure 63] of the gearbox. Reinstall bristle shaft.

Figure 64



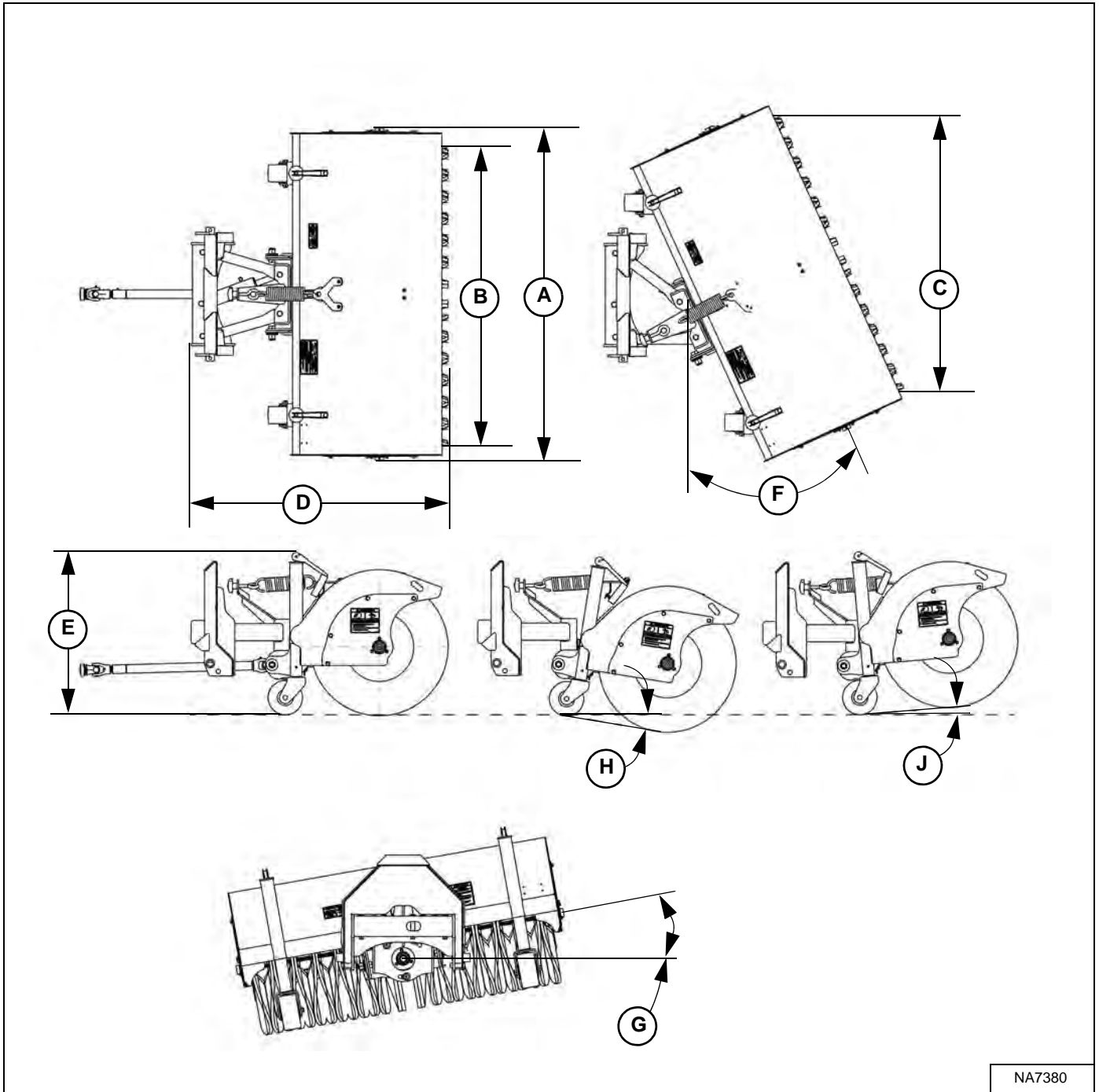
Install the shear bolt and nut (Item 1) [Figure 64]. Tighten to 81,3 N•m (60 ft-lb) torque.

Install the bristles on the side the shear bolt is being replaced. (See REMOVAL AND INSTALLATION OF BRISTLES on Page 55.)

(FMAB54 AND FMAB70) FRONT MOUNT ANGLE BROOM SPECIFICATIONS

Dimensions

- Where applicable, specifications conform to **SAE and ISO** standards and are subject to change without notice.



CLICK HERE TO **DOWNLOAD** THE COMPLETE MANUAL

- Thank you very much for reading the preview of the manual.
- You can download the complete manual from: www.heydownloads.com by clicking the link below



- Please note: If there is no response to CLICKING the link, please download this PDF first and then click on it.

CLICK HERE TO **DOWNLOAD** THE COMPLETE MANUAL