

2

0

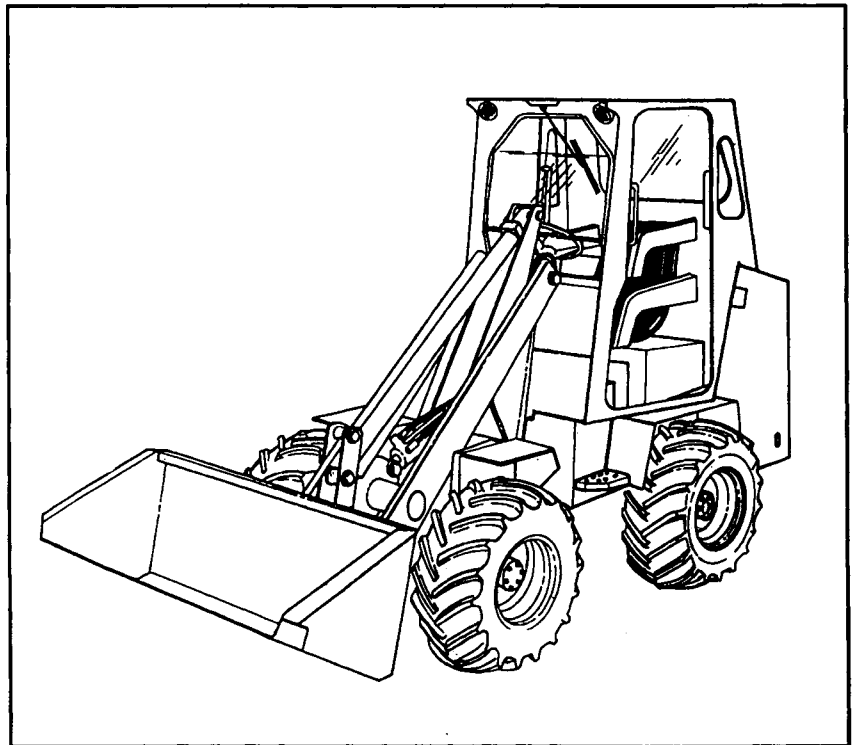
0

0



Operation & Maintenance Manual

(S/N 13061 & Above)



MELROE
INGERSOLL-RAND

6566671 (10-87) Revised (9-96)

Printed in U.S.A.



© Melroe Company 1996

CLICK HERE TO **DOWNLOAD** THE COMPLETE MANUAL

- Thank you very much for reading the preview of the manual.
- You can download the complete manual from: www.heydownloads.com by clicking the link below



- Please note: If there is no response to CLICKING the link, please download this PDF first and then click on it.

CLICK HERE TO **DOWNLOAD** THE COMPLETE MANUAL

Cold Temperature Starting


If the starting temperature is below 32°F. (0°C.), use the following procedures to make it easier to start the engine.

- a. Replace the engine oil with the correct type and viscosity for the anticipated starting temperature (See the "Specifications" Section of this Operator's Manual).
 - b. Make sure that the batteries are fully charged.
1. Follow steps 1 thru 6 under "Starting the Engine" (Page 9) and repeat steps 5 and 6 until the engine starts.

IMPORTANT	<p>When the temperatures are below -20°F. (-30°C.), hydrostatic oil must be kept warm. The hydrostatic system will not get enough oil at low temperatures. This will cause damage to the loader. Park the Bobcat loader in an area where the temperature will be above 0°F. (-18°C.) if possible.</p> <p style="text-align: right;">I-2007-0284</p>
------------------	---

2. Let the engine run for a minimum of five (5) minutes to warm the engine and the hydrostatic oil before operating the loader. During very cold temperatures of (0°F. [-23°C] & Below), let the engine run for longer than 5 minutes before operating the loader.
3. If the transmission warning light comes "ON" when operating the loader, more warm-up time is needed.


ATTACHMENTS AND BUCKETS

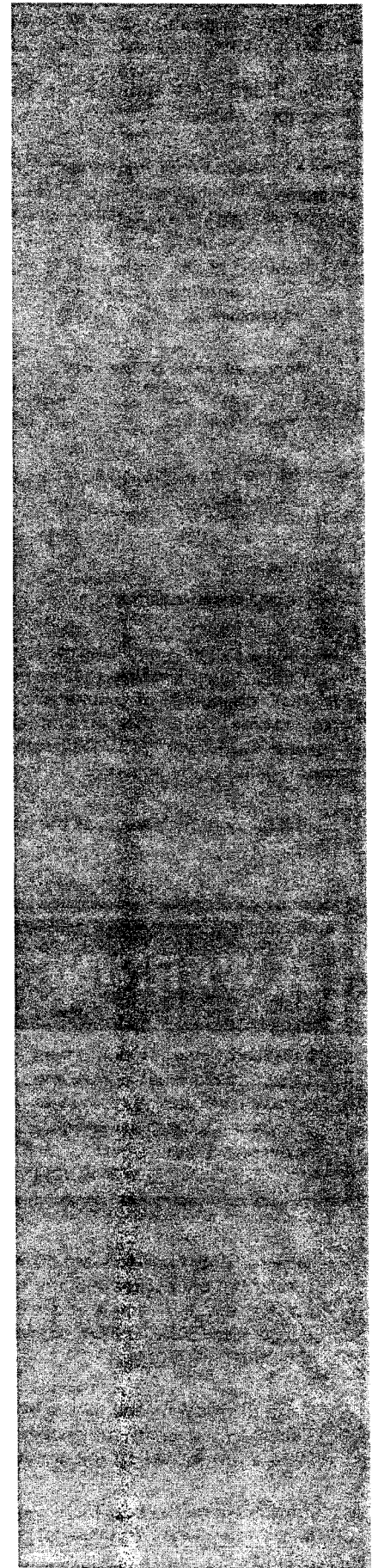
 WARNING	<p>Never use attachments or buckets which are not approved by Clark Equipment Co., Melroe Division. Buckets and attachments for safe loads of specified densities are approved for each model of loader. Failure to obey warnings can cause injury or death.</p> <p style="text-align: right;">W-2052-0284</p>
--	--

The dealer can identify, for each model of loader, the attachments and buckets approved by Clark Equipment Co., Melroe Division. The attachments and buckets are approved for the Rated Operating Capacity and for secure fastening of the attachment and bucket to the Bob-Tach frame.

For safe handling of materials, without damage to the loader, the attachment or bucket must not be too big to handle a full load without going over the Rated Operating Capacity for the loader. For most efficient use of the loader, carry loads which are as near as possible to the Rated Operating Capacity for the loader.

It is important for efficiency and safety, to use the correct size attachment for the type of material being handled.

 WARNING	<p>Do not exceed rated operating capacity of loader. Excessive load can cause loss of control because it will decrease stability and handling response. Failure to obey warnings can cause injury or death.</p> <p style="text-align: right;">W-2053-0284</p>
--	---



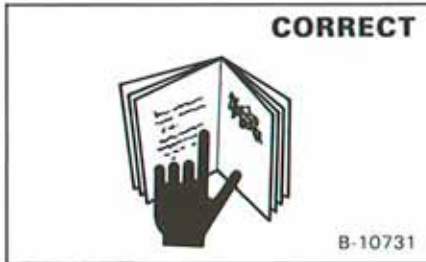
MAINTENANCE SAFETY

WARNING

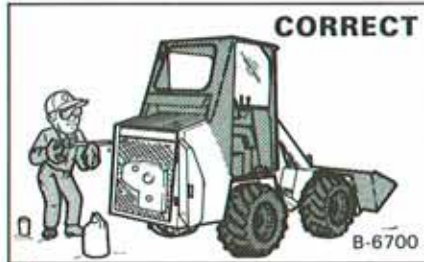
Instructions are necessary before doing service on loader. See warnings and instructions both at beginning and throughout this manual. After doing service or making repair or adjustment, always check function of loader. Failure to obey warnings can cause injury or death.

W-2048-0284

⚠ Safety Alert Symbol This symbol is used for important safety messages. When you see this symbol, follow the safety message to avoid personal injury or death.



⚠ Never service the Bobcat loader without instructions. See Service Manual.



⚠ Check engine and hydraulic fluids daily.
⚠ Use recommended fluids.



⚠ Clean and maintenance are required daily.
⚠ Keep rear door closed except for service. Close and latch door before operating loader.



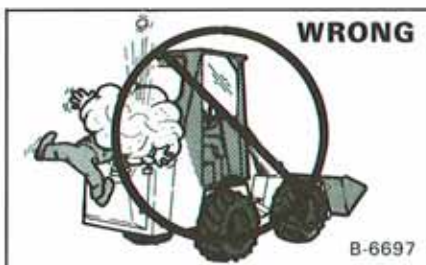
⚠ Do not fill the fuel tank with engine running, while smoking or when near an open flame.



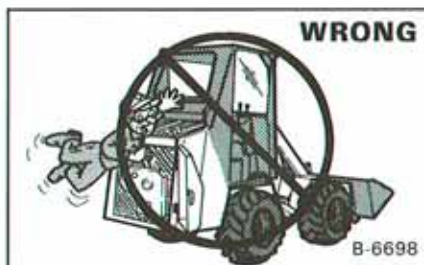
⚠ Always connect steering frame lock before working on the loader.



⚠ Never work on loader with lift arms up unless supported by a lift arm stop.
⚠ Never modify equipment or add attachments not approved by Melroe Company.



⚠ Stop, cool and clean engine of flammable materials before checking fluids.
⚠ Never service or adjust loader with the engine running unless instructed to do so in the manual.
⚠ Avoid contact with leaking hydraulic fluids or diesel fuel which is under pressure. It can penetrate the skin or eyes.



⚠ Keep body, loose objects and clothing away from moving parts, electrical contacts, hot parts and exhaust.
⚠ Safety glasses or goggles are always needed for eye protection. from electrical arcs from shorts or welding, battery acid, compressed springs, fluids under pressure and flying debris or loose material when engines are running or tools are used. Use eye protection approved for type of welding.



⚠ Lead-acid batteries produce flammable and explosive gases.
⚠ Keep arcs, sparks, flames and lighted tobacco away from batteries.
⚠ Lead-acid batteries contain sulfuric acid which will damage eyes or skin on contact. If acid contacts eye, skin or clothing, flush well with water. For contact with eyes, get immediate medical attention.

WARNING

Do not "jump" start an engine with a frozen battery, or charge a frozen battery, because it can explode.

A battery with a low charge has weaker acid which can freeze. Let battery warm to 60°F. (16°C.) before connecting to a battery charger. Failure to obey warnings can cause injury or death.

W-2076-0284

5. Connect the end of the first cable to the positive terminal (+) of the booster battery. Connect the other end of the same cable to the positive terminal (+) of the machine battery (Fig. 72).

NOTE: Figure 72 does not show the batteries as they are located in the loader.

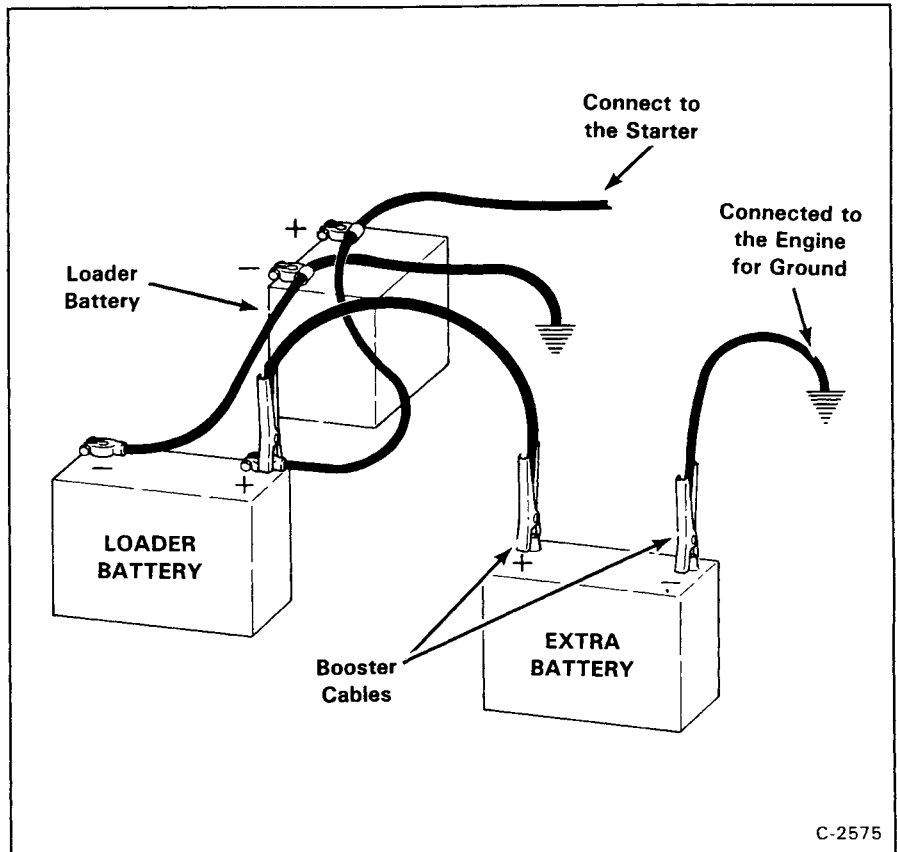


Fig. 72 Connecting the Extra Battery

C-2575

6. Connect the end of the second cable to the negative terminal (–) of the booster battery. Connect the other end of the second cable to the engine. DO NOT connect the cable directly to the negative terminal (–) of the machine battery. Connecting the cable directly to the negative terminal (–) of the machine battery can cause a spark and destroy the battery and cause personal injury.
7. Keep the cables away from the fans and belts.

NOTE: The operator must be in the operator's seat and have the seat belt fastened.

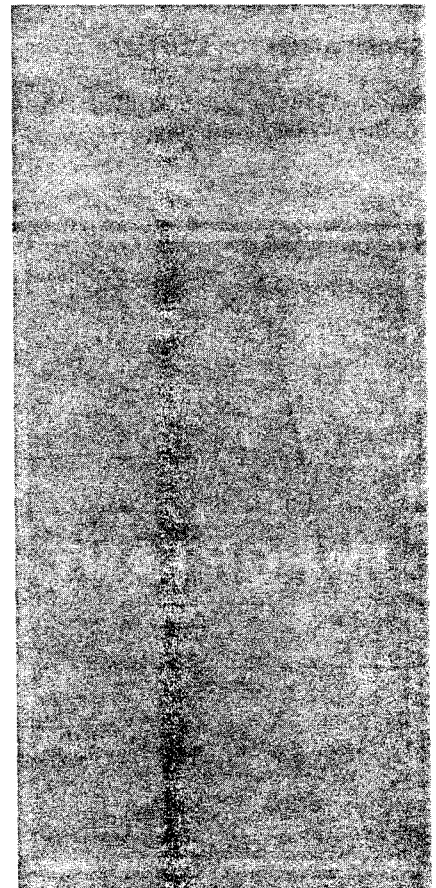
8. Start the engine.
9. After the engine has started, remove the cable connected to the engine.
10. Then remove the cable from the machine battery post positive terminal (+).
11. Install the rubber covers over the battery terminals.

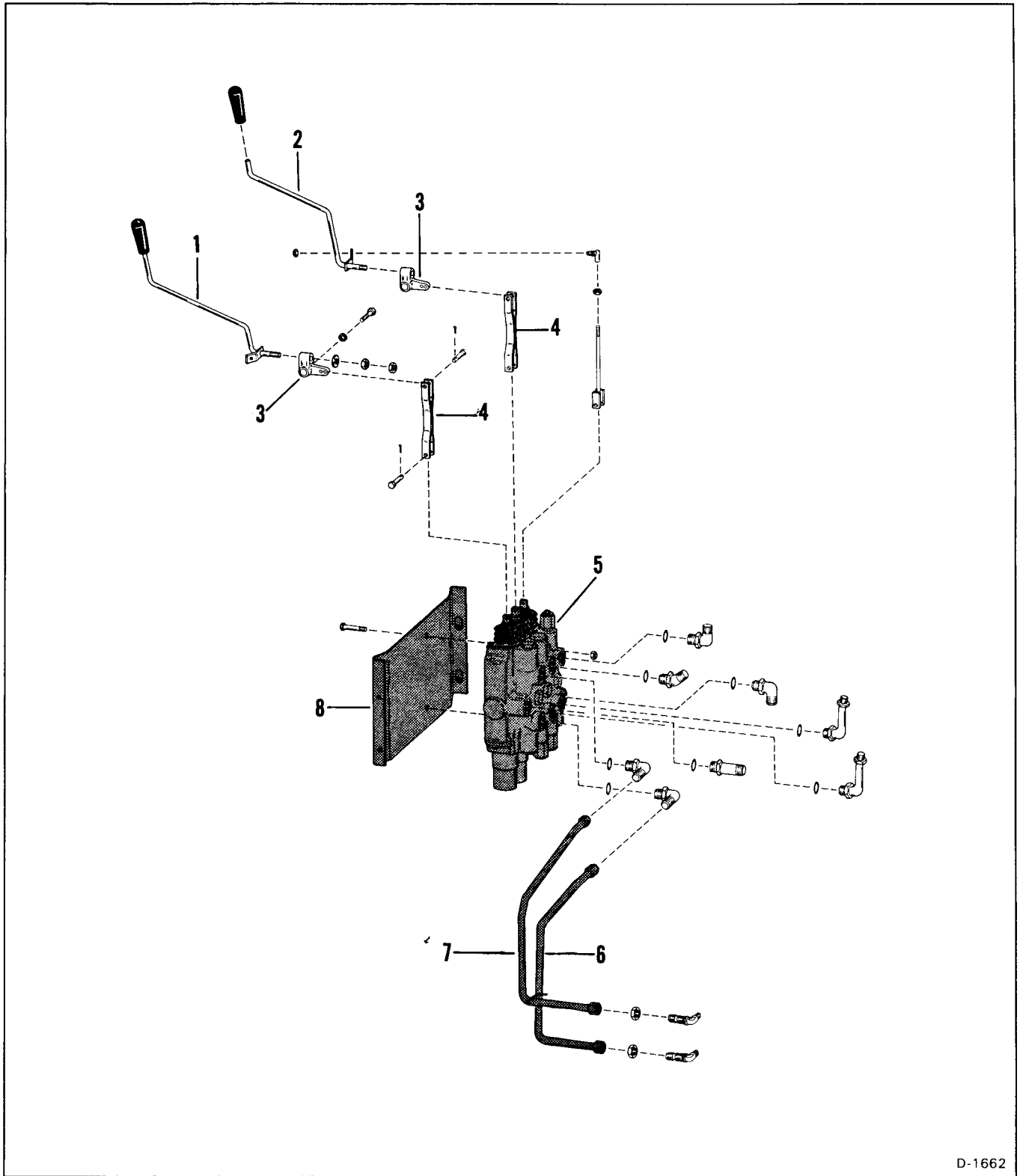
IMPORTANT

Damage to alternator can occur if:

1. Engine is operated with battery cables disconnected.
2. Cables are connected when using a fast charger or when welding on the loader (Remove both cables from the battery.).
3. Extra battery cables (booster cables) are connected wrong.

I-2023-0284





D-1662

HYDRAULIC SYSTEM

Ref.	Description	Ref.	Description
1.	Lever	5.	Valve
2.	Lever	6.	Tube
3.	Block	7.	Tube
4.	Linkage	8.	Mount

SERVICE SCHEDULE

EVERY 8-10 HOURS

1. Engine Oil — check & add lubricant as needed. Do not overfill.*
2. Engine Air System — check for leaks & damaged components. Replace air cleaner element when condition indicator shows red.
3. Engine Cooling System — clean debris from cooling fins, shrouds & grills. Check coolant level & add as needed.*
4. Tires — check for damage & correct air pressure:
10 x 16.5 - 50 PSI (345 kPa) front, 40 PSI (276 kPa) rear.
31 x 15.5 x 15 - 35 PSI (241 kPa) front, 20 PSI (138 kPa) rear.
5. Pivot Points — grease bob-tach, bucket link, transfer link, lift cylinder, tilt cylinder & lift arm pivots with multipurpose lithium grease (11). Grease front steering cylinder, front articulation joint & oscillation joints with approved grease (4).*
6. Seat Belt and Seat Bar — check function of seat belt & bar. Repair as needed before using loader.
7. General — check for loose or broken parts, instrument operation, loose wheel nuts, oil leaks, hose or tube line damage, etc.

EVERY 50 HOURS

1. Engine Oil — change oil & filter.*
2. Hydraulic System — check level & add fluid as needed.*
3. Control Pedal, Steering and Brake — check condition & operation. Adjust as needed.
4. Bob-Tach — check locking levers & wedges for condition & operation.
5. Pivot Points — grease rear steering cylinder & rear articulation joint with approved grease (2).*
6. Water Trap — remove trapped water.
7. Batteries — check water level & cables.
8. V-Belt — check tension & adjust as needed.
9. Machine Signs (Decals) — replace missing or damaged signs.*

EVERY 100 HOURS

1. Hydraulic System — replace oil filters (L.H. filter must be changed sooner if panel light remains on for five (5) minutes after hydraulic oil is at operating temperature.)
2. Drive Shaft U-Joints — grease with approved grease (3).*
3. Spark Arrestor Muffler — empty spark chamber.*

EVERY 250 HOURS

1. Engine To Pump U-Joints — grease u-joints with approved grease (2).*
2. Front and Rear Differentials — check & add lubricant as needed to maintain at plug level.
3. Fuel Filter — replace filter element & clean sediment bowl.

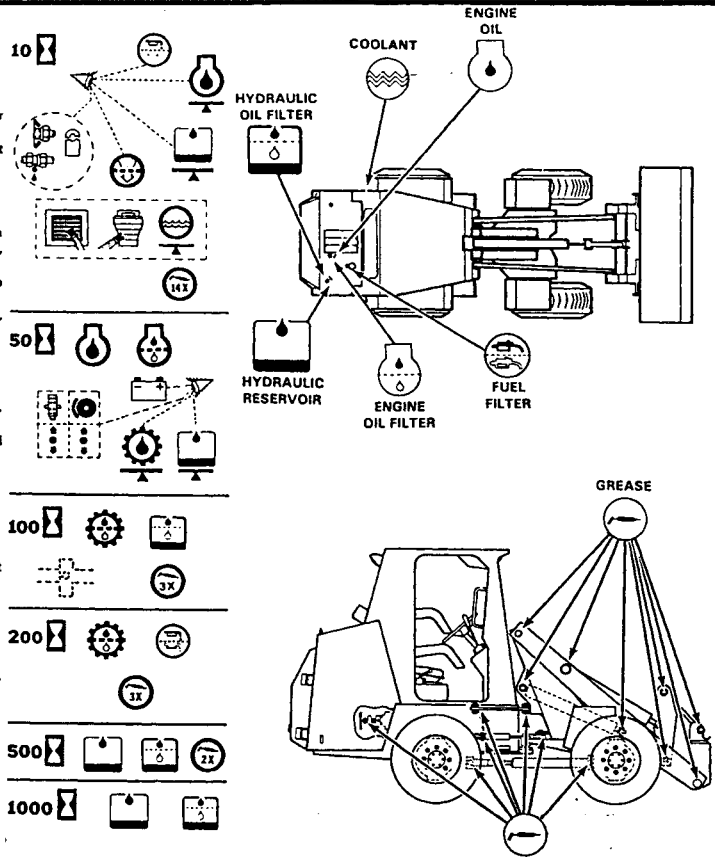
EVERY 500 HOURS

1. Hydraulic System — replace bronze filter. Clean cap & vent.*

EVERY 1000 HOURS

1. Hydraulic System — drain reservoir. Replace fluid & filter.

* See Operator's Manual for more instructions.
Weitere Instruktionen sind in der Bedienungsanleitung.
Consulte el Manual del Operador por mas instrucciones.
Se reporter au manual de l'opérateur pour plus enseignements.



6584441

WARTUNGSTABELLE (GERMAN)

ALLE 10 BETRIEBSSTUNDEN

1. Motoröl — Ölstand prüfen—nicht überfüllen (siehe Betriebsanleitung für zugelassene Ölsorten).
2. Luftfilter — Anzeige prüfen—Filter wechseln, falls nötig.
3. Kühlanlage — Kühlernetz, Verkleidungen und Kühlergrill reinigen—Kühlmittelstand kalt prüfen—falls nötig, je 50% Wasser und Athylglykol nachfüllen.
4. Schmierstellen — Bob-Tach-Kuppler, Schaufelgestänge, Umlegegestänge, Hubzylinder, Kippzylinder, Knicklager, Achsschwenklager, vorderer Lenkzylinder, Hubarmschwenkzapfen. Mit Mehrzweckschmierfett auf Lithiumbasis abschmieren (14).
5. Reifen — Reifendruck prüfen—Standardreifen (schmal/ 10 x 16.5 x 15, vorne 345 kPa, hinten 275 kPa. Breitreifen (Zusatzausrüstung) 31 x 15.5 x 15 vorne 240 kPa, hinten 140 kPa.
6. Luftansaugung — auf Lecks und Schäden prüfen.
7. Allgemeine Wartung — auf lose oder schadhafte Teile, schadhafte Sitzgurte und Fahrerschutz, betriebsbereite Anzeigen, lose Radmuttern Öllecks u.s.w. prüfen.
8. Kraftstofffilter — Kondenswasser ablassen.
9. Hydraulikflüssigkeit — Stand prüfen (siehe Betriebsanleitung für zugelassene Flüssigkeiten).

ALLE 50 BETRIEBSSTUNDEN

1. Motoröl — warm ablassen und Filter wechseln. Mit richtigem Öl füllen (siehe Betriebsanleitung für vorgeschriebene Ölsorten).
2. Batterie — Zustand prüfen.

3. Bedienungen und Bremsen — Betriebsfähigkeit prüfen, nachstellen, falls nötig.
4. Riemen — Lichtmaschinenriemen auf Spannung und Zustand prüfen.

ALLE 100 BETRIEBSSTUNDEN

1. Hydraulikanlage — rechten Filter wechseln.
2. Funkenfänger-Auspuff — Funkensammler ausleeren.
3. Kreuzgelenke der Antriebswelle — Mit mehrzweckschmierfett auf Lithiumbasis abschmieren (3).

ALLE 200 BETRIEBSSTUNDEN

1. Kraftstoff-Hauptfilter — Filter wechseln.
2. Kraftstodd-Vorfilter — Sammelschale reinigen.
3. Differentialöl — Ölstand prüfen und auf Füllstopfenhöhe nachfüllen, falls nötig. (siehe Betriebsanleitung für zulässige Ölsorten).
4. Schmierstellen — Lenkzylinder-hinten, Achsschwenklager-hinten, mit Mehrzweckschmierfett auf Lithiumbasis abschmieren (2).
5. Pumpenantriebswelle — Kreuzgelenk mit zulässigem Schmierfett abschmieren (3). Siehe Betriebsanleitung für zulässige Schmiermittel.

ALLE 500 BETRIEBSSTUNDEN

1. Hydraulikanlage — Bronzefilter auswechseln.

ALLE 1000 BETRIEBSSTUNDEN

1. Hydrauliktank — ablassen und neu füllen (siehe Betriebsanleitung für zugelassene Flüssigkeiten).

CLICK HERE TO **DOWNLOAD** THE COMPLETE MANUAL

- Thank you very much for reading the preview of the manual.
- You can download the complete manual from: www.heydownloads.com by clicking the link below



- Please note: If there is no response to CLICKING the link, please download this PDF first and then click on it.

CLICK HERE TO **DOWNLOAD** THE COMPLETE MANUAL