



P.A. Construction Equipment Pty Ltd

5-7 Lorraine Street, Peakhurst NSW 2210. PO Box 377, Mortdale NSW 2223, Australia.
Phone (02) 9533 5411. Fax (02) 9533 5585. ABN 91 003 368 116

OPERATION & MAINTENANCE MANUAL

NEOX 26C MINI-CRAWLER CRANE MC-264HC

WARNING

Unsafe use of this machine may cause serious injury or death. Operators must read this manual before operating this machine. This manual should be kept near the machine for reference and periodically reviewed by all personnel who will come into contact with it.

MAEDA

CLICK HERE TO **DOWNLOAD** THE COMPLETE MANUAL

- Thank you very much for reading the preview of the manual.
- You can download the complete manual from: www.heydownloads.com by clicking the link below

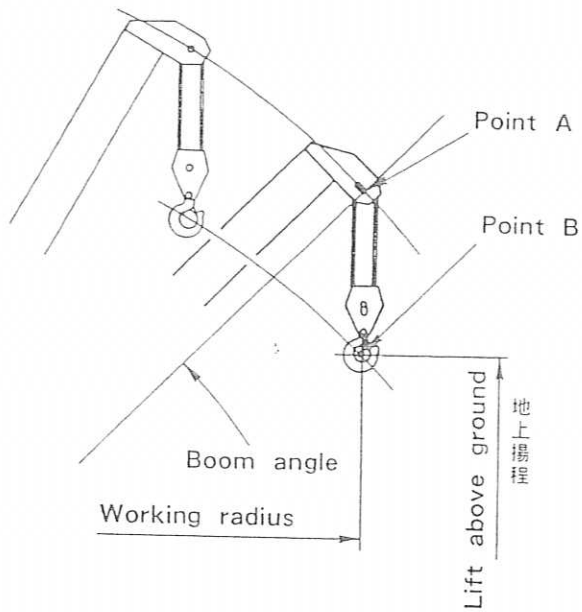


- Please note: If there is no response to CLICKING the link, please download this PDF first and then click on it.

CLICK HERE TO **DOWNLOAD** THE COMPLETE MANUAL

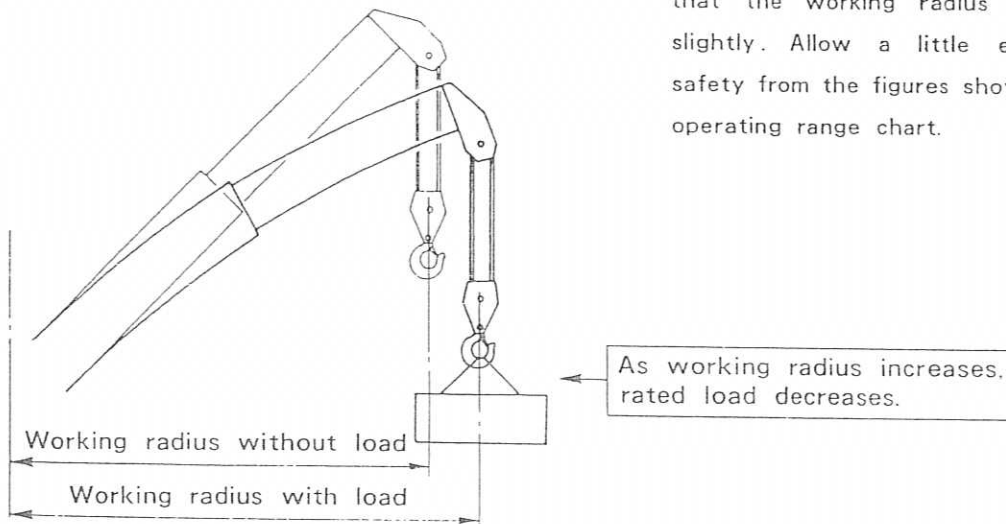
4) How to read Operating Range Chart and Rated Load Table

The operating range chart shows the working radius of the machine, and the relationship between boom angle and lift above ground.



Note : Point A indicates boom angle, and point B lift above ground. The working radius up to points A and B is the same.

Note : The operating range chart applies in cases where no load is lifted, and does not include boom deflections. If a load is lifted, the booms deflect so that the working radius increases slightly. Allow a little extra for safety from the figures shown in the operating range chart.



(7) Start

1. Starter motor

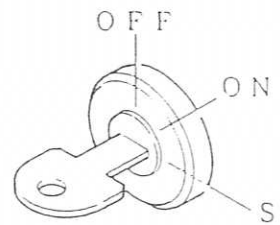
Turn the key switch clockwise to the start (S) position to start the engine. (Normally, the engine starts running in less than 3 seconds.)

If it is difficult to start the engine with the starter motor, use the recoil starter.

Notes : 1. If the key switch is kept in the start (S) position for longer than 5 seconds, the battery runs out fast.

If the engine does start in 5 seconds, turn the key switch back to the OFF position, and try again after a while.

2. If the engine does not start in the first try, repeat trying a few times. Always make sure that the engine is at a complete stop before trying.

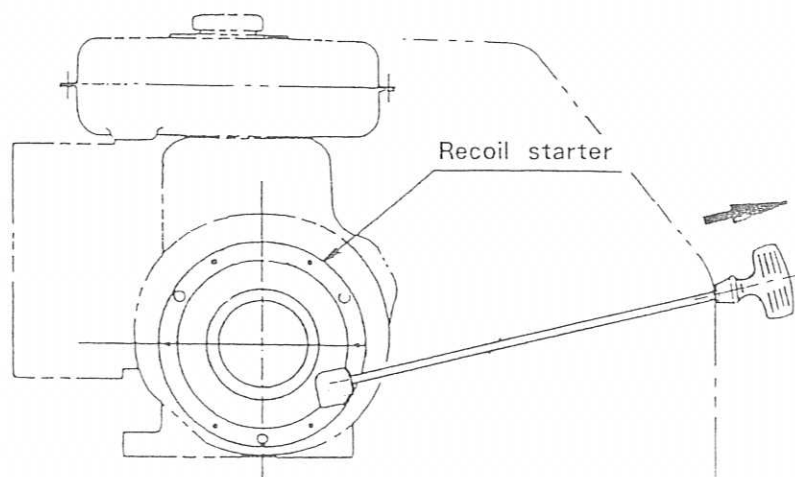


2. Recoil starter

Lightly pull the rope until you feel resistance, then release it all the way back, and pull it hard and fast.

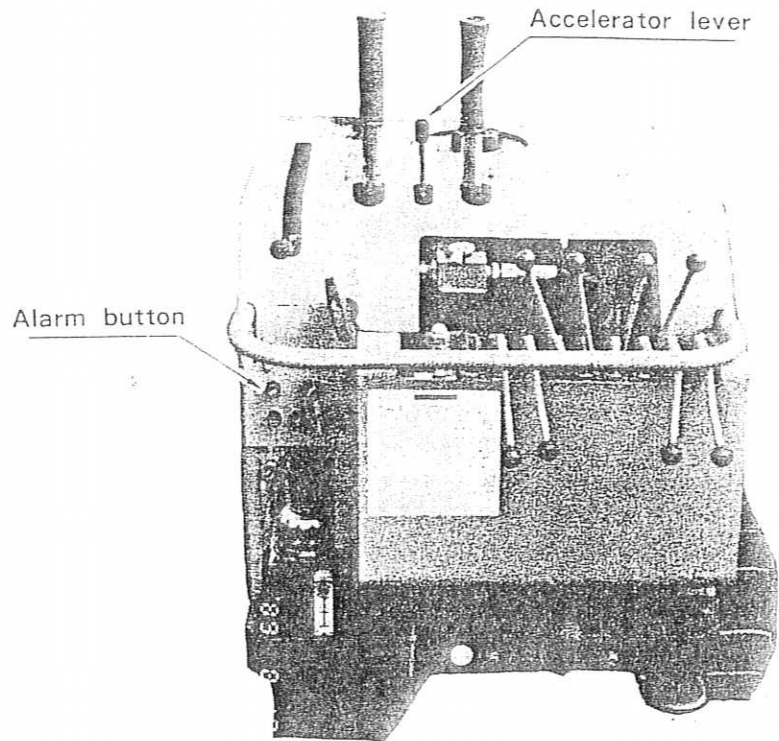
Note : If the engine does not start after trying about 3 times, push the choke back in. If you keep trying again without releasing the choke, too much fuel will be drawn in to make it even harder to start the engine. Also check that the key switch is in the ON position.

(8) After starting the engine, return the choke lever to the original position.

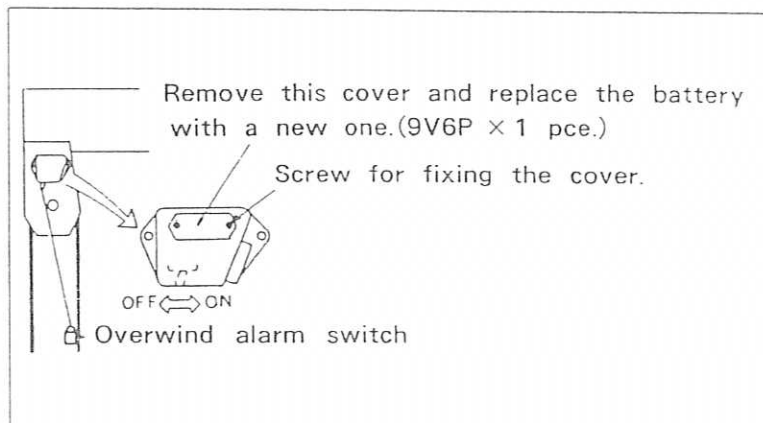


(8) Acceleration

Engine speed increases to raise operating speed when the accelerator lever is pulled toward yourself. When the lever is pushed to the original position (engine idling), operation slows down.



(9) Overwind alarm



Electronic sound, Battery replacement type

OperatingKeep the switch in the ON position.

RunningKeep the switch in the OFF position when driving the machine because the alarm may sound due to bouncing.

* If the switch is in the OFF position, the alarm will not operate even if the hook block is overwound. Be sure to set the switch to the ON position before starting operation.

(3) While pulling the wire rope hard, wind it on the rope drum. (Figure 5 - 7)

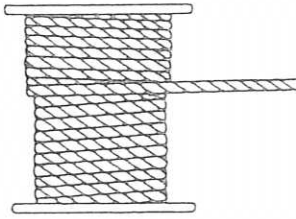


Figure 5 - 7

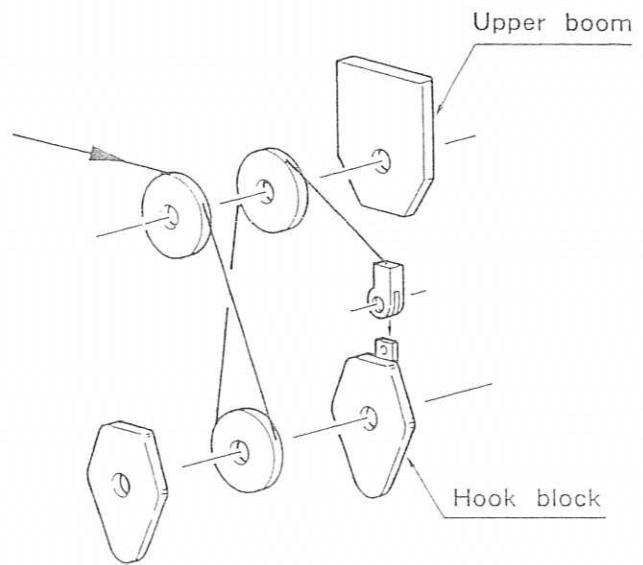
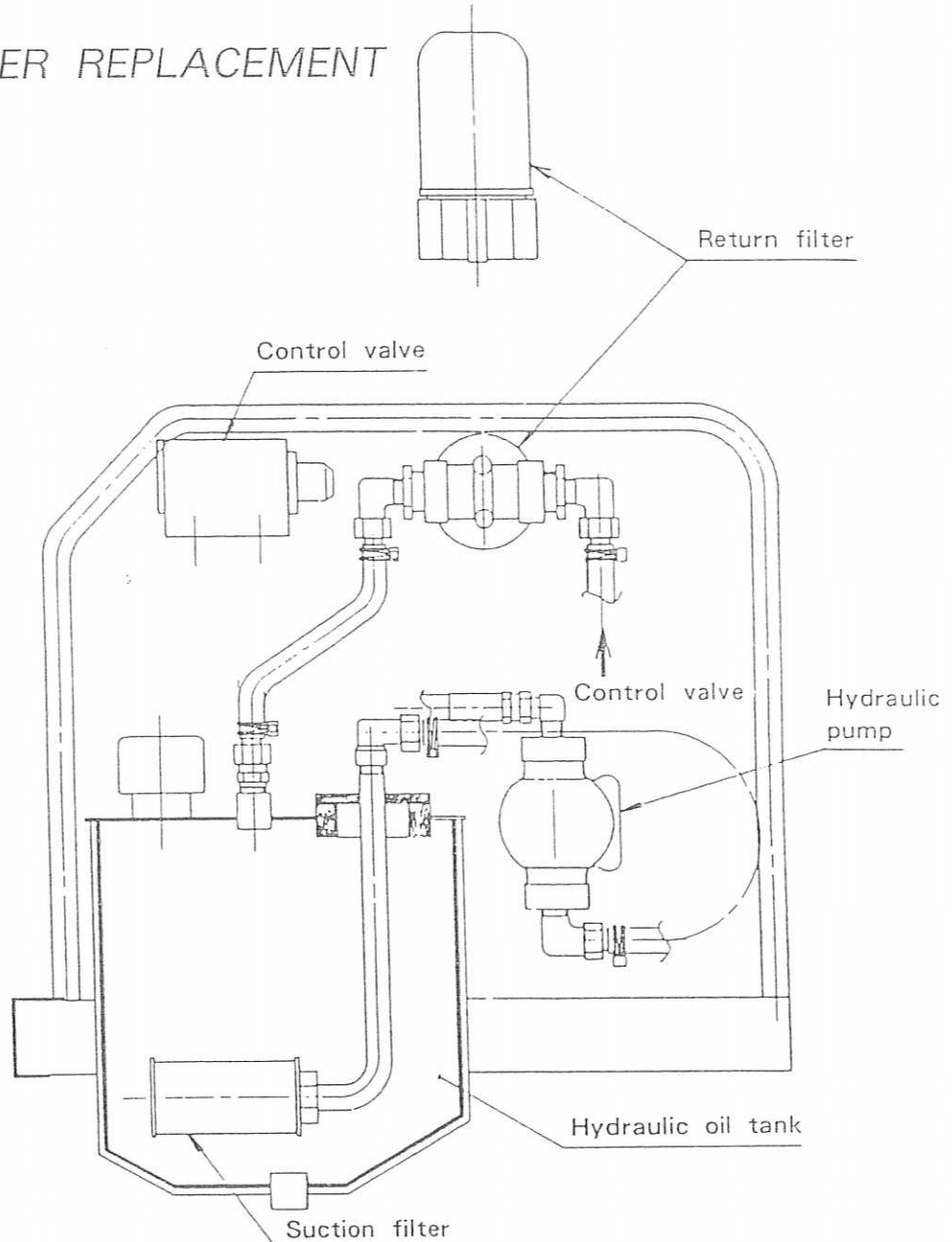


Figure 5 - 8

(4) Fasten the wire rope to the hook block as shown in Figure 5 - 8.

12. FILTER REPLACEMENT



When to replace filters (When to change hydraulic oil and to flush)

Return filter	10 microns	First time : 3 months after use Second time : 6 months after use
Suction filter	150 meshe	First time : 3 months after use Second time : One a year

Filter replacement varies depending on the length and frequency of crane operation. Contaminated hydraulic oil will clog up the filters and cause hydraulic pump failure. Be sure to replace the filters at the same time as regular hydraulic oil change or flushing.

(6) Alarm operation

To warn the people around the crane of its start of operation or danger, press the ALARM button on the remote controller.

(7) Emergency stop

If the crane fails to stop even though a remote control dial is released, or if the crane has started moving even though none of the remote control switches is turned, push the EMERGENCY STOP button on the remote controller to stop the crane. Once the crane is stopped by pressing the EMERGENCY STOP button, the crane will not work even with the manual levers.

Note : When the EMERGENCY STOP button is pressed, be sure to stop the engine, and then set the main switch to OFF.

If the EMERGENCY STOP button is accidentally pressed when the crane is operating normally, set the main switch to OFF, and back to ON again. The emergency stop is released and you can start crane operation again.

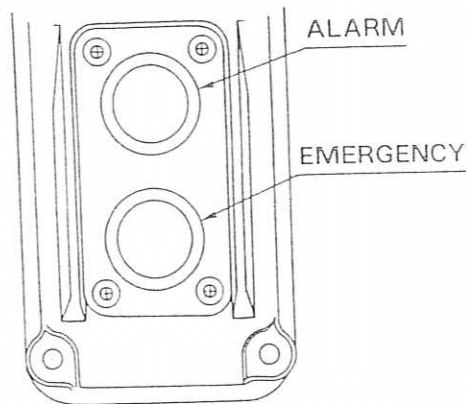


Figure 8

CLICK HERE TO **DOWNLOAD** THE COMPLETE MANUAL

- Thank you very much for reading the preview of the manual.
- You can download the complete manual from: www.heydownloads.com by clicking the link below



- Please note: If there is no response to CLICKING the link, please download this PDF first and then click on it.

CLICK HERE TO **DOWNLOAD** THE COMPLETE MANUAL