



Technical Manual

CLICK HERE TO **DOWNLOAD** THE COMPLETE MANUAL

- Thank you very much for reading the preview of the manual.
- You can download the complete manual from: www.heydownloads.com by clicking the link below



- Please note: If there is no response to CLICKING the link, please download this PDF first and then click on it.

CLICK HERE TO **DOWNLOAD** THE COMPLETE MANUAL

THIS KEY TO LUBRICATION CODE IS APPLIED TO CHARTS COVERING THE ENTIRE MACHINE—
FAMILIARIZE YOURSELF WITH THE FOLLOWING TABLES:

- (MPG) MULTIPURPOSE GREASE (Replaces WB & CG) This is a high quality, water resistant grease which has good mechanical and oxidation stability and good pumpability at operating temperatures. The grease may have a lithium or mixed base, must contain no graphite or other fillers and have the properties shown in the table,
USES—Anti-friction Bearings both packed and gun lubricated, Chassis and Plain Bearings and central lubricating systems.
- (RGL) REGULAR GEAR LUBRICANT These semi-fluid greases, summer and winter, have just enough body to retain them in a semi-enclosed case. The grease may have a sodium or mixed base, have good adhesive, load carrying and non-channeling properties and meet the specifications in the table,
USES—Semi-enclosed Gear Cases.
- (OGL) OPEN GEAR LUBRICANTS REPLACE SYMBOL (GC) must not drip or sling off while parts are idle or in motion, must be water and rust resistant and have extreme pressure characteristics.
Type (B) is applied without heat or a diluent by brush, gun or paddle
Type (H) is an asphaltic type lubricant used in the same applications as (Type B) and requires heat or a diluent to apply.
USES—Open Gears.
- MO Motor Oil—SAE 20 for winter, SAE 30 for summer
- (EO) ENGINE CRANKCASE See Instructions by manufacturer of Engine
- (MO) ** AIR COMPRESSOR CRANKCASE This is a highly refined low carbon residue oil having rust, foam and oxidation resisting properties. See Specifications in table.
- (HL) ** HAND LUBRICATION Use Oil (MO) above or a general machine oil (S-SAE 30, W-SAE 20 W)
- (GL) ENCLOSED GEAR CASE This is an extreme pressure corrosion and shock resistant type oil. See specifications in table.
USES—Sliding Surfaces.
- (PO) PNEUMATIC OIL This is a special oil available thru the Marion Power Shovel Company used in the air piping systems. It is a high detergent oil with good lubricity containing anti-wear, clinging and anti-freeze properties. It will not cause swelling nor deterioration in rubber or leather.
- (EMO) ** ELECTRICAL MOTOR OIL Use special lubricant supplied by the manufacturer of the electrical equipment.
- (HO) ** HYDRAULIC OIL This is a stable, high viscosity index oil with oxidation, corrosion, foam, sludge, gum and rust resistant properties with a low pour point and a low carbon residue. This oil shall not cause swelling nor deterioration in rubber or leather. Used in Hydraulic Systems for leveling and power transmission. See specifications in table.
- **NOTE: All oils are non-detergent except (EO) and (PO).

LUBRICATION OF ROTARY GEAR CASE
(CON'T)

LOCATION NO.	NAME OF PART	TYPE	NO. OF FIGS	LOCATION OF FITTING	LUB SYM	LUB PERIOD IN HRS.
	2ND Intermediate Rotating Shaft Bearing (bottom)	Anti-Friction	1	In bearing retainer under MPG side of upper frame	MPG	500
	Rotating Gear Case	- - -	-	Fill plug in top of case	Cap. 9 Gal S.A.E. 80 Winter & Summer	Check Daily
	Rotating Motor	Anti-Friction		See Manufacturers Recommendations		
<u>ROTATING LOCK BRAKE</u>						
	Brake Shoe Anchor Bearing	Bushing	1	In shoe boss	MPG	4 - 8
	Lever Arm Anchor Bearing	Bushing	1	In end of lever arm boss	MPG	4 - 8
<u>LUBRICATION OF BOOM HOIST</u>						
	Boom Hoist Worm Shaft Bearing (top)	Anti-Friction	1	Under Pinion on top of deck plate	MPG	500
	Boom Hoist Worm Shaft Bearing (bottom)	Anti-Friction	-	From Gear Case Oil		
	Worm Wheel Shaft	Bushing	3	2 in R.H. end of Shaft 1 in L.H. end of Shaft	MPG	4 - 8
	Boom Hoist Gear Case	- - -	-	Fill thru plug in top of case on deck	GL S.A.E. 140	Check Weekly Cap. 9 Gal. At All Times

BI006312

KL 3866

POPPET VALVE ASSEMBLY

ITEM NO.

NAME OF PART

XN-2446

POPPET VALVE COMPLETE

N-10815

CONSISTS OF:

UPPER HALF VALVE BODY

N-10797

CONSISTS OF:

VALVE BODY

N-10919

VALVE PLUNGER SEAL

N-10800

VALVE PLUNGER RETURN SPRING

N-10801

VALVE PLUNGER

4-X-2166

WASHER

N-10805

GASKET

C-10074

LOCK RING

N-10798

VALVE BODY, LOWER HALF

C-11472

VALVE SEAL AND RETAINER

N-10923

SPRING

N-10806-B

VALVE END CAP

4-X-40

LOCK WASHER

3-X-1065

SCREW

XN-2446-A

POPPET VALVE COMPLETE

N-10815

CONSISTS OF:

UPPER HALF VALVE BODY

N-10797

CONSISTS OF:

VALVE BODY

N-10919

VALVE PLUNGER SEAL

N-10800-A

VALVE PLUNGER RETURN SPRING

N-10801

VALVE PLUNGER

4-X-2166

WASHER

N-10805

GASKET

C-10074

LOCK RING

N-10798-A

VALVE BODY, LOWER HALF

C-11472

VALVE SEAL AND RETAINER

N-10923

SPRING

N-10806

VALVE END CAP

4-X-40

LOCK WASHER

3-X-1065

SCREW



QUICK RELEASE VALVE (SMALL) (205000)

RL 5426

ITEM NO.	PART NO.	NAME OF PART	QUAN. REQ.
1	205000	QUICK RELEASE VALVE COMPLETE	1
2	202588	SPRING	1
3	232017	DIAPHRAGM	1
4	202587	SPRING SEAT	1
5	204847	BODY	1
6	211028	COVER	1
20	RL 5426-20	REPAIR KIT (CONSISTS OF)	1
		202588 SPRING	1
		232017 DISPHRAGM	1
		202587 SPRING SEAT	1

CLICK HERE TO **DOWNLOAD** THE COMPLETE MANUAL

- Thank you very much for reading the preview of the manual.
- You can download the complete manual from: www.heydownloads.com by clicking the link below

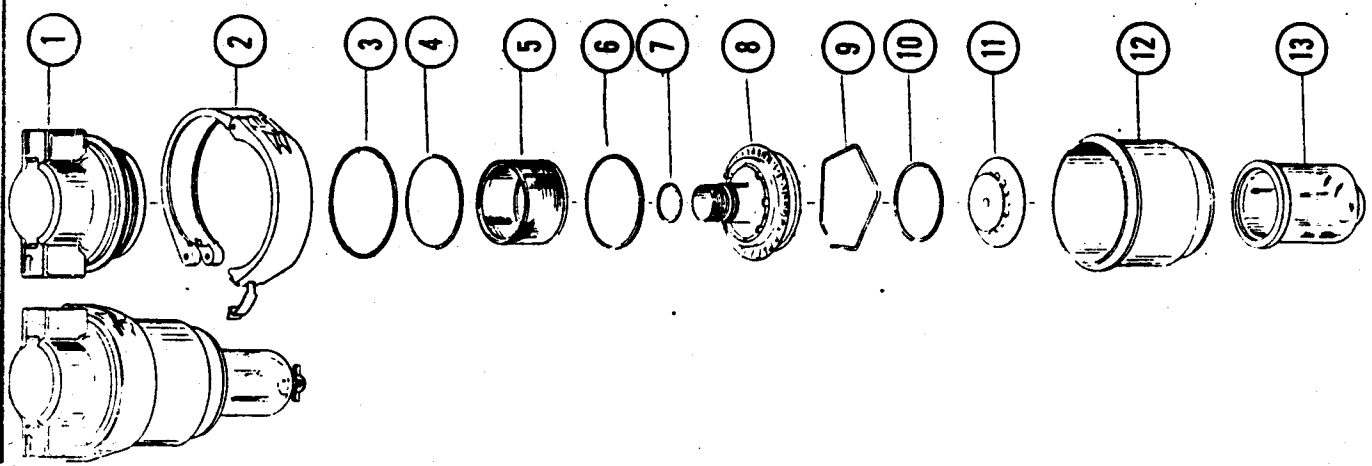


- Please note: If there is no response to CLICKING the link, please download this PDF first and then click on it.

CLICK HERE TO **DOWNLOAD** THE COMPLETE MANUAL

RL 5787

MANUAL DRAIN FILTER (12-002-039)



ITEM NO.	PART NO.	NAME OF PART
1		BODY (NOT A REPLACEMENT PART)
2	729-02	CLAMP-RING ASSEMBLY
3	1922-01	"0" RING
4	814-01	GASKET FOR FILTER (FOR SINTERED BRONZE FILTERS ONLY)
5	793-01	FILTER - 50 MICRON SINTERED BRONZE
6	814-01	GASKET FOR FILTER (FOR SINTERED BRONZE ONLY)
7	1982-01	"0" RING
8	810-03	DEFLECTOR ASSEMBLY
9	813-01	SNAP RING
10	794-01	"0" RING
11	799-02	BAFFLE ASSEMBLY
12	808-02	INTERMEDIATE BODY
13	603-07	BOWL (WITH DRAIN-COCK) SAFETY-GREEN
14	684-01	TRANSPARENT DRAIN-COCK

HEAD GROUP - CONTINUED

BI006312

MODEL 340

INDEX NUMBER	PART NUMBER	NOMENCLATURE	QUANTITY REQUIRED FOR ONE MACHINE				
			PLAIN	LOADLESS	VD	DUAL CONTROL	HAND
30	1556	GASKET - VALVE COVER	-	2	2	2	2
31	6928	PLATE - HIGH PRESSURE INTAKE COVER	-	1	1	1	1
32	6927	PLATE - LOW PRESSURE INTAKE COVER	-	1	1	1	1
33	6926	SPACER - VALVE RETAINER	-	2	2	2	2
34	6925	PLATFORM - UNLOADER	-	2	2	2	2
35	1857	PIN - UNLOADER KICKOFF	-	6	6	6	6
36	6910	SPRING - UNLOADER KICKOFF PIN	-	6	6	6	6
37	1642	ELBOW - 1/8"NPT X 1/4" COPPER TUBE	-	1	1	1	-
38	1818B	COVER - DIAPHRAGM	-	2	2	2	-
39	2040	SCREW - 14"NC X 3/4" FILLISTER HEAD CAP	-	12	12	12	-
40	1855	DIAPHRAGM	-	2	2	2	-
41	5910	DISC - DIAPHRAGM	-	2	2	2	-
42	7532-X	PISTON - UNLOADER	-	2	2	2	-
		NOTE: INDIVIDUAL "O" RINGS FOR THIS ASSEMBLY ARE NOT OFFERED SEPARATELY					
43	2755	PLUG - 1/8"NPT SOCKET HEAD PIPE NOTE: THIS PLUG IS USED ON THE LOW PRESSURE UNLOADER BODY ONLY. SUBSTITUTE NO. 2709 ELBOW CONNECTOR IN THE HIGH PRESSURE UNLOADER BODY.	-	2	2	2	-
44	7483	BODY - UNLOADER	-	1	1	1	-
45	6912	PIN - UNLOADER	-	2	2	2	-
46	2586	TUBE - 1/4" X 10" COPPER	-	1	1	1	-
47	2709	ELBOW - 1/8"NPT X 5/16" COPPER TUBE	-	1	1	1	-
48	5950	TUBE - 5/16" X 12" COPPER	-	1	1	1	-
49	2709	ELBOW - 1/8"NPT X 5/16" COPPER TUBE	-	1	1	1	-
50	4574	TEE - 1/4"NPT PIPE	-	1	1	1	-
51	2946	NIPPLE - 1/4"NPT X 1 1/2" PIPE	-	1	1	1	-
52	1665	TEE - 1/8"NPT X 1/4" COPPER TUBE	-	1	1	1	-
NOT SHOWN	2719	PLUG - 1/4"NPT PIPE NOTE: USED ON HAND UNLOADER MACHINES ONLY. TO PLUG THE VENT HOLE.	-	-	-	-	1
		<u>ASSEMBLIES</u>					
53	7277-X	VALVE ASSEMBLY - INTAKE	3	1	1	1	1
54	7277-XU	VALVE ASSEMBLY - UNLOADER TYPE INTAKE	-	2	2	2	2
55	6661X31P	HEAD ASSEMBLY - PLAIN TYPE	1	-	-	-	-
56	6661X31L	HEAD ASSEMBLY - LOADLESS, VD, OR DUAL CONTROL TYPE	-	1	1	1	-
57	6661X31H	HEAD ASSEMBLY - HAND UNLOADER TYPE	-	-	-	-	1
58	7271-X	VALVE ASSEMBLY - DISCHARGE	3	3	3	3	3
59	1602-X2	UNLOADER ASSEMBLY - HAND	-	-	-	-	2
60	7483-X	UNLOADER BODY ASSEMBLY	-	2	2	2	-

* ASTERISK INDICATES THAT PART CAN BE USED IN THE CATEGORY INDICATED BUT MUST BE ORDERED AS EACH INDIVIDUAL SITUATION REQUIRES

**BE SURE TO GIVE YOUR QUINCY AUTHORIZED SERVICE
 DEPOT COMPLETE SERIAL NAME PLATE DATA WHEN YOU
 ASK FOR HELP WITH YOUR COMPRESSOR PROBLEMS**

LUBRICATION
OF
BEARINGS
(continued)

The above lubricant should be added with the units at rest and the drain plug removed. After the lubricant has been added, the generator or motor should be run with the bottom plug removed for approximately one half hour to make certain all excess grease flows out. Do not forget to replace the plug.

In most cases, the main hoist, crowd and swing motors have no plug to be removed, but surplus grease will blow out in a pocket beneath the bearing housing. On vertical motors and some type of horizontal motors, plugs must be removed the same as for the generators.

As mentioned in the 250 hour interval procedure, the bottom plugs should always be removed before greasing to see that surplus grease escapes. Do not forget to replace the plug.

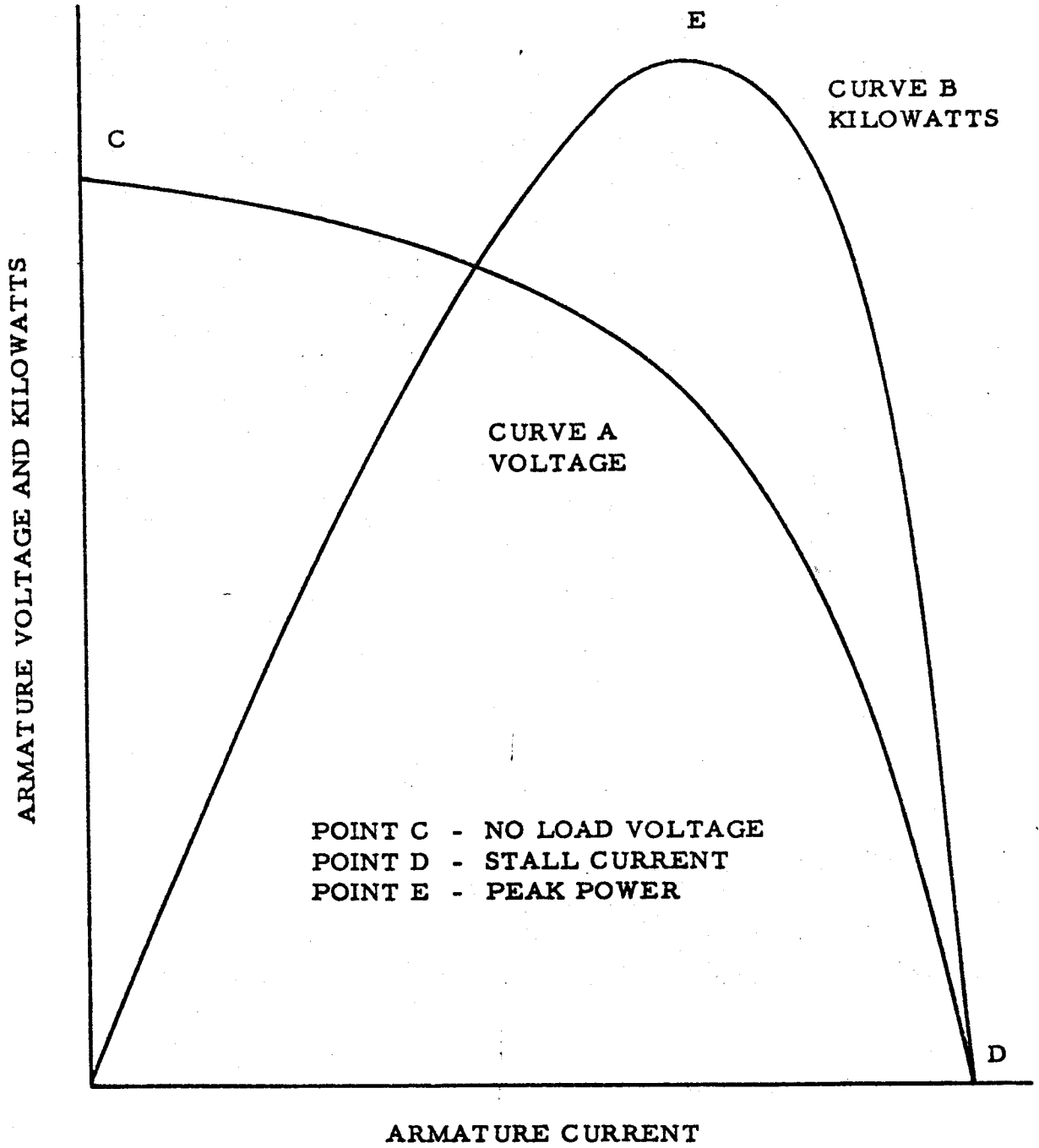
Approximately once every year, or after 7500 hours operating time, the bearing should be "purged" by pumping sufficient grease through the bearing while running so new grease appears either at the shaft or at the bottom plug. If the grease comes out along the shaft, it is very important that this be kept wiped off until new grease appears. Finally clean off shaft thoroughly again after the machine has operated for 15 or 20 minutes. The new grease should appear first at the bottom hole, but sometimes it comes out first along the shaft.

If possible, approximately once every two years the bearings should be disassembled and all old grease removed by a thorough cleaning with light lubricating oil or petroleum solvent.

Each time the bottom plug is removed, a clean wire should be pushed into the hole to make certain the grease has not hardened to plug the hole.

One measuring tablespoonful is equal to approximately one ounce of grease. Use General Electric Co. ball gearing grease #D6A2A3 for General Electric Company equipment. Use Westinghouse Electric Corp. grease #1449556 for Westinghouse equipment.

TYPICAL GENERATOR CURVES





WELDING INFORMATION

FOR

MAINTENANCE OF MARION MACHINES

CI-792

JUNE 1966

MARION POWER SHOVEL COMPANY, INC. • MARION, OHIO, U. S. A.

A SUBSIDIARY OF PITTSBURGH COKE & CHEMICAL COMPANY

CLICK HERE TO **DOWNLOAD** THE COMPLETE MANUAL

- Thank you very much for reading the preview of the manual.
- You can download the complete manual from: www.heydownloads.com by clicking the link below



- Please note: If there is no response to CLICKING the link, please download this PDF first and then click on it.

CLICK HERE TO **DOWNLOAD** THE COMPLETE MANUAL