
Service documents

Double filter, can be backflushed

6244-107

CLICK HERE TO **DOWNLOAD** THE COMPLETE MANUAL

- Thank you very much for reading the preview of the manual.
- You can download the complete manual from: www.heydownloads.com by clicking the link below



- Please note: If there is no response to CLICKING the link, please download this PDF first and then click on it.

CLICK HERE TO **DOWNLOAD** THE COMPLETE MANUAL

2.6 Safety instructions for installation



BEWARE!

Installation work must always be performed at clean and well-organized workplaces.

2.7 Safety instructions for operation and maintenance



CAUTION!

Regular inspections (with respect to function and damage) must be performed on the double filter!

The safe operational status of the double filter is to be maintained at all times!

Inspection and maintenance work may be performed only by trained/instructed operating personnel!

The personnel must be familiar with the rules and regulations for preventing accidents that are in effect at the respective installation/utilization site and observe them without exception.

The safety regulations which are relevant to the operation and maintenance of the double filter must be strictly complied with!

Pressure must be relieved on the double filter before beginning maintenance work!

Hoses, lines, threads and other connections must be inspected regularly for damage.

Any defects discovered must be eliminated immediately.

2.8 Safety instructions in the event of malfunction



CAUTION!

In the context of his safety plan, the operator must check whether additional hazards could arise for employees in the event of a malfunction and whether additional safety measures need to be implemented for such cases.

All of the employees whose assigned duties include work on the double filter must be given complete information regarding current safety plans!

**CAUTION!**

The double filter is to be checked regularly for leaks. The correct seating and intactness of the all of the connection lines should also be checked during the inspection.

7.6 Backflushing the double filter

The backflushing intervals required for economic operation are dependent on the contamination to be found in the medium to be filtered; it is for that reason that no binding statement can be made by SEETECH GmbH with respect to the time and frequency of backflushing.

It is preferable to switch the double filter to backflushing position by means of electrical activation of the pilot valve. The electrical controls system should be designed in such a way that the automatic backflushing is not triggered until a differential pressure has been built up (recommended at ca. 6-10 bar). Care must be taken to ensure that the backflushing sequence is not triggered before the measured differential pressure has been in effect for ca. 15 seconds. The duration of the respective backflushing sequence should amount to at least 3 seconds but not more than 5 seconds.

The effectiveness of backflushing is dependent on the amount of fluid which flows through the filter element in the direction opposite to the direction of filtration. A flow rate of approximately 250 l/min is required for optimum cleaning of the filter elements. This will ensure that practically all foreign particles will be loosened from the filter elements and flushed out from the double filter through the backflushing outlets.

**CAUTION!**

The backflushing of the double filter is triggered exclusively by activation of the pilot valve (either electrically or mechanically). During regular filtering operation, the selector shafts protruding from the double filter are to be actuated only for switching the double filter back from backflushing into filtering position in the event that the inlet pressure from the separate pressure supply is either nonexistent or insufficient!

**BEWARE!**

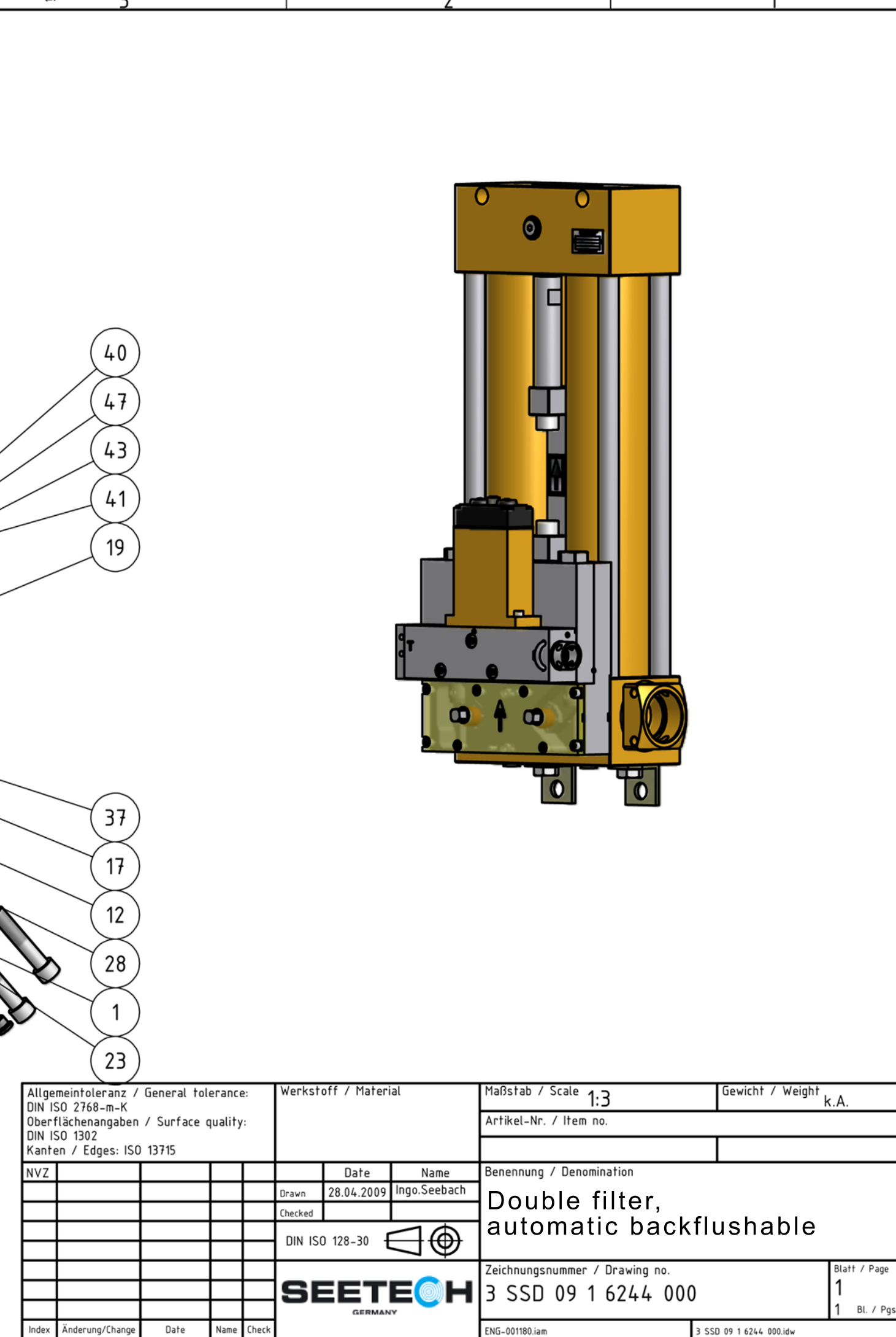
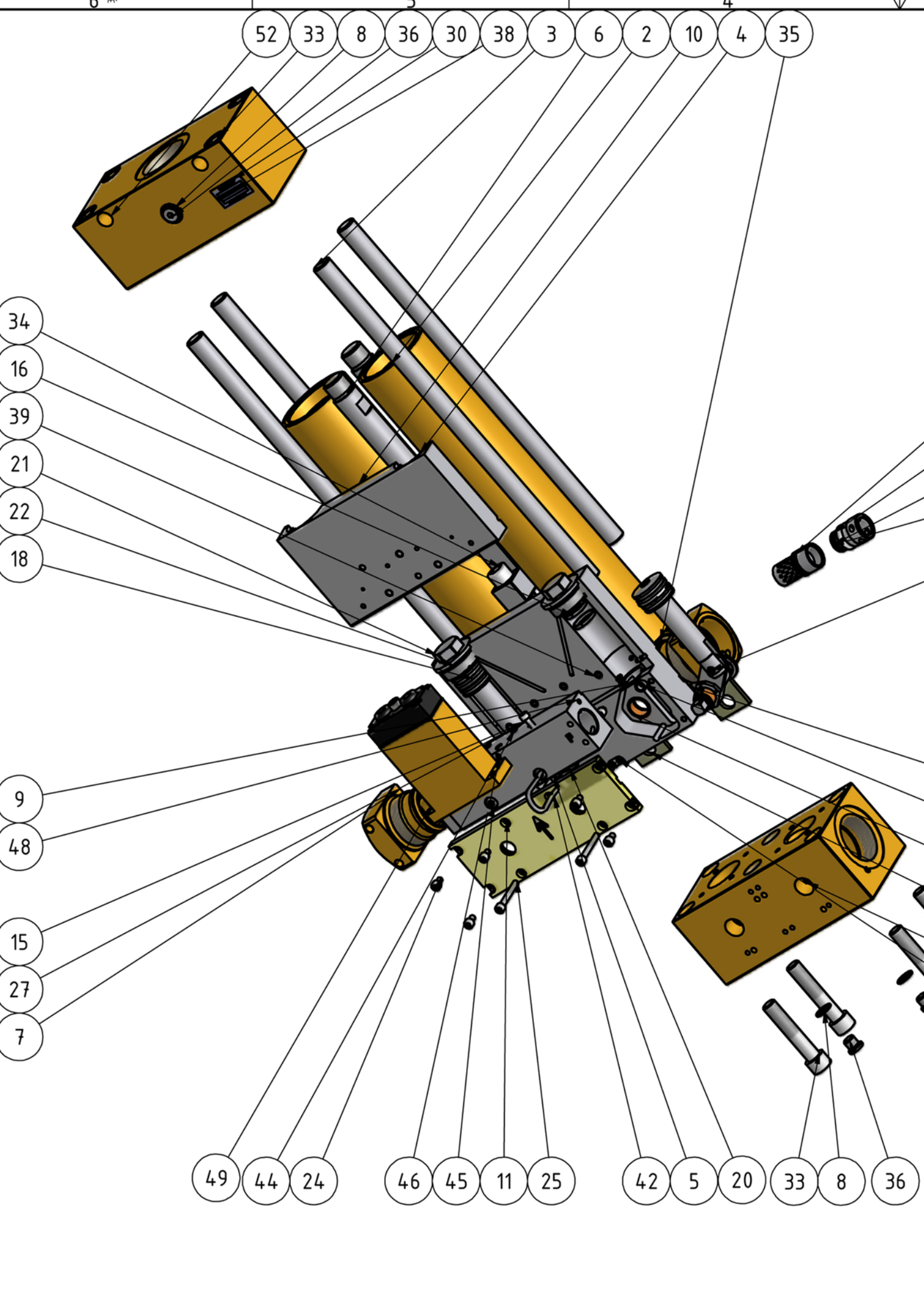
The filter elements used in the double filter must be backflushed before the maximum allowable differential pressure for the filter elements is reached!

The backflushing of the two filter elements must always be carried out in alternating sequence!

**NOTICE!**

Both filter elements should be backflushed once per shift as a general recommendation.

This document must not be reproduced, copied or made available to third persons without prior written approval by SEETECH GmbH. Violations will be prosecuted and the violator will be held financially liable. This document is to be returned to SEETECH GmbH after use. All rights with respect to patents and registered trademarks are reserved.



| | | | | | |
|--|-----------------|----------------------|--------------|---|-------------------------|
| Allgemeintoleranz / General tolerance: DIN ISO 2768-m-K | | Werkstoff / Material | | Maßstab / Scale 1:3 | Gewicht / Weight k.A. |
| Oberflächenangaben / Surface quality: DIN ISO 1302 | | | | Artikel-Nr. / Item no. | |
| Kanten / Edges: ISO 13715 | | | | | |
| NVZ | | Date | Name | Benennung / Denomination | |
| | | Drawn 28.04.2009 | Ingo.Seebach | Double filter, automatic backflushable | |
| | | Checked | | Zeichnungsnummer / Drawing no. | |
| | | | | 3 SSD 09 1 6244 000 | |
| | | | | Blatt / Page 1 | |
| | | | | 1 Bl. / Pgs. | |
| Index | Änderung/Change | Date | Name | Check | ENG-001180.iam |
| | | | | | 3 SSD 09 1 6244 000.idw |



4.1 Qualified personnel

These are persons, familiar with the installation, assembly, commissioning and operation of the product. Furthermore these persons must be qualified and trained for tasks, these persons are authorized to perform. (E.g. training and obligation to maintain required operating conditions in accordance to regional and site-specific rules and regulations).

Education or training for care and use of safety and protective equipment, according relevant standards of safety techniques.

5. Warranty and Liability

Our standard terms and conditions of sale and delivery apply, unless other conditions for warranty and liability were explicitly mutually agreed upon. Claims of warranty or liability leading back to any of the below described causes is not legitimate.

- Using the SMALL-Device for Pressure, Level and Temperature measuring not in compliance with the intended purpose of use of this item.
- Incorrect installation, commissioning, operation and maintenance of the SMALL-Device for Pressure, Level and Temperature measuring
- Operation of the SMALL-Device for Pressure, Level and Temperature measuring in conjunction with defective safety devices or in correctly installed safety and protective devices.
- Neglecting of instructions regarding transportation, storing, installation, commissioning, operation and maintenance of the SMALL-Device for Pressure, Level and Temperature measuring
- Unauthorized modification or adjustments of the SMALL-Device for Pressure, Level and Temperature measuring.
- Inappropriate condition monitoring of parts subject to wear.
- Incorrect repairs, inspections and maintenance.
- Catastrophic failures caused by external forces and force majeure.

Any liability for damages caused by in correct operation of the SMALL-Device for Pressure, Level and Temperature measuring will be rejected.

CLICK HERE TO **DOWNLOAD** THE COMPLETE MANUAL

- Thank you very much for reading the preview of the manual.
- You can download the complete manual from: www.heydownloads.com by clicking the link below



- Please note: If there is no response to CLICKING the link, please download this PDF first and then click on it.

CLICK HERE TO **DOWNLOAD** THE COMPLETE MANUAL