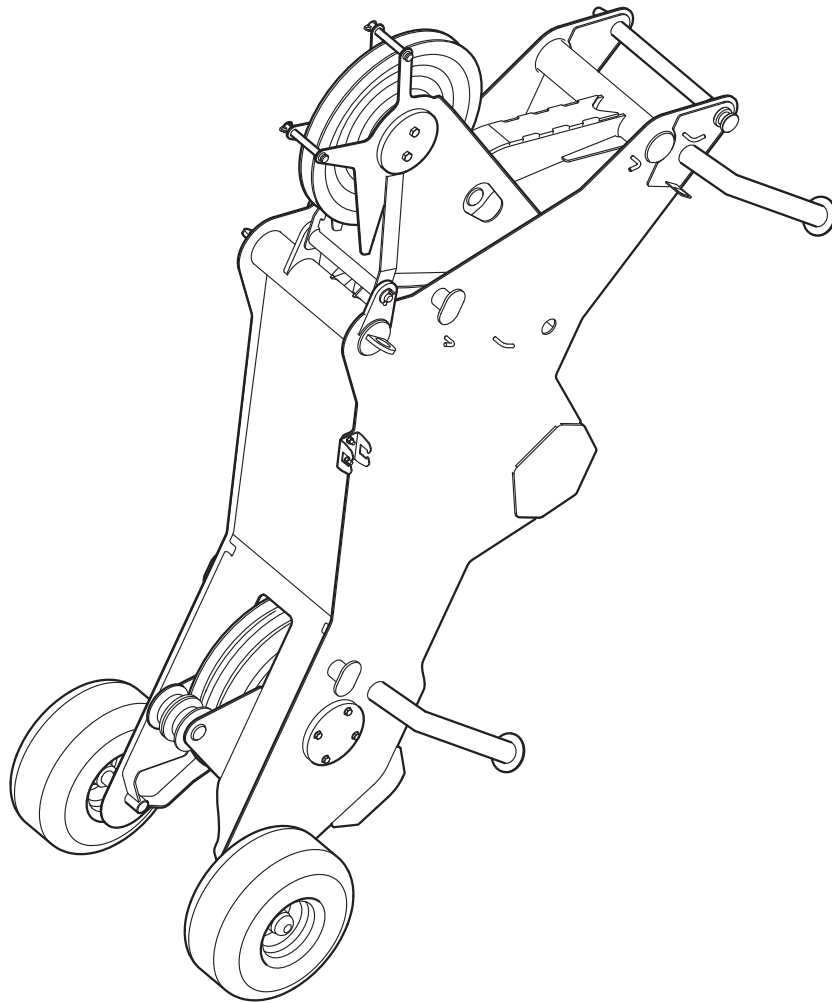


Grove GMK 6400

Operating manual Auxiliary single-sheave boom top for boom extension



3 302 513 en
20.06.2016

Grove

Manitowoc

National Crane

Potain



CLICK HERE TO **DOWNLOAD** THE COMPLETE MANUAL

- Thank you very much for reading the preview of the manual.
- You can download the complete manual from: www.heydownloads.com by clicking the link below



- Please note: If there is no response to CLICKING the link, please download this PDF first and then click on it.

CLICK HERE TO **DOWNLOAD** THE COMPLETE MANUAL

Non-permissible rigging modes

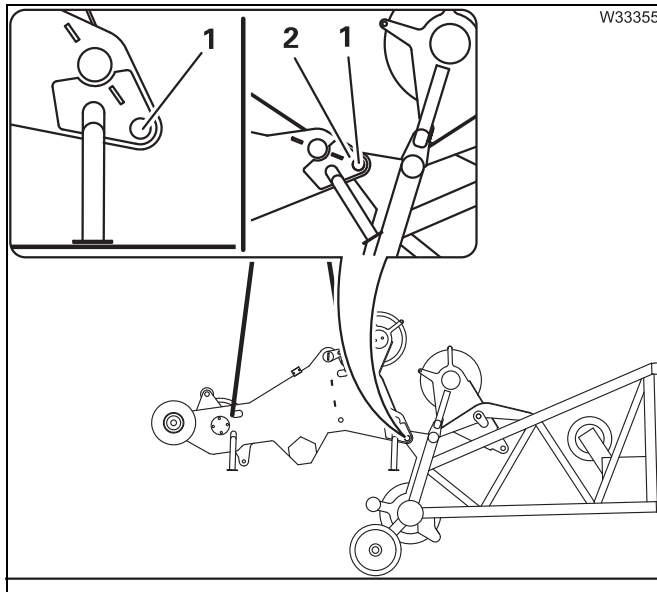
Depending on the length and the angle of the boom extension, the operation with auxiliary single-sheave boom top is not permissible for certain outrigger spans and counterweight combinations. For rigged auxiliary single-sheave boom top, the rigging modes indicated here are not released by the RCL.

Non-permissible rigging modes				
Boom extension Length (m)	MWL	Outrigger span in m	Angle in °	Counterweight versions in t
46	without	8.70 x 8.50	3 / 25	55
52	without	8.70 x 8.50	3 / 25	55
28	with	8.70 x 6.30	3 / 25	55
28	with	8.70 x 8.50	3 / 25	35
30	with	8.70 x 6.30	3	55
30	with	8.70 x 7.40	3	45
30	with	8.70 x 8.50	3	35
36	with	8.70 x 7.40	3	55
36	with	8.70 x 8.50	3	45
40	with	8.70 x 7.40	3 / 25	55
42	with	8.70 x 7.40	3	55
46	with	8.70 x 6.30	3 / 25	75
46	with	8.70 x 7.40	3 / 25	55
46	with	8.70 x 8.50	3 / 25	55



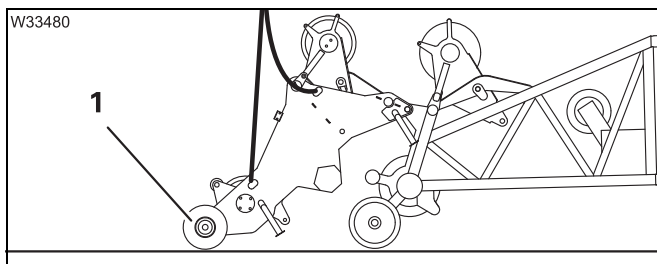
1.3.5

Auxiliary single-sheave boom top/head – establishing/breaking connection

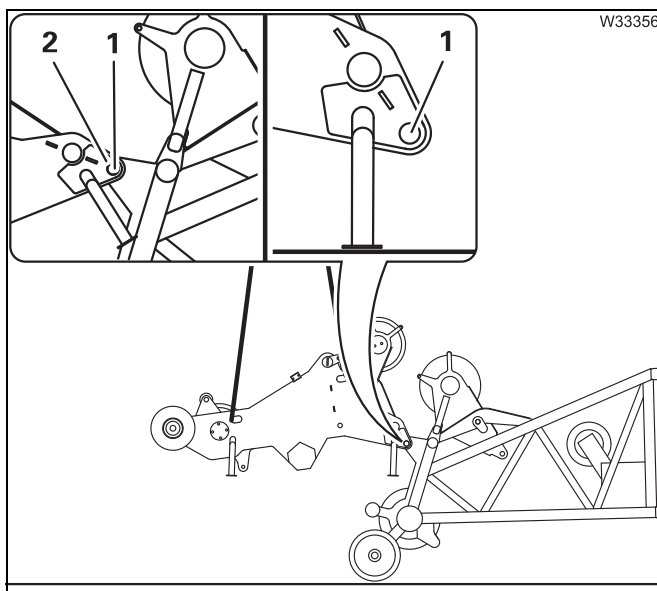


Establish

- Remove the pin (1) from the connecting point at the auxiliary single-sheave boom top.
- Lift the auxiliary single-sheave boom top in front of the head so that the connection points (2) are aligned.
- Insert the pin (1) into the connection point (2) and secure it with the retaining pin.



- Set the auxiliary single-sheave boom top on the on the wheels (1).



Breaking

- Raise the auxiliary single-sheave boom top so that the connecting points (2) are relieved.
- Remove the pin (1) from the connecting point (2).
- Lift the auxiliary single-sheave boom top from the head and secure the pin (1) in the connecting point at the auxiliary single-sheave boom top.

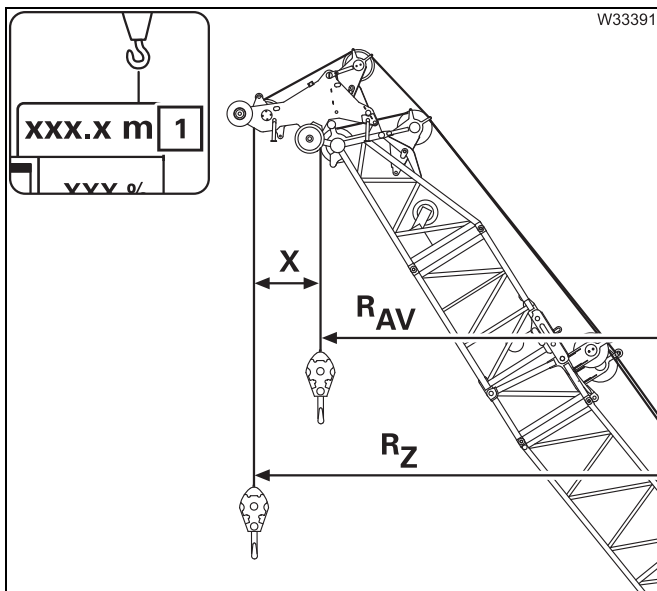
Possible uses

The RCL setting (▮▮▮ p. 1 - 23) for the auxiliary single-sheave boom top is intended for operation with different boom systems.

- Operation with the auxiliary single-sheave boom top
- Operation with boom extension
- Operation with boom extension and auxiliary single-sheave boom top (two-hook operation)

Deviations

When the auxiliary single-sheave boom top is electrically connected, the RCL considers the working radius of the auxiliary single-sheave boom top. This can lead to small deviations.



The RCL considers the working radius R_Z .

– Operation with boom extension

When the boom is lowered, the working radius R_{AV} according to the *Lifting capacity table* is not reached. The RCL switches off about 1.5 m before, as soon as the working radius R_Z has reached this value.

– Operation with the auxiliary single-sheave boom top

When raising, a shutdown can occur before the working radius R_{AV} has been reached that is indicated in the *Lifting capacity table*.

– Two-hook operation

If the load is hanging in range X , then there are deviations between the displayed working radius (1) and the actual working radius. The deviation is, however, in the safe range.



POS. POS.	TEILE-NR. PART-NO.	MENGE QUANTITY	BENENNUNG	DESIGNATION
001	3308551	1.0	TOP	JIB FIXED
002	3246083	1.0	ROHR	TUBE
003	3246079	1.0	ACHSE	AXLE
004	3007456	2.0	ABSCHLUSSDECKEL	END COVER
005	0437529	8.0	SCHEIBE	WASHER
006	0437190	8.0	SECHSKANTSCHRAUBE	HEXAGON SCREW
017	2081587-ETL	2.0	SEILROLLE, KPL.	SHEAVE, CPL.
018	1206271	2.0	DISTANZRING, AUSSEN	SPACER RING, OUTSIDE
021	3111878	1.0	STANGENHALTER	ROD HOLDER
022	0437183	2.0	SECHSKANTSCHRAUBE	HEXAGON SCREW
023	0437545	2.0	FEDERRING	SPRING WASHER
024	0437643	2.0	SECHSKANTMUTTER	HEXAGON NUT
028	3066216	2.0	SEILROLLE	SHEAVE
029	4166422	1.0	BOLZEN	PIN
030	3041042	1.0	SICHERHEITSKLAPPSTECKER	SAFETY LINC PIN
031	3246081	2.0	RAD KPL.	WHEEL CPL.
032	3246082	2.0	ABSCHLUSSKAPPEN	END COVER
033	0028194	2.0	SICHERUNGSRING	CIRCLIP
034	1206233	1.0	DISTANZRING, INNEN	SPACER RING, INSIDE
035	3308553	1.0	ROHR	fdghfgh

GROVE [®]	ROLLENKOPF KOPFSTUECK 2,5M ZUSATZ		ERSATZTEILLISTE LIST OF SPARE PARTS	GMK BE 710 G 172
	TOP ROLLER HEAD			
				1/2

CLICK HERE TO **DOWNLOAD** THE COMPLETE MANUAL

- Thank you very much for reading the preview of the manual.
- You can download the complete manual from: www.heydownloads.com by clicking the link below



- Please note: If there is no response to CLICKING the link, please download this PDF first and then click on it.

CLICK HERE TO **DOWNLOAD** THE COMPLETE MANUAL