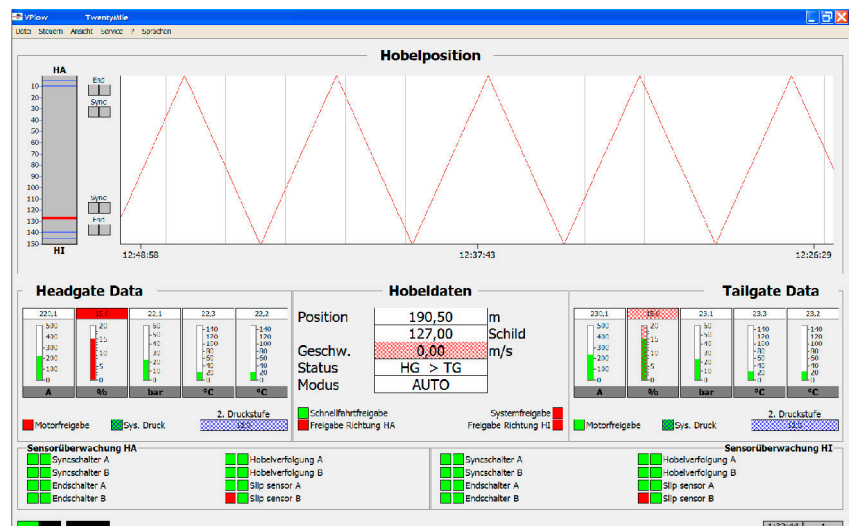


Operating manual

PMC[®]-System VPlow central control Facevisualisation for Plow PMC[®]-D Version 10.58

Doc. no.: 1999 001 014 BA 00



CLICK HERE TO **DOWNLOAD** THE COMPLETE MANUAL

- Thank you very much for reading the preview of the manual.
- You can download the complete manual from: www.heydownloads.com by clicking the link below



- Please note: If there is no response to CLICKING the link, please download this PDF first and then click on it.

CLICK HERE TO **DOWNLOAD** THE COMPLETE MANUAL

2 Your safety





Storage and transport

This chapter contains important information on correct storage and secure transport of the PMC® components. Observance of the instructions and manuals will increase the service life and reliability of the system components. Reading this chapter thoroughly will help you to make your day-to-day work easier.



Notice!
Never store PMC® components and other electronic equipment outdoors under any circumstances.

In this operating manual, the storage of data storage media, the creation of backup copies and the archiving of software are specifically addressed.



Important!
Every data storage medium and the corresponding reading/writing device might have its own information material and operating manuals which should be read carefully. These instructions only provide a few general tips for storing data storage media.

Storage of data storage media

If software is not copied via data lines, the following types of data storage media are generally used:

- floppy disks
- CD or DVD
- exchangeable disk media (for example, external USB hard disk)

Floppy disks

The following damage diskettes or the stored data:

damaging effects

- dirt and dust
- magnetic fields
- sunlight
- heat (> 50 °C)
- cold (< 10 °C)
- moisture
- bending the floppy disk

best storage place

The best place to store diskettes is in plastic or cardboard sleeves in a dust- and dirt-free, lockable metal cabinet in an air-conditioned room.

not a durable storage medium

Diskettes can be stored for up to 5 years, depending on the storage place, but they can be very easily damaged and are therefore not to be considered to be a durable storage medium.



result The programme is now fully installed. It is located on the following path:
 "C:\DBT\VCU\VPlow\10_58_Build_4304"
 The name of the folder "10_58_Build_4304" may be different, depending on the subversion.

Uninstall process

Deinstallation of the "VPlow" programme can be carried out at any time. Follow the following instructions one after another.

Procedure

- ☞ End the "VPlow" programme.
- ☞ Delete the directory in which the "VPlow" programme was installed (see "Installation" section in this chapter).
- ☞ Delete any shortcuts created (see "Creating a shortcut" section in this chapter).

result The programme is now completely uninstalled. It is not necessary to run a special programme to uninstall the programme.

Creating a shortcut

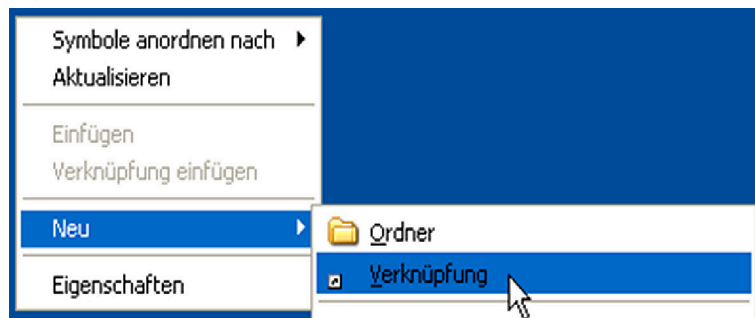
In order to simplify the starting procedure later, the creation of a link to the "VPlow.exe" programme is recommended.

Procedure

- ☞ Click the right mouse button on the desktop.

The desktop context menu is opened (Fig. 8).

Fig. 8: Opening the wizard in order to create a link



using the Windows wizard to create a shortcut

- ☞ Select the "New / Shortcut" menu item.

"Create Shortcut", the first dialogue page of the wizard used to create a new shortcut, appears (Fig. 9).

- ☞ Enter the path to the programme file "VPlow.exe" or select a path by clicking on the "Browse..." button.



simplifying the start-up procedure

opening the context menu by clicking the right mouse button



port = Physical address of the port used

Here the physical address of the connection is defined to which the "VPlow" programme forwards the data.

The Port parameter can be assigned the following values:

com1, com2, com3, com4 The data are forwarded via a serial port with the entered physical address.

IP address The IP address of the target computer is entered to forward the data. The transmission and reception ports must be additionally entered, separated by a colon.

between 01024 and 65535 The first port address is entered behind the IP address. The port is used to receive data. The value must be between "01024" and "65535". The next free port is searched for if "0" is entered.

between 01024 and 65535 The second port address is entered behind the first port address. The port is used to transmit data. The value must be between "01024" and "65535", must not be the same as for the first port address however. The next free port is searched for if "0" is entered.

Examples:

Port=10.158.22.34:0:0

Port=10.158.22.34:55566:55565

bps = Entering the transmission rate for a serial port

This parameter is used to specify the transmission speed when using a serial interface.

The maximum transmission speed is 115200 Baud. If malfunctions should occur, a lower transmission speed must be entered.

Example:

Baud=19200



Fig. 23: Print main screen command

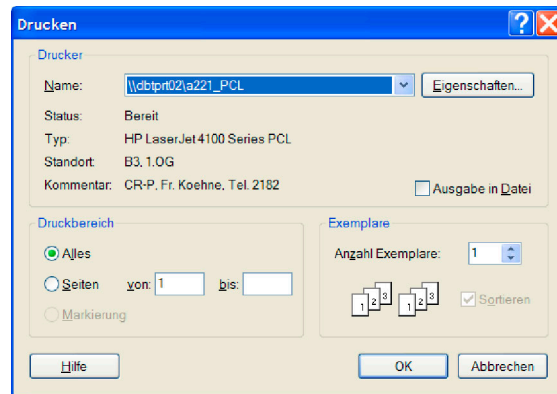
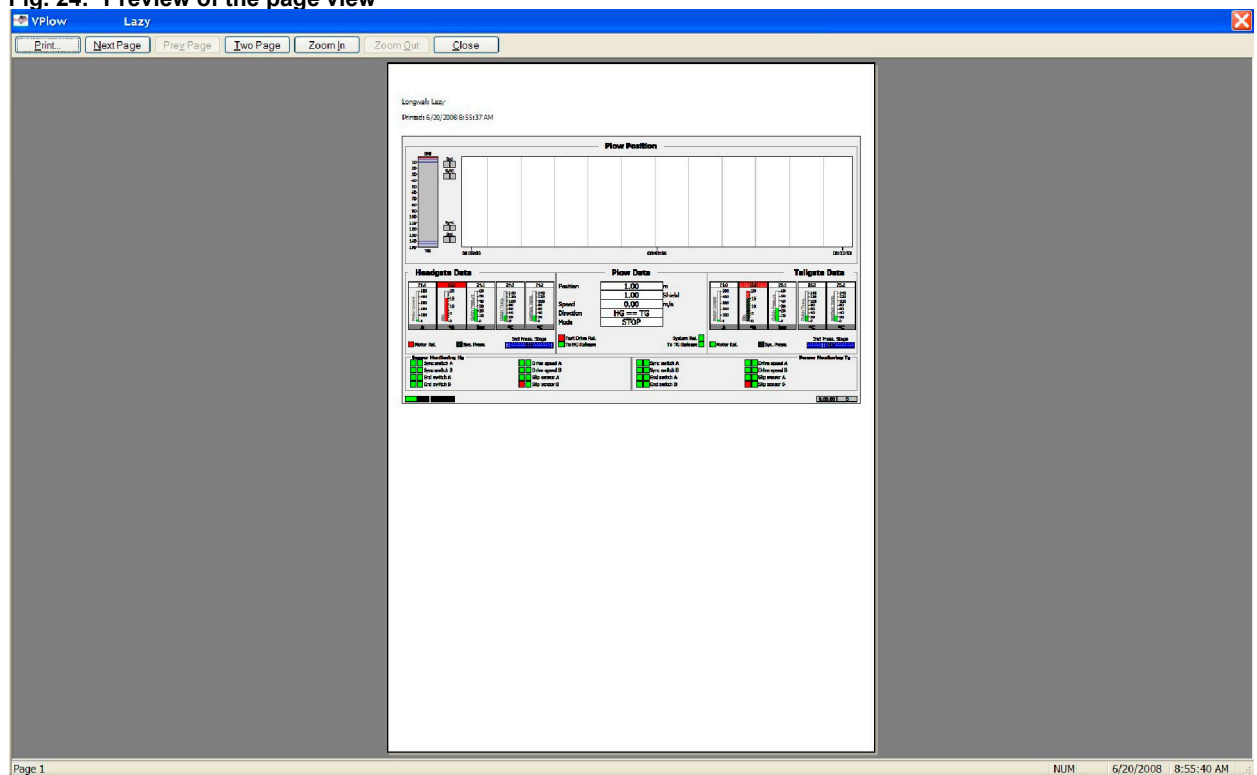


Fig. 24: Preview of the page view



When the printer is set to vertical (portrait) format, the printout will be constructed as shown in Fig. 24. If one sets the printer to horizontal (landscape) format, then the print will be reformatted accordingly, as with other Windows programs.

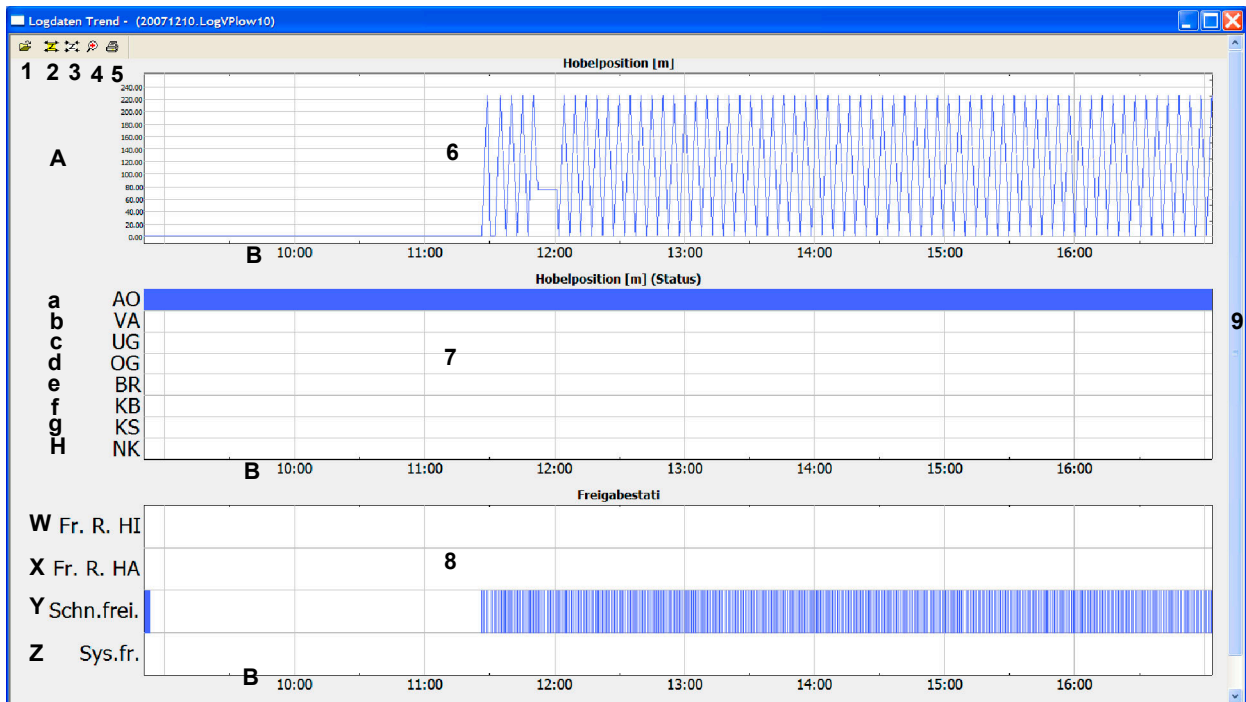
Fig. 25: Dialog window after the “Exit” command



The “Exit” command opens a dialogue box in which one must confirm once again whether the programme is to be exited or not. If the “No” button is actuated or if the “N” button is actuated when the dialogue box is opened, then the programme will be ended completely.



Fig. 36: Log data display with three selected diagrams



- | | | | | | |
|---|----------------------------------|---|--------------------------|---|---------------------------------------|
| 1 | symbol button for Open file | a | AO evaluation OK | A | plow position in shield numbers |
| 2 | enlarge time section | b | VA data out of date | B | time axis |
| 3 | reduce time section | c | UG lower limit | w | tail gate travel direction enablement |
| 4 | magnifier | d | GO upper limit | x | head gate travel direction enablement |
| 5 | symbol button for printing | e | BR sensor is bridged | y | fast drive enablement |
| 6 | diagram for plow position | f | KB cable breakage | z | system enablement |
| 7 | diagram for plow position status | g | KS short circuit | | |
| 8 | diagram enablement statuses | h | NK sensor not configured | | |
| 9 | scroll bar | | | | |

The display window (Fig. 36, page 5.19) for log data has its own icon bar containing buttons to make working easier:

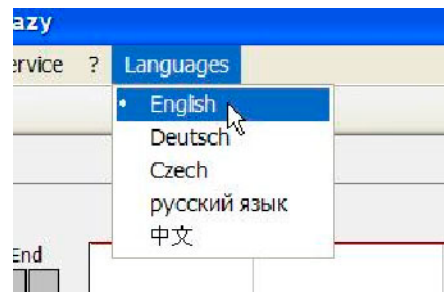
- Key for Open file [1]
If one has opened a log file in accordance with the procedure previously described, then one can also open other log files from this window and have other files displayed accordingly.
- Enlarge time section key [2]
If the "Magnifier" key is used, or if work has been done with the "Reduce time axis" key, then one can reduce the size of the view with this key. If the key [3] has been actuated several times, then this key [2] must be actuated exactly as often in order to reverse the steps and restore the original status.
- Reduce time section key [3]
The diagram is zoomed in by actuating this key. Repeated actuation zooms further in.
- Magnifier key [4]
A magnification function can be initialised with this key. A frame can be drawn around a detail to be enlarged with the left-hand mouse key pressed down following actuation. The selected frame will be enlarged to window size after the mouse button is released.



The Languages menu

The “Languages” command opens a pull-down menu for switching the language.

Fig. 50: “Languages” pull-down menu



In the ini file, the language can be switched to one of the offered languages by “undoing” the commenting out of the “enable” line. When there is only one language setting in the ini file, the “Languages” menu item is not available.

CLICK HERE TO **DOWNLOAD** THE COMPLETE MANUAL

- Thank you very much for reading the preview of the manual.
- You can download the complete manual from: www.heydownloads.com by clicking the link below



- Please note: If there is no response to CLICKING the link, please download this PDF first and then click on it.

CLICK HERE TO **DOWNLOAD** THE COMPLETE MANUAL