

Operating Instruction/Maintenance Instruction

Original Operating Instructions

DRP45DX

Reversible plate



S/N 101 925 40 1001>
DL8 206 39 EN
© 01/2022

CLICK HERE TO **DOWNLOAD** THE COMPLETE MANUAL

- Thank you very much for reading the preview of the manual.
- You can download the complete manual from: www.heydownloads.com by clicking the link below



- Please note: If there is no response to CLICKING the link, please download this PDF first and then click on it.

CLICK HERE TO **DOWNLOAD** THE COMPLETE MANUAL

Concerning your safety – Definition of responsible persons

- have made himself familiar with the operation of the machine,
- be physically and psychologically able to drive and operate the machine.

Persons under the influence of alcohol, medication or drugs are not allowed to operate, service or repair the machine.

Maintenance and repair work requires specific knowledge and must therefore only be performed by trained specialists.

3.7 Work mode

3.7.1 Persons in the danger area

Before taking up work, also after breaks, you should always convince yourself that the danger zone is free of persons or obstructions.

Give warning signals, if necessary. Stop work immediately if persons remain in the danger zone, despite the warning.

3.7.2 Operation

Operate the machine only with the steering rod folded down and adjusted to height.

Guide the machine only by means of the steering rod.

Guide the machine so that your hands do not hit against solid objects.

When reversing, steer the machine using the side of the steering handle.

Watch out for unusual noises and development of smoke. Perform trouble shooting and have the fault corrected.

Always keep a safe distance to excavation pit borders, embankments and edges.

Refrain from any work that could adversely affect the stability of the machine.

3.7.3 Parking the machine

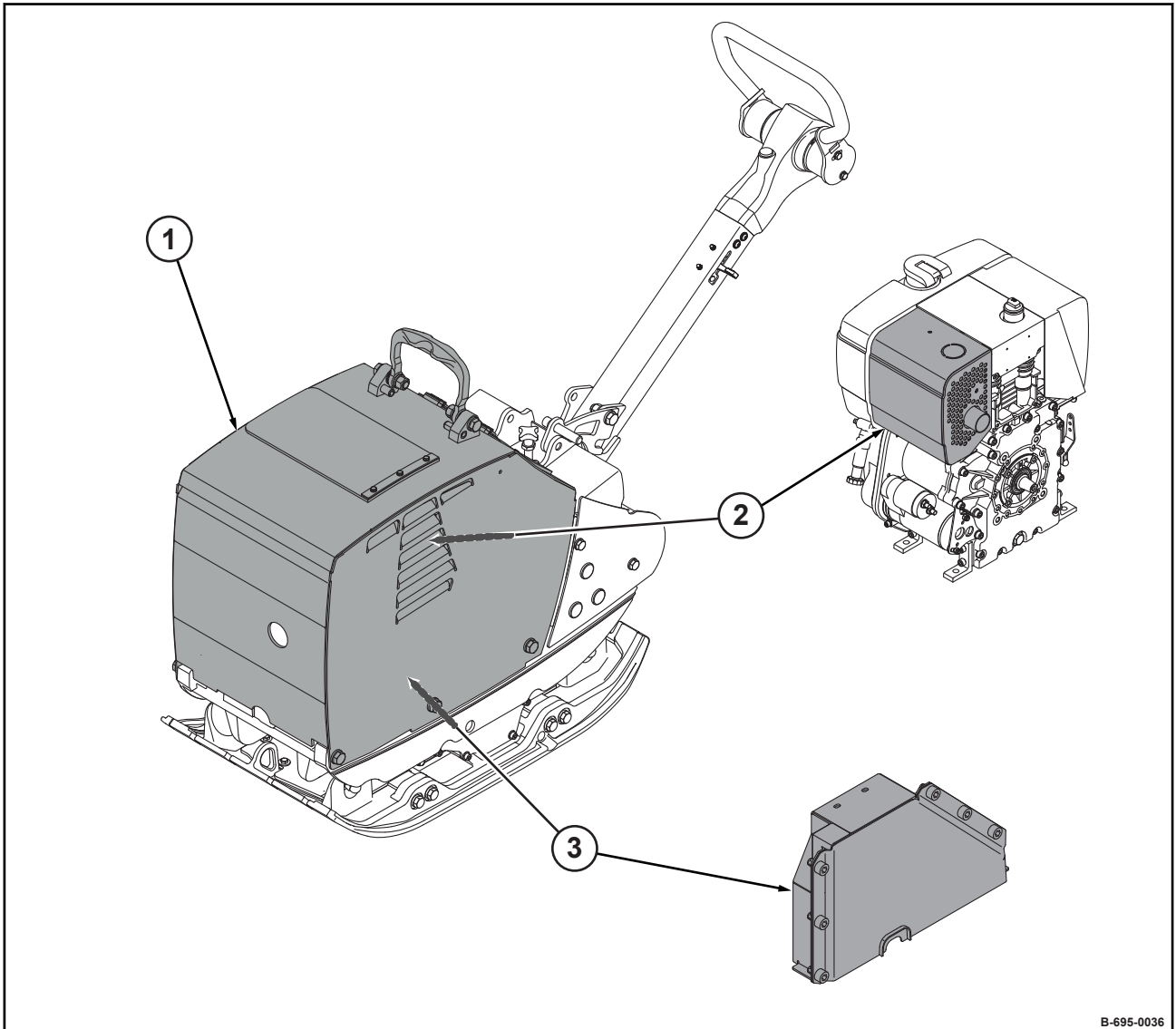
Park the machine on horizontal, level, firm ground.

Before leaving the machine:

- shut down the engine, pull off the ignition key,
- Secure the machine against accidental tipping over,
- Secure the machine against unauthorized use.

Mark machines, which could be in the way, with a clearly visible sign.

3.12 Safety Components



B-695-0036

Fig. 23

- 1 Protection hood
- 2 Heat protection cover
- 3 Belt guard

5.2 Visual inspections and function tests

1. Check the condition of the fuel tank and fuel lines and for leaks.
2. Check the bolted connections are tight and secure.
3. Check the machine for contamination and damage.
4. Check the hydraulic oil cooler for dirt.
5. Check the starter rope for chafing.

CLICK HERE TO **DOWNLOAD** THE COMPLETE MANUAL

- Thank you very much for reading the preview of the manual.
- You can download the complete manual from: www.heydownloads.com by clicking the link below



- Please note: If there is no response to CLICKING the link, please download this PDF first and then click on it.

CLICK HERE TO **DOWNLOAD** THE COMPLETE MANUAL

6.3 Work mode

Operate the machine only with the steering rod folded down and adjusted to height ↪ *Chapter 6.1 'Folding down and adjusting the steering rod' on page 58.*

Guide the machine only by means of the steering rod.

Guide the machine so that your hands do not hit against solid objects.

Keep feet clear of the vibrating base plate.



CAUTION!

Danger of injury caused by uncontrolled machine movement!

- Always hold on to a running machine.
- Always keep an eye on a running machine.

Protective equipment: ■ Hearing protection
 ■ Working clothes
 ■ Safety shoes

1. Make sure that nobody is in the danger zone.
2. Set the throttle lever to position "MAX".

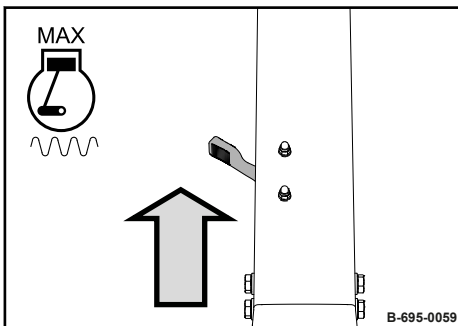


Fig. 51

3. Shift the handle forwards.
 - ⇒ The machine vibrates forward with a speed which corresponds to the travel lever position.

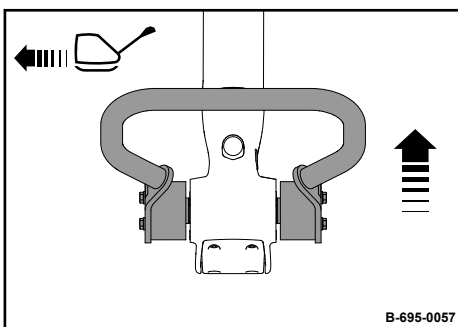


Fig. 52

8.2 Preparations/concluding work

Certain maintenance tasks require preparations and concluding activities.

This includes e.g. opening and closing maintenance flaps and maintenance doors as well as securing certain components.

After this work close all maintenance flaps and doors again and return all components to their operating condition.

8.2.1 Opening/closing the protection hood

8.2.1.1 Opening the protection hood

Protective equipment: ■ Working clothes
■ Protective gloves

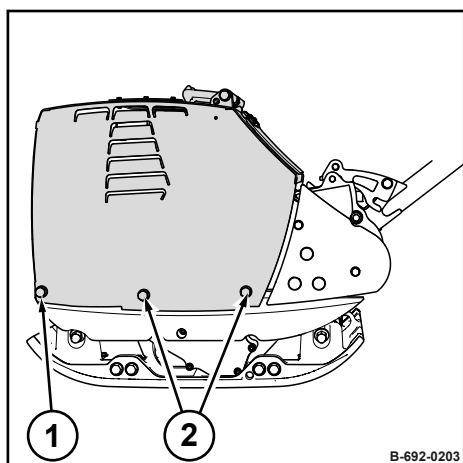


Fig. 64

1. Remove the rear screws (2) on both sides of the machine.
2. Put the screws (2) and the matching washers to the side.
3. Loosen the front screws (1) on both sides.
4. Fold the protection hood forward.

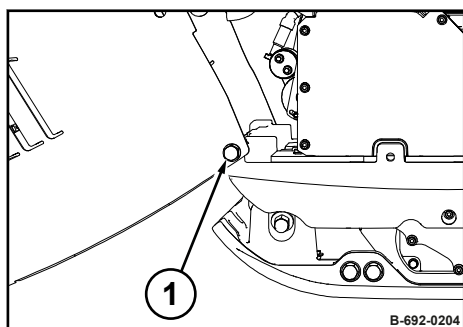


Fig. 65

5. Secure the protection hood against accidental closing.
For this tighten the screw (1) on both sides.

8.7.2 Checking and cleaning the water separator

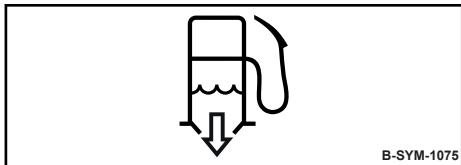


Fig. 73



The service intervals for the water separator depend on the water content in the fuel and can therefore not be determined precisely.

After taking the engine into operation you should check for signs of water and dirt initially every day.

Protective equipment: ■ Working clothes
 ■ Safety shoes
 ■ Protective gloves

1. Park the machine safely ↪ Chapter 6.4 'Parking the machine in secured condition' on page 63.
2. Place the transparent container under the drain plug.
3. Loosen the drain plug and drain the fluid until pure diesel fuel starts to run out.
4. Collect the escaping fluid.
5. Screw the drain plug back in tightly. Ensure leak tightness.
6. Dispose of collected fluid in line with environmental regulations.

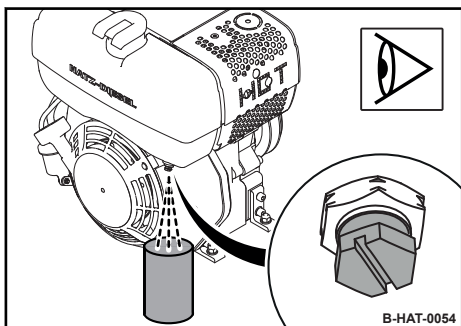


Fig. 74

8.9.4 Replacing the fuel filter



NOTICE!

Danger of engine damage!

- Ensure strict cleanliness! Thoroughly clean the area around the fuel tank beforehand.
- Never operate the engine after having removed the fuel filter.

Protective equipment: ■ Working clothes
■ Safety shoes
■ Protective gloves

1. Park the machine safely ↪ *Chapter 6.4 'Parking the machine in secured condition' on page 63.*

Replacing the fuel pre-filter

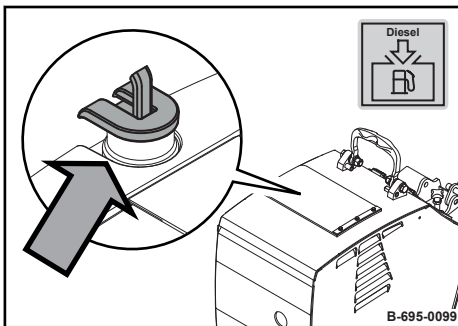


Fig. 98

2. Clean the area around the cap and then remove it.

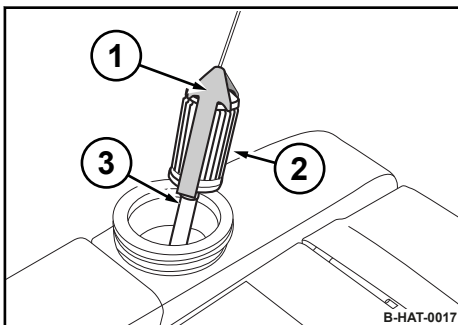


Fig. 99

3. Pull the fuel filter out of the tank using the string.

4. Pull the fuel line (3) off the fuel filter (2).

5. Take the fuel filter out of the bracket (1) and replace it with a new one.

6. Plug on the fuel line.

7. Insert the fuel filter into the tank.

8. Close the cap.

Maintenance – Every 2 years/every 500 operating hours

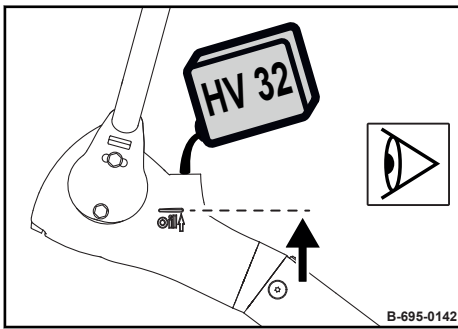


Fig. 125

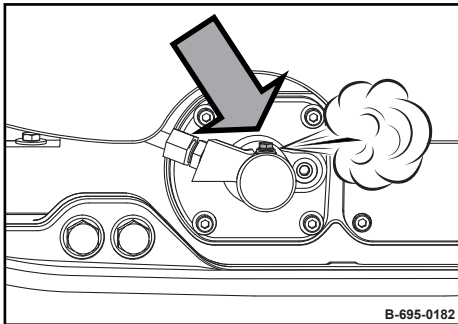


Fig. 126

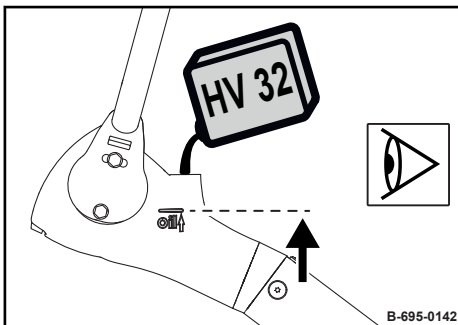


Fig. 127

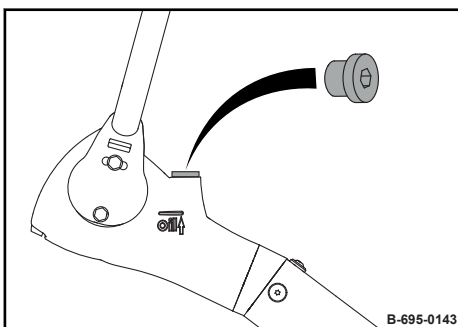


Fig. 128

7.



NOTICE!

Components may get damaged!

- Use only oil of the permitted specification
↳ Chapter 8.3.4 'Hydraulic oil' on page 74.

Fill in hydraulic oil up to the mark on the steering rod head.

Mark: approx. 40 mm (1.6 in) below the filler opening

8. Slacken the bleeding screw.

9. Wait until all air has escaped and then tighten the bleeding screw.

10. Fill in hydraulic oil up to the mark on the steering rod head.

11. Fasten the filler screw, tightening torque: 45 Nm (33.2 ft·lbf).

12. Dispose of oil in line with environmental regulations.

Troubleshooting – Starting the engine with the recoil starter

8. Manually guide the starter handle back to initial position.
9. If the engine does not start during the first attempt, repeat the starting process.



NOTICE!

Danger of engine damage!

- Warm up engine for a short while before starting work. Do not operate the engine immediately under full load.

CLICK HERE TO **DOWNLOAD** THE COMPLETE MANUAL

- Thank you very much for reading the preview of the manual.
- You can download the complete manual from: www.heydownloads.com by clicking the link below



- Please note: If there is no response to CLICKING the link, please download this PDF first and then click on it.

CLICK HERE TO **DOWNLOAD** THE COMPLETE MANUAL